

## HIV Surveillance Report — Alaska, 1982-2020

From January 1, 1982 through December 31, 2020, 2,026 cases of human immunodeficiency virus (HIV) infection were reported to the Alaska Section of Epidemiology (SOE), including cases with an initial diagnosis in Alaska and those previously diagnosed out-of-state who relocated to Alaska (Table). During 2020, 68 cases of HIV infection were reported to SOE; 30 (44%) cases were newly diagnosed in Alaska, yielding a 2020 statewide incidence rate of 4 cases per 100,000 persons. This HIV Surveillance Report contains summary data and highlights for cumulative cases reported from 1982 through 2020 (n=2,026), incident cases diagnosed in Alaska in 2020 (n=30), and persons living with HIV in Alaska as of December 31, 2020 (n=719). Additional information about HIV cases in Alaska can be found in the Epidemiologic Profile 1982–2015 (available at: <http://dhss.alaska.gov/dph/Epi/hivstd/Documents/HIVProfile1982-2015.pdf>).

**Table. Summary of Reported Cases of HIV by Select Characteristics — Alaska, 1982–2020**

	1982–2020				2020			
	All Reported Cases n=2,026		Reported Cases First Diagnosed in Alaska n=1,294		All Reported Cases n=68		Reported Cases First Diagnosed in Alaska n=30	
	Male	Female	Male	Female	Male	Female	Male	Female
HIV (non-AIDS)	584	159	343	114	42	5	22	5
HIV with AIDS	1,054	229	673	164	17	4	3	0
<b>TOTAL #</b>	<b>1,638</b>	<b>388</b>	<b>1,016</b>	<b>278</b>	<b>59</b>	<b>9</b>	<b>25</b>	<b>5</b>
<b>Age at Diagnosis in Years, #</b>								
<14	12	14	8	7	0	1	0	1
15–24	274	71	136	44	13	1	5	1
25–34	634	133	373	97	19	1	9	1
35–44	470	98	303	68	19	5	8	1
45–54	180	51	136	43	4	1	0	1
55–64	54	18	47	16	4	0	3	0
≥65	14	3	13	3	0	0	0	0
<b>Race/Ethnicity, #</b>								
American Indian/ Alaska Native (AI/AN)	273	126	232	121	13	2	11	2
Asian	30	19	14	12	1	0	1	0
Black	221	65	110	34	12	2	1	0
Hispanic	163	36	87	21	6	2	3	1
Native Hawaiian/ Pacific Islander (NH/PI)	11	3	10	2	1	1	1	1
White	901	130	548	84	25	2	8	1
Multi-race (Multi)	39	9	15	4	1	0	0	0
<b>Transmission Category, #</b>								
Male-to-Male Sex (MSM)	1,056	-	650	-	32	-	15	-
Injection Drug Use (IDU)	144	79	95	51	4	3	3	0
MSM and IDU	171	-	79	-	11	-	4	-
Heterosexual Contact	105	267	75	199	3	4	0	3
Perinatal	7	13	4	6	0	0	0	0
Other/Not Specified	155	29	113	22	9	2	3	2
<b>Residence at Time of Diagnosis, #</b>								
Anchorage/Mat-Su	713	170	713	170	16	1	16	1
Gulf Coast	58	16	58	16	1	2	1	2
Interior	103	35	103	35	3	2	2	1
Northern	18	9	18	9	0	0	0	0
Southeast	65	27	65	27	1	0	1	0
Southwest	56	20	56	20	5	1	5	1
Out of State/Country	622	110	-	-	33	3	-	-
Alaska Unspecified	3	1	3	1	0	0	0	0



## Cumulative Reported Cases of HIV, 1982–2020

**Highlights**  
**Cumulative HIV Cases**  
**1982–2020 (n=2,026)**

- 1,283 (63%) ever had a diagnosis of AIDS
- 704 (35%) are known to have died
- 1,638 (81%) were male
- 1,227 (61%) were men who have sex with men (MSM), including 171 (8%) MSM/IDU; 372 (18%) were heterosexual (Hetero) and 223 (11%) were IDU
- 1,031 (51%) were White; 399 (20%) were Alaska Native/American Indian; 286 (14%) were Black
- 1,294 (64%) had an initial diagnosis in Alaska, with 883 (68%) residing in Anchorage/Mat-Su at the time of diagnosis

Figure 1. Cumulative Reported Cases of HIV and Known Deaths by 5 Year increments, Alaska — 1982–2020

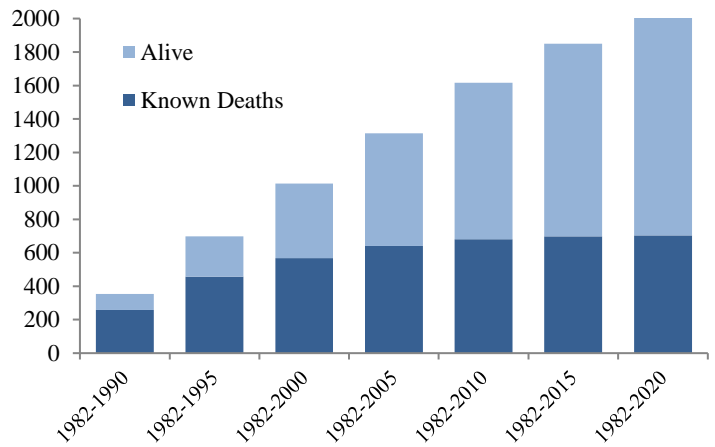


Figure 2. Cumulative Reported Cases of HIV by Age at Diagnosis and Gender at Birth, Alaska — 1982–2020

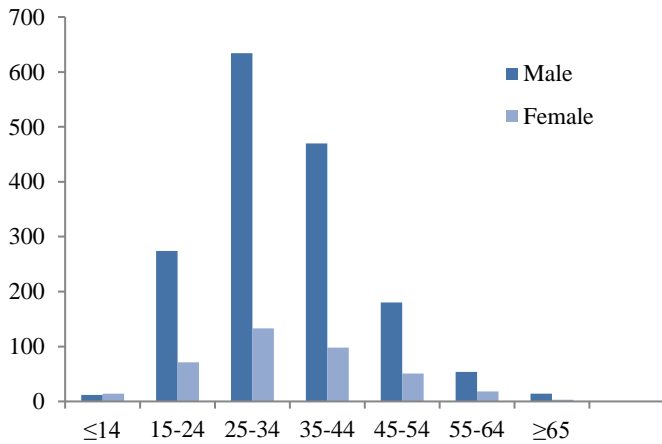


Figure 3. Cumulative Reported Cases of HIV by Race/Ethnicity and Gender at Birth, Alaska — 1982–2020

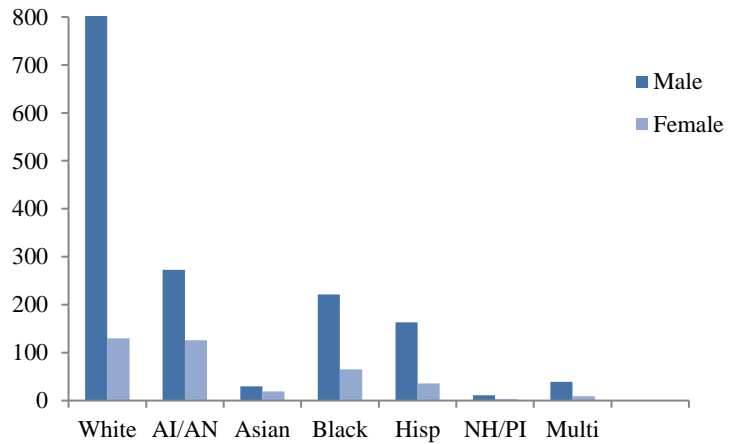


Figure 4. Cumulative Reported Cases of HIV by Transmission Category, Alaska — 1982–2020

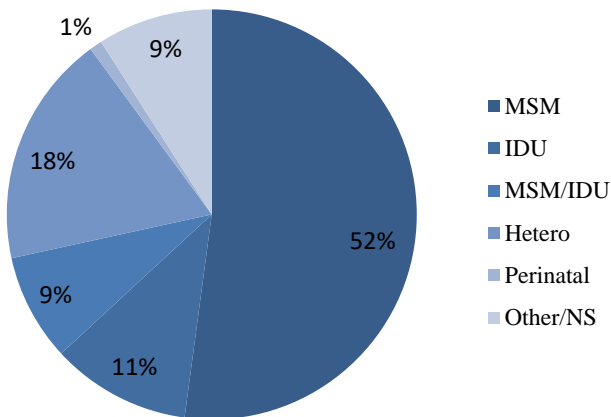
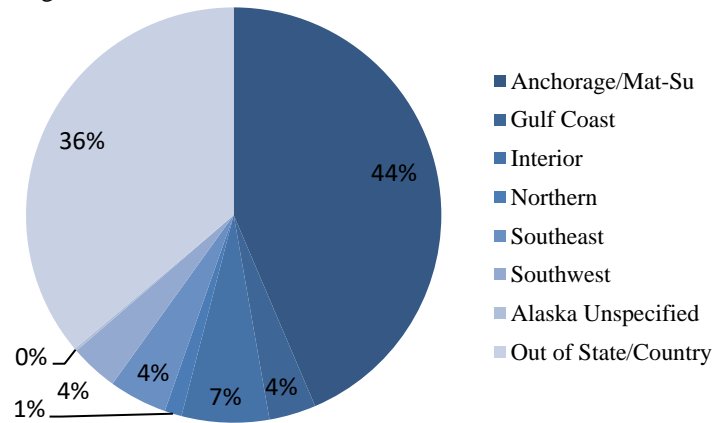


Figure 5. Cumulative Reported Cases of HIV by Residence at Diagnosis, Alaska — 1982–2020



## Reported Cases of HIV Newly Diagnosed in Alaska, 2020

**Highlights**  
**Newly Diagnosed HIV Cases**  
**2020 (n=30)**

- 3 (10%) were diagnosed with AIDS at the time of initial diagnosis
- 1 (3%) is known to have died
- 25 (83%) were male
- 15 (50%) were men who have sex with men (MSM); 4 (13%) were MSM/IDU; 3 (10%) were heterosexual; and 3 (10%) were IDU
- 13 (43%) were Alaska Native/American Indian; 9 (30%) were White; 4 (13%) were Hispanic
- 17 (57%) were 34 years old or younger at diagnosis
- 17 (57%) were residing in Anchorage/Mat-Su at the time of diagnosis; 6 (20%) were residing in the Southwest

Figure 6. Reported Cases of HIV Newly Diagnosed in Alaska by Year — 2011–2020

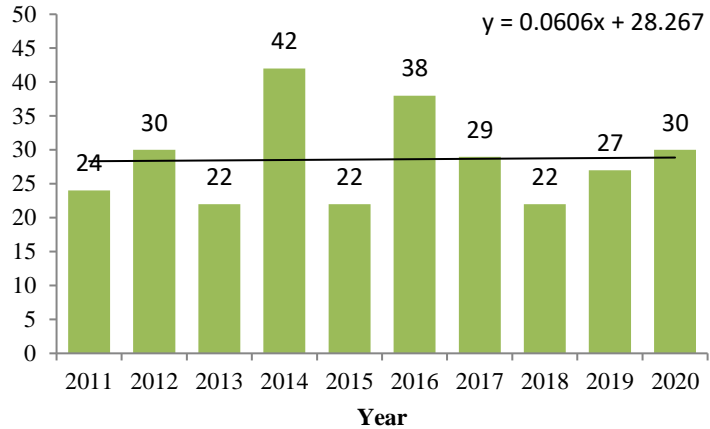


Figure 7. Reported Cases of HIV Newly Diagnosed in Alaska by Age at Diagnosis and Gender at Birth, 2020

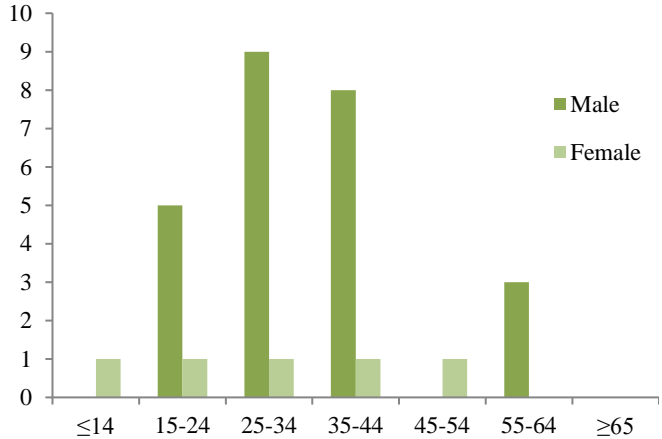


Figure 8. Reported Cases of HIV Newly Diagnosed in Alaska by Race/Ethnicity and Gender at Birth, 2020

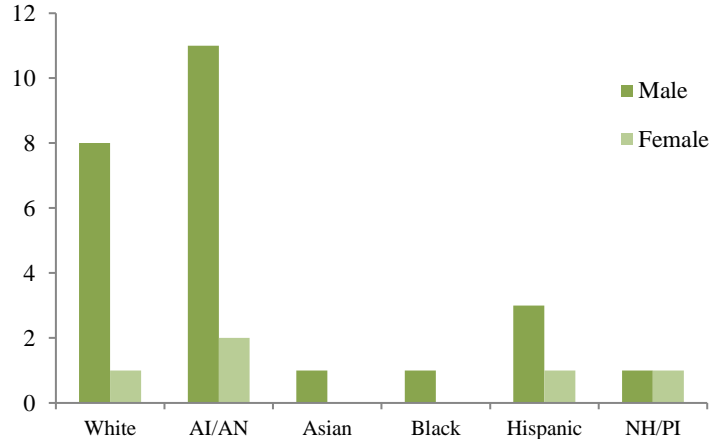


Figure 9. Reported Cases of HIV Newly Diagnosed in Alaska by Transmission Category, 2020

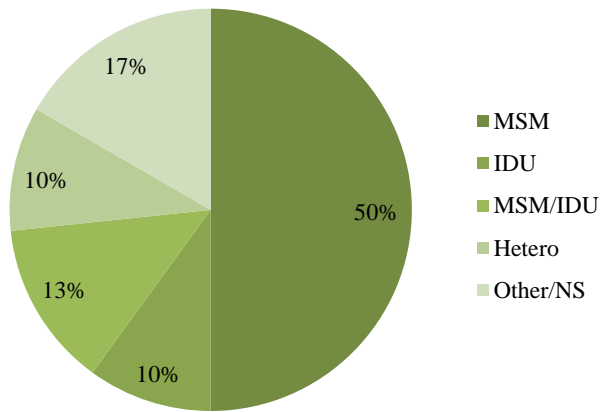
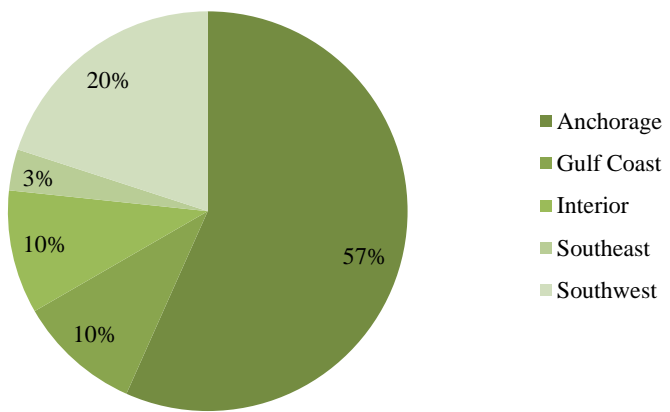


Figure 10. Reported Cases of HIV Newly Diagnosed in Alaska by Residence at Diagnosis, 2020



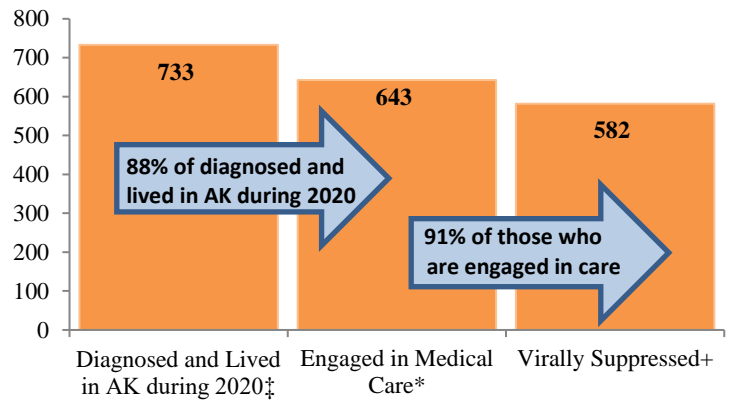
# Persons Living with HIV/AIDS in Alaska as of December 31, 2020

**Highlights**

**Persons Living with HIV in Alaska  
As of December 31, 2020 (n=719)**

- 363 (50%) ever had a diagnosis of AIDS
- 545 (76%) were male
- 406 (56%) were men who have sex with men (MSM), including 49 (7%) MSM/IDU; 180 (25%) were heterosexual
- 278 (39%) were White; 203 (28%) were Alaska Native/American Indian; 102 (14%) were Black
- 462 (64%) had an initial diagnosis in Alaska, with 301 (65%) residing in Anchorage/Mat-Su at the time of diagnosis
- Of the 733 persons living with HIV in Alaska during 2020, 643 (88%) were engaged in medical care, and of those, 582 (91%) were virally suppressed.

Figure 11. HIV Care Continuum (n=733) — Alaska, 2020



‡Includes all cases who lived in Alaska (AK) during 2020; cases with unknown residence and no activity in the surveillance system for 10 or more years were excluded (n=16)

\*Received at least one CD4 or Viral Load between Jan. 1 and Dec. 31, 2020

+Viral Load ≤200 copies/mL

Figure 12. Persons Living with HIV/AIDS in Alaska by Age at Diagnosis and Gender at Birth as of December 31, 2020

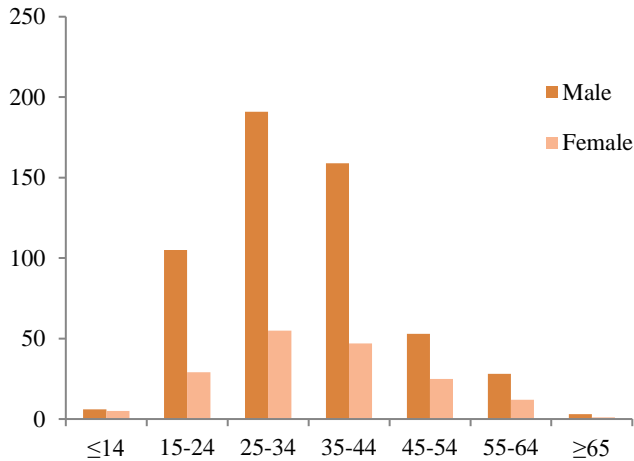


Figure 14. Persons Living with HIV/AIDS in Alaska by Transmission Category as of December 31, 2020

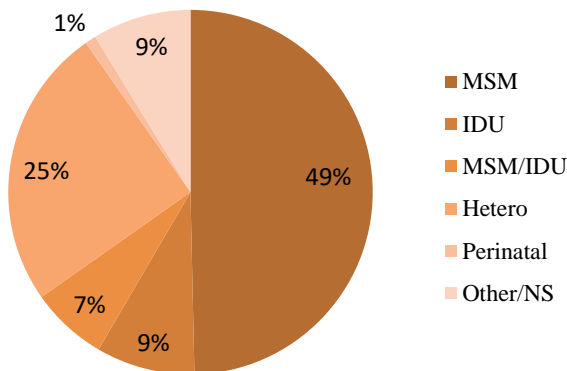


Figure 13. Persons Living with HIV/AIDS in Alaska by Race/Ethnicity and Gender at Birth as of December 31, 2020

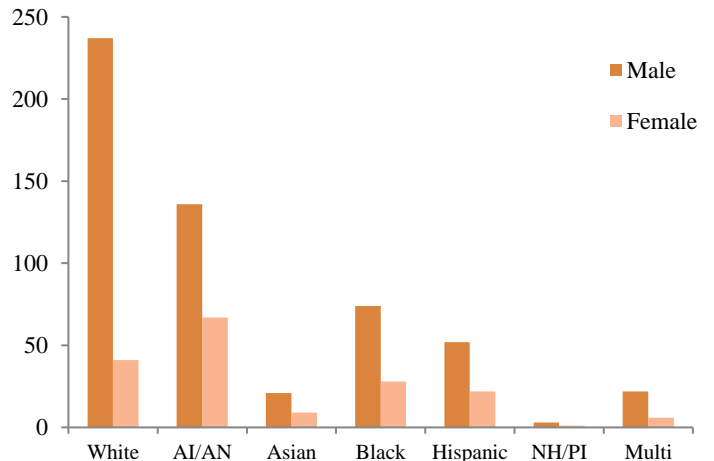


Figure 15. Persons Living with HIV/AIDS in Alaska by Residence at Time of Diagnosis as of December 31, 2020

