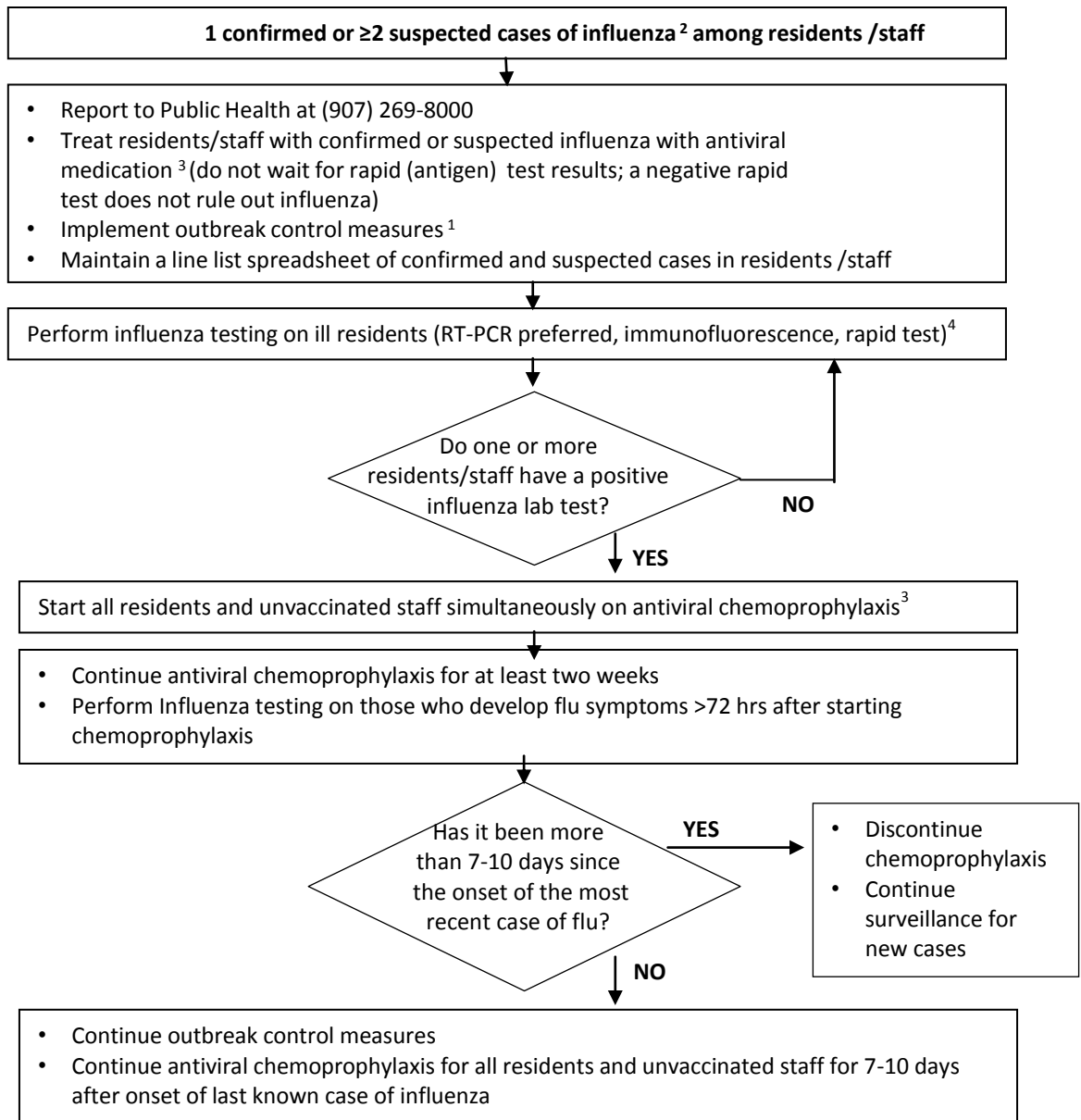


# Management of Influenza Outbreaks in Long Term Care Facilities

Please review CDC Guidance for Influenza Outbreak Management in Long-Term Care Facilities<sup>1</sup> before using this algorithm



## Notes

1. See: [www.cdc.gov/flu/professionals/infectioncontrol/ltc-facility-guidance.htm](http://www.cdc.gov/flu/professionals/infectioncontrol/ltc-facility-guidance.htm)
2. Patients with influenza virus infection often have fever or feverishness with cough, chills, headache, myalgias, sore throat, or runny nose and, at times, GI symptoms. The elderly may have atypical signs and symptoms without fever.
3. See CDC antiviral treatment guidelines: [www.cdc.gov/flu/professionals/antivirals/summary-clinicians.htm](http://www.cdc.gov/flu/professionals/antivirals/summary-clinicians.htm)
4. See CDC laboratory diagnosis guidance: [www.cdc.gov/flu/professionals/diagnosis/labprocedures.htm](http://www.cdc.gov/flu/professionals/diagnosis/labprocedures.htm)
5. In some cases Public Health may be able to facilitate influenza testing, 907-269-8000 for consultation

Chart adapted from Public Health Seattle & King County, WA [www.kingcounty.gov/health](http://www.kingcounty.gov/health).

Section of Epidemiology, 3601 C St.  
Suite 540, Anchorage, AK 99503  
(p) 907-269-8000, (f) 907-562-7802, (e) [outbreak@alaska.gov](mailto:outbreak@alaska.gov)

