

# BIRTHS



*"The Embrace"*  
Copyright Rie Munoz, Ltd.

## INTRODUCTION

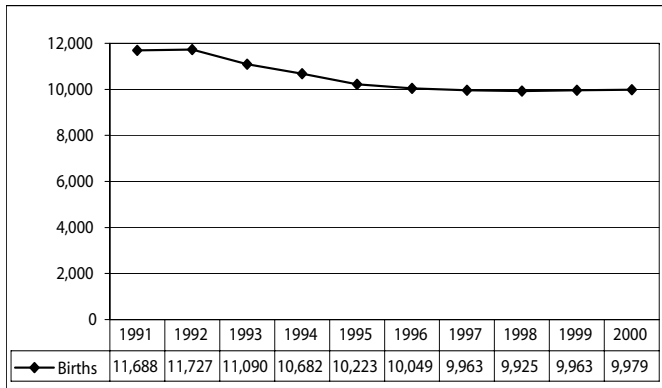
The Alaska birth certificate has information about each baby born in Alaska, regardless of the mother's residence state. Through a vital statistics cooperative agreement, birth information is also collected for Alaska mothers who have a baby in another state. Thus, the Bureau of Vital Statistics Information System contains records on all births occurring in the state and all births to residents of the state.

The birth certificate contains information about the mother, the father, the pregnancy, and the child. Birth information is collected in hospitals and birth centers

from worksheets completed by parents or medical staff, from medical charts, or by a combination of these sources. Midwives and family members who deliver a baby collect the birth information from their records or from a parent and complete the birth certificate.

This chapter reports information from the birth certificate such as pregnancy history, parent's education, prenatal care, mother's health risk behaviors, and birth weight which can be used to monitor and help improve the health of mothers and children.

FIGURE 1 ALASKA RESIDENT BIRTHS, 1991–2000



There were 9,979 live births to Alaska residents in 2000 (Figure 1). This is an increase of 0.2 percent from the 9,963 births recorded in 1999. Of these births, 5,161 were boys and 4,818 were girls. Of the 9,979 births in 2000, 144 were multiple births with 139 sets of twins and 5 sets of triplets.

The natural increase in Alaska’s population (the increase of births over deaths) was 7,057 persons, representing a natural increase rate of 11.3 persons per 1,000 population. This is a 3.4 percent decrease from the natural increase rate of 11.7 recorded in 1999.

The 2000 crude birth rate of 15.9 per 1,000 population represents a 0.6 percent decrease from the 1999 crude birth rate of 16.0, and a 22.4 percent decrease from the crude birth rate of 20.5 per 1,000 population recorded in 1991. The 2000 crude birth rate for the United States was 14.7 live births per 1,000 population<sup>1</sup>, which is a decline of 9.8 percent from the rate of 16.3 in 1991.

FIGURE 2 CRUDE BIRTH RATES, U.S. AND ALASKA 1991–2000

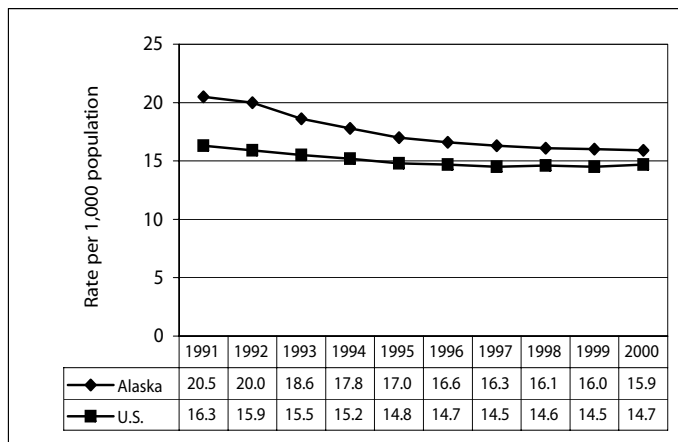
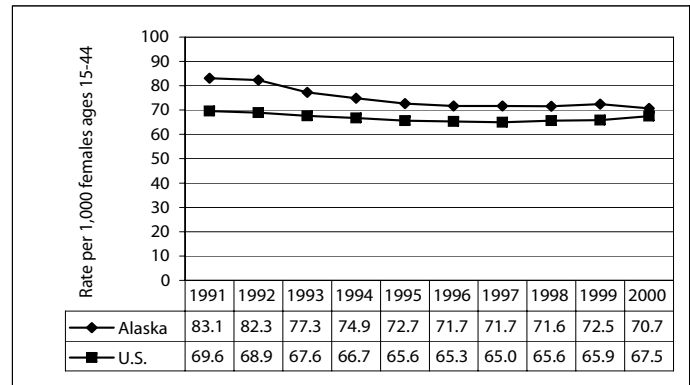


FIGURE 3 FERTILITY RATES, U.S. AND ALASKA 1991–2000

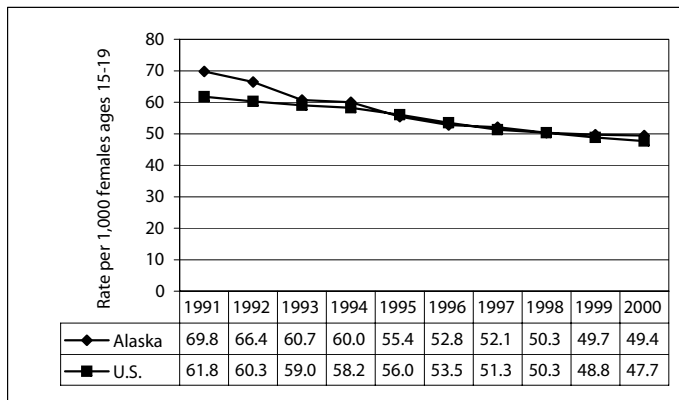


In order to calculate crude birth rates (Figure 2), fertility rates, or any of the other rates used in this report, population estimates must be used. Population estimates are provided by the Alaska Department of Labor, Research and Analysis Section, Demographics Unit. Due to the way race information was collected in the 2000 Federal census, population estimates by race are not comparable to previous estimates. The Alaska Department of Labor has developed bridge estimates so that Federal 2000 population estimates by race are comparable to previous estimates. When reporting rates by race, this report uses bridge estimates. Please refer to Appendix I for the population estimates used in this report.

The fertility rate (Figure 3) is a more meaningful measure of behavioral patterns than the crude birth rate since it is a measure of the number of births compared to the number of women of usual child-bearing age (15–44 years). The 2000 fertility rate for Alaska was 70.7 births per 1,000 women age 15–44, representing a 2.5 percent decrease from the 1999 fertility rate of 72.5. Alaska’s fertility rate was 4.7 percent higher than the U.S. fertility rate of 67.5 in 2000.

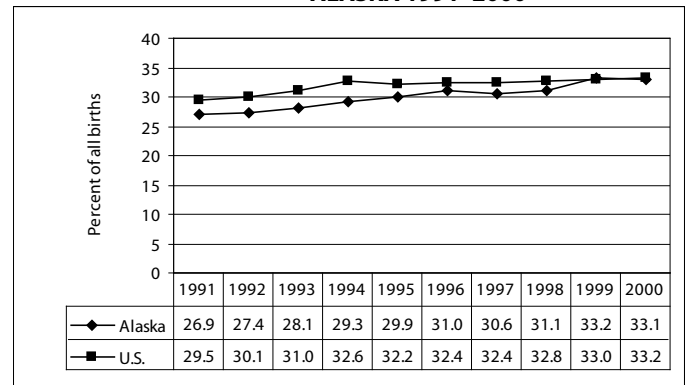
<sup>1</sup>National Center for Health Statistics, U.S. Department of Health and Human Services, “Births: Final Data for 2000,” National Vital Statistics Report, Vol. 50, No. 5, February 12, 2002.

**FIGURE 4 TEEN BIRTH RATES, U.S. AND ALASKA 1991–2000**



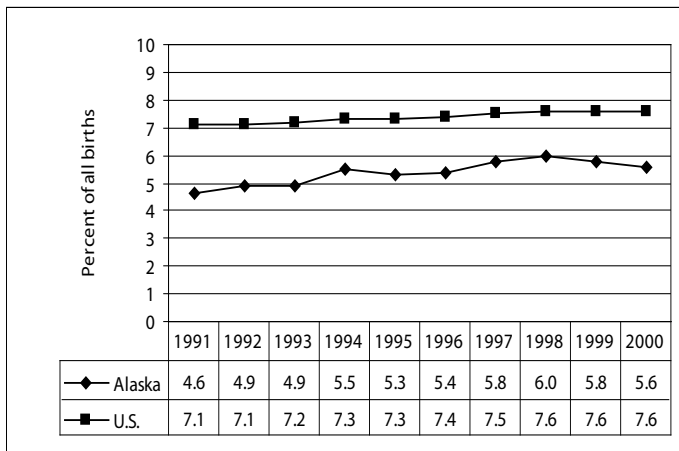
The 2000 teen (ages 15–19) birth rate for Alaska was 49.4, which is slightly higher than the 2000 U.S. teen birth rate of 47.7 (Figure 4). Alaska’s 2000 teen birth rate reflects a slight drop compared to the 1999 rate of 49.7. Since 1991, the teen birth rate in Alaska has declined by almost one-third (29.2 percent).

**FIGURE 6 PERCENTAGE OF UNWED MOTHERS, U.S. AND ALASKA 1991–2000**



Low birth weight [live births that weigh less than 2,500 grams (5 pounds, 8 ounces)] is an important predictor of infant death. Infants born with low birth weight also are more likely to need extensive medical treatment. The incidence of low birth weight (Figure 5) babies born in Alaska during 2000 was 5.6 percent of total live births, a decrease of 3.4 percent from the 5.8 percent in Alaska during 1999. The U.S. percentage of low birth weight births remained at 7.6 percent for the third year in a row.

**FIGURE 5 PERCENTAGE OF LOW BIRTH WEIGHT INFANTS, U.S. AND ALASKA 1991–2000**



Of the total births to Alaska residents during 2000, 33.1 percent were to unmarried women (Figure 6). This is nearly identical to the percent reported for Alaska in 1999. Although in 1991 the percentage of unwed births was lower in Alaska than the U.S. (26.9 percent vs. 29.5), by 2000 the percentage in Alaska was essentially the same as the U.S.

The most popular boy’s name in 2000 was Michael and the most popular girl’s name was Hannah. Figure 7 below shows the ten most popular boys’ and girls’ names for the years 1990, 1995, and 2000.

**FIGURE 7 MOST POPULAR BOYS’ AND GIRLS’ NAMES, ALASKA 1990, 1995, AND 2000**

RANK	BOYS' NAMES			GIRLS' NAMES		
	1990	1995	2000	1990	1995	2000
1	Michael	Michael	Michael	Jessica	Samantha	Hannah
2	Christopher	Jacob	Jacob	Ashley	Hannah	Madison
3	Joshua	Brandon	William	Amanda	Jessica	Emily
4	Matthew	Tyler	James	Brittany	Sarah	Sarah
5	David	Daniel	Joshua	Samantha	Ashley	Anna
6	Andrew	Austin	Andrew	Megan	Emily	Ashley
7	James	Matthew	Brandon	Sarah	Amanda	Elizabeth
8	Daniel	James	Joseph	Rachel	Kayla	Emma
9	Jacob	John	Matthew	Jennifer	Megan	Alyssa
10	Kyle	Joshua	Zachary	Elizabeth	Jordan	Jessica

## BIRTHS BY RESIDENCE AND RACE

The following tables of this chapter show annual occurrences of live births to Alaskan residents during 2000 and for the three-year period, 1998 through 2000.

Annual rates and three-year rates for the State as a whole, its 27 census areas, and 12 Native Regional Corporations are shown by race and residence of mother. Natality statistics on the mother's age, marital status, education, birth facility, prenatal care, cesarean delivery, pre-term births, and low birth weight are presented.

The table for the statewide totals (Table 1) provides birth statistics for the white, black, Native, and Asian/Pacific Islander races. However, due to the low number of reportable events for some census areas or boroughs, birth outcomes by census area (borough) and Native regional corporation are only shown for the two predominant races in Alaska: Native and white.

Also, unknown values are not reported in these tables. Thus, the percentages for certain categories such as mother's age group may not add up to the total number of births.

Since female population estimates are not available by race for individual census areas, fertility rates and teen birth rates cannot be calculated for these tables (Table 2 and Table 3). Furthermore, due to the way race information was collected in the Federal 2000 Census, population estimates by race that are comparable to previous population estimates do not exist. The Alaska Department of Labor has developed bridge estimates so that the Federal population estimates by race in 2000 will be comparable to previous years. Currently, bridge estimates are only available at the statewide level. When bridge estimates by census area become available, the online Annual Report will be updated. The following Web address is for the online Annual Report:

[www.hss.state.ak.us/dph/bvs/publications/default.htm](http://www.hss.state.ak.us/dph/bvs/publications/default.htm)

**TABLE 1** **SELECTED BIRTH STATISTICS REPORTED BY MOTHER'S RACE**  
**ALASKA: 2000 AND 1998-2000**

	TOTAL				WHITE				NATIVE			
	2000 NUMBER	2000 RATE*	1998-2000 NUMBER	1998-2000 RATE*	2000 NUMBER	2000 RATE*	1998-2000 NUMBER	1998-2000 RATE*	2000 NUMBER	2000 RATE*	1998-2000 NUMBER	1998-2000 RATE*
<b>BIRTH RATES (1)</b>												
CRUDE BIRTH RATE	9,979	15.9	29,867	16.0	6,299	13.8	19,377	14.1	2,455	22.1	7,292	22.8
TEEN BIRTH RATE												
15-17	381	24.3	1,162	25.7	143		500		173		504	
18-19	782	99.6	2,225	90.7	419		1,207		274		778	
15-19	1,163	49.4	3,387	48.5	562	35.0	1,707	35.4	447	87.2	1,282	85.4
FERTILITY RATE	9,979	70.7	29,867	71.6	6,299	61.9	19,377	63.7	2,455	98.7	7,292	102.8
	2000 NUMBER	2000 %	1998-2000 NUMBER	1998-2000 %	2000 NUMBER	2000 %	1998-2000 NUMBER	1998-2000 %	2000 NUMBER	2000 %	1998-2000 NUMBER	1998-2000 %
<b>BIRTHS</b>												
IN STATE	9,873	100.0	29,563	100.0	6,212	62.9	19,134	64.7	2,454	24.9	7,280	24.6
TO RESIDENTS	9,979	100.0	29,867	100.0	6,299	63.1	19,377	64.9	2,455	24.6	7,292	24.4
<b>FACILITY</b>												
HOSPITAL	9,406	94.3	28,120	94.2	5,803	92.1	17,878	92.3	2,416	98.4	7,148	98.0
BIRTHING CENTER	289	2.9	822	2.8	267	4.2	769	4.0	10	0.4	24	0.3
HOME	137	1.4	471	1.6	127	2.0	434	2.2	6	0.2	21	0.3
CLINIC	28	0.3	100	0.3	8	0.1	19	0.1	19	0.8	78	1.1
OUTSIDE ALASKA	119	1.2	354	1.2	94	1.5	277	1.4	4	0.2	21	0.3
<b>MOTHER CHARACTERISTICS</b>												
<b>AGE GROUP</b>												
<15	14	0.1	42	0.1	7	0.1	15	0.1	1	0.0	18	0.2
15-19	1,163	11.7	3,387	11.3	562	8.9	1,707	8.8	447	18.2	1,282	17.6
20-24	2,705	27.1	8,073	27.0	1,641	26.1	4,948	25.5	745	30.3	2,228	30.6
25-29	2,711	27.2	8,228	27.6	1,781	28.3	5,593	28.9	618	25.2	1,809	24.8
30-34	2,037	20.4	6,079	20.4	1,376	21.9	4,233	21.9	379	15.4	1,181	16.2
35-39	1,059	10.6	3,211	10.8	738	11.7	2,282	11.8	208	8.5	613	8.4
40-44	276	2.8	793	2.7	184	2.9	552	2.8	55	2.2	156	2.1
45+	10	0.1	45	0.2	7	0.1	39	0.2	2	0.1	5	0.1
REPORTED DRINKING	264	2.7	972	3.3	106	1.7	391	2.0	145	6.0	545	7.6
REPORTED SMOKING	1,834	18.6	5,425	18.3	895	14.3	2,701	14.0	830	34.1	2,482	34.3
UNWED	3,293	33.1	9,675	32.5	1,471	23.4	4,418	22.8	1,380	56.6	4,169	57.3
<b>EDUCATION</b>												
<12 YEARS	1,355	14.0	3,970	13.7	561	9.1	1,767	9.3	635	26.8	1,827	26.1
12 YEARS	4,190	43.3	12,533	43.1	2,411	39.0	7,271	38.2	1,305	55.0	3,954	56.5
12+ YEARS	4,131	42.7	12,564	43.2	3,217	52.0	10,015	52.6	433	18.2	1,221	17.4
<b>PRENATAL CARE</b>												
<b>TRIMESTER CARE BEGAN</b>												
1ST TRIMESTER	7,797	80.6	23,595	80.8	5,222	84.9	15,960	83.8	1,685	70.3	5,219	73.4
3RD TRIMESTER	411	4.2	1,217	4.2	157	2.6	593	3.1	202	8.4	491	6.9
NO PRENATAL CARE	41	0.4	139	0.5	15	0.3	68	0.4	19	0.8	52	0.7
<b>APNCU INDEX</b>												
ADEQUATE+	2,423	25.6	7,829	27.1	1,642	27.4	5,558	29.5	482	20.3	1,368	19.4
ADEQUATE	3,954	41.8	11,860	41.0	2,802	46.8	8,546	45.3	730	30.7	2,147	30.4
INTERMEDIATE	1,600	16.9	4,783	16.5	898	15.0	2,633	14.0	502	21.1	1,679	23.8
INADEQUATE	1,436	15.2	4,311	14.9	627	10.5	2,055	10.9	647	27.2	1,812	25.7
<b>KESSNER INDEX</b>												
ADEQUATE	6,566	69.4	20,015	69.1	4,600	76.8	14,338	76.0	1,220	51.2	3,584	50.7
INTERMEDIATE	2,448	25.9	7,580	26.2	1,216	20.3	3,875	20.5	942	39.5	2,941	41.6
INADEQUATE	411	4.3	1,217	4.2	157	2.6	593	3.1	202	8.5	491	6.9
<b>C-SECTION BIRTHS</b>	1,698	17.3	4,648	15.8	1,198	19.4	3,381	17.7	252	10.4	690	9.5
<b>PRE-TERM BIRTHS</b>	1,012	10.2	3,084	10.4	569	9.1	1,768	9.2	293	12.0	930	12.8
<b>LOW BIRTHWEIGHT</b>	559	5.6	1,720	5.8	305	4.8	1,006	5.2	141	5.8	431	5.9

Note: Unknown responses are excluded from the denominator when calculating percentages.

(1) Rate per 1,000 population.

\* Rates based on fewer than 10 occurrences are statistically unreliable and should be used with caution.

\*\* Data suppressed for confidentiality concerns if total births to residents, by race, is less than five observations.

**TABLE 1** **SELECTED BIRTH STATISTICS REPORTED BY MOTHER'S RACE**  
**ALASKA: 2000 AND 1998-2000**

	TOTAL				BLACK				ASIAN/PI			
	2000 NUMBER	2000 RATE*	1998-2000 NUMBER	1998-2000 RATE*	2000 NUMBER	2000 RATE*	1998-2000 NUMBER	1998-2000 RATE*	2000 NUMBER	2000 RATE*	1998-2000 NUMBER	1998-2000 RATE*
<b>BIRTH RATES (1)</b>												
CRUDE BIRTH RATE	9,979	15.9	29,867	16.0	462	18.1	1,286	16	633	18.1	1,570	16.4
TEEN BIRTH RATE												
15-17	381	24.3	1,162	25.7	37		79		21		62	
18-19	782	99.6	2,225	90.7	47		129		39		95	
15-19	1,163	49.4	3,387	48.5	84	83.6	208	66.3	60	44.1	157	46.6
FERTILITY RATE	9,979	70.7	29,867	71.6	462	77.4	1,286	67.3	633	74.3	1,570	68.3
	2000 NUMBER	2000 %	1998-2000 NUMBER	1998-2000 %	2000 NUMBER	2000 %	1998-2000 NUMBER	1998-2000 %	2000 NUMBER	2000 %	1998-2000 NUMBER	1998-2000 %
<b>BIRTHS</b>												
IN STATE	9,873	100.0	29,563	100.0	461	4.7	1,280	4.3	628	6.4	1,557	5.3
TO RESIDENTS	9,979	100.0	29,867	100.0	462	4.6	1,286	4.3	633	6.3	1,570	5.3
<b>FACILITY</b>												
HOSPITAL	9,406	94.3	28,120	94.2	453	98.1	1,262	98.1	619	97.8	1,527	97.3
BIRTHING CENTER	289	2.9	822	2.8	3	0.6	8	0.6	7	1.1	17	1.1
HOME	137	1.4	471	1.6	2	0.4	6	0.5	2	0.3	9	0.6
CLINIC	28	0.3	100	0.3	0	0.0	0	0.0	0	0.0	2	0.1
OUTSIDE ALASKA	119	1.2	354	1.2	4	0.9	10	0.8	5	0.8	15	1.0
<b>MOTHER CHARACTERISTICS</b>												
<b>AGE GROUP</b>												
<15	14	0.1	42	0.1	3	0.7	4	0.3	2	0.3	4	0.3
15-19	1,163	11.7	3,387	11.3	84	18.2	208	16.2	60	9.5	157	10.0
20-24	2,705	27.1	8,073	27.0	148	32.1	454	35.3	136	21.5	352	22.4
25-29	2,711	27.2	8,228	27.6	108	23.4	307	23.9	177	28.0	431	27.5
30-34	2,037	20.4	6,079	20.4	83	18.0	197	15.3	168	26.5	392	25.0
35-39	1,059	10.6	3,211	10.8	28	6.1	92	7.2	66	10.4	190	12.1
40-44	276	2.8	793	2.7	6	1.3	22	1.7	24	3.8	44	2.8
45+	10	0.1	45	0.2	1	0.2	1	0.1	0	0.0	0	0.0
REPORTED DRINKING	264	2.7	972	3.3	8	1.8	19	1.5	4	0.6	14	0.9
REPORTED SMOKING	1,834	18.6	5,425	18.3	43	9.3	107	8.3	46	7.3	87	5.6
UNWED	3,293	33.1	9,675	32.5	208	45.0	562	43.7	188	29.7	421	26.9
<b>EDUCATION</b>												
<12 YEARS	1,355	14.0	3,970	13.7	58	12.9	141	11.1	92	15.1	199	13.0
12 YEARS	4,190	43.3	12,533	43.1	200	44.6	563	44.5	252	41.3	644	42.1
12+ YEARS	4,131	42.7	12,564	43.2	190	42.4	562	44.4	266	43.6	687	44.9
<b>PRENATAL CARE</b>												
<b>TRIMESTER CARE BEGAN</b>												
1ST TRIMESTER	7,797	80.6	23,595	80.8	362	81.5	1,040	82.8	460	77.8	1,163	76.9
3RD TRIMESTER	411	4.2	1,217	4.2	11	2.5	41	3.3	35	5.9	76	5.0
NO PRENATAL CARE	41	0.4	139	0.5	3	0.7	7	0.6	4	0.7	11	0.7
<b>APNCU INDEX</b>												
ADEQUATE+	2,423	25.6	7,829	27.1	151	35.3	468	37.7	132	23.2	374	25.1
ADEQUATE	3,954	41.8	11,860	41.0	160	37.4	479	38.6	231	40.7	578	38.8
INTERMEDIATE	1,600	16.9	4,783	16.5	66	15.4	151	12.2	112	19.7	268	18.0
INADEQUATE	1,436	15.2	4,311	14.9	48	11.2	136	11.0	89	15.7	260	17.4
<b>KESSNER INDEX</b>												
ADEQUATE	6,566	69.4	20,015	69.1	312	72.9	939	75.7	381	66.5	977	65.3
INTERMEDIATE	2,448	25.9	7,580	26.2	102	23.8	254	20.5	153	26.7	432	28.9
INADEQUATE	411	4.3	1,217	4.2	11	2.6	41	3.3	35	6.1	76	5.1
<b>C-SECTION BIRTHS</b>	1,698	17.3	4,648	15.8	107	23.8	249	19.7	117	18.8	268	17.3
<b>PRE-TERM BIRTHS</b>	1,012	10.2	3,084	10.4	75	16.3	180	14.1	63	10.0	175	11.2
<b>LOW BIRTHWEIGHT</b>	559	5.6	1,720	5.8	53	11.5	138	10.8	49	7.8	119	7.6

Note: Unknown responses are excluded from the denominator when calculating percentages.

(1) Rate per 1,000 population.

\* Rates based on fewer than 10 occurrences are statistically unreliable and should be used with caution.

\*\* Data suppressed for confidentiality concerns if total births to residents, by race, is less than five observations.

**TABLE 2** **SELECTED BIRTH STATISTICS REPORTED BY MOTHER'S RACE:**  
**2000 AND 1998-2000**  
**ALEUTIANS EAST BOROUGH**

	TOTAL				WHITE				NATIVE			
	2000 NUMBER	2000 RATE*	1998-2000 NUMBER	1998-2000 RATE*	2000 NUMBER	2000 RATE*	1998-2000 NUMBER	1998-2000 RATE*	2000 NUMBER	2000 RATE*	1998-2000 NUMBER	1998-2000 RATE*
<b>BIRTH RATES (1)</b>												
CRUDE BIRTH RATE	26	9.6	62	8.9								
TEEN BIRTH RATE												
15-17	1	23.3 *	3	21.7 *								
18-19	2	111.1 *	3	35.3 *								
15-19	3	49.2 *	6	26.9 *								
FERTILITY RATE	26	55.2	62	46.3								

	TOTAL				WHITE				NATIVE			
	2000 NUMBER	2000 %	1998-2000 NUMBER	1998-2000 %	2000 NUMBER	2000 %	1998-2000 NUMBER	1998-2000 %	2000 NUMBER	2000 %	1998-2000 NUMBER	1998-2000 %
<b>BIRTHS</b>												
WITHIN AREA	0	0.0	0	0.0	0	0.0	0	0.0	0	0.0	0	0.0
TO RESIDENTS	26	100.0	62	100.0	6	23.1	13	21.0	19	73.1	47	75.8
<b>FACILITY</b>												
HOSPITAL	23	88.5	57	91.9	3	50.0	8	61.5	19	100.0	47	100.0
BIRTHING CENTER	0	0.0	0	0.0	0	0.0	0	0.0	0	0.0	0	0.0
HOME	0	0.0	0	0.0	0	0.0	0	0.0	0	0.0	0	0.0
OTHER	0	0.0	0	0.0	0	0.0	0	0.0	0	0.0	0	0.0
OUTSIDE ALASKA	3	11.5	5	8.1	3	50.0	5	38.5	0	0.0	0	0.0
<b>MOTHER CHARACTERISTICS</b>												
<b>AGE GROUP</b>												
<15	0	0.0	0	0.0	0	0.0	0	0.0	0	0.0	0	0.0
15-19	3	11.5	6	9.7	1	16.7	1	7.7	2	10.5	5	10.6
20-24	12	46.2	26	41.9	2	33.3	6	46.2	10	52.6	20	42.6
25-29	2	7.7	9	14.5	2	33.3	2	15.4	0	0.0	7	14.9
30-34	6	23.1	10	16.1	0	0.0	2	15.4	5	26.3	7	14.9
35-39	3	11.5	10	16.1	1	16.7	2	15.4	2	10.5	7	14.9
40-44	0	0.0	1	1.6	0	0.0	0	0.0	0	0.0	1	2.1
45+	0	0.0	0	0.0	0	0.0	0	0.0	0	0.0	0	0.0
REPORTED DRINKING	1	4.3	3	5.2	0	0.0	1	11.1	1	5.3	2	4.3
REPORTED SMOKING	11	44.0	24	39.3	0	0.0	0	0.0	11	57.9	24	51.1
UNWED	16	64.0	35	57.4	3	60.0	6	50.0	13	68.4	29	61.7
<b>EDUCATION</b>												
<12 YEARS	1	4.2	4	6.9	0	0.0	1	8.3	1	5.9	3	6.8
12 YEARS	15	62.5	37	63.8	2	33.3	5	41.7	12	70.6	31	70.5
12+ YEARS	8	33.3	17	29.3	4	66.7	6	50.0	4	23.5	10	22.7
<b>PRENATAL CARE</b>												
<b>TRIMESTER CARE BEGAN</b>												
1ST TRIMESTER	21	80.8	51	82.3	6	100.0	12	92.3	14	73.7	37	78.7
3RD TRIMESTER	1	3.8	1	1.6	0	0.0	0	0.0	1	5.3	1	2.1
NO PRENATAL CARE	0	0.0	0	0.0	0	0.0	0	0.0	0	0.0	0	0.0
<b>APNCU INDEX</b>												
ADEQUATE+	15	57.7	34	54.8	3	50.0	6	46.2	11	57.9	27	57.4
ADEQUATE	4	15.4	16	25.8	1	16.7	4	30.8	3	15.8	12	25.5
INTERMEDIATE	4	15.4	5	8.1	2	33.3	3	23.1	2	10.5	2	4.3
INADEQUATE	3	11.5	7	11.3	0	0.0	0	0.0	3	15.8	6	12.8
<b>KESSNER INDEX</b>												
ADEQUATE	20	76.9	48	77.4	5	83.3	10	76.9	14	73.7	37	78.7
INTERMEDIATE	5	19.2	13	21.0	1	16.7	3	23.1	4	21.1	9	19.1
INADEQUATE	1	3.8	1	1.6	0	0.0	0	0.0	1	5.3	1	2.1
<b>C-SECTION BIRTHS</b>	4	16.0	7	11.5	1	20.0	1	8.3	3	15.8	6	12.8
<b>PRE-TERM BIRTHS</b>	2	7.7	3	4.8	1	16.7	2	15.4	1	5.3	1	2.1
<b>LOW BIRTHWEIGHT</b>	0	0.0	1	1.6	0	0.0	0	0.0	0	0.0	1	2.1

Note: Unknown responses are excluded from the denominator when calculating percentages.  
 (1) Rate per 1,000 population.  
 \* Rates based on fewer than 10 occurrences are statistically unreliable and should be used with caution.  
 \*\* Data suppressed for confidentiality concerns if total births to residents, by race, is less than five observations.

**TABLE 2** **SELECTED BIRTH STATISTICS REPORTED BY MOTHER'S RACE:**  
**2000 AND 1998-2000**  
**ALEUTIANS WEST CENSUS AREA**

	TOTAL				WHITE				NATIVE			
	2000 NUMBER	2000 RATE*	1998-2000 NUMBER	1998-2000 RATE*	2000 NUMBER	2000 RATE*	1998-2000 NUMBER	1998-2000 RATE*	2000 NUMBER	2000 RATE*	1998-2000 NUMBER	1998-2000 RATE*
<b>BIRTH RATES (1)</b>												
CRUDE BIRTH RATE	38	7	115	7.1								
TEEN BIRTH RATE												
15-17	0	0.0	2	10.3 *								
18-19	1	30.3 *	6	28.0 *								
15-19	1	8.3 *	8	19.6 *								
FERTILITY RATE	38	36.2	115	36.2								
	2000 NUMBER	2000 %	1998-2000 NUMBER	1998-2000 %	2000 NUMBER	2000 %	1998-2000 NUMBER	1998-2000 %	2000 NUMBER	2000 %	1998-2000 NUMBER	1998-2000 %
<b>BIRTHS</b>												
WITHIN AREA	2	100.0	4	100.0	2	100.0	2	50.0	0	0.0	0	0.0
TO RESIDENTS	38	100.0	115	100.0	17	44.7	60	52.2	15	39.5	35	30.4
<b>FACILITY</b>												
HOSPITAL	24	63.2	66	57.4	7	41.2	20	33.3	15	100.0	35	100.0
BIRTHING CENTER	1	2.6	6	5.2	1	5.9	6	10.0	0	0.0	0	0.0
HOME	0	0.0	0	0.0	0	0.0	0	0.0	0	0.0	0	0.0
OTHER	0	0.0	2	1.7	0	0.0	0	0.0	0	0.0	0	0.0
OUTSIDE ALASKA	13	34.2	41	35.7	9	52.9	34	56.7	0	0.0	0	0.0
<b>MOTHER CHARACTERISTICS</b>												
<b>AGE GROUP</b>												
<15	0	0.0	1	0.9	0	0.0	0	0.0	0	0.0	1	2.9
15-19	1	2.7	8	7.1	1	6.3	3	5.2	0	0.0	3	8.6
20-24	8	21.6	19	16.8	2	12.5	8	13.8	6	40.0	10	28.6
25-29	9	24.3	23	20.4	5	31.3	13	22.4	4	26.7	8	22.9
30-34	10	27.0	32	28.3	4	25.0	15	25.9	2	13.3	7	20.0
35-39	8	21.6	27	23.9	4	25.0	18	31.0	3	20.0	6	17.1
40-44	1	2.7	3	2.7	0	0.0	1	1.7	0	0.0	0	0.0
45+	0	0.0	0	0.0	0	0.0	0	0.0	0	0.0	0	0.0
REPORTED DRINKING	0	0.0	0	0.0	0	0.0	0	0.0	0	0.0	0	0.0
REPORTED SMOKING	8	21.6	26	23.9	2	11.8	9	16.1	6	40.0	16	45.7
UNWED	11	29.7	31	27.9	5	29.4	10	17.5	4	26.7	16	45.7
<b>EDUCATION</b>												
<12 YEARS	5	13.2	12	12.0	0	0.0	2	4.3	4	26.7	7	20.0
12 YEARS	19	50.0	46	46.0	10	58.8	18	38.3	7	46.7	19	54.3
12+ YEARS	14	36.8	42	42.0	7	41.2	27	57.4	4	26.7	9	25.7
<b>PRENATAL CARE</b>												
<b>TRIMESTER CARE BEGAN</b>												
1ST TRIMESTER	30	85.7	88	80.7	13	76.5	44	74.6	13	92.9	30	88.2
3RD TRIMESTER	2	5.7	6	5.5	2	11.8	5	8.5	0	0.0	0	0.0
NO PRENATAL CARE	0	0.0	1	0.9	0	0.0	0	0.0	0	0.0	0	0.0
<b>APNCU INDEX</b>												
ADEQUATE+	19	54.3	43	40.2	6	35.3	14	25.0	11	78.6	23	67.6
ADEQUATE	8	22.9	30	28.0	5	29.4	18	32.1	1	7.1	7	20.6
INTERMEDIATE	2	5.7	17	15.9	1	5.9	12	21.4	1	7.1	3	8.8
INADEQUATE	6	17.1	16	15.0	5	29.4	12	21.4	1	7.1	1	2.9
<b>KESSNER INDEX</b>												
ADEQUATE	26	74.3	69	63.9	12	70.6	31	54.4	11	78.6	27	79.4
INTERMEDIATE	7	20.0	32	29.6	3	17.6	21	36.8	3	21.4	7	20.6
INADEQUATE	2	5.7	6	5.6	2	11.8	5	8.8	0	0.0	0	0.0
<b>C-SECTION BIRTHS</b>	10	26.3	22	19.5	5	29.4	11	19.0	3	20.0	7	20.0
<b>PRE-TERM BIRTHS</b>	2	5.3	5	4.5	1	5.9	1	1.7	1	6.7	1	2.9
<b>LOW BIRTHWEIGHT</b>	0	0.0	3	2.7	0	0.0	0	0.0	0	0.0	0	0.0

Note: Unknown responses are excluded from the denominator when calculating percentages.

(1) Rate per 1,000 population.

\* Rates based on fewer than 10 occurrences are statistically unreliable and should be used with caution.

\*\* Data suppressed for confidentiality concerns if total births to residents, by race, is less than five observations.



**TABLE 2** **SELECTED BIRTH STATISTICS REPORTED BY MOTHER'S RACE:**  
**2000 AND 1998-2000**  
**MUNICIPALITY OF ANCHORAGE**

	TOTAL				WHITE				NATIVE			
	2000 NUMBER	2000 RATE*	1998-2000 NUMBER	1998-2000 RATE*	2000 NUMBER	2000 RATE*	1998-2000 NUMBER	1998-2000 RATE*	2000 NUMBER	2000 RATE*	1998-2000 NUMBER	1998-2000 RATE*
<b>BIRTH RATES (1)</b>												
CRUDE BIRTH RATE	4,114	15.8	12,570	16.2								
TEEN BIRTH RATE												
15-17	149	24.4	474	27.6								
18-19	321	93.4	911	87.6								
15-19	470	49.3	1,385	50.3								
FERTILITY RATE	4,114	66.5	12,570	69.1								
	TOTAL				WHITE				NATIVE			
	2000 NUMBER	2000 %	1998-2000 NUMBER	1998-2000 %	2000 NUMBER	2000 %	1998-2000 NUMBER	1998-2000 %	2000 NUMBER	2000 %	1998-2000 NUMBER	1998-2000 %
<b>BIRTHS</b>												
WITHIN AREA	5,260	100.0	15,805	100.0	3,226	61.3	10,226	64.7	1,228	23.3	3,528	22.3
TO RESIDENTS	4,114	100.0	12,570	100.0	2,775	67.5	8,935	71.1	575	14.0	1,685	13.4
<b>FACILITY</b>												
HOSPITAL	3,963	96.3	12,094	96.2	2,637	95.0	8,500	95.1	572	99.5	1,674	99.3
BIRTHING CENTER	80	1.9	247	2.0	75	2.7	235	2.6	2	0.3	6	0.4
HOME	45	1.1	165	1.3	42	1.5	149	1.7	0	0.0	3	0.2
OTHER	3	0.1	3	0.0	3	0.1	3	0.0	0	0.0	0	0.0
OUTSIDE ALASKA	23	0.6	61	0.5	18	0.6	48	0.5	1	0.2	2	0.1
<b>MOTHER CHARACTERISTICS</b>												
<b>AGE GROUP</b>												
<15	7	0.2	16	0.1	2	0.1	7	0.1	0	0.0	1	0.1
15-19	470	11.4	1,385	11.0	246	8.9	792	8.9	114	19.8	320	19.0
20-24	1,067	26.0	3,263	26.0	688	24.8	2,176	24.4	179	31.1	546	32.4
25-29	1,128	27.4	3,517	28.0	778	28.1	2,597	29.1	152	26.4	415	24.6
30-34	886	21.6	2,687	21.4	645	23.3	2,038	22.8	80	13.9	250	14.8
35-39	438	10.7	1,352	10.8	337	12.2	1,065	11.9	36	6.3	112	6.6
40-44	113	2.7	325	2.6	76	2.7	237	2.7	14	2.4	41	2.4
45+	2	0.0	22	0.2	1	0.0	21	0.2	0	0.0	0	0.0
REPORTED DRINKING	89	2.2	380	3.0	49	1.8	204	2.3	32	5.6	154	9.2
REPORTED SMOKING	599	14.7	1,846	14.8	344	12.5	1,094	12.3	184	32.3	595	35.6
UNWED	1,308	31.8	3,880	30.9	655	23.6	2,132	23.9	342	60.1	988	58.9
<b>EDUCATION</b>												
<12 YEARS	518	12.9	1,561	12.7	228	8.3	788	8.9	172	30.8	507	31.7
12 YEARS	1,475	36.6	4,531	36.8	951	34.6	3,088	34.9	242	43.3	697	43.6
12+ YEARS	2,034	50.5	6,226	50.5	1,571	57.1	4,976	56.2	145	25.9	394	24.7
<b>PRENATAL CARE</b>												
<b>TRIMESTER CARE BEGAN</b>												
1ST TRIMESTER	3,434	86.4	10,651	86.5	2,429	89.4	7,800	88.4	450	79.8	1,340	81.1
3RD TRIMESTER	87	2.2	258	2.1	40	1.5	155	1.8	17	3.0	46	2.8
NO PRENATAL CARE	14	0.4	46	0.4	4	0.2	20	0.2	4	0.7	9	0.5
<b>APNCU INDEX</b>												
ADEQUATE+	1,133	29.9	4,021	33.2	802	31.1	3,017	34.8	125	22.3	372	22.7
ADEQUATE	1,800	47.5	5,645	46.6	1,285	49.9	4,216	48.7	256	45.7	701	42.8
INTERMEDIATE	510	13.4	1,410	11.7	321	12.5	869	10.0	92	16.4	321	19.6
INADEQUATE	336	8.9	980	8.1	165	6.4	537	6.2	83	14.8	234	14.3
<b>KESSNER INDEX</b>												
ADEQUATE	3,002	79.0	9,696	80.0	2,157	83.6	7,259	83.8	370	66.0	1,074	65.6
INTERMEDIATE	697	18.3	2,115	17.5	378	14.7	1,233	14.2	170	30.3	509	31.1
INADEQUATE	87	2.3	258	2.1	40	1.6	155	1.8	17	3.0	46	2.8
<b>C-SECTION BIRTHS</b>	750	18.6	2,085	16.8	525	19.4	1,542	17.5	58	10.1	171	10.2
<b>PRE-TERM BIRTHS</b>	429	10.5	1,344	10.7	262	9.5	871	9.8	61	10.6	214	12.7
<b>LOW BIRTHWEIGHT</b>	245	6.0	792	6.3	120	4.3	487	5.5	44	7.7	120	7.1

Note: Unknown responses are excluded from the denominator when calculating percentages.

(1) Rate per 1,000 population.

\* Rates based on fewer than 10 occurrences are statistically unreliable and should be used with caution.

\*\* Data suppressed for confidentiality concerns if total births to residents, by race, is less than five observations.

**TABLE 2** **SELECTED BIRTH STATISTICS REPORTED BY MOTHER'S RACE:**  
**2000 AND 1998-2000**  
**BETHEL CENSUS AREA**

	TOTAL				WHITE				NATIVE			
	2000 NUMBER	2000 RATE*	1998-2000 NUMBER	1998-2000 RATE*	2000 NUMBER	2000 RATE*	1998-2000 NUMBER	1998-2000 RATE*	2000 NUMBER	2000 RATE*	1998-2000 NUMBER	1998-2000 RATE*
<b>BIRTH RATES (1)</b>												
CRUDE BIRTH RATE	420	26.2	1,264	26.3								
TEEN BIRTH RATE												
15-17	21	45.7	61	45.4								
18-19	29	149.5	96	133.0								
15-19	50	76.5	157	76.0								
FERTILITY RATE	420	125.7	1,264	128.0								
	2000 NUMBER	2000 %	1998-2000 NUMBER	1998-2000 %	2000 NUMBER	2000 %	1998-2000 NUMBER	1998-2000 %	2000 NUMBER	2000 %	1998-2000 NUMBER	1998-2000 %
<b>BIRTHS</b>												
WITHIN AREA	378	100.0	1,186	100.0	4	1.1	26	2.2	371	98.1	1,155	97.4
TO RESIDENTS	420	100.0	1,264	100.0	22	5.2	74	5.9	395	94.0	1,182	93.5
<b>FACILITY</b>												
HOSPITAL	412	98.1	1,229	97.2	20	90.9	66	89.2	389	98.5	1,155	97.7
BIRTHING CENTER	0	0.0	2	0.2	0	0.0	2	2.7	0	0.0	0	0.0
HOME	0	0.0	5	0.4	0	0.0	1	1.4	0	0.0	4	0.3
OTHER	5	1.2	21	1.7	0	0.0	0	0.0	5	1.3	21	1.8
OUTSIDE ALASKA	3	0.7	7	0.6	2	9.1	5	6.8	1	0.3	2	0.2
<b>MOTHER CHARACTERISTICS</b>												
<b>AGE GROUP</b>												
<15	0	0.0	0	0.0	0	0.0	0	0.0	0	0.0	0	0.0
15-19	50	11.9	157	12.4	0	0.0	3	4.1	50	12.7	154	13.0
20-24	114	27.1	367	29.0	2	9.1	8	10.8	112	28.4	359	30.4
25-29	132	31.4	339	26.8	9	40.9	22	29.7	123	31.1	314	26.6
30-34	77	18.3	251	19.9	9	40.9	30	40.5	65	16.5	216	18.3
35-39	36	8.6	121	9.6	1	4.5	9	12.2	35	8.9	112	9.5
40-44	10	2.4	26	2.1	1	4.5	2	2.7	9	2.3	24	2.0
45+	1	0.2	3	0.2	0	0.0	0	0.0	1	0.3	3	0.3
REPORTED DRINKING	24	5.8	57	4.6	0	0.0	1	1.4	24	6.2	56	4.8
REPORTED SMOKING	96	23.0	234	18.6	2	9.1	7	9.5	94	24.0	227	19.3
UNWED	178	42.8	555	44.0	3	13.6	13	17.6	175	44.8	541	45.9
<b>EDUCATION</b>												
<12 YEARS	93	22.8	246	20.0	0	0.0	3	4.2	93	24.3	242	21.1
12 YEARS	252	61.8	806	65.7	4	18.2	15	21.1	247	64.5	787	68.6
12+ YEARS	63	15.4	175	14.3	18	81.8	53	74.6	43	11.2	119	10.4
<b>PRENATAL CARE</b>												
<b>TRIMESTER CARE BEGAN</b>												
1ST TRIMESTER	261	62.7	869	70.2	18	81.8	60	81.1	241	61.6	803	69.5
3RD TRIMESTER	58	13.9	126	10.2	1	4.5	6	8.1	57	14.6	120	10.4
NO PRENATAL CARE	1	0.2	5	0.4	0	0.0	0	0.0	1	0.3	5	0.4
<b>APNCU INDEX</b>												
ADEQUATE+	61	14.8	171	14.0	4	19.0	21	28.8	57	14.7	149	13.0
ADEQUATE	98	23.8	280	22.9	9	42.9	25	34.2	88	22.7	253	22.2
INTERMEDIATE	86	20.9	330	27.0	4	19.0	15	20.5	80	20.7	310	27.1
INADEQUATE	165	40.1	437	35.7	4	19.0	12	16.4	161	41.6	425	37.2
<b>KESSNER INDEX</b>												
ADEQUATE	152	37.0	485	39.6	15	71.4	52	71.2	135	34.9	428	37.4
INTERMEDIATE	200	48.7	608	49.7	5	23.8	15	20.5	194	50.1	590	51.6
INADEQUATE	58	14.1	126	10.3	1	4.8	6	8.2	57	14.7	120	10.5
<b>C-SECTION BIRTHS</b>	30	7.3	91	7.3	4	19.0	9	12.9	26	6.7	81	6.9
<b>PRE-TERM BIRTHS</b>	48	11.4	155	12.3	0	0.0	5	6.8	48	12.2	150	12.7
<b>LOW BIRTHWEIGHT</b>	21	5.0	63	5.0	0	0.0	1	1.4	21	5.3	62	5.3

Note: Unknown responses are excluded from the denominator when calculating percentages.

(1) Rate per 1,000 population.

\* Rates based on fewer than 10 occurrences are statistically unreliable and should be used with caution.

\*\* Data suppressed for confidentiality concerns if total births to residents, by race, is less than five observations.

**TABLE 2** **SELECTED BIRTH STATISTICS REPORTED BY MOTHER'S RACE:**  
**2000 AND 1998-2000**  
**BRISTOL BAY BOROUGH**

	TOTAL				WHITE				NATIVE			
	2000 NUMBER	2000 RATE*	1998-2000 NUMBER	1998-2000 RATE*	2000 NUMBER	2000 RATE*	1998-2000 NUMBER	1998-2000 RATE*	2000 NUMBER	2000 RATE*	1998-2000 NUMBER	1998-2000 RATE*
<b>BIRTH RATES (1)</b>												
CRUDE BIRTH RATE	16	12.7	53	13.9								
TEEN BIRTH RATE												
15-17	1	30.3 *	4	38.5 *								
18-19	0	0.0	1	25.0 *								
15-19	1	19.2 *	5	34.7 *								
FERTILITY RATE	16	60.2	53	66.2								
	TOTAL				WHITE				NATIVE			
	2000 NUMBER	2000 %	1998-2000 NUMBER	1998-2000 %	2000 NUMBER	2000 %	1998-2000 NUMBER	1998-2000 %	2000 NUMBER	2000 %	1998-2000 NUMBER	1998-2000 %
<b>BIRTHS</b>												
WITHIN AREA	1	100.0	1	100.0	1	100.0	1	100.0	0	0.0	0	0.0
TO RESIDENTS	16	100.0	53	100.0	10	62.5	38	71.7	6	37.5	15	28.3
<b>FACILITY</b>												
HOSPITAL	15	93.8	49	92.5	9	90.0	34	89.5	6	100.0	15	100.0
BIRTHING CENTER	0	0.0	1	1.9	0	0.0	1	2.6	0	0.0	0	0.0
HOME	0	0.0	0	0.0	0	0.0	0	0.0	0	0.0	0	0.0
OTHER	1	6.3	1	1.9	1	10.0	1	2.6	0	0.0	0	0.0
OUTSIDE ALASKA	0	0.0	2	3.8	0	0.0	2	5.3	0	0.0	0	0.0
<b>MOTHER CHARACTERISTICS</b>												
<b>AGE GROUP</b>												
<15	0	0.0	0	0.0	0	0.0	0	0.0	0	0.0	0	0.0
15-19	1	6.3	5	9.4	0	0.0	3	7.9	1	16.7	2	13.3
20-24	2	12.5	5	9.4	1	10.0	2	5.3	1	16.7	3	20.0
25-29	8	50.0	21	39.6	6	60.0	15	39.5	2	33.3	6	40.0
30-34	3	18.8	12	22.6	2	20.0	10	26.3	1	16.7	2	13.3
35-39	1	6.3	8	15.1	1	10.0	7	18.4	0	0.0	1	6.7
40-44	1	6.3	2	3.8	0	0.0	1	2.6	1	16.7	1	6.7
45+	0	0.0	0	0.0	0	0.0	0	0.0	0	0.0	0	0.0
REPORTED DRINKING	0	0.0	1	2.0	0	0.0	0	0.0	0	0.0	1	6.7
REPORTED SMOKING	3	18.8	11	21.2	0	0.0	4	10.8	3	50.0	7	46.7
UNWED	6	37.5	20	37.7	2	20.0	10	26.3	4	66.7	10	66.7
<b>EDUCATION</b>												
<12 YEARS	1	6.3	4	8.0	0	0.0	1	2.8	1	16.7	3	21.4
12 YEARS	8	50.0	25	50.0	6	60.0	18	50.0	2	33.3	7	50.0
12+ YEARS	7	43.8	21	42.0	4	40.0	17	47.2	3	50.0	4	28.6
<b>PRENATAL CARE</b>												
<b>TRIMESTER CARE BEGAN</b>												
1ST TRIMESTER	14	87.5	45	86.5	9	90.0	32	86.5	5	83.3	13	86.7
3RD TRIMESTER	0	0.0	2	3.8	0	0.0	1	2.7	0	0.0	1	6.7
NO PRENATAL CARE	0	0.0	0	0.0	0	0.0	0	0.0	0	0.0	0	0.0
<b>APNCU INDEX</b>												
ADEQUATE+	1	6.3	13	25.0	1	10.0	9	24.3	0	0.0	4	26.7
ADEQUATE	7	43.8	20	38.5	4	40.0	14	37.8	3	50.0	6	40.0
INTERMEDIATE	4	25.0	10	19.2	2	20.0	7	18.9	2	33.3	3	20.0
INADEQUATE	4	25.0	9	17.3	3	30.0	7	18.9	1	16.7	2	13.3
<b>KESSNER INDEX</b>												
ADEQUATE	10	62.5	36	69.2	7	70.0	26	70.3	3	50.0	10	66.7
INTERMEDIATE	6	37.5	14	26.9	3	30.0	10	27.0	3	50.0	4	26.7
INADEQUATE	0	0.0	2	3.8	0	0.0	1	2.7	0	0.0	1	6.7
<b>C-SECTION BIRTHS</b>	3	18.8	4	7.5	2	20.0	3	7.9	1	16.7	1	6.7
<b>PRE-TERM BIRTHS</b>	1	6.3	4	7.7	1	10.0	2	5.4	0	0.0	2	13.3
<b>LOW BIRTHWEIGHT</b>	0	0.0	1	1.9	0	0.0	0	0.0	0	0.0	1	6.7

Note: Unknown responses are excluded from the denominator when calculating percentages.

(1) Rate per 1,000 population.

\* Rates based on fewer than 10 occurrences are statistically unreliable and should be used with caution.

\*\* Data suppressed for confidentiality concerns if total births to residents, by race, is less than five observations.

**TABLE 2 SELECTED BIRTH STATISTICS REPORTED BY MOTHER'S RACE:  
2000 AND 1998-2000**

**DENALI BOROUGH**

	TOTAL				WHITE				NATIVE			
	2000 NUMBER	2000 RATE*	1998-2000 NUMBER	1998-2000 RATE*	2000 NUMBER	2000 RATE*	1998-2000 NUMBER	1998-2000 RATE*	2000 NUMBER	2000 RATE*	1998-2000 NUMBER	1998-2000 RATE*
<b>BIRTH RATES (1)</b>												
CRUDE BIRTH RATE	22	11.6	57	10.1								
<b>TEEN BIRTH RATE</b>												
15-17	0	0.0	1	5.5 *								
18-19	0	0.0	1	24.4 *								
15-19	0	0.0	2	9.0 *								
FERTILITY RATE	22	56.4	57	47.5								

	TOTAL				WHITE				NATIVE			
	2000 NUMBER	2000 %	1998-2000 NUMBER	1998-2000 %	2000 NUMBER	2000 %	1998-2000 NUMBER	1998-2000 %	2000 NUMBER	2000 %	1998-2000 NUMBER	1998-2000 %
<b>BIRTHS</b>												
WITHIN AREA	1	100.0	1	100.0	1	100.0	1	100.0	0	0.0	0	0.0
TO RESIDENTS	22	100.0	57	100.0	19	86.4	51	89.5	1	4.5	2	3.5
<b>FACILITY</b>												
HOSPITAL	18	81.8	47	82.5	15	78.9	41	80.4	1	100.0	2	100.0
BIRTHING CENTER	2	9.1	8	14.0	2	10.5	8	15.7	0	0.0	0	0.0
HOME	1	4.5	1	1.8	1	5.3	1	2.0	0	0.0	0	0.0
OTHER	0	0.0	0	0.0	0	0.0	0	0.0	0	0.0	0	0.0
OUTSIDE ALASKA	1	4.5	1	1.8	1	5.3	1	2.0	0	0.0	0	0.0
<b>MOTHER CHARACTERISTICS</b>												
<b>AGE GROUP</b>												
<15	0	0.0	0	0.0	**	**	**	**	**	**	**	**
15-19	0	0.0	2	3.5	**	**	**	**	**	**	**	**
20-24	2	9.1	9	15.8	**	**	**	**	**	**	**	**
25-29	8	36.4	16	28.1	**	**	**	**	**	**	**	**
30-34	6	27.3	15	26.3	**	**	**	**	**	**	**	**
35-39	3	13.6	11	19.3	**	**	**	**	**	**	**	**
40-44	3	13.6	4	7.0	**	**	**	**	**	**	**	**
45+	0	0.0	0	0.0	**	**	**	**	**	**	**	**
REPORTED DRINKING	0	0.0	1	1.8	**	**	**	**	**	**	**	**
REPORTED SMOKING	2	9.1	3	5.3	**	**	**	**	**	**	**	**
UNWED	6	27.3	12	21.1	**	**	**	**	**	**	**	**
<b>EDUCATION</b>												
<12 YEARS	1	4.8	6	10.7	**	**	**	**	**	**	**	**
12 YEARS	7	33.3	18	32.1	**	**	**	**	**	**	**	**
12+ YEARS	13	61.9	32	57.1	**	**	**	**	**	**	**	**
<b>PRENATAL CARE</b>												
<b>TRIMESTER CARE BEGAN</b>												
1ST TRIMESTER	17	81.0	44	81.5	**	**	**	**	**	**	**	**
3RD TRIMESTER	1	4.8	2	3.7	**	**	**	**	**	**	**	**
NO PRENATAL CARE	0	0.0	0	0.0	**	**	**	**	**	**	**	**
<b>APNCU INDEX</b>												
ADEQUATE+	1	4.8	3	5.6	**	**	**	**	**	**	**	**
ADEQUATE	5	23.8	20	37.0	**	**	**	**	**	**	**	**
INTERMEDIATE	11	52.4	21	38.9	**	**	**	**	**	**	**	**
INADEQUATE	4	19.0	10	18.5	**	**	**	**	**	**	**	**
<b>KESSNER INDEX</b>												
ADEQUATE	8	38.1	27	50.0	**	**	**	**	**	**	**	**
INTERMEDIATE	12	57.1	25	46.3	**	**	**	**	**	**	**	**
INADEQUATE	1	4.8	2	3.7	**	**	**	**	**	**	**	**
<b>C-SECTION BIRTHS</b>	8	36.4	14	25.0	**	**	**	**	**	**	**	**
<b>PRE-TERM BIRTHS</b>	2	9.5	6	10.7	**	**	**	**	**	**	**	**
<b>LOW BIRTHWEIGHT</b>	0	0.0	2	3.5	**	**	**	**	**	**	**	**

Note: Unknown responses are excluded from the denominator when calculating percentages.

(1) Rate per 1,000 population.

\* Rates based on fewer than 10 occurrences are statistically unreliable and should be used with caution.

\*\* Data suppressed for confidentiality concerns if total births to residents, by race, is less than five observations.

**TABLE 2 SELECTED BIRTH STATISTICS REPORTED BY MOTHER'S RACE:  
2000 AND 1998-2000**

**DILLINGHAM CENSUS AREA**

	TOTAL				WHITE				NATIVE			
	2000 NUMBER	2000 RATE*	1998-2000 NUMBER	1998-2000 RATE*	2000 NUMBER	2000 RATE*	1998-2000 NUMBER	1998-2000 RATE*	2000 NUMBER	2000 RATE*	1998-2000 NUMBER	1998-2000 RATE*
<b>BIRTH RATES (1)</b>												
CRUDE BIRTH RATE	91	18.5	292	20.4								
TEEN BIRTH RATE												
15-17	10	73.5	21	59.2								
18-19	9	272.7 *	24	135.6								
15-19	19	112.4	45	84.6								
FERTILITY RATE	91	93.0	292	101.0								
	TOTAL				WHITE				NATIVE			
	2000 NUMBER	2000 %	1998-2000 NUMBER	1998-2000 %	2000 NUMBER	2000 %	1998-2000 NUMBER	1998-2000 %	2000 NUMBER	2000 %	1998-2000 NUMBER	1998-2000 %
<b>BIRTHS</b>												
WITHIN AREA	57	100.0	191	100.0	2	3.5	10	5.2	55	96.5	179	93.7
TO RESIDENTS	91	100.0	292	100.0	8	8.8	36	12.3	82	90.1	252	86.3
<b>FACILITY</b>												
HOSPITAL	86	94.5	282	96.6	6	75.0	32	88.9	79	96.3	246	97.6
BIRTHING CENTER	0	0.0	0	0.0	0	0.0	0	0.0	0	0.0	0	0.0
HOME	0	0.0	1	0.3	0	0.0	1	2.8	0	0.0	0	0.0
OTHER	2	2.2	4	1.4	0	0.0	0	0.0	2	2.4	4	1.6
OUTSIDE ALASKA	3	3.3	5	1.7	2	25.0	3	8.3	1	1.2	2	0.8
<b>MOTHER CHARACTERISTICS</b>												
AGE GROUP												
<15	0	0.0	0	0.0	0	0.0	0	0.0	0	0.0	0	0.0
15-19	19	20.9	45	15.4	0	0.0	2	5.6	19	23.2	43	17.1
20-24	25	27.5	92	31.5	1	12.5	7	19.4	24	29.3	82	32.5
25-29	12	13.2	51	17.5	5	62.5	14	38.9	7	8.5	37	14.7
30-34	23	25.3	67	22.9	1	12.5	9	25.0	22	26.8	58	23.0
35-39	9	9.9	30	10.3	1	12.5	4	11.1	7	8.5	25	9.9
40-44	3	3.3	7	2.4	0	0.0	0	0.0	3	3.7	7	2.8
45+	0	0.0	0	0.0	0	0.0	0	0.0	0	0.0	0	0.0
REPORTED DRINKING	1	1.1	14	4.8	0	0.0	3	8.6	1	1.2	11	4.4
REPORTED SMOKING	28	30.8	116	39.9	0	0.0	5	14.3	28	34.1	111	44.0
UNWED	46	50.5	135	46.6	0	0.0	6	17.1	46	56.1	127	50.6
EDUCATION												
<12 YEARS	14	15.6	46	16.1	0	0.0	1	2.9	14	17.1	45	18.1
12 YEARS	54	60.0	169	59.1	3	42.9	12	35.3	51	62.2	157	63.1
12+ YEARS	22	24.4	71	24.8	4	57.1	21	61.8	17	20.7	47	18.9
<b>PRENATAL CARE</b>												
TRIMESTER CARE BEGAN												
1ST TRIMESTER	55	61.8	190	66.7	7	87.5	32	88.9	47	58.8	157	63.8
3RD TRIMESTER	19	21.3	47	16.5	1	12.5	3	8.3	18	22.5	42	17.1
NO PRENATAL CARE	2	2.2	6	2.1	0	0.0	0	0.0	2	2.4	6	2.4
APNCU INDEX												
ADEQUATE+	15	16.5	58	20.2	0	0.0	7	19.4	15	18.3	51	20.6
ADEQUATE	21	23.1	76	26.5	6	75.0	18	50.0	14	17.1	57	23.0
INTERMEDIATE	18	19.8	52	18.1	1	12.5	6	16.7	17	20.7	46	18.5
INADEQUATE	35	38.5	95	33.1	1	12.5	5	13.9	34	41.5	88	35.5
KESSNER INDEX												
ADEQUATE	39	42.9	138	47.8	7	87.5	27	75.0	31	37.8	110	44.0
INTERMEDIATE	31	34.1	98	33.9	0	0.0	6	16.7	31	37.8	92	36.8
INADEQUATE	19	20.9	47	16.3	1	12.5	3	8.3	18	22.0	42	16.8
<b>C-SECTION BIRTHS</b>	7	7.8	20	6.9	3	37.5	7	20.0	4	4.9	13	5.2
<b>PRE-TERM BIRTHS</b>	13	14.3	34	11.7	0	0.0	2	5.6	13	15.9	32	12.7
<b>LOW BIRTHWEIGHT</b>	6	6.7	20	6.9	0	0.0	3	8.3	6	7.5	17	6.9

Note: Unknown responses are excluded from the denominator when calculating percentages.

(1) Rate per 1,000 population.

\* Rates based on fewer than 10 occurrences are statistically unreliable and should be used with caution.

\*\* Data suppressed for confidentiality concerns if total births to residents, by race, is less than five observations.

**TABLE 2 SELECTED BIRTH STATISTICS REPORTED BY MOTHER'S RACE:  
2000 AND 1998-2000  
FAIRBANKS NORTH STAR BOROUGH**

	TOTAL				WHITE				NATIVE			
	2000 NUMBER	2000 RATE*	1998-2000 NUMBER	1998-2000 RATE*	2000 NUMBER	2000 RATE*	1998-2000 NUMBER	1998-2000 RATE*	2000 NUMBER	2000 RATE*	1998-2000 NUMBER	1998-2000 RATE*
<b>BIRTH RATES (1)</b>												
CRUDE BIRTH RATE	1,536	18.5	4,390	17.6								
TEEN BIRTH RATE												
15-17	52	27.7	141	27.2								
18-19	107	89.8	304	84.0								
15-19	159	51.9	445	50.5								
FERTILITY RATE	1,536	77.9	4,390	74.9								
	2000 NUMBER	2000 %	1998-2000 NUMBER	1998-2000 %	2000 NUMBER	2000 %	1998-2000 NUMBER	1998-2000 %	2000 NUMBER	2000 %	1998-2000 NUMBER	1998-2000 %
<b>BIRTHS</b>												
WITHIN AREA	1,729	100.0	4,940	100.0	1,234	71.4	3,599	72.9	257	14.9	715	14.5
TO RESIDENTS	1,536	100.0	4,390	100.0	1,141	74.3	3,318	75.6	168	10.9	468	10.7
<b>FACILITY</b>												
HOSPITAL	1,477	96.2	4,190	95.4	1,087	95.3	3,137	94.5	167	99.4	465	99.4
BIRTHING CENTER	37	2.4	128	2.9	33	2.9	117	3.5	1	0.6	2	0.4
HOME	15	1.0	42	1.0	15	1.3	42	1.3	0	0.0	0	0.0
OTHER	0	0.0	0	0.0	0	0.0	0	0.0	0	0.0	0	0.0
OUTSIDE ALASKA	7	0.5	30	0.7	6	0.5	22	0.7	0	0.0	1	0.2
<b>MOTHER CHARACTERISTICS</b>												
<b>AGE GROUP</b>												
<15	5	0.3	6	0.1	4	0.4	5	0.2	0	0.0	0	0.0
15-19	159	10.4	445	10.1	102	8.9	299	9.0	31	18.5	83	17.7
20-24	490	31.9	1,412	32.2	364	31.9	1,032	31.1	55	32.7	154	32.9
25-29	432	28.1	1,245	28.4	331	29.0	967	29.1	50	29.8	128	27.4
30-34	289	18.8	819	18.7	214	18.8	646	19.5	17	10.1	58	12.4
35-39	131	8.5	366	8.3	102	8.9	294	8.9	11	6.5	34	7.3
40-44	28	1.8	94	2.1	22	1.9	72	2.2	4	2.4	11	2.4
45+	2	0.1	3	0.1	2	0.2	3	0.1	0	0.0	0	0.0
REPORTED DRINKING	12	0.8	56	1.3	7	0.6	34	1.0	4	2.4	16	3.4
REPORTED SMOKING	214	14.0	563	12.9	150	13.2	407	12.3	46	27.5	122	26.1
UNWED	368	24.0	1,019	23.2	210	18.4	597	18.0	94	56.0	270	57.7
<b>EDUCATION</b>												
<12 YEARS	153	10.3	423	9.9	98	8.7	274	8.4	42	26.1	112	24.6
12 YEARS	708	47.8	1,881	43.8	532	47.5	1,388	42.4	73	45.3	200	44.0
12+ YEARS	619	41.8	1,989	46.3	491	43.8	1,608	49.2	46	28.6	143	31.4
<b>PRENATAL CARE</b>												
<b>TRIMESTER CARE BEGAN</b>												
1ST TRIMESTER	1,159	77.1	3,332	77.0	887	79.4	2,567	78.4	101	62.3	311	68.5
3RD TRIMESTER	79	5.3	248	5.7	51	4.6	174	5.3	17	10.5	37	8.1
NO PRENATAL CARE	2	0.1	7	0.2	1	0.1	5	0.2	0	0.0	1	0.2
<b>APNCU INDEX</b>												
ADEQUATE+	332	22.1	1,064	24.6	239	21.4	789	24.1	41	25.3	107	23.5
ADEQUATE	627	41.7	1,704	39.4	491	44.0	1,333	40.7	47	29.0	142	31.2
INTERMEDIATE	272	18.1	761	17.6	199	17.8	568	17.3	26	16.0	95	20.9
INADEQUATE	271	18.0	792	18.3	187	16.7	581	17.7	48	29.6	110	24.2
<b>KESSNER INDEX</b>												
ADEQUATE	985	65.5	2,830	65.4	760	68.0	2,199	67.1	81	50.0	237	52.1
INTERMEDIATE	438	29.1	1,245	28.8	305	27.3	900	27.5	64	39.5	180	39.6
INADEQUATE	79	5.3	248	5.7	51	4.6	174	5.3	17	10.5	37	8.1
<b>C-SECTION BIRTHS</b>	254	16.8	669	15.4	187	16.6	506	15.4	35	20.8	80	17.1
<b>PRE-TERM BIRTHS</b>	143	9.4	420	9.6	103	9.1	297	9.0	23	14.0	67	14.5
<b>LOW BIRTHWEIGHT</b>	93	6.1	270	6.2	64	5.6	176	5.3	13	7.7	47	10.1

Note: Unknown responses are excluded from the denominator when calculating percentages.

(1) Rate per 1,000 population.

\* Rates based on fewer than 10 occurrences are statistically unreliable and should be used with caution.

\*\* Data suppressed for confidentiality concerns if total births to residents, by race, is less than five observations.

**TABLE 2 SELECTED BIRTH STATISTICS REPORTED BY MOTHER'S RACE:  
2000 AND 1998-2000**

**HAINES BOROUGH**

	TOTAL				WHITE				NATIVE			
	2000 NUMBER	2000 RATE*	1998-2000 NUMBER	1998-2000 RATE*	2000 NUMBER	2000 RATE*	1998-2000 NUMBER	1998-2000 RATE*	2000 NUMBER	2000 RATE*	1998-2000 NUMBER	1998-2000 RATE*
<b>BIRTH RATES (1)</b>												
CRUDE BIRTH RATE	19	7.9	66	9								
TEEN BIRTH RATE												
15-17	0	0.0	1	4.5 *								
18-19	2	117.6 *	7	95.9 *								
15-19	2	25.6 *	8	26.9 *								
FERTILITY RATE	19	40.8	66	44.9								

	TOTAL				WHITE				NATIVE			
	2000 NUMBER	2000 %	1998-2000 NUMBER	1998-2000 %	2000 NUMBER	2000 %	1998-2000 NUMBER	1998-2000 %	2000 NUMBER	2000 %	1998-2000 NUMBER	1998-2000 %
<b>BIRTHS</b>												
WITHIN AREA	2	100.0	3	100.0	2	100.0	2	66.7	0	0.0	1	33.3
TO RESIDENTS	19	100.0	66	100.0	16	84.2	43	65.2	2	10.5	16	24.2
<b>FACILITY</b>												
HOSPITAL	10	52.6	38	57.6	8	50.0	24	55.8	2	100.0	14	87.5
BIRTHING CENTER	7	36.8	16	24.2	7	43.8	15	34.9	0	0.0	1	6.3
HOME	0	0.0	1	1.5	0	0.0	1	2.3	0	0.0	0	0.0
OTHER	1	5.3	3	4.5	1	6.3	2	4.7	0	0.0	1	6.3
OUTSIDE ALASKA	1	5.3	8	12.1	0	0.0	1	2.3	0	0.0	0	0.0
<b>MOTHER CHARACTERISTICS</b>												
<b>AGE GROUP</b>												
<15	0	0.0	0	0.0	**	**	0	0.0	**	**	0	0.0
15-19	2	10.5	8	12.1	**	**	4	9.3	**	**	3	18.8
20-24	5	26.3	18	27.3	**	**	7	16.3	**	**	10	62.5
25-29	3	15.8	12	18.2	**	**	8	18.6	**	**	2	12.5
30-34	2	10.5	14	21.2	**	**	13	30.2	**	**	0	0.0
35-39	7	36.8	13	19.7	**	**	11	25.6	**	**	1	6.3
40-44	0	0.0	1	1.5	**	**	0	0.0	**	**	0	0.0
45+	0	0.0	0	0.0	**	**	0	0.0	**	**	0	0.0
REPORTED DRINKING	0	0.0	2	3.5	**	**	1	2.4	**	**	1	6.7
REPORTED SMOKING	4	23.5	8	14.0	**	**	6	14.3	**	**	2	13.3
UNWED	7	38.9	21	35.6	**	**	12	27.9	**	**	9	56.3
<b>EDUCATION</b>												
<12 YEARS	1	5.6	4	6.9	**	**	1	2.4	**	**	3	18.8
12 YEARS	12	66.7	34	58.6	**	**	24	57.1	**	**	10	62.5
12+ YEARS	5	27.8	20	34.5	**	**	17	40.5	**	**	3	18.8
<b>PRENATAL CARE</b>												
<b>TRIMESTER CARE BEGAN</b>												
1ST TRIMESTER	12	66.7	44	75.9	**	**	32	76.2	**	**	12	75.0
3RD TRIMESTER	1	5.6	2	3.4	**	**	0	0.0	**	**	2	12.5
NO PRENATAL CARE	0	0.0	1	1.7	**	**	1	2.4	**	**	0	0.0
<b>APNCU INDEX</b>												
ADEQUATE+	5	29.4	14	24.1	**	**	10	23.8	**	**	4	25.0
ADEQUATE	6	35.3	19	32.8	**	**	17	40.5	**	**	2	12.5
INTERMEDIATE	3	17.6	13	22.4	**	**	8	19.0	**	**	5	31.3
INADEQUATE	3	17.6	11	19.0	**	**	6	14.3	**	**	5	31.3
<b>KESSNER INDEX</b>												
ADEQUATE	10	58.8	29	50.0	**	**	24	57.1	**	**	5	31.3
INTERMEDIATE	6	35.3	26	44.8	**	**	17	40.5	**	**	9	56.3
INADEQUATE	1	5.9	2	3.4	**	**	0	0.0	**	**	2	12.5
<b>C-SECTION BIRTHS</b>	5	29.4	18	31.0	**	**	15	34.9	**	**	3	20.0
<b>PRE-TERM BIRTHS</b>	2	11.1	5	8.5	**	**	4	9.3	**	**	1	6.3
<b>LOW BIRTHWEIGHT</b>	1	5.6	3	5.2	**	**	3	7.1	**	**	0	0.0

Note: Unknown responses are excluded from the denominator when calculating percentages.

(1) Rate per 1,000 population.

\* Rates based on fewer than 10 occurrences are statistically unreliable and should be used with caution.

\*\* Data suppressed for confidentiality concerns if total births to residents, by race, is less than five observations.

**TABLE 2** **SELECTED BIRTH STATISTICS REPORTED BY MOTHER'S RACE:**  
**2000 AND 1998-2000**  
**JUNEAU BOROUGH**

	TOTAL				WHITE				NATIVE			
	2000 NUMBER	2000 RATE*	1998-2000 NUMBER	1998-2000 RATE*	2000 NUMBER	2000 RATE*	1998-2000 NUMBER	1998-2000 RATE*	2000 NUMBER	2000 RATE*	1998-2000 NUMBER	1998-2000 RATE*
<b>BIRTH RATES (1)</b>												
CRUDE BIRTH RATE	409	13.3	1,199	13.2								
TEEN BIRTH RATE												
15-17	12	16.6	39	18.1								
18-19	34	88.3	85	70.7								
15-19	46	41.5	124	36.9								
FERTILITY RATE	409	58.5	1,199	59.4								
	2000 NUMBER	2000 %	1998-2000 NUMBER	1998-2000 %	2000 NUMBER	2000 %	1998-2000 NUMBER	1998-2000 %	2000 NUMBER	2000 %	1998-2000 NUMBER	1998-2000 %
<b>BIRTHS</b>												
WITHIN AREA	423	100.0	1,254	100.0	293	69.3	900	71.8	86	20.3	252	20.1
TO RESIDENTS	409	100.0	1,199	100.0	289	70.7	861	71.8	76	18.6	231	19.3
<b>FACILITY</b>												
HOSPITAL	354	86.6	1,047	87.3	242	83.7	728	84.6	71	93.4	220	95.2
BIRTHING CENTER	30	7.3	79	6.6	24	8.3	68	7.9	4	5.3	6	2.6
HOME	12	2.9	47	3.9	11	3.8	42	4.9	1	1.3	4	1.7
OTHER	0	0.0	3	0.3	0	0.0	2	0.2	0	0.0	1	0.4
OUTSIDE ALASKA	13	3.2	23	1.9	12	4.2	21	2.4	0	0.0	0	0.0
<b>MOTHER CHARACTERISTICS</b>												
<b>AGE GROUP</b>												
<15	0	0.0	2	0.2	0	0.0	0	0.0	0	0.0	2	0.9
15-19	46	11.2	124	10.3	29	10.0	62	7.2	13	17.1	51	22.1
20-24	96	23.5	267	22.3	67	23.2	186	21.6	21	27.6	60	26.0
25-29	103	25.2	325	27.1	66	22.8	236	27.4	24	31.6	63	27.3
30-34	95	23.2	274	22.9	73	25.3	213	24.7	8	10.5	33	14.3
35-39	52	12.7	166	13.8	43	14.9	132	15.3	6	7.9	17	7.4
40-44	16	3.9	39	3.3	10	3.5	30	3.5	4	5.3	5	2.2
45+	1	0.2	2	0.2	1	0.3	2	0.2	0	0.0	0	0.0
REPORTED DRINKING	10	2.6	31	2.7	7	2.6	22	2.7	2	2.6	7	3.1
REPORTED SMOKING	69	17.4	184	15.8	47	16.9	118	14.2	18	23.7	59	26.1
UNWED	137	33.7	368	30.8	71	24.8	188	22.0	53	69.7	151	65.4
<b>EDUCATION</b>												
<12 YEARS	43	11.2	118	10.3	20	7.2	50	6.0	21	29.2	60	27.6
12 YEARS	171	44.4	473	41.1	104	37.5	307	36.7	42	58.3	118	54.4
12+ YEARS	171	44.4	559	48.6	153	55.2	480	57.3	9	12.5	39	18.0
<b>PRENATAL CARE</b>												
<b>TRIMESTER CARE BEGAN</b>												
1ST TRIMESTER	352	88.0	1,038	87.8	253	89.7	756	89.3	61	81.3	187	81.7
3RD TRIMESTER	8	2.0	22	1.9	5	1.8	13	1.5	2	2.7	7	3.1
NO PRENATAL CARE	2	0.5	2	0.2	2	0.7	2	0.2	0	0.0	0	0.0
<b>APNCU INDEX</b>												
ADEQUATE+	104	26.4	287	24.6	87	30.7	230	27.2	10	14.5	36	16.4
ADEQUATE	139	35.3	432	37.0	103	36.4	333	39.4	20	29.0	57	25.9
INTERMEDIATE	111	28.2	322	27.5	67	23.7	205	24.3	29	42.0	86	39.1
INADEQUATE	38	9.6	126	10.8	24	8.5	75	8.9	10	14.5	41	18.6
<b>KESSNER INDEX</b>												
ADEQUATE	303	76.7	873	74.6	228	80.6	661	78.2	43	61.4	136	61.5
INTERMEDIATE	82	20.8	273	23.3	48	17.0	169	20.0	25	35.7	78	35.3
INADEQUATE	8	2.0	22	1.9	5	1.8	13	1.5	2	2.9	7	3.2
<b>C-SECTION BIRTHS</b>	114	28.1	304	25.5	81	28.3	234	27.3	18	24.0	39	17.0
<b>PRE-TERM BIRTHS</b>	33	8.1	113	9.5	19	6.6	69	8.0	9	11.8	28	12.1
<b>LOW BIRTHWEIGHT</b>	20	4.9	49	4.1	15	5.2	32	3.7	4	5.3	12	5.2

Note: Unknown responses are excluded from the denominator when calculating percentages.

(1) Rate per 1,000 population.

\* Rates based on fewer than 10 occurrences are statistically unreliable and should be used with caution.

\*\* Data suppressed for confidentiality concerns if total births to residents, by race, is less than five observations.



**TABLE 2 SELECTED BIRTH STATISTICS REPORTED BY MOTHER'S RACE:  
2000 AND 1998-2000  
KENAI PENINSULA BOROUGH**

	TOTAL				WHITE				NATIVE			
	2000 NUMBER	2000 RATE*	1998-2000 NUMBER	1998-2000 RATE*	2000 NUMBER	2000 RATE*	1998-2000 NUMBER	1998-2000 RATE*	2000 NUMBER	2000 RATE*	1998-2000 NUMBER	1998-2000 RATE*
<b>BIRTH RATES (1)</b>												
CRUDE BIRTH RATE	596	12	1,915	13								
TEEN BIRTH RATE												
15-17	18	13.3	66	15.9								
18-19	46	81.4	149	81.8								
15-19	64	33.3	215	36.1								
FERTILITY RATE	596	59.5	1,915	62.4								
	TOTAL				WHITE				NATIVE			
	2000 NUMBER	2000 %	1998-2000 NUMBER	1998-2000 %	2000 NUMBER	2000 %	1998-2000 NUMBER	1998-2000 %	2000 NUMBER	2000 %	1998-2000 NUMBER	1998-2000 %
<b>BIRTHS</b>												
WITHIN AREA	508	100.0	1,652	100.0	455	89.6	1,471	89.0	35	6.9	124	7.5
TO RESIDENTS	596	100.0	1,915	100.0	529	88.8	1,674	87.4	46	7.7	171	8.9
<b>FACILITY</b>												
HOSPITAL	555	93.1	1,793	93.6	489	92.4	1,558	93.1	45	97.8	169	98.8
BIRTHING CENTER	18	3.0	40	2.1	18	3.4	38	2.3	0	0.0	1	0.6
HOME	19	3.2	65	3.4	18	3.4	64	3.8	1	2.2	1	0.6
OTHER	0	0.0	3	0.2	0	0.0	3	0.2	0	0.0	0	0.0
OUTSIDE ALASKA	4	0.7	14	0.7	4	0.8	11	0.7	0	0.0	0	0.0
<b>MOTHER CHARACTERISTICS</b>												
<b>AGE GROUP</b>												
<15	0	0.0	1	0.1	0	0.0	1	0.1	0	0.0	0	0.0
15-19	64	10.7	215	11.2	54	10.2	174	10.4	7	15.2	34	19.9
20-24	162	27.2	525	27.4	146	27.6	460	27.5	11	23.9	49	28.7
25-29	164	27.5	527	27.5	150	28.4	463	27.7	10	21.7	43	25.1
30-34	103	17.3	361	18.9	88	16.6	318	19.0	10	21.7	28	16.4
35-39	78	13.1	220	11.5	69	13.0	196	11.7	6	13.0	14	8.2
40-44	25	4.2	62	3.2	22	4.2	58	3.5	2	4.3	3	1.8
45+	0	0.0	3	0.2	0	0.0	3	0.2	0	0.0	0	0.0
REPORTED DRINKING	19	3.2	47	2.5	16	3.0	35	2.1	2	4.3	11	6.5
REPORTED SMOKING	109	18.4	374	19.6	97	18.4	303	18.1	11	23.9	60	35.3
UNWED	161	27.1	532	27.8	138	26.1	430	25.7	16	34.8	80	46.8
<b>EDUCATION</b>												
<12 YEARS	70	12.2	250	13.5	61	11.9	216	13.3	8	17.8	30	18.2
12 YEARS	249	43.2	835	45.0	221	43.2	712	43.7	19	42.2	92	55.8
12+ YEARS	257	44.6	772	41.6	229	44.8	702	43.1	18	40.0	43	26.1
<b>PRENATAL CARE</b>												
<b>TRIMESTER CARE BEGAN</b>												
1ST TRIMESTER	461	80.2	1,473	79.2	409	80.4	1,294	79.7	38	82.6	128	76.6
3RD TRIMESTER	22	3.8	65	3.5	20	3.9	57	3.5	1	2.2	4	2.4
NO PRENATAL CARE	5	0.9	27	1.4	5	1.0	25	1.5	0	0.0	2	1.2
<b>APNCU INDEX</b>												
ADEQUATE+	135	23.8	471	25.2	116	23.1	417	25.5	14	30.4	43	25.7
ADEQUATE	265	46.7	851	45.6	237	47.1	741	45.4	19	41.3	76	45.5
INTERMEDIATE	91	16.0	259	13.9	81	16.1	230	14.1	9	19.6	22	13.2
INADEQUATE	72	12.7	258	13.8	64	12.7	220	13.5	4	8.7	24	14.4
<b>KESSNER INDEX</b>												
ADEQUATE	402	70.7	1,290	69.1	358	71.0	1,145	70.0	31	67.4	100	59.9
INTERMEDIATE	140	24.6	486	26.0	121	24.0	408	25.0	14	30.4	61	36.5
INADEQUATE	22	3.9	65	3.5	20	4.0	57	3.5	1	2.2	4	2.4
<b>C-SECTION BIRTHS</b>	122	20.6	311	16.3	109	20.8	280	16.8	9	19.6	21	12.4
<b>PRE-TERM BIRTHS</b>	56	9.4	193	10.1	49	9.3	166	10.0	4	8.7	20	11.7
<b>LOW BIRTHWEIGHT</b>	26	4.4	105	5.5	23	4.4	89	5.4	1	2.2	9	5.3

Note: Unknown responses are excluded from the denominator when calculating percentages.  
 (1) Rate per 1,000 population.  
 \* Rates based on fewer than 10 occurrences are statistically unreliable and should be used with caution.  
 \*\* Data suppressed for confidentiality concerns if total births to residents, by race, is less than five observations.

**TABLE 2 SELECTED BIRTH STATISTICS REPORTED BY MOTHER'S RACE:  
2000 AND 1998-2000**

**KETCHIKAN GATEWAY BOROUGH**

	TOTAL				WHITE				NATIVE			
	2000 NUMBER	2000 RATE*	1998-2000 NUMBER	1998-2000 RATE*	2000 NUMBER	2000 RATE*	1998-2000 NUMBER	1998-2000 RATE*	2000 NUMBER	2000 RATE*	1998-2000 NUMBER	1998-2000 RATE*
<b>BIRTH RATES (1)</b>												
CRUDE BIRTH RATE	193	13.7	576	13.7								
TEEN BIRTH RATE												
15-17	8	23.1 *	31	29.9								
18-19	21	128.8	44	82.9								
15-19	29	57.0	75	47.9								
FERTILITY RATE	193	63.8	576	64.1								
	TOTAL				WHITE				NATIVE			
	2000 NUMBER	2000 %	1998-2000 NUMBER	1998-2000 %	2000 NUMBER	2000 %	1998-2000 NUMBER	1998-2000 %	2000 NUMBER	2000 %	1998-2000 NUMBER	1998-2000 %
<b>BIRTHS</b>												
WITHIN AREA	278	100.0	846	100.0	178	64.0	572	67.6	87	31.3	230	27.2
TO RESIDENTS	193	100.0	576	100.0	140	72.5	412	71.5	39	20.2	124	21.5
<b>FACILITY</b>												
HOSPITAL	177	91.7	547	95.0	127	90.7	390	94.7	39	100.0	120	96.8
BIRTHING CENTER	0	0.0	0	0.0	0	0.0	0	0.0	0	0.0	0	0.0
HOME	6	3.1	9	1.6	5	3.6	8	1.9	0	0.0	0	0.0
OTHER	0	0.0	0	0.0	0	0.0	0	0.0	0	0.0	0	0.0
OUTSIDE ALASKA	10	5.2	20	3.5	8	5.7	14	3.4	0	0.0	4	3.2
<b>MOTHER CHARACTERISTICS</b>												
<b>AGE GROUP</b>												
<15	0	0.0	0	0.0	0	0.0	0	0.0	0	0.0	0	0.0
15-19	29	15.0	75	13.0	17	12.1	43	10.4	9	23.1	26	21.0
20-24	49	25.4	150	26.0	28	20.0	99	24.0	17	43.6	43	34.7
25-29	53	27.5	162	28.1	42	30.0	120	29.1	7	17.9	29	23.4
30-34	42	21.8	117	20.3	34	24.3	89	21.6	5	12.8	20	16.1
35-39	13	6.7	57	9.9	12	8.6	49	11.9	1	2.6	5	4.0
40-44	6	3.1	14	2.4	6	4.3	11	2.7	0	0.0	1	0.8
45+	1	0.5	1	0.2	1	0.7	1	0.2	0	0.0	0	0.0
REPORTED DRINKING	6	3.2	20	3.6	5	3.7	13	3.2	1	2.6	6	5.0
REPORTED SMOKING	42	21.9	143	24.9	31	22.3	97	23.6	9	23.1	41	33.1
UNWED	69	35.8	187	32.5	41	29.3	108	26.2	22	56.4	68	54.8
<b>EDUCATION</b>												
<12 YEARS	31	16.5	80	14.6	14	10.2	41	10.4	13	34.2	34	29.8
12 YEARS	81	43.1	245	44.8	55	40.1	165	41.7	22	57.9	64	56.1
12+ YEARS	76	40.4	222	40.6	68	49.6	190	48.0	3	7.9	16	14.0
<b>PRENATAL CARE</b>												
<b>TRIMESTER CARE BEGAN</b>												
1ST TRIMESTER	147	84.0	464	87.2	113	86.9	346	89.4	24	72.7	87	81.3
3RD TRIMESTER	1	0.6	2	0.4	0	0.0	0	0.0	1	3.0	1	0.9
NO PRENATAL CARE	0	0.0	1	0.2	0	0.0	0	0.0	0	0.0	1	1.0
<b>APNCU INDEX</b>												
ADEQUATE+	56	32.4	135	25.7	46	35.4	91	23.6	7	21.9	32	30.8
ADEQUATE	89	51.4	271	51.5	67	51.5	209	54.3	17	53.1	47	45.2
INTERMEDIATE	14	8.1	82	15.6	11	8.5	69	17.9	2	6.3	8	7.7
INADEQUATE	14	8.1	37	7.0	6	4.6	16	4.2	6	18.8	16	15.4
<b>KESSNER INDEX</b>												
ADEQUATE	139	80.3	432	82.1	109	83.8	329	85.5	22	68.8	76	73.1
INTERMEDIATE	33	19.1	91	17.3	21	16.2	56	14.5	9	28.1	26	25.0
INADEQUATE	1	0.6	2	0.4	0	0.0	0	0.0	1	3.1	1	1.0
<b>C-SECTION BIRTHS</b>	25	13.0	82	14.2	20	14.3	64	15.5	3	7.7	11	8.9
<b>PRE-TERM BIRTHS</b>	23	12.2	56	9.9	16	11.6	37	9.1	5	13.2	13	10.7
<b>LOW BIRTHWEIGHT</b>	12	6.2	19	3.3	9	6.4	13	3.2	1	2.6	4	3.2

Note: Unknown responses are excluded from the denominator when calculating percentages.

(1) Rate per 1,000 population.

\* Rates based on fewer than 10 occurrences are statistically unreliable and should be used with caution.

\*\* Data suppressed for confidentiality concerns if total births to residents, by race, is less than five observations.

**TABLE 2 SELECTED BIRTH STATISTICS REPORTED BY MOTHER'S RACE:  
2000 AND 1998-2000**

**KODIAK ISLAND BOROUGH**

	TOTAL				WHITE				NATIVE			
	2000 NUMBER	2000 RATE*	1998-2000 NUMBER	1998-2000 RATE*	2000 NUMBER	2000 RATE*	1998-2000 NUMBER	1998-2000 RATE*	2000 NUMBER	2000 RATE*	1998-2000 NUMBER	1998-2000 RATE*
<b>BIRTH RATES (1)</b>												
CRUDE BIRTH RATE	233	16.7	746	17.9								
TEEN BIRTH RATE												
15-17	4	11.7 *	18	18.3								
18-19	10	65.8	51	113.3								
15-19	14	28.4	69	48.1								
FERTILITY RATE	233	76.6	746	83.9								

	TOTAL				WHITE				NATIVE			
	2000 NUMBER	2000 %	1998-2000 NUMBER	1998-2000 %	2000 NUMBER	2000 %	1998-2000 NUMBER	1998-2000 %	2000 NUMBER	2000 %	1998-2000 NUMBER	1998-2000 %
<b>BIRTHS</b>												
WITHIN AREA	216	100.0	685	100.0	136	63.0	412	60.1	31	14.4	107	15.6
TO RESIDENTS	233	100.0	746	100.0	139	59.7	444	59.5	44	18.9	133	17.8
<b>FACILITY</b>												
HOSPITAL	224	96.1	716	96.0	130	93.5	416	93.7	44	100.0	131	98.5
BIRTHING CENTER	0	0.0	1	0.1	0	0.0	1	0.2	0	0.0	0	0.0
HOME	8	3.4	20	2.7	8	5.8	19	4.3	0	0.0	1	0.8
OTHER	0	0.0	2	0.3	0	0.0	1	0.2	0	0.0	1	0.8
OUTSIDE ALASKA	1	0.4	7	0.9	1	0.7	7	1.6	0	0.0	0	0.0
<b>MOTHER CHARACTERISTICS</b>												
<b>AGE GROUP</b>												
<15	0	0.0	1	0.1	0	0.0	0	0.0	0	0.0	1	0.8
15-19	14	6.0	69	9.2	8	5.8	31	7.0	5	11.4	22	16.5
20-24	64	27.5	170	22.8	36	25.9	94	21.2	14	31.8	35	26.3
25-29	54	23.2	199	26.7	34	24.5	119	26.8	10	22.7	40	30.1
30-34	60	25.8	173	23.2	38	27.3	114	25.7	8	18.2	20	15.0
35-39	31	13.3	100	13.4	18	12.9	62	14.0	4	9.1	11	8.3
40-44	10	4.3	34	4.6	5	3.6	24	5.4	3	6.8	4	3.0
45+	0	0.0	0	0.0	0	0.0	0	0.0	0	0.0	0	0.0
REPORTED DRINKING	3	1.3	20	2.7	0	0.0	8	1.8	3	7.5	11	8.5
REPORTED SMOKING	36	15.9	105	14.2	17	12.4	48	10.9	18	45.0	51	39.5
UNWED	55	23.6	187	25.1	20	14.4	59	13.3	17	38.6	68	51.1
<b>EDUCATION</b>												
<12 YEARS	33	14.3	92	12.5	12	8.7	40	9.0	7	15.9	20	15.3
12 YEARS	85	37.0	321	43.5	48	34.8	163	36.9	19	43.2	75	57.3
12+ YEARS	112	48.7	325	44.0	78	56.5	239	54.1	18	40.9	36	27.5
<b>PRENATAL CARE</b>												
<b>TRIMESTER CARE BEGAN</b>												
1ST TRIMESTER	186	80.5	564	76.3	118	85.5	356	81.1	36	83.7	107	81.7
3RD TRIMESTER	8	3.5	34	4.6	4	2.9	14	3.2	1	2.3	7	5.3
NO PRENATAL CARE	0	0.0	4	0.5	0	0.0	3	0.7	0	0.0	1	0.8
<b>APNCU INDEX</b>												
ADEQUATE+	38	16.7	101	13.7	19	13.8	66	15.0	10	25.0	18	14.0
ADEQUATE	79	34.6	240	32.5	54	39.1	163	37.0	12	30.0	34	26.4
INTERMEDIATE	78	34.2	242	32.7	50	36.2	141	32.0	12	30.0	49	38.0
INADEQUATE	33	14.5	152	20.6	15	10.9	68	15.4	6	15.0	27	20.9
<b>KESSNER INDEX</b>												
ADEQUATE	152	66.7	431	58.3	98	71.0	292	66.2	29	72.5	72	55.8
INTERMEDIATE	68	29.8	270	36.5	36	26.1	132	29.9	10	25.0	49	38.0
INADEQUATE	8	3.5	34	4.6	4	2.9	14	3.2	1	2.5	7	5.4
<b>C-SECTION BIRTHS</b>	32	13.7	116	15.5	17	12.2	66	14.9	11	25.0	23	17.3
<b>PRE-TERM BIRTHS</b>	25	10.7	70	9.4	9	6.5	33	7.4	8	18.2	17	12.8
<b>LOW BIRTHWEIGHT</b>	12	5.2	50	6.7	2	1.4	21	4.8	3	6.8	7	5.3

Note: Unknown responses are excluded from the denominator when calculating percentages.

(1) Rate per 1,000 population.

\* Rates based on fewer than 10 occurrences are statistically unreliable and should be used with caution.

\*\* Data suppressed for confidentiality concerns if total births to residents, by race, is less than five observations.

**TABLE 2** **SELECTED BIRTH STATISTICS REPORTED BY MOTHER'S RACE:**  
**2000 AND 1998-2000**  
**LAKE AND PENINSULA BOROUGH**

	TOTAL				WHITE				NATIVE			
	2000 NUMBER	2000 RATE*	1998-2000 NUMBER	1998-2000 RATE*	2000 NUMBER	2000 RATE*	1998-2000 NUMBER	1998-2000 RATE*	2000 NUMBER	2000 RATE*	1998-2000 NUMBER	1998-2000 RATE*
<b>BIRTH RATES (1)</b>												
CRUDE BIRTH RATE	23	12.6	80	14.7								
TEEN BIRTH RATE												
15-17	2	32.8 *	5	29.8 *								
18-19	2	80.0 *	10	125.0								
15-19	4	46.5 *	15	60.5								
FERTILITY RATE	23	63.4	80	73.9								

	TOTAL				WHITE				NATIVE			
	2000 NUMBER	2000 %	1998-2000 NUMBER	1998-2000 %	2000 NUMBER	2000 %	1998-2000 NUMBER	1998-2000 %	2000 NUMBER	2000 %	1998-2000 NUMBER	1998-2000 %
<b>BIRTHS</b>												
WITHIN AREA	1	100.0	1	100.0	0	0.0	0	0.0	1	100.0	1	100.0
TO RESIDENTS	23	100.0	80	100.0	7	30.4	22	27.5	15	65.2	56	70.0
<b>FACILITY</b>												
HOSPITAL	21	91.3	75	93.8	6	85.7	18	81.8	14	93.3	55	98.2
BIRTHING CENTER	1	4.3	4	5.0	1	14.3	4	18.2	0	0.0	0	0.0
HOME	1	4.3	1	1.3	0	0.0	0	0.0	1	6.7	1	1.8
OTHER	0	0.0	0	0.0	0	0.0	0	0.0	0	0.0	0	0.0
OUTSIDE ALASKA	0	0.0	0	0.0	0	0.0	0	0.0	0	0.0	0	0.0
<b>MOTHER CHARACTERISTICS</b>												
<b>AGE GROUP</b>												
<15	0	0.0	0	0.0	0	0.0	0	0.0	0	0.0	0	0.0
15-19	4	17.4	15	18.8	0	0.0	0	0.0	4	26.7	15	26.8
20-24	7	30.4	24	30.0	2	28.6	6	27.3	4	26.7	16	28.6
25-29	7	30.4	21	26.3	3	42.9	6	27.3	4	26.7	15	26.8
30-34	2	8.7	7	8.8	0	0.0	4	18.2	2	13.3	3	5.4
35-39	3	13.0	10	12.5	2	28.6	5	22.7	1	6.7	5	8.9
40-44	0	0.0	3	3.8	0	0.0	1	4.5	0	0.0	2	3.6
45+	0	0.0	0	0.0	0	0.0	0	0.0	0	0.0	0	0.0
REPORTED DRINKING	2	9.1	7	8.9	0	0.0	3	13.6	2	14.3	4	7.3
REPORTED SMOKING	10	43.5	25	31.3	0	0.0	0	0.0	10	66.7	25	44.6
UNWED	10	43.5	36	45.0	0	0.0	0	0.0	10	66.7	36	64.3
<b>EDUCATION</b>												
<12 YEARS	5	21.7	19	24.4	1	14.3	1	4.5	4	26.7	18	33.3
12 YEARS	13	56.5	38	48.7	1	14.3	5	22.7	11	73.3	31	57.4
12+ YEARS	5	21.7	21	26.9	5	71.4	16	72.7	0	0.0	5	9.3
<b>PRENATAL CARE</b>												
<b>TRIMESTER CARE BEGAN</b>												
1ST TRIMESTER	17	77.3	62	78.5	4	57.1	16	72.7	13	92.9	45	81.8
3RD TRIMESTER	0	0.0	2	2.5	0	0.0	1	4.5	0	0.0	1	1.8
NO PRENATAL CARE	1	4.3	1	1.3	0	0.0	0	0.0	1	6.7	1	1.9
<b>APNCU INDEX</b>												
ADEQUATE+	11	47.8	28	35.9	3	42.9	9	40.9	8	53.3	19	35.2
ADEQUATE	4	17.4	18	23.1	0	0.0	3	13.6	4	26.7	15	27.8
INTERMEDIATE	5	21.7	16	20.5	3	42.9	5	22.7	2	13.3	10	18.5
INADEQUATE	2	8.7	15	19.2	1	14.3	5	22.7	0	0.0	9	16.7
<b>KESSNER INDEX</b>												
ADEQUATE	13	56.5	42	53.8	2	28.6	11	50.0	11	73.3	31	57.4
INTERMEDIATE	9	39.1	33	42.3	5	71.4	10	45.5	3	20.0	21	38.9
INADEQUATE	0	0.0	2	2.6	0	0.0	1	4.5	0	0.0	1	1.9
<b>C-SECTION BIRTHS</b>	1	4.3	4	5.0	0	0.0	0	0.0	1	6.7	3	5.4
<b>PRE-TERM BIRTHS</b>	4	17.4	10	12.5	2	28.6	5	22.7	2	13.3	5	8.9
<b>LOW BIRTHWEIGHT</b>	3	13.0	6	7.5	2	28.6	4	18.2	1	6.7	2	3.6

Note: Unknown responses are excluded from the denominator when calculating percentages.

(1) Rate per 1,000 population.

\* Rates based on fewer than 10 occurrences are statistically unreliable and should be used with caution.

\*\* Data suppressed for confidentiality concerns if total births to residents, by race, is less than five observations.

**TABLE 2 SELECTED BIRTH STATISTICS REPORTED BY MOTHER'S RACE:  
2000 AND 1998-2000**

**MATANUSKA-SUSITNA BOROUGH**

	TOTAL				WHITE				NATIVE			
	2000 NUMBER	2000 RATE*	1998-2000 NUMBER	1998-2000 RATE*	2000 NUMBER	2000 RATE*	1998-2000 NUMBER	1998-2000 RATE*	2000 NUMBER	2000 RATE*	1998-2000 NUMBER	1998-2000 RATE*
<b>BIRTH RATES (1)</b>												
CRUDE BIRTH RATE	862	14.5	2,262	13.4								
TEEN BIRTH RATE												
15-17	25	14.7	79	15.0								
18-19	64	86.3	157	76.6								
15-19	89	36.4	236	32.2								
FERTILITY RATE	862	66.9	2,262	60.4								

	TOTAL				WHITE				NATIVE			
	2000 NUMBER	2000 %	1998-2000 NUMBER	1998-2000 %	2000 NUMBER	2000 %	1998-2000 NUMBER	1998-2000 %	2000 NUMBER	2000 %	1998-2000 NUMBER	1998-2000 %
<b>BIRTHS</b>												
WITHIN AREA	555	100.0	1,504	100.0	524	94.4	1,421	94.5	14	2.5	45	3.0
TO RESIDENTS	862	100.0	2,262	100.0	773	89.7	2,052	90.7	58	6.7	148	6.5
<b>FACILITY</b>												
HOSPITAL	757	87.8	1,969	87.0	673	87.1	1,769	86.2	56	96.6	145	98.0
BIRTHING CENTER	90	10.4	229	10.1	86	11.1	220	10.7	1	1.7	2	1.4
HOME	13	1.5	56	2.5	12	1.6	55	2.7	1	1.7	1	0.7
OTHER	0	0.0	1	0.0	0	0.0	1	0.0	0	0.0	0	0.0
OUTSIDE ALASKA	2	0.2	7	0.3	2	0.3	7	0.3	0	0.0	0	0.0
<b>MOTHER CHARACTERISTICS</b>												
<b>AGE GROUP</b>												
<15	1	0.1	3	0.1	1	0.1	2	0.1	0	0.0	1	0.7
15-19	89	10.3	236	10.4	79	10.2	202	9.8	9	15.5	28	18.9
20-24	223	25.9	598	26.4	201	26.0	553	26.9	18	31.0	37	25.0
25-29	251	29.1	656	29.0	223	28.8	596	29.0	15	25.9	41	27.7
30-34	175	20.3	430	19.0	160	20.7	392	19.1	12	20.7	27	18.2
35-39	94	10.9	264	11.7	85	11.0	239	11.6	3	5.2	11	7.4
40-44	28	3.2	71	3.1	23	3.0	64	3.1	1	1.7	3	2.0
45+	1	0.1	4	0.2	1	0.1	4	0.2	0	0.0	0	0.0
REPORTED DRINKING	15	1.8	44	2.0	13	1.7	39	1.9	1	1.8	4	2.7
REPORTED SMOKING	166	19.5	470	20.9	146	19.1	420	20.6	16	28.6	43	29.5
UNWED	255	29.6	644	28.5	220	28.5	559	27.2	27	46.6	72	48.6
<b>EDUCATION</b>												
<12 YEARS	103	12.4	282	12.7	89	11.9	238	11.8	10	17.5	34	23.3
12 YEARS	345	41.6	964	43.5	314	41.9	876	43.4	27	47.4	72	49.3
12+ YEARS	381	46.0	972	43.8	347	46.3	906	44.9	20	35.1	40	27.4
<b>PRENATAL CARE</b>												
<b>TRIMESTER CARE BEGAN</b>												
1ST TRIMESTER	678	80.4	1,697	76.2	620	81.6	1,549	76.4	38	69.1	104	72.7
3RD TRIMESTER	25	3.0	124	5.6	19	2.5	113	5.6	3	5.5	6	4.2
NO PRENATAL CARE	2	0.2	6	0.3	1	0.1	4	0.2	1	1.8	2	1.4
<b>APNCU INDEX</b>												
ADEQUATE+	256	30.8	670	30.3	234	31.3	621	30.9	17	30.9	34	24.1
ADEQUATE	402	48.4	1,009	45.7	367	49.1	928	46.2	22	40.0	56	39.7
INTERMEDIATE	74	8.9	205	9.3	63	8.4	170	8.5	6	10.9	26	18.4
INADEQUATE	96	11.6	319	14.4	82	11.0	287	14.3	9	16.4	23	16.3
<b>KESSNER INDEX</b>												
ADEQUATE	622	74.9	1,558	70.5	571	76.4	1,436	71.4	34	61.8	85	60.3
INTERMEDIATE	181	21.8	521	23.6	156	20.9	457	22.7	17	30.9	48	34.0
INADEQUATE	25	3.0	124	5.6	19	2.5	113	5.6	3	5.5	6	4.3
<b>C-SECTION BIRTHS</b>	172	20.5	432	19.5	155	20.7	398	19.8	8	14.0	18	12.2
<b>PRE-TERM BIRTHS</b>	82	9.6	205	9.1	72	9.3	182	8.9	8	14.3	18	12.3
<b>LOW BIRTHWEIGHT</b>	58	6.7	131	5.8	50	6.5	116	5.7	7	12.1	12	8.1

Note: Unknown responses are excluded from the denominator when calculating percentages.

(1) Rate per 1,000 population.

\* Rates based on fewer than 10 occurrences are statistically unreliable and should be used with caution.

\*\* Data suppressed for confidentiality concerns if total births to residents, by race, is less than five observations.

**TABLE 2** **SELECTED BIRTH STATISTICS REPORTED BY MOTHER'S RACE:**  
**2000 AND 1998-2000**  
**NOME CENSUS AREA**

	TOTAL				WHITE				NATIVE			
	2000 NUMBER	2000 RATE*	1998-2000 NUMBER	1998-2000 RATE*	2000 NUMBER	2000 RATE*	1998-2000 NUMBER	1998-2000 RATE*	2000 NUMBER	2000 RATE*	1998-2000 NUMBER	1998-2000 RATE*
<b>BIRTH RATES (1)</b>												
CRUDE BIRTH RATE	191	20.8	614	22								
TEEN BIRTH RATE												
15-17	8	28.0 *	34	42.1								
18-19	27	300.0	70	202.3								
15-19	35	93.1	104	90.1								
FERTILITY RATE	191	103.1	614	109.7								

	TOTAL				WHITE				NATIVE			
	2000 NUMBER	2000 %	1998-2000 NUMBER	1998-2000 %	2000 NUMBER	2000 %	1998-2000 NUMBER	1998-2000 %	2000 NUMBER	2000 %	1998-2000 NUMBER	1998-2000 %
<b>BIRTHS</b>												
WITHIN AREA	91	100.0	325	100.0	7	7.7	14	4.3	82	90.1	307	94.5
TO RESIDENTS	191	100.0	614	100.0	28	14.7	77	12.5	161	84.3	529	86.2
<b>FACILITY</b>												
HOSPITAL	184	96.3	590	96.1	24	85.7	64	83.1	158	98.1	519	98.1
BIRTHING CENTER	2	1.0	3	0.5	1	3.6	1	1.3	1	0.6	2	0.4
HOME	1	0.5	4	0.7	1	3.6	2	2.6	0	0.0	2	0.4
OTHER	2	1.0	5	0.8	0	0.0	0	0.0	2	1.2	5	0.9
OUTSIDE ALASKA	2	1.0	12	2.0	2	7.1	10	13.0	0	0.0	1	0.2
<b>MOTHER CHARACTERISTICS</b>												
<b>AGE GROUP</b>												
<15	1	0.5	6	1.0	0	0.0	0	0.0	1	0.6	6	1.1
15-19	35	18.3	104	16.9	1	3.6	4	5.2	34	21.1	99	18.7
20-24	53	27.7	174	28.3	4	14.3	11	14.3	48	29.8	161	30.4
25-29	51	26.7	164	26.7	8	28.6	20	26.0	43	26.7	140	26.5
30-34	31	16.2	99	16.1	7	25.0	26	33.8	23	14.3	72	13.6
35-39	18	9.4	58	9.4	6	21.4	12	15.6	12	7.5	46	8.7
40-44	2	1.0	8	1.3	2	7.1	3	3.9	0	0.0	5	0.9
45+	0	0.0	1	0.2	0	0.0	1	1.3	0	0.0	0	0.0
REPORTED DRINKING	15	7.9	49	8.1	1	3.6	3	4.1	14	8.8	46	8.8
REPORTED SMOKING	90	47.4	303	49.8	3	10.7	7	9.2	86	53.8	295	56.3
UNWED	103	54.2	359	58.7	6	21.4	18	23.4	97	60.6	340	64.5
<b>EDUCATION</b>												
<12 YEARS	46	24.2	136	22.8	2	7.1	4	5.4	44	27.5	131	25.4
12 YEARS	108	56.8	363	60.8	4	14.3	14	18.9	102	63.8	344	66.8
12+ YEARS	36	18.9	98	16.4	22	78.6	56	75.7	14	8.8	40	7.8
<b>PRENATAL CARE</b>												
<b>TRIMESTER CARE BEGAN</b>												
1ST TRIMESTER	162	85.7	438	72.6	26	92.9	69	90.8	134	84.3	363	69.9
3RD TRIMESTER	7	3.7	65	10.8	0	0.0	2	2.6	7	4.4	62	11.9
NO PRENATAL CARE	2	1.1	7	1.2	0	0.0	0	0.0	2	1.3	7	1.3
<b>APNCU INDEX</b>												
ADEQUATE+	40	21.4	118	19.7	3	11.1	18	24.0	37	23.4	100	19.3
ADEQUATE	72	38.5	186	31.0	15	55.6	32	42.7	57	36.1	150	29.0
INTERMEDIATE	51	27.3	142	23.7	8	29.6	20	26.7	41	25.9	120	23.2
INADEQUATE	22	11.8	147	24.5	1	3.7	5	6.7	21	13.3	140	27.1
<b>KESSNER INDEX</b>												
ADEQUATE	128	68.4	321	53.1	21	77.8	56	74.7	106	67.1	262	50.3
INTERMEDIATE	50	26.7	211	34.9	6	22.2	17	22.7	43	27.2	190	36.5
INADEQUATE	7	3.7	65	10.8	0	0.0	2	2.7	7	4.4	62	11.9
<b>C-SECTION BIRTHS</b>	8	4.2	39	6.7	2	7.7	10	13.9	6	3.7	26	5.2
<b>PRE-TERM BIRTHS</b>	24	12.6	84	13.7	2	7.1	8	10.5	22	13.8	74	14.0
<b>LOW BIRTHWEIGHT</b>	7	3.7	28	4.6	1	3.6	3	3.9	6	3.7	23	4.4

Note: Unknown responses are excluded from the denominator when calculating percentages.

(1) Rate per 1,000 population.

\* Rates based on fewer than 10 occurrences are statistically unreliable and should be used with caution.

\*\* Data suppressed for confidentiality concerns if total births to residents, by race, is less than five observations.

**TABLE 2** **SELECTED BIRTH STATISTICS REPORTED BY MOTHER'S RACE:**  
**2000 AND 1998-2000**  
**NORTH SLOPE BOROUGH**

	TOTAL				WHITE				NATIVE			
	2000 NUMBER	2000 RATE*	1998-2000 NUMBER	1998-2000 RATE*	2000 NUMBER	2000 RATE*	1998-2000 NUMBER	1998-2000 RATE*	2000 NUMBER	2000 RATE*	1998-2000 NUMBER	1998-2000 RATE*
<b>BIRTH RATES (1)</b>												
CRUDE BIRTH RATE	158	21.4	446	20.2								
TEEN BIRTH RATE												
15-17	11	48.2	34	56.4								
18-19	16	158.4	41	117.5								
15-19	27	82.1	75	78.8								
FERTILITY RATE	158	99.4	446	96.0								

	TOTAL				WHITE				NATIVE			
	2000 NUMBER	2000 %	1998-2000 NUMBER	1998-2000 %	2000 NUMBER	2000 %	1998-2000 NUMBER	1998-2000 %	2000 NUMBER	2000 %	1998-2000 NUMBER	1998-2000 %
<b>BIRTHS</b>												
WITHIN AREA	36	100.0	138	100.0	0	0.0	3	2.2	33	91.7	119	86.2
TO RESIDENTS	158	100.0	446	100.0	13	8.2	37	8.3	130	82.3	371	83.2
<b>FACILITY</b>												
HOSPITAL	153	96.8	426	95.5	11	84.6	26	70.3	128	98.5	364	98.1
BIRTHING CENTER	0	0.0	0	0.0	0	0.0	0	0.0	0	0.0	0	0.0
HOME	0	0.0	2	0.4	0	0.0	1	2.7	0	0.0	1	0.3
OTHER	3	1.9	7	1.6	0	0.0	0	0.0	2	1.5	6	1.6
OUTSIDE ALASKA	2	1.3	11	2.5	2	15.4	10	27.0	0	0.0	0	0.0
<b>MOTHER CHARACTERISTICS</b>												
AGE GROUP												
<15	0	0.0	2	0.4	0	0.0	0	0.0	0	0.0	2	0.5
15-19	27	17.1	75	16.8	0	0.0	0	0.0	24	18.5	71	19.1
20-24	48	30.4	133	29.8	3	23.1	9	24.3	44	33.8	121	32.6
25-29	36	22.8	104	23.3	4	30.8	11	29.7	24	18.5	78	21.0
30-34	27	17.1	82	18.4	2	15.4	11	29.7	23	17.7	66	17.8
35-39	18	11.4	44	9.9	4	30.8	5	13.5	13	10.0	30	8.1
40-44	2	1.3	6	1.3	0	0.0	1	2.7	2	1.5	3	0.8
45+	0	0.0	0	0.0	0	0.0	0	0.0	0	0.0	0	0.0
REPORTED DRINKING	12	7.7	44	10.1	0	0.0	0	0.0	12	9.4	43	11.7
REPORTED SMOKING	67	42.9	193	43.9	2	16.7	3	8.6	63	48.8	184	50.1
UNWED	86	54.8	251	56.5	0	0.0	2	5.7	80	61.5	236	63.6
EDUCATION												
<12 YEARS	41	27.0	129	30.1	0	0.0	1	2.8	40	32.0	125	35.0
12 YEARS	90	59.2	227	52.9	7	53.8	13	36.1	76	60.8	200	56.0
12+ YEARS	21	13.8	73	17.0	6	46.2	22	61.1	9	7.2	32	9.0
<b>PRENATAL CARE</b>												
TRIMESTER CARE BEGAN												
1ST TRIMESTER	110	71.9	337	76.9	11	84.6	32	88.9	87	68.5	279	76.0
3RD TRIMESTER	17	11.1	31	7.1	1	7.7	1	2.8	16	12.6	25	6.8
NO PRENATAL CARE	2	1.3	3	0.7	0	0.0	0	0.0	2	1.6	3	0.8
APNCU INDEX												
ADEQUATE+	34	22.1	90	20.5	5	41.7	11	31.4	27	20.9	74	20.1
ADEQUATE	47	30.5	128	29.2	4	33.3	15	42.9	38	29.5	105	28.5
INTERMEDIATE	31	20.1	108	24.6	2	16.7	4	11.4	25	19.4	91	24.7
INADEQUATE	40	26.0	110	25.1	1	8.3	5	14.3	37	28.7	96	26.0
KESSNER INDEX												
ADEQUATE	85	54.8	232	52.7	11	84.6	27	75.0	67	51.9	188	50.9
INTERMEDIATE	51	32.9	174	39.5	1	7.7	8	22.2	44	34.1	153	41.5
INADEQUATE	17	11.0	31	7.0	1	7.7	1	2.8	16	12.4	25	6.8
<b>C-SECTION BIRTHS</b>	19	12.4	44	10.1	2	20.0	5	16.1	12	9.4	33	8.9
<b>PRE-TERM BIRTHS</b>	18	11.5	58	13.1	1	7.7	1	2.7	14	10.9	54	14.6
<b>LOW BIRTHWEIGHT</b>	10	6.4	26	5.9	1	7.7	1	2.7	7	5.4	22	6.0

Note: Unknown responses are excluded from the denominator when calculating percentages.  
 (1) Rate per 1,000 population.  
 \* Rates based on fewer than 10 occurrences are statistically unreliable and should be used with caution.  
 \*\* Data suppressed for confidentiality concerns if total births to residents, by race, is less than five observations.

**TABLE 2 SELECTED BIRTH STATISTICS REPORTED BY MOTHER'S RACE:  
2000 AND 1998-2000**

**NORTHWEST ARCTIC BOROUGH**

	TOTAL				WHITE				NATIVE			
	2000 NUMBER	2000 RATE*	1998-2000 NUMBER	1998-2000 RATE*	2000 NUMBER	2000 RATE*	1998-2000 NUMBER	1998-2000 RATE*	2000 NUMBER	2000 RATE*	1998-2000 NUMBER	1998-2000 RATE*
<b>BIRTH RATES (1)</b>												
CRUDE BIRTH RATE	157	21.8	518	24.8								
TEEN BIRTH RATE												
15-17	11	46.4	36	58.5								
18-19	21	250.0	58	187.1								
15-19	32	99.7	94	101.6								
FERTILITY RATE	157	108.1	518	124.6								

	TOTAL				WHITE				NATIVE			
	2000 NUMBER	2000 %	1998-2000 NUMBER	1998-2000 %	2000 NUMBER	2000 %	1998-2000 NUMBER	1998-2000 %	2000 NUMBER	2000 %	1998-2000 NUMBER	1998-2000 %
<b>BIRTHS</b>												
WITHIN AREA	102	100.0	320	100.0	1	1.0	7	2.2	101	99.0	313	97.8
TO RESIDENTS	157	100.0	518	100.0	6	3.8	30	5.8	151	96.2	486	93.8
<b>FACILITY</b>												
HOSPITAL	154	98.1	507	97.9	6	100.0	28	93.3	148	98.0	477	98.1
BIRTHING CENTER	0	0.0	0	0.0	0	0.0	0	0.0	0	0.0	0	0.0
HOME	1	0.6	1	0.2	0	0.0	0	0.0	1	0.7	1	0.2
OTHER	2	1.3	7	1.4	0	0.0	0	0.0	2	1.3	7	1.4
OUTSIDE ALASKA	0	0.0	3	0.6	0	0.0	2	6.7	0	0.0	1	0.2
<b>MOTHER CHARACTERISTICS</b>												
<b>AGE GROUP</b>												
<15	0	0.0	1	0.2	0	0.0	0	0.0	0	0.0	1	0.2
15-19	32	20.4	94	18.1	1	16.7	1	3.3	31	20.5	93	19.1
20-24	44	28.0	144	27.8	0	0.0	3	10.0	44	29.1	141	29.0
25-29	36	22.9	129	24.9	3	50.0	11	36.7	33	21.9	117	24.1
30-34	26	16.6	90	17.4	2	33.3	12	40.0	24	15.9	78	16.0
35-39	14	8.9	40	7.7	0	0.0	1	3.3	14	9.3	38	7.8
40-44	5	3.2	18	3.5	0	0.0	1	3.3	5	3.3	17	3.5
45+	0	0.0	2	0.4	0	0.0	1	3.3	0	0.0	1	0.2
REPORTED DRINKING	17	10.8	79	15.4	0	0.0	0	0.0	17	11.3	79	16.4
REPORTED SMOKING	79	50.3	258	50.1	0	0.0	2	6.9	79	52.3	256	52.9
UNWED	94	61.0	325	63.4	2	33.3	6	21.4	92	62.2	319	66.0
<b>EDUCATION</b>												
<12 YEARS	49	35.0	138	29.2	1	20.0	1	3.4	48	35.6	137	31.1
12 YEARS	82	58.6	269	57.0	0	0.0	4	13.8	82	60.7	265	60.1
12+ YEARS	9	6.4	65	13.8	4	80.0	24	82.8	5	3.7	39	8.8
<b>PRENATAL CARE</b>												
<b>TRIMESTER CARE BEGAN</b>												
1ST TRIMESTER	118	76.6	378	74.6	3	50.0	25	86.2	115	77.7	351	73.7
3RD TRIMESTER	11	7.1	23	4.5	1	16.7	1	3.4	10	6.8	22	4.6
NO PRENATAL CARE	2	1.3	4	0.8	0	0.0	0	0.0	2	1.3	4	0.8
<b>APNCU INDEX</b>												
ADEQUATE+	29	18.8	116	23.0	3	50.0	10	35.7	26	17.6	105	22.1
ADEQUATE	40	26.0	151	29.9	1	16.7	11	39.3	39	26.4	139	29.3
INTERMEDIATE	42	27.3	124	24.6	0	0.0	5	17.9	42	28.4	119	25.1
INADEQUATE	41	26.6	110	21.8	2	33.3	2	7.1	39	26.4	108	22.7
<b>KESSNER INDEX</b>												
ADEQUATE	75	48.4	266	52.6	3	50.0	21	75.0	72	48.3	243	51.1
INTERMEDIATE	67	43.2	213	42.1	2	33.3	6	21.4	65	43.6	207	43.5
INADEQUATE	11	7.1	23	4.5	1	16.7	1	3.6	10	6.7	22	4.6
<b>C-SECTION BIRTHS</b>	8	5.2	27	5.3	2	40.0	6	20.7	6	4.1	21	4.3
<b>PRE-TERM BIRTHS</b>	23	14.6	77	14.9	0	0.0	5	16.7	23	15.2	72	14.8
<b>LOW BIRTHWEIGHT</b>	11	7.1	31	6.0	0	0.0	3	10.0	11	7.3	28	5.8

Note: Unknown responses are excluded from the denominator when calculating percentages.

(1) Rate per 1,000 population.

\* Rates based on fewer than 10 occurrences are statistically unreliable and should be used with caution.

\*\* Data suppressed for confidentiality concerns if total births to residents, by race, is less than five observations.



**TABLE 2 SELECTED BIRTH STATISTICS REPORTED BY MOTHER'S RACE:  
2000 AND 1998-2000**

**PRINCE OF WALES-OUTER KETCHIKAN CENSUS AREA**

	TOTAL				WHITE				NATIVE			
	2000 NUMBER	2000 RATE*	1998-2000 NUMBER	1998-2000 RATE*	2000 NUMBER	2000 RATE*	1998-2000 NUMBER	1998-2000 RATE*	2000 NUMBER	2000 RATE*	1998-2000 NUMBER	1998-2000 RATE*
<b>BIRTH RATES (1)</b>												
CRUDE BIRTH RATE	85	13.8	260	13.3								
TEEN BIRTH RATE												
15-17	3	16.6 *	7	12.8 *								
18-19	3	50.0 *	20	98.0								
15-19	6	24.9 *	27	36.0								
FERTILITY RATE	85	67.8	260	65.6								

	TOTAL				WHITE				NATIVE			
	2000 NUMBER	2000 %	1998-2000 NUMBER	1998-2000 %	2000 NUMBER	2000 %	1998-2000 NUMBER	1998-2000 %	2000 NUMBER	2000 %	1998-2000 NUMBER	1998-2000 %
<b>BIRTHS</b>												
WITHIN AREA	4	100.0	12	100.0	3	75.0	9	75.0	1	25.0	3	25.0
TO RESIDENTS	85	100.0	260	100.0	35	41.2	130	50.0	49	57.6	126	48.5
<b>FACILITY</b>												
HOSPITAL	77	90.6	236	90.8	28	80.0	115	88.5	48	98.0	117	92.9
BIRTHING CENTER	0	0.0	0	0.0	0	0.0	0	0.0	0	0.0	0	0.0
HOME	5	5.9	11	4.2	5	14.3	11	8.5	0	0.0	0	0.0
OTHER	1	1.2	3	1.2	0	0.0	0	0.0	1	2.0	3	2.4
OUTSIDE ALASKA	2	2.4	10	3.8	2	5.7	4	3.1	0	0.0	6	4.8
<b>MOTHER CHARACTERISTICS</b>												
<b>AGE GROUP</b>												
<15	0	0.0	0	0.0	0	0.0	0	0.0	0	0.0	0	0.0
15-19	6	7.1	27	10.4	2	5.7	11	8.5	4	8.2	16	12.7
20-24	34	40.0	86	33.1	10	28.6	36	27.7	23	46.9	49	38.9
25-29	18	21.2	63	24.2	10	28.6	35	26.9	8	16.3	26	20.6
30-34	13	15.3	47	18.1	7	20.0	26	20.0	6	12.2	21	16.7
35-39	11	12.9	29	11.2	5	14.3	17	13.1	6	12.2	11	8.7
40-44	3	3.5	7	2.7	1	2.9	4	3.1	2	4.1	3	2.4
45+	0	0.0	1	0.4	0	0.0	1	0.8	0	0.0	0	0.0
REPORTED DRINKING	4	4.8	12	4.8	1	3.0	3	2.4	3	6.1	9	7.5
REPORTED SMOKING	20	23.8	67	26.0	8	23.5	30	23.4	12	24.5	37	29.4
UNWED	38	44.7	110	42.3	12	34.3	35	26.9	26	53.1	73	57.9
<b>EDUCATION</b>												
<12 YEARS	10	12.0	35	14.0	6	17.6	17	13.4	4	8.3	18	15.1
12 YEARS	46	55.4	137	54.8	15	44.1	59	46.5	30	62.5	75	63.0
12+ YEARS	27	32.5	78	31.2	13	38.2	51	40.2	14	29.2	26	21.8
<b>PRENATAL CARE</b>												
<b>TRIMESTER CARE BEGAN</b>												
1ST TRIMESTER	57	73.1	173	74.6	19	63.3	84	72.4	37	78.7	85	75.9
3RD TRIMESTER	1	1.3	2	0.9	0	0.0	1	0.9	1	2.1	1	0.9
NO PRENATAL CARE	2	2.7	5	2.2	2	6.9	5	4.3	0	0.0	0	0.0
<b>APNCU INDEX</b>												
ADEQUATE+	17	22.7	38	16.9	3	10.3	10	8.7	14	31.1	28	26.4
ADEQUATE	25	33.3	93	41.3	12	41.4	45	39.1	13	28.9	48	45.3
INTERMEDIATE	23	30.7	73	32.4	7	24.1	43	37.4	15	33.3	26	24.5
INADEQUATE	8	10.7	16	7.1	5	17.2	12	10.4	3	6.7	4	3.8
<b>KESSNER INDEX</b>												
ADEQUATE	45	60.0	131	58.2	14	48.3	61	53.0	30	66.7	68	64.2
INTERMEDIATE	27	36.0	87	38.7	13	44.8	48	41.7	14	31.1	37	34.9
INADEQUATE	1	1.3	2	0.9	0	0.0	1	0.9	1	2.2	1	0.9
<b>C-SECTION BIRTHS</b>	12	14.1	30	11.6	4	11.4	12	9.2	7	14.3	17	13.6
<b>PRE-TERM BIRTHS</b>	12	14.1	18	7.1	2	5.7	3	2.3	10	20.4	14	11.7
<b>LOW BIRTHWEIGHT</b>	4	4.7	13	5.0	2	5.7	5	3.9	2	4.1	7	5.6

Note: Unknown responses are excluded from the denominator when calculating percentages.

(1) Rate per 1,000 population.

\* Rates based on fewer than 10 occurrences are statistically unreliable and should be used with caution.

\*\* Data suppressed for confidentiality concerns if total births to residents, by race, is less than five observations.

**TABLE 2** **SELECTED BIRTH STATISTICS REPORTED BY MOTHER'S RACE:**  
**2000 AND 1998-2000**  
**SITKA BOROUGH**

	TOTAL				WHITE				NATIVE			
	2000 NUMBER	2000 RATE*	1998-2000 NUMBER	1998-2000 RATE*	2000 NUMBER	2000 RATE*	1998-2000 NUMBER	1998-2000 RATE*	2000 NUMBER	2000 RATE*	1998-2000 NUMBER	1998-2000 RATE*
<b>BIRTH RATES (1)</b>												
CRUDE BIRTH RATE	130	14.7	356	13.6								
TEEN BIRTH RATE												
15-17	1	4.7 *	7	12.0 *								
18-19	10	103.1	18	53.4								
15-19	11	35.3	25	27.2								
FERTILITY RATE	130	67.2	356	63.3								

	TOTAL				WHITE				NATIVE			
	2000 NUMBER	2000 %	1998-2000 NUMBER	1998-2000 %	2000 NUMBER	2000 %	1998-2000 NUMBER	1998-2000 %	2000 NUMBER	2000 %	1998-2000 NUMBER	1998-2000 %
<b>BIRTHS</b>												
WITHIN AREA	137	100.0	396	100.0	80	58.4	239	60.4	45	32.8	134	33.8
TO RESIDENTS	130	100.0	356	100.0	83	63.8	243	68.3	37	28.5	93	26.1
<b>FACILITY</b>												
HOSPITAL	123	94.6	328	92.1	77	92.8	216	88.9	37	100.0	93	100.0
BIRTHING CENTER	0	0.0	0	0.0	0	0.0	0	0.0	0	0.0	0	0.0
HOME	2	1.5	10	2.8	2	2.4	10	4.1	0	0.0	0	0.0
OTHER	0	0.0	0	0.0	0	0.0	0	0.0	0	0.0	0	0.0
OUTSIDE ALASKA	5	3.8	18	5.1	4	4.8	17	7.0	0	0.0	0	0.0
<b>MOTHER CHARACTERISTICS</b>												
<b>AGE GROUP</b>												
<15	0	0.0	0	0.0	0	0.0	0	0.0	0	0.0	0	0.0
15-19	11	8.5	25	7.0	6	7.2	11	4.5	4	10.8	11	11.8
20-24	31	23.8	89	25.0	17	20.5	50	20.6	11	29.7	33	35.5
25-29	39	30.0	93	26.1	26	31.3	71	29.2	10	27.0	19	20.4
30-34	29	22.3	86	24.2	20	24.1	66	27.2	8	21.6	16	17.2
35-39	17	13.1	54	15.2	12	14.5	39	16.0	4	10.8	12	12.9
40-44	3	2.3	9	2.5	2	2.4	6	2.5	0	0.0	2	2.2
45+	0	0.0	0	0.0	0	0.0	0	0.0	0	0.0	0	0.0
REPORTED DRINKING	3	2.4	7	2.1	1	1.3	2	0.9	2	5.4	5	5.4
REPORTED SMOKING	22	16.9	56	15.7	10	12.0	28	11.5	11	29.7	26	28.0
UNWED	45	34.6	108	30.4	22	26.5	57	23.6	22	59.5	49	52.7
<b>EDUCATION</b>												
<12 YEARS	13	10.1	39	11.5	7	8.4	18	7.9	5	13.9	19	20.9
12 YEARS	40	31.0	115	33.8	19	22.9	60	26.2	17	47.2	46	50.5
12+ YEARS	76	58.9	186	54.7	57	68.7	151	65.9	14	38.9	26	28.6
<b>PRENATAL CARE</b>												
<b>TRIMESTER CARE BEGAN</b>												
1ST TRIMESTER	107	85.6	286	82.9	71	89.9	203	87.1	28	77.8	68	73.9
3RD TRIMESTER	5	4.0	13	3.8	3	3.8	5	2.1	1	2.8	7	7.6
NO PRENATAL CARE	0	0.0	0	0.0	0	0.0	0	0.0	0	0.0	0	0.0
<b>APNCU INDEX</b>												
ADEQUATE+	43	34.4	97	28.1	25	31.6	57	24.5	17	47.2	39	42.4
ADEQUATE	44	35.2	131	38.0	29	36.7	97	41.6	11	30.6	24	26.1
INTERMEDIATE	21	16.8	71	20.6	17	21.5	59	25.3	1	2.8	7	7.6
INADEQUATE	17	13.6	46	13.3	8	10.1	20	8.6	7	19.4	22	23.9
<b>KESSNER INDEX</b>												
ADEQUATE	102	81.6	254	73.6	69	87.3	181	77.7	28	77.8	63	68.5
INTERMEDIATE	18	14.4	78	22.6	7	8.9	47	20.2	7	19.4	22	23.9
INADEQUATE	5	4.0	13	3.8	3	3.8	5	2.1	1	2.8	7	7.6
<b>C-SECTION BIRTHS</b>	28	21.5	88	24.9	21	25.3	67	27.8	5	13.5	18	19.4
<b>PRE-TERM BIRTHS</b>	10	7.7	30	8.5	7	8.4	17	7.1	2	5.4	12	12.9
<b>LOW BIRTHWEIGHT</b>	3	2.3	15	4.3	3	3.7	8	3.4	0	0.0	7	7.5

Note: Unknown responses are excluded from the denominator when calculating percentages.

(1) Rate per 1,000 population.

\* Rates based on fewer than 10 occurrences are statistically unreliable and should be used with caution.

\*\* Data suppressed for confidentiality concerns if total births to residents, by race, is less than five observations.

**TABLE 2** **SELECTED BIRTH STATISTICS REPORTED BY MOTHER'S RACE:**  
**2000 AND 1998-2000**  
**SKAGWAY-HOONAH-ANGOON CENSUS AREA**

	TOTAL				WHITE				NATIVE			
	2000 NUMBER	2000 RATE*	1998-2000 NUMBER	1998-2000 RATE*	2000 NUMBER	2000 RATE*	1998-2000 NUMBER	1998-2000 RATE*	2000 NUMBER	2000 RATE*	1998-2000 NUMBER	1998-2000 RATE*
<b>BIRTH RATES (1)</b>												
CRUDE BIRTH RATE	26	7.6	88	8.3								
TEEN BIRTH RATE												
15-17	1	11.1 *	2	6.6 *								
18-19	2	58.8 *	6	63.2 *								
15-19	3	24.2 *	8	20.0 *								
FERTILITY RATE	26	39.3	88	42.0								

	TOTAL				WHITE				NATIVE			
	2000 NUMBER	2000 %	1998-2000 NUMBER	1998-2000 %	2000 NUMBER	2000 %	1998-2000 NUMBER	1998-2000 %	2000 NUMBER	2000 %	1998-2000 NUMBER	1998-2000 %
<b>BIRTHS</b>												
WITHIN AREA	1	100.0	4	100.0	0	0.0	1	25.0	1	100.0	3	75.0
TO RESIDENTS	26	100.0	88	100.0	8	30.8	40	45.5	14	53.8	42	47.7
<b>FACILITY</b>												
HOSPITAL	16	61.5	63	71.6	3	37.5	24	60.0	13	92.9	39	92.9
BIRTHING CENTER	3	11.5	11	12.5	3	37.5	11	27.5	0	0.0	0	0.0
HOME	0	0.0	1	1.1	0	0.0	1	2.5	0	0.0	0	0.0
OTHER	1	3.8	3	3.4	0	0.0	0	0.0	1	7.1	3	7.1
OUTSIDE ALASKA	6	23.1	10	11.4	2	25.0	4	10.0	0	0.0	0	0.0
<b>MOTHER CHARACTERISTICS</b>												
<b>AGE GROUP</b>												
<15	0	0.0	1	1.1	0	0.0	0	0.0	0	0.0	1	2.4
15-19	3	11.5	8	9.1	1	12.5	4	10.0	2	14.3	4	9.5
20-24	5	19.2	24	27.3	2	25.0	9	22.5	3	21.4	15	35.7
25-29	7	26.9	28	31.8	1	12.5	14	35.0	4	28.6	10	23.8
30-34	3	11.5	9	10.2	2	25.0	6	15.0	1	7.1	3	7.1
35-39	6	23.1	13	14.8	1	12.5	5	12.5	4	28.6	7	16.7
40-44	2	7.7	5	5.7	1	12.5	2	5.0	0	0.0	2	4.8
45+	0	0.0	0	0.0	0	0.0	0	0.0	0	0.0	0	0.0
REPORTED DRINKING	1	5.0	4	5.2	0	0.0	0	0.0	1	7.1	4	9.5
REPORTED SMOKING	3	13.6	16	19.8	1	12.5	6	15.4	2	14.3	10	23.8
UNWED	9	40.9	32	39.0	2	25.0	9	22.5	7	50.0	23	54.8
<b>EDUCATION</b>												
<12 YEARS	5	23.8	15	18.8	2	25.0	4	10.3	3	23.1	11	26.8
12 YEARS	8	38.1	32	40.0	1	12.5	11	28.2	7	53.8	21	51.2
12+ YEARS	8	38.1	33	41.3	5	62.5	24	61.5	3	23.1	9	22.0
<b>PRENATAL CARE</b>												
<b>TRIMESTER CARE BEGAN</b>												
1ST TRIMESTER	16	76.2	66	83.5	5	62.5	34	85.0	11	84.6	32	82.1
3RD TRIMESTER	0	0.0	1	1.3	0	0.0	1	2.5	0	0.0	0	0.0
NO PRENATAL CARE	1	4.8	1	1.3	0	0.0	0	0.0	1	7.7	1	2.6
<b>APNCU INDEX</b>												
ADEQUATE+	2	9.5	10	13.2	1	12.5	6	15.8	1	7.7	4	10.5
ADEQUATE	7	33.3	25	32.9	6	75.0	17	44.7	1	7.7	8	21.1
INTERMEDIATE	8	38.1	32	42.1	1	12.5	12	31.6	7	53.8	20	52.6
INADEQUATE	3	14.3	8	10.5	0	0.0	3	7.9	3	23.1	5	13.2
<b>KESSNER INDEX</b>												
ADEQUATE	8	38.1	45	59.2	4	50.0	28	73.7	4	30.8	17	44.7
INTERMEDIATE	12	57.1	29	38.2	4	50.0	9	23.7	8	61.5	20	52.6
INADEQUATE	0	0.0	1	1.3	0	0.0	1	2.6	0	0.0	0	0.0
<b>C-SECTION BIRTHS</b>	5	22.7	12	14.6	1	12.5	6	15.0	4	28.6	6	14.3
<b>PRE-TERM BIRTHS</b>	5	22.7	5	6.1	2	25.0	2	5.0	3	21.4	3	7.1
<b>LOW BIRTHWEIGHT</b>	1	4.5	1	1.2	1	12.5	1	2.5	0	0.0	0	0.0

Note: Unknown responses are excluded from the denominator when calculating percentages.  
 (1) Rate per 1,000 population.  
 \* Rates based on fewer than 10 occurrences are statistically unreliable and should be used with caution.  
 \*\* Data suppressed for confidentiality concerns if total births to residents, by race, is less than five observations.

**TABLE 2 SELECTED BIRTH STATISTICS REPORTED BY MOTHER'S RACE:  
2000 AND 1998-2000**

**SOUTHEAST FAIRBANKS CENSUS AREA**

	TOTAL				WHITE				NATIVE			
	2000 NUMBER	2000 RATE*	1998-2000 NUMBER	1998-2000 RATE*	2000 NUMBER	2000 RATE*	1998-2000 NUMBER	1998-2000 RATE*	2000 NUMBER	2000 RATE*	1998-2000 NUMBER	1998-2000 RATE*
<b>BIRTH RATES (1)</b>												
CRUDE BIRTH RATE	93	15.1	290	15.4								
TEEN BIRTH RATE												
15-17	2	11.8 *	4	7.5 *								
18-19	4	51.9 *	17	66.9								
15-19	6	24.3 *	21	26.6								
FERTILITY RATE	93	74.8	290	75.4								

	TOTAL				WHITE				NATIVE			
	2000 NUMBER	2000 %	1998-2000 NUMBER	1998-2000 %	2000 NUMBER	2000 %	1998-2000 NUMBER	1998-2000 %	2000 NUMBER	2000 %	1998-2000 NUMBER	1998-2000 %
<b>BIRTHS</b>												
WITHIN AREA	5	100.0	23	100.0	5	100.0	22	95.7	0	0.0	0	0.0
TO RESIDENTS	93	100.0	290	100.0	74	79.6	230	79.3	12	12.9	38	13.1
<b>FACILITY</b>												
HOSPITAL	79	84.9	248	85.5	61	82.4	191	83.0	11	91.7	36	94.7
BIRTHING CENTER	8	8.6	18	6.2	7	9.5	16	7.0	1	8.3	2	5.3
HOME	3	3.2	17	5.9	3	4.1	16	7.0	0	0.0	0	0.0
OTHER	2	2.2	4	1.4	2	2.7	4	1.7	0	0.0	0	0.0
OUTSIDE ALASKA	1	1.1	3	1.0	1	1.4	3	1.3	0	0.0	0	0.0
<b>MOTHER CHARACTERISTICS</b>												
<b>AGE GROUP</b>												
<15	0	0.0	0	0.0	0	0.0	0	0.0	0	0.0	0	0.0
15-19	6	6.5	21	7.3	2	2.7	12	5.2	3	25.0	8	21.1
20-24	28	30.1	83	28.7	22	29.7	61	26.6	4	33.3	14	36.8
25-29	25	26.9	73	25.3	21	28.4	63	27.5	3	25.0	6	15.8
30-34	21	22.6	64	22.1	19	25.7	52	22.7	0	0.0	5	13.2
35-39	12	12.9	36	12.5	9	12.2	31	13.5	2	16.7	4	10.5
40-44	1	1.1	11	3.8	1	1.4	9	3.9	0	0.0	1	2.6
45+	0	0.0	1	0.3	0	0.0	1	0.4	0	0.0	0	0.0
REPORTED DRINKING	1	1.1	3	1.0	0	0.0	1	0.4	0	0.0	1	2.6
REPORTED SMOKING	16	17.2	37	12.8	9	12.2	24	10.5	6	50.0	12	31.6
UNWED	25	26.9	63	21.8	14	18.9	32	14.0	9	75.0	29	76.3
<b>EDUCATION</b>												
<12 YEARS	12	13.3	37	13.0	10	13.7	27	11.9	2	16.7	10	26.3
12 YEARS	46	51.1	142	49.8	36	49.3	108	47.6	10	83.3	25	65.8
12+ YEARS	32	35.6	106	37.2	27	37.0	92	40.5	0	0.0	3	7.9
<b>PRENATAL CARE</b>												
<b>TRIMESTER CARE BEGAN</b>												
1ST TRIMESTER	54	58.1	164	57.3	43	58.1	131	57.7	7	58.3	18	48.6
3RD TRIMESTER	7	7.5	30	10.5	6	8.1	24	10.6	1	8.3	5	13.5
NO PRENATAL CARE	0	0.0	0	0.0	0	0.0	0	0.0	0	0.0	0	0.0
<b>APNCU INDEX</b>												
ADEQUATE+	11	12.0	31	10.9	8	11.0	26	11.5	2	16.7	2	5.6
ADEQUATE	25	27.2	75	26.4	20	27.4	58	25.7	3	25.0	7	19.4
INTERMEDIATE	22	23.9	65	22.9	16	21.9	51	22.6	3	25.0	11	30.6
INADEQUATE	34	37.0	113	39.8	29	39.7	91	40.3	4	33.3	16	44.4
<b>KESSNER INDEX</b>												
ADEQUATE	36	39.1	103	36.3	29	39.7	83	36.7	5	41.7	10	27.8
INTERMEDIATE	49	53.3	151	53.2	38	52.1	119	52.7	6	50.0	21	58.3
INADEQUATE	7	7.6	30	10.6	6	8.2	24	10.6	1	8.3	5	13.9
<b>C-SECTION BIRTHS</b>	16	17.8	45	15.7	13	18.1	34	15.0	2	16.7	8	21.1
<b>PRE-TERM BIRTHS</b>	7	7.5	16	5.5	4	5.4	12	5.2	3	25.0	3	7.9
<b>LOW BIRTHWEIGHT</b>	4	4.3	13	4.5	4	5.4	11	4.8	0	0.0	1	2.6

Note: Unknown responses are excluded from the denominator when calculating percentages.

(1) Rate per 1,000 population.

\* Rates based on fewer than 10 occurrences are statistically unreliable and should be used with caution.

\*\* Data suppressed for confidentiality concerns if total births to residents, by race, is less than five observations.

**TABLE 2** **SELECTED BIRTH STATISTICS REPORTED BY MOTHER'S RACE:**  
**2000 AND 1998-2000**  
**VALDEZ-CORDOVA CENSUS AREA**

	TOTAL				WHITE				NATIVE			
	2000 NUMBER	2000 RATE*	1998-2000 NUMBER	1998-2000 RATE*	2000 NUMBER	2000 RATE*	1998-2000 NUMBER	1998-2000 RATE*	2000 NUMBER	2000 RATE*	1998-2000 NUMBER	1998-2000 RATE*
<b>BIRTH RATES (1)</b>												
CRUDE BIRTH RATE	116	11.4	380	12.3								
TEEN BIRTH RATE												
15-17	3	11.4 *	11	14.8								
18-19	11	97.3	39	90.5								
15-19	14	37.1	50	42.7								
FERTILITY RATE	116	54.8	380	58.9								

	TOTAL				WHITE				NATIVE			
	2000 NUMBER	2000 %	1998-2000 NUMBER	1998-2000 %	2000 NUMBER	2000 %	1998-2000 NUMBER	1998-2000 %	2000 NUMBER	2000 %	1998-2000 NUMBER	1998-2000 %
<b>BIRTHS</b>												
WITHIN AREA	35	100.0	131	100.0	27	77.1	112	85.5	6	17.1	11	8.4
TO RESIDENTS	116	100.0	380	100.0	79	68.1	283	74.5	28	24.1	76	20.0
<b>FACILITY</b>												
HOSPITAL	101	87.1	336	88.4	66	83.5	246	86.9	28	100.0	72	94.7
BIRTHING CENTER	5	4.3	16	4.2	4	5.1	13	4.6	0	0.0	2	2.6
HOME	4	3.4	11	2.9	4	5.1	10	3.5	0	0.0	1	1.3
OTHER	0	0.0	2	0.5	0	0.0	1	0.4	0	0.0	1	1.3
OUTSIDE ALASKA	6	5.2	15	3.9	5	6.3	13	4.6	0	0.0	0	0.0
<b>MOTHER CHARACTERISTICS</b>												
<b>AGE GROUP</b>												
<15	0	0.0	1	0.3	0	0.0	0	0.0	0	0.0	1	1.3
15-19	14	12.1	50	13.2	6	7.6	29	10.2	8	28.6	19	25.0
20-24	27	23.3	88	23.2	19	24.1	65	23.0	6	21.4	17	22.4
25-29	31	26.7	100	26.3	24	30.4	75	26.5	5	17.9	21	27.6
30-34	30	25.9	89	23.4	19	24.1	68	24.0	6	21.4	13	17.1
35-39	10	8.6	40	10.5	7	8.9	34	12.0	3	10.7	5	6.6
40-44	4	3.4	12	3.2	4	5.1	12	4.2	0	0.0	0	0.0
45+	0	0.0	0	0.0	0	0.0	0	0.0	0	0.0	0	0.0
REPORTED DRINKING	5	4.5	12	3.3	4	5.3	9	3.3	1	3.6	3	4.0
REPORTED SMOKING	21	18.8	72	19.4	11	14.5	44	15.9	10	35.7	27	36.0
UNWED	33	28.9	112	29.7	18	23.1	66	23.5	14	50.0	41	53.9
<b>EDUCATION</b>												
<12 YEARS	8	7.1	36	9.8	3	3.9	16	5.8	5	18.5	18	25.0
12 YEARS	50	44.6	139	37.9	32	41.6	97	35.0	13	48.1	33	45.8
12+ YEARS	54	48.2	192	52.3	42	54.5	164	59.2	9	33.3	21	29.2
<b>PRENATAL CARE</b>												
<b>TRIMESTER CARE BEGAN</b>												
1ST TRIMESTER	92	82.1	297	81.6	66	85.7	228	83.8	19	70.4	52	71.2
3RD TRIMESTER	4	3.6	13	3.6	1	1.3	9	3.3	2	7.4	3	4.1
NO PRENATAL CARE	0	0.0	3	0.8	0	0.0	2	0.7	0	0.0	1	1.4
<b>APNCU INDEX</b>												
ADEQUATE+	21	19.8	86	24.0	13	17.8	66	24.5	6	22.2	16	22.2
ADEQUATE	42	39.6	133	37.2	31	42.5	100	37.2	9	33.3	26	36.1
INTERMEDIATE	21	19.8	73	20.4	16	21.9	57	21.2	4	14.8	11	15.3
INADEQUATE	22	20.8	63	17.6	13	17.8	44	16.4	8	29.6	18	25.0
<b>KESSNER INDEX</b>												
ADEQUATE	62	57.9	223	62.1	45	61.6	175	65.1	13	48.1	37	51.4
INTERMEDIATE	41	38.3	120	33.4	27	37.0	83	30.9	12	44.4	31	43.1
INADEQUATE	4	3.7	13	3.6	1	1.4	9	3.3	2	7.4	3	4.2
<b>C-SECTION BIRTHS</b>	18	15.7	56	15.1	15	19.0	50	18.1	2	7.1	4	5.3
<b>PRE-TERM BIRTHS</b>	8	7.1	34	9.1	6	7.7	25	9.0	1	3.7	6	8.0
<b>LOW BIRTHWEIGHT</b>	4	3.5	25	6.6	3	3.8	21	7.4	0	0.0	2	2.6

Note: Unknown responses are excluded from the denominator when calculating percentages.  
 (1) Rate per 1,000 population.  
 \* Rates based on fewer than 10 occurrences are statistically unreliable and should be used with caution.  
 \*\* Data suppressed for confidentiality concerns if total births to residents, by race, is less than five observations.

**TABLE 2 SELECTED BIRTH STATISTICS REPORTED BY MOTHER'S RACE:  
2000 AND 1998-2000**

**WADE HAMPTON CENSUS AREA**

	TOTAL				WHITE				NATIVE			
	2000 NUMBER	2000 RATE*	1998-2000 NUMBER	1998-2000 RATE*	2000 NUMBER	2000 RATE*	1998-2000 NUMBER	1998-2000 RATE*	2000 NUMBER	2000 RATE*	1998-2000 NUMBER	1998-2000 RATE*
<b>BIRTH RATES (1)</b>												
CRUDE BIRTH RATE	213	30.3	644	30.5								
TEEN BIRTH RATE												
15-17	23	89.1	47	70.5								
18-19	20	289.9	57	208.8								
15-19	43	131.5	104	110.6								
FERTILITY RATE	213	150.8	644	159.3								

	TOTAL				WHITE				NATIVE			
	2000 NUMBER	2000 %	1998-2000 NUMBER	1998-2000 %	2000 NUMBER	2000 %	1998-2000 NUMBER	1998-2000 %	2000 NUMBER	2000 %	1998-2000 NUMBER	1998-2000 %
<b>BIRTHS</b>												
WITHIN AREA	5	100.0	23	100.0	0	0.0	0	0.0	5	100.0	23	100.0
TO RESIDENTS	213	100.0	644	100.0	1	0.5	9	1.4	212	99.5	634	98.4
<b>FACILITY</b>												
HOSPITAL	209	98.1	622	96.6	1	100.0	6	66.7	208	98.1	615	97.0
BIRTHING CENTER	0	0.0	0	0.0	0	0.0	0	0.0	0	0.0	0	0.0
HOME	0	0.0	0	0.0	0	0.0	0	0.0	0	0.0	0	0.0
OTHER	3	1.4	18	2.8	0	0.0	0	0.0	3	1.4	18	2.8
OUTSIDE ALASKA	1	0.5	4	0.6	0	0.0	3	33.3	1	0.5	1	0.2
<b>MOTHER CHARACTERISTICS</b>												
<b>AGE GROUP</b>												
<15	0	0.0	0	0.0	**	**	0	0.0	**	**	0	0.0
15-19	43	20.2	104	16.1	**	**	0	0.0	**	**	104	16.4
20-24	56	26.3	159	24.7	**	**	1	11.1	**	**	158	24.9
25-29	50	23.5	178	27.6	**	**	3	33.3	**	**	174	27.4
30-34	35	16.4	124	19.3	**	**	3	33.3	**	**	121	19.1
35-39	26	12.2	68	10.6	**	**	2	22.2	**	**	66	10.4
40-44	2	0.9	10	1.6	**	**	0	0.0	**	**	10	1.6
45+	1	0.5	1	0.2	**	**	0	0.0	**	**	1	0.2
REPORTED DRINKING	15	7.1	50	7.8	**	**	0	0.0	**	**	50	7.9
REPORTED SMOKING	65	30.5	145	22.6	**	**	0	0.0	**	**	145	22.9
UNWED	131	61.8	366	56.9	**	**	0	0.0	**	**	365	57.7
<b>EDUCATION</b>												
<12 YEARS	61	29.9	165	26.3	**	**	0	0.0	**	**	165	26.7
12 YEARS	126	61.8	400	63.8	**	**	1	12.5	**	**	398	64.4
12+ YEARS	17	8.3	62	9.9	**	**	7	87.5	**	**	55	8.9
<b>PRENATAL CARE</b>												
<b>TRIMESTER CARE BEGAN</b>												
1ST TRIMESTER	105	50.2	407	64.4	**	**	7	77.8	**	**	399	64.1
3RD TRIMESTER	34	16.3	65	10.3	**	**	0	0.0	**	**	65	10.5
NO PRENATAL CARE	3	1.4	7	1.1	**	**	0	0.0	**	**	7	1.1
<b>APNCU INDEX</b>												
ADEQUATE+	11	5.3	37	5.9	**	**	1	11.1	**	**	36	5.8
ADEQUATE	33	15.8	109	17.4	**	**	3	33.3	**	**	106	17.2
INTERMEDIATE	56	26.8	199	31.7	**	**	2	22.2	**	**	197	31.9
INADEQUATE	106	50.7	276	43.9	**	**	3	33.3	**	**	272	44.0
<b>KESSNER INDEX</b>												
ADEQUATE	40	19.1	150	23.9	**	**	5	55.6	**	**	145	23.5
INTERMEDIATE	132	63.2	406	64.6	**	**	4	44.4	**	**	401	64.9
INADEQUATE	34	16.3	65	10.4	**	**	0	0.0	**	**	65	10.5
<b>C-SECTION BIRTHS</b>	11	5.2	40	6.2	**	**	2	22.2	**	**	38	6.0
<b>PRE-TERM BIRTHS</b>	22	10.3	82	12.7	**	**	0	0.0	**	**	82	12.9
<b>LOW BIRTHWEIGHT</b>	10	4.7	32	5.0	**	**	0	0.0	**	**	32	5.1

Note: Unknown responses are excluded from the denominator when calculating percentages.

(1) Rate per 1,000 population.

\* Rates based on fewer than 10 occurrences are statistically unreliable and should be used with caution.

\*\* Data suppressed for confidentiality concerns if total births to residents, by race, is less than five observations.

**TABLE 2 SELECTED BIRTH STATISTICS REPORTED BY MOTHER'S RACE:  
2000 AND 1998-2000**

**WRANGELL-PETERSBURG CENSUS AREA**

	TOTAL				WHITE				NATIVE			
	2000 NUMBER	2000 RATE*	1998-2000 NUMBER	1998-2000 RATE*	2000 NUMBER	2000 RATE*	1998-2000 NUMBER	1998-2000 RATE*	2000 NUMBER	2000 RATE*	1998-2000 NUMBER	1998-2000 RATE*
<b>BIRTH RATES (1)</b>												
CRUDE BIRTH RATE	84	12.6	254	12.1								
TEEN BIRTH RATE												
15-17	2	12.0 *	5	9.3 *								
18-19	6	109.1 *	14	77.8								
15-19	8	36.2 *	19	26.5								
FERTILITY RATE	84	64.0	254	61.4								
	2000 NUMBER	2000 %	1998-2000 NUMBER	1998-2000 %	2000 NUMBER	2000 %	1998-2000 NUMBER	1998-2000 %	2000 NUMBER	2000 %	1998-2000 NUMBER	1998-2000 %
<b>BIRTHS</b>												
WITHIN AREA	39	100.0	103	100.0	26	66.7	75	72.8	13	33.3	24	23.3
TO RESIDENTS	84	100.0	254	100.0	53	63.1	179	70.5	28	33.3	63	24.8
<b>FACILITY</b>												
HOSPITAL	81	96.4	228	89.8	50	94.3	158	88.3	28	100.0	61	96.8
BIRTHING CENTER	0	0.0	3	1.2	0	0.0	3	1.7	0	0.0	0	0.0
HOME	0	0.0	0	0.0	0	0.0	0	0.0	0	0.0	0	0.0
OTHER	0	0.0	1	0.4	0	0.0	0	0.0	0	0.0	1	1.6
OUTSIDE ALASKA	3	3.6	22	8.7	3	5.7	18	10.1	0	0.0	1	1.6
<b>MOTHER CHARACTERISTICS</b>												
<b>AGE GROUP</b>												
<15	0	0.0	0	0.0	0	0.0	0	0.0	0	0.0	0	0.0
15-19	8	9.5	19	7.5	5	9.4	12	6.7	3	10.7	7	11.1
20-24	19	22.6	52	20.5	12	22.6	35	19.6	6	21.4	16	25.4
25-29	27	32.1	99	39.0	16	30.2	74	41.3	11	39.3	22	34.9
30-34	17	20.2	46	18.1	12	22.6	32	17.9	4	14.3	12	19.0
35-39	8	9.5	30	11.8	4	7.5	21	11.7	3	10.7	5	7.9
40-44	4	4.8	7	2.8	3	5.7	4	2.2	1	3.6	1	1.6
45+	1	1.2	1	0.4	1	1.9	1	0.6	0	0.0	0	0.0
REPORTED DRINKING	3	3.6	9	3.8	2	3.8	7	4.3	1	3.6	2	3.2
REPORTED SMOKING	18	21.4	43	17.3	6	11.3	24	13.6	10	35.7	17	27.0
UNWED	23	27.4	66	26.2	11	20.8	32	18.0	11	39.3	31	49.2
<b>EDUCATION</b>												
<12 YEARS	13	15.9	30	12.9	6	11.5	14	8.7	7	25.0	15	24.2
12 YEARS	34	41.5	97	41.8	19	36.5	66	41.0	14	50.0	30	48.4
12+ YEARS	35	42.7	105	45.3	27	51.9	81	50.3	7	25.0	17	27.4
<b>PRENATAL CARE</b>												
<b>TRIMESTER CARE BEGAN</b>												
1ST TRIMESTER	67	80.7	203	82.9	46	86.8	148	85.1	19	70.4	48	78.7
3RD TRIMESTER	1	1.2	6	2.4	0	0.0	3	1.7	1	3.7	3	4.9
NO PRENATAL CARE	0	0.0	0	0.0	0	0.0	0	0.0	0	0.0	0	0.0
<b>APNCU INDEX</b>												
ADEQUATE+	20	24.1	51	20.8	12	22.6	35	20.1	7	25.9	14	23.0
ADEQUATE	40	48.2	115	46.9	31	58.5	93	53.4	8	29.6	20	32.8
INTERMEDIATE	15	18.1	46	18.8	9	17.0	29	16.7	6	22.2	12	19.7
INADEQUATE	8	9.6	33	13.5	1	1.9	17	9.8	6	22.2	15	24.6
<b>KESSNER INDEX</b>												
ADEQUATE	62	74.7	172	70.2	42	79.2	126	72.4	18	66.7	40	65.6
INTERMEDIATE	20	24.1	67	27.3	11	20.8	45	25.9	8	29.6	18	29.5
INADEQUATE	1	1.2	6	2.4	0	0.0	3	1.7	1	3.7	3	4.9
<b>C-SECTION BIRTHS</b>	15	17.9	41	16.3	8	15.1	26	14.6	5	17.9	10	15.9
<b>PRE-TERM BIRTHS</b>	4	4.8	13	5.2	1	1.9	5	2.9	3	10.7	8	12.7
<b>LOW BIRTHWEIGHT</b>	1	1.2	3	1.2	1	1.9	3	1.7	0	0.0	0	0.0

Note: Unknown responses are excluded from the denominator when calculating percentages.

(1) Rate per 1,000 population.

\* Rates based on fewer than 10 occurrences are statistically unreliable and should be used with caution.

\*\* Data suppressed for confidentiality concerns if total births to residents, by race, is less than five observations.

**TABLE 2** **SELECTED BIRTH STATISTICS REPORTED BY MOTHER'S RACE:**  
**2000 AND 1998-2000**  
**YAKUTAT BOROUGH**

	TOTAL				WHITE				NATIVE			
	2000 NUMBER	2000 RATE*	1998-2000 NUMBER	1998-2000 RATE*	2000 NUMBER	2000 RATE*	1998-2000 NUMBER	1998-2000 RATE*	2000 NUMBER	2000 RATE*	1998-2000 NUMBER	1998-2000 RATE*
<b>BIRTH RATES (1)</b>												
CRUDE BIRTH RATE	8	9.9 *	18	7.8								
TEEN BIRTH RATE												
15-17	0	0.0	0	0.0								
18-19	1	250.0 *	1	43.5 *								
15-19	1	43.5 *	1	13.9 *								
FERTILITY RATE	8	56.3 *	18	42.1								

	TOTAL				WHITE				NATIVE			
	2000 NUMBER	2000 %	1998-2000 NUMBER	1998-2000 %	2000 NUMBER	2000 %	1998-2000 NUMBER	1998-2000 %	2000 NUMBER	2000 %	1998-2000 NUMBER	1998-2000 %
<b>BIRTHS</b>												
WITHIN AREA	0	0.0	0	0.0	0	0.0	0	0.0	0	0.0	0	0.0
TO RESIDENTS	8	100.0	18	100.0	3	37.5	9	50.0	3	37.5	6	33.3
<b>FACILITY</b>												
HOSPITAL	8	100.0	18	100.0	3	100.0	9	100.0	3	100.0	6	100.0
BIRTHING CENTER	0	0.0	0	0.0	0	0.0	0	0.0	0	0.0	0	0.0
HOME	0	0.0	0	0.0	0	0.0	0	0.0	0	0.0	0	0.0
OTHER	0	0.0	0	0.0	0	0.0	0	0.0	0	0.0	0	0.0
OUTSIDE ALASKA	0	0.0	0	0.0	0	0.0	0	0.0	0	0.0	0	0.0
<b>MOTHER CHARACTERISTICS</b>												
<b>AGE GROUP</b>												
<15	0	0.0	0	0.0	**	**	0	0.0	**	**	0	0.0
15-19	1	12.5	1	5.6	**	**	0	0.0	**	**	1	16.7
20-24	4	50.0	6	33.3	**	**	2	22.2	**	**	2	33.3
25-29	0	0.0	4	22.2	**	**	3	33.3	**	**	1	16.7
30-34	2	25.0	3	16.7	**	**	2	22.2	**	**	0	0.0
35-39	0	0.0	2	11.1	**	**	0	0.0	**	**	2	33.3
40-44	1	12.5	2	11.1	**	**	2	22.2	**	**	0	0.0
45+	0	0.0	0	0.0	**	**	0	0.0	**	**	0	0.0
REPORTED DRINKING	0	0.0	1	5.6	**	**	0	0.0	**	**	1	16.7
REPORTED SMOKING	4	50.0	6	33.3	**	**	3	33.3	**	**	2	33.3
UNWED	5	62.5	10	55.6	**	**	5	55.6	**	**	5	83.3
<b>EDUCATION</b>												
<12 YEARS	1	14.3	1	6.3	**	**	0	0.0	**	**	1	16.7
12 YEARS	2	28.6	6	37.5	**	**	3	42.9	**	**	2	33.3
12+ YEARS	4	57.1	9	56.3	**	**	4	57.1	**	**	3	50.0
<b>PRENATAL CARE</b>												
<b>TRIMESTER CARE BEGAN</b>												
1ST TRIMESTER	6	75.0	13	72.2	**	**	6	66.7	**	**	5	83.3
3RD TRIMESTER	0	0.0	1	5.6	**	**	1	11.1	**	**	0	0.0
NO PRENATAL CARE	0	0.0	0	0.0	**	**	0	0.0	**	**	0	0.0
<b>APNCU INDEX</b>												
ADEQUATE+	2	25.0	3	16.7	**	**	0	0.0	**	**	2	33.3
ADEQUATE	2	25.0	5	27.8	**	**	4	44.4	**	**	1	16.7
INTERMEDIATE	2	25.0	4	22.2	**	**	1	11.1	**	**	2	33.3
INADEQUATE	2	25.0	6	33.3	**	**	4	44.4	**	**	1	16.7
<b>KESSNER INDEX</b>												
ADEQUATE	4	50.0	9	50.0	**	**	4	44.4	**	**	4	66.7
INTERMEDIATE	4	50.0	8	44.4	**	**	4	44.4	**	**	2	33.3
INADEQUATE	0	0.0	1	5.6	**	**	1	11.1	**	**	0	0.0
<b>C-SECTION BIRTHS</b>	4	50.0	5	29.4	**	**	2	22.2	**	**	3	60.0
<b>PRE-TERM BIRTHS</b>	1	12.5	1	5.6	**	**	0	0.0	**	**	0	0.0
<b>LOW BIRTHWEIGHT</b>	0	0.0	0	0.0	**	**	0	0.0	**	**	0	0.0

Note: Unknown responses are excluded from the denominator when calculating percentages.

(1) Rate per 1,000 population.

\* Rates based on fewer than 10 occurrences are statistically unreliable and should be used with caution.

\*\* Data suppressed for confidentiality concerns if total births to residents, by race, is less than five observations.



**TABLE 2** **SELECTED BIRTH STATISTICS REPORTED BY MOTHER'S RACE:**  
**2000 AND 1998-2000**  
**YUKON-KOYUKUK CENSUS AREA**

	TOTAL				WHITE				NATIVE			
	2000 NUMBER	2000 RATE*	1998-2000 NUMBER	1998-2000 RATE*	2000 NUMBER	2000 RATE*	1998-2000 NUMBER	1998-2000 RATE*	2000 NUMBER	2000 RATE*	1998-2000 NUMBER	1998-2000 RATE*
<b>BIRTH RATES (1)</b>												
CRUDE BIRTH RATE	113	17.2	341	17.6								
TEEN BIRTH RATE												
15-17	13	62.5	29	46.8								
18-19	13	171.1	35	166.7								
15-19	26	91.5	64	77.2								
FERTILITY RATE	113	90.8	341	93.6								
	2000 NUMBER	2000 %	1998-2000 NUMBER	1998-2000 %	2000 NUMBER	2000 %	1998-2000 NUMBER	1998-2000 %	2000 NUMBER	2000 %	1998-2000 NUMBER	1998-2000 %
<b>BIRTHS</b>												
WITHIN AREA	4	100.0	8	100.0	2	50.0	2	25.0	2	50.0	6	75.0
TO RESIDENTS	113	100.0	341	100.0	18	15.9	67	19.6	89	78.8	263	77.1
<b>FACILITY</b>												
HOSPITAL	104	92.0	320	93.8	13	72.2	55	82.1	87	97.8	256	97.3
BIRTHING CENTER	5	4.4	10	2.9	5	27.8	10	14.9	0	0.0	0	0.0
HOME	1	0.9	1	0.3	0	0.0	0	0.0	1	1.1	1	0.4
OTHER	1	0.9	6	1.8	0	0.0	0	0.0	1	1.1	6	2.3
OUTSIDE ALASKA	2	1.8	4	1.2	0	0.0	2	3.0	0	0.0	0	0.0
<b>MOTHER CHARACTERISTICS</b>												
<b>AGE GROUP</b>												
<15	0	0.0	1	0.3	0	0.0	0	0.0	0	0.0	1	0.4
15-19	26	23.0	64	18.8	0	0.0	2	3.0	25	28.1	60	22.8
20-24	26	23.0	88	25.8	2	11.1	12	17.9	24	27.0	76	28.9
25-29	25	22.1	68	19.9	3	16.7	18	26.9	20	22.5	47	17.9
30-34	21	18.6	67	19.6	7	38.9	19	28.4	12	13.5	44	16.7
35-39	12	10.6	41	12.0	5	27.8	13	19.4	6	6.7	26	9.9
40-44	3	2.7	12	3.5	1	5.6	3	4.5	2	2.2	9	3.4
45+	0	0.0	0	0.0	0	0.0	0	0.0	0	0.0	0	0.0
REPORTED DRINKING	6	5.4	19	5.6	0	0.0	1	1.5	6	6.7	18	6.8
REPORTED SMOKING	31	27.9	96	28.5	1	5.6	8	12.3	30	33.7	88	33.5
UNWED	67	60.4	212	62.7	1	5.6	16	24.2	64	71.9	192	73.0
<b>EDUCATION</b>												
<12 YEARS	24	22.6	62	18.9	1	5.6	4	6.0	23	26.7	57	22.4
12 YEARS	61	57.5	179	54.6	6	33.3	20	29.9	53	61.6	155	61.0
12+ YEARS	21	19.8	87	26.5	11	61.1	43	64.2	10	11.6	42	16.5
<b>PRENATAL CARE</b>												
<b>TRIMESTER CARE BEGAN</b>												
1ST TRIMESTER	56	52.8	215	65.2	13	72.2	49	75.4	39	46.4	158	61.7
3RD TRIMESTER	12	11.3	26	7.9	2	11.1	3	4.6	10	11.9	23	9.0
NO PRENATAL CARE	0	0.0	1	0.3	0	0.0	0	0.0	0	0.0	1	0.4
<b>APNCU INDEX</b>												
ADEQUATE+	9	8.5	36	10.9	1	5.6	6	9.2	7	8.3	29	11.3
ADEQUATE	22	20.8	76	23.0	10	55.6	28	43.1	12	14.3	48	18.7
INTERMEDIATE	24	22.6	99	29.9	3	16.7	19	29.2	20	23.8	77	30.0
INADEQUATE	51	48.1	119	36.0	4	22.2	12	18.5	45	53.6	102	39.7
<b>KESSNER INDEX</b>												
ADEQUATE	34	32.1	119	36.0	11	61.1	38	58.5	21	25.0	79	30.7
INTERMEDIATE	60	56.6	185	55.9	5	27.8	24	36.9	53	63.1	154	59.9
INADEQUATE	12	11.3	26	7.9	2	11.1	3	4.6	10	11.9	23	8.9
<b>C-SECTION BIRTHS</b>	14	12.6	38	11.2	3	16.7	7	10.6	10	11.2	29	11.0
<b>PRE-TERM BIRTHS</b>	9	8.2	38	11.2	1	5.6	3	4.5	7	8.0	33	12.6
<b>LOW BIRTHWEIGHT</b>	4	3.6	15	4.4	0	0.0	0	0.0	4	4.5	15	5.7

Note: Unknown responses are excluded from the denominator when calculating percentages.  
 (1) Rate per 1,000 population.  
 \* Rates based on fewer than 10 occurrences are statistically unreliable and should be used with caution.  
 \*\* Data suppressed for confidentiality concerns if total births to residents, by race, is less than five observations.

**TABLE 3 SELECTED BIRTH STATISTICS REPORTED BY MOTHER'S RACE AND NATIVE REGIONAL CORPORATION OF RESIDENCE: 2000 AND 1998-2000**

**AHTNA INCORPORATED**

	TOTAL				WHITE				NATIVE			
	2000 NUMBER	2000 %	1998-2000 NUMBER	1998-2000 %	2000 NUMBER	2000 %	1998-2000 NUMBER	1998-2000 %	2000 NUMBER	2000 %	1998-2000 NUMBER	1998-2000 %
<b>BIRTHS</b>												
WITHIN AREA	3	100.0	9	100.0	3	100.0	8	88.9	0	0.0	1	11.1
TO RESIDENTS	37	100.0	127	100.0	20	54.1	78	61.4	15	40.5	47	37.0
<b>FACILITY</b>												
HOSPITAL	28	75.7	101	79.5	12	60.0	56	71.8	15	100.0	44	93.6
BIRTHING CENTER	4	10.8	13	10.2	4	20.0	11	14.1	0	0.0	2	4.3
HOME	3	8.1	8	6.3	3	15.0	8	10.3	0	0.0	0	0.0
OTHER	0	0.0	2	1.6	0	0.0	1	1.3	0	0.0	1	2.1
OUTSIDE ALASKA	2	5.4	3	2.4	1	5.0	2	2.6	0	0.0	0	0.0
<b>MOTHER CHARACTERISTICS</b>												
AGE GROUP												
<15	0	0.0	1	0.8	0	0.0	0	0.0	0	0.0	1	2.1
15-19	10	27.0	22	17.3	3	15.0	6	7.7	7	46.6	16	34.0
15-17	3	8.1	5	3.9	1	5.0	1	1.3	2	13.3	4	8.5
18-19	7	18.9	17	13.4	2	10.0	5	6.4	5	33.3	12	25.5
20-24	5	13.5	23	18.1	3	15.0	15	19.2	1	6.7	7	14.9
25-29	10	27.0	37	29.1	7	35.0	24	30.8	3	20.0	13	27.7
30-34	6	16.2	27	21.3	3	15.0	19	24.4	2	13.3	7	14.9
35-39	4	10.8	11	8.7	2	10.0	8	10.3	2	13.3	3	6.4
40-44	2	5.4	6	4.7	2	10.0	6	7.7	0	0.0	0	0.0
45+	0	0.0	0	0.0	0	0.0	0	0.0	0	0.0	0	0.0
REPORTED DRINKING	2	5.6	6	4.8	1	5.0	3	3.9	1	6.7	3	6.4
REPORTED SMOKING	7	19.4	26	21.1	3	15.0	14	18.4	4	26.7	12	26.1
UNWED	13	36.1	47	37.6	4	20.0	19	24.7	9	60.0	28	59.6
EDUCATION												
<12 YEARS	5	14.3	20	16.4	1	5.0	3	3.9	4	28.6	17	38.6
12 YEARS	17	48.6	47	38.5	9	45.0	29	37.7	7	50.0	17	38.6
12+ YEARS	13	37.1	55	45.1	10	50.0	45	58.4	3	21.4	10	22.7
<b>PRENATAL CARE</b>												
TRIMESTER CARE BEGAN												
1ST TRIMESTER	30	85.7	100	83.3	18	94.7	65	89.0	11	73.3	34	73.9
3RD TRIMESTER	0	0.0	3	2.5	0	0.0	3	4.1	0	0.0	0	0.0
NO PRENATAL CARE	0	0.0	2	1.7	0	0.0	1	1.4	0	0.0	1	2.2
APNCU INDEX												
ADEQUATE+	6	17.6	26	21.7	1	5.6	14	19.2	4	26.7	11	23.9
ADEQUATE	15	44.1	43	35.8	8	44.4	25	34.2	7	46.7	18	39.1
INTERMEDIATE	5	14.7	24	20.0	4	22.2	19	26.0	1	6.7	5	10.9
INADEQUATE	8	23.5	25	20.8	5	27.8	14	19.2	3	20.0	11	23.9
KESSNER INDEX												
ADEQUATE	19	55.9	68	56.7	9	50.0	41	56.2	9	60.0	26	56.5
INTERMEDIATE	15	44.1	47	39.2	9	50.0	28	38.4	6	40.0	19	41.3
INADEQUATE	0	0.0	3	2.5	0	0.0	3	4.1	0	0.0	0	0.0
<b>C-SECTION BIRTHS</b>	5	13.5	17	13.4	4	20.0	15	19.2	1	6.7	2	4.3
<b>PRE-TERM BIRTHS</b>	2	5.4	11	8.7	1	5.0	5	6.4	1	6.7	6	12.8
<b>LOW BIRTHWEIGHT</b>	0	0.0	9	7.1	0	0.0	7	9.0	0	0.0	2	4.3

Note: Unknown responses are excluded from the denominator when calculating percentages.

**TABLE 3 SELECTED BIRTH STATISTICS REPORTED BY MOTHER'S RACE AND NATIVE REGIONAL CORPORATION OF RESIDENCE: 2000 AND 1998-2000****ALEUT CORPORATION**

	TOTAL				WHITE				NATIVE			
	2000 NUMBER	2000 %	1998-2000 NUMBER	1998-2000 %	2000 NUMBER	2000 %	1998-2000 NUMBER	1998-2000 %	2000 NUMBER	2000 %	1998-2000 NUMBER	1998-2000 %
<b>BIRTHS</b>												
WITHIN AREA	2	100.0	4	100.0	2	100.0	2	50.0	0	0.0	0	0.0
TO RESIDENTS	64	100.0	177	100.0	23	35.9	73	41.2	34	53.1	82	46.3
<b>FACILITY</b>												
HOSPITAL	47	73.4	123	69.5	10	43.5	28	38.4	34	100.0	82	100.0
BIRTHING CENTER	1	1.6	6	3.4	1	4.3	6	8.2	0	0.0	0	0.0
HOME	0	0.0	0	0.0	0	0.0	0	0.0	0	0.0	0	0.0
OTHER	0	0.0	2	1.1	0	0.0	0	0.0	0	0.0	0	0.0
OUTSIDE ALASKA	16	25.0	46	26.0	12	52.2	39	53.4	0	0.0	0	0.0
<b>MOTHER CHARACTERISTICS</b>												
AGE GROUP												
<15	0	0.0	1	0.6	0	0.0	0	0.0	0	0.0	1	1.2
15-19	4	6.4	14	8.0	2	9.1	4	5.6	2	5.8	8	9.8
15-17	1	1.6	5	2.9	0	0.0	0	0.0	1	2.9	4	4.9
18-19	3	4.8	9	5.1	2	9.1	4	5.6	1	2.9	4	4.9
20-24	20	31.7	45	25.7	4	18.2	14	19.7	16	47.1	30	36.6
25-29	11	17.5	32	18.3	7	31.8	15	21.1	4	11.8	15	18.3
30-34	16	25.4	42	24.0	4	18.2	17	23.9	7	20.6	14	17.1
35-39	11	17.5	37	21.1	5	22.7	20	28.2	5	14.7	13	15.9
40-44	1	1.6	4	2.3	0	0.0	1	1.4	0	0.0	1	1.2
45+	0	0.0	0	0.0	0	0.0	0	0.0	0	0.0	0	0.0
REPORTED DRINKING	1	1.8	3	2.0	0	0.0	1	1.9	1	2.9	2	2.4
REPORTED SMOKING	19	30.6	50	29.4	2	9.1	9	13.2	17	50.0	40	48.8
UNWED	27	43.5	66	38.4	8	36.4	16	23.2	17	50.0	45	54.9
EDUCATION												
<12 YEARS	6	9.7	16	10.1	0	0.0	3	5.1	5	15.6	10	12.7
12 YEARS	34	54.8	83	52.5	12	52.2	23	39.0	19	59.4	50	63.3
12+ YEARS	22	35.5	59	37.3	11	47.8	33	55.9	8	25.0	19	24.1
<b>PRENATAL CARE</b>												
TRIMESTER CARE BEGAN												
1ST TRIMESTER	51	83.6	139	81.3	19	82.6	56	77.8	27	81.8	67	82.7
3RD TRIMESTER	3	4.9	7	4.1	2	8.7	5	6.9	1	3.0	1	1.2
NO PRENATAL CARE	0	0.0	1	0.6	0	0.0	0	0.0	0	0.0	0	0.0
APNCU INDEX												
ADEQUATE+	34	55.7	77	45.6	9	39.1	20	29.0	22	66.7	50	61.7
ADEQUATE	12	19.7	46	27.2	6	26.1	22	31.9	4	12.1	19	23.5
INTERMEDIATE	6	9.8	22	13.0	3	13.0	15	21.7	3	9.1	5	6.2
INADEQUATE	9	14.8	23	13.6	5	21.7	12	17.4	4	12.1	7	8.6
KESSNER INDEX												
ADEQUATE	46	75.4	117	68.8	17	73.9	41	58.6	25	75.8	64	79.0
INTERMEDIATE	12	19.7	45	26.5	4	17.4	24	34.3	7	21.2	16	19.8
INADEQUATE	3	4.9	7	4.1	2	8.7	5	7.1	1	3.0	1	1.2
<b>C-SECTION BIRTHS</b>	14	21.9	29	16.4	6	26.1	12	16.4	6	17.6	13	15.9
<b>PRE-TERM BIRTHS</b>	4	6.3	8	4.5	2	8.7	3	4.1	2	5.9	2	2.4
<b>LOW BIRTHWEIGHT</b>	0	0.0	4	2.3	0	0.0	0	0.0	0	0.0	1	1.2

Note: Unknown responses are excluded from the denominator when calculating percentages.

**TABLE 3 SELECTED BIRTH STATISTICS REPORTED BY MOTHER'S RACE AND NATIVE REGIONAL CORPORATION OF RESIDENCE: 2000 AND 1998-2000**

**ARCTIC SLOPE CORPORATION**

	TOTAL				WHITE				NATIVE			
	2000 NUMBER	2000 %	1998-2000 NUMBER	1998-2000 %	2000 NUMBER	2000 %	1998-2000 NUMBER	1998-2000 %	2000 NUMBER	2000 %	1998-2000 NUMBER	1998-2000 %
<b>BIRTHS</b>												
WITHIN AREA	36	100.0	138	100.0	0	0.0	3	2.2	33	91.7	119	86.2
TO RESIDENTS	158	100.0	446	100.0	13	8.2	37	8.3	130	82.3	371	83.2
<b>FACILITY</b>												
HOSPITAL	153	96.8	426	95.5	11	84.6	26	70.3	128	98.5	364	98.1
BIRTHING CENTER	0	0.0	0	0.0	0	0.0	0	0.0	0	0.0	0	0.0
HOME	0	0.0	2	0.4	0	0.0	1	2.7	0	0.0	1	0.3
OTHER	3	1.9	7	1.6	0	0.0	0	0.0	2	1.5	6	1.6
OUTSIDE ALASKA	2	1.3	11	2.5	2	15.4	10	27.0	0	0.0	0	0.0
<b>MOTHER CHARACTERISTICS</b>												
<b>AGE GROUP</b>												
<15	0	0.0	2	0.4	0	0.0	0	0.0	0	0.0	2	0.5
15-19	27	17.1	75	16.8	0	0.0	0	0.0	24	18.5	71	19.1
15-17	11	7.0	34	7.6	0	0.0	0	0.0	11	8.5	33	8.9
18-19	16	10.1	41	9.2	0	0.0	0	0.0	13	10.0	38	10.2
20-24	48	30.4	133	29.8	3	23.1	9	24.3	44	33.8	121	32.6
25-29	36	22.8	104	23.3	4	30.8	11	29.7	24	18.5	78	21.0
30-34	27	17.1	82	18.4	2	15.4	11	29.7	23	17.7	66	17.8
35-39	18	11.4	44	9.9	4	30.8	5	13.5	13	10.0	30	8.1
40-44	2	1.3	6	1.3	0	0.0	1	2.7	2	1.5	3	0.8
45+	0	0.0	0	0.0	0	0.0	0	0.0	0	0.0	0	0.0
REPORTED DRINKING	12	7.7	44	10.1	0	0.0	0	0.0	12	9.4	43	11.7
REPORTED SMOKING	67	42.9	193	43.9	2	16.7	3	8.6	63	48.8	184	50.1
UNWED	86	54.8	251	56.5	0	0.0	2	5.7	80	61.5	236	63.6
<b>EDUCATION</b>												
<12 YEARS	41	27.0	129	30.1	0	0.0	1	2.8	40	32.0	125	35.0
12 YEARS	90	59.2	227	52.9	7	53.8	13	36.1	76	60.8	200	56.0
12+ YEARS	21	13.8	73	17.0	6	46.2	22	61.1	9	7.2	32	9.0
<b>PRENATAL CARE</b>												
<b>TRIMESTER CARE BEGAN</b>												
1ST TRIMESTER	110	71.9	337	76.9	11	84.6	32	88.9	87	68.5	279	76.0
3RD TRIMESTER	17	11.1	31	7.1	1	7.7	1	2.8	16	12.6	25	6.8
NO PRENATAL CARE	2	1.3	3	0.7	0	0.0	0	0.0	2	1.6	3	0.8
<b>APNCU INDEX</b>												
ADEQUATE+	34	22.1	90	20.5	5	41.7	11	31.4	27	20.9	74	20.1
ADEQUATE	47	30.5	128	29.2	4	33.3	15	42.9	38	29.5	105	28.5
INTERMEDIATE	31	20.1	108	24.6	2	16.7	4	11.4	25	19.4	91	24.7
INADEQUATE	40	26.0	110	25.1	1	8.3	5	14.3	37	28.7	96	26.0
<b>KESSNER INDEX</b>												
ADEQUATE	85	54.8	232	52.7	11	84.6	27	75.0	67	51.9	188	50.9
INTERMEDIATE	51	32.9	174	39.5	1	7.7	8	22.2	44	34.1	153	41.5
INADEQUATE	17	11.0	31	7.0	1	7.7	1	2.8	16	12.4	25	6.8
<b>C-SECTION BIRTHS</b>	19	12.0	44	9.9	2	15.4	5	13.5	12	9.2	33	8.9
<b>PRE-TERM BIRTHS</b>	18	11.4	58	13.0	1	7.7	1	2.7	14	10.8	54	14.6
<b>LOW BIRTHWEIGHT</b>	10	6.3	26	5.8	1	7.7	1	2.7	7	5.4	22	5.9

Note: Unknown responses are excluded from the denominator when calculating percentages.

**TABLE 3 SELECTED BIRTH STATISTICS REPORTED BY MOTHER'S RACE AND NATIVE REGIONAL CORPORATION OF RESIDENCE: 2000 AND 1998-2000**

**BERING STRAITS NATIVE CORPORATION**

	TOTAL				WHITE				NATIVE			
	2000 NUMBER	2000 %	1998-2000 NUMBER	1998-2000 %	2000 NUMBER	2000 %	1998-2000 NUMBER	1998-2000 %	2000 NUMBER	2000 %	1998-2000 NUMBER	1998-2000 %
<b>BIRTHS</b>												
WITHIN AREA	91	100.0	325	100.0	7	7.7	14	4.3	82	90.1	307	94.5
TO RESIDENTS	191	100.0	614	100.0	28	14.7	77	12.5	161	84.3	529	86.2
<b>FACILITY</b>												
HOSPITAL	184	96.3	590	96.1	24	85.7	64	83.1	158	98.1	519	98.1
BIRTHING CENTER	2	1.0	3	0.5	1	3.6	1	1.3	1	0.6	2	0.4
HOME	1	0.5	4	0.7	1	3.6	2	2.6	0	0.0	2	0.4
OTHER	2	1.0	5	0.8	0	0.0	0	0.0	2	1.2	5	0.9
OUTSIDE ALASKA	2	1.0	12	2.0	2	7.1	10	13.0	0	0.0	1	0.2
<b>MOTHER CHARACTERISTICS</b>												
<b>AGE GROUP</b>												
<15	1	0.5	6	1.0	0	0.0	0	0.0	1	0.6	6	1.1
15-19	35	18.3	104	16.9	1	3.6	4	5.2	34	21.1	99	18.8
15-17	8	4.2	34	5.5	0	0.0	2	2.6	8	5.0	31	5.9
18-19	27	14.1	70	11.4	1	3.6	2	2.6	26	16.1	68	12.9
20-24	53	27.7	174	28.3	4	14.3	11	14.3	48	29.8	161	30.4
25-29	51	26.7	164	26.7	8	28.6	20	26.0	43	26.7	140	26.5
30-34	31	16.2	99	16.1	7	25.0	26	33.8	23	14.3	72	13.6
35-39	18	9.4	58	9.4	6	21.4	12	15.6	12	7.5	46	8.7
40-44	2	1.0	8	1.3	2	7.1	3	3.9	0	0.0	5	0.9
45+	0	0.0	1	0.2	0	0.0	1	1.3	0	0.0	0	0.0
REPORTED DRINKING	15	7.9	49	8.1	1	3.6	3	4.1	14	8.8	46	8.8
REPORTED SMOKING	90	47.4	303	49.8	3	10.7	7	9.2	86	53.8	295	56.3
UNWED	103	54.2	359	58.7	6	21.4	18	23.4	97	60.6	340	64.5
<b>EDUCATION</b>												
<12 YEARS	46	24.2	136	22.8	2	7.1	4	5.4	44	27.5	131	25.4
12 YEARS	108	56.8	363	60.8	4	14.3	14	18.9	102	63.8	344	66.8
12+ YEARS	36	18.9	98	16.4	22	78.6	56	75.7	14	8.8	40	7.8
<b>PRENATAL CARE</b>												
<b>TRIMESTER CARE BEGAN</b>												
1ST TRIMESTER	162	85.7	438	72.6	26	92.9	69	90.8	134	84.3	363	69.9
3RD TRIMESTER	7	3.7	65	10.8	0	0.0	2	2.6	7	4.4	62	11.9
NO PRENATAL CARE	2	1.1	7	1.2	0	0.0	0	0.0	2	1.3	7	1.3
<b>APNCU INDEX</b>												
ADEQUATE+	40	21.4	118	19.7	3	11.1	18	24.0	37	23.4	100	19.3
ADEQUATE	72	38.5	186	31.0	15	55.6	32	42.7	57	36.1	150	29.0
INTERMEDIATE	51	27.3	142	23.7	8	29.6	20	26.7	41	25.9	120	23.2
INADEQUATE	22	11.8	147	24.5	1	3.7	5	6.7	21	13.3	140	27.1
<b>KESSNER INDEX</b>												
ADEQUATE	128	68.4	321	53.1	21	77.8	56	74.7	106	67.1	262	50.3
INTERMEDIATE	50	26.7	211	34.9	6	22.2	17	22.7	43	27.2	190	36.5
INADEQUATE	7	3.7	65	10.8	0	0.0	2	2.7	7	4.4	62	11.9
<b>C-SECTION BIRTHS</b>	8	4.2	39	6.4	2	7.1	10	13.0	6	3.7	26	4.9
<b>PRE-TERM BIRTHS</b>	24	12.6	84	13.7	2	7.1	8	10.4	22	13.7	74	14.0
<b>LOW BIRTHWEIGHT</b>	7	3.7	28	4.6	1	3.6	3	3.9	6	3.7	23	4.3

Note: Unknown responses are excluded from the denominator when calculating percentages.

**TABLE 3 SELECTED BIRTH STATISTICS REPORTED BY MOTHER'S RACE AND NATIVE REGIONAL CORPORATION OF RESIDENCE: 2000 AND 1998-2000**

**BRISTOL BAY NATIVE CORPORATION**

	TOTAL				WHITE				NATIVE			
	2000 NUMBER	2000 %	1998-2000 NUMBER	1998-2000 %	2000 NUMBER	2000 %	1998-2000 NUMBER	1998-2000 %	2000 NUMBER	2000 %	1998-2000 NUMBER	1998-2000 %
<b>BIRTHS</b>												
WITHIN AREA	59	100.0	193	100.0	3	5.1	11	5.7	56	94.9	180	93.3
TO RESIDENTS	126	100.0	415	100.0	21	16.7	86	20.7	103	81.7	323	77.8
<b>FACILITY</b>												
HOSPITAL	119	94.4	400	96.4	18	85.7	78	90.7	99	96.1	316	97.8
BIRTHING CENTER	0	0.0	1	0.2	0	0.0	1	1.2	0	0.0	0	0.0
HOME	1	0.8	2	0.5	0	0.0	1	1.2	1	1.0	1	0.3
OTHER	3	2.4	5	1.2	1	4.8	1	1.2	2	1.9	4	1.2
OUTSIDE ALASKA	3	2.4	7	1.7	2	9.5	5	5.8	1	1.0	2	0.6
<b>MOTHER CHARACTERISTICS</b>												
<b>AGE GROUP</b>												
<15	0	0.0	0	0.0	0	0.0	0	0.0	0	0.0	0	0.0
15-19	24	19.0	65	15.6	0	0.0	5	5.9	24	23.3	60	18.5
15-17	13	10.3	30	7.2	0	0.0	4	4.7	13	12.6	26	8.0
18-19	11	8.7	35	8.4	0	0.0	1	1.2	11	10.7	34	10.5
20-24	34	27.0	119	28.7	4	19.0	13	15.1	29	28.2	101	31.3
25-29	25	19.8	90	21.7	12	57.1	32	37.2	13	12.6	58	18.0
30-34	28	22.2	84	20.2	3	14.3	21	24.4	25	24.3	63	19.5
35-39	11	8.7	45	10.8	2	9.5	13	15.1	8	7.8	31	9.6
40-44	4	3.2	12	2.9	0	0.0	2	2.3	4	3.9	10	3.1
45+	0	0.0	0	0.0	0	0.0	0	0.0	0	0.0	0	0.0
REPORTED DRINKING	3	2.4	22	5.4	0	0.0	6	7.2	3	2.9	16	5.0
REPORTED SMOKING	41	32.5	152	36.8	0	0.0	9	10.7	41	39.8	143	44.3
UNWED	62	49.2	191	46.2	2	9.5	16	18.8	60	58.3	173	53.7
<b>EDUCATION</b>												
<12 YEARS	20	16.0	69	17.1	1	5.0	3	3.7	19	18.4	66	20.8
12 YEARS	74	59.2	231	57.2	9	45.0	34	41.5	64	62.1	195	61.5
12+ YEARS	31	24.8	104	25.7	10	50.0	45	54.9	20	19.4	56	17.7
<b>PRENATAL CARE</b>												
<b>TRIMESTER CARE BEGAN</b>												
1ST TRIMESTER	85	69.1	292	71.9	19	90.5	75	88.2	65	65.0	215	68.0
3RD TRIMESTER	19	15.4	50	12.3	1	4.8	4	4.7	18	18.0	44	13.9
NO PRENATAL CARE	3	2.4	7	1.7	0	0.0	0	0.0	3	2.9	7	2.2
<b>APNCU INDEX</b>												
ADEQUATE+	24	19.0	94	23.1	1	4.8	20	23.5	23	22.3	74	23.3
ADEQUATE	32	25.4	114	28.0	10	47.6	35	41.2	21	20.4	78	24.6
INTERMEDIATE	27	21.4	77	18.9	6	28.6	17	20.0	21	20.4	59	18.6
INADEQUATE	40	31.7	115	28.3	4	19.0	13	15.3	35	34.0	99	31.2
<b>KESSNER INDEX</b>												
ADEQUATE	61	48.4	213	52.1	15	71.4	61	71.8	45	43.7	151	47.3
INTERMEDIATE	43	34.1	139	34.0	5	23.8	20	23.5	37	35.9	117	36.7
INADEQUATE	19	15.1	50	12.2	1	4.8	4	4.7	18	17.5	44	13.8
<b>C-SECTION BIRTHS</b>	11	8.7	28	6.7	5	23.8	10	11.6	6	5.8	17	5.3
<b>PRE-TERM BIRTHS</b>	18	14.3	48	11.6	3	14.3	9	10.5	15	14.6	39	12.1
<b>LOW BIRTHWEIGHT</b>	9	7.1	27	6.5	2	9.5	7	8.1	7	6.8	20	6.2

Note: Unknown responses are excluded from the denominator when calculating percentages.

**TABLE 3 SELECTED BIRTH STATISTICS REPORTED BY MOTHER'S RACE AND NATIVE REGIONAL CORPORATION OF RESIDENCE: 2000 AND 1998-2000**

**CALISTA CORPORATION**

	TOTAL				WHITE				NATIVE			
	2000 NUMBER	2000 %	1998-2000 NUMBER	1998-2000 %	2000 NUMBER	2000 %	1998-2000 NUMBER	1998-2000 %	2000 NUMBER	2000 %	1998-2000 NUMBER	1998-2000 %
<b>BIRTHS</b>												
WITHIN AREA	383	100.0	1,209	100.0	4	1.0	26	2.2	376	98.2	1,178	97.4
TO RESIDENTS	633	100.0	1,908	100.0	23	3.6	83	4.4	607	95.9	1,816	95.2
<b>FACILITY</b>												
HOSPITAL	621	98.1	1,851	97.0	21	91.3	72	86.7	597	98.4	1,770	97.5
BIRTHING CENTER	0	0.0	2	0.1	0	0.0	2	2.4	0	0.0	0	0.0
HOME	0	0.0	5	0.3	0	0.0	1	1.2	0	0.0	4	0.2
OTHER	8	1.3	39	2.0	0	0.0	0	0.0	8	1.3	39	2.1
OUTSIDE ALASKA	4	0.6	11	0.6	2	8.7	8	9.6	2	0.3	3	0.2
<b>MOTHER CHARACTERISTICS</b>												
<b>AGE GROUP</b>												
<15	0	0.0	0	0.0	0	0.0	0	0.0	0	0.0	0	0.0
15-19	93	14.7	261	13.7	0	0.0	3	3.6	93	15.3	258	14.2
15-17	44	7.0	108	5.7	0	0.0	1	1.2	44	7.2	107	5.9
18-19	49	7.7	153	8.0	0	0.0	2	2.4	49	8.1	151	8.3
20-24	170	26.9	526	27.6	2	8.7	9	10.8	168	27.7	517	28.5
25-29	182	28.8	517	27.1	10	43.5	25	30.1	172	28.3	488	26.9
30-34	112	17.7	375	19.7	9	39.1	33	39.8	100	16.5	337	18.6
35-39	62	9.8	189	9.9	1	4.3	11	13.3	61	10.0	178	9.8
40-44	12	1.9	36	1.9	1	4.3	2	2.4	11	1.8	34	1.9
45+	2	0.3	4	0.2	0	0.0	0	0.0	2	0.3	4	0.2
REPORTED DRINKING	39	6.2	107	5.7	0	0.0	1	1.3	39	6.5	106	5.9
REPORTED SMOKING	161	25.6	379	20.0	2	8.7	7	8.4	159	26.3	372	20.6
UNWED	309	49.2	921	48.4	3	13.0	13	15.7	306	50.8	906	50.0
<b>EDUCATION</b>												
<12 YEARS	154	25.2	411	22.2	0	0.0	3	3.8	154	26.3	407	23.0
12 YEARS	378	61.8	1,206	65.0	4	17.4	16	20.3	373	63.7	1,185	67.1
12+ YEARS	80	13.1	237	12.8	19	82.6	60	75.9	59	10.1	174	9.9
<b>PRENATAL CARE</b>												
<b>TRIMESTER CARE BEGAN</b>												
1ST TRIMESTER	366	58.6	1,276	68.2	18	78.3	67	80.7	346	57.8	1,202	67.6
3RD TRIMESTER	92	14.7	191	10.2	1	4.3	6	7.2	91	15.2	185	10.4
NO PRENATAL CARE	4	0.6	12	0.6	0	0.0	0	0.0	4	0.7	12	0.7
<b>APNCU INDEX</b>												
ADEQUATE+	72	11.6	208	11.2	4	18.2	22	26.8	68	11.4	185	10.5
ADEQUATE	131	21.1	389	21.0	9	40.9	28	34.1	121	20.3	359	20.4
INTERMEDIATE	142	22.9	529	28.6	4	18.2	17	20.7	136	22.9	507	28.8
INADEQUATE	271	43.7	713	38.5	5	22.7	15	18.3	266	44.7	697	39.6
<b>KESSNER INDEX</b>												
ADEQUATE	192	31.0	635	34.3	15	68.2	57	69.5	175	29.4	573	32.5
INTERMEDIATE	332	53.5	1,014	54.8	6	27.3	19	23.2	325	54.6	991	56.3
INADEQUATE	92	14.8	191	10.3	1	4.5	6	7.3	91	15.3	185	10.5
<b>C-SECTION BIRTHS</b>	41	6.5	131	6.9	4	17.4	11	13.3	37	6.1	119	6.6
<b>PRE-TERM BIRTHS</b>	70	11.1	237	12.4	0	0.0	5	6.0	70	11.5	232	12.8
<b>LOW BIRTHWEIGHT</b>	31	4.9	95	5.0	0	0.0	1	1.2	31	5.1	94	5.2

Note: Unknown responses are excluded from the denominator when calculating percentages.

**TABLE 3 SELECTED BIRTH STATISTICS REPORTED BY MOTHER'S RACE AND NATIVE REGIONAL CORPORATION OF RESIDENCE: 2000 AND 1998-2000**

**CHUGACH ALASKA CORPORATION**

	TOTAL				WHITE				NATIVE			
	2000 NUMBER	2000 %	1998-2000 NUMBER	1998-2000 %	2000 NUMBER	2000 %	1998-2000 NUMBER	1998-2000 %	2000 NUMBER	2000 %	1998-2000 NUMBER	1998-2000 %
<b>BIRTHS</b>												
WITHIN AREA	34	100.0	125	100.0	25	73.5	105	84.0	6	17.6	10	8.0
TO RESIDENTS	129	100.0	499	100.0	93	72.1	338	67.7	25	19.4	132	26.5
<b>FACILITY</b>												
HOSPITAL	122	94.6	473	94.8	87	93.5	315	93.2	25	100.0	131	99.2
BIRTHING CENTER	1	0.8	9	1.8	0	0.0	8	2.4	0	0.0	0	0.0
HOME	1	0.8	3	0.6	1	1.1	2	0.6	0	0.0	1	0.8
OTHER	0	0.0	0	0.0	0	0.0	0	0.0	0	0.0	0	0.0
OUTSIDE ALASKA	5	3.9	14	2.8	5	5.4	13	3.8	0	0.0	0	0.0
<b>MOTHER CHARACTERISTICS</b>												
<b>AGE GROUP</b>												
<15	0	0.0	0	0.0	0	0.0	0	0.0	0	0.0	0	0.0
15-19	10	7.7	54	10.8	6	6.5	30	8.9	3	12.0	21	15.9
15-17	3	2.3	17	3.4	1	1.1	7	2.1	1	4.0	8	6.1
18-19	7	5.4	37	7.4	5	5.4	23	6.8	2	8.0	13	9.8
20-24	32	24.8	128	25.7	23	24.7	86	25.4	7	28.0	36	27.3
25-29	28	21.7	125	25.1	22	23.7	77	22.8	4	16.0	41	31.1
30-34	33	25.6	108	21.6	23	24.7	79	23.4	6	24.0	21	15.9
35-39	22	17.1	68	13.6	17	18.3	53	15.7	3	12.0	10	7.6
40-44	4	3.1	16	3.2	2	2.2	13	3.8	2	8.0	3	2.3
45+	0	0.0	0	0.0	0	0.0	0	0.0	0	0.0	0	0.0
REPORTED DRINKING	4	3.2	23	4.7	4	4.5	14	4.2	0	0.0	9	6.9
REPORTED SMOKING	28	22.2	119	24.0	19	21.1	57	17.1	9	36.0	59	44.7
UNWED	38	29.7	164	32.9	26	28.3	89	26.4	10	40.0	68	51.5
<b>EDUCATION</b>												
<12 YEARS	11	8.7	49	10.2	7	7.7	25	7.6	3	12.5	21	16.9
12 YEARS	48	38.1	187	38.9	32	35.2	112	33.8	10	41.7	63	50.8
12+ YEARS	67	53.2	245	50.9	52	57.1	194	58.6	11	45.8	40	32.3
<b>PRENATAL CARE</b>												
<b>TRIMESTER CARE BEGAN</b>												
1ST TRIMESTER	101	80.2	395	81.6	76	83.5	268	81.7	17	70.8	104	80.6
3RD TRIMESTER	6	4.8	16	3.3	2	2.2	9	2.7	2	8.3	5	3.9
NO PRENATAL CARE	0	0.0	4	0.8	0	0.0	4	1.2	0	0.0	0	0.0
<b>APNCU INDEX</b>												
ADEQUATE+	27	23.1	115	24.2	20	23.5	84	25.8	5	20.8	27	21.3
ADEQUATE	47	40.2	197	41.4	37	43.5	134	41.2	8	33.3	52	40.9
INTERMEDIATE	23	19.7	90	18.9	17	20.0	58	17.8	5	20.8	27	21.3
INADEQUATE	20	17.1	70	14.7	11	12.9	45	13.8	6	25.0	21	16.5
<b>KESSNER INDEX</b>												
ADEQUATE	74	62.7	315	66.0	59	69.4	228	70.2	11	45.8	72	56.7
INTERMEDIATE	38	32.2	142	29.8	24	28.2	84	25.8	11	45.8	50	39.4
INADEQUATE	6	5.1	16	3.4	2	2.4	9	2.8	2	8.3	5	3.9
<b>C-SECTION BIRTHS</b>	25	19.4	79	15.8	21	22.6	69	20.4	3	12.0	8	6.1
<b>PRE-TERM BIRTHS</b>	11	8.5	55	11.0	8	8.6	34	10.1	1	4.0	15	11.4
<b>LOW BIRTHWEIGHT</b>	8	6.2	36	7.2	6	6.5	27	8.0	1	4.0	7	5.3

Note: Unknown responses are excluded from the denominator when calculating percentages.



**TABLE 3 SELECTED BIRTH STATISTICS REPORTED BY MOTHER'S RACE AND NATIVE REGIONAL CORPORATION OF RESIDENCE: 2000 AND 1998-2000**

**COOK INLET REGIONAL CORPORATION**

	TOTAL				WHITE				NATIVE			
	2000 NUMBER	2000 %	1998-2000 NUMBER	1998-2000 %	2000 NUMBER	2000 %	1998-2000 NUMBER	1998-2000 %	2000 NUMBER	2000 %	1998-2000 NUMBER	1998-2000 %
<b>BIRTHS</b>												
WITHIN AREA	6,321	100.0	18,958	100.0	4,204	66.5	13,117	69.2	1,277	20.2	3,697	19.5
TO RESIDENTS	5,528	100.0	16,517	100.0	4,049	73.2	12,544	75.9	667	12.1	1,901	11.5
<b>FACILITY</b>												
HOSPITAL	5,230	94.6	15,628	94.6	3,770	93.1	11,712	93.4	661	99.1	1,885	99.2
BIRTHING CENTER	189	3.4	515	3.1	180	4.4	492	3.9	3	0.4	9	0.5
HOME	77	1.4	286	1.7	72	1.8	268	2.1	2	0.3	5	0.3
OTHER	3	0.1	7	0.0	3	0.1	7	0.1	0	0.0	0	0.0
OUTSIDE ALASKA	29	0.5	81	0.5	24	0.6	65	0.5	1	0.1	2	0.1
<b>MOTHER CHARACTERISTICS</b>												
<b>AGE GROUP</b>												
<15	8	0.1	20	0.1	3	0.1	10	0.1	0	0.0	2	0.1
15-19	617	11.1	1,810	11.0	376	9.3	1,161	9.3	128	19.1	364	19.1
15-17	189	3.4	608	3.7	94	2.3	346	2.8	49	7.3	149	7.8
18-19	428	7.7	1,202	7.3	282	7.0	815	6.5	79	11.8	215	11.3
20-24	1,442	26.1	4,324	26.2	1,028	25.4	3,154	25.1	206	30.9	606	31.9
25-29	1,538	27.8	4,643	28.1	1,148	28.4	3,635	29.0	175	26.2	466	24.5
30-34	1,155	20.9	3,436	20.8	886	21.9	2,722	21.7	100	15.0	290	15.3
35-39	597	10.8	1,802	10.9	482	11.9	1,478	11.8	43	6.4	129	6.8
40-44	164	3.0	448	2.7	121	3.0	352	2.8	15	2.2	44	2.3
45+	4	0.1	30	0.2	3	0.1	29	0.2	0	0.0	0	0.0
REPORTED DRINKING	122	2.2	454	2.8	77	1.9	270	2.2	35	5.3	160	8.5
REPORTED SMOKING	860	15.7	2,617	16.0	576	14.3	1,790	14.3	208	31.5	654	34.7
UNWED	1,707	30.9	4,958	30.1	1,002	24.8	3,080	24.6	380	57.5	1,085	57.3
<b>EDUCATION</b>												
<12 YEARS	683	12.7	2,060	12.7	373	9.4	1,230	9.9	188	28.9	551	30.4
12 YEARS	2,055	38.1	6,236	38.6	1,478	37.1	4,633	37.4	284	43.7	814	44.9
12+ YEARS	2,650	49.2	7,876	48.7	2,131	53.5	6,523	52.7	178	27.4	448	24.7
<b>PRENATAL CARE</b>												
<b>TRIMESTER CARE BEGAN</b>												
1ST TRIMESTER	4,536	84.8	13,633	84.3	3,432	86.7	10,548	85.4	517	79.2	1,486	79.9
3RD TRIMESTER	132	2.5	442	2.7	78	2.0	323	2.6	21	3.2	54	2.9
NO PRENATAL CARE	21	0.4	76	0.5	10	0.3	46	0.4	5	0.8	13	0.7
<b>APNCU INDEX</b>												
ADEQUATE+	1,515	29.4	5,112	32.0	1,147	30.2	4,028	33.0	153	23.6	427	23.2
ADEQUATE	2,447	47.5	7,400	46.4	1,875	49.3	5,828	47.8	291	44.8	789	42.8
INTERMEDIATE	669	13.0	1,836	11.5	461	12.1	1,252	10.3	105	16.2	348	18.9
INADEQUATE	499	9.7	1,530	9.6	309	8.1	1,034	8.5	95	14.6	267	14.5
<b>KESSNER INDEX</b>												
ADEQUATE	3,996	77.5	12,391	77.6	3,064	80.5	9,753	80.0	428	65.8	1,198	64.9
INTERMEDIATE	1,010	19.6	3,060	19.2	653	17.2	2,076	17.0	196	30.2	580	31.4
INADEQUATE	132	2.6	442	2.8	78	2.0	323	2.6	21	3.2	54	2.9
<b>C-SECTION BIRTHS</b>	1,033	18.7	2,791	16.9	780	19.3	2,189	17.5	73	10.9	204	10.7
<b>PRE-TERM BIRTHS</b>	562	10.2	1,710	10.4	380	9.4	1,205	9.6	72	10.8	237	12.5
<b>LOW BIRTHWEIGHT</b>	325	5.9	1,008	6.1	190	4.7	679	5.4	51	7.6	134	7.0

Note: Unknown responses are excluded from the denominator when calculating percentages.

**TABLE 3 SELECTED BIRTH STATISTICS REPORTED BY MOTHER'S RACE AND NATIVE REGIONAL CORPORATION OF RESIDENCE: 2000 AND 1998-2000**

**DOYON LIMITED**

	TOTAL				WHITE				NATIVE			
	2000 NUMBER	2000 %	1998-2000 NUMBER	1998-2000 %	2000 NUMBER	2000 %	1998-2000 NUMBER	1998-2000 %	2000 NUMBER	2000 %	1998-2000 NUMBER	1998-2000 %
<b>BIRTHS</b>												
WITHIN AREA	1,739	100.0	4,972	100.0	1,242	71.4	3,624	72.9	259	14.9	721	14.5
TO RESIDENTS	1,763	100.0	5,073	100.0	1,251	71.0	3,661	72.2	270	15.3	771	15.2
<b>FACILITY</b>												
HOSPITAL	1,678	95.2	4,802	94.7	1,176	94.0	3,421	93.4	266	98.5	759	98.4
BIRTHING CENTER	52	2.9	163	3.2	47	3.8	150	4.1	2	0.7	4	0.5
HOME	20	1.1	61	1.2	19	1.5	59	1.6	1	0.4	1	0.1
OTHER	3	0.2	10	0.2	2	0.2	4	0.1	1	0.4	6	0.8
OUTSIDE ALASKA	10	0.6	37	0.7	7	0.6	27	0.7	0	0.0	1	0.1
<b>MOTHER CHARACTERISTICS</b>												
AGE GROUP												
<15	5	0.3	7	0.1	4	0.3	5	0.1	0	0.0	1	0.1
15-19	191	10.8	532	10.5	104	8.3	315	8.6	59	21.9	151	19.6
15-17	67	3.8	175	3.5	31	2.5	90	2.5	24	8.9	60	7.8
18-19	124	7.0	357	7.0	73	5.8	225	6.1	35	13.0	91	11.8
20-24	546	31.0	1,593	31.4	389	31.1	1,114	30.4	84	31.1	245	31.8
25-29	490	27.8	1,400	27.6	362	28.9	1,061	29.0	73	27.0	181	23.5
30-34	337	19.1	963	19.0	246	19.7	728	19.9	29	10.7	108	14.0
35-39	157	8.9	452	8.9	117	9.4	345	9.4	19	7.0	64	8.3
40-44	35	2.0	121	2.4	27	2.2	88	2.4	6	2.2	21	2.7
45+	2	0.1	4	0.1	2	0.2	4	0.1	0	0.0	0	0.0
REPORTED DRINKING	19	1.1	79	1.6	7	0.6	37	1.0	10	3.7	35	4.6
REPORTED SMOKING	263	15.0	699	13.8	162	13.0	442	12.1	82	30.5	222	28.8
UNWED	465	26.4	1,305	25.8	230	18.4	655	17.9	167	61.9	492	63.8
EDUCATION												
<12 YEARS	190	11.2	528	10.7	109	8.9	309	8.6	68	26.2	181	24.2
12 YEARS	822	48.5	2,220	44.8	580	47.2	1,531	42.4	136	52.3	380	50.7
12+ YEARS	684	40.3	2,209	44.6	541	44.0	1,770	49.0	56	21.5	188	25.1
<b>PRENATAL CARE</b>												
TRIMESTER CARE BEGAN												
1ST TRIMESTER	1,285	74.6	3,750	75.2	959	78.2	2,785	77.1	147	56.8	487	65.0
3RD TRIMESTER	99	5.7	306	6.1	59	4.8	201	5.6	28	10.8	65	8.7
NO PRENATAL CARE	2	0.1	8	0.2	1	0.1	5	0.1	0	0.0	2	0.3
APNCU INDEX												
ADEQUATE+	353	20.5	1,134	22.7	249	20.3	824	22.8	50	19.3	138	18.4
ADEQUATE	679	39.4	1,873	37.5	526	42.9	1,436	39.8	62	23.9	197	26.3
INTERMEDIATE	328	19.0	944	18.9	228	18.6	657	18.2	49	18.9	183	24.4
INADEQUATE	360	20.9	1,033	20.7	222	18.1	689	19.1	98	37.8	230	30.7
KESSNER INDEX												
ADEQUATE	1,063	61.7	3,075	61.6	808	65.9	2,342	64.8	107	41.3	326	43.5
INTERMEDIATE	558	32.4	1,605	32.1	358	29.2	1,065	29.5	124	47.9	357	47.6
INADEQUATE	99	5.7	306	6.1	59	4.8	201	5.6	28	10.8	65	8.7
<b>C-SECTION BIRTHS</b>	291	16.5	763	15.0	210	16.8	558	15.2	47	17.4	117	15.2
<b>PRE-TERM BIRTHS</b>	161	9.1	480	9.5	110	8.8	318	8.7	33	12.2	103	13.4
<b>LOW BIRTHWEIGHT</b>	101	5.7	300	5.9	68	5.4	189	5.2	17	6.3	63	8.2

Note: Unknown responses are excluded from the denominator when calculating percentages.

**TABLE 3 SELECTED BIRTH STATISTICS REPORTED BY MOTHER'S RACE AND NATIVE REGIONAL CORPORATION OF RESIDENCE: 2000 AND 1998-2000**

**KONIAG INCORPORATED**

	TOTAL				WHITE				NATIVE			
	2000 NUMBER	2000 %	1998-2000 NUMBER	1998-2000 %	2000 NUMBER	2000 %	1998-2000 NUMBER	1998-2000 %	2000 NUMBER	2000 %	1998-2000 NUMBER	1998-2000 %
<b>BIRTHS</b>												
WITHIN AREA	216	100.0	685	100.0	136	63.0	412	60.1	31	14.4	107	15.6
TO RESIDENTS	233	100.0	746	100.0	139	59.7	444	59.5	44	18.9	133	17.8
<b>FACILITY</b>												
HOSPITAL	224	96.1	716	96.0	130	93.5	416	93.7	44	100.0	131	98.5
BIRTHING CENTER	0	0.0	1	0.1	0	0.0	1	0.2	0	0.0	0	0.0
HOME	8	3.4	20	2.7	8	5.8	19	4.3	0	0.0	1	0.8
OTHER	0	0.0	2	0.3	0	0.0	1	0.2	0	0.0	1	0.8
OUTSIDE ALASKA	1	0.4	7	0.9	1	0.7	7	1.6	0	0.0	0	0.0
<b>MOTHER CHARACTERISTICS</b>												
<b>AGE GROUP</b>												
<15	0	0.0	1	0.1	0	0.0	0	0.0	0	0.0	1	0.8
15-19	14	6.0	69	9.2	8	5.7	31	7.0	5	11.3	22	16.6
15-17	4	1.7	18	2.4	1	0.7	5	1.1	2	4.5	7	5.3
18-19	10	4.3	51	6.8	7	5.0	26	5.9	3	6.8	15	11.3
20-24	64	27.5	170	22.8	36	25.9	94	21.2	14	31.8	35	26.3
25-29	54	23.2	199	26.7	34	24.5	119	26.8	10	22.7	40	30.1
30-34	60	25.8	173	23.2	38	27.3	114	25.7	8	18.2	20	15.0
35-39	31	13.3	100	13.4	18	12.9	62	14.0	4	9.1	11	8.3
40-44	10	4.3	34	4.6	5	3.6	24	5.4	3	6.8	4	3.0
45+	0	0.0	0	0.0	0	0.0	0	0.0	0	0.0	0	0.0
REPORTED DRINKING	3	1.3	20	2.7	0	0.0	8	1.8	3	7.5	11	8.5
REPORTED SMOKING	36	15.9	105	14.2	17	12.4	48	10.9	18	45.0	51	39.5
UNWED	55	23.6	187	25.1	20	14.4	59	13.3	17	38.6	68	51.1
<b>EDUCATION</b>												
<12 YEARS	33	14.3	92	12.5	12	8.7	40	9.0	7	15.9	20	15.3
12 YEARS	85	37.0	321	43.5	48	34.8	163	36.9	19	43.2	75	57.3
12+ YEARS	112	48.7	325	44.0	78	56.5	239	54.1	18	40.9	36	27.5
<b>PRENATAL CARE</b>												
<b>TRIMESTER CARE BEGAN</b>												
1ST TRIMESTER	186	80.5	564	76.3	118	85.5	356	81.1	36	83.7	107	81.7
3RD TRIMESTER	8	3.5	34	4.6	4	2.9	14	3.2	1	2.3	7	5.3
NO PRENATAL CARE	0	0.0	4	0.5	0	0.0	3	0.7	0	0.0	1	0.8
<b>APNCU INDEX</b>												
ADEQUATE+	38	16.7	101	13.7	19	13.8	66	15.0	10	25.0	18	14.0
ADEQUATE	79	34.6	240	32.5	54	39.1	163	37.0	12	30.0	34	26.4
INTERMEDIATE	78	34.2	242	32.7	50	36.2	141	32.0	12	30.0	49	38.0
INADEQUATE	33	14.5	152	20.6	15	10.9	68	15.4	6	15.0	27	20.9
<b>KESSNER INDEX</b>												
ADEQUATE	152	66.7	431	58.3	98	71.0	292	66.2	29	72.5	72	55.8
INTERMEDIATE	68	29.8	270	36.5	36	26.1	132	29.9	10	25.0	49	38.0
INADEQUATE	8	3.5	34	4.6	4	2.9	14	3.2	1	2.5	7	5.4
<b>C-SECTION BIRTHS</b>	32	13.7	116	15.5	17	12.2	66	14.9	11	25.0	23	17.3
<b>PRE-TERM BIRTHS</b>	25	10.7	70	9.4	9	6.5	33	7.4	8	18.2	17	12.8
<b>LOW BIRTHWEIGHT</b>	12	5.2	50	6.7	2	1.4	21	4.7	3	6.8	7	5.3

Note: Unknown responses are excluded from the denominator when calculating percentages.

**TABLE 3 SELECTED BIRTH STATISTICS REPORTED BY MOTHER'S RACE AND NATIVE REGIONAL CORPORATION OF RESIDENCE: 2000 AND 1998-2000**

**NANA REGIONAL CORPORATION**

	TOTAL				WHITE				NATIVE			
	2000 NUMBER	2000 %	1998-2000 NUMBER	1998-2000 %	2000 NUMBER	2000 %	1998-2000 NUMBER	1998-2000 %	2000 NUMBER	2000 %	1998-2000 NUMBER	1998-2000 %
<b>BIRTHS</b>												
WITHIN AREA	102	100.0	320	100.0	1	1.0	7	2.2	101	99.0	313	97.8
TO RESIDENTS	157	100.0	518	100.0	6	3.8	30	5.8	151	96.2	486	93.8
<b>FACILITY</b>												
HOSPITAL	154	98.1	507	97.9	6	100.0	28	93.3	148	98.0	477	98.1
BIRTHING CENTER	0	0.0	0	0.0	0	0.0	0	0.0	0	0.0	0	0.0
HOME	1	0.6	1	0.2	0	0.0	0	0.0	1	0.7	1	0.2
OTHER	2	1.3	7	1.4	0	0.0	0	0.0	2	1.3	7	1.4
OUTSIDE ALASKA	0	0.0	3	0.6	0	0.0	2	6.7	0	0.0	1	0.2
<b>MOTHER CHARACTERISTICS</b>												
<b>AGE GROUP</b>												
<15	0	0.0	1	0.2	0	0.0	0	0.0	0	0.0	1	0.2
15-19	32	20.4	94	18.1	1	16.7	1	3.3	31	20.5	93	19.1
15-17	11	7.0	36	6.9	1	16.7	1	3.3	10	6.6	35	7.2
18-19	21	13.4	58	11.2	0	0.0	0	0.0	21	13.9	58	11.9
20-24	44	28.0	144	27.8	0	0.0	3	10.0	44	29.1	141	29.0
25-29	36	22.9	129	24.9	3	50.0	11	36.7	33	21.9	117	24.1
30-34	26	16.6	90	17.4	2	33.3	12	40.0	24	15.9	78	16.0
35-39	14	8.9	40	7.7	0	0.0	1	3.3	14	9.3	38	7.8
40-44	5	3.2	18	3.5	0	0.0	1	3.3	5	3.3	17	3.5
45+	0	0.0	2	0.4	0	0.0	1	3.3	0	0.0	1	0.2
REPORTED DRINKING	17	10.8	79	15.4	0	0.0	0	0.0	17	11.3	79	16.4
REPORTED SMOKING	79	50.3	258	50.1	0	0.0	2	6.9	79	52.3	256	52.9
UNWED	94	61.0	325	63.4	2	33.3	6	21.4	92	62.2	319	66.0
<b>EDUCATION</b>												
<12 YEARS	49	35.0	138	29.2	1	20.0	1	3.4	48	35.6	137	31.1
12 YEARS	82	58.6	269	57.0	0	0.0	4	13.8	82	60.7	265	60.1
12+ YEARS	9	6.4	65	13.8	4	80.0	24	82.8	5	3.7	39	8.8
<b>PRENATAL CARE</b>												
<b>TRIMESTER CARE BEGAN</b>												
1ST TRIMESTER	118	76.6	378	74.6	3	50.0	25	86.2	115	77.7	351	73.7
3RD TRIMESTER	11	7.1	23	4.5	1	16.7	1	3.4	10	6.8	22	4.6
NO PRENATAL CARE	2	1.3	4	0.8	0	0.0	0	0.0	2	1.3	4	0.8
<b>APNCU INDEX</b>												
ADEQUATE+	29	18.8	116	23.0	3	50.0	10	35.7	26	17.6	105	22.1
ADEQUATE	40	26.0	151	29.9	1	16.7	11	39.3	39	26.4	139	29.3
INTERMEDIATE	42	27.3	124	24.6	0	0.0	5	17.9	42	28.4	119	25.1
INADEQUATE	41	26.6	110	21.8	2	33.3	2	7.1	39	26.4	108	22.7
<b>KESSNER INDEX</b>												
ADEQUATE	75	48.4	266	52.6	3	50.0	21	75.0	72	48.3	243	51.1
INTERMEDIATE	67	43.2	213	42.1	2	33.3	6	21.4	65	43.6	207	43.5
INADEQUATE	11	7.1	23	4.5	1	16.7	1	3.6	10	6.7	22	4.6
<b>C-SECTION BIRTHS</b>	8	5.1	27	5.2	2	33.3	6	20.0	6	4.0	21	4.3
<b>PRE-TERM BIRTHS</b>	23	14.6	77	14.9	0	0.0	5	16.7	23	15.2	72	14.8
<b>LOW BIRTHWEIGHT</b>	11	7.0	31	6.0	0	0.0	3	10.0	11	7.3	28	5.8

Note: Unknown responses are excluded from the denominator when calculating percentages.

**TABLE 3 SELECTED BIRTH STATISTICS REPORTED BY MOTHER'S RACE AND NATIVE REGIONAL CORPORATION OF RESIDENCE: 2000 AND 1998-2000**

**SEALASKA CORPORATION**

	TOTAL				WHITE				NATIVE			
	2000 NUMBER	2000 %	1998-2000 NUMBER	1998-2000 %	2000 NUMBER	2000 %	1998-2000 NUMBER	1998-2000 %	2000 NUMBER	2000 %	1998-2000 NUMBER	1998-2000 %
<b>BIRTHS</b>												
WITHIN AREA	884	100.0	2,618	100.0	582	65.8	1,798	68.7	233	26.4	647	24.7
TO RESIDENTS	954	100.0	2,817	100.0	627	65.7	1,917	68.1	248	26.0	701	24.9
<b>FACILITY</b>												
HOSPITAL	846	88.7	2,505	88.9	538	85.8	1,664	86.8	241	97.2	670	95.6
BIRTHING CENTER	40	4.2	109	3.9	34	5.4	97	5.1	4	1.6	7	1.0
HOME	25	2.6	79	2.8	23	3.7	73	3.8	1	0.4	4	0.6
OTHER	3	0.3	13	0.5	1	0.2	4	0.2	2	0.8	9	1.3
OUTSIDE ALASKA	40	4.2	111	3.9	31	4.9	79	4.1	0	0.0	11	1.6
<b>MOTHER CHARACTERISTICS</b>												
<b>AGE GROUP</b>												
<15	0	0.0	3	0.1	0	0.0	0	0.0	0	0.0	3	0.4
15-19	106	11.1	287	10.2	61	9.7	147	7.6	37	14.9	119	17.0
15-17	27	2.8	92	3.3	14	2.2	43	2.2	8	3.2	40	5.7
18-19	79	8.3	195	6.9	47	7.5	104	5.4	29	11.7	79	11.3
20-24	243	25.5	692	24.6	141	22.5	424	22.1	84	33.9	228	32.5
25-29	250	26.2	786	27.9	164	26.2	561	29.3	64	25.8	172	24.5
30-34	203	21.3	596	21.2	150	23.9	447	23.3	32	12.9	105	15.0
35-39	114	11.9	364	12.9	84	13.4	274	14.3	24	9.7	60	8.6
40-44	35	3.7	84	3.0	24	3.8	59	3.1	7	2.8	14	2.0
45+	3	0.3	5	0.2	3	0.5	5	0.3	0	0.0	0	0.0
REPORTED DRINKING	27	3.0	86	3.2	16	2.7	48	2.6	10	4.0	35	5.1
REPORTED SMOKING	182	19.5	523	19.0	108	17.6	312	16.6	64	25.9	194	27.9
UNWED	333	35.2	902	32.3	167	26.8	446	23.4	145	58.5	409	58.3
<b>EDUCATION</b>												
<12 YEARS	117	12.8	322	12.0	55	9.0	145	7.9	55	22.9	161	24.2
12 YEARS	394	43.2	1,139	42.6	225	36.9	695	37.8	133	55.4	366	55.0
12+ YEARS	402	44.0	1,212	45.3	329	54.0	998	54.3	52	21.7	139	20.9
<b>PRENATAL CARE</b>												
<b>TRIMESTER CARE BEGAN</b>												
1ST TRIMESTER	764	84.1	2,287	85.0	520	86.5	1,609	87.1	183	77.5	524	79.2
3RD TRIMESTER	17	1.9	49	1.8	8	1.3	24	1.3	7	3.0	21	3.2
NO PRENATAL CARE	5	0.6	10	0.4	4	0.7	8	0.4	1	0.4	2	0.3
<b>APNCU INDEX</b>												
ADEQUATE+	249	27.8	635	23.9	179	29.8	439	23.8	57	25.1	159	24.7
ADEQUATE	352	39.3	1,091	41.0	256	42.7	815	44.3	70	30.8	207	32.2
INTERMEDIATE	197	22.0	643	24.2	114	19.0	426	23.1	62	27.3	166	25.8
INADEQUATE	93	10.4	283	10.6	47	7.8	153	8.3	37	16.3	109	17.0
<b>KESSNER INDEX</b>												
ADEQUATE	673	75.0	1,945	73.0	478	79.7	1,414	76.8	146	64.0	409	63.5
INTERMEDIATE	202	22.5	659	24.7	110	18.3	395	21.5	74	32.5	212	32.9
INADEQUATE	17	1.9	49	1.8	8	1.3	24	1.3	7	3.1	21	3.3
<b>C-SECTION BIRTHS</b>	208	21.8	580	20.6	142	22.6	426	22.2	44	17.7	107	15.3
<b>PRE-TERM BIRTHS</b>	90	9.4	241	8.6	49	7.8	137	7.1	32	12.9	79	11.3
<b>LOW BIRTHWEIGHT</b>	42	4.4	103	3.7	32	5.1	65	3.4	7	2.8	30	4.3

Note: Unknown responses are excluded from the denominator when calculating percentages.