

CHILD AND ADOLESCENT DEATHS



"Kittiwakes, St. George"
Copyright Rie Munoz, Ltd.

INTRODUCTION

This chapter provides information on deaths to children and adolescents from 0 to 19 years of age. Deaths and death rates are reported by the following age groups: less than 1 year, 1 to 4 years, 5 to 9 years, 10 to 14 years, 15 to 19 years, and the total number of child and adolescent deaths. Note that for infants less than 1 year of age, infant

death rates are reported only at the statewide level. The infant death rates reported in this chapter are different than the infant mortality rates reported in Chapter 2. Infant mortality rates are based on the number of live births, while infant death rates are based on the estimated population under 1 year of age.

Statewide child and adolescent deaths and death rates are reported by age group and the sex and race of the child or adolescent. However, due to the low number of reportable events for most areas, child and adolescent deaths by census area, borough, and Native Regional Corporation are only reported by age group. Also, since population estimates for infants less than one year of age are only available at the statewide level, the death rates for this age group are not reported by census area (borough). Infant mortality rates by census area (borough) are available in Chapter 2. Since population estimates are not available by Native Regional Corporation and age group, rates are not reported in Table 13.

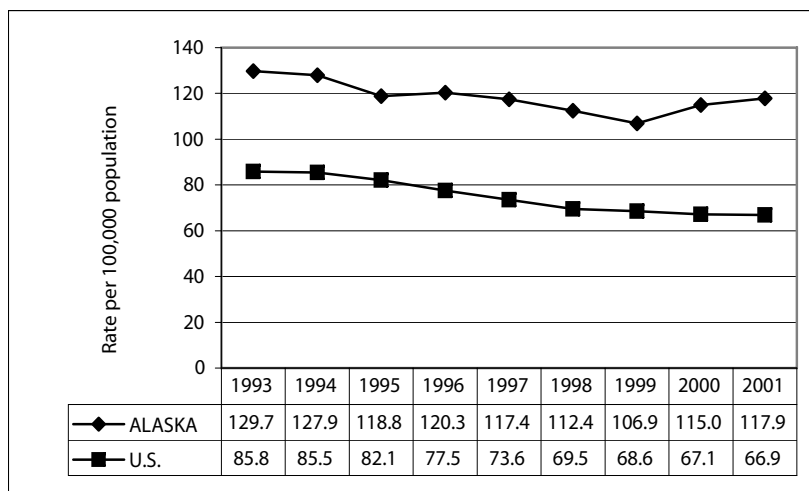
Death rates for Alaskan adolescents are higher than the corresponding U.S. rates (Table 10). Both the Alaska and the U.S. death rates for adolescents age 15 to 19 (Figure 11) have declined since 1993 (9.1 percent and 22 percent, respectively), although the Alaska rate is still more than 75 percent higher than the U.S. rate for this age group. Alaskan teens in this age group are more likely to die from unintentional injuries and suicides, compared with U.S. teens. In 2001, the suicide rate for this age group in Alaska was over 3 times the national rate (31.0 per 100,000 vs. 7.9) and the unintentional injury rate was 44.6 per 100,000 vs. 32.8.

TABLE 10 AGE-SPECIFIC ADOLESCENT DEATH RATES: ALASKA AND THE U.S.*, 1993-2001

| | 1993 | 1994 | 1995 | 1996 | 1997 | 1998 | 1999 | 2000 | 2001 |
|---------------|-------|-------|-------|-------|-------|-------|-------|-------|-------|
| ALASKA | | | | | | | | | |
| 1-4 | 51.9 | 54.5 | 55.3 | 52.0 | 56.0 | 48.3 | 45.7 | 43.5 | 49.3 |
| 5-9 | 24.4 | 20.9 | 23.6 | 21.7 | 25.2 | 23.4 | 23.6 | 19.2 | 17.3 |
| 10-14 | 38.4 | 36.8 | 37.8 | 28.4 | 33.6 | 32.0 | 27.8 | 27.0 | 27.8 |
| 15-19 | 129.7 | 127.9 | 118.8 | 120.3 | 117.4 | 112.4 | 106.9 | 115.0 | 117.9 |
| 1-19 | 56.3 | 55.2 | 54.8 | 51.8 | 54.8 | 51.6 | 49.0 | 49.6 | 51.7 |
| U.S. | | | | | | | | | |
| 1-4 | 44.6 | 42.7 | 40.4 | 38.0 | 35.5 | 34.1 | 34.2 | 32.4 | 33.3 |
| 5-9 | 21.0 | 19.7 | 19.4 | 19.0 | 18.0 | 17.2 | 16.9 | 15.8 | 15.3 |
| 10-14 | 25.3 | 24.8 | 25.1 | 23.4 | 22.5 | 21.5 | 20.4 | 20.3 | 19.2 |
| 15-19 | 85.8 | 85.5 | 82.1 | 77.5 | 73.6 | 69.5 | 68.6 | 67.1 | 66.9 |
| 1-19 | 43.5 | 42.5 | 41.3 | 39.2 | 37.2 | 35.5 | 34.9 | 33.9 | 33.6 |

Note: Alaska rates are three-year moving averages. Rates are per 100,000 population.

FIGURE 11 DEATH RATES FOR ADOLESCENTS AGE 15-19: ALASKA AND THE U.S.*, 1993-2001



Note: Alaska rates are three-year moving averages.

The remaining tables in this chapter show the annual occurrences of adolescent deaths to Alaskan residents during 2001 and for the three-year period 1999 through 2001. Selected causes of death by age group are shown in Table 14 (pages 73-74). The causes of death are based on the 113 selected causes of death tabulation list in ICD-10. From 1979 to 1998, causes of death were classified using ICD-9. Publications or tables showing mortality data under ICD-10 may differ substantially from those under ICD-9. Cause-of-death data across ICD revisions are not directly comparable, unless adjustments are made for the coding and classification changes. For further discussion on the implications of changing ICD revisions, please refer to Appendix C.

*U.S. rates provided by the United States Department of Health and Human Services (US DHHS), Centers for Disease Control and Prevention (CDC), National Center for Health Statistics (NCHS), Office of Analysis, Epidemiology, and Health Promotion (OAEHP), Compressed Mortality File (CMF) compiled from CMF 1968-1988, Series 20, No. 2A 2000, CMF 1989-1998, Series 20, No. 2E 2003 and CMF 1999-2001, Series 20, No. 2G 2004 on CDC WONDER On-line Database.

**TABLE 11 CHILD AND ADOLESCENT DEATHS BY RACE AND SEX
ALASKA: 2001 AND 1999-2001**

| RACE /SEX | AGE GROUP | | | | | | | | | | | |
|--------------|----------------|--------------|-----------------|---------------|----------------|--------------|-----------------|---------------|----------------|--------------|-----------------|---------------|
| | <1 | | | 1-4 | | | 5-9 | | | | | |
| | DEATHS 2001 | RATE 2001 | DEATHS 99-01 | RATE 99-01 | DEATHS 2001 | RATE 2001 | DEATHS 99-01 | RATE 99-01 | DEATHS 2001 | RATE 2001 | DEATHS 99-01 | RATE 99-01 |
| TOTAL DEATHS | 83 | 814.5 | 205 | 688.7 | 21 | 52.9 | 59 | 49.3 | 9 | 17.1 * | 28 | 17.3 |
| BY RACE | | | | | | | | | | | | |
| ASIAN/PI | 4 | 526.3 * | 8 | 411.1 * | 3 | 108.0 * | 5 | 66.1 * | 0 | 0.0 | 0 | 0.0 |
| BLACK | 1 | 189.0 * | 5 | 317.3 * | 0 | 0.0 | 0 | 0.0 | 0 | 0.0 | 0 | 0.0 |
| NATIVE | 38 | 1,637.9 | 90 | 1,279.1 | 10 | 107.8 | 34 | 122.3 | 3 | 25.0 * | 13 | 34.4 |
| WHITE | 40 | 607.8 | 102 | 531.0 | 8 | 31.6 * | 20 | 25.6 | 6 | 17.4 * | 15 | 14.0 |
| BY SEX | | | | | | | | | | | | |
| FEMALE | 41 | 840.7 | 96 | 669.5 | 11 | 57.0 | 24 | 41.2 | 2 | 7.7 * | 9 | 11.3 * |
| MALE | 42 | 790.5 | 109 | 706.5 | 10 | 49.1 | 35 | 57.0 | 7 | 26.0 * | 19 | 23.0 |

| RACE /SEX | AGE GROUP | | | | | | | | | | | |
|--------------|----------------|--------------|-----------------|---------------|----------------|--------------|-----------------|---------------|----------------|--------------|-----------------|---------------|
| | 10-14 | | | 15-19 | | | 0-19 | | | | | |
| | DEATHS 2001 | RATE 2001 | DEATHS 99-01 | RATE 99-01 | DEATHS 2001 | RATE 2001 | DEATHS 99-01 | RATE 99-01 | DEATHS 2001 | RATE 2001 | DEATHS 99-01 | RATE 99-01 |
| TOTAL DEATHS | 20 | 35.0 | 47 | 27.8 | 53 | 102.7 | 177 | 117.9 | 186 | 88.0 | 516 | 81.8 |
| BY RACE | | | | | | | | | | | | |
| ASIAN/PI | 0 | 0.0 | 0 | 0.0 | 0 | 0.0 | 4 | 47.8 * | 7 | 49.6 * | 17 | 46.6 |
| BLACK | 0 | 0.0 | 0 | 0.0 | 3 | 136.5 * | 7 | 103.6 * | 4 | 38.2 * | 12 | 39.2 |
| NATIVE | 9 | 69.7 * | 20 | 52.8 | 24 | 215.5 | 86 | 267.6 | 84 | 176.3 | 243 | 170.4 |
| WHITE | 11 | 29.0 | 27 | 23.6 | 26 | 74.6 | 79 | 76.8 | 91 | 65.4 | 243 | 57.7 |
| BY SEX | | | | | | | | | | | | |
| FEMALE | 6 | 21.5 * | 13 | 15.8 | 14 | 56.6 | 48 | 66.9 | 74 | 72.0 | 190 | 62.0 |
| MALE | 14 | 47.8 | 34 | 39.1 | 39 | 145.1 | 129 | 164.6 | 112 | 103.0 | 326 | 100.4 |

*Rates based on fewer than 10 occurrences are statistically unreliable and should be used with caution.
Rates are per 100,000 population.

**TABLE 12 CHILD AND ADOLESCENT DEATHS FOR ALASKA: 2001 AND 1999–2001,
BY CENSUS AREA OR BOROUGH OF RESIDENCE AND AGE GROUP**

| CENSUS AREA/BOROUGH | 0–4 | | | | 5–9 | | | | 10–14 | | | |
|---|----------------|--------------|-----------------|---------------|----------------|--------------|-----------------|---------------|----------------|--------------|-----------------|---------------|
| | 2001 DEATHS | 2001 RATE | 99–01 DEATHS | 99–01 RATE | 2001 DEATHS | 2001 RATE | 99–01 DEATHS | 99–01 RATE | 2001 DEATHS | 2001 RATE | 99–01 DEATHS | 99–01 RATE |
| ALEUTIANS EAST BOROUGH | 0 | 0.0 | 0 | 0.0 | 0 | 0.0 | 0 | 0.0 | 0 | 0.0 | 0 | 0.0 |
| ALEUTIANS WEST CENSUS AREA | 0 | 0.0 | 3 | 310.2 * | 0 | 0.0 | 1 | 109.9 * | 0 | 0.0 | 0 | 0.0 |
| MUNICIPALITY OF ANCHORAGE | 40 | 188.8 | 85 | 135.6 | 4 | 18.2 * | 10 | 15.1 | 6 | 26.9 * | 11 | 16.8 |
| BETHEL CENSUS AREA | 11 | 551.1 | 30 | 509.5 | 1 | 52.6 * | 4 | 68.8 * | 0 | 0.0 | 0 | 0.0 |
| BRISTOL BAY BOROUGH | 0 | 0.0 | 0 | 0.0 | 0 | 0.0 | 0 | 0.0 | 0 | 0.0 | 0 | 0.0 |
| DENALI BOROUGH | 0 | 0.0 | 0 | 0.0 | 0 | 0.0 | 0 | 0.0 | 0 | 0.0 | 0 | 0.0 |
| DILLINGHAM CENSUS AREA | 2 | 416.7 * | 6 | 396.6 * | 0 | 0.0 | 1 | 61.1 * | 2 | 345.4 * | 2 | 120.3 * |
| FAIRBANKS NORTH STAR BOROUGH | 11 | 157.5 | 35 | 165.5 | 0 | 0.0 | 1 | 4.6 * | 3 | 40.3 * | 7 | 31.8 * |
| HAINES BOROUGH | 0 | 0.0 | 2 | 551.0 * | 0 | 0.0 | 0 | 0.0 | 0 | 0.0 | 0 | 0.0 |
| JUNEAU BOROUGH | 5 | 257.7 * | 8 | 129.6 * | 0 | 0.0 | 0 | 0.0 | 0 | 0.0 | 1 | 12.8 * |
| KENAI PENINSULA BOROUGH | 3 | 94.3 * | 12 | 123.4 | 1 | 26.9 * | 3 | 25.7 * | 0 | 0.0 | 1 | 7.2 * |
| KETCHIKAN GATEWAY BOROUGH | 0 | 0.0 | 2 | 70.9 * | 0 | 0.0 | 1 | 31.1 * | 0 | 0.0 | 0 | 0.0 |
| KODIAK ISLAND BOROUGH | 3 | 235.8 * | 4 | 104.4 * | 0 | 0.0 | 0 | 0.0 | 0 | 0.0 | 0 | 0.0 |
| LAKE AND PENINSULA BOROUGH | 0 | 0.0 | 4 | 796.8 * | 0 | 0.0 | 0 | 0.0 | 0 | 0.0 | 0 | 0.0 |
| MATANUSKA-SUSITNA BOROUGH | 11 | 261.6 | 22 | 181.0 | 0 | 0.0 | 2 | 13.3 * | 3 | 49.5 * | 11 | 62.1 |
| NOME CENSUS AREA | 4 | 398.8 * | 10 | 342.5 | 0 | 0.0 | 0 | 0.0 | 1 | 92.7 * | 3 | 97.9 * |
| NORTH SLOPE BOROUGH | 3 | 405.4 * | 4 | 182.6 * | 0 | 0.0 | 0 | 0.0 | 1 | 113.9 * | 3 | 116.3 * |
| NORTHWEST ARCTIC BOROUGH | 2 | 238.4 * | 7 | 284.0 * | 0 | 0.0 | 1 | 38.8 * | 1 | 100.8 * | 1 | 36.5 * |
| PRINCE OF WALES-OUTER KETCHIKAN CENSUS AREA | 0 | 0.0 | 2 | 151.2 * | 0 | 0.0 | 0 | 0.0 | 0 | 0.0 | 0 | 0.0 |
| SITKA BOROUGH | 0 | 0.0 | 5 | 288.9 * | 0 | 0.0 | 0 | 0.0 | 0 | 0.0 | 0 | 0.0 |
| SKAGWAY-HOONAH-ANGOON CENSUS AREA | 0 | 0.0 | 0 | 0.0 | 0 | 0.0 | 0 | 0.0 | 0 | 0.0 | 0 | 0.0 |
| SOUTHEAST FAIRBANKS CENSUS AREA | 1 | 232.6 * | 4 | 282.7 * | 2 | 415.8 * | 2 | 124.8 * | 0 | 0.0 | 0 | 0.0 |
| VALDEZ-CORDOVA CENSUS AREA | 1 | 153.6 * | 2 | 96.9 * | 0 | 0.0 | 0 | 0.0 | 0 | 0.0 | 0 | 0.0 |
| WADE HAMPTON CENSUS AREA | 5 | 478.0 * | 13 | 429.3 | 1 | 101.2 * | 2 | 66.0 * | 1 | 101.9 * | 3 | 106.6 * |
| WRANGELL-PETERSBURG CENSUS AREA | 0 | 0.0 | 0 | 0.0 | 0 | 0.0 | 0 | 0.0 | 1 | 166.9 * | 1 | 51.5 * |
| YAKUTAT BOROUGH | 0 | 0.0 | 0 | 0.0 | 0 | 0.0 | 0 | 0.0 | 0 | 0.0 | 0 | 0.0 |
| YUKON-KOYUKUK CENSUS AREA | 1 | 177.3 * | 2 | 125.3 * | 0 | 0.0 | 0 | 0.0 | 1 | 140.4 * | 3 | 136.7 * |
| ALASKA | 104 | 208.6 | 264 | 176.6 | 9 | 17.1 * | 28 | 17.3 | 20 | 35.0 | 47 | 27.8 |

(Continued ⇒)

Note: Statewide totals include deaths where the census area or borough of residence is unknown.

*Rates based on fewer than 10 occurrences are statistically unreliable and should be used with caution.

Population estimates are not available for infants less than one year of age by census area, so deaths and death rates for this age group are not reported separately. Rates are per 100,000 population.

TABLE 12 CHILD AND ADOLESCENT DEATHS FOR ALASKA: 2001 AND 1999–2001, BY CENSUS AREA OR BOROUGH OF RESIDENCE AND AGE GROUP (Continued)

| CENSUS AREA/BOROUGH | 15–19 | | | | 0–19 | | | |
|---|-------------|--------------|--------------|--------------|-------------|-------------|--------------|-------------|
| | 2001 DEATHS | 2001 RATE | 99–01 DEATHS | 99–01 RATE | 2001 DEATHS | 2001 RATE | 99–01 DEATHS | 99–01 RATE |
| ALEUTIANS EAST BOROUGH | 1 | 694.4 * | 2 | 404.0 * | 1 | 205.8 * | 2 | 114.5 * |
| ALEUTIANS WEST CENSUS AREA | 0 | 0.0 | 0 | 0.0 | 0 | 0.0 | 4 | 113.2 * |
| MUNICIPALITY OF ANCHORAGE | 14 | 69.6 | 49 | 83.8 | 64 | 74.8 | 155 | 61.3 |
| BETHEL CENSUS AREA | 4 | 272.5 * | 9 | 213.9 * | 16 | 222.4 | 43 | 202.5 |
| BRISTOL BAY BOROUGH | 0 | 0.0 | 1 | 341.3 * | 0 | 0.0 | 1 | 80.3 * |
| DENALI BOROUGH | 0 | 0.0 | 0 | 0.0 | 0 | 0.0 | 0 | 0.0 |
| DILLINGHAM CENSUS AREA | 0 | 0.0 | 2 | 168.2 * | 4 | 197.3 * | 11 | 183.2 |
| FAIRBANKS NORTH STAR BOROUGH | 4 | 60.3 * | 19 | 97.1 | 18 | 64.0 | 62 | 73.5 |
| HAINES BOROUGH | 0 | 0.0 | 0 | 0.0 | 0 | 0.0 | 2 | 102.8 * |
| JUNEAU BOROUGH | 0 | 0.0 | 5 | 68.1 * | 5 | 55.1 * | 14 | 49.1 |
| KENAI PENINSULA BOROUGH | 6 | 133.1 * | 15 | 116.2 | 10 | 62.5 | 31 | 64.4 |
| KETCHIKAN GATEWAY BOROUGH | 0 | 0.0 | 0 | 0.0 | 0 | 0.0 | 3 | 23.7 * |
| KODIAK ISLAND BOROUGH | 3 | 284.1 * | 4 | 127.9 * | 6 | 119.7 * | 8 | 54.0 * |
| LAKE AND PENINSULA BOROUGH | 2 | 1,219.5 * | 6 | 1,153.8 * | 2 | 291.5 * | 10 | 457.0 |
| MATANUSKA-SUSITNA BOROUGH | 7 | 118.9 * | 17 | 103.6 | 21 | 98.9 | 52 | 84.8 |
| NOME CENSUS AREA | 3 | 357.1 * | 10 | 416.3 | 8 | 203.0 * | 23 | 199.2 |
| NORTH SLOPE BOROUGH | 0 | 0.0 | 6 | 288.3 * | 4 | 131.2 * | 13 | 139.9 |
| NORTHWEST ARCTIC BOROUGH | 3 | 430.4 * | 9 | 453.2 * | 6 | 179.5 * | 18 | 184.3 |
| PRINCE OF WALES-OUTER KETCHIKAN CENSUS AREA | 0 | 0.0 | 2 | 122.9 * | 0 | 0.0 | 4 | 65.0 * |
| SITKA BOROUGH | 1 | 148.6 * | 1 | 49.3 * | 1 | 37.7 * | 6 | 76.0 * |
| SKAGWAY-HOONAH-ANGOON CENSUS AREA | 0 | 0.0 | 0 | 0.0 | 0 | 0.0 | 0 | 0.0 |
| SOUTHEAST FAIRBANKS CENSUS AREA | 0 | 0.0 | 1 | 62.4 * | 3 | 148.2 * | 7 | 109.1 * |
| VALDEZ-CORDOVA CENSUS AREA | 1 | 119.5 * | 4 | 164.5 * | 2 | 64.6 * | 6 | 62.6 * |
| WADE HAMPTON CENSUS AREA | 1 | 135.1 * | 7 | 343.3 * | 8 | 213.0 * | 25 | 229.1 |
| WRANGELL-PETERSBURG CENSUS AREA | 0 | 0.0 | 1 | 63.1 * | 1 | 49.7 * | 2 | 31.4 * |
| YAKUTAT BOROUGH | 0 | 0.0 | 0 | 0.0 | 0 | 0.0 | 0 | 0.0 |
| YUKON-KOYUKUK CENSUS AREA | 3 | 490.2 * | 7 | 385.5 * | 5 | 207.1 * | 12 | 164.1 |
| ALASKA | 53 | 102.7 | 177 | 117.9 | 186 | 88.0 | 516 | 81.8 |

Note: Statewide totals include deaths where the census area or borough of residence is unknown.

*Rates based on fewer than 10 occurrences are statistically unreliable and should be used with caution.
 Population estimates are not available for infants less than one year of age by census area, so deaths and death rates for this age group are not reported separately.
 Rates are per 100,000 population.

TABLE 13

CHILD AND ADOLESCENT DEATHS FOR ALASKA: 2001 AND 1999–2001,
BY NATIVE REGIONAL CORPORATION AND AGE GROUP

| NATIVE REGIONAL CORPORATION | 0–4 | | 5–9 | | 10–14 | | 15–19 | | 0–19 | |
|-----------------------------------|----------------|-----------------|----------------|-----------------|----------------|-----------------|----------------|-----------------|----------------|-----------------|
| | 2001 DEATHS | 99–01 DEATHS | 2001 DEATHS | 99–01 DEATHS | 2001 DEATHS | 99–01 DEATHS | 2001 DEATHS | 99–01 DEATHS | 2001 DEATHS | 99–01 DEATHS |
| AHTNA CORPORATION | 0 | 0 | 0 | 0 | 0 | 0 | 0 | 2 | 0 | 2 |
| ALEUT CORPORATION | 0 | 3 | 0 | 1 | 0 | 0 | 1 | 2 | 1 | 6 |
| ARCTIC SLOPE CORPORATION | 3 | 4 | 0 | 0 | 1 | 3 | 0 | 6 | 4 | 13 |
| BERING STRAITS NATIVE CORPORATION | 4 | 10 | 0 | 0 | 1 | 3 | 3 | 10 | 8 | 23 |
| BRISTOL BAY NATIVE CORPORATION | 2 | 10 | 0 | 1 | 2 | 2 | 2 | 8 | 6 | 21 |
| CALISTA CORPORATION | 16 | 43 | 2 | 6 | 1 | 3 | 5 | 16 | 24 | 68 |
| CHUGACH ALASKA CORPORATION | 1 | 2 | 0 | 0 | 0 | 0 | 2 | 3 | 3 | 5 |
| COOK INLET REGIONAL CORPORATION | 54 | 119 | 5 | 15 | 9 | 23 | 26 | 80 | 94 | 237 |
| DOYON LIMITED | 13 | 41 | 2 | 3 | 4 | 10 | 7 | 27 | 26 | 81 |
| KONIAG INCORPORATED | 3 | 4 | 0 | 0 | 0 | 0 | 3 | 5 | 6 | 9 |
| NANA REGIONAL CORPORATION | 2 | 7 | 0 | 1 | 1 | 1 | 3 | 9 | 6 | 18 |
| SEALASKA CORPORATION | 5 | 19 | 0 | 1 | 1 | 2 | 1 | 9 | 7 | 31 |
| ALASKA | 104 | 264 | 9 | 28 | 20 | 47 | 53 | 177 | 186 | 516 |

Rates are not calculated since population estimates by Native Regional Corporation and age group are not available.

TABLE 14 CHILD AND ADOLESCENT DEATHS FOR ALASKA: 2001 AND 1999-2001, BY SELECTED CAUSES OF DEATH AND AGE GROUP

| CAUSE OF DEATH | <1 | | | 1-4 | | | 5-9 | | | | | |
|---|---------------------------------|-----------|--------------|------------|-------------|-----------|--------------|------------|-------------|-----------|--------------|------------|
| | 2001 DEATHS | 2001 RATE | 99-01 DEATHS | 99-01 RATE | 2001 DEATHS | 2001 RATE | 99-01 DEATHS | 99-01 RATE | 2001 DEATHS | 2001 RATE | 99-01 DEATHS | 99-01 RATE |
| | NATURAL CAUSES (A00-R99) | 1 | 9.8* | 3 | 10.1* | 0 | 0.0 | 5 | 4.2* | 2 | 3.8* | 2 |
| INFECTIOUS AND PARASITIC DISEASES (A00-B99) | 0 | 0.0 | 0 | 0.0 | 1 | 2.5* | 4 | 3.3* | 0 | 0.0 | 2 | 1.2* |
| MALIGNANT NEOPLASMS (C00-C97) | 1 | 9.8* | 1 | 3.4* | 0 | 0.0 | 1 | 0.8* | 0 | 0.0 | 0 | 0.0 |
| HEART DISEASE (I00-I09,I11,I13,I20-I51) | 0 | 0.0 | 1 | 3.4* | 0 | 0.0 | 0 | 0.0 | 0 | 0.0 | 0 | 0.0 |
| CEREBROVASCULAR DISEASE (I60-I69) | 2 | 19.6* | 6 | 20.2* | 0 | 0.0 | 0 | 0.0 | 0 | 0.0 | 0 | 0.0 |
| PNEUMONIA (J12-J18) | 0 | 0.0 | 0 | 0.0 | 0 | 0.0 | 2 | 1.7* | 0 | 0.0 | 0 | 0.0 |
| CHRONIC LOWER RESPIRATORY DISEASE (J40-J47) | 4 | 39.3* | 4 | 13.4* | 0 | 0.0 | 1 | 0.8* | 0 | 0.0 | 0 | 0.0 |
| OTHER RESPIRATORY DISEASE | 24 | 235.5 | 60 | 201.6 | 0 | 0.0 | 0 | 0.0 | 0 | 0.0 | 0 | 0.0 |
| PERINATAL CONDITIONS (P00-P96) | 13 | 127.6 | 42 | 141.1 | 2 | 5.0* | 4 | 3.3* | 1 | 1.9* | 4 | 2.5* |
| CONGENITAL MALFORMATIONS (Q00-Q99) | 10 | 98.1 | 30 | 100.8 | 0 | 0.0 | 0 | 0.0 | 0 | 0.0 | 0 | 0.0 |
| SIDS (R95) | 6 | 58.9* | 15 | 50.4 | 8 | 20.2* | 10 | 8.4 | 2 | 3.8* | 4 | 2.5* |
| ALL OTHER NATURAL CAUSES | 61 | 598.6 | 162 | 544.2 | 11 | 27.7 | 27 | 22.6 | 5 | 9.5* | 12 | 7.4 |
| UNINTENTIONAL INJURY (V01-X59,Y85-Y86) | 1 | 9.8* | 3 | 10.1* | 1 | 2.5* | 7 | 5.8* | 2 | 3.8* | 5 | 3.1* |
| MOTOR VEHICLE (**) | 0 | 0.0 | 0 | 0.0 | 0 | 0.0 | 0 | 0.0 | 0 | 0.0 | 0 | 0.0 |
| WATER TRANSPORT (V90-V94) | 0 | 0.0 | 0 | 0.0 | 0 | 0.0 | 0 | 0.0 | 0 | 0.0 | 0 | 0.0 |
| AIR TRANSPORT (V95-V97) | 0 | 0.0 | 0 | 0.0 | 0 | 0.0 | 0 | 0.0 | 0 | 0.0 | 0 | 0.0 |
| OTHER TRANSPORT ACCIDENTS | 0 | 0.0 | 0 | 0.0 | 0 | 0.0 | 0 | 0.0 | 0 | 0.0 | 0 | 0.0 |
| FALLS (W00-W19) | 0 | 0.0 | 0 | 0.0 | 0 | 0.0 | 0 | 0.0 | 0 | 0.0 | 0 | 0.0 |
| ACCIDENTAL DISCHARGE OF FIREARMS (W32-W34) | 2 | 19.6* | 2 | 6.7* | 3 | 7.6* | 5 | 4.2* | 1 | 0.8* | 1 | 0.6* |
| DROWNING (W65-W74) | 0 | 0.0 | 0 | 0.0 | 0 | 0.0 | 2 | 1.7* | 0 | 0.0 | 0 | 0.0 |
| EXPOSURE TO SMOKE, FIRE, AND FLAMES (X00-X09) | 0 | 0.0 | 0 | 0.0 | 1 | 2.5* | 2 | 1.7* | 0 | 0.0 | 1 | 0.6* |
| POISONING (X40-X49) | 0 | 0.0 | 0 | 0.0 | 0 | 0.0 | 3 | 2.5* | 0 | 0.0 | 1 | 0.6* |
| ALL OTHER UNINTENTIONAL INJURIES | 13 | 127.6 | 18 | 60.5 | 1 | 2.5* | 3 | 2.5* | 0 | 0.0 | 2 | 1.2* |
| TOTAL UNINTENTIONAL INJURY | 16 | 157.0 | 23 | 77.3 | 7 | 17.6* | 21 | 17.5 | 3 | 5.7* | 13 | 8.0 |
| INTENTIONAL INJURIES (X60-Y09,Y870-Y871) | 0 | 0.0 | 0 | 0.0 | 0 | 0.0 | 0 | 0.0 | 0 | 0.0 | 0 | 0.0 |
| INTENTIONAL SELF-HARM (SUICIDE) (X60-X84,Y870) | 0 | 0.0 | 0 | 0.0 | 0 | 0.0 | 0 | 0.0 | 0 | 0.0 | 0 | 0.0 |
| SUICIDE BY DISCHARGE OF FIREARMS (X72-X74) | 0 | 0.0 | 0 | 0.0 | 0 | 0.0 | 0 | 0.0 | 0 | 0.0 | 0 | 0.0 |
| SUICIDE BY OTHER AND UNSPECIFIED MEANS | 0 | 0.0 | 0 | 0.0 | 0 | 0.0 | 0 | 0.0 | 0 | 0.0 | 0 | 0.0 |
| TOTAL INTENTIONAL SELF-HARM (SUICIDE) | 0 | 0.0 | 0 | 0.0 | 0 | 0.0 | 0 | 0.0 | 0 | 0.0 | 0 | 0.0 |
| ASSAULT (X85-Y09,Y871) | 2 | 19.6* | 3 | 10.1* | 2 | 5.0* | 4 | 3.3* | 1 | 1.9* | 3 | 1.9* |
| ASSAULT BY DISCHARGE OF FIREARMS (X93-X95) | 1 | 9.8* | 7 | 23.5* | 0 | 0.0 | 3 | 2.5* | 0 | 0.0 | 0 | 0.0 |
| ASSAULT BY OTHER AND UNSPECIFIED MEANS | 3 | 29.4* | 10 | 33.6 | 2 | 5.0* | 7 | 5.8* | 1 | 1.9* | 3 | 1.9* |
| TOTAL ASSAULT | 3 | 29.4* | 10 | 33.6 | 2 | 5.0* | 7 | 5.8* | 1 | 1.9* | 3 | 1.9* |
| TOTAL INTENTIONAL INJURIES | 0 | 0.0 | 0 | 0.0 | 0 | 0.0 | 0 | 0.0 | 0 | 0.0 | 0 | 0.0 |
| LEGAL INTERVENTION (Y35,Y890) | 0 | 0.0 | 0 | 0.0 | 0 | 0.0 | 0 | 0.0 | 0 | 0.0 | 0 | 0.0 |
| UNDETERMINED INTENT (Y10-Y34,Y872,Y899) | 0 | 0.0 | 0 | 0.0 | 0 | 0.0 | 0 | 0.0 | 0 | 0.0 | 0 | 0.0 |
| DISCHARGE OF FIREARMS, UNKNOWN INTENT (Y22-Y24) | 3 | 29.4* | 10 | 33.6 | 0 | 0.0 | 3 | 2.5* | 0 | 0.0 | 0 | 0.0 |
| OTHER UNDETERMINED INTENT | 3 | 29.4* | 10 | 33.6 | 1 | 2.5* | 4 | 3.3* | 0 | 0.0 | 0 | 0.0 |
| TOTAL UNDETERMINED INTENT | 0 | 0.0 | 0 | 0.0 | 1 | 2.5* | 1 | 0.8* | 0 | 0.0 | 0 | 0.0 |
| COMPLICATIONS OF MEDICAL CARE (Y40-Y84,Y88) | 83 | 814.5 | 205 | 688.7 | 21 | 52.9 | 59 | 49.3 | 9 | 17.1* | 28 | 17.3 |
| TOTAL DEATHS | | | | | | | | | | | | |

* Rates based on fewer than 10 occurrences are statistically unreliable and should be used with caution.

** V02-V04,Y090,Y092,V12-V14,V190-V192,V194-V196,V20-V79,V803-V805,V810-V811,V820-V821,V833-V834,V835-V836,V837-V838,V839-V840,V841-V842,V843-V844,V845-V846,V847-V848,V849-V850,V851-V852,V853-V854,V855-V856,V857-V858,V859-V860,V861-V862,V863-V864,V865-V866,V867-V868,V869-V870,V871-V872,V873-V874,V875-V876,V877-V878,V879-V880,V881-V882,V883-V884,V885-V886,V887-V888,V889-V890,V891-V892,V893-V894,V895-V896,V897-V898,V899-V900,V901-V902,V903-V904,V905-V906,V907-V908,V909-V910,V911-V912,V913-V914,V915-V916,V917-V918,V919-V920,V921-V922,V923-V924,V925-V926,V927-V928,V929-V930,V931-V932,V933-V934,V935-V936,V937-V938,V939-V940,V941-V942,V943-V944,V945-V946,V947-V948,V949-V950,V951-V952,V953-V954,V955-V956,V957-V958,V959-V960,V961-V962,V963-V964,V965-V966,V967-V968,V969-V970,V971-V972,V973-V974,V975-V976,V977-V978,V979-V980,V981-V982,V983-V984,V985-V986,V987-V988,V989-V990,V991-V992,V993-V994,V995-V996,V997-V998,V999-V1000

TABLE 14 CHILD AND ADOLESCENT DEATHS FOR ALASKA: 2001 AND 1999-2001, BY SELECTED CAUSES OF DEATH AND AGE GROUP

| CAUSE OF DEATH | 10-14 | | | 15-19 | | | 0-19 | | | | | |
|--|--------|-------|--------|-------|--------|--------|--------|-------|--------|-------|-----|-------|
| | 2001 | 99-01 | 99-01 | 2001 | 99-01 | 99-01 | 2001 | 99-01 | 99-01 | | | |
| | DEATHS | RATE | DEATHS | RATE | DEATHS | RATE | DEATHS | RATE | DEATHS | | | |
| NATURAL CAUSES (A00-R99) | | | | | | | | | | | | |
| INFECTIOUS AND PARASITIC DISEASES (A00-B99) | 1 | 1.7 * | 1 | 0.6 * | 0 | 0.0 | 0 | 0.0 | 4 | 1.9 * | 11 | 1.7 |
| MALIGNANT NEOPLASMS (C00-C97) | 0 | 0.0 | 2 | 1.2 * | 3 | 5.8 * | 8 | 5.3 * | 4 | 1.9 * | 16 | 2.5 |
| HEART DISEASE (I00-I09,I11,I13,I20-I51) | 2 | 3.5 * | 2 | 1.2 * | 0 | 0.0 | 1 | 0.7 * | 3 | 1.4 * | 5 | 0.8 * |
| CEREBROVASCULAR DISEASE (I60-I69) | 0 | 0.0 | 0 | 0.0 | 0 | 0.0 | 0 | 0.0 | 0 | 0.0 | 1 | 0.2 * |
| PNEUMONIA (J12-J18) | 0 | 0.0 | 1 | 0.6 * | 0 | 0.0 | 3 | 2.0 * | 2 | 0.9 * | 10 | 1.6 |
| CHRONIC LOWER RESPIRATORY DISEASE (J40-J47) | 0 | 0.0 | 0 | 0.0 | 0 | 0.0 | 0 | 0.0 | 0 | 0.0 | 2 | 0.3 * |
| OTHER RESPIRATORY DISEASE | 0 | 0.0 | 0 | 0.0 | 0 | 0.0 | 0 | 0.0 | 4 | 1.9 * | 5 | 0.8 * |
| PERINATAL CONDITIONS (P00-P96) | 0 | 0.0 | 0 | 0.0 | 0 | 0.0 | 0 | 0.0 | 24 | 11.4 | 60 | 9.5 |
| CONGENITAL MALFORMATIONS (Q00-Q99) | 1 | 1.7 * | 1 | 0.6 * | 1 | 1.9 * | 3 | 2.0 * | 18 | 8.5 | 54 | 8.6 |
| SIDS (R95) | 0 | 0.0 | 0 | 0.0 | 0 | 0.0 | 0 | 0.0 | 10 | 4.7 | 30 | 4.8 |
| ALL OTHER NATURAL CAUSES | 1 | 1.7 * | 4 | 2.4 * | 7 | 13.6 * | 14 | 9.3 | 24 | 11.4 | 47 | 7.4 |
| TOTAL NATURAL CAUSES | 5 | 8.7 * | 11 | 6.5 | 11 | 21.3 | 29 | 19.3 | 93 | 44.0 | 241 | 38.2 |
| UNINTENTIONAL INJURY (V01-X59,Y85-Y86) | | | | | | | | | | | | |
| MOTOR VEHICLE (**) | 4 | 7.0 * | 9 | 5.3 * | 13 | 25.2 | 48 | 32.0 | 21 | 9.9 | 72 | 11.4 |
| WATER TRANSPORT (V90-V94) | 0 | 0.0 | 1 | 0.6 * | 2 | 3.9 * | 3 | 2.0 * | 2 | 0.9 * | 4 | 0.6 * |
| AIR TRANSPORT (V95-V97) | 0 | 0.0 | 0 | 0.0 | 1 | 1.9 * | 3 | 2.0 * | 1 | 0.5 * | 3 | 0.5 * |
| OTHER TRANSPORT ACCIDENTS | 0 | 0.0 | 0 | 0.0 | 0 | 0.0 | 1 | 0.7 * | 0 | 0.0 | 1 | 0.2 * |
| FALLS (W00-W19) | 1 | 1.7 * | 1 | 0.6 * | 0 | 0.0 | 1 | 0.7 * | 1 | 0.5 * | 2 | 0.3 * |
| ACCIDENTAL DISCHARGE OF FIREARMS (W32-W34) | 0 | 0.0 | 0 | 0.0 | 1 | 1.9 * | 2 | 1.3 * | 1 | 0.5 * | 4 | 0.6 * |
| DROWNING (W65-W74) | 1 | 1.7 * | 5 | 3.0 * | 3 | 5.8 * | 8 | 5.3 * | 10 | 4.7 | 23 | 3.6 |
| EXPOSURE TO SMOKE, FIRE, AND FLAMES (X00-X09) | 0 | 0.0 | 2 | 1.2 * | 0 | 0.0 | 1 | 0.7 * | 1 | 0.5 * | 6 | 1.0 * |
| POISONING (X40-X49) | 3 | 5.2 * | 3 | 1.8 * | 2 | 3.9 * | 4 | 2.7 * | 6 | 2.8 * | 11 | 1.7 |
| ALL OTHER UNINTENTIONAL INJURIES | 1 | 1.7 * | 3 | 1.8 * | 1 | 1.9 * | 6 | 4.0 * | 16 | 7.6 | 32 | 5.1 |
| TOTAL UNINTENTIONAL INJURY | 10 | 17.5 | 24 | 14.2 | 23 | 44.6 | 77 | 51.3 | 59 | 27.9 | 158 | 25.0 |
| INTENTIONAL INJURIES (X60-Y09,Y870-Y871) | | | | | | | | | | | | |
| INTENTIONAL SELF-HARM (SUICIDE) (X60-X84,Y870) | 4 | 7.0 * | 7 | 4.1 * | 16 | 31.0 | 57 | 38.0 | 20 | 9.5 | 64 | 10.1 |
| SUICIDE BY DISCHARGE OF FIREARMS (X72-X74) | 3 | 5.2 * | 5 | 3.0 * | 8 | 15.5 * | 37 | 24.6 | 11 | 5.2 | 42 | 6.7 |
| SUICIDE BY OTHER AND UNSPECIFIED MEANS | 1 | 1.7 * | 2 | 1.2 * | 8 | 15.5 * | 20 | 13.3 | 9 | 4.3 * | 22 | 3.5 |
| TOTAL INTENTIONAL SELF-HARM (SUICIDE) | 4 | 7.0 * | 7 | 4.1 * | 16 | 31.0 | 57 | 38.0 | 20 | 9.5 | 64 | 10.1 |
| ASSAULT (X85-Y09,Y871) | | | | | | | | | | | | |
| ASSAULT BY DISCHARGE OF FIREARMS (X93-X95) | 1 | 1.7 * | 1 | 0.6 * | 1 | 1.9 * | 7 | 4.7 * | 7 | 3.3 * | 18 | 2.9 |
| ASSAULT BY OTHER AND UNSPECIFIED MEANS | 0 | 0.0 | 2 | 1.2 * | 1 | 1.9 * | 1 | 0.7 * | 2 | 0.9 * | 13 | 2.1 |
| TOTAL ASSAULT | 1 | 1.7 * | 3 | 1.8 * | 2 | 3.9 * | 8 | 5.3 * | 9 | 4.3 * | 31 | 4.9 |
| TOTAL INTENTIONAL INJURIES | 5 | 8.7 * | 10 | 5.9 | 18 | 34.9 | 65 | 43.3 | 29 | 13.7 | 95 | 15.1 |
| LEGAL INTERVENTION (Y35,Y890) | 0 | 0.0 | 0 | 0.0 | 0 | 0.0 | 1 | 0.7 * | 0 | 0.0 | 1 | 0.2 * |
| UNDETERMINED INTENT (Y10-Y34,Y872,Y899) | | | | | | | | | | | | |
| DISCHARGE OF FIREARMS, UNKNOWN INTENT (Y22-Y24) | 0 | 0.0 | 0 | 0.0 | 1 | 1.9 * | 3 | 2.0 * | 1 | 0.5 * | 3 | 0.5 * |
| OTHER UNDETERMINED INTENT | 0 | 0.0 | 0 | 0.0 | 0 | 0.0 | 1 | 0.7 * | 3 | 1.4 * | 14 | 2.2 |
| TOTAL UNDETERMINED INTENT | 0 | 0.0 | 1 | 0.6 * | 1 | 1.9 * | 4 | 2.7 * | 5 | 2.4 * | 19 | 3.0 |
| COMPLICATIONS OF MEDICAL CARE (Y40-Y84,Y88) | 0 | 0.0 | 1 | 0.6 * | 0 | 0.0 | 0 | 0.0 | 1 | 0.5 * | 2 | 0.3 * |
| TOTAL DEATHS | 20 | 35.0 | 47 | 27.8 | 53 | 102.7 | 177 | 117.9 | 186 | 88.0 | 516 | 81.8 |

* Rates based on fewer than 10 occurrences, are statistically unreliable and should be used with caution.

** V02-V04,V090,V092,V12-V14,V190-V192,V194-V196,V20-V79,V803-V805,V810-V811,V820-V821,V83-V86,V870-V878,V880-V888,V890,V892