

BIRTHS



"The Embrace"
Copyright Rie Munoz, Ltd.

INTRODUCTION

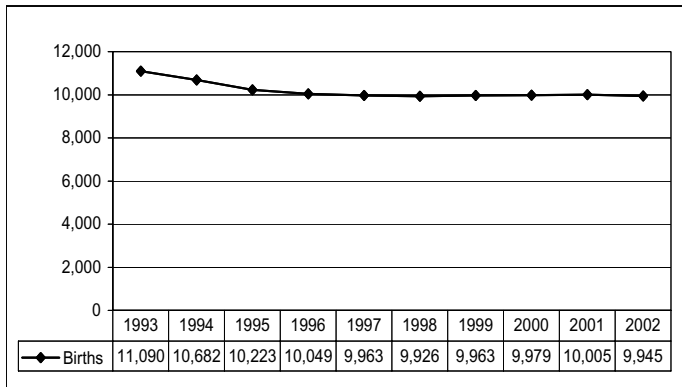
The Alaska birth certificate provides information about each baby born in Alaska, regardless of the mother's residence state. Through a vital statistics cooperative agreement, birth information is also collected for Alaska mothers who have a baby in another state. Thus, the Bureau of Vital Statistics Information System contains records on all births occurring in the state and all births to residents of Alaska.

The birth certificate contains information about the mother, the father, the pregnancy, and the child. Birth information is collected in hospitals and birth centers

from worksheets completed by parents or medical staff, from medical charts, or by a combination of these sources. Midwives and family members who deliver a baby collect the birth information from their records or from a parent and complete the birth certificate.

This chapter reports information from the birth certificate such as pregnancy history, parents' education, prenatal care, mother's health risk behaviors, and birth weight, which can be used to monitor and help improve the health of mothers and children.

FIGURE 1 ALASKA RESIDENT BIRTHS, 1993–2002



There were 9,945 live births to Alaska residents in 2002 (Figure 1). This is a decrease of 0.6 percent from the 10,005 births recorded in 2001. Of these births, 5,057 were boys and 4,888 were girls. Of the 9,945 births in 2002, there were 114 sets of twins.

The natural increase in Alaska’s population (the increase of births over deaths) was 6,912 persons, representing a natural increase rate of 10.7 persons per 1,000 population. This is a 3.6 percent decrease from the natural increase rate of 11.1 recorded in 2001.

The 2002 crude birth rate of 15.4 per 1,000 population represents a 2.5 percent decrease from the 2001 crude birth rate of 15.8, and a 17.2 percent decrease from the crude birth rate of 18.6 per 1,000 population recorded in 1993. The 2002 crude birth rate for the United States was 13.9 live births per 1,000 population¹, which is a decline of 10.3 percent from the rate of 15.5 in 1993.

FIGURE 2 CRUDE BIRTH RATES: U.S. AND ALASKA, 1993–2002

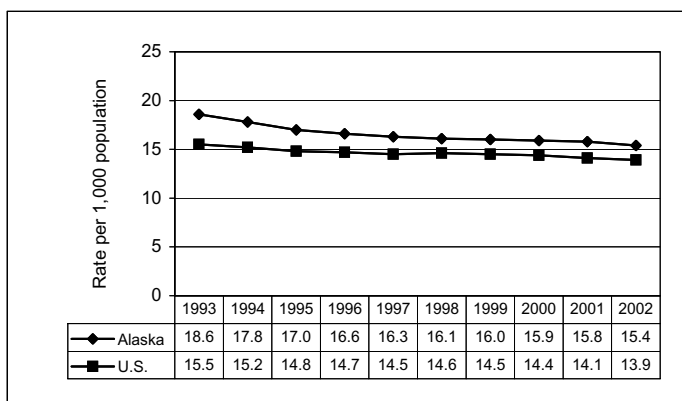
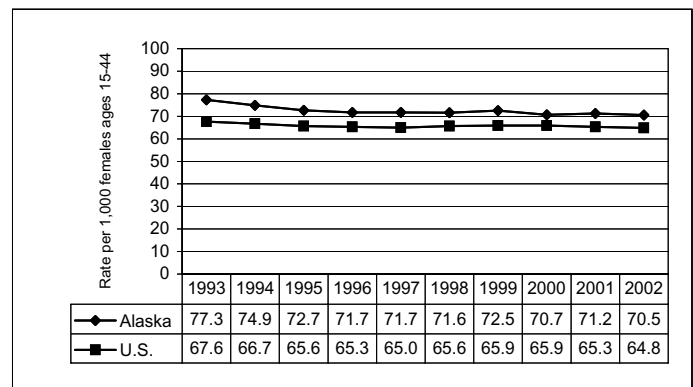


FIGURE 3 FERTILITY RATES: U.S. AND ALASKA, 1993–2002

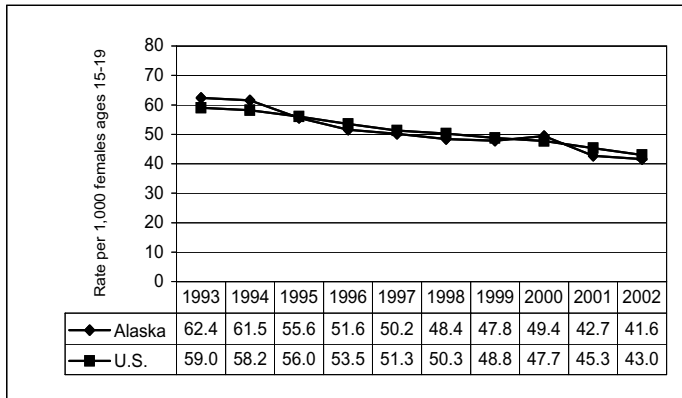


In order to calculate crude birth rates (Figure 2), fertility rates, or any of the other rates used in this report, population estimates must be used. Population estimates are provided by the Department of Labor, Research and Analysis Section, Demographics Unit. Due to the way race information was collected beginning with the 2000 census, previous population estimates are not comparable to current estimates. The Department of Labor has developed smoothed bridge estimates so that population estimates by race made after 2000 are comparable to previous estimates. When reporting rates by race, this report uses smoothed bridge estimates. Please refer to Appendix I for the population estimates used in this report. Furthermore, in order to make a seamless transition from 1990s population estimates to the 2000 Census, the Department of Labor has revised population estimates produced during the 1990s.

The fertility rate (Figure 3) is a more meaningful measure of behavioral patterns than the crude birth rate since it is a measure of the number of births compared to the number of women of usual child-bearing age (15-44 years). The 2002 fertility rate for Alaska was 70.5 births per 1,000 women, representing a 1.0 percent decrease from the 2001 fertility rate of 71.2. Alaska’s fertility rate was 8.8 percent higher than the U.S. fertility rate of 64.8 in 2002.

¹National Center for Health Statistics, U.S. Department of Health and Human Services, “Births: Final Data for 2002,” National Vital Statistics Report, Vol. 52, No. 10, December 17, 2003.

FIGURE 4 TEEN BIRTH RATES: U.S. AND ALASKA, 1993–2002



The 2002 teen (ages 15-19) birth rate for Alaska was 41.6, which is 3.3 percent below the 2002 U.S. teen birth rate of 43.0 (Figure 4). Alaska’s 2002 teen birth rate reflects a decrease of 2.6 percent from the 2001 rate of 42.7. Since 1993, the teen birth rate in Alaska has declined by one-third (33.3 percent).

FIGURE 5 PERCENTAGE OF LOW BIRTH WEIGHT INFANTS: U.S. AND ALASKA, 1993–2002

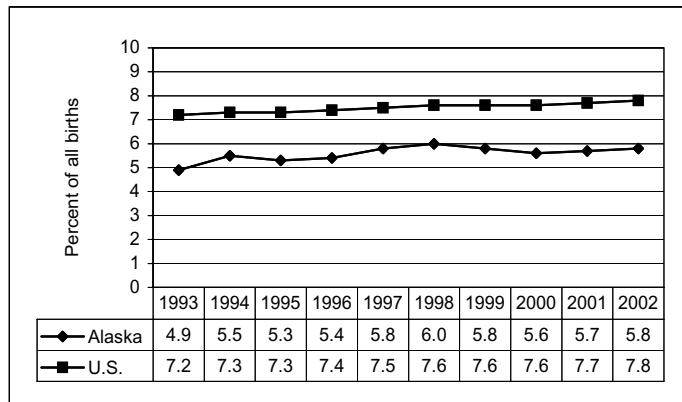
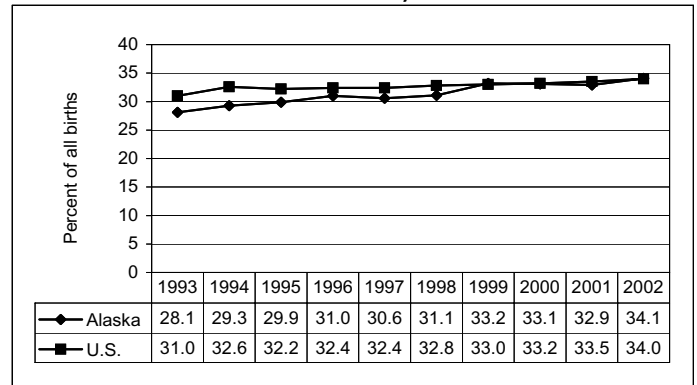


FIGURE 6 PERCENTAGE OF UNWED MOTHERS: U.S. AND ALASKA, 1993–2002



Low birth weight [live births that weigh less than 2,500 grams (5 pounds, 8 ounces)] is an important predictor of infant death. Infants born with low birth weight also are more likely to need extensive medical treatment. The incidence of low birth weight (Figure 5) babies born in Alaska during 2002 was 5.8 percent of total live births, a slight increase (1.8 percent) from the 5.7 percent reported in 2001. Although the incidence of low birth weight births has been increasing for both Alaska and the U.S. over the last decade, the Alaska low birth weight rate is 25.6 percent lower than the U.S. rate.

Of the total births to Alaska residents during 2002, 34.1 percent were to unmarried women (Figure 6). This is an increase of 3.6 percent over the 32.9 percent reported for Alaska in 2001.

The most popular boy’s name in 2002 was Jacob and the most popular girl’s name was Madison. Figure 7 below shows the ten most popular boys’ and girls’ names for the years 1992, 1997, and 2002.

FIGURE 7 MOST POPULAR BOYS’ AND GIRLS’ NAMES: ALASKA, 1992, 1997, AND 2002

RANK	BOYS' NAMES			GIRLS' NAMES		
	1992	1997	2002	1992	1997	2002
1	Michael	Jacob	Jacob	Jessica	Hannah	Madison
2	Christopher	James	Joshua	Ashley	Emily	Emily
3	Tyler	Michael	Michael	Amanda	Sarah	Elizabeth
4	Matthew	Joshua	Ethan	Sarah	Megan	Emma
5	Joshua	Brandon	Tyler	Samantha	Ashley	Ashley
6	Daniel	Joseph	Joseph	Emily	Samantha	Alexis
7	Jacob	John	James	Elizabeth	Taylor	Hannah
8	James	Tyler	Dylan	Brittany	Jessica	Olivia
9	Andrew	Christopher	Matthew	Stephanie	Madison	Jasmine
10	Robert	Zachary	Benjamin	Chelsea	Alyssa	Samantha

BIRTHS BY RESIDENCE AND RACE

The following tables of this chapter show annual occurrences of live births to Alaska residents during 2002 and for the three-year period 2000 through 2002.

Annual rates and three-year rates for the state as a whole, its 27 census areas, and 12 Native Regional Corporations are shown by race and residence of the mother. Natality statistics on the mother's age, marital status, education, birth facility, prenatal care, cesarean delivery, pre-term births, and low birth weight are presented.

The table for the statewide totals (Table 1) provides birth statistics for the white, black, Native, and Asian/Pacific Islander races. However, due to the low number of reportable events for some census areas or boroughs, birth outcomes by census area (borough) and Native Regional Corporation are only shown for the two predominant races in Alaska: Native and white.

Also, unknown values are not reported in these tables. Thus, the percentages for certain categories such as mother's age group may not add up to the total number of births.

Since female population estimates are not available by race for individual census areas, fertility rates and teen birth rates cannot be calculated for these tables (Table 2 and Table 3). Furthermore, due to the way race information was collected in the Federal 2000 Census, population estimates by race beginning in 2000 are not comparable to previous population estimates. The Alaska Department of Labor has developed bridge estimates so that the Federal population estimates by race in 2000 and later years will be comparable to previous years. Currently, bridge estimates by census area by race are not available. When bridge estimates by census area by race are published, the online Annual Report will be updated. The following Web address is for the online Annual Report:

www.hss.state.ak.us/dph/bvs/publications/default.htm.

TABLE 1 **SELECTED BIRTH STATISTICS REPORTED BY MOTHER'S RACE:**
ALASKA, 2002 AND 2000-2002

	TOTAL				WHITE				NATIVE			
	2002 NUMBER	2002 RATE*	2000-2002 NUMBER	2000-2002 RATE*	2002 NUMBER	2002 RATE*	2000-2002 NUMBER	2000-2002 RATE*	2002 NUMBER	2002 RATE*	2000-2002 NUMBER	2000-2002 RATE*
BIRTH RATES (1)												
CRUDE BIRTH RATE	9,945	15.4	29,929	15.7	6,270	13.8	18,881	13.8	2,399	21.1	7,350	21.9
TEEN BIRTH RATE												
15-17	318	19.7	1,000	21.0	135		392		146		472	
18-19	750	79.0	2,287	87.0	380		1,164		271		841	
15-19	1,068	41.6	3,287	44.5	515	30.4	1,556	31.5	417	74.3	1,313	81.7
FERTILITY RATE	9,945	70.5	29,929	70.8	6,270	64.1	18,881	63.3	2,399	94.9	7,350	98.1
	TOTAL				WHITE				NATIVE			
	2002 NUMBER	2002 %	2000-2002 NUMBER	2000-2002 %	2002 NUMBER	2002 %	2000-2002 NUMBER	2000-2002 %	2002 NUMBER	2002 %	2000-2002 NUMBER	2000-2002 %
BIRTHS												
IN STATE	9,855	100.0	29,647	100.0	6,197	62.9	18,653	62.9	2,397	24.3	7,346	24.8
TO RESIDENTS	9,945	100.0	29,929	100.0	6,270	63.0	18,881	63.1	2,399	24.1	7,350	24.6
FACILITY												
HOSPITAL	9,387	94.4	28,254	94.4	5,775	92.1	17,429	92.3	2,371	98.8	7,253	98.7
BIRTHING CENTER	286	2.9	869	2.9	265	4.2	798	4.2	11	0.5	34	0.5
HOME	152	1.5	426	1.4	140	2.2	383	2.0	6	0.3	17	0.2
CLINIC	11	0.1	51	0.2	6	0.1	19	0.1	4	0.2	30	0.4
OUTSIDE ALASKA	109	1.1	329	1.1	84	1.3	252	1.3	7	0.3	16	0.2
MOTHER CHARACTERISTICS												
AGE GROUP												
<15	16	0.2	45	0.2	7	0.1	19	0.1	7	0.3	18	0.2
15-19	1,068	10.8	3,287	11.0	515	8.2	1,556	8.2	417	17.4	1,313	17.9
20-24	2,828	28.5	8,306	27.8	1,715	27.4	4,977	26.4	745	31.1	2,292	31.2
25-29	2,611	26.3	7,979	26.7	1,672	26.7	5,194	27.5	618	25.8	1,835	25.0
30-34	2,061	20.7	6,187	20.7	1,425	22.8	4,286	22.7	362	15.1	1,107	15.1
35-39	1,044	10.5	3,232	10.8	705	11.3	2,221	11.8	200	8.3	629	8.6
40-44	294	3.0	840	2.8	212	3.4	588	3.1	48	2.0	149	2.0
45+	11	0.1	35	0.1	9	0.1	25	0.1	1	0.0	6	0.1
REPORTED DRINKING	251	2.6	775	2.6	99	1.6	310	1.7	137	5.8	426	5.9
REPORTED SMOKING	1,768	18.0	5,327	18.0	824	13.2	2,531	13.5	839	35.1	2,476	34.0
UNWED	3,379	34.1	9,953	33.4	1,491	23.8	4,367	23.2	1,446	60.3	4,307	58.8
EDUCATION												
<12 YEARS	1,375	14.5	4,050	14.1	589	9.8	1,684	9.2	650	27.9	1,924	27.1
12 YEARS	4,125	43.6	12,655	43.9	2,317	38.4	7,209	39.2	1,292	55.4	3,983	56.1
12+ YEARS	3,971	41.9	12,107	42.0	3,123	51.8	9,502	51.7	391	16.8	1,193	16.8
PRENATAL CARE												
TRIMESTER CARE BEGAN												
1ST TRIMESTER	7,650	80.5	23,241	80.6	5,113	84.4	15,527	84.6	1,619	70.2	5,021	70.9
3RD TRIMESTER	404	4.2	1,194	4.1	210	3.5	541	2.9	148	6.4	510	7.2
NO PRENATAL CARE	44	0.5	133	0.5	21	0.4	54	0.3	16	0.7	60	0.9
APNCU INDEX												
ADEQUATE+	2,208	24.5	6,926	25.1	1,520	26.7	4,754	27.2	417	18.4	1,362	19.5
ADEQUATE	3,568	39.6	11,322	41.0	2,519	44.3	7,948	45.5	636	28.1	2,094	30.0
INTERMEDIATE	1,766	19.6	5,038	18.2	989	17.4	2,827	16.2	565	24.9	1,581	22.6
INADEQUATE	1,461	16.2	4,340	15.7	657	11.6	1,921	11.0	649	28.6	1,948	27.9
KESSNER INDEX												
ADEQUATE	6,082	67.4	18,976	68.5	4,323	75.9	13,337	76.3	1,045	46.1	3,461	49.5
INTERMEDIATE	2,491	27.6	7,379	26.7	1,142	20.0	3,546	20.3	1,060	46.7	2,966	42.4
INADEQUATE	448	5.0	1,327	4.8	231	4.1	595	3.4	164	7.2	570	8.1
C-SECTION BIRTHS	1,926	19.6	5,509	18.7	1,364	22.0	3,900	21.0	267	11.2	807	11.1
PRE-TERM BIRTHS	973	9.8	2,992	10.0	516	8.3	1,613	8.6	299	12.6	923	12.6
LOW BIRTHWEIGHT	577	5.8	1,700	5.7	316	5.1	943	5.0	142	5.9	428	5.9

Continued =>

Note: Unknown responses are excluded from the denominator when calculating percentages.

(1) Rate per 1,000 population.

* Rates based on fewer than 10 occurrences are statistically unreliable and should be used with caution.

** Data suppressed for confidentiality concerns if total births to residents, by race, is less than five observations.

TABLE 1 **SELECTED BIRTH STATISTICS REPORTED BY MOTHER'S RACE:**
ALASKA, 2002 AND 2000-2002 (Continued)

	TOTAL				BLACK				ASIAN/PI			
	2002 NUMBER	2002 RATE*	2000-2002 NUMBER	2000-2002 RATE*	2002 NUMBER	2002 RATE*	2000-2002 NUMBER	2000-2002 RATE*	2002 NUMBER	2002 RATE*	2000-2002 NUMBER	2000-2002 RATE*
BIRTH RATES (1)												
CRUDE BIRTH RATE	9,945	15.4	29,929	15.7	427	12.3	1,328	15.4	686	16.2	1,953	16.5
TEEN BIRTH RATE												
15-17	318	19.7	1,000	21.0	11		66		22		57	
18-19	750	79.0	2,287	87.0	46		139		38		119	
15-19	1,068	41.6	3,287	44.5	57	49.1	205	63.2	60	30.5	176	33.5
FERTILITY RATE	9,945	70.5	29,929	70.8	427	63.1	1,328	70.8	686	61.3	1,953	63.4
	TOTAL				BLACK				ASIAN/PI			
	2002 NUMBER	2002 %	2000-2002 NUMBER	2000-2002 %	2002 NUMBER	2002 %	2000-2002 NUMBER	2000-2002 %	2002 NUMBER	2002 %	2000-2002 NUMBER	2000-2002 %
BIRTHS												
IN STATE	9,855	100.0	29,647	100.0	427	4.3	1,327	4.5	679	6.9	1,934	6.5
TO RESIDENTS	9,945	100.0	29,929	100.0	427	4.3	1,328	4.4	686	6.9	1,953	6.5
FACILITY												
HOSPITAL	9,387	94.4	28,254	94.4	424	99.3	1,309	98.6	666	97.1	1,888	96.7
BIRTHING CENTER	286	2.9	869	2.9	0	0.0	4	0.3	7	1.0	26	1.3
HOME	152	1.5	426	1.4	1	0.2	6	0.5	4	0.6	16	0.8
CLINIC	11	0.1	51	0.2	0	0.0	0	0.0	1	0.1	1	0.1
OUTSIDE ALASKA	109	1.1	329	1.1	2	0.5	9	0.7	8	1.2	22	1.1
MOTHER CHARACTERISTICS												
AGE GROUP												
<15	16	0.2	45	0.2	0	0.0	3	0.2	2	0.3	4	0.2
15-19	1,068	10.8	3,287	11.0	57	13.4	205	15.5	60	8.7	176	9.0
20-24	2,828	28.5	8,306	27.8	167	39.2	477	36.0	164	23.9	466	23.9
25-29	2,611	26.3	7,979	26.7	88	20.7	326	24.6	193	28.1	524	26.8
30-34	2,061	20.7	6,187	20.7	75	17.6	212	16.0	164	23.9	484	24.8
35-39	1,044	10.5	3,232	10.8	35	8.2	84	6.3	77	11.2	225	11.5
40-44	294	3.0	840	2.8	4	0.9	17	1.3	25	3.6	72	3.7
45+	11	0.1	35	0.1	0	0.0	2	0.2	1	0.1	2	0.1
REPORTED DRINKING	251	2.6	775	2.6	4	0.9	15	1.1	10	1.5	19	1.0
REPORTED SMOKING	1,768	18.0	5,327	18.0	30	7.1	114	8.6	56	8.3	150	7.8
UNWED	3,379	34.1	9,953	33.4	185	43.5	591	44.6	195	28.6	546	28.1
EDUCATION												
<12 YEARS	1,375	14.5	4,050	14.1	40	9.8	146	11.4	81	13.0	262	14.2
12 YEARS	4,125	43.6	12,655	43.9	209	51.1	617	48.1	268	43.0	765	41.5
12+ YEARS	3,971	41.9	12,107	42.0	160	39.1	520	40.5	274	44.0	818	44.3
PRENATAL CARE												
TRIMESTER CARE BEGAN												
1ST TRIMESTER	7,650	80.5	23,241	80.6	336	84.4	1,042	82.8	487	77.5	1,415	77.7
3RD TRIMESTER	404	4.2	1,194	4.1	14	3.5	36	2.9	32	5.1	97	5.3
NO PRENATAL CARE	44	0.5	133	0.5	4	1.1	10	0.8	1	0.2	6	0.4
APNCU INDEX												
ADEQUATE+	2,208	24.5	6,926	25.1	110	29.3	378	31.5	143	25.5	384	22.8
ADEQUATE	3,568	39.6	11,322	41.0	146	38.8	474	39.5	217	38.7	683	40.5
INTERMEDIATE	1,766	19.6	5,038	18.2	76	20.2	211	17.6	106	18.9	345	20.5
INADEQUATE	1,461	16.2	4,340	15.7	44	11.7	137	11.4	95	16.9	275	16.3
KESSNER INDEX												
ADEQUATE	6,082	67.4	18,976	68.5	284	75.1	893	74.2	359	63.7	1,103	64.9
INTERMEDIATE	2,491	27.6	7,379	26.7	76	20.1	265	22.0	172	30.5	493	29.0
INADEQUATE	448	5.0	1,327	4.8	18	4.8	46	3.8	33	5.9	103	6.1
C-SECTION BIRTHS	1,926	19.6	5,509	18.7	93	22.1	298	22.9	162	23.8	410	21.3
PRE-TERM BIRTHS	973	9.8	2,992	10.0	55	12.9	198	14.9	83	12.1	212	10.9
LOW BIRTHWEIGHT	577	5.8	1,700	5.7	47	11.0	148	11.2	56	8.2	145	7.4

Note: Unknown responses are excluded from the denominator when calculating percentages.

(1) Rate per 1,000 population.

* Rates based on fewer than 10 occurrences are statistically unreliable and should be used with caution.

** Data suppressed for confidentiality concerns if total births to residents, by race, is less than five observations.

TABLE 2 **SELECTED BIRTH STATISTICS REPORTED BY MOTHER'S RACE:**
2002 AND 2000-2002
ALEUTIANS EAST BOROUGH

	TOTAL				WHITE				NATIVE			
	2002 NUMBER	2002 RATE*	2000-2002 NUMBER	2000-2002 RATE*	2002 NUMBER	2002 RATE*	2000-2002 NUMBER	2000-2002 RATE*	2002 NUMBER	2002 RATE*	2000-2002 NUMBER	2000-2002 RATE*
BIRTH RATES (1)												
CRUDE BIRTH RATE	14	5.1	55	6.8								
TEEN BIRTH RATE												
15-17	0	0.0	1	8.8 *								
18-19	1	52.6 *	5	92.6 *								
15-19	1	18.5 *	6	35.9 *								
FERTILITY RATE	14	27.5	55	37.3								

	TOTAL				WHITE				NATIVE			
	2002 NUMBER	2002 %	2000-2002 NUMBER	2000-2002 %	2002 NUMBER	2002 %	2000-2002 NUMBER	2000-2002 %	2002 NUMBER	2002 %	2000-2002 NUMBER	2000-2002 %
BIRTHS												
WITHIN AREA	0	0.0	1	100.0	0	0.0	0	0.0	0	0.0	1	100.0
TO RESIDENTS	14	100.0	55	100.0	2	14.3	10	18.2	9	64.3	40	72.7
FACILITY												
HOSPITAL	12	85.7	49	89.1	1	50.0	6	60.0	9	100.0	39	97.5
BIRTHING CENTER	0	0.0	0	0.0	0	0.0	0	0.0	0	0.0	0	0.0
HOME	0	0.0	0	0.0	0	0.0	0	0.0	0	0.0	0	0.0
OTHER	0	0.0	1	1.8	0	0.0	0	0.0	0	0.0	1	2.5
OUTSIDE ALASKA	2	14.3	5	9.1	1	50.0	4	40.0	0	0.0	0	0.0
MOTHER CHARACTERISTICS												
AGE GROUP												
<15	0	0.0	0	0.0	**	**	0	0.0	**	**	0	0.0
15-19	1	7.1	6	10.9	**	**	1	10.0	**	**	5	12.5
20-24	3	21.4	17	30.9	**	**	2	20.0	**	**	14	35.0
25-29	4	28.6	10	18.2	**	**	3	30.0	**	**	5	12.5
30-34	3	21.4	10	18.2	**	**	1	10.0	**	**	7	17.5
35-39	3	21.4	12	21.8	**	**	3	30.0	**	**	9	22.5
40-44	0	0.0	0	0.0	**	**	0	0.0	**	**	0	0.0
45+	0	0.0	0	0.0	**	**	0	0.0	**	**	0	0.0
REPORTED DRINKING	0	0.0	2	4.0	**	**	0	0.0	**	**	2	5.0
REPORTED SMOKING	4	30.8	19	35.8	**	**	0	0.0	**	**	18	45.0
UNWED	5	38.5	26	49.1	**	**	4	44.4	**	**	19	47.5
EDUCATION												
<12 YEARS	1	7.1	5	9.4	**	**	2	20.0	**	**	2	5.3
12 YEARS	10	71.4	35	66.0	**	**	3	30.0	**	**	29	76.3
12+ YEARS	3	21.4	13	24.5	**	**	5	50.0	**	**	7	18.4
PRENATAL CARE												
TRIMESTER CARE BEGAN												
1ST TRIMESTER	11	84.6	42	80.8	**	**	8	88.9	**	**	32	84.2
3RD TRIMESTER	0	0.0	2	3.8	**	**	0	0.0	**	**	2	5.3
NO PRENATAL CARE	0	0.0	2	3.8	**	**	0	0.0	**	**	2	5.0
APNCU INDEX												
ADEQUATE+	7	53.8	28	52.8	**	**	5	62.5	**	**	22	55.0
ADEQUATE	5	38.5	14	26.4	**	**	1	12.5	**	**	10	25.0
INTERMEDIATE	1	7.7	5	9.4	**	**	2	25.0	**	**	2	5.0
INADEQUATE	0	0.0	6	11.3	**	**	0	0.0	**	**	6	15.0
KESSNER INDEX												
ADEQUATE	11	84.6	41	77.4	**	**	7	87.5	**	**	32	80.0
INTERMEDIATE	2	15.4	8	15.1	**	**	1	12.5	**	**	4	10.0
INADEQUATE	0	0.0	4	7.5	**	**	0	0.0	**	**	4	10.0
C-SECTION BIRTHS	5	38.5	14	26.4	**	**	4	44.4	**	**	8	20.0
PRE-TERM BIRTHS	1	7.1	6	10.9	**	**	1	10.0	**	**	4	10.0
LOW BIRTHWEIGHT	0	0.0	1	1.8	**	**	0	0.0	**	**	0	0.0

Note: Unknown responses are excluded from the denominator when calculating percentages.
 (1) Rate per 1,000 population.
 * Rates based on fewer than 10 occurrences are statistically unreliable and should be used with caution.
 ** Data suppressed for confidentiality concerns if total births to residents, by race, is less than five observations.

**TABLE 2 SELECTED BIRTH STATISTICS REPORTED BY MOTHER'S RACE:
2002 AND 2000-2002
ALEUTIANS WEST CENSUS AREA**

	TOTAL				WHITE				NATIVE			
	2002 NUMBER	2002 RATE*	2000-2002 NUMBER	2000-2002 RATE*	2002 NUMBER	2002 RATE*	2000-2002 NUMBER	2000-2002 RATE*	2002 NUMBER	2002 RATE*	2000-2002 NUMBER	2000-2002 RATE*
BIRTH RATES (1)												
CRUDE BIRTH RATE	43	8.5	126	8.0								
TEEN BIRTH RATE												
15-17	0	0.0	0	0.0								
18-19	3	83.3 *	6	56.6 *								
15-19	3	26.3 *	6	16.9 *								
FERTILITY RATE	43	45.4	126	41.7								

	TOTAL				WHITE				NATIVE			
	2002 NUMBER	2002 %	2000-2002 NUMBER	2000-2002 %	2002 NUMBER	2002 %	2000-2002 NUMBER	2000-2002 %	2002 NUMBER	2002 %	2000-2002 NUMBER	2000-2002 %
BIRTHS												
WITHIN AREA	0	0.0	3	100.0	0	0.0	3	100.0	0	0.0	0	0.0
TO RESIDENTS	43	100.0	126	100.0	21	48.8	59	46.8	13	30.2	45	35.7
FACILITY												
HOSPITAL	31	72.1	87	69.0	11	52.4	29	49.2	13	100.0	45	100.0
BIRTHING CENTER	1	2.3	3	2.4	1	4.8	3	5.1	0	0.0	0	0.0
HOME	0	0.0	0	0.0	0	0.0	0	0.0	0	0.0	0	0.0
OTHER	0	0.0	1	0.8	0	0.0	1	1.7	0	0.0	0	0.0
OUTSIDE ALASKA	11	25.6	35	27.8	9	42.9	26	44.1	0	0.0	0	0.0
MOTHER CHARACTERISTICS												
AGE GROUP												
<15	0	0.0	0	0.0	0	0.0	0	0.0	0	0.0	0	0.0
15-19	3	7.0	6	4.8	1	4.8	3	5.2	2	15.4	3	6.7
20-24	8	18.6	26	20.8	3	14.3	9	15.5	4	30.8	14	31.1
25-29	10	23.3	33	26.4	5	23.8	17	29.3	2	15.4	11	24.4
30-34	13	30.2	29	23.2	7	33.3	13	22.4	2	15.4	6	13.3
35-39	8	18.6	26	20.8	4	19.0	13	22.4	3	23.1	11	24.4
40-44	1	2.3	5	4.0	1	4.8	3	5.2	0	0.0	0	0.0
45+	0	0.0	0	0.0	0	0.0	0	0.0	0	0.0	0	0.0
REPORTED DRINKING	3	8.1	3	2.8	2	12.5	2	4.1	1	7.7	1	2.2
REPORTED SMOKING	6	14.3	25	20.8	2	10.0	5	8.9	4	30.8	20	44.4
UNWED	11	26.8	36	30.3	2	10.5	10	18.2	7	53.8	19	42.2
EDUCATION												
<12 YEARS	4	9.8	13	10.7	1	5.0	1	1.7	2	15.4	10	22.2
12 YEARS	19	46.3	59	48.4	7	35.0	29	50.0	10	76.9	25	55.6
12+ YEARS	18	43.9	50	41.0	12	60.0	28	48.3	1	7.7	10	22.2
PRENATAL CARE												
TRIMESTER CARE BEGAN												
1ST TRIMESTER	33	84.6	98	83.1	14	77.8	43	76.8	12	92.3	40	90.9
3RD TRIMESTER	0	0.0	7	5.9	0	0.0	5	8.9	0	0.0	1	2.3
NO PRENATAL CARE	0	0.0	0	0.0	0	0.0	0	0.0	0	0.0	0	0.0
APNCU INDEX												
ADEQUATE+	9	24.3	42	36.5	1	5.9	11	20.0	7	53.8	27	62.8
ADEQUATE	14	37.8	40	34.8	9	52.9	23	41.8	4	30.8	11	25.6
INTERMEDIATE	9	24.3	15	13.0	3	17.6	7	12.7	1	7.7	2	4.7
INADEQUATE	5	13.5	18	15.7	4	23.5	14	25.5	1	7.7	3	7.0
KESSNER INDEX												
ADEQUATE	25	67.6	83	72.2	11	64.7	37	67.3	12	92.3	37	86.0
INTERMEDIATE	12	32.4	25	21.7	6	35.3	13	23.6	1	7.7	5	11.6
INADEQUATE	0	0.0	7	6.1	0	0.0	5	9.1	0	0.0	1	2.3
C-SECTION BIRTHS	10	24.4	27	22.7	8	42.1	17	31.5	1	7.7	6	13.3
PRE-TERM BIRTHS	2	4.7	8	6.3	1	4.8	4	6.8	0	0.0	3	6.7
LOW BIRTHWEIGHT	2	4.7	4	3.2	1	4.8	1	1.7	0	0.0	2	4.4

Note: Unknown responses are excluded from the denominator when calculating percentages.

(1) Rate per 1,000 population.

* Rates based on fewer than 10 occurrences are statistically unreliable and should be used with caution.

** Data suppressed for confidentiality concerns if total births to residents, by race, is less than five observations.

TABLE 2 **SELECTED BIRTH STATISTICS REPORTED BY MOTHER'S RACE:**
2002 AND 2000-2002
MUNICIPALITY OF ANCHORAGE

	TOTAL				WHITE				NATIVE			
	2002 NUMBER	2002 RATE*	2000-2002 NUMBER	2000-2002 RATE*	2002 NUMBER	2002 RATE*	2000-2002 NUMBER	2000-2002 RATE*	2002 NUMBER	2002 RATE*	2000-2002 NUMBER	2000-2002 RATE*
BIRTH RATES (1)												
CRUDE BIRTH RATE	4,144	15.4	12,428	15.7								
TEEN BIRTH RATE												
15-17	107	17.4	370	20.3								
18-19	314	77.7	926	82.4								
15-19	421	41.4	1,296	44.0								
FERTILITY RATE	4,144	66.9	12,428	67.1								

	TOTAL				WHITE				NATIVE			
	2002 NUMBER	2002 %	2000-2002 NUMBER	2000-2002 %	2002 NUMBER	2002 %	2000-2002 NUMBER	2000-2002 %	2002 NUMBER	2002 %	2000-2002 NUMBER	2000-2002 %
BIRTHS												
WITHIN AREA	5,361	100.0	15,969	100.0	3,222	60.1	9,733	60.9	1,266	23.6	3,756	23.5
TO RESIDENTS	4,144	100.0	12,428	100.0	2,762	66.7	8,370	67.3	558	13.5	1,712	13.8
FACILITY												
HOSPITAL	4,006	96.7	11,994	96.5	2,639	95.5	7,984	95.4	552	98.9	1,701	99.4
BIRTHING CENTER	66	1.6	225	1.8	60	2.2	208	2.5	4	0.7	8	0.5
HOME	54	1.3	142	1.1	51	1.8	127	1.5	1	0.2	1	0.1
OTHER	0	0.0	3	0.0	0	0.0	3	0.0	0	0.0	0	0.0
OUTSIDE ALASKA	18	0.4	64	0.5	12	0.4	48	0.6	1	0.2	2	0.1
MOTHER CHARACTERISTICS												
AGE GROUP												
<15	5	0.1	17	0.1	1	0.0	5	0.1	2	0.4	5	0.3
15-19	421	10.2	1,296	10.4	217	7.9	680	8.1	100	18.0	305	17.8
20-24	1,149	27.8	3,333	26.8	733	26.6	2,114	25.3	185	33.2	569	33.3
25-29	1,032	24.9	3,267	26.3	681	24.7	2,235	26.7	143	25.7	429	25.1
30-34	958	23.2	2,775	22.3	713	25.9	2,055	24.6	75	13.5	247	14.4
35-39	444	10.7	1,367	11.0	316	11.5	1,008	12.1	41	7.4	122	7.1
40-44	124	3.0	348	2.8	93	3.4	255	3.0	11	2.0	33	1.9
45+	4	0.1	14	0.1	3	0.1	10	0.1	0	0.0	1	0.1
REPORTED DRINKING	102	2.5	287	2.3	54	2.0	152	1.8	37	6.7	107	6.3
REPORTED SMOKING	578	14.1	1,765	14.4	297	10.9	963	11.6	206	37.0	583	34.3
UNWED	1,365	33.0	3,949	31.8	678	24.6	1,970	23.6	360	64.6	1,060	62.3
EDUCATION												
<12 YEARS	553	14.0	1,584	13.1	264	10.0	727	8.9	177	32.1	520	31.0
12 YEARS	1,645	41.8	4,815	39.9	1,021	38.6	3,043	37.1	264	47.8	802	47.7
12+ YEARS	1,738	44.2	5,659	46.9	1,357	51.4	4,430	54.0	111	20.1	358	21.3
PRENATAL CARE												
TRIMESTER CARE BEGAN												
1ST TRIMESTER	3,330	84.8	10,268	85.9	2,314	87.4	7,207	88.5	431	78.5	1,344	80.3
3RD TRIMESTER	133	3.4	327	2.7	85	3.2	184	2.3	19	3.5	57	3.4
NO PRENATAL CARE	19	0.5	49	0.4	8	0.3	14	0.2	6	1.1	20	1.2
APNCU INDEX												
ADEQUATE+	962	26.9	3,119	28.0	669	28.0	2,196	29.2	117	21.6	395	23.8
ADEQUATE	1,569	43.9	5,168	46.5	1,096	45.8	3,645	48.5	221	40.8	713	43.0
INTERMEDIATE	638	17.9	1,741	15.7	412	17.2	1,115	14.8	104	19.2	280	16.9
INADEQUATE	403	11.3	1,092	9.8	214	9.0	555	7.4	100	18.5	270	16.3
KESSNER INDEX												
ADEQUATE	2,737	76.4	8,733	78.3	1,938	80.8	6,227	82.7	343	63.3	1,098	66.1
INTERMEDIATE	694	19.4	2,045	18.3	367	15.3	1,104	14.7	174	32.1	486	29.3
INADEQUATE	152	4.2	376	3.4	93	3.9	198	2.6	25	4.6	77	4.6
C-SECTION BIRTHS	876	21.3	2,515	20.5	621	22.7	1,794	21.8	54	9.7	187	10.9
PRE-TERM BIRTHS	383	9.3	1,211	9.8	236	8.6	734	8.8	52	9.3	174	10.2
LOW BIRTHWEIGHT	261	6.3	766	6.2	141	5.1	418	5.0	36	6.5	113	6.6

Note: Unknown responses are excluded from the denominator when calculating percentages.

(1) Rate per 1,000 population.

* Rates based on fewer than 10 occurrences are statistically unreliable and should be used with caution.

** Data suppressed for confidentiality concerns if total births to residents, by race, is less than five observations.

**TABLE 2 SELECTED BIRTH STATISTICS REPORTED BY MOTHER'S RACE:
2002 AND 2000-2002
BETHEL CENSUS AREA**

	TOTAL				WHITE				NATIVE			
	2002 NUMBER	2002 RATE*	2000-2002 NUMBER	2000-2002 RATE*	2002 NUMBER	2002 RATE*	2000-2002 NUMBER	2000-2002 RATE*	2002 NUMBER	2002 RATE*	2000-2002 NUMBER	2000-2002 RATE*
BIRTH RATES (1)												
CRUDE BIRTH RATE	399	24.2	1,275	26.2								
TEEN BIRTH RATE												
15-17	13	27.1	57	40.5								
18-19	33	119.6	109	149.1								
15-19	46	60.8	166	77.6								
FERTILITY RATE	399	118.7	1,275	127.1								

	TOTAL				WHITE				NATIVE			
	2002 NUMBER	2002 %	2000-2002 NUMBER	2000-2002 %	2002 NUMBER	2002 %	2000-2002 NUMBER	2000-2002 %	2002 NUMBER	2002 %	2000-2002 NUMBER	2000-2002 %
BIRTHS												
WITHIN AREA	341	100.0	1,125	100.0	9	2.6	24	2.1	327	95.9	1,089	96.8
TO RESIDENTS	399	100.0	1,275	100.0	29	7.3	82	6.4	366	91.7	1,183	92.8
FACILITY												
HOSPITAL	397	99.5	1,259	98.7	27	93.1	74	90.2	366	100.0	1,175	99.3
BIRTHING CENTER	1	0.3	2	0.2	1	3.4	2	2.4	0	0.0	0	0.0
HOME	0	0.0	1	0.1	0	0.0	1	1.2	0	0.0	0	0.0
OTHER	0	0.0	7	0.5	0	0.0	0	0.0	0	0.0	7	0.6
OUTSIDE ALASKA	1	0.3	6	0.5	1	3.4	5	6.1	0	0.0	1	0.1
MOTHER CHARACTERISTICS												
AGE GROUP												
<15	0	0.0	3	0.2	0	0.0	0	0.0	0	0.0	3	0.3
15-19	46	11.5	166	13.0	1	3.4	1	1.2	44	12.0	164	13.9
20-24	133	33.3	383	30.0	5	17.2	14	17.1	126	34.4	366	30.9
25-29	111	27.8	349	27.4	5	17.2	26	31.7	106	29.0	322	27.2
30-34	56	14.0	217	17.0	8	27.6	25	30.5	48	13.1	188	15.9
35-39	37	9.3	119	9.3	5	17.2	10	12.2	31	8.5	108	9.1
40-44	16	4.0	37	2.9	5	17.2	6	7.3	11	3.0	31	2.6
45+	0	0.0	1	0.1	0	0.0	0	0.0	0	0.0	1	0.1
REPORTED DRINKING	22	5.5	65	5.2	1	3.6	2	2.6	21	5.8	63	5.4
REPORTED SMOKING	63	15.8	233	18.4	2	6.9	7	8.6	61	16.7	226	19.2
UNWED	183	46.0	564	44.4	6	20.7	11	13.4	175	47.9	550	46.7
EDUCATION												
<12 YEARS	72	18.7	264	21.5	2	7.7	2	2.6	70	19.5	262	22.9
12 YEARS	264	68.4	789	64.3	2	7.7	17	22.4	261	72.7	769	67.2
12+ YEARS	50	13.0	174	14.2	22	84.6	57	75.0	28	7.8	113	9.9
PRENATAL CARE												
TRIMESTER CARE BEGAN												
1ST TRIMESTER	228	58.3	778	62.4	18	64.3	57	74.0	208	57.8	714	61.5
3RD TRIMESTER	38	9.7	131	10.5	2	7.1	7	9.1	36	10.0	124	10.7
NO PRENATAL CARE	1	0.3	7	0.6	0	0.0	1	1.3	1	0.3	6	0.5
APNCU INDEX												
ADEQUATE+	39	10.1	146	11.8	4	14.3	14	18.7	35	9.8	132	11.5
ADEQUATE	64	16.5	269	21.8	11	39.3	29	38.7	53	14.9	237	20.6
INTERMEDIATE	115	29.7	323	26.2	5	17.9	14	18.7	108	30.3	304	26.4
INADEQUATE	169	43.7	497	40.2	8	28.6	18	24.0	160	44.9	478	41.5
KESSNER INDEX												
ADEQUATE	107	27.6	410	33.1	18	64.3	50	66.7	88	24.6	355	30.8
INTERMEDIATE	242	62.4	690	55.7	8	28.6	17	22.7	232	65.0	669	58.0
INADEQUATE	39	10.1	138	11.1	2	7.1	8	10.7	37	10.4	130	11.3
C-SECTION BIRTHS	37	9.3	110	8.8	6	20.7	18	22.5	30	8.2	90	7.7
PRE-TERM BIRTHS	54	13.5	182	14.3	0	0.0	1	1.2	53	14.5	179	15.1
LOW BIRTHWEIGHT	24	6.0	70	5.5	0	0.0	0	0.0	23	6.3	69	5.8

Note: Unknown responses are excluded from the denominator when calculating percentages.

(1) Rate per 1,000 population.

* Rates based on fewer than 10 occurrences are statistically unreliable and should be used with caution.

** Data suppressed for confidentiality concerns if total births to residents, by race, is less than five observations.

TABLE 2 **SELECTED BIRTH STATISTICS REPORTED BY MOTHER'S RACE:**
2002 AND 2000-2002
BRISTOL BAY BOROUGH

	TOTAL				WHITE				NATIVE			
	2002 NUMBER	2002 RATE*	2000-2002 NUMBER	2000-2002 RATE*	2002 NUMBER	2002 RATE*	2000-2002 NUMBER	2000-2002 RATE*	2002 NUMBER	2002 RATE*	2000-2002 NUMBER	2000-2002 RATE*
BIRTH RATES (1)												
CRUDE BIRTH RATE	17	14.7	49	13.6								
TEEN BIRTH RATE												
15-17	0	0.0	2	22.5 *								
18-19	0	0.0	2	37.0 *								
15-19	0	0.0	4	28.0 *								
FERTILITY RATE	17	71.4	49	65.8								

	TOTAL				WHITE				NATIVE			
	2002 NUMBER	2002 %	2000-2002 NUMBER	2000-2002 %	2002 NUMBER	2002 %	2000-2002 NUMBER	2000-2002 %	2002 NUMBER	2002 %	2000-2002 NUMBER	2000-2002 %
BIRTHS												
WITHIN AREA	0	0.0	1	100.0	0	0.0	1	100.0	0	0.0	0	0.0
TO RESIDENTS	17	100.0	49	100.0	11	64.7	33	67.3	5	29.4	15	30.6
FACILITY												
HOSPITAL	16	94.1	47	95.9	10	90.9	31	93.9	5	100.0	15	100.0
BIRTHING CENTER	1	5.9	1	2.0	1	9.1	1	3.0	0	0.0	0	0.0
HOME	0	0.0	0	0.0	0	0.0	0	0.0	0	0.0	0	0.0
OTHER	0	0.0	1	2.0	0	0.0	1	3.0	0	0.0	0	0.0
OUTSIDE ALASKA	0	0.0	0	0.0	0	0.0	0	0.0	0	0.0	0	0.0
MOTHER CHARACTERISTICS												
AGE GROUP												
<15	0	0.0	0	0.0	0	0.0	0	0.0	0	0.0	0	0.0
15-19	0	0.0	4	8.2	0	0.0	2	6.1	0	0.0	2	13.3
20-24	6	35.3	9	18.4	5	45.5	7	21.2	0	0.0	1	6.7
25-29	9	52.9	21	42.9	5	45.5	13	39.4	4	80.0	8	53.3
30-34	1	5.9	8	16.3	0	0.0	5	15.2	1	20.0	3	20.0
35-39	1	5.9	2	4.1	1	9.1	2	6.1	0	0.0	0	0.0
40-44	0	0.0	5	10.2	0	0.0	4	12.1	0	0.0	1	6.7
45+	0	0.0	0	0.0	0	0.0	0	0.0	0	0.0	0	0.0
REPORTED DRINKING	0	0.0	0	0.0	0	0.0	0	0.0	0	0.0	0	0.0
REPORTED SMOKING	7	41.2	14	28.6	3	27.3	5	15.2	4	80.0	9	60.0
UNWED	5	29.4	18	36.7	3	27.3	10	30.3	2	40.0	8	53.3
EDUCATION												
<12 YEARS	0	0.0	3	6.1	0	0.0	1	3.0	0	0.0	2	13.3
12 YEARS	10	58.8	23	46.9	7	63.6	17	51.5	3	60.0	6	40.0
12+ YEARS	7	41.2	23	46.9	4	36.4	15	45.5	2	40.0	7	46.7
PRENATAL CARE												
TRIMESTER CARE BEGAN												
1ST TRIMESTER	14	82.4	42	85.7	9	81.8	29	87.9	4	80.0	12	80.0
3RD TRIMESTER	1	5.9	3	6.1	1	9.1	2	6.1	0	0.0	1	6.7
NO PRENATAL CARE	0	0.0	0	0.0	0	0.0	0	0.0	0	0.0	0	0.0
APNCU INDEX												
ADEQUATE+	0	0.0	2	4.2	0	0.0	1	3.1	0	0.0	1	6.7
ADEQUATE	5	31.3	19	39.6	5	50.0	15	46.9	0	0.0	4	26.7
INTERMEDIATE	8	50.0	17	35.4	3	30.0	9	28.1	4	80.0	7	46.7
INADEQUATE	3	18.8	10	20.8	2	20.0	7	21.9	1	20.0	3	20.0
KESSNER INDEX												
ADEQUATE	8	50.0	30	62.5	7	70.0	23	71.9	0	0.0	6	40.0
INTERMEDIATE	7	43.8	15	31.3	2	20.0	7	21.9	5	100.0	8	53.3
INADEQUATE	1	6.3	3	6.3	1	10.0	2	6.3	0	0.0	1	6.7
C-SECTION BIRTHS	6	35.3	13	26.5	4	36.4	10	30.3	2	40.0	3	20.0
PRE-TERM BIRTHS	2	11.8	3	6.1	0	0.0	1	3.0	2	40.0	2	13.3
LOW BIRTHWEIGHT	0	0.0	0	0.0	0	0.0	0	0.0	0	0.0	0	0.0

Note: Unknown responses are excluded from the denominator when calculating percentages.

(1) Rate per 1,000 population.

* Rates based on fewer than 10 occurrences are statistically unreliable and should be used with caution.

** Data suppressed for confidentiality concerns if total births to residents, by race, is less than five observations.

**TABLE 2 SELECTED BIRTH STATISTICS REPORTED BY MOTHER'S RACE:
2002 AND 2000-2002
DENALI BOROUGH**

	TOTAL				WHITE				NATIVE			
	2002 NUMBER	2002 RATE*	2000-2002 NUMBER	2000-2002 RATE*	2002 NUMBER	2002 RATE*	2000-2002 NUMBER	2000-2002 RATE*	2002 NUMBER	2002 RATE*	2000-2002 NUMBER	2000-2002 RATE*
BIRTH RATES (1)												
CRUDE BIRTH RATE	26	13.8	68	12.0								
TEEN BIRTH RATE												
15-17	2	40.0 *	2	13.9 *								
18-19	1	52.6 *	1	19.2 *								
15-19	3	43.5 *	3	15.3 *								
FERTILITY RATE	26	67.2	68	58.2								

	TOTAL				WHITE				NATIVE			
	2002 NUMBER	2002 %	2000-2002 NUMBER	2000-2002 %	2002 NUMBER	2002 %	2000-2002 NUMBER	2000-2002 %	2002 NUMBER	2002 %	2000-2002 NUMBER	2000-2002 %
BIRTHS												
WITHIN AREA	0	0.0	1	100.0	0	0.0	1	100.0	0	0.0	0	0.0
TO RESIDENTS	26	100.0	68	100.0	24	92.3	60	88.2	1	3.8	3	4.4
FACILITY												
HOSPITAL	25	96.2	61	89.7	23	95.8	53	88.3	1	100.0	3	100.0
BIRTHING CENTER	1	3.8	5	7.4	1	4.2	5	8.3	0	0.0	0	0.0
HOME	0	0.0	1	1.5	0	0.0	1	1.7	0	0.0	0	0.0
OTHER	0	0.0	0	0.0	0	0.0	0	0.0	0	0.0	0	0.0
OUTSIDE ALASKA	0	0.0	1	1.5	0	0.0	1	1.7	0	0.0	0	0.0
MOTHER CHARACTERISTICS												
AGE GROUP												
<15	0	0.0	0	0.0	**	**	**	**	**	**	**	**
15-19	3	11.5	3	4.4	**	**	**	**	**	**	**	**
20-24	5	19.2	13	19.1	**	**	**	**	**	**	**	**
25-29	8	30.8	22	32.4	**	**	**	**	**	**	**	**
30-34	3	11.5	15	22.1	**	**	**	**	**	**	**	**
35-39	3	11.5	7	10.3	**	**	**	**	**	**	**	**
40-44	4	15.4	8	11.8	**	**	**	**	**	**	**	**
45+	0	0.0	0	0.0	**	**	**	**	**	**	**	**
REPORTED DRINKING	1	3.8	1	1.5	**	**	**	**	**	**	**	**
REPORTED SMOKING	9	34.6	13	19.1	**	**	**	**	**	**	**	**
UNWED	5	19.2	15	22.1	**	**	**	**	**	**	**	**
EDUCATION												
<12 YEARS	2	8.3	4	6.2	**	**	**	**	**	**	**	**
12 YEARS	11	45.8	31	47.7	**	**	**	**	**	**	**	**
12+ YEARS	11	45.8	30	46.2	**	**	**	**	**	**	**	**
PRENATAL CARE												
TRIMESTER CARE BEGAN												
1ST TRIMESTER	22	84.6	53	79.1	**	**	**	**	**	**	**	**
3RD TRIMESTER	1	3.8	3	4.5	**	**	**	**	**	**	**	**
NO PRENATAL CARE	0	0.0	0	0.0	**	**	**	**	**	**	**	**
APNCU INDEX												
ADEQUATE+	3	11.5	5	7.5	**	**	**	**	**	**	**	**
ADEQUATE	9	34.6	18	26.9	**	**	**	**	**	**	**	**
INTERMEDIATE	10	38.5	31	46.3	**	**	**	**	**	**	**	**
INADEQUATE	4	15.4	13	19.4	**	**	**	**	**	**	**	**
KESSNER INDEX												
ADEQUATE	16	61.5	33	49.3	**	**	**	**	**	**	**	**
INTERMEDIATE	9	34.6	31	46.3	**	**	**	**	**	**	**	**
INADEQUATE	1	3.8	3	4.5	**	**	**	**	**	**	**	**
C-SECTION BIRTHS	4	15.4	12	17.6	**	**	**	**	**	**	**	**
PRE-TERM BIRTHS	2	7.7	4	6.0	**	**	**	**	**	**	**	**
LOW BIRTHWEIGHT	1	3.8	1	1.5	**	**	**	**	**	**	**	**

Note: Unknown responses are excluded from the denominator when calculating percentages.

(1) Rate per 1,000 population.

* Rates based on fewer than 10 occurrences are statistically unreliable and should be used with caution.

** Data suppressed for confidentiality concerns if total births to residents, by race, is less than five observations.

TABLE 2 **SELECTED BIRTH STATISTICS REPORTED BY MOTHER'S RACE:**
2002 AND 2000-2002
DILLINGHAM CENSUS AREA

	TOTAL				WHITE				NATIVE			
	2002 NUMBER	2002 RATE*	2000-2002 NUMBER	2000-2002 RATE*	2002 NUMBER	2002 RATE*	2000-2002 NUMBER	2000-2002 RATE*	2002 NUMBER	2002 RATE*	2000-2002 NUMBER	2000-2002 RATE*
BIRTH RATES (1)												
CRUDE BIRTH RATE	98	19.9	282	19.1								
TEEN BIRTH RATE												
15-17	6	39.5 *	22	50.3								
18-19	7	114.8 *	23	151.3								
15-19	13	61.0	45	76.4								
FERTILITY RATE	98	98.9	282	95.5								

	TOTAL				WHITE				NATIVE			
	2002 NUMBER	2002 %	2000-2002 NUMBER	2000-2002 %	2002 NUMBER	2002 %	2000-2002 NUMBER	2000-2002 %	2002 NUMBER	2002 %	2000-2002 NUMBER	2000-2002 %
BIRTHS												
WITHIN AREA	56	100.0	163	100.0	4	7.1	9	5.5	50	89.3	152	93.3
TO RESIDENTS	98	100.0	282	100.0	16	16.3	42	14.9	80	81.6	237	84.0
FACILITY												
HOSPITAL	89	90.8	264	93.6	11	68.8	31	73.8	77	96.3	231	97.5
BIRTHING CENTER	0	0.0	0	0.0	0	0.0	0	0.0	0	0.0	0	0.0
HOME	2	2.0	2	0.7	1	6.3	1	2.4	1	1.3	1	0.4
OTHER	3	3.1	5	1.8	0	0.0	0	0.0	2	2.5	4	1.7
OUTSIDE ALASKA	4	4.1	11	3.9	4	25.0	10	23.8	0	0.0	1	0.4
MOTHER CHARACTERISTICS												
AGE GROUP												
<15	1	1.0	1	0.4	0	0.0	0	0.0	1	1.3	1	0.4
15-19	13	13.3	45	16.0	0	0.0	0	0.0	13	16.3	45	19.0
20-24	28	28.6	78	27.7	3	18.8	5	11.9	25	31.3	73	30.8
25-29	28	28.6	63	22.3	7	43.8	17	40.5	20	25.0	45	19.0
30-34	17	17.3	61	21.6	4	25.0	14	33.3	13	16.3	47	19.8
35-39	11	11.2	29	10.3	2	12.5	5	11.9	8	10.0	22	9.3
40-44	0	0.0	4	1.4	0	0.0	1	2.4	0	0.0	3	1.3
45+	0	0.0	1	0.4	0	0.0	0	0.0	0	0.0	1	0.4
REPORTED DRINKING	4	4.1	14	5.0	1	6.7	5	12.2	3	3.8	9	3.8
REPORTED SMOKING	38	38.8	113	40.1	3	18.8	6	14.3	35	43.8	107	45.1
UNWED	47	48.0	140	49.8	5	31.3	8	19.5	41	51.3	131	55.3
EDUCATION												
<12 YEARS	19	19.8	50	18.0	0	0.0	1	2.5	19	24.4	49	20.9
12 YEARS	51	53.1	157	56.5	4	25.0	11	27.5	46	59.0	145	61.7
12+ YEARS	26	27.1	71	25.5	12	75.0	28	70.0	13	16.7	41	17.4
PRENATAL CARE												
TRIMESTER CARE BEGAN												
1ST TRIMESTER	78	80.4	191	68.5	14	87.5	34	81.0	62	78.5	154	65.8
3RD TRIMESTER	6	6.2	42	15.1	1	6.3	4	9.5	5	6.3	38	16.2
NO PRENATAL CARE	1	1.0	3	1.1	0	0.0	0	0.0	1	1.3	3	1.3
APNCU INDEX												
ADEQUATE+	21	21.6	60	21.6	6	40.0	11	28.2	15	18.8	49	20.8
ADEQUATE	26	26.8	73	26.3	4	26.7	17	43.6	21	26.3	54	22.9
INTERMEDIATE	26	26.8	53	19.1	3	20.0	5	12.8	22	27.5	47	19.9
INADEQUATE	24	24.7	92	33.1	2	13.3	6	15.4	22	27.5	86	36.4
KESSNER INDEX												
ADEQUATE	49	50.5	135	48.4	10	66.7	27	69.2	38	47.5	106	44.7
INTERMEDIATE	41	42.3	99	35.5	4	26.7	8	20.5	36	45.0	90	38.0
INADEQUATE	7	7.2	45	16.1	1	6.7	4	10.3	6	7.5	41	17.3
C-SECTION BIRTHS	8	8.2	30	10.7	4	25.0	16	38.1	4	5.0	14	5.9
PRE-TERM BIRTHS	14	14.3	46	16.3	4	25.0	6	14.3	9	11.3	39	16.5
LOW BIRTHWEIGHT	3	3.1	19	6.8	0	0.0	2	4.8	3	3.8	17	7.2

Note: Unknown responses are excluded from the denominator when calculating percentages.
 (1) Rate per 1,000 population.
 * Rates based on fewer than 10 occurrences are statistically unreliable and should be used with caution.
 ** Data suppressed for confidentiality concerns if total births to residents, by race, is less than five observations.

**TABLE 2 SELECTED BIRTH STATISTICS REPORTED BY MOTHER'S RACE:
2002 AND 2000-2002
FAIRBANKS NORTH STAR BOROUGH**

	TOTAL				WHITE				NATIVE			
	2002 NUMBER	2002 RATE*	2000-2002 NUMBER	2000-2002 RATE*	2002 NUMBER	2002 RATE*	2000-2002 NUMBER	2000-2002 RATE*	2002 NUMBER	2002 RATE*	2000-2002 NUMBER	2000-2002 RATE*
BIRTH RATES (1)												
CRUDE BIRTH RATE	1,515	17.9	4,540	18.1								
TEEN BIRTH RATE												
15-17	47	25.3	124	22.4								
18-19	98	72.0	298	77.7								
15-19	145	45.0	422	45.0								
FERTILITY RATE	1,515	77.6	4,540	77.3								

	TOTAL				WHITE				NATIVE			
	2002 NUMBER	2002 %	2000-2002 NUMBER	2000-2002 %	2002 NUMBER	2002 %	2000-2002 NUMBER	2000-2002 %	2002 NUMBER	2002 %	2000-2002 NUMBER	2000-2002 %
BIRTHS												
WITHIN AREA	1,716	100.0	5,078	100.0	1,243	72.4	3,694	72.7	244	14.2	706	13.9
TO RESIDENTS	1,515	100.0	4,540	100.0	1,144	75.5	3,409	75.1	148	9.8	468	10.3
FACILITY												
HOSPITAL	1,445	95.4	4,344	95.7	1,078	94.2	3,230	94.7	148	100.0	464	99.1
BIRTHING CENTER	51	3.4	133	2.9	49	4.3	124	3.6	0	0.0	2	0.4
HOME	11	0.7	40	0.9	10	0.9	37	1.1	0	0.0	0	0.0
OTHER	1	0.1	1	0.0	1	0.1	1	0.0	0	0.0	0	0.0
OUTSIDE ALASKA	7	0.5	22	0.5	6	0.5	17	0.5	0	0.0	2	0.4
MOTHER CHARACTERISTICS												
AGE GROUP												
<15	2	0.1	8	0.2	1	0.1	6	0.2	1	0.7	1	0.2
15-19	145	9.6	422	9.3	98	8.6	281	8.2	28	18.9	83	17.7
20-24	500	33.0	1,481	32.6	367	32.1	1,084	31.8	48	32.4	158	33.8
25-29	416	27.5	1,282	28.2	330	28.8	982	28.8	38	25.7	134	28.6
30-34	279	18.4	844	18.6	212	18.5	655	19.2	21	14.2	56	12.0
35-39	135	8.9	407	9.0	103	9.0	321	9.4	9	6.1	28	6.0
40-44	37	2.4	92	2.0	32	2.8	77	2.3	3	2.0	8	1.7
45+	1	0.1	4	0.1	1	0.1	3	0.1	0	0.0	0	0.0
REPORTED DRINKING	14	0.9	32	0.7	9	0.8	18	0.5	4	2.7	12	2.6
REPORTED SMOKING	222	14.7	611	13.5	162	14.2	428	12.6	46	31.1	133	28.5
UNWED	369	24.4	1,074	23.7	218	19.1	622	18.3	93	62.8	281	60.0
EDUCATION												
<12 YEARS	142	9.9	418	9.6	95	8.5	277	8.3	35	25.7	103	23.6
12 YEARS	555	38.6	1,899	43.7	415	37.3	1,424	42.6	58	42.6	209	47.8
12+ YEARS	741	51.5	2,031	46.7	603	54.2	1,642	49.1	43	31.6	125	28.6
PRENATAL CARE												
TRIMESTER CARE BEGAN												
1ST TRIMESTER	1,206	81.7	3,517	79.3	940	83.9	2,718	81.4	93	66.9	300	67.1
3RD TRIMESTER	49	3.3	188	4.2	29	2.6	124	3.7	8	5.8	34	7.6
NO PRENATAL CARE	4	0.3	8	0.2	3	0.3	6	0.2	0	0.0	0	0.0
APNCU INDEX												
ADEQUATE+	313	21.2	990	22.3	240	21.4	738	22.1	24	17.3	93	20.8
ADEQUATE	652	44.2	1,870	42.2	520	46.4	1,483	44.4	47	33.8	140	31.3
INTERMEDIATE	316	21.4	880	19.9	230	20.5	647	19.4	37	26.6	96	21.5
INADEQUATE	195	13.2	690	15.6	131	11.7	470	14.1	31	22.3	118	26.4
KESSNER INDEX												
ADEQUATE	1,032	69.9	2,989	67.4	816	72.8	2,338	70.0	76	54.7	234	52.3
INTERMEDIATE	391	26.5	1,247	28.1	273	24.4	872	26.1	55	39.6	179	40.0
INADEQUATE	53	3.6	196	4.4	32	2.9	130	3.9	8	5.8	34	7.6
C-SECTION BIRTHS	287	19.1	760	16.9	220	19.4	565	16.7	26	17.6	79	16.9
PRE-TERM BIRTHS	137	9.1	411	9.1	90	7.9	287	8.5	19	12.8	56	12.1
LOW BIRTHWEIGHT	81	5.4	247	5.5	60	5.3	179	5.3	5	3.4	23	4.9

Note: Unknown responses are excluded from the denominator when calculating percentages.

(1) Rate per 1,000 population.

* Rates based on fewer than 10 occurrences are statistically unreliable and should be used with caution.

** Data suppressed for confidentiality concerns if total births to residents, by race, is less than five observations.

TABLE 2 **SELECTED BIRTH STATISTICS REPORTED BY MOTHER'S RACE:**
2002 AND 2000-2002
HAINES BOROUGH

	TOTAL				WHITE				NATIVE			
	2002 NUMBER	2002 RATE*	2000-2002 NUMBER	2000-2002 RATE*	2002 NUMBER	2002 RATE*	2000-2002 NUMBER	2000-2002 RATE*	2002 NUMBER	2002 RATE*	2000-2002 NUMBER	2000-2002 RATE*
BIRTH RATES (1)												
CRUDE BIRTH RATE	19	8.1	55	7.7								
TEEN BIRTH RATE												
15-17	0	0.0	0	0.0								
18-19	0	0.0	4	64.5 *								
15-19	0	0.0	4	15.4 *								
FERTILITY RATE	19	45.0	55	41.2								

	TOTAL				WHITE				NATIVE			
	2002 NUMBER	2002 %	2000-2002 NUMBER	2000-2002 %	2002 NUMBER	2002 %	2000-2002 NUMBER	2000-2002 %	2002 NUMBER	2002 %	2000-2002 NUMBER	2000-2002 %
BIRTHS												
WITHIN AREA	0	0.0	3	100.0	0	0.0	2	66.7	0	0.0	0	0.0
TO RESIDENTS	19	100.0	55	100.0	17	89.5	45	81.8	1	5.3	5	9.1
FACILITY												
HOSPITAL	8	42.1	29	52.7	7	41.2	24	53.3	1	100.0	5	100.0
BIRTHING CENTER	7	36.8	16	29.1	7	41.2	16	35.6	0	0.0	0	0.0
HOME	1	5.3	2	3.6	1	5.9	1	2.2	0	0.0	0	0.0
OTHER	0	0.0	1	1.8	0	0.0	1	2.2	0	0.0	0	0.0
OUTSIDE ALASKA	3	15.8	7	12.7	2	11.8	3	6.7	0	0.0	0	0.0
MOTHER CHARACTERISTICS												
AGE GROUP												
<15	0	0.0	0	0.0	**	**	0	0.0	**	**	0	0.0
15-19	0	0.0	4	7.3	**	**	2	4.4	**	**	2	40.0
20-24	4	21.1	12	21.8	**	**	10	22.2	**	**	2	40.0
25-29	5	26.3	11	20.0	**	**	9	20.0	**	**	1	20.0
30-34	8	42.1	14	25.5	**	**	11	24.4	**	**	0	0.0
35-39	1	5.3	12	21.8	**	**	11	24.4	**	**	0	0.0
40-44	1	5.3	2	3.6	**	**	2	4.4	**	**	0	0.0
45+	0	0.0	0	0.0	**	**	0	0.0	**	**	0	0.0
REPORTED DRINKING	1	6.7	2	4.3	**	**	2	4.8	**	**	0	0.0
REPORTED SMOKING	1	5.9	6	12.2	**	**	5	11.4	**	**	1	25.0
UNWED	4	23.5	14	28.0	**	**	12	27.3	**	**	2	40.0
EDUCATION												
<12 YEARS	0	0.0	3	6.1	**	**	1	2.3	**	**	2	40.0
12 YEARS	5	27.8	22	44.9	**	**	19	43.2	**	**	3	60.0
12+ YEARS	13	72.2	24	49.0	**	**	24	54.5	**	**	0	0.0
PRENATAL CARE												
TRIMESTER CARE BEGAN												
1ST TRIMESTER	16	94.1	36	78.3	**	**	33	78.6	**	**	3	75.0
3RD TRIMESTER	0	0.0	1	2.2	**	**	0	0.0	**	**	1	25.0
NO PRENATAL CARE	0	0.0	1	2.5	**	**	0	0.0	**	**	0	0.0
APNCU INDEX												
ADEQUATE+	6	42.9	16	40.0	**	**	16	43.2	**	**	0	0.0
ADEQUATE	5	35.7	12	30.0	**	**	12	32.4	**	**	0	0.0
INTERMEDIATE	2	14.3	6	15.0	**	**	5	13.5	**	**	1	50.0
INADEQUATE	1	7.1	6	15.0	**	**	4	10.8	**	**	1	50.0
KESSNER INDEX												
ADEQUATE	11	78.6	26	65.0	**	**	26	70.3	**	**	0	0.0
INTERMEDIATE	3	21.4	12	30.0	**	**	11	29.7	**	**	1	50.0
INADEQUATE	0	0.0	2	5.0	**	**	0	0.0	**	**	1	50.0
C-SECTION BIRTHS	5	29.4	14	28.6	**	**	13	29.5	**	**	1	25.0
PRE-TERM BIRTHS	1	5.6	3	6.1	**	**	3	6.8	**	**	0	0.0
LOW BIRTHWEIGHT	1	5.9	3	6.1	**	**	3	6.8	**	**	0	0.0

Note: Unknown responses are excluded from the denominator when calculating percentages.

(1) Rate per 1,000 population.

* Rates based on fewer than 10 occurrences are statistically unreliable and should be used with caution.

** Data suppressed for confidentiality concerns if total births to residents, by race, is less than five observations.

**TABLE 2 SELECTED BIRTH STATISTICS REPORTED BY MOTHER'S RACE:
2002 AND 2000-2002
JUNEAU BOROUGH**

	TOTAL				WHITE				NATIVE			
	2002 NUMBER	2002 RATE*	2000-2002 NUMBER	2000-2002 RATE*	2002 NUMBER	2002 RATE*	2000-2002 NUMBER	2000-2002 RATE*	2002 NUMBER	2002 RATE*	2000-2002 NUMBER	2000-2002 RATE*
BIRTH RATES (1)												
CRUDE BIRTH RATE	391	12.6	1,232	13.3								
TEEN BIRTH RATE												
15-17	6	8.5 *	24	11.1								
18-19	36	81.1	102	80.6								
15-19	42	36.5	126	36.8								
FERTILITY RATE	391	58.2	1,232	60.1								

	TOTAL				WHITE				NATIVE			
	2002 NUMBER	2002 %	2000-2002 NUMBER	2000-2002 %	2002 NUMBER	2002 %	2000-2002 NUMBER	2000-2002 %	2002 NUMBER	2002 %	2000-2002 NUMBER	2000-2002 %
BIRTHS												
WITHIN AREA	405	100.0	1,272	100.0	282	69.6	883	69.4	93	23.0	277	21.8
TO RESIDENTS	391	100.0	1,232	100.0	276	70.6	860	69.8	86	22.0	258	20.9
FACILITY												
HOSPITAL	320	81.8	1,034	83.9	216	78.3	700	81.4	78	90.7	235	91.1
BIRTHING CENTER	41	10.5	123	10.0	34	12.3	96	11.2	5	5.8	17	6.6
HOME	16	4.1	41	3.3	15	5.4	38	4.4	1	1.2	2	0.8
OTHER	0	0.0	0	0.0	0	0.0	0	0.0	0	0.0	0	0.0
OUTSIDE ALASKA	14	3.6	34	2.8	11	4.0	26	3.0	2	2.3	4	1.6
MOTHER CHARACTERISTICS												
AGE GROUP												
<15	1	0.3	1	0.1	0	0.0	0	0.0	1	1.2	1	0.4
15-19	42	10.8	126	10.2	26	9.5	68	7.9	14	16.3	50	19.4
20-24	91	23.3	276	22.4	56	20.4	176	20.5	31	36.0	81	31.4
25-29	97	24.9	316	25.7	73	26.5	225	26.2	15	17.4	58	22.5
30-34	93	23.8	291	23.7	72	26.2	223	26.0	12	14.0	32	12.4
35-39	49	12.6	175	14.2	38	13.8	138	16.1	10	11.6	27	10.5
40-44	17	4.4	44	3.6	10	3.6	27	3.1	3	3.5	9	3.5
45+	0	0.0	1	0.1	0	0.0	1	0.1	0	0.0	0	0.0
REPORTED DRINKING	6	1.6	29	2.5	2	0.8	17	2.1	3	3.8	9	3.6
REPORTED SMOKING	48	12.6	177	14.8	26	9.6	111	13.3	20	24.1	58	22.9
UNWED	130	33.4	400	32.6	71	25.9	205	24.0	55	64.0	168	65.1
EDUCATION												
<12 YEARS	42	11.5	130	11.7	23	8.9	56	7.2	19	23.2	68	28.2
12 YEARS	113	31.0	421	37.8	63	24.5	255	32.9	41	50.0	123	51.0
12+ YEARS	210	57.5	562	50.5	171	66.5	464	59.9	22	26.8	50	20.7
PRENATAL CARE												
TRIMESTER CARE BEGAN												
1ST TRIMESTER	310	90.4	999	90.1	230	91.3	727	91.6	61	89.7	187	85.4
3RD TRIMESTER	3	0.9	14	1.3	1	0.4	8	1.0	1	1.5	4	1.8
NO PRENATAL CARE	0	0.0	4	0.4	0	0.0	4	0.6	0	0.0	0	0.0
APNCU INDEX												
ADEQUATE+	136	50.2	344	37.1	105	52.2	268	40.0	20	40.8	49	28.7
ADEQUATE	104	38.4	357	38.6	76	37.8	263	39.3	20	40.8	63	36.8
INTERMEDIATE	21	7.7	163	17.6	12	6.0	100	14.9	7	14.3	41	24.0
INADEQUATE	10	3.7	62	6.7	8	4.0	39	5.8	2	4.1	18	10.5
KESSNER INDEX												
ADEQUATE	239	87.9	768	82.7	182	90.5	577	86.0	39	79.6	123	71.5
INTERMEDIATE	30	11.0	143	15.4	18	9.0	82	12.2	9	18.4	45	26.2
INADEQUATE	3	1.1	18	1.9	1	0.5	12	1.8	1	2.0	4	2.3
C-SECTION BIRTHS	115	29.9	355	29.2	86	31.7	255	30.1	20	23.8	64	25.1
PRE-TERM BIRTHS	32	8.5	92	7.6	17	6.2	46	5.4	10	13.2	32	13.2
LOW BIRTHWEIGHT	17	4.3	51	4.1	13	4.7	33	3.8	4	4.7	14	5.4

Note: Unknown responses are excluded from the denominator when calculating percentages.

(1) Rate per 1,000 population.

* Rates based on fewer than 10 occurrences are statistically unreliable and should be used with caution.

** Data suppressed for confidentiality concerns if total births to residents, by race, is less than five observations.

TABLE 2 **SELECTED BIRTH STATISTICS REPORTED BY MOTHER'S RACE:**
2002 AND 2000-2002
KENAI PENINSULA BOROUGH

	TOTAL				WHITE				NATIVE			
	2002 NUMBER	2002 RATE*	2000-2002 NUMBER	2000-2002 RATE*	2002 NUMBER	2002 RATE*	2000-2002 NUMBER	2000-2002 RATE*	2002 NUMBER	2002 RATE*	2000-2002 NUMBER	2000-2002 RATE*
BIRTH RATES (1)												
CRUDE BIRTH RATE	643	12.6	1,873	12.4								
TEEN BIRTH RATE												
15-17	17	11.6	52	12.1								
18-19	46	65.1	145	74.4								
15-19	63	29.0	197	31.6								
FERTILITY RATE	643	62.6	1,873	61.4								

	TOTAL				WHITE				NATIVE			
	2002 NUMBER	2002 %	2000-2002 NUMBER	2000-2002 %	2002 NUMBER	2002 %	2000-2002 NUMBER	2000-2002 %	2002 NUMBER	2002 %	2000-2002 NUMBER	2000-2002 %
BIRTHS												
WITHIN AREA	541	100.0	1,593	100.0	473	87.4	1,403	88.1	47	8.7	130	8.2
TO RESIDENTS	643	100.0	1,873	100.0	546	84.9	1,621	86.5	71	11.0	180	9.6
FACILITY												
HOSPITAL	604	93.9	1,742	93.0	510	93.4	1,496	92.3	71	100.0	178	98.9
BIRTHING CENTER	16	2.5	58	3.1	14	2.6	55	3.4	0	0.0	1	0.6
HOME	17	2.6	60	3.2	17	3.1	58	3.6	0	0.0	1	0.6
OTHER	3	0.5	3	0.2	3	0.5	3	0.2	0	0.0	0	0.0
OUTSIDE ALASKA	3	0.5	10	0.5	2	0.4	9	0.6	0	0.0	0	0.0
MOTHER CHARACTERISTICS												
AGE GROUP												
<15	1	0.2	1	0.1	1	0.2	1	0.1	0	0.0	0	0.0
15-19	63	9.8	197	10.5	52	9.5	169	10.4	9	12.7	22	12.2
20-24	193	30.0	534	28.5	161	29.5	461	28.4	26	36.6	58	32.2
25-29	175	27.2	510	27.2	152	27.8	446	27.5	17	23.9	45	25.0
30-34	124	19.3	365	19.5	102	18.7	308	19.0	14	19.7	36	20.0
35-39	69	10.7	205	10.9	62	11.4	183	11.3	4	5.6	14	7.8
40-44	16	2.5	58	3.1	14	2.6	51	3.1	1	1.4	4	2.2
45+	2	0.3	3	0.2	2	0.4	2	0.1	0	0.0	1	0.6
REPORTED DRINKING	9	1.4	38	2.0	8	1.5	32	2.0	0	0.0	4	2.2
REPORTED SMOKING	108	17.1	321	17.3	80	14.8	257	15.9	26	36.6	58	32.2
UNWED	184	28.7	508	27.2	139	25.5	413	25.5	38	53.5	78	43.3
EDUCATION												
<12 YEARS	90	14.4	236	13.0	71	13.3	200	12.6	17	23.9	32	18.0
12 YEARS	255	40.8	779	42.8	210	39.3	661	41.7	40	56.3	99	55.6
12+ YEARS	280	44.8	807	44.3	254	47.5	723	45.6	14	19.7	47	26.4
PRENATAL CARE												
TRIMESTER CARE BEGAN												
1ST TRIMESTER	514	82.9	1,480	81.7	441	83.1	1,285	81.8	54	79.4	142	81.1
3RD TRIMESTER	21	3.4	58	3.2	18	3.4	49	3.1	3	4.4	5	2.9
NO PRENATAL CARE	2	0.3	13	0.7	2	0.4	13	0.8	0	0.0	0	0.0
APNCU INDEX												
ADEQUATE+	134	22.6	418	23.6	117	23.2	368	24.0	12	18.2	35	20.2
ADEQUATE	254	42.9	781	44.2	220	43.6	680	44.4	27	40.9	76	43.9
INTERMEDIATE	130	22.0	331	18.7	107	21.2	279	18.2	16	24.2	39	22.5
INADEQUATE	74	12.5	238	13.5	61	12.1	204	13.3	11	16.7	23	13.3
KESSNER INDEX												
ADEQUATE	427	72.0	1,262	71.3	368	72.7	1,101	71.8	44	66.7	116	67.1
INTERMEDIATE	143	24.1	437	24.7	118	23.3	370	24.1	19	28.8	52	30.1
INADEQUATE	23	3.9	71	4.0	20	4.0	62	4.0	3	4.5	5	2.9
C-SECTION BIRTHS	126	19.8	380	20.5	107	19.7	325	20.2	13	18.3	39	21.7
PRE-TERM BIRTHS	65	10.2	177	9.5	51	9.4	149	9.2	7	9.9	16	8.9
LOW BIRTHWEIGHT	37	5.8	86	4.6	29	5.3	71	4.4	3	4.2	6	3.3

Note: Unknown responses are excluded from the denominator when calculating percentages.
 (1) Rate per 1,000 population.
 * Rates based on fewer than 10 occurrences are statistically unreliable and should be used with caution.
 ** Data suppressed for confidentiality concerns if total births to residents, by race, is less than five observations.

**TABLE 2 SELECTED BIRTH STATISTICS REPORTED BY MOTHER'S RACE:
2002 AND 2000-2002
KETCHIKAN GATEWAY BOROUGH**

	TOTAL				WHITE				NATIVE			
	2002 NUMBER	2002 RATE*	2000-2002 NUMBER	2000-2002 RATE*	2002 NUMBER	2002 RATE*	2000-2002 NUMBER	2000-2002 RATE*	2002 NUMBER	2002 RATE*	2000-2002 NUMBER	2000-2002 RATE*
BIRTH RATES (1)												
CRUDE BIRTH RATE	181	13.2	537	12.9								
TEEN BIRTH RATE												
15-17	3	8.5 *	21	19.9								
18-19	11	56.4	48	88.1								
15-19	14	25.5	69	43.1								
FERTILITY RATE	181	62.8	537	60.7								

	TOTAL				WHITE				NATIVE			
	2002 NUMBER	2002 %	2000-2002 NUMBER	2000-2002 %	2002 NUMBER	2002 %	2000-2002 NUMBER	2000-2002 %	2002 NUMBER	2002 %	2000-2002 NUMBER	2000-2002 %
BIRTHS												
WITHIN AREA	256	100.0	779	100.0	153	59.8	484	62.1	75	29.3	238	30.6
TO RESIDENTS	181	100.0	537	100.0	114	63.0	367	68.3	45	24.9	120	22.3
FACILITY												
HOSPITAL	170	93.9	504	93.9	105	92.1	340	92.6	44	97.8	119	99.2
BIRTHING CENTER	0	0.0	0	0.0	0	0.0	0	0.0	0	0.0	0	0.0
HOME	8	4.4	16	3.0	6	5.3	13	3.5	1	2.2	1	0.8
OTHER	0	0.0	0	0.0	0	0.0	0	0.0	0	0.0	0	0.0
OUTSIDE ALASKA	3	1.7	17	3.2	3	2.6	14	3.8	0	0.0	0	0.0
MOTHER CHARACTERISTICS												
AGE GROUP												
<15	0	0.0	0	0.0	0	0.0	0	0.0	0	0.0	0	0.0
15-19	14	7.7	69	12.8	6	5.3	36	9.8	7	15.6	25	20.8
20-24	62	34.3	145	27.0	41	36.0	91	24.8	14	31.1	40	33.3
25-29	50	27.6	144	26.8	31	27.2	102	27.8	13	28.9	27	22.5
30-34	39	21.5	123	22.9	26	22.8	93	25.3	8	17.8	20	16.7
35-39	15	8.3	42	7.8	9	7.9	32	8.7	3	6.7	7	5.8
40-44	1	0.6	13	2.4	1	0.9	12	3.3	0	0.0	1	0.8
45+	0	0.0	1	0.2	0	0.0	1	0.3	0	0.0	0	0.0
REPORTED DRINKING	1	0.6	11	2.1	1	0.9	8	2.3	0	0.0	3	2.5
REPORTED SMOKING	44	24.3	128	24.0	30	26.3	88	24.2	12	26.7	34	28.3
UNWED	65	35.9	198	36.9	38	33.3	114	31.1	24	53.3	71	59.2
EDUCATION												
<12 YEARS	21	12.7	80	15.7	10	9.1	37	10.3	10	25.0	33	29.5
12 YEARS	74	44.6	215	42.1	48	43.6	145	40.4	19	47.5	57	50.9
12+ YEARS	71	42.8	216	42.3	52	47.3	177	49.3	11	27.5	22	19.6
PRENATAL CARE												
TRIMESTER CARE BEGAN												
1ST TRIMESTER	147	83.5	427	85.2	98	87.5	311	89.1	32	76.2	80	75.5
3RD TRIMESTER	4	2.3	7	1.4	3	2.7	3	0.9	1	2.4	4	3.8
NO PRENATAL CARE	0	0.0	0	0.0	0	0.0	0	0.0	0	0.0	0	0.0
APNCU INDEX												
ADEQUATE+	72	41.6	185	37.6	49	44.5	135	39.0	17	41.5	37	36.6
ADEQUATE	78	45.1	235	47.8	49	44.5	167	48.3	16	39.0	44	43.6
INTERMEDIATE	9	5.2	36	7.3	5	4.5	27	7.8	4	9.8	6	5.9
INADEQUATE	14	8.1	36	7.3	7	6.4	17	4.9	4	9.8	14	13.9
KESSNER INDEX												
ADEQUATE	136	78.2	397	80.5	93	83.8	297	85.6	27	65.9	69	68.3
INTERMEDIATE	34	19.5	89	18.1	15	13.5	47	13.5	13	31.7	28	27.7
INADEQUATE	4	2.3	7	1.4	3	2.7	3	0.9	1	2.4	4	4.0
C-SECTION BIRTHS	46	25.4	103	19.2	32	28.1	73	19.9	8	17.8	19	15.8
PRE-TERM BIRTHS	17	9.4	51	9.6	7	6.1	29	7.9	6	13.3	15	12.6
LOW BIRTHWEIGHT	11	6.1	27	5.0	7	6.1	19	5.2	2	4.4	4	3.3

Note: Unknown responses are excluded from the denominator when calculating percentages.

(1) Rate per 1,000 population.

* Rates based on fewer than 10 occurrences are statistically unreliable and should be used with caution.

** Data suppressed for confidentiality concerns if total births to residents, by race, is less than five observations.

TABLE 2 **SELECTED BIRTH STATISTICS REPORTED BY MOTHER'S RACE:**
2002 AND 2000-2002
KODIAK ISLAND BOROUGH

	TOTAL				WHITE				NATIVE			
	2002 NUMBER	2002 RATE*	2000-2002 NUMBER	2000-2002 RATE*	2002 NUMBER	2002 RATE*	2000-2002 NUMBER	2000-2002 RATE*	2002 NUMBER	2002 RATE*	2000-2002 NUMBER	2000-2002 RATE*
BIRTH RATES (1)												
CRUDE BIRTH RATE	212	15.3	659	15.7								
TEEN BIRTH RATE												
15-17	3	8.8 *	11	10.7								
18-19	13	73.9	27	53.9								
15-19	16	31.0	38	24.8								
FERTILITY RATE	212	72.5	659	72.9								

	TOTAL				WHITE				NATIVE			
	2002 NUMBER	2002 %	2000-2002 NUMBER	2000-2002 %	2002 NUMBER	2002 %	2000-2002 NUMBER	2000-2002 %	2002 NUMBER	2002 %	2000-2002 NUMBER	2000-2002 %
BIRTHS												
WITHIN AREA	194	100.0	608	100.0	124	63.9	371	61.0	21	10.8	90	14.8
TO RESIDENTS	212	100.0	659	100.0	132	62.3	394	59.8	27	12.7	110	16.7
FACILITY												
HOSPITAL	206	97.2	640	97.1	126	95.5	376	95.4	27	100.0	109	99.1
BIRTHING CENTER	0	0.0	0	0.0	0	0.0	0	0.0	0	0.0	0	0.0
HOME	5	2.4	17	2.6	5	3.8	16	4.1	0	0.0	1	0.9
OTHER	0	0.0	0	0.0	0	0.0	0	0.0	0	0.0	0	0.0
OUTSIDE ALASKA	1	0.5	2	0.3	1	0.8	2	0.5	0	0.0	0	0.0
MOTHER CHARACTERISTICS												
AGE GROUP												
<15	0	0.0	1	0.2	0	0.0	1	0.3	0	0.0	0	0.0
15-19	16	7.5	38	5.8	12	9.1	23	5.8	3	11.1	10	9.1
20-24	50	23.6	169	25.6	33	25.0	98	24.9	7	25.9	33	30.0
25-29	62	29.2	174	26.4	37	28.0	104	26.4	8	29.6	33	30.0
30-34	44	20.8	153	23.2	25	18.9	96	24.4	6	22.2	19	17.3
35-39	26	12.3	89	13.5	16	12.1	53	13.5	2	7.4	10	9.1
40-44	12	5.7	33	5.0	7	5.3	17	4.3	1	3.7	5	4.5
45+	2	0.9	2	0.3	2	1.5	2	0.5	0	0.0	0	0.0
REPORTED DRINKING	5	2.4	13	2.0	4	3.1	6	1.5	1	3.8	7	6.7
REPORTED SMOKING	21	10.1	88	13.6	13	9.9	45	11.5	4	15.4	37	35.2
UNWED	49	23.1	165	25.0	24	18.2	69	17.5	9	33.3	41	37.3
EDUCATION												
<12 YEARS	18	8.9	72	11.2	13	10.1	32	8.2	2	7.4	16	14.5
12 YEARS	78	38.6	244	37.9	42	32.6	126	32.4	13	48.1	55	50.0
12+ YEARS	106	52.5	327	50.9	74	57.4	231	59.4	12	44.4	39	35.5
PRENATAL CARE												
TRIMESTER CARE BEGAN												
1ST TRIMESTER	173	83.2	531	81.6	114	87.0	338	86.4	22	84.6	89	82.4
3RD TRIMESTER	3	1.4	17	2.6	1	0.8	9	2.3	0	0.0	2	1.9
NO PRENATAL CARE	1	0.5	1	0.2	0	0.0	0	0.0	0	0.0	0	0.0
APNCU INDEX												
ADEQUATE+	36	17.6	113	17.6	19	14.8	67	17.4	10	40.0	24	23.1
ADEQUATE	81	39.7	239	37.2	57	44.5	159	41.2	6	24.0	33	31.7
INTERMEDIATE	63	30.9	202	31.5	43	33.6	122	31.6	7	28.0	31	29.8
INADEQUATE	24	11.8	88	13.7	9	7.0	38	9.8	2	8.0	16	15.4
KESSNER INDEX												
ADEQUATE	134	65.7	416	64.8	94	73.4	279	72.3	18	72.0	70	67.3
INTERMEDIATE	66	32.4	208	32.4	33	25.8	98	25.4	7	28.0	32	30.8
INADEQUATE	4	2.0	18	2.8	1	0.8	9	2.3	0	0.0	2	1.9
C-SECTION BIRTHS	41	19.5	121	18.4	22	16.8	71	18.1	8	30.8	25	22.9
PRE-TERM BIRTHS	20	9.5	67	10.2	8	6.1	31	7.9	3	11.5	12	11.0
LOW BIRTHWEIGHT	11	5.2	39	5.9	6	4.6	20	5.1	0	0.0	3	2.8

Note: Unknown responses are excluded from the denominator when calculating percentages.

(1) Rate per 1,000 population.

* Rates based on fewer than 10 occurrences are statistically unreliable and should be used with caution.

** Data suppressed for confidentiality concerns if total births to residents, by race, is less than five observations.

**TABLE 2 SELECTED BIRTH STATISTICS REPORTED BY MOTHER'S RACE:
2002 AND 2000-2002
LAKE AND PENINSULA BOROUGH**

	TOTAL				WHITE				NATIVE			
	2002 NUMBER	2002 RATE*	2000-2002 NUMBER	2000-2002 RATE*	2002 NUMBER	2002 RATE*	2000-2002 NUMBER	2000-2002 RATE*	2002 NUMBER	2002 RATE*	2000-2002 NUMBER	2000-2002 RATE*
BIRTH RATES (1)												
CRUDE BIRTH RATE	23	14.0	65	12.5								
TEEN BIRTH RATE												
15-17	2	37.0 *	6	35.1 *								
18-19	2	80.0 *	5	66.7 *								
15-19	4	50.6 *	11	44.7								
FERTILITY RATE	23	70.8	65	62.9								

	TOTAL				WHITE				NATIVE			
	2002 NUMBER	2002 %	2000-2002 NUMBER	2000-2002 %	2002 NUMBER	2002 %	2000-2002 NUMBER	2000-2002 %	2002 NUMBER	2002 %	2000-2002 NUMBER	2000-2002 %
BIRTHS												
WITHIN AREA	0	0.0	2	100.0	0	0.0	0	0.0	0	0.0	2	100.0
TO RESIDENTS	23	100.0	65	100.0	9	39.1	22	33.8	13	56.5	40	61.5
FACILITY												
HOSPITAL	22	95.7	58	89.2	8	88.9	17	77.3	13	100.0	38	95.0
BIRTHING CENTER	1	4.3	3	4.6	1	11.1	3	13.6	0	0.0	0	0.0
HOME	0	0.0	3	4.6	0	0.0	1	4.5	0	0.0	2	5.0
OTHER	0	0.0	0	0.0	0	0.0	0	0.0	0	0.0	0	0.0
OUTSIDE ALASKA	0	0.0	1	1.5	0	0.0	1	4.5	0	0.0	0	0.0
MOTHER CHARACTERISTICS												
AGE GROUP												
<15	0	0.0	0	0.0	0	0.0	0	0.0	0	0.0	0	0.0
15-19	4	17.4	11	16.9	0	0.0	0	0.0	4	30.8	11	27.5
20-24	7	30.4	21	32.3	1	11.1	3	13.6	6	46.2	16	40.0
25-29	4	17.4	15	23.1	2	22.2	6	27.3	2	15.4	9	22.5
30-34	5	21.7	10	15.4	4	44.4	7	31.8	0	0.0	2	5.0
35-39	3	13.0	7	10.8	2	22.2	5	22.7	1	7.7	2	5.0
40-44	0	0.0	1	1.5	0	0.0	1	4.5	0	0.0	0	0.0
45+	0	0.0	0	0.0	0	0.0	0	0.0	0	0.0	0	0.0
REPORTED DRINKING	2	8.7	6	9.5	2	22.2	2	9.5	0	0.0	4	10.3
REPORTED SMOKING	9	39.1	25	38.5	0	0.0	0	0.0	9	69.2	24	60.0
UNWED	10	43.5	29	44.6	0	0.0	0	0.0	10	76.9	28	70.0
EDUCATION												
<12 YEARS	3	13.0	14	21.5	0	0.0	1	4.5	3	23.1	12	30.0
12 YEARS	11	47.8	35	53.8	2	22.2	7	31.8	9	69.2	27	67.5
12+ YEARS	9	39.1	16	24.6	7	77.8	14	63.6	1	7.7	1	2.5
PRENATAL CARE												
TRIMESTER CARE BEGAN												
1ST TRIMESTER	15	68.2	46	73.0	7	77.8	16	72.7	7	58.3	28	73.7
3RD TRIMESTER	1	4.5	1	1.6	0	0.0	0	0.0	1	8.3	1	2.6
NO PRENATAL CARE	0	0.0	3	4.7	0	0.0	1	4.5	0	0.0	2	5.1
APNCU INDEX												
ADEQUATE+	7	31.8	25	39.1	2	22.2	6	27.3	4	33.3	17	43.6
ADEQUATE	1	4.5	7	10.9	1	11.1	2	9.1	0	0.0	5	12.8
INTERMEDIATE	6	27.3	15	23.4	2	22.2	7	31.8	4	33.3	8	20.5
INADEQUATE	8	36.4	17	26.6	4	44.4	7	31.8	4	33.3	9	23.1
KESSNER INDEX												
ADEQUATE	9	40.9	32	50.0	3	33.3	7	31.8	5	41.7	23	59.0
INTERMEDIATE	12	54.5	28	43.8	6	66.7	14	63.6	6	50.0	13	33.3
INADEQUATE	1	4.5	4	6.3	0	0.0	0	0.0	1	8.3	3	7.7
C-SECTION BIRTHS	2	8.7	3	4.6	2	22.2	2	9.1	0	0.0	1	2.5
PRE-TERM BIRTHS	1	4.3	6	9.2	1	11.1	3	13.6	0	0.0	3	7.5
LOW BIRTHWEIGHT	1	4.3	4	6.2	1	11.1	3	13.6	0	0.0	1	2.5

Note: Unknown responses are excluded from the denominator when calculating percentages.

(1) Rate per 1,000 population.

* Rates based on fewer than 10 occurrences are statistically unreliable and should be used with caution.

** Data suppressed for confidentiality concerns if total births to residents, by race, is less than five observations.

TABLE 2 **SELECTED BIRTH STATISTICS REPORTED BY MOTHER'S RACE:**
2002 AND 2000-2002
MATANUSKA-SUSITNA BOROUGH

	TOTAL				WHITE				NATIVE			
	2002 NUMBER	2002 RATE*	2000-2002 NUMBER	2000-2002 RATE*	2002 NUMBER	2002 RATE*	2000-2002 NUMBER	2000-2002 RATE*	2002 NUMBER	2002 RATE*	2000-2002 NUMBER	2000-2002 RATE*
BIRTH RATES (1)												
CRUDE BIRTH RATE	833	12.8	2,515	13.5								
TEEN BIRTH RATE												
15-17	30	15.3	78	14.0								
18-19	52	53.9	172	66.1								
15-19	82	28.0	250	30.7								
FERTILITY RATE	833	59.3	2,515	62.1								

	TOTAL				WHITE				NATIVE			
	2002 NUMBER	2002 %	2000-2002 NUMBER	2000-2002 %	2002 NUMBER	2002 %	2000-2002 NUMBER	2000-2002 %	2002 NUMBER	2002 %	2000-2002 NUMBER	2000-2002 %
BIRTHS												
WITHIN AREA	571	100.0	1,677	100.0	538	94.2	1,563	93.2	19	3.3	63	3.8
TO RESIDENTS	833	100.0	2,515	100.0	748	89.8	2,245	89.3	60	7.2	188	7.5
FACILITY												
HOSPITAL	733	88.0	2,220	88.3	652	87.2	1,967	87.6	59	98.3	182	96.8
BIRTHING CENTER	75	9.0	235	9.3	72	9.6	224	10.0	1	1.7	3	1.6
HOME	21	2.5	49	1.9	20	2.7	45	2.0	0	0.0	2	1.1
OTHER	0	0.0	0	0.0	0	0.0	0	0.0	0	0.0	0	0.0
OUTSIDE ALASKA	4	0.5	11	0.4	4	0.5	9	0.4	0	0.0	1	0.5
MOTHER CHARACTERISTICS												
AGE GROUP												
<15	3	0.4	4	0.2	3	0.4	4	0.2	0	0.0	0	0.0
15-19	82	9.9	250	9.9	72	9.7	212	9.5	8	13.3	30	16.0
20-24	228	27.4	686	27.3	202	27.1	613	27.3	17	28.3	55	29.3
25-29	231	27.8	692	27.5	210	28.2	622	27.7	17	28.3	50	26.6
30-34	173	20.8	511	20.3	154	20.6	458	20.4	13	21.7	34	18.1
35-39	89	10.7	290	11.5	81	10.9	260	11.6	5	8.3	18	9.6
40-44	24	2.9	77	3.1	23	3.1	71	3.2	0	0.0	1	0.5
45+	1	0.1	3	0.1	1	0.1	3	0.1	0	0.0	0	0.0
REPORTED DRINKING	11	1.3	43	1.7	8	1.1	37	1.7	2	3.3	4	2.2
REPORTED SMOKING	164	19.8	499	20.0	146	19.6	442	19.8	17	28.3	49	26.6
UNWED	232	27.9	732	29.1	201	26.9	627	27.9	23	38.3	84	44.7
EDUCATION												
<12 YEARS	85	10.6	280	11.5	73	10.1	236	10.8	10	16.9	35	19.1
12 YEARS	378	47.2	1,095	45.2	338	46.8	979	44.9	29	49.2	91	49.7
12+ YEARS	338	42.2	1,050	43.3	311	43.1	963	44.2	20	33.9	57	31.1
PRENATAL CARE												
TRIMESTER CARE BEGAN												
1ST TRIMESTER	630	77.5	1,935	78.6	566	77.5	1,742	79.1	42	72.4	134	73.6
3RD TRIMESTER	45	5.5	100	4.1	40	5.5	83	3.8	3	5.2	9	4.9
NO PRENATAL CARE	5	0.6	7	0.3	5	0.7	6	0.3	0	0.0	1	0.6
APNCU INDEX												
ADEQUATE+	244	31.1	761	31.8	221	31.2	684	32.0	14	25.0	58	32.2
ADEQUATE	336	42.8	1,074	44.9	311	43.9	977	45.7	18	32.1	66	36.7
INTERMEDIATE	81	10.3	237	9.9	68	9.6	204	9.5	10	17.9	21	11.7
INADEQUATE	124	15.8	322	13.5	108	15.3	275	12.9	14	25.0	35	19.4
KESSNER INDEX												
ADEQUATE	566	71.9	1,764	73.6	516	72.7	1,595	74.5	34	60.7	120	66.7
INTERMEDIATE	171	21.7	525	21.9	149	21.0	458	21.4	19	33.9	50	27.8
INADEQUATE	50	6.4	107	4.5	45	6.3	89	4.2	3	5.4	10	5.6
C-SECTION BIRTHS	174	21.3	525	21.4	167	22.7	482	22.0	4	6.8	26	14.0
PRE-TERM BIRTHS	78	9.4	248	9.9	69	9.3	211	9.4	5	8.5	28	15.2
LOW BIRTHWEIGHT	43	5.2	153	6.1	40	5.4	130	5.8	2	3.4	20	10.8

Note: Unknown responses are excluded from the denominator when calculating percentages.
 (1) Rate per 1,000 population.
 * Rates based on fewer than 10 occurrences are statistically unreliable and should be used with caution.
 ** Data suppressed for confidentiality concerns if total births to residents, by race, is less than five observations.

**TABLE 2 SELECTED BIRTH STATISTICS REPORTED BY MOTHER'S RACE:
2002 AND 2000-2002
NOME CENSUS AREA**

	TOTAL				WHITE				NATIVE			
	2002 NUMBER	2002 RATE*	2000-2002 NUMBER	2000-2002 RATE*	2002 NUMBER	2002 RATE*	2000-2002 NUMBER	2000-2002 RATE*	2002 NUMBER	2002 RATE*	2000-2002 NUMBER	2000-2002 RATE*
BIRTH RATES (1)												
CRUDE BIRTH RATE	212	22.7	637	22.9								
TEEN BIRTH RATE												
15-17	17	58.4	45	52.0								
18-19	20	156.3	64	187.7								
15-19	37	88.3	109	90.3								
FERTILITY RATE	212	114.1	637	113.5								

	TOTAL				WHITE				NATIVE			
	2002 NUMBER	2002 %	2000-2002 NUMBER	2000-2002 %	2002 NUMBER	2002 %	2000-2002 NUMBER	2000-2002 %	2002 NUMBER	2002 %	2000-2002 NUMBER	2000-2002 %
BIRTHS												
WITHIN AREA	99	100.0	309	100.0	4	4.0	14	4.5	92	92.9	290	93.9
TO RESIDENTS	212	100.0	637	100.0	23	10.8	78	12.2	185	87.3	553	86.8
FACILITY												
HOSPITAL	208	98.1	621	97.5	21	91.3	68	87.2	184	99.5	548	99.1
BIRTHING CENTER	0	0.0	3	0.5	0	0.0	2	2.6	0	0.0	1	0.2
HOME	1	0.5	2	0.3	0	0.0	1	1.3	0	0.0	0	0.0
OTHER	1	0.5	4	0.6	0	0.0	0	0.0	1	0.5	4	0.7
OUTSIDE ALASKA	2	0.9	7	1.1	2	8.7	7	9.0	0	0.0	0	0.0
MOTHER CHARACTERISTICS												
AGE GROUP												
<15	2	0.9	6	0.9	0	0.0	0	0.0	2	1.1	6	1.1
15-19	37	17.5	109	17.1	1	4.3	2	2.6	36	19.5	107	19.3
20-24	50	23.6	186	29.2	7	30.4	18	23.1	42	22.7	166	30.0
25-29	62	29.2	167	26.2	2	8.7	18	23.1	58	31.4	147	26.6
30-34	37	17.5	98	15.4	9	39.1	24	30.8	28	15.1	73	13.2
35-39	19	9.0	59	9.3	4	17.4	14	17.9	14	7.6	44	8.0
40-44	5	2.4	12	1.9	0	0.0	2	2.6	5	2.7	10	1.8
45+	0	0.0	0	0.0	0	0.0	0	0.0	0	0.0	0	0.0
REPORTED DRINKING	22	10.5	55	8.8	0	0.0	2	2.7	22	12.0	53	9.8
REPORTED SMOKING	109	51.9	308	49.1	2	8.7	9	11.7	107	58.2	298	54.7
UNWED	135	63.7	390	61.4	5	21.7	13	16.9	130	70.3	377	68.3
EDUCATION												
<12 YEARS	63	30.4	159	25.7	3	14.3	5	6.6	60	32.6	154	28.6
12 YEARS	117	56.5	358	57.9	5	23.8	17	22.4	112	60.9	339	63.0
12+ YEARS	27	13.0	101	16.3	13	61.9	54	71.1	12	6.5	45	8.4
PRENATAL CARE												
TRIMESTER CARE BEGAN												
1ST TRIMESTER	157	77.3	497	81.3	20	90.9	69	92.0	134	75.3	423	79.7
3RD TRIMESTER	5	2.5	22	3.6	0	0.0	1	1.3	5	2.8	21	4.0
NO PRENATAL CARE	1	0.5	9	1.5	0	0.0	0	0.0	1	0.6	9	1.7
APNCU INDEX												
ADEQUATE+	56	27.6	137	22.3	7	31.8	16	21.6	49	27.5	121	22.7
ADEQUATE	58	28.6	217	35.4	11	50.0	34	45.9	44	24.7	180	33.7
INTERMEDIATE	56	27.6	161	26.3	3	13.6	19	25.7	53	29.8	140	26.2
INADEQUATE	33	16.3	98	16.0	1	4.5	5	6.8	32	18.0	93	17.4
KESSNER INDEX												
ADEQUATE	110	54.2	374	61.0	17	77.3	56	75.7	90	50.6	314	58.8
INTERMEDIATE	87	42.9	208	33.9	5	22.7	17	23.0	82	46.1	190	35.6
INADEQUATE	6	3.0	31	5.1	0	0.0	1	1.4	6	3.4	30	5.6
C-SECTION BIRTHS	11	5.3	39	6.3	3	13.0	11	14.7	8	4.4	28	5.2
PRE-TERM BIRTHS	29	13.9	80	12.7	0	0.0	5	6.5	29	15.8	75	13.7
LOW BIRTHWEIGHT	12	5.7	33	5.3	0	0.0	4	5.1	12	6.5	29	5.4

Note: Unknown responses are excluded from the denominator when calculating percentages.

(1) Rate per 1,000 population.

* Rates based on fewer than 10 occurrences are statistically unreliable and should be used with caution.

** Data suppressed for confidentiality concerns if total births to residents, by race, is less than five observations.

**TABLE 2 SELECTED BIRTH STATISTICS REPORTED BY MOTHER'S RACE:
2002 AND 2000-2002
NORTH SLOPE BOROUGH**

	TOTAL				WHITE				NATIVE			
	2002 NUMBER	2002 RATE*	2000-2002 NUMBER	2000-2002 RATE*	2002 NUMBER	2002 RATE*	2000-2002 NUMBER	2000-2002 RATE*	2002 NUMBER	2002 RATE*	2000-2002 NUMBER	2000-2002 RATE*
BIRTH RATES (1)												
CRUDE BIRTH RATE	168	23.2	486	22.2								
TEEN BIRTH RATE												
15-17	11	45.5	33	47.8								
18-19	23	172.9	59	167.1								
15-19	34	90.7	92	88.1								
FERTILITY RATE	168	108.2	486	103.4								

	TOTAL				WHITE				NATIVE			
	2002 NUMBER	2002 %	2000-2002 NUMBER	2000-2002 %	2002 NUMBER	2002 %	2000-2002 NUMBER	2000-2002 %	2002 NUMBER	2002 %	2000-2002 NUMBER	2000-2002 %
BIRTHS												
WITHIN AREA	25	100.0	99	100.0	0	0.0	2	2.0	23	92.0	87	87.9
TO RESIDENTS	168	100.0	486	100.0	10	6.0	39	8.0	149	88.7	410	84.4
FACILITY												
HOSPITAL	164	97.6	474	97.5	8	80.0	33	84.6	148	99.3	407	99.3
BIRTHING CENTER	0	0.0	0	0.0	0	0.0	0	0.0	0	0.0	0	0.0
HOME	0	0.0	0	0.0	0	0.0	0	0.0	0	0.0	0	0.0
OTHER	0	0.0	3	0.6	0	0.0	0	0.0	0	0.0	2	0.5
OUTSIDE ALASKA	4	2.4	9	1.9	2	20.0	6	15.4	1	0.7	1	0.2
MOTHER CHARACTERISTICS												
AGE GROUP												
<15	0	0.0	1	0.2	0	0.0	0	0.0	0	0.0	1	0.2
15-19	34	20.4	92	19.0	2	22.2	2	5.3	32	21.5	85	20.7
20-24	53	31.7	153	31.5	3	33.3	11	28.9	48	32.2	138	33.7
25-29	32	19.2	101	20.8	2	22.2	12	31.6	29	19.5	77	18.8
30-34	27	16.2	77	15.9	2	22.2	8	21.1	22	14.8	60	14.6
35-39	18	10.8	53	10.9	0	0.0	5	13.2	15	10.1	42	10.2
40-44	2	1.2	7	1.4	0	0.0	0	0.0	2	1.3	6	1.5
45+	1	0.6	1	0.2	0	0.0	0	0.0	1	0.7	1	0.2
REPORTED DRINKING	9	5.5	29	6.1	0	0.0	0	0.0	9	6.1	29	7.2
REPORTED SMOKING	82	49.1	213	44.3	1	10.0	4	10.5	81	54.4	207	50.7
UNWED	102	61.1	276	57.1	3	30.0	3	7.9	98	65.8	259	63.2
EDUCATION												
<12 YEARS	45	28.5	126	27.0	0	0.0	0	0.0	45	31.9	122	31.0
12 YEARS	90	57.0	262	56.2	5	55.6	18	47.4	81	57.4	229	58.3
12+ YEARS	23	14.6	78	16.7	4	44.4	20	52.6	15	10.6	42	10.7
PRENATAL CARE												
TRIMESTER CARE BEGAN												
1ST TRIMESTER	110	69.2	335	71.6	8	88.9	29	76.3	95	66.9	277	69.9
3RD TRIMESTER	17	10.7	45	9.6	1	11.1	3	7.9	16	11.3	40	10.1
NO PRENATAL CARE	2	1.3	5	1.1	0	0.0	0	0.0	2	1.4	5	1.3
APNCU INDEX												
ADEQUATE+	17	10.7	76	16.3	0	0.0	8	21.6	15	10.6	63	15.9
ADEQUATE	52	32.7	132	28.3	4	44.4	14	37.8	44	31.0	105	26.4
INTERMEDIATE	42	26.4	126	27.0	3	33.3	8	21.6	39	27.5	110	27.7
INADEQUATE	48	30.2	133	28.5	2	22.2	7	18.9	44	31.0	119	30.0
KESSNER INDEX												
ADEQUATE	63	39.4	214	45.5	6	66.7	25	65.8	51	35.7	169	42.5
INTERMEDIATE	78	48.8	206	43.8	2	22.2	10	26.3	74	51.7	184	46.2
INADEQUATE	19	11.9	50	10.6	1	11.1	3	7.9	18	12.6	45	11.3
C-SECTION BIRTHS	17	10.2	55	11.5	0	0.0	6	17.1	15	10.1	39	9.6
PRE-TERM BIRTHS	26	15.5	62	12.8	0	0.0	3	7.7	25	16.8	55	13.5
LOW BIRTHWEIGHT	12	7.2	32	6.6	0	0.0	2	5.1	10	6.8	26	6.4

Note: Unknown responses are excluded from the denominator when calculating percentages.

(1) Rate per 1,000 population.

* Rates based on fewer than 10 occurrences are statistically unreliable and should be used with caution.

** Data suppressed for confidentiality concerns if total births to residents, by race, is less than five observations.

TABLE 2 **SELECTED BIRTH STATISTICS REPORTED BY MOTHER'S RACE:**
2002 AND 2000-2002
NORTHWEST ARCTIC BOROUGH

	TOTAL				WHITE				NATIVE			
	2002 NUMBER	2002 RATE*	2000-2002 NUMBER	2000-2002 RATE*	2002 NUMBER	2002 RATE*	2000-2002 NUMBER	2000-2002 RATE*	2002 NUMBER	2002 RATE*	2000-2002 NUMBER	2000-2002 RATE*
BIRTH RATES (1)												
CRUDE BIRTH RATE	161	22.2	478	22.0								
TEEN BIRTH RATE												
15-17	12	49.6	35	49.6								
18-19	20	157.5	64	195.1								
15-19	32	86.7	99	95.8								
FERTILITY RATE	161	107.0	478	107.8								
	2002 NUMBER	2002 %	2000-2002 NUMBER	2000-2002 %	2002 NUMBER	2002 %	2000-2002 NUMBER	2000-2002 %	2002 NUMBER	2002 %	2000-2002 NUMBER	2000-2002 %
BIRTHS												
WITHIN AREA	84	100.0	279	100.0	4	4.8	9	3.2	80	95.2	270	96.8
TO RESIDENTS	161	100.0	478	100.0	16	9.9	31	6.5	144	89.4	444	92.9
FACILITY												
HOSPITAL	158	98.1	470	98.3	14	87.5	28	90.3	143	99.3	439	98.9
BIRTHING CENTER	1	0.6	1	0.2	1	6.3	1	3.2	0	0.0	0	0.0
HOME	1	0.6	3	0.6	0	0.0	0	0.0	1	0.7	3	0.7
OTHER	0	0.0	2	0.4	0	0.0	0	0.0	0	0.0	2	0.5
OUTSIDE ALASKA	1	0.6	2	0.4	1	6.3	2	6.5	0	0.0	0	0.0
MOTHER CHARACTERISTICS												
AGE GROUP												
<15	0	0.0	0	0.0	0	0.0	0	0.0	0	0.0	0	0.0
15-19	32	19.9	99	20.7	2	12.5	4	12.9	30	20.8	95	21.4
20-24	47	29.2	134	28.0	2	12.5	3	9.7	44	30.6	130	29.3
25-29	41	25.5	110	23.0	5	31.3	11	35.5	36	25.0	98	22.1
30-34	23	14.3	82	17.2	4	25.0	8	25.8	19	13.2	73	16.4
35-39	16	9.9	43	9.0	2	12.5	4	12.9	14	9.7	39	8.8
40-44	2	1.2	10	2.1	1	6.3	1	3.2	1	0.7	9	2.0
45+	0	0.0	0	0.0	0	0.0	0	0.0	0	0.0	0	0.0
REPORTED DRINKING	8	5.0	39	8.2	1	6.3	1	3.2	7	4.9	37	8.4
REPORTED SMOKING	84	52.8	239	50.3	1	6.3	3	9.7	83	58.0	236	53.4
UNWED	102	63.8	290	61.3	5	31.3	10	32.3	97	67.4	280	63.6
EDUCATION												
<12 YEARS	65	41.4	167	37.4	1	7.1	3	11.1	64	44.8	164	39.3
12 YEARS	73	46.5	236	52.9	1	7.1	3	11.1	72	50.3	233	55.9
12+ YEARS	19	12.1	43	9.6	12	85.7	21	77.8	7	4.9	20	4.8
PRENATAL CARE												
TRIMESTER CARE BEGAN												
1ST TRIMESTER	109	71.2	329	70.9	13	81.3	22	71.0	96	70.1	305	70.8
3RD TRIMESTER	10	6.5	31	6.7	2	12.5	3	9.7	8	5.8	28	6.5
NO PRENATAL CARE	0	0.0	3	0.7	0	0.0	0	0.0	0	0.0	3	0.7
APNCU INDEX												
ADEQUATE+	28	18.4	86	18.7	3	18.8	8	25.8	25	18.4	78	18.3
ADEQUATE	37	24.3	109	23.7	5	31.3	8	25.8	32	23.5	101	23.7
INTERMEDIATE	43	28.3	126	27.4	4	25.0	9	29.0	39	28.7	115	26.9
INADEQUATE	44	28.9	139	30.2	4	25.0	6	19.4	40	29.4	133	31.1
KESSNER INDEX												
ADEQUATE	60	39.5	196	42.5	10	62.5	17	54.8	50	36.8	178	41.6
INTERMEDIATE	82	53.9	231	50.1	4	25.0	11	35.5	78	57.4	219	51.2
INADEQUATE	10	6.6	34	7.4	2	12.5	3	9.7	8	5.9	31	7.2
C-SECTION BIRTHS	12	7.5	28	6.0	2	12.5	5	16.7	10	7.0	22	5.0
PRE-TERM BIRTHS	18	11.5	63	13.3	0	0.0	0	0.0	18	12.9	63	14.4
LOW BIRTHWEIGHT	13	8.1	32	6.7	0	0.0	0	0.0	13	9.0	32	7.2

Note: Unknown responses are excluded from the denominator when calculating percentages.

(1) Rate per 1,000 population.

* Rates based on fewer than 10 occurrences are statistically unreliable and should be used with caution.

** Data suppressed for confidentiality concerns if total births to residents, by race, is less than five observations.

TABLE 2 **SELECTED BIRTH STATISTICS REPORTED BY MOTHER'S RACE:**
2002 AND 2000-2002
PRINCE OF WALES-OUTER KETCHIKAN CENSUS AREA

	TOTAL				WHITE				NATIVE			
	2002 NUMBER	2002 RATE*	2000-2002 NUMBER	2000-2002 RATE*	2002 NUMBER	2002 RATE*	2000-2002 NUMBER	2000-2002 RATE*	2002 NUMBER	2002 RATE*	2000-2002 NUMBER	2000-2002 RATE*
BIRTH RATES (1)												
CRUDE BIRTH RATE	72	12.7	233	13.2								
TEEN BIRTH RATE												
15-17	4	23.0 *	12	22.9								
18-19	9	134.3 *	26	136.8								
15-19	13	53.9	38	53.1								
FERTILITY RATE	72	63.7	233	65.6								

	TOTAL				WHITE				NATIVE			
	2002 NUMBER	2002 %	2000-2002 NUMBER	2000-2002 %	2002 NUMBER	2002 %	2000-2002 NUMBER	2000-2002 %	2002 NUMBER	2002 %	2000-2002 NUMBER	2000-2002 %
BIRTHS												
WITHIN AREA	1	100.0	6	100.0	1	100.0	4	66.7	0	0.0	2	33.3
TO RESIDENTS	72	100.0	233	100.0	35	48.6	100	42.9	33	45.8	125	53.6
FACILITY												
HOSPITAL	61	84.7	210	90.1	27	77.1	83	83.0	30	90.9	120	96.0
BIRTHING CENTER	1	1.4	1	0.4	1	2.9	1	1.0	0	0.0	0	0.0
HOME	5	6.9	10	4.3	4	11.4	9	9.0	1	3.0	1	0.8
OTHER	0	0.0	2	0.9	0	0.0	0	0.0	0	0.0	2	1.6
OUTSIDE ALASKA	5	6.9	10	4.3	3	8.6	7	7.0	2	6.1	2	1.6
MOTHER CHARACTERISTICS												
AGE GROUP												
<15	0	0.0	0	0.0	0	0.0	0	0.0	0	0.0	0	0.0
15-19	13	18.1	38	16.3	7	20.0	13	13.0	5	15.2	24	19.2
20-24	25	34.7	82	35.2	14	40.0	30	30.0	10	30.3	50	40.0
25-29	17	23.6	52	22.3	5	14.3	25	25.0	12	36.4	26	20.8
30-34	10	13.9	35	15.0	5	14.3	18	18.0	4	12.1	15	12.0
35-39	4	5.6	18	7.7	1	2.9	9	9.0	2	6.1	8	6.4
40-44	3	4.2	8	3.4	3	8.6	5	5.0	0	0.0	2	1.6
45+	0	0.0	0	0.0	0	0.0	0	0.0	0	0.0	0	0.0
REPORTED DRINKING	0	0.0	7	3.1	0	0.0	1	1.0	0	0.0	6	4.9
REPORTED SMOKING	14	19.4	49	21.2	9	25.7	22	22.2	5	15.2	27	21.8
UNWED	37	51.4	117	50.2	13	37.1	35	35.0	23	69.7	80	64.0
EDUCATION												
<12 YEARS	10	14.1	33	14.7	5	14.7	15	15.6	5	15.2	18	14.9
12 YEARS	37	52.1	121	53.8	16	47.1	46	47.9	18	54.5	70	57.9
12+ YEARS	24	33.8	71	31.6	13	38.2	35	36.5	10	30.3	33	27.3
PRENATAL CARE												
TRIMESTER CARE BEGAN												
1ST TRIMESTER	53	76.8	163	75.1	27	81.8	68	73.9	24	75.0	90	76.9
3RD TRIMESTER	2	2.9	7	3.2	1	3.0	2	2.2	1	3.1	5	4.3
NO PRENATAL CARE	2	2.8	4	1.9	2	5.7	4	4.3	0	0.0	0	0.0
APNCU INDEX												
ADEQUATE+	10	14.1	42	19.6	4	11.4	12	12.9	6	18.8	30	26.5
ADEQUATE	33	46.5	89	41.6	18	51.4	45	48.4	14	43.8	40	35.4
INTERMEDIATE	11	15.5	46	21.5	6	17.1	17	18.3	4	12.5	27	23.9
INADEQUATE	17	23.9	37	17.3	7	20.0	19	20.4	8	25.0	16	14.2
KESSNER INDEX												
ADEQUATE	43	60.6	132	61.7	21	60.0	53	57.0	21	65.6	76	67.3
INTERMEDIATE	24	33.8	71	33.2	11	31.4	34	36.6	10	31.3	32	28.3
INADEQUATE	4	5.6	11	5.1	3	8.6	6	6.5	1	3.1	5	4.4
C-SECTION BIRTHS	19	26.4	43	18.5	10	28.6	22	22.0	8	24.2	18	14.4
PRE-TERM BIRTHS	8	11.1	28	12.0	2	5.7	7	7.0	6	18.2	20	16.0
LOW BIRTHWEIGHT	2	2.8	10	4.3	1	2.9	5	5.0	1	3.0	4	3.2

Note: Unknown responses are excluded from the denominator when calculating percentages.
 (1) Rate per 1,000 population.
 * Rates based on fewer than 10 occurrences are statistically unreliable and should be used with caution.
 ** Data suppressed for confidentiality concerns if total births to residents, by race, is less than five observations.

**TABLE 2 SELECTED BIRTH STATISTICS REPORTED BY MOTHER'S RACE:
2002 AND 2000-2002
SITKA BOROUGH**

	TOTAL				WHITE				NATIVE			
	2002 NUMBER	2002 RATE*	2000-2002 NUMBER	2000-2002 RATE*	2002 NUMBER	2002 RATE*	2000-2002 NUMBER	2000-2002 RATE*	2002 NUMBER	2002 RATE*	2000-2002 NUMBER	2000-2002 RATE*
BIRTH RATES (1)												
CRUDE BIRTH RATE	117	13.2	364	13.7								
TEEN BIRTH RATE												
15-17	2	9.0 *	5	7.6 *								
18-19	5	42.4 *	21	64.0								
15-19	7	20.5 *	26	26.3								
FERTILITY RATE	117	63.4	364	64.7								

	TOTAL				WHITE				NATIVE			
	2002 NUMBER	2002 %	2000-2002 NUMBER	2000-2002 %	2002 NUMBER	2002 %	2000-2002 NUMBER	2000-2002 %	2002 NUMBER	2002 %	2000-2002 NUMBER	2000-2002 %
BIRTHS												
WITHIN AREA	122	100.0	386	100.0	77	63.1	241	62.4	43	35.2	125	32.4
TO RESIDENTS	117	100.0	364	100.0	77	65.8	245	67.3	37	31.6	100	27.5
FACILITY												
HOSPITAL	112	95.7	349	95.9	72	93.5	231	94.3	37	100.0	100	100.0
BIRTHING CENTER	0	0.0	0	0.0	0	0.0	0	0.0	0	0.0	0	0.0
HOME	2	1.7	6	1.6	2	2.6	6	2.4	0	0.0	0	0.0
OTHER	0	0.0	0	0.0	0	0.0	0	0.0	0	0.0	0	0.0
OUTSIDE ALASKA	3	2.6	9	2.5	3	3.9	8	3.3	0	0.0	0	0.0
MOTHER CHARACTERISTICS												
AGE GROUP												
<15	0	0.0	0	0.0	0	0.0	0	0.0	0	0.0	0	0.0
15-19	7	6.0	26	7.1	1	1.3	12	4.9	6	16.2	13	13.0
20-24	31	26.5	85	23.4	17	22.1	45	18.4	13	35.1	32	32.0
25-29	39	33.3	115	31.6	27	35.1	79	32.2	10	27.0	31	31.0
30-34	19	16.2	77	21.2	16	20.8	63	25.7	3	8.1	13	13.0
35-39	17	14.5	52	14.3	14	18.2	41	16.7	3	8.1	8	8.0
40-44	4	3.4	9	2.5	2	2.6	5	2.0	2	5.4	3	3.0
45+	0	0.0	0	0.0	0	0.0	0	0.0	0	0.0	0	0.0
REPORTED DRINKING	2	1.7	9	2.5	0	0.0	4	1.7	2	5.4	5	5.0
REPORTED SMOKING	13	11.1	49	13.5	6	7.8	24	9.8	7	18.9	23	23.0
UNWED	46	39.3	132	36.4	22	28.6	66	27.0	24	64.9	63	63.0
EDUCATION												
<12 YEARS	13	11.6	35	9.8	4	5.3	15	6.2	9	26.5	18	18.8
12 YEARS	35	31.3	116	32.6	21	28.0	67	27.7	14	41.2	44	45.8
12+ YEARS	64	57.1	205	57.6	50	66.7	160	66.1	11	32.4	34	35.4
PRENATAL CARE												
TRIMESTER CARE BEGAN												
1ST TRIMESTER	84	73.0	280	78.9	61	80.3	197	82.8	20	55.6	67	68.4
3RD TRIMESTER	11	9.6	24	6.8	5	6.6	11	4.6	6	16.7	11	11.2
NO PRENATAL CARE	0	0.0	0	0.0	0	0.0	0	0.0	0	0.0	0	0.0
APNCU INDEX												
ADEQUATE+	32	28.1	107	30.2	21	27.6	65	27.3	11	30.6	39	39.8
ADEQUATE	33	28.9	120	33.9	26	34.2	89	37.4	6	16.7	25	25.5
INTERMEDIATE	18	15.8	53	15.0	13	17.1	41	17.2	4	11.1	6	6.1
INADEQUATE	31	27.2	74	20.9	16	21.1	43	18.1	15	41.7	28	28.6
KESSNER INDEX												
ADEQUATE	68	59.6	243	68.6	50	65.8	170	71.4	17	47.2	64	65.3
INTERMEDIATE	35	30.7	87	24.6	21	27.6	57	23.9	13	36.1	23	23.5
INADEQUATE	11	9.6	24	6.8	5	6.6	11	4.6	6	16.7	11	11.2
C-SECTION BIRTHS	30	25.9	83	23.0	20	26.0	59	24.2	9	25.0	18	18.4
PRE-TERM BIRTHS	14	12.0	33	9.1	8	10.4	23	9.4	5	13.5	7	7.0
LOW BIRTHWEIGHT	4	3.4	11	3.0	1	1.3	7	2.9	2	5.4	2	2.0

Note: Unknown responses are excluded from the denominator when calculating percentages.

(1) Rate per 1,000 population.

* Rates based on fewer than 10 occurrences are statistically unreliable and should be used with caution.

** Data suppressed for confidentiality concerns if total births to residents, by race, is less than five observations.

TABLE 2 **SELECTED BIRTH STATISTICS REPORTED BY MOTHER'S RACE:**
2002 AND 2000-2002
SKAGWAY-HOONAH-ANGOON CENSUS AREA

	TOTAL				WHITE				NATIVE			
	2002 NUMBER	2002 RATE*	2000-2002 NUMBER	2000-2002 RATE*	2002 NUMBER	2002 RATE*	2000-2002 NUMBER	2000-2002 RATE*	2002 NUMBER	2002 RATE*	2000-2002 NUMBER	2000-2002 RATE*
BIRTH RATES (1)												
CRUDE BIRTH RATE	28	8.7	82	8.2								
TEEN BIRTH RATE												
15-17	0	0.0	1	4.0 *								
18-19	1	27.8 *	6	56.6 *								
15-19	1	8.6 *	7	19.5 *								
FERTILITY RATE	28	45.3	82	42.4								

	TOTAL				WHITE				NATIVE			
	2002 NUMBER	2002 %	2000-2002 NUMBER	2000-2002 %	2002 NUMBER	2002 %	2000-2002 NUMBER	2000-2002 %	2002 NUMBER	2002 %	2000-2002 NUMBER	2000-2002 %
BIRTHS												
WITHIN AREA	0	0.0	2	100.0	0	0.0	0	0.0	0	0.0	2	100.0
TO RESIDENTS	28	100.0	82	100.0	15	53.6	33	40.2	10	35.7	39	47.6
FACILITY												
HOSPITAL	17	60.7	56	68.3	8	53.3	19	57.6	9	90.0	37	94.9
BIRTHING CENTER	7	25.0	12	14.6	6	40.0	11	33.3	1	10.0	1	2.6
HOME	0	0.0	0	0.0	0	0.0	0	0.0	0	0.0	0	0.0
OTHER	0	0.0	1	1.2	0	0.0	0	0.0	0	0.0	1	2.6
OUTSIDE ALASKA	4	14.3	13	15.9	1	6.7	3	9.1	0	0.0	0	0.0
MOTHER CHARACTERISTICS												
AGE GROUP												
<15	0	0.0	0	0.0	0	0.0	0	0.0	0	0.0	0	0.0
15-19	1	3.7	7	8.6	0	0.0	2	6.3	1	10.0	5	12.8
20-24	7	25.9	21	25.9	2	14.3	6	18.8	4	40.0	14	35.9
25-29	9	33.3	25	30.9	4	28.6	10	31.3	5	50.0	12	30.8
30-34	5	18.5	11	13.6	4	28.6	6	18.8	0	0.0	2	5.1
35-39	5	18.5	15	18.5	4	28.6	7	21.9	0	0.0	6	15.4
40-44	0	0.0	2	2.5	0	0.0	1	3.1	0	0.0	0	0.0
45+	0	0.0	0	0.0	0	0.0	0	0.0	0	0.0	0	0.0
REPORTED DRINKING	0	0.0	3	4.5	0	0.0	2	6.7	0	0.0	1	2.7
REPORTED SMOKING	1	4.3	8	11.4	0	0.0	3	9.4	1	11.1	5	13.2
UNWED	9	37.5	32	45.1	2	14.3	8	25.0	7	70.0	24	61.5
EDUCATION												
<12 YEARS	2	9.1	14	20.9	0	0.0	4	12.9	2	22.2	10	27.8
12 YEARS	9	40.9	27	40.3	4	30.8	8	25.8	5	55.6	19	52.8
12+ YEARS	11	50.0	26	38.8	9	69.2	19	61.3	2	22.2	7	19.4
PRENATAL CARE												
TRIMESTER CARE BEGAN												
1ST TRIMESTER	21	95.5	51	83.6	14	100.0	26	86.7	7	87.5	25	80.6
3RD TRIMESTER	1	4.5	2	3.3	0	0.0	0	0.0	1	12.5	2	6.5
NO PRENATAL CARE	0	0.0	1	1.9	0	0.0	0	0.0	0	0.0	1	3.7
APNCU INDEX												
ADEQUATE+	6	35.3	9	17.0	3	25.0	4	15.4	3	60.0	5	18.5
ADEQUATE	6	35.3	19	35.8	6	50.0	16	61.5	0	0.0	3	11.1
INTERMEDIATE	3	17.6	16	30.2	2	16.7	5	19.2	1	20.0	11	40.7
INADEQUATE	2	11.8	9	17.0	1	8.3	1	3.8	1	20.0	8	29.6
KESSNER INDEX												
ADEQUATE	15	88.2	30	56.6	11	91.7	19	73.1	4	80.0	11	40.7
INTERMEDIATE	1	5.9	20	37.7	1	8.3	7	26.9	0	0.0	13	48.1
INADEQUATE	1	5.9	3	5.7	0	0.0	0	0.0	1	20.0	3	11.1
C-SECTION BIRTHS	3	12.5	16	22.5	3	21.4	7	21.9	0	0.0	9	23.1
PRE-TERM BIRTHS	1	4.3	8	11.8	1	7.1	4	12.9	0	0.0	4	10.8
LOW BIRTHWEIGHT	1	4.2	3	4.2	1	7.1	2	6.3	0	0.0	1	2.6

Note: Unknown responses are excluded from the denominator when calculating percentages.
 (1) Rate per 1,000 population.
 * Rates based on fewer than 10 occurrences are statistically unreliable and should be used with caution.
 ** Data suppressed for confidentiality concerns if total births to residents, by race, is less than five observations.

**TABLE 2 SELECTED BIRTH STATISTICS REPORTED BY MOTHER'S RACE:
2002 AND 2000-2002
SOUTHEAST FAIRBANKS CENSUS AREA**

	TOTAL				WHITE				NATIVE			
	2002 NUMBER	2002 RATE*	2000-2002 NUMBER	2000-2002 RATE*	2002 NUMBER	2002 RATE*	2000-2002 NUMBER	2000-2002 RATE*	2002 NUMBER	2002 RATE*	2000-2002 NUMBER	2000-2002 RATE*
BIRTH RATES (1)												
CRUDE BIRTH RATE	85	14.3	273	15.1								
TEEN BIRTH RATE												
15-17	2	12.7 *	6	12.3 *								
18-19	4	46.5 *	15	60.7								
15-19	6	24.6 *	21	28.6								
FERTILITY RATE	85	79.3	273	79.3								

	TOTAL				WHITE				NATIVE			
	2002 NUMBER	2002 %	2000-2002 NUMBER	2000-2002 %	2002 NUMBER	2002 %	2000-2002 NUMBER	2000-2002 %	2002 NUMBER	2002 %	2000-2002 NUMBER	2000-2002 %
BIRTHS												
WITHIN AREA	6	100.0	24	100.0	6	100.0	23	95.8	0	0.0	1	4.2
TO RESIDENTS	85	100.0	273	100.0	67	78.8	218	79.9	15	17.6	43	15.8
FACILITY												
HOSPITAL	75	88.2	228	83.5	57	85.1	174	79.8	15	100.0	42	97.7
BIRTHING CENTER	3	3.5	16	5.9	3	4.5	15	6.9	0	0.0	1	2.3
HOME	5	5.9	17	6.2	5	7.5	17	7.8	0	0.0	0	0.0
OTHER	2	2.4	8	2.9	2	3.0	8	3.7	0	0.0	0	0.0
OUTSIDE ALASKA	0	0.0	4	1.5	0	0.0	4	1.8	0	0.0	0	0.0
MOTHER CHARACTERISTICS												
AGE GROUP												
<15	0	0.0	1	0.4	0	0.0	1	0.5	0	0.0	0	0.0
15-19	6	7.1	21	7.7	4	6.0	11	5.0	1	6.7	8	18.6
20-24	20	23.5	70	25.6	15	22.4	53	24.3	5	33.3	14	32.6
25-29	23	27.1	70	25.6	17	25.4	56	25.7	5	33.3	12	27.9
30-34	13	15.3	55	20.1	10	14.9	47	21.6	3	20.0	5	11.6
35-39	16	18.8	40	14.7	14	20.9	34	15.6	1	6.7	4	9.3
40-44	7	8.2	15	5.5	7	10.4	15	6.9	0	0.0	0	0.0
45+	0	0.0	1	0.4	0	0.0	1	0.5	0	0.0	0	0.0
REPORTED DRINKING	1	1.2	4	1.5	0	0.0	1	0.5	1	6.7	2	4.7
REPORTED SMOKING	15	17.6	49	18.0	8	11.9	30	13.8	7	46.7	18	41.9
UNWED	20	23.5	73	26.8	7	10.4	34	15.7	12	80.0	35	81.4
EDUCATION												
<12 YEARS	9	11.4	37	14.1	7	11.1	31	14.6	2	14.3	6	14.6
12 YEARS	40	50.6	133	50.8	32	50.8	104	48.8	8	57.1	28	68.3
12+ YEARS	30	38.0	92	35.1	24	38.1	78	36.6	4	28.6	7	17.1
PRENATAL CARE												
TRIMESTER CARE BEGAN												
1ST TRIMESTER	36	45.6	141	54.0	28	45.9	112	54.4	6	40.0	21	48.8
3RD TRIMESTER	15	19.0	35	13.4	13	21.3	28	13.6	2	13.3	7	16.3
NO PRENATAL CARE	1	1.3	2	0.8	1	1.6	2	1.0	0	0.0	0	0.0
APNCU INDEX												
ADEQUATE+	4	5.0	21	8.1	3	4.8	17	8.3	0	0.0	2	4.8
ADEQUATE	17	21.3	61	23.5	13	21.0	47	22.8	4	26.7	10	23.8
INTERMEDIATE	15	18.8	58	22.3	11	17.7	45	21.8	3	20.0	9	21.4
INADEQUATE	44	55.0	120	46.2	35	56.5	97	47.1	8	53.3	21	50.0
KESSNER INDEX												
ADEQUATE	19	23.8	78	30.0	15	24.2	60	29.1	3	20.0	13	31.0
INTERMEDIATE	45	56.3	145	55.8	33	53.2	116	56.3	10	66.7	22	52.4
INADEQUATE	16	20.0	37	14.2	14	22.6	30	14.6	2	13.3	7	16.7
C-SECTION BIRTHS	17	20.0	50	18.7	9	13.4	35	16.4	7	46.7	13	30.2
PRE-TERM BIRTHS	9	10.6	27	9.9	6	9.0	20	9.2	2	13.3	6	14.0
LOW BIRTHWEIGHT	5	5.9	14	5.1	3	4.5	12	5.5	2	13.3	2	4.7

Note: Unknown responses are excluded from the denominator when calculating percentages.

(1) Rate per 1,000 population.

* Rates based on fewer than 10 occurrences are statistically unreliable and should be used with caution.

** Data suppressed for confidentiality concerns if total births to residents, by race, is less than five observations.

TABLE 2 **SELECTED BIRTH STATISTICS REPORTED BY MOTHER'S RACE:**
2002 AND 2000-2002
VALDEZ-CORDOVA CENSUS AREA

	TOTAL				WHITE				NATIVE			
	2002 NUMBER	2002 RATE*	2000-2002 NUMBER	2000-2002 RATE*	2002 NUMBER	2002 RATE*	2000-2002 NUMBER	2000-2002 RATE*	2002 NUMBER	2002 RATE*	2000-2002 NUMBER	2000-2002 RATE*
BIRTH RATES (1)												
CRUDE BIRTH RATE	132	12.8	404	13.2								
TEEN BIRTH RATE												
15-17	2	7.0 *	7	8.7 *								
18-19	7	50.4 *	33	88.0								
15-19	9	21.3 *	40	33.8								
FERTILITY RATE	132	63.6	404	64.5								

	TOTAL				WHITE				NATIVE			
	2002 NUMBER	2002 %	2000-2002 NUMBER	2000-2002 %	2002 NUMBER	2002 %	2000-2002 NUMBER	2000-2002 %	2002 NUMBER	2002 %	2000-2002 NUMBER	2000-2002 %
BIRTHS												
WITHIN AREA	42	100.0	133	100.0	37	88.1	109	82.0	3	7.1	15	11.3
TO RESIDENTS	132	100.0	404	100.0	95	72.0	276	68.3	24	18.2	93	23.0
FACILITY												
HOSPITAL	120	90.9	361	89.4	85	89.5	239	86.6	23	95.8	92	98.9
BIRTHING CENTER	5	3.8	17	4.2	5	5.3	16	5.8	0	0.0	0	0.0
HOME	3	2.3	12	3.0	3	3.2	11	4.0	0	0.0	0	0.0
OTHER	1	0.8	1	0.2	0	0.0	0	0.0	1	4.2	1	1.1
OUTSIDE ALASKA	3	2.3	13	3.2	2	2.1	10	3.6	0	0.0	0	0.0
MOTHER CHARACTERISTICS												
AGE GROUP												
<15	1	0.8	1	0.2	1	1.1	1	0.4	0	0.0	0	0.0
15-19	9	6.8	40	9.9	5	5.3	17	6.2	3	12.5	21	22.6
20-24	36	27.3	100	24.8	27	28.4	68	24.6	7	29.2	25	26.9
25-29	35	26.5	107	26.5	23	24.2	77	27.9	6	25.0	20	21.5
30-34	26	19.7	93	23.0	18	18.9	64	23.2	5	20.8	17	18.3
35-39	19	14.4	47	11.6	16	16.8	35	12.7	3	12.5	9	9.7
40-44	6	4.5	15	3.7	5	5.3	13	4.7	0	0.0	1	1.1
45+	0	0.0	1	0.2	0	0.0	1	0.4	0	0.0	0	0.0
REPORTED DRINKING	5	3.9	15	3.8	2	2.2	9	3.3	3	12.5	6	6.5
REPORTED SMOKING	18	14.0	63	15.9	10	10.6	32	11.8	8	33.3	29	31.5
UNWED EDUCATION	39	30.0	121	30.3	24	25.3	63	22.9	12	50.0	50	53.8
<12 YEARS	14	11.5	40	10.4	7	8.0	18	6.8	6	26.1	20	22.2
12 YEARS	48	39.3	158	41.0	31	35.2	99	37.4	13	56.5	46	51.1
12+ YEARS	60	49.2	187	48.6	50	56.8	148	55.8	4	17.4	24	26.7
PRENATAL CARE												
TRIMESTER CARE BEGAN												
1ST TRIMESTER	99	78.0	308	80.2	77	81.1	226	84.0	13	61.9	58	68.2
3RD TRIMESTER	6	4.7	11	2.9	4	4.2	6	2.2	2	9.5	4	4.7
NO PRENATAL CARE	1	0.8	3	0.8	0	0.0	2	0.8	1	4.5	1	1.2
APNCU INDEX												
ADEQUATE+	23	18.4	77	20.6	17	18.5	50	19.1	4	18.2	21	24.7
ADEQUATE	50	40.0	146	39.1	37	40.2	106	40.5	7	31.8	28	32.9
INTERMEDIATE	30	24.0	90	24.1	23	25.0	67	25.6	5	22.7	18	21.2
INADEQUATE	22	17.6	60	16.1	15	16.3	39	14.9	6	27.3	18	21.2
KESSNER INDEX												
ADEQUATE	79	63.2	233	62.1	61	66.3	171	65.0	10	45.5	45	52.9
INTERMEDIATE	39	31.2	128	34.1	27	29.3	84	31.9	9	40.9	35	41.2
INADEQUATE	7	5.6	14	3.7	4	4.3	8	3.0	3	13.6	5	5.9
C-SECTION BIRTHS	26	19.8	68	17.0	18	18.9	55	19.9	3	12.5	7	7.6
PRE-TERM BIRTHS	8	6.1	34	8.5	5	5.3	22	8.0	3	12.5	9	9.8
LOW BIRTHWEIGHT	7	5.3	27	6.8	6	6.3	23	8.4	1	4.2	2	2.2

Note: Unknown responses are excluded from the denominator when calculating percentages.

(1) Rate per 1,000 population.

* Rates based on fewer than 10 occurrences are statistically unreliable and should be used with caution.

** Data suppressed for confidentiality concerns if total births to residents, by race, is less than five observations.

**TABLE 2 SELECTED BIRTH STATISTICS REPORTED BY MOTHER'S RACE:
2002 AND 2000-2002
WADE HAMPTON CENSUS AREA**

	TOTAL				WHITE				NATIVE			
	2002 NUMBER	2002 RATE*	2000-2002 NUMBER	2000-2002 RATE*	2002 NUMBER	2002 RATE*	2000-2002 NUMBER	2000-2002 RATE*	2002 NUMBER	2002 RATE*	2000-2002 NUMBER	2000-2002 RATE*
BIRTH RATES (1)												
CRUDE BIRTH RATE	218	29.9	651	30.2								
TEEN BIRTH RATE												
15-17	21	80.5	54	69.5								
18-19	27	214.3	80	251.6								
15-19	48	124.0	134	122.4								
FERTILITY RATE	218	155.6	651	153.9								

	TOTAL				WHITE				NATIVE			
	2002 NUMBER	2002 %	2000-2002 NUMBER	2000-2002 %	2002 NUMBER	2002 %	2000-2002 NUMBER	2000-2002 %	2002 NUMBER	2002 %	2000-2002 NUMBER	2000-2002 %
BIRTHS												
WITHIN AREA	3	100.0	16	100.0	0	0.0	0	0.0	3	100.0	16	100.0
TO RESIDENTS	218	100.0	651	100.0	3	1.4	9	1.4	213	97.7	638	98.0
FACILITY												
HOSPITAL	217	99.5	642	98.6	2	66.7	7	77.8	213	100.0	631	98.9
BIRTHING CENTER	0	0.0	0	0.0	0	0.0	0	0.0	0	0.0	0	0.0
HOME	0	0.0	1	0.2	0	0.0	0	0.0	0	0.0	1	0.2
OTHER	0	0.0	5	0.8	0	0.0	0	0.0	0	0.0	5	0.8
OUTSIDE ALASKA	1	0.5	3	0.5	1	33.3	2	22.2	0	0.0	1	0.2
MOTHER CHARACTERISTICS												
AGE GROUP												
<15	0	0.0	0	0.0	**	**	0	0.0	**	**	0	0.0
15-19	48	22.0	134	20.6	**	**	0	0.0	**	**	134	21.0
20-24	53	24.3	158	24.3	**	**	0	0.0	**	**	158	24.8
25-29	55	25.2	171	26.3	**	**	4	44.4	**	**	165	25.9
30-34	40	18.3	105	16.1	**	**	4	44.4	**	**	100	15.7
35-39	16	7.3	64	9.8	**	**	1	11.1	**	**	63	9.9
40-44	6	2.8	18	2.8	**	**	0	0.0	**	**	17	2.7
45+	0	0.0	1	0.2	**	**	0	0.0	**	**	1	0.2
REPORTED DRINKING	19	8.8	47	7.3	**	**	0	0.0	**	**	47	7.5
REPORTED SMOKING	57	26.4	177	27.4	**	**	0	0.0	**	**	176	27.8
UNWED	140	64.5	405	62.5	**	**	0	0.0	**	**	404	63.5
EDUCATION												
<12 YEARS	68	31.9	192	30.6	**	**	0	0.0	**	**	192	31.1
12 YEARS	121	56.8	376	59.9	**	**	2	22.2	**	**	373	60.5
12+ YEARS	24	11.3	60	9.6	**	**	7	77.8	**	**	52	8.4
PRENATAL CARE												
TRIMESTER CARE BEGAN												
1ST TRIMESTER	123	58.0	338	53.3	**	**	6	66.7	**	**	329	53.0
3RD TRIMESTER	20	9.4	84	13.2	**	**	0	0.0	**	**	84	13.5
NO PRENATAL CARE	3	1.4	6	0.9	**	**	0	0.0	**	**	6	1.0
APNCU INDEX												
ADEQUATE+	13	6.1	30	4.8	**	**	1	11.1	**	**	29	4.7
ADEQUATE	22	10.3	79	12.5	**	**	3	33.3	**	**	76	12.3
INTERMEDIATE	65	30.5	188	29.8	**	**	1	11.1	**	**	186	30.0
INADEQUATE	113	53.1	334	52.9	**	**	4	44.4	**	**	328	53.0
KESSNER INDEX												
ADEQUATE	28	13.1	94	14.8	**	**	2	22.2	**	**	92	14.8
INTERMEDIATE	162	76.1	449	70.9	**	**	7	77.8	**	**	439	70.7
INADEQUATE	23	10.8	90	14.2	**	**	0	0.0	**	**	90	14.5
C-SECTION BIRTHS	13	6.0	41	6.3	**	**	2	25.0	**	**	38	6.0
PRE-TERM BIRTHS	30	13.8	89	13.7	**	**	2	22.2	**	**	87	13.6
LOW BIRTHWEIGHT	16	7.4	44	6.8	**	**	0	0.0	**	**	44	6.9

Note: Unknown responses are excluded from the denominator when calculating percentages.

(1) Rate per 1,000 population.

* Rates based on fewer than 10 occurrences are statistically unreliable and should be used with caution.

** Data suppressed for confidentiality concerns if total births to residents, by race, is less than five observations.

TABLE 2 **SELECTED BIRTH STATISTICS REPORTED BY MOTHER'S RACE:**
2002 AND 2000-2002
WRANGELL-PETERSBURG CENSUS AREA

	TOTAL				WHITE				NATIVE			
	2002 NUMBER	2002 RATE*	2000-2002 NUMBER	2000-2002 RATE*	2002 NUMBER	2002 RATE*	2000-2002 NUMBER	2000-2002 RATE*	2002 NUMBER	2002 RATE*	2000-2002 NUMBER	2000-2002 RATE*
BIRTH RATES (1)												
CRUDE BIRTH RATE	64	9.9	224	11.3								
TEEN BIRTH RATE												
15-17	0	0.0	4	7.3 *								
18-19	4	53.3 *	13	64.4								
15-19	4	14.9 *	17	22.6								
FERTILITY RATE	64	52.8	224	59.2								

	TOTAL				WHITE				NATIVE			
	2002 NUMBER	2002 %	2000-2002 NUMBER	2000-2002 %	2002 NUMBER	2002 %	2000-2002 NUMBER	2000-2002 %	2002 NUMBER	2002 %	2000-2002 NUMBER	2000-2002 %
BIRTHS												
WITHIN AREA	28	100.0	104	100.0	19	67.9	73	70.2	8	28.6	27	26.0
TO RESIDENTS	64	100.0	224	100.0	42	65.6	150	67.0	17	26.6	62	27.7
FACILITY												
HOSPITAL	58	90.6	211	94.2	37	88.1	138	92.0	16	94.1	61	98.4
BIRTHING CENTER	0	0.0	0	0.0	0	0.0	0	0.0	0	0.0	0	0.0
HOME	0	0.0	0	0.0	0	0.0	0	0.0	0	0.0	0	0.0
OTHER	0	0.0	0	0.0	0	0.0	0	0.0	0	0.0	0	0.0
OUTSIDE ALASKA	6	9.4	13	5.8	5	11.9	12	8.0	1	5.9	1	1.6
MOTHER CHARACTERISTICS												
AGE GROUP												
<15	0	0.0	0	0.0	0	0.0	0	0.0	0	0.0	0	0.0
15-19	4	6.3	17	7.6	3	7.1	9	6.0	1	5.9	8	12.9
20-24	10	15.6	48	21.4	6	14.3	31	20.7	3	17.6	13	21.0
25-29	27	42.2	81	36.2	20	47.6	57	38.0	6	35.3	21	33.9
30-34	14	21.9	48	21.4	9	21.4	35	23.3	3	17.6	10	16.1
35-39	7	10.9	21	9.4	3	7.1	11	7.3	4	23.5	9	14.5
40-44	2	3.1	8	3.6	1	2.4	6	4.0	0	0.0	1	1.6
45+	0	0.0	1	0.4	0	0.0	1	0.7	0	0.0	0	0.0
REPORTED DRINKING	1	1.8	7	3.3	1	2.7	5	3.5	0	0.0	2	3.4
REPORTED SMOKING	9	14.5	36	16.3	7	17.1	19	12.8	2	12.5	15	25.0
UNWED	17	26.6	61	27.2	9	21.4	31	20.7	7	41.2	27	43.5
EDUCATION												
<12 YEARS	7	11.1	24	11.0	5	11.9	12	8.2	1	5.9	10	16.1
12 YEARS	30	47.6	91	41.6	21	50.0	56	38.1	8	47.1	33	53.2
12+ YEARS	26	41.3	104	47.5	16	38.1	79	53.7	8	47.1	19	30.6
PRENATAL CARE												
TRIMESTER CARE BEGAN												
1ST TRIMESTER	55	87.3	177	81.6	36	87.8	125	85.0	16	94.1	45	77.6
3RD TRIMESTER	3	4.8	6	2.8	2	4.9	4	2.7	1	5.9	2	3.4
NO PRENATAL CARE	0	0.0	0	0.0	0	0.0	0	0.0	0	0.0	0	0.0
APNCU INDEX												
ADEQUATE+	16	26.2	53	24.9	13	31.7	39	26.7	2	13.3	12	21.8
ADEQUATE	27	44.3	98	46.0	17	41.5	73	50.0	9	60.0	21	38.2
INTERMEDIATE	8	13.1	31	14.6	7	17.1	19	13.0	1	6.7	11	20.0
INADEQUATE	10	16.4	31	14.6	4	9.8	15	10.3	3	20.0	11	20.0
KESSNER INDEX												
ADEQUATE	46	75.4	153	71.8	33	80.5	110	75.3	11	73.3	37	67.3
INTERMEDIATE	12	19.7	54	25.4	6	14.6	32	21.9	3	20.0	16	29.1
INADEQUATE	3	4.9	6	2.8	2	4.9	4	2.7	1	6.7	2	3.6
C-SECTION BIRTHS	13	21.0	44	19.8	4	9.8	23	15.4	6	37.5	15	24.6
PRE-TERM BIRTHS	7	10.9	21	9.5	5	11.9	10	6.8	2	11.8	11	18.0
LOW BIRTHWEIGHT	5	7.8	8	3.6	4	9.5	6	4.0	1	5.9	2	3.2

Note: Unknown responses are excluded from the denominator when calculating percentages.

(1) Rate per 1,000 population.

* Rates based on fewer than 10 occurrences are statistically unreliable and should be used with caution.

** Data suppressed for confidentiality concerns if total births to residents, by race, is less than five observations.

**TABLE 2 SELECTED BIRTH STATISTICS REPORTED BY MOTHER'S RACE:
2002 AND 2000-2002
YAKUTAT BOROUGH**

	TOTAL				WHITE				NATIVE			
	2002 NUMBER	2002 RATE*	2000-2002 NUMBER	2000-2002 RATE*	2002 NUMBER	2002 RATE*	2000-2002 NUMBER	2000-2002 RATE*	2002 NUMBER	2002 RATE*	2000-2002 NUMBER	2000-2002 RATE*
BIRTH RATES (1)												
CRUDE BIRTH RATE	8	11.0 *	24	10.7								
TEEN BIRTH RATE												
15-17	0	0.0	0	0.0								
18-19	0	0.0	1	66.7 *								
15-19	0	0.0	1	13.0 *								
FERTILITY RATE	8	58.0 *	24	58.0								

	TOTAL				WHITE				NATIVE			
	2002 NUMBER	2002 %	2000-2002 NUMBER	2000-2002 %	2002 NUMBER	2002 %	2000-2002 NUMBER	2000-2002 %	2002 NUMBER	2002 %	2000-2002 NUMBER	2000-2002 %
BIRTHS												
WITHIN AREA	0	0.0	0	0.0	0	0.0	0	0.0	0	0.0	0	0.0
TO RESIDENTS	8	100.0	24	100.0	6	75.0	9	37.5	1	12.5	11	45.8
FACILITY												
HOSPITAL	5	62.5	21	87.5	4	66.7	7	77.8	1	100.0	11	100.0
BIRTHING CENTER	1	12.5	1	4.2	1	16.7	1	11.1	0	0.0	0	0.0
HOME	0	0.0	0	0.0	0	0.0	0	0.0	0	0.0	0	0.0
OTHER	0	0.0	0	0.0	0	0.0	0	0.0	0	0.0	0	0.0
OUTSIDE ALASKA	2	25.0	2	8.3	1	16.7	1	11.1	0	0.0	0	0.0
MOTHER CHARACTERISTICS												
AGE GROUP												
<15	0	0.0	0	0.0	**	**	0	0.0	**	**	0	0.0
15-19	0	0.0	1	4.2	**	**	0	0.0	**	**	1	9.1
20-24	3	37.5	10	41.7	**	**	3	33.3	**	**	6	54.5
25-29	4	50.0	6	25.0	**	**	3	33.3	**	**	2	18.2
30-34	1	12.5	5	20.8	**	**	2	22.2	**	**	1	9.1
35-39	0	0.0	1	4.2	**	**	0	0.0	**	**	1	9.1
40-44	0	0.0	1	4.2	**	**	1	11.1	**	**	0	0.0
45+	0	0.0	0	0.0	**	**	0	0.0	**	**	0	0.0
REPORTED DRINKING	0	0.0	0	0.0	**	**	0	0.0	**	**	0	0.0
REPORTED SMOKING	2	28.6	8	34.8	**	**	2	22.2	**	**	5	45.5
UNWED	1	14.3	12	52.2	**	**	2	22.2	**	**	10	90.9
EDUCATION												
<12 YEARS	0	0.0	1	4.8	**	**	0	0.0	**	**	1	9.1
12 YEARS	4	66.7	9	42.9	**	**	4	57.1	**	**	4	36.4
12+ YEARS	2	33.3	11	52.4	**	**	3	42.9	**	**	6	54.5
PRENATAL CARE												
TRIMESTER CARE BEGAN												
1ST TRIMESTER	4	57.1	14	63.6	**	**	6	66.7	**	**	6	60.0
3RD TRIMESTER	0	0.0	0	0.0	**	**	0	0.0	**	**	0	0.0
NO PRENATAL CARE	0	0.0	0	0.0	**	**	0	0.0	**	**	0	0.0
APNCU INDEX												
ADEQUATE+	1	14.3	5	22.7	**	**	1	11.1	**	**	3	30.0
ADEQUATE	2	28.6	6	27.3	**	**	4	44.4	**	**	2	20.0
INTERMEDIATE	0	0.0	3	13.6	**	**	0	0.0	**	**	2	20.0
INADEQUATE	4	57.1	8	36.4	**	**	4	44.4	**	**	3	30.0
KESSNER INDEX												
ADEQUATE	3	42.9	10	45.5	**	**	5	55.6	**	**	4	40.0
INTERMEDIATE	4	57.1	12	54.5	**	**	4	44.4	**	**	6	60.0
INADEQUATE	0	0.0	0	0.0	**	**	0	0.0	**	**	0	0.0
C-SECTION BIRTHS	1	14.3	6	26.1	**	**	3	33.3	**	**	3	27.3
PRE-TERM BIRTHS	0	0.0	1	4.3	**	**	0	0.0	**	**	0	0.0
LOW BIRTHWEIGHT	0	0.0	0	0.0	**	**	0	0.0	**	**	0	0.0

Note: Unknown responses are excluded from the denominator when calculating percentages.

(1) Rate per 1,000 population.

* Rates based on fewer than 10 occurrences are statistically unreliable and should be used with caution.

** Data suppressed for confidentiality concerns if total births to residents, by race, is less than five observations.

TABLE 2 **SELECTED BIRTH STATISTICS REPORTED BY MOTHER'S RACE:**
2002 AND 2000-2002
YUKON-KOYUKUK CENSUS AREA

	TOTAL				WHITE				NATIVE			
	2002 NUMBER	2002 RATE*	2000-2002 NUMBER	2000-2002 RATE*	2002 NUMBER	2002 RATE*	2000-2002 NUMBER	2000-2002 RATE*	2002 NUMBER	2002 RATE*	2000-2002 NUMBER	2000-2002 RATE*
BIRTH RATES (1)												
CRUDE BIRTH RATE	116	18.2	302	15.5								
TEEN BIRTH RATE												
15-17	11	53.7	28	45.1								
18-19	13	138.3	32	122.1								
15-19	24	80.3	60	68.0								
FERTILITY RATE	116	94.8	302	80.6								

	TOTAL				WHITE				NATIVE			
	2002 NUMBER	2002 %	2000-2002 NUMBER	2000-2002 %	2002 NUMBER	2002 %	2000-2002 NUMBER	2000-2002 %	2002 NUMBER	2002 %	2000-2002 NUMBER	2000-2002 %
BIRTHS												
WITHIN AREA	2	100.0	7	100.0	0	0.0	2	28.6	2	100.0	5	71.4
TO RESIDENTS	116	100.0	302	100.0	25	21.6	63	20.9	87	75.0	228	75.5
FACILITY												
HOSPITAL	107	92.2	280	92.7	16	64.0	45	71.4	87	100.0	226	99.1
BIRTHING CENTER	7	6.0	14	4.6	7	28.0	14	22.2	0	0.0	0	0.0
HOME	0	0.0	1	0.3	0	0.0	0	0.0	0	0.0	1	0.4
OTHER	0	0.0	1	0.3	0	0.0	0	0.0	0	0.0	1	0.4
OUTSIDE ALASKA	2	1.7	6	2.0	2	8.0	4	6.3	0	0.0	0	0.0
MOTHER CHARACTERISTICS												
AGE GROUP												
<15	0	0.0	0	0.0	0	0.0	0	0.0	0	0.0	0	0.0
15-19	24	20.7	60	19.9	2	8.0	3	4.8	21	24.1	55	24.1
20-24	26	22.4	73	24.2	3	12.0	8	12.7	22	25.3	64	28.1
25-29	23	19.8	65	21.5	9	36.0	16	25.4	13	14.9	46	20.2
30-34	28	24.1	67	22.2	8	32.0	24	38.1	20	23.0	40	17.5
35-39	11	9.5	29	9.6	1	4.0	8	12.7	9	10.3	19	8.3
40-44	4	3.4	8	2.6	2	8.0	4	6.3	2	2.3	4	1.8
45+	0	0.0	0	0.0	0	0.0	0	0.0	0	0.0	0	0.0
REPORTED DRINKING	3	2.6	14	4.7	1	4.0	1	1.6	2	2.3	13	5.7
REPORTED SMOKING	40	34.5	87	29.2	5	20.0	7	11.3	33	37.9	78	34.4
UNWED	67	57.8	174	58.2	6	24.0	11	17.7	57	65.5	157	68.9
EDUCATION												
<12 YEARS	27	26.2	66	23.7	3	12.0	4	6.3	24	31.2	62	29.2
12 YEARS	41	39.8	145	52.0	3	12.0	19	30.2	37	48.1	122	57.5
12+ YEARS	35	34.0	68	24.4	19	76.0	40	63.5	16	20.8	28	13.2
PRENATAL CARE												
TRIMESTER CARE BEGAN												
1ST TRIMESTER	68	61.3	159	55.8	18	72.0	39	63.9	49	59.8	115	53.5
3RD TRIMESTER	9	8.1	26	9.1	0	0.0	3	4.9	9	11.0	23	10.7
NO PRENATAL CARE	1	0.9	2	0.7	0	0.0	1	1.6	1	1.2	1	0.5
APNCU INDEX												
ADEQUATE+	10	9.1	23	8.1	2	8.3	4	6.6	8	9.8	18	8.4
ADEQUATE	26	23.6	68	23.9	6	25.0	20	32.8	18	22.0	46	21.4
INTERMEDIATE	40	36.4	85	29.8	12	50.0	22	36.1	28	34.1	62	28.8
INADEQUATE	34	30.9	109	38.2	4	16.7	15	24.6	28	34.1	89	41.4
KESSNER INDEX												
ADEQUATE	38	34.5	97	34.0	10	41.7	26	42.6	27	32.9	68	31.6
INTERMEDIATE	62	56.4	160	56.1	14	58.3	31	50.8	45	54.9	123	57.2
INADEQUATE	10	9.1	28	9.8	0	0.0	4	6.6	10	12.2	24	11.2
C-SECTION BIRTHS	22	19.0	52	17.4	6	24.0	13	21.0	14	16.1	35	15.4
PRE-TERM BIRTHS	13	11.2	26	8.7	0	0.0	3	4.8	13	14.9	22	9.7
LOW BIRTHWEIGHT	7	6.1	13	4.3	0	0.0	0	0.0	6	7.0	12	5.3

Note: Unknown responses are excluded from the denominator when calculating percentages.
 (1) Rate per 1,000 population.
 * Rates based on fewer than 10 occurrences are statistically unreliable and should be used with caution.
 ** Data suppressed for confidentiality concerns if total births to residents, by race, is less than five observations.

TABLE 3 SELECTED BIRTH STATISTICS REPORTED BY MOTHER'S RACE AND NATIVE REGIONAL CORPORATION OF RESIDENCE: 2002 AND 2000-2002 AHTNA INCORPORATED

	TOTAL				WHITE				NATIVE			
	2002 NUMBER	2002 %	2000-2002 NUMBER	2000-2002 %	2002 NUMBER	2002 %	2000-2002 NUMBER	2000-2002 %	2002 NUMBER	2002 %	2000-2002 NUMBER	2000-2002 %
BIRTHS												
WITHIN AREA	4	100.0	9	100.0	3	75.0	8	88.9	1	25.0	1	11.1
TO RESIDENTS	51	100.0	141	100.0	32	62.7	80	56.7	14	27.5	50	35.5
FACILITY												
HOSPITAL	41	80.4	113	80.1	24	75.0	56	70.0	13	92.9	49	98.0
BIRTHING CENTER	4	7.8	14	9.9	4	12.5	14	17.5	0	0.0	0	0.0
HOME	3	5.9	8	5.7	3	9.4	8	10.0	0	0.0	0	0.0
CLINIC	1	2.0	1	0.7	0	0.0	0	0.0	1	7.1	1	2.0
OUTSIDE ALASKA	2	3.9	5	3.5	1	3.1	2	2.5	0	0.0	0	0.0
MOTHER CHARACTERISTICS												
AGE GROUP												
<15	1	2.0	1	0.7	1	3.1	1	1.3	0	0.0	0	0.0
15-19	6	11.7	23	16.4	3	9.4	8	10.0	2	14.2	14	28.0
15-17	2	3.9	6	4.3	1	3.1	2	2.5	1	7.1	4	8.0
18-19	4	7.8	17	12.1	2	6.3	6	7.5	1	7.1	10	20.0
20-24	17	33.3	35	24.8	9	28.1	17	21.3	7	50.0	15	30.0
25-29	9	17.6	32	22.7	6	18.8	21	26.3	2	14.3	9	18.0
30-34	9	17.6	25	17.7	6	18.8	14	17.5	1	7.1	6	12.0
35-39	6	11.8	16	11.3	4	12.5	11	13.8	2	14.3	5	10.0
40-44	3	5.9	9	6.4	3	9.4	8	10.0	0	0.0	1	2.0
45+	0	0.0	0	0.0	0	0.0	0	0.0	0	0.0	0	0.0
REPORTED DRINKING	1	2.0	4	2.9	0	0.0	2	2.5	1	7.1	2	4.0
REPORTED SMOKING	4	8.2	20	14.6	2	6.3	8	10.0	2	14.3	12	24.0
UNWED	19	38.8	53	38.7	9	28.1	22	27.5	10	71.4	31	62.0
EDUCATION												
<12 YEARS	8	17.4	22	16.5	3	10.0	7	9.0	5	38.5	15	31.3
12 YEARS	19	41.3	63	47.4	12	40.0	34	43.6	5	38.5	24	50.0
12+ YEARS	19	41.3	48	36.1	15	50.0	37	47.4	3	23.1	9	18.8
PRENATAL CARE												
TRIMESTER CARE BEGAN												
1ST TRIMESTER	40	83.3	104	78.8	29	90.6	67	85.9	9	69.2	32	68.1
3RD TRIMESTER	1	2.1	1	0.8	1	3.1	1	1.3	0	0.0	0	0.0
NO PRENATAL CARE	1	2.1	2	1.5	0	0.0	1	1.3	1	7.1	1	2.1
APNCU INDEX												
ADEQUATE+	9	19.1	26	20.0	7	23.3	14	18.4	2	14.3	11	22.9
ADEQUATE	19	40.4	55	42.3	12	40.0	29	38.2	5	35.7	22	45.8
INTERMEDIATE	10	21.3	26	20.0	7	23.3	19	25.0	3	21.4	7	14.6
INADEQUATE	9	19.1	23	17.7	4	13.3	14	18.4	4	28.6	8	16.7
KESSNER INDEX												
ADEQUATE	30	63.8	80	61.5	22	73.3	48	63.2	6	42.9	27	56.3
INTERMEDIATE	15	31.9	47	36.2	7	23.3	26	34.2	7	50.0	20	41.7
INADEQUATE	2	4.3	3	2.3	1	3.3	2	2.6	0	0.0	0	0.0
C-SECTION BIRTHS	7	13.7	20	14.2	5	15.6	17	21.3	0	0.0	1	2.0
PRE-TERM BIRTHS	4	7.8	14	9.9	2	6.3	9	11.3	2	14.3	5	10.0
LOW BIRTHWEIGHT	3	5.9	7	5.0	2	6.3	6	7.5	1	7.1	1	2.0

Note: Unknown responses are excluded from the denominator when calculating percentages.

TABLE 3 SELECTED BIRTH STATISTICS REPORTED BY MOTHER'S RACE AND NATIVE REGIONAL CORPORATION OF RESIDENCE: 2002 AND 2000-2002 ALEUT CORPORATION

	TOTAL				WHITE				NATIVE			
	2002 NUMBER	2002 %	2000-2002 NUMBER	2000-2002 %	2002 NUMBER	2002 %	2000-2002 NUMBER	2000-2002 %	2002 NUMBER	2002 %	2000-2002 NUMBER	2000-2002 %
BIRTHS												
WITHIN AREA	0	0.0	4	100.0	0	0.0	3	75.0	0	0.0	1	25.0
TO RESIDENTS	57	100.0	181	100.0	23	40.4	69	38.1	22	38.6	85	47.0
FACILITY												
HOSPITAL	43	75.4	136	75.1	12	52.2	35	50.7	22	100.0	84	98.8
BIRTHING CENTER	1	1.8	3	1.7	1	4.3	3	4.3	0	0.0	0	0.0
HOME	0	0.0	0	0.0	0	0.0	0	0.0	0	0.0	0	0.0
CLINIC	0	0.0	2	1.1	0	0.0	1	1.4	0	0.0	1	1.2
OUTSIDE ALASKA	13	22.8	40	22.1	10	43.5	30	43.5	0	0.0	0	0.0
MOTHER CHARACTERISTICS												
AGE GROUP												
<15	0	0.0	0	0.0	0	0.0	0	0.0	0	0.0	0	0.0
15-19	4	7.0	12	6.7	1	4.3	4	5.9	3	13.6	8	9.4
15-17	0	0.0	1	0.6	0	0.0	0	0.0	0	0.0	1	1.2
18-19	4	7.0	11	6.1	1	4.3	4	5.9	3	13.6	7	8.2
20-24	11	19.3	43	23.9	3	13.0	11	16.2	6	27.3	28	32.9
25-29	14	24.6	43	23.9	5	21.7	20	29.4	4	18.2	16	18.8
30-34	16	28.1	39	21.7	8	34.8	14	20.6	4	18.2	13	15.3
35-39	11	19.3	38	21.1	5	21.7	16	23.5	5	22.7	20	23.5
40-44	1	1.8	5	2.8	1	4.3	3	4.4	0	0.0	0	0.0
45+	0	0.0	0	0.0	0	0.0	0	0.0	0	0.0	0	0.0
REPORTED DRINKING	3	6.1	5	3.1	2	11.8	2	3.6	1	4.5	3	3.5
REPORTED SMOKING	10	18.2	44	25.4	2	9.1	5	7.7	7	31.8	38	44.7
UNWED	16	29.6	62	36.0	3	14.3	14	21.9	9	40.9	38	44.7
EDUCATION												
<12 YEARS	5	9.1	18	10.3	1	4.5	3	4.4	2	9.1	12	14.5
12 YEARS	29	52.7	94	53.7	8	36.4	32	47.1	17	77.3	54	65.1
12+ YEARS	21	38.2	63	36.0	13	59.1	33	48.5	3	13.6	17	20.5
PRENATAL CARE												
TRIMESTER CARE BEGAN												
1ST TRIMESTER	44	84.6	140	82.4	15	78.9	51	78.5	21	95.5	72	87.8
3RD TRIMESTER	0	0.0	9	5.3	0	0.0	5	7.7	0	0.0	3	3.7
NO PRENATAL CARE	0	0.0	2	1.2	0	0.0	0	0.0	0	0.0	2	2.4
APNCU INDEX												
ADEQUATE+	16	32.0	70	41.7	2	11.1	16	25.4	13	59.1	49	59.0
ADEQUATE	19	38.0	54	32.1	9	50.0	24	38.1	7	31.8	21	25.3
INTERMEDIATE	10	20.0	20	11.9	3	16.7	9	14.3	1	4.5	4	4.8
INADEQUATE	5	10.0	24	14.3	4	22.2	14	22.2	1	4.5	9	10.8
KESSNER INDEX												
ADEQUATE	36	72.0	124	73.8	12	66.7	44	69.8	21	95.5	69	83.1
INTERMEDIATE	14	28.0	33	19.6	6	33.3	14	22.2	1	4.5	9	10.8
INADEQUATE	0	0.0	11	6.5	0	0.0	5	7.9	0	0.0	5	6.0
C-SECTION BIRTHS	15	26.3	41	22.7	9	39.1	21	30.4	4	18.2	14	16.5
PRE-TERM BIRTHS	3	5.3	14	7.7	1	4.3	5	7.2	1	4.5	7	8.2
LOW BIRTHWEIGHT	2	3.5	5	2.8	1	4.3	1	1.4	0	0.0	2	2.4

Note: Unknown responses are excluded from the denominator when calculating percentages.

TABLE 3 SELECTED BIRTH STATISTICS REPORTED BY MOTHER'S RACE AND NATIVE REGIONAL CORPORATION OF RESIDENCE: 2002 AND 2000-2002 ARCTIC SLOPE REGIONAL CORPORATION

	TOTAL				WHITE				NATIVE			
	2002 NUMBER	2002 %	2000-2002 NUMBER	2000-2002 %	2002 NUMBER	2002 %	2000-2002 NUMBER	2000-2002 %	2002 NUMBER	2002 %	2000-2002 NUMBER	2000-2002 %
BIRTHS												
WITHIN AREA	25	100.0	99	100.0	0	0.0	2	2.0	23	92.0	87	87.9
TO RESIDENTS	168	100.0	486	100.0	10	6.0	39	8.0	149	88.7	410	84.4
FACILITY												
HOSPITAL	164	97.6	474	97.5	8	80.0	33	84.6	148	99.3	407	99.3
BIRTHING CENTER	0	0.0	0	0.0	0	0.0	0	0.0	0	0.0	0	0.0
HOME	0	0.0	0	0.0	0	0.0	0	0.0	0	0.0	0	0.0
CLINIC	0	0.0	3	0.6	0	0.0	0	0.0	0	0.0	2	0.5
OUTSIDE ALASKA	4	2.4	9	1.9	2	20.0	6	15.4	1	0.7	1	0.2
MOTHER CHARACTERISTICS												
AGE GROUP												
<15	0	0.0	1	0.2	0	0.0	0	0.0	0	0.0	1	0.2
15-19	34	20.4	92	19.0	2	22.2	2	5.3	32	21.5	85	20.7
15-17	11	6.6	33	6.8	0	0.0	0	0.0	11	7.4	32	7.8
18-19	23	13.8	59	12.2	2	22.2	2	5.3	21	14.1	53	12.9
20-24	53	31.7	153	31.5	3	33.3	11	28.9	48	32.2	138	33.7
25-29	32	19.2	101	20.8	2	22.2	12	31.6	29	19.5	77	18.8
30-34	27	16.2	77	15.9	2	22.2	8	21.1	22	14.8	60	14.6
35-39	18	10.8	53	10.9	0	0.0	5	13.2	15	10.1	42	10.2
40-44	2	1.2	7	1.4	0	0.0	0	0.0	2	1.3	6	1.5
45+	1	0.6	1	0.2	0	0.0	0	0.0	1	0.7	1	0.2
REPORTED DRINKING	9	5.5	29	6.1	0	0.0	0	0.0	9	6.1	29	7.2
REPORTED SMOKING	82	49.1	213	44.3	1	10.0	4	10.5	81	54.4	207	50.7
UNWED	102	61.1	276	57.1	3	30.0	3	7.9	98	65.8	259	63.2
EDUCATION												
<12 YEARS	45	28.5	126	27.0	0	0.0	0	0.0	45	31.9	122	31.0
12 YEARS	90	57.0	262	56.2	5	55.6	18	47.4	81	57.4	229	58.3
12+ YEARS	23	14.6	78	16.7	4	44.4	20	52.6	15	10.6	42	10.7
PRENATAL CARE												
TRIMESTER CARE BEGAN												
1ST TRIMESTER	110	69.2	335	71.6	8	88.9	29	76.3	95	66.9	277	69.9
3RD TRIMESTER	17	10.7	45	9.6	1	11.1	3	7.9	16	11.3	40	10.1
NO PRENATAL CARE	2	1.3	5	1.1	0	0.0	0	0.0	2	1.4	5	1.3
APNCU INDEX												
ADEQUATE+	17	10.7	76	16.3	0	0.0	8	21.6	15	10.6	63	15.9
ADEQUATE	52	32.7	132	28.3	4	44.4	14	37.8	44	31.0	105	26.4
INTERMEDIATE	42	26.4	126	27.0	3	33.3	8	21.6	39	27.5	110	27.7
INADEQUATE	48	30.2	133	28.5	2	22.2	7	18.9	44	31.0	119	30.0
KESSNER INDEX												
ADEQUATE	63	39.4	214	45.5	6	66.7	25	65.8	51	35.7	169	42.5
INTERMEDIATE	78	48.8	206	43.8	2	22.2	10	26.3	74	51.7	184	46.2
INADEQUATE	19	11.9	50	10.6	1	11.1	3	7.9	18	12.6	45	11.3
C-SECTION BIRTHS	17	10.1	55	11.3	0	0.0	6	15.4	15	10.1	39	9.5
PRE-TERM BIRTHS	26	15.5	62	12.8	0	0.0	3	7.7	25	16.8	55	13.4
LOW BIRTHWEIGHT	12	7.1	32	6.6	0	0.0	2	5.1	10	6.7	26	6.3

Note: Unknown responses are excluded from the denominator when calculating percentages.

TABLE 3 SELECTED BIRTH STATISTICS REPORTED BY MOTHER'S RACE AND NATIVE REGIONAL CORPORATION OF RESIDENCE: 2002 AND 2000-2002 BERING STRAITS NATIVE CORPORATION

	TOTAL				WHITE				NATIVE			
	2002 NUMBER	2002 %	2000-2002 NUMBER	2000-2002 %	2002 NUMBER	2002 %	2000-2002 NUMBER	2000-2002 %	2002 NUMBER	2002 %	2000-2002 NUMBER	2000-2002 %
BIRTHS												
WITHIN AREA	99	100.0	309	100.0	4	4.0	14	4.5	92	92.9	290	93.9
TO RESIDENTS	212	100.0	637	100.0	23	10.8	78	12.2	185	87.3	553	86.8
FACILITY												
HOSPITAL	208	98.1	621	97.5	21	91.3	68	87.2	184	99.5	548	99.1
BIRTHING CENTER	0	0.0	3	0.5	0	0.0	2	2.6	0	0.0	1	0.2
HOME	1	0.5	2	0.3	0	0.0	1	1.3	0	0.0	0	0.0
CLINIC	1	0.5	4	0.6	0	0.0	0	0.0	1	0.5	4	0.7
OUTSIDE ALASKA	2	0.9	7	1.1	2	8.7	7	9.0	0	0.0	0	0.0
MOTHER CHARACTERISTICS												
AGE GROUP												
<15	2	0.9	6	0.9	0	0.0	0	0.0	2	1.1	6	1.1
15-19	37	17.4	109	17.1	1	4.3	2	2.6	36	19.5	107	19.3
15-17	17	8.0	45	7.1	0	0.0	0	0.0	17	9.2	45	8.1
18-19	20	9.4	64	10.0	1	4.3	2	2.6	19	10.3	62	11.2
20-24	50	23.6	186	29.2	7	30.4	18	23.1	42	22.7	166	30.0
25-29	62	29.2	167	26.2	2	8.7	18	23.1	58	31.4	147	26.6
30-34	37	17.5	98	15.4	9	39.1	24	30.8	28	15.1	73	13.2
35-39	19	9.0	59	9.3	4	17.4	14	17.9	14	7.6	44	8.0
40-44	5	2.4	12	1.9	0	0.0	2	2.6	5	2.7	10	1.8
45+	0	0.0	0	0.0	0	0.0	0	0.0	0	0.0	0	0.0
REPORTED DRINKING	22	10.5	55	8.8	0	0.0	2	2.7	22	12.0	53	9.8
REPORTED SMOKING	109	51.9	308	49.1	2	8.7	9	11.7	107	58.2	298	54.7
UNWED	135	63.7	390	61.4	5	21.7	13	16.9	130	70.3	377	68.3
EDUCATION												
<12 YEARS	63	30.4	159	25.7	3	14.3	5	6.6	60	32.6	154	28.6
12 YEARS	117	56.5	358	57.9	5	23.8	17	22.4	112	60.9	339	63.0
12+ YEARS	27	13.0	101	16.3	13	61.9	54	71.1	12	6.5	45	8.4
PRENATAL CARE												
TRIMESTER CARE BEGAN												
1ST TRIMESTER	157	77.3	497	81.3	20	90.9	69	92.0	134	75.3	423	79.7
3RD TRIMESTER	5	2.5	22	3.6	0	0.0	1	1.3	5	2.8	21	4.0
NO PRENATAL CARE	1	0.5	9	1.5	0	0.0	0	0.0	1	0.6	9	1.7
APNCU INDEX												
ADEQUATE+	56	27.6	137	22.3	7	31.8	16	21.6	49	27.5	121	22.7
ADEQUATE	58	28.6	217	35.4	11	50.0	34	45.9	44	24.7	180	33.7
INTERMEDIATE	56	27.6	161	26.3	3	13.6	19	25.7	53	29.8	140	26.2
INADEQUATE	33	16.3	98	16.0	1	4.5	5	6.8	32	18.0	93	17.4
KESSNER INDEX												
ADEQUATE	110	54.2	374	61.0	17	77.3	56	75.7	90	50.6	314	58.8
INTERMEDIATE	87	42.9	208	33.9	5	22.7	17	23.0	82	46.1	190	35.6
INADEQUATE	6	3.0	31	5.1	0	0.0	1	1.4	6	3.4	30	5.6
C-SECTION BIRTHS	11	5.2	39	6.1	3	13.0	11	14.1	8	4.3	28	5.1
PRE-TERM BIRTHS	29	13.7	80	12.6	0	0.0	5	6.4	29	15.7	75	13.6
LOW BIRTHWEIGHT	12	5.7	33	5.2	0	0.0	4	5.1	12	6.5	29	5.2

Note: Unknown responses are excluded from the denominator when calculating percentages.

TABLE 3 SELECTED BIRTH STATISTICS REPORTED BY MOTHER'S RACE AND NATIVE REGIONAL CORPORATION OF RESIDENCE: 2002 AND 2000-2002 BRISTOL BAY NATIVE CORPORATION

	TOTAL				WHITE				NATIVE			
	2002 NUMBER	2002 %	2000-2002 NUMBER	2000-2002 %	2002 NUMBER	2002 %	2000-2002 NUMBER	2000-2002 %	2002 NUMBER	2002 %	2000-2002 NUMBER	2000-2002 %
BIRTHS												
WITHIN AREA	56	100.0	166	100.0	4	7.1	10	6.0	50	89.3	154	92.8
TO RESIDENTS	134	100.0	385	100.0	32	23.9	86	22.3	98	73.1	292	75.8
FACILITY												
HOSPITAL	124	92.5	362	94.0	26	81.3	72	83.7	95	96.9	284	97.3
BIRTHING CENTER	1	0.7	1	0.3	1	3.1	1	1.2	0	0.0	0	0.0
HOME	2	1.5	4	1.0	1	3.1	1	1.2	1	1.0	3	1.0
CLINIC	3	2.2	6	1.6	0	0.0	1	1.2	2	2.0	4	1.4
OUTSIDE ALASKA	4	3.0	12	3.1	4	12.5	11	12.8	0	0.0	1	0.3
MOTHER CHARACTERISTICS												
AGE GROUP												
<15	1	0.7	1	0.3	0	0.0	0	0.0	1	1.0	1	0.3
15-19	17	12.7	60	15.6	0	0.0	2	2.3	17	17.4	58	19.9
15-17	8	6.0	30	7.8	0	0.0	0	0.0	8	8.2	30	10.3
18-19	9	6.7	30	7.8	0	0.0	2	2.3	9	9.2	28	9.6
20-24	41	30.6	108	28.1	9	28.1	15	17.4	31	31.6	90	30.8
25-29	39	29.1	95	24.7	12	37.5	32	37.2	26	26.5	62	21.2
30-34	22	16.4	77	20.0	7	21.9	24	27.9	14	14.3	52	17.8
35-39	14	10.4	34	8.8	4	12.5	8	9.3	9	9.2	24	8.2
40-44	0	0.0	9	2.3	0	0.0	5	5.8	0	0.0	4	1.4
45+	0	0.0	1	0.3	0	0.0	0	0.0	0	0.0	1	0.3
REPORTED DRINKING	6	4.5	20	5.2	3	9.7	7	8.3	3	3.1	13	4.5
REPORTED SMOKING	54	40.3	152	39.5	6	18.8	11	12.8	48	49.0	140	47.9
UNWED	62	46.3	187	48.7	8	25.0	18	21.2	53	54.1	167	57.2
EDUCATION												
<12 YEARS	22	16.7	67	17.6	0	0.0	3	3.6	22	22.9	63	21.7
12 YEARS	71	53.8	211	55.4	12	37.5	31	36.9	58	60.4	178	61.4
12+ YEARS	39	29.5	103	27.0	20	62.5	50	59.5	16	16.7	49	16.9
PRENATAL CARE												
TRIMESTER CARE BEGAN												
1ST TRIMESTER	104	78.8	273	71.8	27	84.4	73	84.9	73	76.0	194	67.6
3RD TRIMESTER	8	6.1	46	12.1	2	6.3	6	7.0	6	6.3	40	13.9
NO PRENATAL CARE	1	0.8	5	1.3	0	0.0	0	0.0	1	1.0	5	1.7
APNCU INDEX												
ADEQUATE+	26	19.8	82	21.6	6	20.0	13	15.9	19	19.6	67	23.1
ADEQUATE	32	24.4	99	26.1	10	33.3	34	41.5	21	21.6	63	21.7
INTERMEDIATE	39	29.8	83	21.9	7	23.3	19	23.2	30	30.9	62	21.4
INADEQUATE	34	26.0	115	30.3	7	23.3	16	19.5	27	27.8	98	33.8
KESSNER INDEX												
ADEQUATE	64	48.9	194	51.1	18	60.0	54	65.9	43	44.3	135	46.4
INTERMEDIATE	58	44.3	135	35.5	10	33.3	22	26.8	47	48.5	111	38.1
INADEQUATE	9	6.9	51	13.4	2	6.7	6	7.3	7	7.2	45	15.5
C-SECTION BIRTHS	15	11.2	45	11.7	9	28.1	27	31.4	6	6.1	18	6.2
PRE-TERM BIRTHS	16	11.9	54	14.0	4	12.5	9	10.5	11	11.2	44	15.1
LOW BIRTHWEIGHT	3	2.2	22	5.7	0	0.0	4	4.7	3	3.1	18	6.2

Note: Unknown responses are excluded from the denominator when calculating percentages.

TABLE 3 SELECTED BIRTH STATISTICS REPORTED BY MOTHER'S RACE AND NATIVE REGIONAL CORPORATION OF RESIDENCE: 2002 AND 2000-2002 CALISTA CORPORATION

	TOTAL				WHITE				NATIVE			
	2002 NUMBER	2002 %	2000-2002 NUMBER	2000-2002 %	2002 NUMBER	2002 %	2000-2002 NUMBER	2000-2002 %	2002 NUMBER	2002 %	2000-2002 NUMBER	2000-2002 %
BIRTHS												
WITHIN AREA	344	100.0	1,141	100.0	9	2.6	24	2.1	330	95.9	1,105	96.8
TO RESIDENTS	617	100.0	1,926	100.0	32	5.2	91	4.7	579	93.8	1,821	94.5
FACILITY												
HOSPITAL	614	99.5	1,901	98.7	29	90.6	81	89.0	579	100.0	1,806	99.2
BIRTHING CENTER	1	0.2	2	0.1	1	3.1	2	2.2	0	0.0	0	0.0
HOME	0	0.0	2	0.1	0	0.0	1	1.1	0	0.0	1	0.1
CLINIC	0	0.0	12	0.6	0	0.0	0	0.0	0	0.0	12	0.7
OUTSIDE ALASKA	2	0.3	9	0.5	2	6.3	7	7.7	0	0.0	2	0.1
MOTHER CHARACTERISTICS												
AGE GROUP												
<15	0	0.0	3	0.2	0	0.0	0	0.0	0	0.0	3	0.2
15-19	94	15.2	300	15.6	1	3.1	1	1.1	92	15.9	298	16.4
15-17	34	5.5	111	5.8	1	3.1	1	1.1	32	5.5	109	6.0
18-19	60	9.7	189	9.8	0	0.0	0	0.0	60	10.4	189	10.4
20-24	186	30.1	541	28.1	5	15.6	14	15.4	179	30.9	524	28.8
25-29	166	26.9	520	27.0	8	25.0	30	33.0	156	26.9	487	26.7
30-34	96	15.6	322	16.7	8	25.0	29	31.9	88	15.2	288	15.8
35-39	53	8.6	183	9.5	5	15.6	11	12.1	47	8.1	171	9.4
40-44	22	3.6	55	2.9	5	15.6	6	6.6	17	2.9	48	2.6
45+	0	0.0	2	0.1	0	0.0	0	0.0	0	0.0	2	0.1
REPORTED DRINKING	41	6.7	112	5.9	1	3.3	2	2.4	40	6.9	110	6.1
REPORTED SMOKING	120	19.5	410	21.4	2	6.5	7	7.9	117	20.3	402	22.2
UNWED	323	52.5	969	50.5	6	19.4	11	12.2	314	54.3	954	52.6
EDUCATION												
<12 YEARS	140	23.4	456	24.6	2	6.9	2	2.4	138	24.3	454	25.8
12 YEARS	385	64.3	1,165	62.8	3	10.3	19	22.4	381	67.0	1,142	64.8
12+ YEARS	74	12.4	234	12.6	24	82.8	64	75.3	50	8.8	165	9.4
PRENATAL CARE												
TRIMESTER CARE BEGAN												
1ST TRIMESTER	351	58.2	1,116	59.3	20	64.5	63	73.3	328	57.8	1,043	58.5
3RD TRIMESTER	58	9.6	215	11.4	2	6.5	7	8.1	56	9.9	208	11.7
NO PRENATAL CARE	4	0.7	13	0.7	0	0.0	1	1.2	4	0.7	12	0.7
APNCU INDEX												
ADEQUATE+	52	8.7	176	9.4	4	12.9	15	17.9	48	8.5	161	9.1
ADEQUATE	86	14.3	348	18.6	13	41.9	32	38.1	73	12.9	313	17.7
INTERMEDIATE	180	30.0	511	27.4	5	16.1	15	17.9	172	30.5	490	27.7
INADEQUATE	282	47.0	831	44.5	9	29.0	22	26.2	271	48.0	806	45.5
KESSNER INDEX												
ADEQUATE	135	22.5	504	26.9	19	61.3	52	61.9	115	20.4	447	25.2
INTERMEDIATE	404	67.2	1,139	60.9	10	32.3	24	28.6	390	69.0	1,108	62.4
INADEQUATE	62	10.3	228	12.2	2	6.5	8	9.5	60	10.6	220	12.4
C-SECTION BIRTHS	50	8.1	151	7.8	6	18.8	20	22.0	43	7.4	128	7.0
PRE-TERM BIRTHS	84	13.6	271	14.1	1	3.1	3	3.3	82	14.2	266	14.6
LOW BIRTHWEIGHT	40	6.5	114	5.9	0	0.0	0	0.0	39	6.7	113	6.2

Note: Unknown responses are excluded from the denominator when calculating percentages.

**TABLE 3 SELECTED BIRTH STATISTICS REPORTED BY MOTHER'S RACE AND NATIVE REGIONAL CORPORATION OF RESIDENCE: 2002 AND 2000-2002
CHUGACH ALASKA CORPORATION**

	TOTAL				WHITE				NATIVE			
	2002 NUMBER	2002 %	2000-2002 NUMBER	2000-2002 %	2002 NUMBER	2002 %	2000-2002 NUMBER	2000-2002 %	2002 NUMBER	2002 %	2000-2002 NUMBER	2000-2002 %
BIRTHS												
WITHIN AREA	39	100.0	127	100.0	35	89.7	103	81.1	2	5.1	14	11.0
TO RESIDENTS	132	100.0	416	100.0	99	75.0	299	71.9	25	18.9	83	20.0
FACILITY												
HOSPITAL	129	97.7	395	95.0	96	97.0	280	93.6	25	100.0	83	100.0
BIRTHING CENTER	2	1.5	7	1.7	2	2.0	6	2.0	0	0.0	0	0.0
HOME	0	0.0	5	1.2	0	0.0	4	1.3	0	0.0	0	0.0
CLINIC	0	0.0	0	0.0	0	0.0	0	0.0	0	0.0	0	0.0
OUTSIDE ALASKA	1	0.8	9	2.2	1	1.0	9	3.0	0	0.0	0	0.0
MOTHER CHARACTERISTICS												
AGE GROUP												
<15	0	0.0	0	0.0	0	0.0	0	0.0	0	0.0	0	0.0
15-19	7	5.3	30	7.2	3	3.0	15	5.0	4	16.0	13	15.7
15-17	2	1.5	6	1.4	1	1.0	3	1.0	1	4.0	2	2.4
18-19	5	3.8	24	5.8	2	2.0	12	4.0	3	12.0	11	13.3
20-24	31	23.5	101	24.3	28	28.3	77	25.8	2	8.0	18	21.7
25-29	39	29.5	112	26.9	24	24.2	78	26.1	10	40.0	24	28.9
30-34	29	22.0	99	23.8	20	20.2	72	24.1	8	32.0	19	22.9
35-39	21	15.9	58	13.9	20	20.2	45	15.1	1	4.0	7	8.4
40-44	5	3.8	15	3.6	4	4.0	11	3.7	0	0.0	2	2.4
45+	0	0.0	1	0.2	0	0.0	1	0.3	0	0.0	0	0.0
REPORTED DRINKING	4	3.1	12	2.9	2	2.1	8	2.7	2	8.0	4	4.8
REPORTED SMOKING	22	16.8	75	18.2	11	11.2	42	14.2	11	44.0	30	36.6
UNWED	37	28.0	118	28.4	24	24.2	71	23.8	10	40.0	37	44.6
EDUCATION												
<12 YEARS	14	11.1	38	9.4	10	10.8	24	8.3	3	12.0	11	13.6
12 YEARS	49	38.9	153	38.0	29	31.2	96	33.2	18	72.0	45	55.6
12+ YEARS	63	50.0	212	52.6	54	58.1	169	58.5	4	16.0	25	30.9
PRENATAL CARE												
TRIMESTER CARE BEGAN												
1ST TRIMESTER	97	75.8	323	80.3	77	78.6	244	83.6	13	59.1	54	70.1
3RD TRIMESTER	7	5.5	16	4.0	4	4.1	7	2.4	3	13.6	6	7.8
NO PRENATAL CARE	0	0.0	1	0.3	0	0.0	1	0.4	0	0.0	0	0.0
APNCU INDEX												
ADEQUATE+	24	19.4	86	22.6	16	16.8	60	21.7	6	28.6	19	25.3
ADEQUATE	51	41.1	148	38.9	42	44.2	118	42.6	5	23.8	20	26.7
INTERMEDIATE	29	23.4	89	23.4	23	24.2	65	23.5	4	19.0	19	25.3
INADEQUATE	20	16.1	57	15.0	14	14.7	34	12.3	6	28.6	17	22.7
KESSNER INDEX												
ADEQUATE	80	64.5	245	64.1	63	66.3	190	68.3	11	52.4	39	52.0
INTERMEDIATE	37	29.8	120	31.4	28	29.5	80	28.8	7	33.3	30	40.0
INADEQUATE	7	5.6	17	4.5	4	4.2	8	2.9	3	14.3	6	8.0
C-SECTION BIRTHS	33	25.0	84	20.2	23	23.2	64	21.4	7	28.0	15	18.1
PRE-TERM BIRTHS	10	7.6	37	8.9	8	8.1	24	8.0	2	8.0	7	8.4
LOW BIRTHWEIGHT	8	6.1	32	7.7	7	7.1	25	8.4	1	4.0	3	3.6

Note: Unknown responses are excluded from the denominator when calculating percentages.

TABLE 3 SELECTED BIRTH STATISTICS REPORTED BY MOTHER'S RACE AND NATIVE REGIONAL CORPORATION OF RESIDENCE: 2002 AND 2000-2002 COOK INLET REGION INCORPORATED

	TOTAL				WHITE				NATIVE			
	2002 NUMBER	2002 %	2000-2002 NUMBER	2000-2002 %	2002 NUMBER	2002 %	2000-2002 NUMBER	2000-2002 %	2002 NUMBER	2002 %	2000-2002 NUMBER	2000-2002 %
BIRTHS												
WITHIN AREA	6,472	100.0	19,236	100.0	4,232	65.4	12,697	66.0	1,332	20.6	3,949	20.5
TO RESIDENTS	5,576	100.0	16,685	100.0	4,027	72.2	12,153	72.8	674	12.1	2,041	12.2
FACILITY												
HOSPITAL	5,299	95.0	15,825	94.8	3,772	93.7	11,364	93.5	667	99.0	2,022	99.1
BIRTHING CENTER	157	2.8	518	3.1	146	3.6	487	4.0	5	0.7	12	0.6
HOME	92	1.6	251	1.5	88	2.2	230	1.9	1	0.1	4	0.2
CLINIC	3	0.1	6	0.0	3	0.1	6	0.0	0	0.0	0	0.0
OUTSIDE ALASKA	25	0.4	85	0.5	18	0.4	66	0.5	1	0.1	3	0.1
MOTHER CHARACTERISTICS												
AGE GROUP												
<15	9	0.2	22	0.1	5	0.1	10	0.1	2	0.3	5	0.2
15-19	562	10.1	1,730	10.4	340	8.5	1,055	8.7	114	17.0	351	17.2
15-17	152	2.7	495	3.0	87	2.2	266	2.2	34	5.1	124	6.1
18-19	410	7.4	1,235	7.4	253	6.3	789	6.5	80	11.9	227	11.1
20-24	1,558	28.0	4,518	27.1	1,086	27.0	3,163	26.0	226	33.6	674	33.0
25-29	1,427	25.6	4,439	26.6	1,038	25.8	3,286	27.1	171	25.4	512	25.1
30-34	1,245	22.4	3,624	21.7	963	24.0	2,803	23.1	98	14.6	309	15.1
35-39	596	10.7	1,841	11.0	453	11.3	1,436	11.8	50	7.4	151	7.4
40-44	163	2.9	477	2.9	129	3.2	374	3.1	12	1.8	36	1.8
45+	7	0.1	21	0.1	6	0.1	16	0.1	0	0.0	2	0.1
REPORTED DRINKING	122	2.2	367	2.2	70	1.8	220	1.8	39	5.8	115	5.7
REPORTED SMOKING	842	15.3	2,554	15.5	520	13.0	1,645	13.6	244	36.3	677	33.4
UNWED	1,764	31.7	5,142	30.9	1,009	25.1	2,983	24.6	413	61.4	1,204	59.3
EDUCATION												
<12 YEARS	720	13.5	2,081	12.9	402	10.4	1,151	9.7	202	30.3	581	29.0
12 YEARS	2,260	42.5	6,641	41.1	1,561	40.3	4,660	39.2	323	48.4	970	48.4
12+ YEARS	2,338	44.0	7,452	46.1	1,907	49.3	6,067	51.1	142	21.3	452	22.6
PRENATAL CARE												
TRIMESTER CARE BEGAN												
1ST TRIMESTER	4,442	83.6	13,578	84.4	3,298	85.0	10,161	85.8	518	78.4	1,593	79.9
3RD TRIMESTER	197	3.7	479	3.0	142	3.7	314	2.7	24	3.6	69	3.5
NO PRENATAL CARE	26	0.5	70	0.5	15	0.4	34	0.3	6	0.9	21	1.1
APNCU INDEX												
ADEQUATE+	1,332	27.1	4,269	28.1	1,003	28.0	3,229	29.1	139	21.4	480	24.3
ADEQUATE	2,141	43.6	6,969	46.0	1,612	45.1	5,263	47.4	263	40.4	841	42.6
INTERMEDIATE	842	17.1	2,290	15.1	582	16.3	1,587	14.3	128	19.7	332	16.8
INADEQUATE	595	12.1	1,638	10.8	381	10.6	1,031	9.3	121	18.6	321	16.3
KESSNER INDEX												
ADEQUATE	3,703	75.2	11,675	76.8	2,802	78.1	8,862	79.6	414	63.6	1,314	66.5
INTERMEDIATE	998	20.3	2,980	19.6	629	17.5	1,922	17.3	207	31.8	573	29.0
INADEQUATE	223	4.5	549	3.6	157	4.4	348	3.1	30	4.6	90	4.6
C-SECTION BIRTHS	1,164	20.9	3,387	20.3	887	22.0	2,578	21.2	67	9.9	243	11.9
PRE-TERM BIRTHS	521	9.3	1,620	9.7	352	8.7	1,084	8.9	63	9.3	215	10.5
LOW BIRTHWEIGHT	338	6.1	994	6.0	208	5.2	612	5.0	40	5.9	137	6.7

Note: Unknown responses are excluded from the denominator when calculating percentages.

TABLE 3 SELECTED BIRTH STATISTICS REPORTED BY MOTHER'S RACE AND NATIVE REGIONAL CORPORATION OF RESIDENCE: 2002 AND 2000-2002 DOYON LIMITED

	TOTAL				WHITE				NATIVE			
	2002 NUMBER	2002 %	2000-2002 NUMBER	2000-2002 %	2002 NUMBER	2002 %	2000-2002 NUMBER	2000-2002 %	2002 NUMBER	2002 %	2000-2002 NUMBER	2000-2002 %
BIRTHS												
WITHIN AREA	1,724	100.0	5,110	100.0	1,249	72.4	3,720	72.8	246	14.3	712	13.9
TO RESIDENTS	1,739	100.0	5,173	100.0	1,257	72.3	3,742	72.3	251	14.4	741	14.3
FACILITY												
HOSPITAL	1,649	94.8	4,905	94.8	1,171	93.2	3,496	93.4	251	100.0	734	99.1
BIRTHING CENTER	62	3.6	167	3.2	60	4.8	157	4.2	0	0.0	3	0.4
HOME	16	0.9	59	1.1	15	1.2	55	1.5	0	0.0	1	0.1
CLINIC	3	0.2	10	0.2	3	0.2	9	0.2	0	0.0	1	0.1
OUTSIDE ALASKA	9	0.5	32	0.6	8	0.6	25	0.7	0	0.0	2	0.3
MOTHER CHARACTERISTICS												
AGE GROUP												
<15	2	0.1	9	0.2	1	0.1	7	0.2	1	0.4	1	0.1
15-19	178	10.3	506	9.8	107	8.5	298	8.0	50	20.0	146	19.7
15-17	62	3.6	160	3.1	35	2.8	86	2.3	23	9.2	56	7.6
18-19	116	6.7	346	6.7	72	5.7	212	5.7	27	10.8	90	12.1
20-24	551	31.7	1,636	31.6	389	30.9	1,155	30.9	76	30.3	238	32.1
25-29	470	27.0	1,436	27.8	364	29.0	1,072	28.6	56	22.3	192	25.9
30-34	322	18.5	979	18.9	231	18.4	737	19.7	44	17.5	101	13.6
35-39	164	9.4	481	9.3	120	9.5	367	9.8	19	7.6	51	6.9
40-44	51	2.9	121	2.3	44	3.5	102	2.7	5	2.0	12	1.6
45+	1	0.1	5	0.1	1	0.1	4	0.1	0	0.0	0	0.0
REPORTED DRINKING	19	1.1	51	1.0	11	0.9	21	0.6	7	2.8	27	3.7
REPORTED SMOKING	286	16.5	759	14.7	183	14.6	476	12.7	86	34.3	229	31.0
UNWED	461	26.5	1,333	25.8	236	18.8	679	18.2	162	64.5	473	63.8
EDUCATION												
<12 YEARS	180	11.0	524	10.6	107	8.8	314	8.6	61	26.8	172	24.9
12 YEARS	646	39.3	2,202	44.5	459	37.6	1,570	42.8	104	45.6	360	52.0
12+ YEARS	816	49.7	2,219	44.9	656	53.7	1,787	48.7	63	27.6	160	23.1
PRENATAL CARE												
TRIMESTER CARE BEGAN												
1ST TRIMESTER	1,329	78.7	3,862	76.7	1,003	81.7	2,911	79.5	149	62.9	437	61.8
3RD TRIMESTER	74	4.4	252	5.0	43	3.5	157	4.3	19	8.0	64	9.1
NO PRENATAL CARE	6	0.4	12	0.2	4	0.3	9	0.2	1	0.4	1	0.1
APNCU INDEX												
ADEQUATE+	330	19.5	1,038	20.6	248	20.2	763	20.9	32	13.5	113	16.0
ADEQUATE	702	41.6	2,014	40.0	544	44.3	1,562	42.7	70	29.5	197	27.9
INTERMEDIATE	380	22.5	1,050	20.9	262	21.3	741	20.3	68	28.7	167	23.7
INADEQUATE	277	16.4	930	18.5	174	14.2	591	16.2	67	28.3	229	32.4
KESSNER INDEX												
ADEQUATE	1,103	65.3	3,192	63.4	853	69.5	2,449	66.9	107	45.1	316	44.8
INTERMEDIATE	506	30.0	1,578	31.3	328	26.7	1,044	28.5	110	46.4	325	46.0
INADEQUATE	80	4.7	264	5.2	47	3.8	166	4.5	20	8.4	65	9.2
C-SECTION BIRTHS	329	18.9	872	16.9	238	18.9	623	16.6	47	18.7	127	17.1
PRE-TERM BIRTHS	161	9.3	468	9.0	98	7.8	314	8.4	34	13.5	84	11.3
LOW BIRTHWEIGHT	94	5.4	275	5.3	64	5.1	192	5.1	13	5.2	37	5.0

Note: Unknown responses are excluded from the denominator when calculating percentages.

TABLE 3 SELECTED BIRTH STATISTICS REPORTED BY MOTHER'S RACE AND NATIVE REGIONAL CORPORATION OF RESIDENCE: 2002 AND 2000-2002 KONIAG INCORPORATED

	TOTAL				WHITE				NATIVE			
	2002 NUMBER	2002 %	2000-2002 NUMBER	2000-2002 %	2002 NUMBER	2002 %	2000-2002 NUMBER	2000-2002 %	2002 NUMBER	2002 %	2000-2002 NUMBER	2000-2002 %
BIRTHS												
WITHIN AREA	194	100.0	608	100.0	124	63.9	371	61.0	21	10.8	90	14.8
TO RESIDENTS	212	100.0	659	100.0	132	62.3	394	59.8	27	12.7	110	16.7
FACILITY												
HOSPITAL	206	97.2	640	97.1	126	95.5	376	95.4	27	100.0	109	99.1
BIRTHING CENTER	0	0.0	0	0.0	0	0.0	0	0.0	0	0.0	0	0.0
HOME	5	2.4	17	2.6	5	3.8	16	4.1	0	0.0	1	0.9
CLINIC	0	0.0	0	0.0	0	0.0	0	0.0	0	0.0	0	0.0
OUTSIDE ALASKA	1	0.5	2	0.3	1	0.8	2	0.5	0	0.0	0	0.0
MOTHER CHARACTERISTICS												
AGE GROUP												
<15	0	0.0	1	0.2	0	0.0	1	0.3	0	0.0	0	0.0
15-19	16	7.5	38	5.8	12	9.1	23	5.8	3	11.1	10	9.1
15-17	3	1.4	11	1.7	2	1.5	4	1.0	1	3.7	4	3.6
18-19	13	6.1	27	4.1	10	7.6	19	4.8	2	7.4	6	5.5
20-24	50	23.6	169	25.6	33	25.0	98	24.9	7	25.9	33	30.0
25-29	62	29.2	174	26.4	37	28.0	104	26.4	8	29.6	33	30.0
30-34	44	20.8	153	23.2	25	18.9	96	24.4	6	22.2	19	17.3
35-39	26	12.3	89	13.5	16	12.1	53	13.5	2	7.4	10	9.1
40-44	12	5.7	33	5.0	7	5.3	17	4.3	1	3.7	5	4.5
45+	2	0.9	2	0.3	2	1.5	2	0.5	0	0.0	0	0.0
REPORTED DRINKING	5	2.4	13	2.0	4	3.1	6	1.5	1	3.8	7	6.7
REPORTED SMOKING	21	10.1	88	13.6	13	9.9	45	11.5	4	15.4	37	35.2
UNWED	49	23.1	165	25.0	24	18.2	69	17.5	9	33.3	41	37.3
EDUCATION												
<12 YEARS	18	8.9	72	11.2	13	10.1	32	8.2	2	7.4	16	14.5
12 YEARS	78	38.6	244	37.9	42	32.6	126	32.4	13	48.1	55	50.0
12+ YEARS	106	52.5	327	50.9	74	57.4	231	59.4	12	44.4	39	35.5
PRENATAL CARE												
TRIMESTER CARE BEGAN												
1ST TRIMESTER	173	83.2	531	81.6	114	87.0	338	86.4	22	84.6	89	82.4
3RD TRIMESTER	3	1.4	17	2.6	1	0.8	9	2.3	0	0.0	2	1.9
NO PRENATAL CARE	1	0.5	1	0.2	0	0.0	0	0.0	0	0.0	0	0.0
APNCU INDEX												
ADEQUATE+	36	17.6	113	17.6	19	14.8	67	17.4	10	40.0	24	23.1
ADEQUATE	81	39.7	239	37.2	57	44.5	159	41.2	6	24.0	33	31.7
INTERMEDIATE	63	30.9	202	31.5	43	33.6	122	31.6	7	28.0	31	29.8
INADEQUATE	24	11.8	88	13.7	9	7.0	38	9.8	2	8.0	16	15.4
KESSNER INDEX												
ADEQUATE	134	65.7	416	64.8	94	73.4	279	72.3	18	72.0	70	67.3
INTERMEDIATE	66	32.4	208	32.4	33	25.8	98	25.4	7	28.0	32	30.8
INADEQUATE	4	2.0	18	2.8	1	0.8	9	2.3	0	0.0	2	1.9
C-SECTION BIRTHS	41	19.3	121	18.4	22	16.7	71	18.0	8	29.6	25	22.7
PRE-TERM BIRTHS	20	9.4	67	10.2	8	6.1	31	7.9	3	11.1	12	10.9
LOW BIRTHWEIGHT	11	5.2	39	5.9	6	4.5	20	5.1	0	0.0	3	2.7

Note: Unknown responses are excluded from the denominator when calculating percentages.

TABLE 3 SELECTED BIRTH STATISTICS REPORTED BY MOTHER'S RACE AND NATIVE REGIONAL CORPORATION OF RESIDENCE: 2002 AND 2000-2002
NANA REGIONAL CORPORATION

	TOTAL				WHITE				NATIVE			
	2002 NUMBER	2002 %	2000-2002 NUMBER	2000-2002 %	2002 NUMBER	2002 %	2000-2002 NUMBER	2000-2002 %	2002 NUMBER	2002 %	2000-2002 NUMBER	2000-2002 %
BIRTHS												
WITHIN AREA	84	100.0	279	100.0	4	4.8	9	3.2	80	95.2	270	96.8
TO RESIDENTS	161	100.0	478	100.0	16	9.9	31	6.5	144	89.4	444	92.9
FACILITY												
HOSPITAL	158	98.1	470	98.3	14	87.5	28	90.3	143	99.3	439	98.9
BIRTHING CENTER	1	0.6	1	0.2	1	6.3	1	3.2	0	0.0	0	0.0
HOME	1	0.6	3	0.6	0	0.0	0	0.0	1	0.7	3	0.7
CLINIC	0	0.0	2	0.4	0	0.0	0	0.0	0	0.0	2	0.5
OUTSIDE ALASKA	1	0.6	2	0.4	1	6.3	2	6.5	0	0.0	0	0.0
MOTHER CHARACTERISTICS												
AGE GROUP												
<15	0	0.0	0	0.0	0	0.0	0	0.0	0	0.0	0	0.0
15-19	32	19.9	99	20.7	2	12.5	4	12.9	30	20.8	95	21.4
15-17	12	7.5	35	7.3	2	12.5	3	9.7	10	6.9	32	7.2
18-19	20	12.4	64	13.4	0	0.0	1	3.2	20	13.9	63	14.2
20-24	47	29.2	134	28.0	2	12.5	3	9.7	44	30.6	130	29.3
25-29	41	25.5	110	23.0	5	31.3	11	35.5	36	25.0	98	22.1
30-34	23	14.3	82	17.2	4	25.0	8	25.8	19	13.2	73	16.4
35-39	16	9.9	43	9.0	2	12.5	4	12.9	14	9.7	39	8.8
40-44	2	1.2	10	2.1	1	6.3	1	3.2	1	0.7	9	2.0
45+	0	0.0	0	0.0	0	0.0	0	0.0	0	0.0	0	0.0
REPORTED DRINKING	8	5.0	39	8.2	1	6.3	1	3.2	7	4.9	37	8.4
REPORTED SMOKING	84	52.8	239	50.3	1	6.3	3	9.7	83	58.0	236	53.4
UNWED	102	63.8	290	61.3	5	31.3	10	32.3	97	67.4	280	63.6
EDUCATION												
<12 YEARS	65	41.4	167	37.4	1	7.1	3	11.1	64	44.8	164	39.3
12 YEARS	73	46.5	236	52.9	1	7.1	3	11.1	72	50.3	233	55.9
12+ YEARS	19	12.1	43	9.6	12	85.7	21	77.8	7	4.9	20	4.8
PRENATAL CARE												
TRIMESTER CARE BEGAN												
1ST TRIMESTER	109	71.2	329	70.9	13	81.3	22	71.0	96	70.1	305	70.8
3RD TRIMESTER	10	6.5	31	6.7	2	12.5	3	9.7	8	5.8	28	6.5
NO PRENATAL CARE	0	0.0	3	0.7	0	0.0	0	0.0	0	0.0	3	0.7
APNCU INDEX												
ADEQUATE+	28	18.4	86	18.7	3	18.8	8	25.8	25	18.4	78	18.3
ADEQUATE	37	24.3	109	23.7	5	31.3	8	25.8	32	23.5	101	23.7
INTERMEDIATE	43	28.3	126	27.4	4	25.0	9	29.0	39	28.7	115	26.9
INADEQUATE	44	28.9	139	30.2	4	25.0	6	19.4	40	29.4	133	31.1
KESSNER INDEX												
ADEQUATE	60	39.5	196	42.5	10	62.5	17	54.8	50	36.8	178	41.6
INTERMEDIATE	82	53.9	231	50.1	4	25.0	11	35.5	78	57.4	219	51.2
INADEQUATE	10	6.6	34	7.4	2	12.5	3	9.7	8	5.9	31	7.2
C-SECTION BIRTHS	12	7.5	28	5.9	2	12.5	5	16.1	10	6.9	22	5.0
PRE-TERM BIRTHS	18	11.2	63	13.2	0	0.0	0	0.0	18	12.5	63	14.2
LOW BIRTHWEIGHT	13	8.1	32	6.7	0	0.0	0	0.0	13	9.0	32	7.2

Note: Unknown responses are excluded from the denominator when calculating percentages.

TABLE 3 SELECTED BIRTH STATISTICS REPORTED BY MOTHER'S RACE AND NATIVE REGIONAL CORPORATION OF RESIDENCE: 2002 AND 2000-2002 SEALASKA CORPORATION

	TOTAL				WHITE				NATIVE			
	2002 NUMBER	2002 %	2000-2002 NUMBER	2000-2002 %	2002 NUMBER	2002 %	2000-2002 NUMBER	2000-2002 %	2002 NUMBER	2002 %	2000-2002 NUMBER	2000-2002 %
BIRTHS												
WITHIN AREA	812	100.0	2,552	100.0	532	65.5	1,687	66.1	219	27.0	671	26.3
TO RESIDENTS	880	100.0	2,751	100.0	582	66.1	1,809	65.8	230	26.1	720	26.2
FACILITY												
HOSPITAL	751	85.3	2,414	87.7	476	81.8	1,542	85.2	216	93.9	688	95.6
BIRTHING CENTER	57	6.5	153	5.6	49	8.4	125	6.9	6	2.6	18	2.5
HOME	32	3.6	75	2.7	28	4.8	67	3.7	3	1.3	4	0.6
CLINIC	0	0.0	4	0.1	0	0.0	1	0.1	0	0.0	3	0.4
OUTSIDE ALASKA	40	4.5	105	3.8	29	5.0	74	4.1	5	2.2	7	1.0
MOTHER CHARACTERISTICS												
AGE GROUP												
<15	1	0.1	1	0.0	0	0.0	0	0.0	1	0.4	1	0.1
15-19	81	9.2	288	10.4	43	7.4	142	7.9	34	14.8	128	17.8
15-17	15	1.7	67	2.4	6	1.0	27	1.5	8	3.5	33	4.6
18-19	66	7.5	221	8.0	37	6.4	115	6.4	26	11.3	95	13.2
20-24	233	26.5	679	24.7	141	24.3	392	21.7	77	33.5	238	33.1
25-29	248	28.2	750	27.3	168	29.0	510	28.2	61	26.5	178	24.7
30-34	189	21.5	604	22.0	140	24.1	451	25.0	30	13.0	93	12.9
35-39	98	11.2	336	12.2	70	12.1	249	13.8	22	9.6	66	9.2
40-44	28	3.2	87	3.2	18	3.1	59	3.3	5	2.2	16	2.2
45+	0	0.0	3	0.1	0	0.0	3	0.2	0	0.0	0	0.0
REPORTED DRINKING	11	1.3	68	2.6	5	0.9	39	2.3	5	2.3	26	3.7
REPORTED SMOKING	132	15.4	461	17.2	80	13.9	274	15.4	48	21.3	168	23.7
UNWED	309	35.5	966	35.4	159	27.5	473	26.3	141	61.3	445	61.8
EDUCATION												
<12 YEARS	95	11.5	320	12.5	47	8.5	140	8.2	46	21.2	160	23.4
12 YEARS	307	37.3	1,022	39.9	180	32.5	600	35.3	107	49.3	353	51.6
12+ YEARS	421	51.2	1,219	47.6	326	59.0	961	56.5	64	29.5	171	25.0
PRENATAL CARE												
TRIMESTER CARE BEGAN												
1ST TRIMESTER	690	85.0	2,147	84.9	485	88.2	1,493	87.8	161	78.5	503	78.2
3RD TRIMESTER	24	3.0	61	2.4	12	2.2	28	1.6	11	5.4	29	4.5
NO PRENATAL CARE	2	0.3	10	0.4	2	0.4	8	0.5	0	0.0	1	0.2
APNCU INDEX												
ADEQUATE+	279	38.3	761	32.9	202	40.8	540	34.5	59	33.0	175	30.3
ADEQUATE	288	39.6	936	40.4	199	40.2	669	42.7	65	36.3	198	34.3
INTERMEDIATE	72	9.9	354	15.3	47	9.5	214	13.7	21	11.7	105	18.2
INADEQUATE	89	12.2	263	11.4	47	9.5	142	9.1	34	19.0	99	17.2
KESSNER INDEX												
ADEQUATE	561	76.8	1,759	75.9	404	81.5	1,257	80.2	119	66.5	384	66.4
INTERMEDIATE	143	19.6	488	21.1	78	15.7	274	17.5	49	27.4	164	28.4
INADEQUATE	26	3.6	71	3.1	14	2.8	36	2.3	11	6.1	30	5.2
C-SECTION BIRTHS	232	26.4	664	24.1	160	27.5	455	25.2	52	22.6	147	20.4
PRE-TERM BIRTHS	80	9.1	237	8.6	41	7.0	122	6.7	29	12.6	89	12.4
LOW BIRTHWEIGHT	41	4.7	113	4.1	28	4.8	75	4.1	10	4.3	27	3.8

Note: Unknown responses are excluded from the denominator when calculating percentages.