

# CHILD AND ADOLESCENT DEATHS



*"Kittiwakes, St. George"*  
Copyright Rie Munoz, Ltd.

## INTRODUCTION

This chapter provides information on deaths to children and adolescents from 0 to 19 years of age. Deaths and death rates are reported by the following age groups: less than 1 year, 1 to 4 years, 5 to 9 years, 10 to 14 years, 15 to 19 years, and the total number of child and adolescent deaths. Note that for infants less than 1 year of age, infant

death rates are reported only at the statewide level. The infant death rates reported in this chapter are different than the infant mortality rates reported in Chapter 2. Infant mortality rates are based on the number of live births, while infant death rates are based on the estimated population under 1 year of age.

Statewide child and adolescent deaths and death rates are reported by age group and the sex and race of the child or adolescent. However, due to the low number of reportable events for most areas, child and adolescent deaths by census area, borough, and Native Regional Corporation are only reported by age group. Also, since population estimates for infants less than one year of age are only available at the statewide level, the death rates for this age group are not reported by census area (borough). Infant mortality rates by census area (borough) are available in Chapter 2. Since population estimates are not available by Native Regional Corporation and age group, rates are not reported in Table 13.

The death rate for Alaskan adolescents age 15 to 19 (Figure 11) is 11.4 percent lower than in 1995.

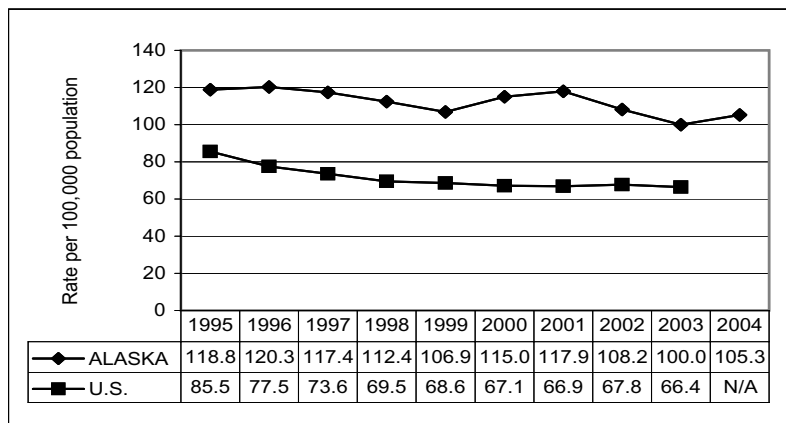
The remaining tables in this chapter show the annual occurrences of adolescent deaths to Alaskan residents during 2004 and for the three-year period 2002 through 2004. Selected causes of death by age group are shown in Table 14 (pages 73-74). The causes of death are based on the 113 selected causes of death tabulation list in ICD-10. From 1979 to 1998, causes of death were classified using ICD-9. Publications or tables showing mortality data under ICD-10 may differ substantially from those under ICD-9. Cause-of-death data across ICD revisions are not directly comparable, unless adjustments are made for the coding and classification changes. For further discussion on the implications of changing ICD revisions, please refer to Appendix C.

**TABLE 10 AGE-SPECIFIC ADOLESCENT DEATH RATES: ALASKA AND THE U.S.\*, 1995–2004**

	1995	1996	1997	1998	1999	2000	2001	2002	2003	2004
<b>ALASKA</b>										
1–4	55.3	52.0	56.0	48.3	45.7	43.5	49.3	45.1	41.7	42.5
5–9	23.6	21.7	25.2	23.4	23.6	19.2	17.3	15.1	16.6	14.3
10–14	37.8	28.4	33.6	32.0	27.8	27.0	27.8	36.7	41.7	44.1
15–19	118.8	120.3	117.4	112.4	106.9	115.0	117.9	108.2	100.0	105.3
1–19	54.8	51.8	54.8	51.6	49.0	49.6	51.7	50.9	50.4	52.3
<b>U.S.</b>										
1–4	40.4	38.0	35.5	34.1	34.2	32.4	33.3	31.2	31.5	N/A
5–9	19.4	19.0	18.0	17.2	16.9	15.8	15.3	15.2	14.7	N/A
10–14	24.8	23.4	22.5	21.5	20.4	20.3	19.2	19.5	19.1	N/A
15–19	85.5	77.5	73.6	69.5	68.6	67.1	66.9	67.8	66.4	N/A
1–19	42.5	39.2	37.2	35.5	34.9	33.9	33.6	33.5	N/A	N/A

Note: Alaska rates are three-year moving averages. Rates are per 100,000 population.

**FIGURE 11 DEATH RATES FOR ADOLESCENTS AGE 15–19: ALASKA AND THE U.S.\*, 1995–2004**



Note: Alaska rates are three-year moving averages. U.S. rates are single year rates.

\*U.S. rates provided by the United States Department of Health and Human Services (US DHHS), Centers for Disease Control and Prevention (CDC), National Center for Health Statistics (NCHS), Office of Analysis, Epidemiology, (OAE): Compressed Mortality File (CMF) compiled from CMF 1968–1988, Series 20, No. 2A 2000, CMF 1989–1998, Series 20, No. 2E 2003 and CMF 1999–2002, Series 20, No. 2H 2004 on CDC WONDER On-line Database; "Deaths: Final Data for 2003", National Vital Statistics Report, Vol. 54, No. 13, April 19, 2006, p. 24.

**TABLE 11 CHILD AND ADOLESCENT DEATHS BY RACE AND SEX:  
ALASKA, 2004 AND 2002-2004**

RACE /SEX	AGE GROUP											
	<1				1-4				5-9			
	2004 DEATHS	2004 RATE <sup>1</sup>	02-04 DEATHS	02-04 RATE <sup>1</sup>	2004 DEATHS	2004 RATE <sup>1</sup>	02-04 DEATHS	02-04 RATE <sup>1</sup>	2004 DEATHS	2004 RATE <sup>1</sup>	02-04 DEATHS	02-04 RATE <sup>1</sup>
TOTAL DEATHS	69	662.1	194	631.3	23	54.6	53	42.5	5	9.8 *	22	14.3
BY RACE												
ASIAN/PI	0	0.0	13	502.7	3	94.0 *	3	33.3 *	0	0.0	1	9.4 *
BLACK	8	1309.3 *	15	763.0	1	36.5 *	2	23.0 *	1	30.1 *	3	29.2 *
NATIVE	29	1099.7	69	917.6	7	71.5 *	27	94.1	3	26.8 *	9	26.3 *
WHITE	32	505.1	97	519.9	12	45.5	21	26.9	1	3.0 *	9	9.1 *
BY SEX												
FEMALE	28	549.2	87	581.2	11	54.2	23	38.2	1	4.0 *	8	10.6 *
MALE	41	770.2	107	678.9	12	55.0	30	46.6	4	15.4 *	14	17.8

RACE /SEX	AGE GROUP											
	10-14				15-19				0-19			
	2004 DEATHS	2004 RATE <sup>1</sup>	02-04 DEATHS	02-04 RATE <sup>1</sup>	2004 DEATHS	2004 RATE <sup>1</sup>	02-04 DEATHS	02-04 RATE <sup>1</sup>	2004 DEATHS	2004 RATE <sup>1</sup>	02-04 DEATHS	02-04 RATE <sup>1</sup>
TOTAL DEATHS	24	42.3	76	44.1	64	118.4	169	105.3	185	86.4	514	80.0
BY RACE												
ASIAN/PI	2	54.1 *	5	45.4 *	1	27.8 *	5	46.9 *	6	40.4 *	27	61.5
BLACK	0	0.0	1	9.9 *	5	181.4 *	6	70.4 *	15	119.5	27	68.2
NATIVE	8	63.6 *	25	64.5	27	226.8	77	218.9	74	153.9	207	143.4
WHITE	14	37.5	45	40.1	30	83.8	80	75.4	89	64.2	252	60.8
BY SEX												
FEMALE	9	32.4 *	29	34.5	14	53.5	47	60.5	63	60.5	194	62.1
MALE	15	51.8	47	53.4	50	179.3	122	147.4	122	110.9	320	97.1

<sup>1</sup> Rates are per 100,000 total, race-specific, or sex-specific populations ages 0-19, respectively.

\* Rates based on fewer than 10 occurrences are statistically unreliable and should be used with caution.

**TABLE 12 CHILD AND ADOLESCENT DEATHS BY CENSUS AREA OR BOROUGH OF RESIDENCE AND AGE GROUP: ALASKA, 2004 AND 2002–2004**

CENSUS AREA/BOROUGH	0–4				5–9				10–14			
	2004 DEATHS	2004 RATE <sup>1</sup>	02–04 DEATHS	02–04 RATE <sup>1</sup>	2004 DEATHS	2004 RATE <sup>1</sup>	02–04 DEATHS	02–04 RATE <sup>1</sup>	2004 DEATHS	2004 RATE <sup>1</sup>	02–04 DEATHS	02–04 RATE <sup>1</sup>
ALEUTIANS EAST BOROUGH	0	0.0	0	0.0	0	0.0	0	0.0	0	0.0	0	0.0
ALEUTIANS WEST CENSUS AREA	0	0.0	1	144.1*	0	0.0	0	0.0	0	0.0	0	0.0
MUNICIPALITY OF ANCHORAGE	31	135.5	75	112.0	0	0.0	4	6.1*	10	43.1	31	44.7
BETHEL CENSUS AREA	7	335.1*	23	366.9	1	53.0*	3	52.9*	1	52.0*	5	87.7*
BRISTOL BAY BOROUGH	0	0.0	0	0.0	0	0.0	0	0.0	0	0.0	0	0.0
DENALI BOROUGH	0	0.0	1	316.5*	0	0.0	1	330.0*	2	1612.9*	2	522.2*
DILLINGHAM CENSUS AREA	0	0.0	2	139.1*	0	0.0	0	0.0	0	0.0	0	0.0
FAIRBANKS NORTH STAR BOROUGH	15	203.1	39	181.1	2	30.0*	6	29.7*	2	28.7*	6	27.9*
HAINES BOROUGH	0	0.0	0	0.0	0	0.0	0	0.0	0	0.0	0	0.0
JUNEAU BOROUGH	3	150.2*	13	213.2	0	0.0	0	0.0	1	40.2*	3	39.8*
KENAI PENINSULA BOROUGH	3	93.3*	15	153.5	0	0.0	1	9.3*	1	23.1*	5	37.6*
KETCHIKAN GATEWAY BOROUGH	4	460.3*	7	262.4*	0	0.0	0	0.0	0	0.0	0	0.0
KODIAK ISLAND BOROUGH	1	91.4*	4	115.4*	0	0.0	0	0.0	0	0.0	0	0.0
LAKE AND PENINSULA BOROUGH	0	0.0	0	0.0	0	0.0	0	0.0	0	0.0	0	0.0
MATANUSKA-SUSITNA BOROUGH	5	99.0*	18	126.2	0	0.0	2	12.5*	2	31.3*	7	36.7*
NOME CENSUS AREA	6	573.6*	15	475.6	0	0.0	1	35.9*	1	91.7*	1	29.9*
NORTH SLOPE BOROUGH	2	248.1*	6	260.3*	1	159.2*	1	51.2*	0	0.0	0	0.0
NORTHWEST ARCTIC BOROUGH	4	493.8*	9	362.0*	0	0.0	0	0.0	0	0.0	3	105.8*
PRINCE OF WALES-OUTER KETCHIKAN CENSUS AREA	1	289.0*	2	182.0*	0	0.0	0	0.0	0	0.0	0	0.0
SITKA BOROUGH	0	0.0	1	53.0*	0	0.0	1	55.2*	1	154.3*	1	49.7*
SKAGWAY-HOONAH-ANGOON CENSUS AREA	0	0.0	0	0.0	0	0.0	0	0.0	0	0.0	0	0.0
SOUTHEAST FAIRBANKS CENSUS AREA	0	0.0	1	74.9*	0	0.0	0	0.0	1	166.4*	1	56.5*
VALDEZ-CORDOVA CENSUS AREA	1	162.6*	1	50.3*	0	0.0	0	0.0	0	0.0	1	39.0*
WADE HAMPTON CENSUS AREA	4	388.7*	7	226.5*	1	105.5*	1	34.2*	2	200.4*	5	164.9*
WRANGELL-PETERSBURG CENSUS AREA	0	0.0	0	0.0	0	0.0	0	0.0	0	0.0	2	127.4*
YAKUTAT BOROUGH	0	0.0	0	0.0	0	0.0	1	714.3*	0	0.0	0	0.0
YUKON-KOYUKUK CENSUS AREA	4	809.7*	5	328.1*	0	0.0	0	0.0	0	0.0	3	155.9*
ALASKA	92	175.1	247	159.0	5	9.8*	22	14.3	24	42.3	76	44.1

Continued ⇒

<sup>1</sup> Rates are per 100,000 population ages 0–19.

\* Rates based on fewer than 10 occurrences are statistically unreliable and should be used with caution.

Note: Population estimates are not available for infants less than one year of age by census area, so deaths and death rates for this age group are not reported separately.

**TABLE 12 CHILD AND ADOLESCENT DEATHS BY CENSUS AREA OR BOROUGH OF RESIDENCE AND AGE GROUP: ALASKA, 2004 AND 2002–2004** (Continued)

CENSUS AREA/BOROUGH	15–19				0–19			
	2004 DEATHS	2004 RATE <sup>1</sup>	02–04 DEATHS	02–04 RATE <sup>1</sup>	2004 DEATHS	2004 RATE <sup>1</sup>	02–04 DEATHS	02–04 RATE <sup>1</sup>
ALEUTIANS EAST BOROUGH	0	0.0	0	0.0	0	0.0	0	0.0
ALEUTIANS WEST CENSUS AREA	0	0.0	1	149.5*	0	0.0	2	73.2*
MUNICIPALITY OF ANCHORAGE	23	106.2	50	78.7	64	71.6	160	60.4
BETHEL CENSUS AREA	6	378.3*	18	381.9	15	200.4	49	219.2
BRISTOL BAY BOROUGH	0	0.0	0	0.0	0	0.0	0	0.0
DENALI BOROUGH	0	0.0	0	0.0	2	434.8*	4	283.9*
DILLINGHAM CENSUS AREA	1	215.5*	4	299.4*	1	51.3*	6	100.6*
FAIRBANKS NORTH STAR BOROUGH	3	43.7*	17	83.8	22	78.9	68	81.4
HAINES BOROUGH	0	0.0	0	0.0	0	0.0	0	0.0
JUNEAU BOROUGH	1	41.2*	4	55.1*	5	56.1*	20	73.7
KENAI PENINSULA BOROUGH	2	45.8*	7	51.9*	6	39.1*	28	59.1
KETCHIKAN GATEWAY BOROUGH	2	198.4*	6	189.9*	6	158.3*	13	109.3
KODIAK ISLAND BOROUGH	3	271.0*	3	91.2*	4	85.5*	7	48.2*
LAKE AND PENINSULA BOROUGH	0	0.0	0	0.0	0	0.0	0	0.0
MATANUSKA-SUSITNA BOROUGH	5	78.8*	11	59.0	12	51.7	38	55.9
NOME CENSUS AREA	4	429.2*	10	375.8	11	276.1	27	225.9
NORTH SLOPE BOROUGH	2	278.9*	4	180.6*	5	169.9*	11	122.1
NORTHWEST ARCTIC BOROUGH	1	120.8*	8	334.9*	5	151.1*	20	199.1
PRINCE OF WALES-OUTER KETCHIKAN CENSUS AREA	0	0.0	2	135.2*	1	59.5*	4	76.2*
SITKA BOROUGH	0	0.0	0	0.0	1	40.2*	3	39.0*
SKAGWAY-HOONAH-ANGOON CENSUS AREA	1	446.4*	2	281.7*	1	131.1*	2	83.3*
SOUTHEAST FAIRBANKS CENSUS AREA	1	185.2*	2	125.9*	2	95.8*	4	65.2*
VALDEZ-CORDOVA CENSUS AREA	0	0.0	2	74.7*	1	32.8*	4	42.6*
WADE HAMPTON CENSUS AREA	7	826.4*	13	530.2	14	366.3	26	226.1
WRANGELL-PETERSBURG CENSUS AREA	0	0.0	1	60.5*	0	0.0	3	52.9*
YAKUTAT BOROUGH	0	0.0	0	0.0	0	0.0	1	151.7*
YUKON-KOYUKUK CENSUS AREA	1	154.6*	3	158.8*	5	227.1*	11	163.8
ALASKA	64	118.4	169	105.3	185	86.4	514	80.0

<sup>1</sup> Rates are per 100,000 population ages 0–19.

\* Rates based on fewer than 10 occurrences are statistically unreliable and should be used with caution.

Note: Population estimates are not available for infants less than one year of age by census area, so deaths and death rates for this age group are not reported separately.

**TABLE 13 CHILD AND ADOLESCENT DEATHS BY NATIVE REGIONAL CORPORATION AND AGE GROUP: ALASKA, 2004 AND 2002–2004**

NATIVE REGIONAL CORPORATION	0–4		5–9		10–14		15–19		0–19	
	2004 DEATHS	02–04 DEATHS	2004 DEATHS	02–04 DEATHS	2004 DEATHS	02–04 DEATHS	2004 DEATHS	02–04 DEATHS	2004 DEATHS	02–04 DEATHS
AHTNA CORPORATION	0	0	0	0	1	1	0	2	1	3
ALEUT CORPORATION	0	1	0	0	0	0	0	1	0	2
ARCTIC SLOPE REGIONAL CORPORATION	2	6	1	1	0	0	2	4	5	11
BERING STRAITS NATIVE CORPORATION	6	15	0	1	1	1	4	10	11	27
BRISTOL BAY NATIVE CORPORATION	0	2	0	0	0	0	1	4	1	6
CALISTA CORPORATION	11	30	2	4	3	10	13	31	29	75
CHUGACH ALASKA CORPORATION	1	1	0	0	0	1	0	0	1	2
COOK INLET REGION INCORPORATED	39	108	0	7	13	43	30	68	82	226
DOYON LIMITED	19	46	2	7	4	11	5	22	30	86
KONIAG INCORPORATED	1	4	0	0	0	0	3	3	4	7
NANA REGIONAL CORPORATION	4	9	0	0	0	3	1	8	5	20
SEALASKA CORPORATION	8	23	0	2	2	6	4	15	14	46
ALASKA	92	247	5	22	24	76	64	169	185	514

Note: Rates are not calculated since population estimates by Native Regional Corporation and age group are not available.

TABLE 14 CHILD AND ADOLESCENT DEATHS BY SELECTED CAUSES OF DEATH AND AGE GROUP: ALASKA, 2004 AND 2002-2004

CAUSE OF DEATH (ICD-10 CODES)	<1			1-4			5-9			
	2004	02-04	02-04	2004	02-04	02-04	2004	02-04	02-04	
	DEATHS	RATE <sup>1</sup>	DEATHS	DEATHS	RATE <sup>1</sup>	DEATHS	DEATHS	RATE <sup>1</sup>	DEATHS	
NATURAL CAUSES (A00-R99)	4	38.4*	8	26.0*	2	4.7*	6	4.8*	0	0.0
INFECTIOUS AND PARASITIC DISEASES (A00-B99)	0	0.0	0	0.0	2	4.7*	2	1.6*	0	0.0
MALIGNANT NEOPLASMS (C00-C97)	0	0.0	3	9.8*	0	0.0	1	0.8*	0	0.0
HEART DISEASE (I00-I09,I11,I13,I20-I51)	0	0.0	0	0.0	0	0.0	1	0.8*	0	0.0
CEREBROVASCULAR DISEASE (I60-I69)	0	0.0	0	0.0	0	0.0	1	0.8*	0	0.0
PNEUMONIA (J12-J18)	0	0.0	7	22.8*	0	0.0	0	0.0	0	0.0
CHRONIC LOWER RESPIRATORY DISEASE (J40-J47)	0	0.0	0	0.0	0	0.0	0	0.0	0	0.0
OTHER RESPIRATORY DISEASES (J00-J06,J30-J39,J67,J70-J98)	1	9.6*	3	9.8*	0	0.0	0	0.0	0	0.0
PERINATAL CONDITIONS (P00-P96)	22	211.1	52	169.2	0	0.0	0	0.0	0	0.0
CONGENITAL MALFORMATIONS (Q00-Q99)	14	134.3	43	139.9	2	4.7*	2	1.6*	1	2.0*
SIDS (R95)	11	105.6	33	107.4	1	2.4*	1	0.8*	0	0.0
ALL OTHER NATURAL CAUSES <sup>2</sup>	4	38.4*	17	55.3	6	14.2*	13	10.4	0	0.0
TOTAL NATURAL CAUSES	56	537.4	166	540.2	13	30.9	26	20.9	1	2.0*
UNINTENTIONAL INJURY (V01-X69,Y85-Y86)	0	0.0	0	0.0	3	7.1*	8	6.4*	1	2.0*
MOTOR VEHICLE <sup>3</sup>	0	0.0	1	3.3*	0	0.0	0	0.0	0	0.0
WATER TRANSPORT (V90-V94)	0	0.0	0	0.0	0	0.0	0	0.0	0	0.0
AIR TRANSPORT (V95-V97)	0	0.0	0	0.0	0	0.0	0	0.0	0	0.0
OTHER TRANSPORT ACCIDENTS <sup>4</sup>	0	0.0	0	0.0	1	2.4*	1	0.8*	0	0.0
FALLS (W00-W19)	1	9.6*	1	3.3*	0	0.0	0	0.0	0	0.0
ACCIDENTAL DISCHARGE OF FIREARMS (W32-W34)	0	0.0	0	0.0	0	0.0	0	0.0	0	0.0
DROWNING (W65-W74)	0	0.0	0	0.0	1	2.4*	5	4.0*	1	2.0*
EXPOSURE TO SMOKE, FIRE, AND FLAMES (X00-X09)	0	0.0	0	0.0	0	0.0	2	1.6*	0	0.0
POISONING (X40-X49)	0	0.0	0	0.0	0	0.0	1	0.8*	0	0.0
ALL OTHER UNINTENTIONAL INJURIES (W20-W31,W35-W64,W75-W99,X10-X39,X50-X59,Y86)	8	76.8*	17	55.3	1	2.4*	5	4.0*	0	0.0
TOTAL UNINTENTIONAL INJURY	9	86.4*	19	61.8	6	14.2*	22	17.7	2	3.9*
INTENTIONAL INJURIES (U01-U03,X60-Y09,Y87.0-Y87.1)	0	0.0	0	0.0	0	0.0	0	0.0	0	0.0
INTENTIONAL SELF-HARM (SUICIDE) (U03,X60-X84,Y87.0)	0	0.0	0	0.0	0	0.0	0	0.0	0	0.0
SUICIDE BY DISCHARGE OF FIREARMS (X72-X74)	0	0.0	0	0.0	0	0.0	0	0.0	0	0.0
SUICIDE BY OTHER AND UNSPECIFIED MEANS (U03,X60-X71,X75-X84,Y87.0)	0	0.0	0	0.0	0	0.0	0	0.0	0	0.0
TOTAL INTENTIONAL SELF-HARM (SUICIDE)	0	0.0	0	0.0	0	0.0	0	0.0	0	0.0
ASSAULT (U01-U02,X85-Y09,Y87.1)	0	0.0	0	0.0	0	0.0	0	0.0	0	0.0
ASSAULT BY DISCHARGE OF FIREARMS (U01.4,X93-X95)	2	19.2*	5	16.3*	3	7.1*	3	2.4*	0	0.0
ASSAULT BY OTHER AND UNSPECIFIED MEANS (U01.0-U01.3,U01.5-U01.9,U02,X85-X93,X96-Y09,Y87.1)	2	19.2*	5	16.3*	3	7.1*	3	2.4*	0	0.0
TOTAL ASSAULT	2	19.2*	5	16.3*	3	7.1*	3	2.4*	0	0.0
TOTAL INTENTIONAL INJURIES	0	0.0	0	0.0	0	0.0	0	0.0	0	0.0
LEGAL INTERVENTION (Y35,Y89.0)	0	0.0	0	0.0	0	0.0	0	0.0	0	0.0
UNDETERMINED INTENT (Y10-Y34,Y87.2,Y89.9)	0	0.0	0	0.0	0	0.0	0	0.0	0	0.0
DISCHARGE OF FIREARMS, UNKNOWN INTENT (Y22-Y24)	0	0.0	1	3.3*	0	0.0	1	0.8*	1	2.0*
OTHER UNDETERMINED INTENT (Y10-Y21,Y25-Y34,Y87.2)	0	0.0	1	3.3*	0	0.0	1	0.8*	1	2.0*
TOTAL UNDETERMINED INTENT	0	0.0	0	0.0	0	0.0	0	0.0	0	0.0
COMPLICATIONS OF MEDICAL CARE (Y40-Y84,Y88)	69	662.1	194	631.3	23	54.6	53	42.5	5	9.8*
TOTAL DEATHS	69	662.1	194	631.3	23	54.6	53	42.5	5	9.8*

Continued →

<sup>1</sup> Rates are per 100,000 population ages 0-19.

<sup>2</sup> R00-R94, R96-R99, D65-E07, E15-E34, E65-F99, G04-G12, G23-G25, G31-H93, K00-K22, K29-K31, K50-K66, K71-K72, K75-K76, K83-M89, N13.0-N13.5, N13.7-N13.9, N14, N15.0, N15.8-N15.9, N20-N23, N28-N39, N41-N64, N80-N98

<sup>3</sup> V02-V04, V09, V12-V14, V19, V21, V19.2, V19.4, V19.6, V20-V79, V80, 3-V80.5, V81.0-V81.1, V82.0-V82.1, V83-V86, V87.0-V87.8, V88.0-V88.8, V89.0, V89.2

<sup>4</sup> V01, V05-V06, V09, 1, V09.3-V09.9, V10-V11, V15-V18, V19.3, V19.8-V19.9, V80.0-V80.2, V80.6-V80.9, V81.2-V81.9, V82.2-V82.9, V87.9, V88.9, V89.1, V89.3, V89.9, V98-V99, Y85

\* Rates based on fewer than 10 occurrences are statistically unreliable and should be used with caution.

TABLE 14 CHILD AND ADOLESCENT DEATHS BY SELECTED CAUSES OF DEATH AND AGE GROUP: ALASKA, 2004 AND 2002-2004 (Continued)

CAUSE OF DEATH (ICD-10 CODES)	10-14			15-19			0-19																																																																																																																																																																																																																																																																																																																																																																																																																																																																																	
	2004	02-04	02-04	2004	02-04	02-04	2004	02-04	02-04																																																																																																																																																																																																																																																																																																																																																																																																																																																																															
	DEATHS	RATE <sup>1</sup>	DEATHS	RATE <sup>1</sup>	DEATHS	RATE <sup>1</sup>	DEATHS	RATE <sup>1</sup>	DEATHS	RATE <sup>1</sup>																																																																																																																																																																																																																																																																																																																																																																																																																																																																														
NATURAL CAUSES (A00-R99)											INFECTIOUS AND PARASITIC DISEASES (A00-B99)	1	1.8*	2	1.2*	0	0.0	1	0.6*	7	3.3*	MALIGNANT NEOPLASMS (C00-C97)	1	1.8*	5	2.9*	1	1.8*	3	1.9*	4	1.9*	HEART DISEASE (I00-I09,I11,I13,I20-I51)	0	0.0	2	1.2*	0	0.0	4	2.5*	0	0.0	CEREBROVASCULAR DISEASE (I60-I69)	0	0.0	0	0.0	0	0.0	0	0.0	0	0.0	PNEUMONIA (J12-J18)	0	0.0	1	0.6*	0	0.0	2	1.2*	0	0.0	CHRONIC LOWER RESPIRATORY DISEASE (J40-J47)	0	0.0	1	0.6*	1	1.8*	1	0.6*	1	0.5*	OTHER RESPIRATORY DISEASES (J00-J06,J30-J39,J67,J70-J98)	0	0.0	1	0.6*	0	0.0	0	0.0	1	0.5*	PERINATAL CONDITIONS (P00-P96)	0	0.0	0	0.0	0	0.0	0	0.0	22	10.3	CONGENITAL MALFORMATIONS (Q00-Q99)	1	1.8*	3	1.7*	1	1.8*	3	1.9*	19	8.9	SIDS (R95)	0	0.0	0	0.0	0	0.0	0	0.0	12	5.6	ALL OTHER NATURAL CAUSES <sup>2</sup>	2	3.5*	8	4.6*	8	14.8*	15	9.4	20	9.3	TOTAL NATURAL CAUSES	5	8.8*	23	13.4	11	20.3	29	18.1	86	40.1	UNINTENTIONAL INJURY (V01-X69,Y85-Y86)											MOTOR VEHICLE <sup>3</sup>	4	7.0*	16	9.3	11	20.3	34	21.2	19	8.9	WATER TRANSPORT (V90-V94)	1	1.8*	1	0.6*	0	0.0	2	1.2*	1	0.5*	AIR TRANSPORT (V95-V97)	0	0.0	0	0.0	0	0.0	0	0.0	0	0.0	OTHER TRANSPORT ACCIDENTS <sup>4</sup>	0	0.0	1	0.6*	0	0.0	1	0.6*	1	0.5*	FALLS (W00-W19)	0	0.0	1	0.6*	0	0.0	1	0.6*	1	0.5*	ACCIDENTAL DISCHARGE OF FIREARMS (W32-W34)	0	0.0	1	0.6*	0	0.0	2	1.2*	0	0.0	DROWNING (W65-W74)	4	7.0*	8	4.6*	4	7.4*	6	3.7*	10	4.7	EXPOSURE TO SMOKE, FIRE, AND FLAMES (X00-X09)	0	0.0	0	0.0	1	1.8*	1	0.6*	1	0.5*	POISONING (X40-X49)	1	1.8*	3	1.7*	3	5.5*	8	5.0*	4	1.9*	ALL OTHER UNINTENTIONAL INJURIES (W20-W31,W35-W64,W75-W99,X10-X39,X50-X59,Y86)	0	0.0	2	1.2*	1	1.8*	4	2.5*	10	4.7	TOTAL UNINTENTIONAL INJURY	10	17.6	33	19.2	20	37.0	59	36.8	47	21.9	INTENTIONAL INJURIES (U01-U03,X60-Y09,Y87.0-Y87.1)											INTENTIONAL SELF-HARM (SUICIDE) (U03,X60-X84,Y87.0)											SUICIDE BY DISCHARGE OF FIREARMS (X72-X74)	1	1.8*	2	1.2*	14	25.9	36	22.4	15	7.0	SUICIDE BY OTHER AND UNSPECIFIED MEANS (U03,X60-X71,X75-X84,Y87.0)	4	7.0*	6	3.5*	8	14.8*	19	11.8	13	6.1	TOTAL INTENTIONAL SELF-HARM (SUICIDE)	5	8.8*	8	4.6*	22	40.7	55	34.3	28	13.1	ASSAULT (U01-U02,X85-Y09,Y87.1)											ASSAULT BY DISCHARGE OF FIREARMS (U01.4,X93-X96)	1	1.8*	7	4.1*	6	11.1*	18	11.2	7	3.3*	ASSAULT BY OTHER AND UNSPECIFIED MEANS (U01.0-U01.3,U01.5-U01.9,U02,X85-X93,X96-Y09,Y87.1)	2	3.5*	3	1.7*	1	1.8*	2	1.2*	8	3.7*	TOTAL ASSAULT	3	5.3*	10	5.8	7	12.9*	20	12.5	15	7.0	TOTAL INTENTIONAL INJURIES	8	14.1*	18	10.5	29	53.6	75	46.8	43	20.1	LEGAL INTERVENTION (Y35,Y89.0)	0	0.0	0	0.0	0	0.0	0	0.0	0	0.0	UNDETERMINED INTENT (Y10-Y34,Y87.2,Y89.9)											DISCHARGE OF FIREARMS, UNKNOWN INTENT (Y22-Y24)	0	0.0	1	0.6*	0	0.0	0	0.0	0	0.0	OTHER UNDETERMINED INTENT (Y10-Y21,Y25-Y34,Y87.2)	1	1.8*	2	1.2*	1	1.8*	3	1.9*	3	1.4*	TOTAL UNDETERMINED INTENT	0	0.0	0	0.0	1	1.8*	2	1.2*	1	0.5*	COMPLICATIONS OF MEDICAL CARE (Y40-Y84,Y88)											TOTAL DEATHS	24	42.3	76	44.1	64	118.4	169	105.3	185	86.4										514	80.0
INFECTIOUS AND PARASITIC DISEASES (A00-B99)	1	1.8*	2	1.2*	0	0.0	1	0.6*	7	3.3*	MALIGNANT NEOPLASMS (C00-C97)	1	1.8*	5	2.9*	1	1.8*	3	1.9*	4	1.9*	HEART DISEASE (I00-I09,I11,I13,I20-I51)	0	0.0	2	1.2*	0	0.0	4	2.5*	0	0.0	CEREBROVASCULAR DISEASE (I60-I69)	0	0.0	0	0.0	0	0.0	0	0.0	0	0.0	PNEUMONIA (J12-J18)	0	0.0	1	0.6*	0	0.0	2	1.2*	0	0.0	CHRONIC LOWER RESPIRATORY DISEASE (J40-J47)	0	0.0	1	0.6*	1	1.8*	1	0.6*	1	0.5*	OTHER RESPIRATORY DISEASES (J00-J06,J30-J39,J67,J70-J98)	0	0.0	1	0.6*	0	0.0	0	0.0	1	0.5*	PERINATAL CONDITIONS (P00-P96)	0	0.0	0	0.0	0	0.0	0	0.0	22	10.3	CONGENITAL MALFORMATIONS (Q00-Q99)	1	1.8*	3	1.7*	1	1.8*	3	1.9*	19	8.9	SIDS (R95)	0	0.0	0	0.0	0	0.0	0	0.0	12	5.6	ALL OTHER NATURAL CAUSES <sup>2</sup>	2	3.5*	8	4.6*	8	14.8*	15	9.4	20	9.3	TOTAL NATURAL CAUSES	5	8.8*	23	13.4	11	20.3	29	18.1	86	40.1	UNINTENTIONAL INJURY (V01-X69,Y85-Y86)											MOTOR VEHICLE <sup>3</sup>	4	7.0*	16	9.3	11	20.3	34	21.2	19	8.9	WATER TRANSPORT (V90-V94)	1	1.8*	1	0.6*	0	0.0	2	1.2*	1	0.5*	AIR TRANSPORT (V95-V97)	0	0.0	0	0.0	0	0.0	0	0.0	0	0.0	OTHER TRANSPORT ACCIDENTS <sup>4</sup>	0	0.0	1	0.6*	0	0.0	1	0.6*	1	0.5*	FALLS (W00-W19)	0	0.0	1	0.6*	0	0.0	1	0.6*	1	0.5*	ACCIDENTAL DISCHARGE OF FIREARMS (W32-W34)	0	0.0	1	0.6*	0	0.0	2	1.2*	0	0.0	DROWNING (W65-W74)	4	7.0*	8	4.6*	4	7.4*	6	3.7*	10	4.7	EXPOSURE TO SMOKE, FIRE, AND FLAMES (X00-X09)	0	0.0	0	0.0	1	1.8*	1	0.6*	1	0.5*	POISONING (X40-X49)	1	1.8*	3	1.7*	3	5.5*	8	5.0*	4	1.9*	ALL OTHER UNINTENTIONAL INJURIES (W20-W31,W35-W64,W75-W99,X10-X39,X50-X59,Y86)	0	0.0	2	1.2*	1	1.8*	4	2.5*	10	4.7	TOTAL UNINTENTIONAL INJURY	10	17.6	33	19.2	20	37.0	59	36.8	47	21.9	INTENTIONAL INJURIES (U01-U03,X60-Y09,Y87.0-Y87.1)											INTENTIONAL SELF-HARM (SUICIDE) (U03,X60-X84,Y87.0)											SUICIDE BY DISCHARGE OF FIREARMS (X72-X74)	1	1.8*	2	1.2*	14	25.9	36	22.4	15	7.0	SUICIDE BY OTHER AND UNSPECIFIED MEANS (U03,X60-X71,X75-X84,Y87.0)	4	7.0*	6	3.5*	8	14.8*	19	11.8	13	6.1	TOTAL INTENTIONAL SELF-HARM (SUICIDE)	5	8.8*	8	4.6*	22	40.7	55	34.3	28	13.1	ASSAULT (U01-U02,X85-Y09,Y87.1)											ASSAULT BY DISCHARGE OF FIREARMS (U01.4,X93-X96)	1	1.8*	7	4.1*	6	11.1*	18	11.2	7	3.3*	ASSAULT BY OTHER AND UNSPECIFIED MEANS (U01.0-U01.3,U01.5-U01.9,U02,X85-X93,X96-Y09,Y87.1)	2	3.5*	3	1.7*	1	1.8*	2	1.2*	8	3.7*	TOTAL ASSAULT	3	5.3*	10	5.8	7	12.9*	20	12.5	15	7.0	TOTAL INTENTIONAL INJURIES	8	14.1*	18	10.5	29	53.6	75	46.8	43	20.1	LEGAL INTERVENTION (Y35,Y89.0)	0	0.0	0	0.0	0	0.0	0	0.0	0	0.0	UNDETERMINED INTENT (Y10-Y34,Y87.2,Y89.9)											DISCHARGE OF FIREARMS, UNKNOWN INTENT (Y22-Y24)	0	0.0	1	0.6*	0	0.0	0	0.0	0	0.0	OTHER UNDETERMINED INTENT (Y10-Y21,Y25-Y34,Y87.2)	1	1.8*	2	1.2*	1	1.8*	3	1.9*	3	1.4*	TOTAL UNDETERMINED INTENT	0	0.0	0	0.0	1	1.8*	2	1.2*	1	0.5*	COMPLICATIONS OF MEDICAL CARE (Y40-Y84,Y88)											TOTAL DEATHS	24	42.3	76	44.1	64	118.4	169	105.3	185	86.4										514	80.0											
MALIGNANT NEOPLASMS (C00-C97)	1	1.8*	5	2.9*	1	1.8*	3	1.9*	4	1.9*	HEART DISEASE (I00-I09,I11,I13,I20-I51)	0	0.0	2	1.2*	0	0.0	4	2.5*	0	0.0	CEREBROVASCULAR DISEASE (I60-I69)	0	0.0	0	0.0	0	0.0	0	0.0	0	0.0	PNEUMONIA (J12-J18)	0	0.0	1	0.6*	0	0.0	2	1.2*	0	0.0	CHRONIC LOWER RESPIRATORY DISEASE (J40-J47)	0	0.0	1	0.6*	1	1.8*	1	0.6*	1	0.5*	OTHER RESPIRATORY DISEASES (J00-J06,J30-J39,J67,J70-J98)	0	0.0	1	0.6*	0	0.0	0	0.0	1	0.5*	PERINATAL CONDITIONS (P00-P96)	0	0.0	0	0.0	0	0.0	0	0.0	22	10.3	CONGENITAL MALFORMATIONS (Q00-Q99)	1	1.8*	3	1.7*	1	1.8*	3	1.9*	19	8.9	SIDS (R95)	0	0.0	0	0.0	0	0.0	0	0.0	12	5.6	ALL OTHER NATURAL CAUSES <sup>2</sup>	2	3.5*	8	4.6*	8	14.8*	15	9.4	20	9.3	TOTAL NATURAL CAUSES	5	8.8*	23	13.4	11	20.3	29	18.1	86	40.1	UNINTENTIONAL INJURY (V01-X69,Y85-Y86)											MOTOR VEHICLE <sup>3</sup>	4	7.0*	16	9.3	11	20.3	34	21.2	19	8.9	WATER TRANSPORT (V90-V94)	1	1.8*	1	0.6*	0	0.0	2	1.2*	1	0.5*	AIR TRANSPORT (V95-V97)	0	0.0	0	0.0	0	0.0	0	0.0	0	0.0	OTHER TRANSPORT ACCIDENTS <sup>4</sup>	0	0.0	1	0.6*	0	0.0	1	0.6*	1	0.5*	FALLS (W00-W19)	0	0.0	1	0.6*	0	0.0	1	0.6*	1	0.5*	ACCIDENTAL DISCHARGE OF FIREARMS (W32-W34)	0	0.0	1	0.6*	0	0.0	2	1.2*	0	0.0	DROWNING (W65-W74)	4	7.0*	8	4.6*	4	7.4*	6	3.7*	10	4.7	EXPOSURE TO SMOKE, FIRE, AND FLAMES (X00-X09)	0	0.0	0	0.0	1	1.8*	1	0.6*	1	0.5*	POISONING (X40-X49)	1	1.8*	3	1.7*	3	5.5*	8	5.0*	4	1.9*	ALL OTHER UNINTENTIONAL INJURIES (W20-W31,W35-W64,W75-W99,X10-X39,X50-X59,Y86)	0	0.0	2	1.2*	1	1.8*	4	2.5*	10	4.7	TOTAL UNINTENTIONAL INJURY	10	17.6	33	19.2	20	37.0	59	36.8	47	21.9	INTENTIONAL INJURIES (U01-U03,X60-Y09,Y87.0-Y87.1)											INTENTIONAL SELF-HARM (SUICIDE) (U03,X60-X84,Y87.0)											SUICIDE BY DISCHARGE OF FIREARMS (X72-X74)	1	1.8*	2	1.2*	14	25.9	36	22.4	15	7.0	SUICIDE BY OTHER AND UNSPECIFIED MEANS (U03,X60-X71,X75-X84,Y87.0)	4	7.0*	6	3.5*	8	14.8*	19	11.8	13	6.1	TOTAL INTENTIONAL SELF-HARM (SUICIDE)	5	8.8*	8	4.6*	22	40.7	55	34.3	28	13.1	ASSAULT (U01-U02,X85-Y09,Y87.1)											ASSAULT BY DISCHARGE OF FIREARMS (U01.4,X93-X96)	1	1.8*	7	4.1*	6	11.1*	18	11.2	7	3.3*	ASSAULT BY OTHER AND UNSPECIFIED MEANS (U01.0-U01.3,U01.5-U01.9,U02,X85-X93,X96-Y09,Y87.1)	2	3.5*	3	1.7*	1	1.8*	2	1.2*	8	3.7*	TOTAL ASSAULT	3	5.3*	10	5.8	7	12.9*	20	12.5	15	7.0	TOTAL INTENTIONAL INJURIES	8	14.1*	18	10.5	29	53.6	75	46.8	43	20.1	LEGAL INTERVENTION (Y35,Y89.0)	0	0.0	0	0.0	0	0.0	0	0.0	0	0.0	UNDETERMINED INTENT (Y10-Y34,Y87.2,Y89.9)											DISCHARGE OF FIREARMS, UNKNOWN INTENT (Y22-Y24)	0	0.0	1	0.6*	0	0.0	0	0.0	0	0.0	OTHER UNDETERMINED INTENT (Y10-Y21,Y25-Y34,Y87.2)	1	1.8*	2	1.2*	1	1.8*	3	1.9*	3	1.4*	TOTAL UNDETERMINED INTENT	0	0.0	0	0.0	1	1.8*	2	1.2*	1	0.5*	COMPLICATIONS OF MEDICAL CARE (Y40-Y84,Y88)											TOTAL DEATHS	24	42.3	76	44.1	64	118.4	169	105.3	185	86.4										514	80.0																						
HEART DISEASE (I00-I09,I11,I13,I20-I51)	0	0.0	2	1.2*	0	0.0	4	2.5*	0	0.0	CEREBROVASCULAR DISEASE (I60-I69)	0	0.0	0	0.0	0	0.0	0	0.0	0	0.0	PNEUMONIA (J12-J18)	0	0.0	1	0.6*	0	0.0	2	1.2*	0	0.0	CHRONIC LOWER RESPIRATORY DISEASE (J40-J47)	0	0.0	1	0.6*	1	1.8*	1	0.6*	1	0.5*	OTHER RESPIRATORY DISEASES (J00-J06,J30-J39,J67,J70-J98)	0	0.0	1	0.6*	0	0.0	0	0.0	1	0.5*	PERINATAL CONDITIONS (P00-P96)	0	0.0	0	0.0	0	0.0	0	0.0	22	10.3	CONGENITAL MALFORMATIONS (Q00-Q99)	1	1.8*	3	1.7*	1	1.8*	3	1.9*	19	8.9	SIDS (R95)	0	0.0	0	0.0	0	0.0	0	0.0	12	5.6	ALL OTHER NATURAL CAUSES <sup>2</sup>	2	3.5*	8	4.6*	8	14.8*	15	9.4	20	9.3	TOTAL NATURAL CAUSES	5	8.8*	23	13.4	11	20.3	29	18.1	86	40.1	UNINTENTIONAL INJURY (V01-X69,Y85-Y86)											MOTOR VEHICLE <sup>3</sup>	4	7.0*	16	9.3	11	20.3	34	21.2	19	8.9	WATER TRANSPORT (V90-V94)	1	1.8*	1	0.6*	0	0.0	2	1.2*	1	0.5*	AIR TRANSPORT (V95-V97)	0	0.0	0	0.0	0	0.0	0	0.0	0	0.0	OTHER TRANSPORT ACCIDENTS <sup>4</sup>	0	0.0	1	0.6*	0	0.0	1	0.6*	1	0.5*	FALLS (W00-W19)	0	0.0	1	0.6*	0	0.0	1	0.6*	1	0.5*	ACCIDENTAL DISCHARGE OF FIREARMS (W32-W34)	0	0.0	1	0.6*	0	0.0	2	1.2*	0	0.0	DROWNING (W65-W74)	4	7.0*	8	4.6*	4	7.4*	6	3.7*	10	4.7	EXPOSURE TO SMOKE, FIRE, AND FLAMES (X00-X09)	0	0.0	0	0.0	1	1.8*	1	0.6*	1	0.5*	POISONING (X40-X49)	1	1.8*	3	1.7*	3	5.5*	8	5.0*	4	1.9*	ALL OTHER UNINTENTIONAL INJURIES (W20-W31,W35-W64,W75-W99,X10-X39,X50-X59,Y86)	0	0.0	2	1.2*	1	1.8*	4	2.5*	10	4.7	TOTAL UNINTENTIONAL INJURY	10	17.6	33	19.2	20	37.0	59	36.8	47	21.9	INTENTIONAL INJURIES (U01-U03,X60-Y09,Y87.0-Y87.1)											INTENTIONAL SELF-HARM (SUICIDE) (U03,X60-X84,Y87.0)											SUICIDE BY DISCHARGE OF FIREARMS (X72-X74)	1	1.8*	2	1.2*	14	25.9	36	22.4	15	7.0	SUICIDE BY OTHER AND UNSPECIFIED MEANS (U03,X60-X71,X75-X84,Y87.0)	4	7.0*	6	3.5*	8	14.8*	19	11.8	13	6.1	TOTAL INTENTIONAL SELF-HARM (SUICIDE)	5	8.8*	8	4.6*	22	40.7	55	34.3	28	13.1	ASSAULT (U01-U02,X85-Y09,Y87.1)											ASSAULT BY DISCHARGE OF FIREARMS (U01.4,X93-X96)	1	1.8*	7	4.1*	6	11.1*	18	11.2	7	3.3*	ASSAULT BY OTHER AND UNSPECIFIED MEANS (U01.0-U01.3,U01.5-U01.9,U02,X85-X93,X96-Y09,Y87.1)	2	3.5*	3	1.7*	1	1.8*	2	1.2*	8	3.7*	TOTAL ASSAULT	3	5.3*	10	5.8	7	12.9*	20	12.5	15	7.0	TOTAL INTENTIONAL INJURIES	8	14.1*	18	10.5	29	53.6	75	46.8	43	20.1	LEGAL INTERVENTION (Y35,Y89.0)	0	0.0	0	0.0	0	0.0	0	0.0	0	0.0	UNDETERMINED INTENT (Y10-Y34,Y87.2,Y89.9)											DISCHARGE OF FIREARMS, UNKNOWN INTENT (Y22-Y24)	0	0.0	1	0.6*	0	0.0	0	0.0	0	0.0	OTHER UNDETERMINED INTENT (Y10-Y21,Y25-Y34,Y87.2)	1	1.8*	2	1.2*	1	1.8*	3	1.9*	3	1.4*	TOTAL UNDETERMINED INTENT	0	0.0	0	0.0	1	1.8*	2	1.2*	1	0.5*	COMPLICATIONS OF MEDICAL CARE (Y40-Y84,Y88)											TOTAL DEATHS	24	42.3	76	44.1	64	118.4	169	105.3	185	86.4										514	80.0																																	
CEREBROVASCULAR DISEASE (I60-I69)	0	0.0	0	0.0	0	0.0	0	0.0	0	0.0	PNEUMONIA (J12-J18)	0	0.0	1	0.6*	0	0.0	2	1.2*	0	0.0	CHRONIC LOWER RESPIRATORY DISEASE (J40-J47)	0	0.0	1	0.6*	1	1.8*	1	0.6*	1	0.5*	OTHER RESPIRATORY DISEASES (J00-J06,J30-J39,J67,J70-J98)	0	0.0	1	0.6*	0	0.0	0	0.0	1	0.5*	PERINATAL CONDITIONS (P00-P96)	0	0.0	0	0.0	0	0.0	0	0.0	22	10.3	CONGENITAL MALFORMATIONS (Q00-Q99)	1	1.8*	3	1.7*	1	1.8*	3	1.9*	19	8.9	SIDS (R95)	0	0.0	0	0.0	0	0.0	0	0.0	12	5.6	ALL OTHER NATURAL CAUSES <sup>2</sup>	2	3.5*	8	4.6*	8	14.8*	15	9.4	20	9.3	TOTAL NATURAL CAUSES	5	8.8*	23	13.4	11	20.3	29	18.1	86	40.1	UNINTENTIONAL INJURY (V01-X69,Y85-Y86)											MOTOR VEHICLE <sup>3</sup>	4	7.0*	16	9.3	11	20.3	34	21.2	19	8.9	WATER TRANSPORT (V90-V94)	1	1.8*	1	0.6*	0	0.0	2	1.2*	1	0.5*	AIR TRANSPORT (V95-V97)	0	0.0	0	0.0	0	0.0	0	0.0	0	0.0	OTHER TRANSPORT ACCIDENTS <sup>4</sup>	0	0.0	1	0.6*	0	0.0	1	0.6*	1	0.5*	FALLS (W00-W19)	0	0.0	1	0.6*	0	0.0	1	0.6*	1	0.5*	ACCIDENTAL DISCHARGE OF FIREARMS (W32-W34)	0	0.0	1	0.6*	0	0.0	2	1.2*	0	0.0	DROWNING (W65-W74)	4	7.0*	8	4.6*	4	7.4*	6	3.7*	10	4.7	EXPOSURE TO SMOKE, FIRE, AND FLAMES (X00-X09)	0	0.0	0	0.0	1	1.8*	1	0.6*	1	0.5*	POISONING (X40-X49)	1	1.8*	3	1.7*	3	5.5*	8	5.0*	4	1.9*	ALL OTHER UNINTENTIONAL INJURIES (W20-W31,W35-W64,W75-W99,X10-X39,X50-X59,Y86)	0	0.0	2	1.2*	1	1.8*	4	2.5*	10	4.7	TOTAL UNINTENTIONAL INJURY	10	17.6	33	19.2	20	37.0	59	36.8	47	21.9	INTENTIONAL INJURIES (U01-U03,X60-Y09,Y87.0-Y87.1)											INTENTIONAL SELF-HARM (SUICIDE) (U03,X60-X84,Y87.0)											SUICIDE BY DISCHARGE OF FIREARMS (X72-X74)	1	1.8*	2	1.2*	14	25.9	36	22.4	15	7.0	SUICIDE BY OTHER AND UNSPECIFIED MEANS (U03,X60-X71,X75-X84,Y87.0)	4	7.0*	6	3.5*	8	14.8*	19	11.8	13	6.1	TOTAL INTENTIONAL SELF-HARM (SUICIDE)	5	8.8*	8	4.6*	22	40.7	55	34.3	28	13.1	ASSAULT (U01-U02,X85-Y09,Y87.1)											ASSAULT BY DISCHARGE OF FIREARMS (U01.4,X93-X96)	1	1.8*	7	4.1*	6	11.1*	18	11.2	7	3.3*	ASSAULT BY OTHER AND UNSPECIFIED MEANS (U01.0-U01.3,U01.5-U01.9,U02,X85-X93,X96-Y09,Y87.1)	2	3.5*	3	1.7*	1	1.8*	2	1.2*	8	3.7*	TOTAL ASSAULT	3	5.3*	10	5.8	7	12.9*	20	12.5	15	7.0	TOTAL INTENTIONAL INJURIES	8	14.1*	18	10.5	29	53.6	75	46.8	43	20.1	LEGAL INTERVENTION (Y35,Y89.0)	0	0.0	0	0.0	0	0.0	0	0.0	0	0.0	UNDETERMINED INTENT (Y10-Y34,Y87.2,Y89.9)											DISCHARGE OF FIREARMS, UNKNOWN INTENT (Y22-Y24)	0	0.0	1	0.6*	0	0.0	0	0.0	0	0.0	OTHER UNDETERMINED INTENT (Y10-Y21,Y25-Y34,Y87.2)	1	1.8*	2	1.2*	1	1.8*	3	1.9*	3	1.4*	TOTAL UNDETERMINED INTENT	0	0.0	0	0.0	1	1.8*	2	1.2*	1	0.5*	COMPLICATIONS OF MEDICAL CARE (Y40-Y84,Y88)											TOTAL DEATHS	24	42.3	76	44.1	64	118.4	169	105.3	185	86.4										514	80.0																																												
PNEUMONIA (J12-J18)	0	0.0	1	0.6*	0	0.0	2	1.2*	0	0.0	CHRONIC LOWER RESPIRATORY DISEASE (J40-J47)	0	0.0	1	0.6*	1	1.8*	1	0.6*	1	0.5*	OTHER RESPIRATORY DISEASES (J00-J06,J30-J39,J67,J70-J98)	0	0.0	1	0.6*	0	0.0	0	0.0	1	0.5*	PERINATAL CONDITIONS (P00-P96)	0	0.0	0	0.0	0	0.0	0	0.0	22	10.3	CONGENITAL MALFORMATIONS (Q00-Q99)	1	1.8*	3	1.7*	1	1.8*	3	1.9*	19	8.9	SIDS (R95)	0	0.0	0	0.0	0	0.0	0	0.0	12	5.6	ALL OTHER NATURAL CAUSES <sup>2</sup>	2	3.5*	8	4.6*	8	14.8*	15	9.4	20	9.3	TOTAL NATURAL CAUSES	5	8.8*	23	13.4	11	20.3	29	18.1	86	40.1	UNINTENTIONAL INJURY (V01-X69,Y85-Y86)											MOTOR VEHICLE <sup>3</sup>	4	7.0*	16	9.3	11	20.3	34	21.2	19	8.9	WATER TRANSPORT (V90-V94)	1	1.8*	1	0.6*	0	0.0	2	1.2*	1	0.5*	AIR TRANSPORT (V95-V97)	0	0.0	0	0.0	0	0.0	0	0.0	0	0.0	OTHER TRANSPORT ACCIDENTS <sup>4</sup>	0	0.0	1	0.6*	0	0.0	1	0.6*	1	0.5*	FALLS (W00-W19)	0	0.0	1	0.6*	0	0.0	1	0.6*	1	0.5*	ACCIDENTAL DISCHARGE OF FIREARMS (W32-W34)	0	0.0	1	0.6*	0	0.0	2	1.2*	0	0.0	DROWNING (W65-W74)	4	7.0*	8	4.6*	4	7.4*	6	3.7*	10	4.7	EXPOSURE TO SMOKE, FIRE, AND FLAMES (X00-X09)	0	0.0	0	0.0	1	1.8*	1	0.6*	1	0.5*	POISONING (X40-X49)	1	1.8*	3	1.7*	3	5.5*	8	5.0*	4	1.9*	ALL OTHER UNINTENTIONAL INJURIES (W20-W31,W35-W64,W75-W99,X10-X39,X50-X59,Y86)	0	0.0	2	1.2*	1	1.8*	4	2.5*	10	4.7	TOTAL UNINTENTIONAL INJURY	10	17.6	33	19.2	20	37.0	59	36.8	47	21.9	INTENTIONAL INJURIES (U01-U03,X60-Y09,Y87.0-Y87.1)											INTENTIONAL SELF-HARM (SUICIDE) (U03,X60-X84,Y87.0)											SUICIDE BY DISCHARGE OF FIREARMS (X72-X74)	1	1.8*	2	1.2*	14	25.9	36	22.4	15	7.0	SUICIDE BY OTHER AND UNSPECIFIED MEANS (U03,X60-X71,X75-X84,Y87.0)	4	7.0*	6	3.5*	8	14.8*	19	11.8	13	6.1	TOTAL INTENTIONAL SELF-HARM (SUICIDE)	5	8.8*	8	4.6*	22	40.7	55	34.3	28	13.1	ASSAULT (U01-U02,X85-Y09,Y87.1)											ASSAULT BY DISCHARGE OF FIREARMS (U01.4,X93-X96)	1	1.8*	7	4.1*	6	11.1*	18	11.2	7	3.3*	ASSAULT BY OTHER AND UNSPECIFIED MEANS (U01.0-U01.3,U01.5-U01.9,U02,X85-X93,X96-Y09,Y87.1)	2	3.5*	3	1.7*	1	1.8*	2	1.2*	8	3.7*	TOTAL ASSAULT	3	5.3*	10	5.8	7	12.9*	20	12.5	15	7.0	TOTAL INTENTIONAL INJURIES	8	14.1*	18	10.5	29	53.6	75	46.8	43	20.1	LEGAL INTERVENTION (Y35,Y89.0)	0	0.0	0	0.0	0	0.0	0	0.0	0	0.0	UNDETERMINED INTENT (Y10-Y34,Y87.2,Y89.9)											DISCHARGE OF FIREARMS, UNKNOWN INTENT (Y22-Y24)	0	0.0	1	0.6*	0	0.0	0	0.0	0	0.0	OTHER UNDETERMINED INTENT (Y10-Y21,Y25-Y34,Y87.2)	1	1.8*	2	1.2*	1	1.8*	3	1.9*	3	1.4*	TOTAL UNDETERMINED INTENT	0	0.0	0	0.0	1	1.8*	2	1.2*	1	0.5*	COMPLICATIONS OF MEDICAL CARE (Y40-Y84,Y88)											TOTAL DEATHS	24	42.3	76	44.1	64	118.4	169	105.3	185	86.4										514	80.0																																																							
CHRONIC LOWER RESPIRATORY DISEASE (J40-J47)	0	0.0	1	0.6*	1	1.8*	1	0.6*	1	0.5*	OTHER RESPIRATORY DISEASES (J00-J06,J30-J39,J67,J70-J98)	0	0.0	1	0.6*	0	0.0	0	0.0	1	0.5*	PERINATAL CONDITIONS (P00-P96)	0	0.0	0	0.0	0	0.0	0	0.0	22	10.3	CONGENITAL MALFORMATIONS (Q00-Q99)	1	1.8*	3	1.7*	1	1.8*	3	1.9*	19	8.9	SIDS (R95)	0	0.0	0	0.0	0	0.0	0	0.0	12	5.6	ALL OTHER NATURAL CAUSES <sup>2</sup>	2	3.5*	8	4.6*	8	14.8*	15	9.4	20	9.3	TOTAL NATURAL CAUSES	5	8.8*	23	13.4	11	20.3	29	18.1	86	40.1	UNINTENTIONAL INJURY (V01-X69,Y85-Y86)											MOTOR VEHICLE <sup>3</sup>	4	7.0*	16	9.3	11	20.3	34	21.2	19	8.9	WATER TRANSPORT (V90-V94)	1	1.8*	1	0.6*	0	0.0	2	1.2*	1	0.5*	AIR TRANSPORT (V95-V97)	0	0.0	0	0.0	0	0.0	0	0.0	0	0.0	OTHER TRANSPORT ACCIDENTS <sup>4</sup>	0	0.0	1	0.6*	0	0.0	1	0.6*	1	0.5*	FALLS (W00-W19)	0	0.0	1	0.6*	0	0.0	1	0.6*	1	0.5*	ACCIDENTAL DISCHARGE OF FIREARMS (W32-W34)	0	0.0	1	0.6*	0	0.0	2	1.2*	0	0.0	DROWNING (W65-W74)	4	7.0*	8	4.6*	4	7.4*	6	3.7*	10	4.7	EXPOSURE TO SMOKE, FIRE, AND FLAMES (X00-X09)	0	0.0	0	0.0	1	1.8*	1	0.6*	1	0.5*	POISONING (X40-X49)	1	1.8*	3	1.7*	3	5.5*	8	5.0*	4	1.9*	ALL OTHER UNINTENTIONAL INJURIES (W20-W31,W35-W64,W75-W99,X10-X39,X50-X59,Y86)	0	0.0	2	1.2*	1	1.8*	4	2.5*	10	4.7	TOTAL UNINTENTIONAL INJURY	10	17.6	33	19.2	20	37.0	59	36.8	47	21.9	INTENTIONAL INJURIES (U01-U03,X60-Y09,Y87.0-Y87.1)											INTENTIONAL SELF-HARM (SUICIDE) (U03,X60-X84,Y87.0)											SUICIDE BY DISCHARGE OF FIREARMS (X72-X74)	1	1.8*	2	1.2*	14	25.9	36	22.4	15	7.0	SUICIDE BY OTHER AND UNSPECIFIED MEANS (U03,X60-X71,X75-X84,Y87.0)	4	7.0*	6	3.5*	8	14.8*	19	11.8	13	6.1	TOTAL INTENTIONAL SELF-HARM (SUICIDE)	5	8.8*	8	4.6*	22	40.7	55	34.3	28	13.1	ASSAULT (U01-U02,X85-Y09,Y87.1)											ASSAULT BY DISCHARGE OF FIREARMS (U01.4,X93-X96)	1	1.8*	7	4.1*	6	11.1*	18	11.2	7	3.3*	ASSAULT BY OTHER AND UNSPECIFIED MEANS (U01.0-U01.3,U01.5-U01.9,U02,X85-X93,X96-Y09,Y87.1)	2	3.5*	3	1.7*	1	1.8*	2	1.2*	8	3.7*	TOTAL ASSAULT	3	5.3*	10	5.8	7	12.9*	20	12.5	15	7.0	TOTAL INTENTIONAL INJURIES	8	14.1*	18	10.5	29	53.6	75	46.8	43	20.1	LEGAL INTERVENTION (Y35,Y89.0)	0	0.0	0	0.0	0	0.0	0	0.0	0	0.0	UNDETERMINED INTENT (Y10-Y34,Y87.2,Y89.9)											DISCHARGE OF FIREARMS, UNKNOWN INTENT (Y22-Y24)	0	0.0	1	0.6*	0	0.0	0	0.0	0	0.0	OTHER UNDETERMINED INTENT (Y10-Y21,Y25-Y34,Y87.2)	1	1.8*	2	1.2*	1	1.8*	3	1.9*	3	1.4*	TOTAL UNDETERMINED INTENT	0	0.0	0	0.0	1	1.8*	2	1.2*	1	0.5*	COMPLICATIONS OF MEDICAL CARE (Y40-Y84,Y88)											TOTAL DEATHS	24	42.3	76	44.1	64	118.4	169	105.3	185	86.4										514	80.0																																																																		
OTHER RESPIRATORY DISEASES (J00-J06,J30-J39,J67,J70-J98)	0	0.0	1	0.6*	0	0.0	0	0.0	1	0.5*	PERINATAL CONDITIONS (P00-P96)	0	0.0	0	0.0	0	0.0	0	0.0	22	10.3	CONGENITAL MALFORMATIONS (Q00-Q99)	1	1.8*	3	1.7*	1	1.8*	3	1.9*	19	8.9	SIDS (R95)	0	0.0	0	0.0	0	0.0	0	0.0	12	5.6	ALL OTHER NATURAL CAUSES <sup>2</sup>	2	3.5*	8	4.6*	8	14.8*	15	9.4	20	9.3	TOTAL NATURAL CAUSES	5	8.8*	23	13.4	11	20.3	29	18.1	86	40.1	UNINTENTIONAL INJURY (V01-X69,Y85-Y86)											MOTOR VEHICLE <sup>3</sup>	4	7.0*	16	9.3	11	20.3	34	21.2	19	8.9	WATER TRANSPORT (V90-V94)	1	1.8*	1	0.6*	0	0.0	2	1.2*	1	0.5*	AIR TRANSPORT (V95-V97)	0	0.0	0	0.0	0	0.0	0	0.0	0	0.0	OTHER TRANSPORT ACCIDENTS <sup>4</sup>	0	0.0	1	0.6*	0	0.0	1	0.6*	1	0.5*	FALLS (W00-W19)	0	0.0	1	0.6*	0	0.0	1	0.6*	1	0.5*	ACCIDENTAL DISCHARGE OF FIREARMS (W32-W34)	0	0.0	1	0.6*	0	0.0	2	1.2*	0	0.0	DROWNING (W65-W74)	4	7.0*	8	4.6*	4	7.4*	6	3.7*	10	4.7	EXPOSURE TO SMOKE, FIRE, AND FLAMES (X00-X09)	0	0.0	0	0.0	1	1.8*	1	0.6*	1	0.5*	POISONING (X40-X49)	1	1.8*	3	1.7*	3	5.5*	8	5.0*	4	1.9*	ALL OTHER UNINTENTIONAL INJURIES (W20-W31,W35-W64,W75-W99,X10-X39,X50-X59,Y86)	0	0.0	2	1.2*	1	1.8*	4	2.5*	10	4.7	TOTAL UNINTENTIONAL INJURY	10	17.6	33	19.2	20	37.0	59	36.8	47	21.9	INTENTIONAL INJURIES (U01-U03,X60-Y09,Y87.0-Y87.1)											INTENTIONAL SELF-HARM (SUICIDE) (U03,X60-X84,Y87.0)											SUICIDE BY DISCHARGE OF FIREARMS (X72-X74)	1	1.8*	2	1.2*	14	25.9	36	22.4	15	7.0	SUICIDE BY OTHER AND UNSPECIFIED MEANS (U03,X60-X71,X75-X84,Y87.0)	4	7.0*	6	3.5*	8	14.8*	19	11.8	13	6.1	TOTAL INTENTIONAL SELF-HARM (SUICIDE)	5	8.8*	8	4.6*	22	40.7	55	34.3	28	13.1	ASSAULT (U01-U02,X85-Y09,Y87.1)											ASSAULT BY DISCHARGE OF FIREARMS (U01.4,X93-X96)	1	1.8*	7	4.1*	6	11.1*	18	11.2	7	3.3*	ASSAULT BY OTHER AND UNSPECIFIED MEANS (U01.0-U01.3,U01.5-U01.9,U02,X85-X93,X96-Y09,Y87.1)	2	3.5*	3	1.7*	1	1.8*	2	1.2*	8	3.7*	TOTAL ASSAULT	3	5.3*	10	5.8	7	12.9*	20	12.5	15	7.0	TOTAL INTENTIONAL INJURIES	8	14.1*	18	10.5	29	53.6	75	46.8	43	20.1	LEGAL INTERVENTION (Y35,Y89.0)	0	0.0	0	0.0	0	0.0	0	0.0	0	0.0	UNDETERMINED INTENT (Y10-Y34,Y87.2,Y89.9)											DISCHARGE OF FIREARMS, UNKNOWN INTENT (Y22-Y24)	0	0.0	1	0.6*	0	0.0	0	0.0	0	0.0	OTHER UNDETERMINED INTENT (Y10-Y21,Y25-Y34,Y87.2)	1	1.8*	2	1.2*	1	1.8*	3	1.9*	3	1.4*	TOTAL UNDETERMINED INTENT	0	0.0	0	0.0	1	1.8*	2	1.2*	1	0.5*	COMPLICATIONS OF MEDICAL CARE (Y40-Y84,Y88)											TOTAL DEATHS	24	42.3	76	44.1	64	118.4	169	105.3	185	86.4										514	80.0																																																																													
PERINATAL CONDITIONS (P00-P96)	0	0.0	0	0.0	0	0.0	0	0.0	22	10.3	CONGENITAL MALFORMATIONS (Q00-Q99)	1	1.8*	3	1.7*	1	1.8*	3	1.9*	19	8.9	SIDS (R95)	0	0.0	0	0.0	0	0.0	0	0.0	12	5.6	ALL OTHER NATURAL CAUSES <sup>2</sup>	2	3.5*	8	4.6*	8	14.8*	15	9.4	20	9.3	TOTAL NATURAL CAUSES	5	8.8*	23	13.4	11	20.3	29	18.1	86	40.1	UNINTENTIONAL INJURY (V01-X69,Y85-Y86)											MOTOR VEHICLE <sup>3</sup>	4	7.0*	16	9.3	11	20.3	34	21.2	19	8.9	WATER TRANSPORT (V90-V94)	1	1.8*	1	0.6*	0	0.0	2	1.2*	1	0.5*	AIR TRANSPORT (V95-V97)	0	0.0	0	0.0	0	0.0	0	0.0	0	0.0	OTHER TRANSPORT ACCIDENTS <sup>4</sup>	0	0.0	1	0.6*	0	0.0	1	0.6*	1	0.5*	FALLS (W00-W19)	0	0.0	1	0.6*	0	0.0	1	0.6*	1	0.5*	ACCIDENTAL DISCHARGE OF FIREARMS (W32-W34)	0	0.0	1	0.6*	0	0.0	2	1.2*	0	0.0	DROWNING (W65-W74)	4	7.0*	8	4.6*	4	7.4*	6	3.7*	10	4.7	EXPOSURE TO SMOKE, FIRE, AND FLAMES (X00-X09)	0	0.0	0	0.0	1	1.8*	1	0.6*	1	0.5*	POISONING (X40-X49)	1	1.8*	3	1.7*	3	5.5*	8	5.0*	4	1.9*	ALL OTHER UNINTENTIONAL INJURIES (W20-W31,W35-W64,W75-W99,X10-X39,X50-X59,Y86)	0	0.0	2	1.2*	1	1.8*	4	2.5*	10	4.7	TOTAL UNINTENTIONAL INJURY	10	17.6	33	19.2	20	37.0	59	36.8	47	21.9	INTENTIONAL INJURIES (U01-U03,X60-Y09,Y87.0-Y87.1)											INTENTIONAL SELF-HARM (SUICIDE) (U03,X60-X84,Y87.0)											SUICIDE BY DISCHARGE OF FIREARMS (X72-X74)	1	1.8*	2	1.2*	14	25.9	36	22.4	15	7.0	SUICIDE BY OTHER AND UNSPECIFIED MEANS (U03,X60-X71,X75-X84,Y87.0)	4	7.0*	6	3.5*	8	14.8*	19	11.8	13	6.1	TOTAL INTENTIONAL SELF-HARM (SUICIDE)	5	8.8*	8	4.6*	22	40.7	55	34.3	28	13.1	ASSAULT (U01-U02,X85-Y09,Y87.1)											ASSAULT BY DISCHARGE OF FIREARMS (U01.4,X93-X96)	1	1.8*	7	4.1*	6	11.1*	18	11.2	7	3.3*	ASSAULT BY OTHER AND UNSPECIFIED MEANS (U01.0-U01.3,U01.5-U01.9,U02,X85-X93,X96-Y09,Y87.1)	2	3.5*	3	1.7*	1	1.8*	2	1.2*	8	3.7*	TOTAL ASSAULT	3	5.3*	10	5.8	7	12.9*	20	12.5	15	7.0	TOTAL INTENTIONAL INJURIES	8	14.1*	18	10.5	29	53.6	75	46.8	43	20.1	LEGAL INTERVENTION (Y35,Y89.0)	0	0.0	0	0.0	0	0.0	0	0.0	0	0.0	UNDETERMINED INTENT (Y10-Y34,Y87.2,Y89.9)											DISCHARGE OF FIREARMS, UNKNOWN INTENT (Y22-Y24)	0	0.0	1	0.6*	0	0.0	0	0.0	0	0.0	OTHER UNDETERMINED INTENT (Y10-Y21,Y25-Y34,Y87.2)	1	1.8*	2	1.2*	1	1.8*	3	1.9*	3	1.4*	TOTAL UNDETERMINED INTENT	0	0.0	0	0.0	1	1.8*	2	1.2*	1	0.5*	COMPLICATIONS OF MEDICAL CARE (Y40-Y84,Y88)											TOTAL DEATHS	24	42.3	76	44.1	64	118.4	169	105.3	185	86.4										514	80.0																																																																																								
CONGENITAL MALFORMATIONS (Q00-Q99)	1	1.8*	3	1.7*	1	1.8*	3	1.9*	19	8.9	SIDS (R95)	0	0.0	0	0.0	0	0.0	0	0.0	12	5.6	ALL OTHER NATURAL CAUSES <sup>2</sup>	2	3.5*	8	4.6*	8	14.8*	15	9.4	20	9.3	TOTAL NATURAL CAUSES	5	8.8*	23	13.4	11	20.3	29	18.1	86	40.1	UNINTENTIONAL INJURY (V01-X69,Y85-Y86)											MOTOR VEHICLE <sup>3</sup>	4	7.0*	16	9.3	11	20.3	34	21.2	19	8.9	WATER TRANSPORT (V90-V94)	1	1.8*	1	0.6*	0	0.0	2	1.2*	1	0.5*	AIR TRANSPORT (V95-V97)	0	0.0	0	0.0	0	0.0	0	0.0	0	0.0	OTHER TRANSPORT ACCIDENTS <sup>4</sup>	0	0.0	1	0.6*	0	0.0	1	0.6*	1	0.5*	FALLS (W00-W19)	0	0.0	1	0.6*	0	0.0	1	0.6*	1	0.5*	ACCIDENTAL DISCHARGE OF FIREARMS (W32-W34)	0	0.0	1	0.6*	0	0.0	2	1.2*	0	0.0	DROWNING (W65-W74)	4	7.0*	8	4.6*	4	7.4*	6	3.7*	10	4.7	EXPOSURE TO SMOKE, FIRE, AND FLAMES (X00-X09)	0	0.0	0	0.0	1	1.8*	1	0.6*	1	0.5*	POISONING (X40-X49)	1	1.8*	3	1.7*	3	5.5*	8	5.0*	4	1.9*	ALL OTHER UNINTENTIONAL INJURIES (W20-W31,W35-W64,W75-W99,X10-X39,X50-X59,Y86)	0	0.0	2	1.2*	1	1.8*	4	2.5*	10	4.7	TOTAL UNINTENTIONAL INJURY	10	17.6	33	19.2	20	37.0	59	36.8	47	21.9	INTENTIONAL INJURIES (U01-U03,X60-Y09,Y87.0-Y87.1)											INTENTIONAL SELF-HARM (SUICIDE) (U03,X60-X84,Y87.0)											SUICIDE BY DISCHARGE OF FIREARMS (X72-X74)	1	1.8*	2	1.2*	14	25.9	36	22.4	15	7.0	SUICIDE BY OTHER AND UNSPECIFIED MEANS (U03,X60-X71,X75-X84,Y87.0)	4	7.0*	6	3.5*	8	14.8*	19	11.8	13	6.1	TOTAL INTENTIONAL SELF-HARM (SUICIDE)	5	8.8*	8	4.6*	22	40.7	55	34.3	28	13.1	ASSAULT (U01-U02,X85-Y09,Y87.1)											ASSAULT BY DISCHARGE OF FIREARMS (U01.4,X93-X96)	1	1.8*	7	4.1*	6	11.1*	18	11.2	7	3.3*	ASSAULT BY OTHER AND UNSPECIFIED MEANS (U01.0-U01.3,U01.5-U01.9,U02,X85-X93,X96-Y09,Y87.1)	2	3.5*	3	1.7*	1	1.8*	2	1.2*	8	3.7*	TOTAL ASSAULT	3	5.3*	10	5.8	7	12.9*	20	12.5	15	7.0	TOTAL INTENTIONAL INJURIES	8	14.1*	18	10.5	29	53.6	75	46.8	43	20.1	LEGAL INTERVENTION (Y35,Y89.0)	0	0.0	0	0.0	0	0.0	0	0.0	0	0.0	UNDETERMINED INTENT (Y10-Y34,Y87.2,Y89.9)											DISCHARGE OF FIREARMS, UNKNOWN INTENT (Y22-Y24)	0	0.0	1	0.6*	0	0.0	0	0.0	0	0.0	OTHER UNDETERMINED INTENT (Y10-Y21,Y25-Y34,Y87.2)	1	1.8*	2	1.2*	1	1.8*	3	1.9*	3	1.4*	TOTAL UNDETERMINED INTENT	0	0.0	0	0.0	1	1.8*	2	1.2*	1	0.5*	COMPLICATIONS OF MEDICAL CARE (Y40-Y84,Y88)											TOTAL DEATHS	24	42.3	76	44.1	64	118.4	169	105.3	185	86.4										514	80.0																																																																																																			
SIDS (R95)	0	0.0	0	0.0	0	0.0	0	0.0	12	5.6	ALL OTHER NATURAL CAUSES <sup>2</sup>	2	3.5*	8	4.6*	8	14.8*	15	9.4	20	9.3	TOTAL NATURAL CAUSES	5	8.8*	23	13.4	11	20.3	29	18.1	86	40.1	UNINTENTIONAL INJURY (V01-X69,Y85-Y86)											MOTOR VEHICLE <sup>3</sup>	4	7.0*	16	9.3	11	20.3	34	21.2	19	8.9	WATER TRANSPORT (V90-V94)	1	1.8*	1	0.6*	0	0.0	2	1.2*	1	0.5*	AIR TRANSPORT (V95-V97)	0	0.0	0	0.0	0	0.0	0	0.0	0	0.0	OTHER TRANSPORT ACCIDENTS <sup>4</sup>	0	0.0	1	0.6*	0	0.0	1	0.6*	1	0.5*	FALLS (W00-W19)	0	0.0	1	0.6*	0	0.0	1	0.6*	1	0.5*	ACCIDENTAL DISCHARGE OF FIREARMS (W32-W34)	0	0.0	1	0.6*	0	0.0	2	1.2*	0	0.0	DROWNING (W65-W74)	4	7.0*	8	4.6*	4	7.4*	6	3.7*	10	4.7	EXPOSURE TO SMOKE, FIRE, AND FLAMES (X00-X09)	0	0.0	0	0.0	1	1.8*	1	0.6*	1	0.5*	POISONING (X40-X49)	1	1.8*	3	1.7*	3	5.5*	8	5.0*	4	1.9*	ALL OTHER UNINTENTIONAL INJURIES (W20-W31,W35-W64,W75-W99,X10-X39,X50-X59,Y86)	0	0.0	2	1.2*	1	1.8*	4	2.5*	10	4.7	TOTAL UNINTENTIONAL INJURY	10	17.6	33	19.2	20	37.0	59	36.8	47	21.9	INTENTIONAL INJURIES (U01-U03,X60-Y09,Y87.0-Y87.1)											INTENTIONAL SELF-HARM (SUICIDE) (U03,X60-X84,Y87.0)											SUICIDE BY DISCHARGE OF FIREARMS (X72-X74)	1	1.8*	2	1.2*	14	25.9	36	22.4	15	7.0	SUICIDE BY OTHER AND UNSPECIFIED MEANS (U03,X60-X71,X75-X84,Y87.0)	4	7.0*	6	3.5*	8	14.8*	19	11.8	13	6.1	TOTAL INTENTIONAL SELF-HARM (SUICIDE)	5	8.8*	8	4.6*	22	40.7	55	34.3	28	13.1	ASSAULT (U01-U02,X85-Y09,Y87.1)											ASSAULT BY DISCHARGE OF FIREARMS (U01.4,X93-X96)	1	1.8*	7	4.1*	6	11.1*	18	11.2	7	3.3*	ASSAULT BY OTHER AND UNSPECIFIED MEANS (U01.0-U01.3,U01.5-U01.9,U02,X85-X93,X96-Y09,Y87.1)	2	3.5*	3	1.7*	1	1.8*	2	1.2*	8	3.7*	TOTAL ASSAULT	3	5.3*	10	5.8	7	12.9*	20	12.5	15	7.0	TOTAL INTENTIONAL INJURIES	8	14.1*	18	10.5	29	53.6	75	46.8	43	20.1	LEGAL INTERVENTION (Y35,Y89.0)	0	0.0	0	0.0	0	0.0	0	0.0	0	0.0	UNDETERMINED INTENT (Y10-Y34,Y87.2,Y89.9)											DISCHARGE OF FIREARMS, UNKNOWN INTENT (Y22-Y24)	0	0.0	1	0.6*	0	0.0	0	0.0	0	0.0	OTHER UNDETERMINED INTENT (Y10-Y21,Y25-Y34,Y87.2)	1	1.8*	2	1.2*	1	1.8*	3	1.9*	3	1.4*	TOTAL UNDETERMINED INTENT	0	0.0	0	0.0	1	1.8*	2	1.2*	1	0.5*	COMPLICATIONS OF MEDICAL CARE (Y40-Y84,Y88)											TOTAL DEATHS	24	42.3	76	44.1	64	118.4	169	105.3	185	86.4										514	80.0																																																																																																														
ALL OTHER NATURAL CAUSES <sup>2</sup>	2	3.5*	8	4.6*	8	14.8*	15	9.4	20	9.3	TOTAL NATURAL CAUSES	5	8.8*	23	13.4	11	20.3	29	18.1	86	40.1	UNINTENTIONAL INJURY (V01-X69,Y85-Y86)											MOTOR VEHICLE <sup>3</sup>	4	7.0*	16	9.3	11	20.3	34	21.2	19	8.9	WATER TRANSPORT (V90-V94)	1	1.8*	1	0.6*	0	0.0	2	1.2*	1	0.5*	AIR TRANSPORT (V95-V97)	0	0.0	0	0.0	0	0.0	0	0.0	0	0.0	OTHER TRANSPORT ACCIDENTS <sup>4</sup>	0	0.0	1	0.6*	0	0.0	1	0.6*	1	0.5*	FALLS (W00-W19)	0	0.0	1	0.6*	0	0.0	1	0.6*	1	0.5*	ACCIDENTAL DISCHARGE OF FIREARMS (W32-W34)	0	0.0	1	0.6*	0	0.0	2	1.2*	0	0.0	DROWNING (W65-W74)	4	7.0*	8	4.6*	4	7.4*	6	3.7*	10	4.7	EXPOSURE TO SMOKE, FIRE, AND FLAMES (X00-X09)	0	0.0	0	0.0	1	1.8*	1	0.6*	1	0.5*	POISONING (X40-X49)	1	1.8*	3	1.7*	3	5.5*	8	5.0*	4	1.9*	ALL OTHER UNINTENTIONAL INJURIES (W20-W31,W35-W64,W75-W99,X10-X39,X50-X59,Y86)	0	0.0	2	1.2*	1	1.8*	4	2.5*	10	4.7	TOTAL UNINTENTIONAL INJURY	10	17.6	33	19.2	20	37.0	59	36.8	47	21.9	INTENTIONAL INJURIES (U01-U03,X60-Y09,Y87.0-Y87.1)											INTENTIONAL SELF-HARM (SUICIDE) (U03,X60-X84,Y87.0)											SUICIDE BY DISCHARGE OF FIREARMS (X72-X74)	1	1.8*	2	1.2*	14	25.9	36	22.4	15	7.0	SUICIDE BY OTHER AND UNSPECIFIED MEANS (U03,X60-X71,X75-X84,Y87.0)	4	7.0*	6	3.5*	8	14.8*	19	11.8	13	6.1	TOTAL INTENTIONAL SELF-HARM (SUICIDE)	5	8.8*	8	4.6*	22	40.7	55	34.3	28	13.1	ASSAULT (U01-U02,X85-Y09,Y87.1)											ASSAULT BY DISCHARGE OF FIREARMS (U01.4,X93-X96)	1	1.8*	7	4.1*	6	11.1*	18	11.2	7	3.3*	ASSAULT BY OTHER AND UNSPECIFIED MEANS (U01.0-U01.3,U01.5-U01.9,U02,X85-X93,X96-Y09,Y87.1)	2	3.5*	3	1.7*	1	1.8*	2	1.2*	8	3.7*	TOTAL ASSAULT	3	5.3*	10	5.8	7	12.9*	20	12.5	15	7.0	TOTAL INTENTIONAL INJURIES	8	14.1*	18	10.5	29	53.6	75	46.8	43	20.1	LEGAL INTERVENTION (Y35,Y89.0)	0	0.0	0	0.0	0	0.0	0	0.0	0	0.0	UNDETERMINED INTENT (Y10-Y34,Y87.2,Y89.9)											DISCHARGE OF FIREARMS, UNKNOWN INTENT (Y22-Y24)	0	0.0	1	0.6*	0	0.0	0	0.0	0	0.0	OTHER UNDETERMINED INTENT (Y10-Y21,Y25-Y34,Y87.2)	1	1.8*	2	1.2*	1	1.8*	3	1.9*	3	1.4*	TOTAL UNDETERMINED INTENT	0	0.0	0	0.0	1	1.8*	2	1.2*	1	0.5*	COMPLICATIONS OF MEDICAL CARE (Y40-Y84,Y88)											TOTAL DEATHS	24	42.3	76	44.1	64	118.4	169	105.3	185	86.4										514	80.0																																																																																																																									
TOTAL NATURAL CAUSES	5	8.8*	23	13.4	11	20.3	29	18.1	86	40.1	UNINTENTIONAL INJURY (V01-X69,Y85-Y86)											MOTOR VEHICLE <sup>3</sup>	4	7.0*	16	9.3	11	20.3	34	21.2	19	8.9	WATER TRANSPORT (V90-V94)	1	1.8*	1	0.6*	0	0.0	2	1.2*	1	0.5*	AIR TRANSPORT (V95-V97)	0	0.0	0	0.0	0	0.0	0	0.0	0	0.0	OTHER TRANSPORT ACCIDENTS <sup>4</sup>	0	0.0	1	0.6*	0	0.0	1	0.6*	1	0.5*	FALLS (W00-W19)	0	0.0	1	0.6*	0	0.0	1	0.6*	1	0.5*	ACCIDENTAL DISCHARGE OF FIREARMS (W32-W34)	0	0.0	1	0.6*	0	0.0	2	1.2*	0	0.0	DROWNING (W65-W74)	4	7.0*	8	4.6*	4	7.4*	6	3.7*	10	4.7	EXPOSURE TO SMOKE, FIRE, AND FLAMES (X00-X09)	0	0.0	0	0.0	1	1.8*	1	0.6*	1	0.5*	POISONING (X40-X49)	1	1.8*	3	1.7*	3	5.5*	8	5.0*	4	1.9*	ALL OTHER UNINTENTIONAL INJURIES (W20-W31,W35-W64,W75-W99,X10-X39,X50-X59,Y86)	0	0.0	2	1.2*	1	1.8*	4	2.5*	10	4.7	TOTAL UNINTENTIONAL INJURY	10	17.6	33	19.2	20	37.0	59	36.8	47	21.9	INTENTIONAL INJURIES (U01-U03,X60-Y09,Y87.0-Y87.1)											INTENTIONAL SELF-HARM (SUICIDE) (U03,X60-X84,Y87.0)											SUICIDE BY DISCHARGE OF FIREARMS (X72-X74)	1	1.8*	2	1.2*	14	25.9	36	22.4	15	7.0	SUICIDE BY OTHER AND UNSPECIFIED MEANS (U03,X60-X71,X75-X84,Y87.0)	4	7.0*	6	3.5*	8	14.8*	19	11.8	13	6.1	TOTAL INTENTIONAL SELF-HARM (SUICIDE)	5	8.8*	8	4.6*	22	40.7	55	34.3	28	13.1	ASSAULT (U01-U02,X85-Y09,Y87.1)											ASSAULT BY DISCHARGE OF FIREARMS (U01.4,X93-X96)	1	1.8*	7	4.1*	6	11.1*	18	11.2	7	3.3*	ASSAULT BY OTHER AND UNSPECIFIED MEANS (U01.0-U01.3,U01.5-U01.9,U02,X85-X93,X96-Y09,Y87.1)	2	3.5*	3	1.7*	1	1.8*	2	1.2*	8	3.7*	TOTAL ASSAULT	3	5.3*	10	5.8	7	12.9*	20	12.5	15	7.0	TOTAL INTENTIONAL INJURIES	8	14.1*	18	10.5	29	53.6	75	46.8	43	20.1	LEGAL INTERVENTION (Y35,Y89.0)	0	0.0	0	0.0	0	0.0	0	0.0	0	0.0	UNDETERMINED INTENT (Y10-Y34,Y87.2,Y89.9)											DISCHARGE OF FIREARMS, UNKNOWN INTENT (Y22-Y24)	0	0.0	1	0.6*	0	0.0	0	0.0	0	0.0	OTHER UNDETERMINED INTENT (Y10-Y21,Y25-Y34,Y87.2)	1	1.8*	2	1.2*	1	1.8*	3	1.9*	3	1.4*	TOTAL UNDETERMINED INTENT	0	0.0	0	0.0	1	1.8*	2	1.2*	1	0.5*	COMPLICATIONS OF MEDICAL CARE (Y40-Y84,Y88)											TOTAL DEATHS	24	42.3	76	44.1	64	118.4	169	105.3	185	86.4										514	80.0																																																																																																																																				
UNINTENTIONAL INJURY (V01-X69,Y85-Y86)											MOTOR VEHICLE <sup>3</sup>	4	7.0*	16	9.3	11	20.3	34	21.2	19	8.9	WATER TRANSPORT (V90-V94)	1	1.8*	1	0.6*	0	0.0	2	1.2*	1	0.5*	AIR TRANSPORT (V95-V97)	0	0.0	0	0.0	0	0.0	0	0.0	0	0.0	OTHER TRANSPORT ACCIDENTS <sup>4</sup>	0	0.0	1	0.6*	0	0.0	1	0.6*	1	0.5*	FALLS (W00-W19)	0	0.0	1	0.6*	0	0.0	1	0.6*	1	0.5*	ACCIDENTAL DISCHARGE OF FIREARMS (W32-W34)	0	0.0	1	0.6*	0	0.0	2	1.2*	0	0.0	DROWNING (W65-W74)	4	7.0*	8	4.6*	4	7.4*	6	3.7*	10	4.7	EXPOSURE TO SMOKE, FIRE, AND FLAMES (X00-X09)	0	0.0	0	0.0	1	1.8*	1	0.6*	1	0.5*	POISONING (X40-X49)	1	1.8*	3	1.7*	3	5.5*	8	5.0*	4	1.9*	ALL OTHER UNINTENTIONAL INJURIES (W20-W31,W35-W64,W75-W99,X10-X39,X50-X59,Y86)	0	0.0	2	1.2*	1	1.8*	4	2.5*	10	4.7	TOTAL UNINTENTIONAL INJURY	10	17.6	33	19.2	20	37.0	59	36.8	47	21.9	INTENTIONAL INJURIES (U01-U03,X60-Y09,Y87.0-Y87.1)											INTENTIONAL SELF-HARM (SUICIDE) (U03,X60-X84,Y87.0)											SUICIDE BY DISCHARGE OF FIREARMS (X72-X74)	1	1.8*	2	1.2*	14	25.9	36	22.4	15	7.0	SUICIDE BY OTHER AND UNSPECIFIED MEANS (U03,X60-X71,X75-X84,Y87.0)	4	7.0*	6	3.5*	8	14.8*	19	11.8	13	6.1	TOTAL INTENTIONAL SELF-HARM (SUICIDE)	5	8.8*	8	4.6*	22	40.7	55	34.3	28	13.1	ASSAULT (U01-U02,X85-Y09,Y87.1)											ASSAULT BY DISCHARGE OF FIREARMS (U01.4,X93-X96)	1	1.8*	7	4.1*	6	11.1*	18	11.2	7	3.3*	ASSAULT BY OTHER AND UNSPECIFIED MEANS (U01.0-U01.3,U01.5-U01.9,U02,X85-X93,X96-Y09,Y87.1)	2	3.5*	3	1.7*	1	1.8*	2	1.2*	8	3.7*	TOTAL ASSAULT	3	5.3*	10	5.8	7	12.9*	20	12.5	15	7.0	TOTAL INTENTIONAL INJURIES	8	14.1*	18	10.5	29	53.6	75	46.8	43	20.1	LEGAL INTERVENTION (Y35,Y89.0)	0	0.0	0	0.0	0	0.0	0	0.0	0	0.0	UNDETERMINED INTENT (Y10-Y34,Y87.2,Y89.9)											DISCHARGE OF FIREARMS, UNKNOWN INTENT (Y22-Y24)	0	0.0	1	0.6*	0	0.0	0	0.0	0	0.0	OTHER UNDETERMINED INTENT (Y10-Y21,Y25-Y34,Y87.2)	1	1.8*	2	1.2*	1	1.8*	3	1.9*	3	1.4*	TOTAL UNDETERMINED INTENT	0	0.0	0	0.0	1	1.8*	2	1.2*	1	0.5*	COMPLICATIONS OF MEDICAL CARE (Y40-Y84,Y88)											TOTAL DEATHS	24	42.3	76	44.1	64	118.4	169	105.3	185	86.4										514	80.0																																																																																																																																															
MOTOR VEHICLE <sup>3</sup>	4	7.0*	16	9.3	11	20.3	34	21.2	19	8.9	WATER TRANSPORT (V90-V94)	1	1.8*	1	0.6*	0	0.0	2	1.2*	1	0.5*	AIR TRANSPORT (V95-V97)	0	0.0	0	0.0	0	0.0	0	0.0	0	0.0	OTHER TRANSPORT ACCIDENTS <sup>4</sup>	0	0.0	1	0.6*	0	0.0	1	0.6*	1	0.5*	FALLS (W00-W19)	0	0.0	1	0.6*	0	0.0	1	0.6*	1	0.5*	ACCIDENTAL DISCHARGE OF FIREARMS (W32-W34)	0	0.0	1	0.6*	0	0.0	2	1.2*	0	0.0	DROWNING (W65-W74)	4	7.0*	8	4.6*	4	7.4*	6	3.7*	10	4.7	EXPOSURE TO SMOKE, FIRE, AND FLAMES (X00-X09)	0	0.0	0	0.0	1	1.8*	1	0.6*	1	0.5*	POISONING (X40-X49)	1	1.8*	3	1.7*	3	5.5*	8	5.0*	4	1.9*	ALL OTHER UNINTENTIONAL INJURIES (W20-W31,W35-W64,W75-W99,X10-X39,X50-X59,Y86)	0	0.0	2	1.2*	1	1.8*	4	2.5*	10	4.7	TOTAL UNINTENTIONAL INJURY	10	17.6	33	19.2	20	37.0	59	36.8	47	21.9	INTENTIONAL INJURIES (U01-U03,X60-Y09,Y87.0-Y87.1)											INTENTIONAL SELF-HARM (SUICIDE) (U03,X60-X84,Y87.0)											SUICIDE BY DISCHARGE OF FIREARMS (X72-X74)	1	1.8*	2	1.2*	14	25.9	36	22.4	15	7.0	SUICIDE BY OTHER AND UNSPECIFIED MEANS (U03,X60-X71,X75-X84,Y87.0)	4	7.0*	6	3.5*	8	14.8*	19	11.8	13	6.1	TOTAL INTENTIONAL SELF-HARM (SUICIDE)	5	8.8*	8	4.6*	22	40.7	55	34.3	28	13.1	ASSAULT (U01-U02,X85-Y09,Y87.1)											ASSAULT BY DISCHARGE OF FIREARMS (U01.4,X93-X96)	1	1.8*	7	4.1*	6	11.1*	18	11.2	7	3.3*	ASSAULT BY OTHER AND UNSPECIFIED MEANS (U01.0-U01.3,U01.5-U01.9,U02,X85-X93,X96-Y09,Y87.1)	2	3.5*	3	1.7*	1	1.8*	2	1.2*	8	3.7*	TOTAL ASSAULT	3	5.3*	10	5.8	7	12.9*	20	12.5	15	7.0	TOTAL INTENTIONAL INJURIES	8	14.1*	18	10.5	29	53.6	75	46.8	43	20.1	LEGAL INTERVENTION (Y35,Y89.0)	0	0.0	0	0.0	0	0.0	0	0.0	0	0.0	UNDETERMINED INTENT (Y10-Y34,Y87.2,Y89.9)											DISCHARGE OF FIREARMS, UNKNOWN INTENT (Y22-Y24)	0	0.0	1	0.6*	0	0.0	0	0.0	0	0.0	OTHER UNDETERMINED INTENT (Y10-Y21,Y25-Y34,Y87.2)	1	1.8*	2	1.2*	1	1.8*	3	1.9*	3	1.4*	TOTAL UNDETERMINED INTENT	0	0.0	0	0.0	1	1.8*	2	1.2*	1	0.5*	COMPLICATIONS OF MEDICAL CARE (Y40-Y84,Y88)											TOTAL DEATHS	24	42.3	76	44.1	64	118.4	169	105.3	185	86.4										514	80.0																																																																																																																																																										
WATER TRANSPORT (V90-V94)	1	1.8*	1	0.6*	0	0.0	2	1.2*	1	0.5*	AIR TRANSPORT (V95-V97)	0	0.0	0	0.0	0	0.0	0	0.0	0	0.0	OTHER TRANSPORT ACCIDENTS <sup>4</sup>	0	0.0	1	0.6*	0	0.0	1	0.6*	1	0.5*	FALLS (W00-W19)	0	0.0	1	0.6*	0	0.0	1	0.6*	1	0.5*	ACCIDENTAL DISCHARGE OF FIREARMS (W32-W34)	0	0.0	1	0.6*	0	0.0	2	1.2*	0	0.0	DROWNING (W65-W74)	4	7.0*	8	4.6*	4	7.4*	6	3.7*	10	4.7	EXPOSURE TO SMOKE, FIRE, AND FLAMES (X00-X09)	0	0.0	0	0.0	1	1.8*	1	0.6*	1	0.5*	POISONING (X40-X49)	1	1.8*	3	1.7*	3	5.5*	8	5.0*	4	1.9*	ALL OTHER UNINTENTIONAL INJURIES (W20-W31,W35-W64,W75-W99,X10-X39,X50-X59,Y86)	0	0.0	2	1.2*	1	1.8*	4	2.5*	10	4.7	TOTAL UNINTENTIONAL INJURY	10	17.6	33	19.2	20	37.0	59	36.8	47	21.9	INTENTIONAL INJURIES (U01-U03,X60-Y09,Y87.0-Y87.1)											INTENTIONAL SELF-HARM (SUICIDE) (U03,X60-X84,Y87.0)											SUICIDE BY DISCHARGE OF FIREARMS (X72-X74)	1	1.8*	2	1.2*	14	25.9	36	22.4	15	7.0	SUICIDE BY OTHER AND UNSPECIFIED MEANS (U03,X60-X71,X75-X84,Y87.0)	4	7.0*	6	3.5*	8	14.8*	19	11.8	13	6.1	TOTAL INTENTIONAL SELF-HARM (SUICIDE)	5	8.8*	8	4.6*	22	40.7	55	34.3	28	13.1	ASSAULT (U01-U02,X85-Y09,Y87.1)											ASSAULT BY DISCHARGE OF FIREARMS (U01.4,X93-X96)	1	1.8*	7	4.1*	6	11.1*	18	11.2	7	3.3*	ASSAULT BY OTHER AND UNSPECIFIED MEANS (U01.0-U01.3,U01.5-U01.9,U02,X85-X93,X96-Y09,Y87.1)	2	3.5*	3	1.7*	1	1.8*	2	1.2*	8	3.7*	TOTAL ASSAULT	3	5.3*	10	5.8	7	12.9*	20	12.5	15	7.0	TOTAL INTENTIONAL INJURIES	8	14.1*	18	10.5	29	53.6	75	46.8	43	20.1	LEGAL INTERVENTION (Y35,Y89.0)	0	0.0	0	0.0	0	0.0	0	0.0	0	0.0	UNDETERMINED INTENT (Y10-Y34,Y87.2,Y89.9)											DISCHARGE OF FIREARMS, UNKNOWN INTENT (Y22-Y24)	0	0.0	1	0.6*	0	0.0	0	0.0	0	0.0	OTHER UNDETERMINED INTENT (Y10-Y21,Y25-Y34,Y87.2)	1	1.8*	2	1.2*	1	1.8*	3	1.9*	3	1.4*	TOTAL UNDETERMINED INTENT	0	0.0	0	0.0	1	1.8*	2	1.2*	1	0.5*	COMPLICATIONS OF MEDICAL CARE (Y40-Y84,Y88)											TOTAL DEATHS	24	42.3	76	44.1	64	118.4	169	105.3	185	86.4										514	80.0																																																																																																																																																																					
AIR TRANSPORT (V95-V97)	0	0.0	0	0.0	0	0.0	0	0.0	0	0.0	OTHER TRANSPORT ACCIDENTS <sup>4</sup>	0	0.0	1	0.6*	0	0.0	1	0.6*	1	0.5*	FALLS (W00-W19)	0	0.0	1	0.6*	0	0.0	1	0.6*	1	0.5*	ACCIDENTAL DISCHARGE OF FIREARMS (W32-W34)	0	0.0	1	0.6*	0	0.0	2	1.2*	0	0.0	DROWNING (W65-W74)	4	7.0*	8	4.6*	4	7.4*	6	3.7*	10	4.7	EXPOSURE TO SMOKE, FIRE, AND FLAMES (X00-X09)	0	0.0	0	0.0	1	1.8*	1	0.6*	1	0.5*	POISONING (X40-X49)	1	1.8*	3	1.7*	3	5.5*	8	5.0*	4	1.9*	ALL OTHER UNINTENTIONAL INJURIES (W20-W31,W35-W64,W75-W99,X10-X39,X50-X59,Y86)	0	0.0	2	1.2*	1	1.8*	4	2.5*	10	4.7	TOTAL UNINTENTIONAL INJURY	10	17.6	33	19.2	20	37.0	59	36.8	47	21.9	INTENTIONAL INJURIES (U01-U03,X60-Y09,Y87.0-Y87.1)											INTENTIONAL SELF-HARM (SUICIDE) (U03,X60-X84,Y87.0)											SUICIDE BY DISCHARGE OF FIREARMS (X72-X74)	1	1.8*	2	1.2*	14	25.9	36	22.4	15	7.0	SUICIDE BY OTHER AND UNSPECIFIED MEANS (U03,X60-X71,X75-X84,Y87.0)	4	7.0*	6	3.5*	8	14.8*	19	11.8	13	6.1	TOTAL INTENTIONAL SELF-HARM (SUICIDE)	5	8.8*	8	4.6*	22	40.7	55	34.3	28	13.1	ASSAULT (U01-U02,X85-Y09,Y87.1)											ASSAULT BY DISCHARGE OF FIREARMS (U01.4,X93-X96)	1	1.8*	7	4.1*	6	11.1*	18	11.2	7	3.3*	ASSAULT BY OTHER AND UNSPECIFIED MEANS (U01.0-U01.3,U01.5-U01.9,U02,X85-X93,X96-Y09,Y87.1)	2	3.5*	3	1.7*	1	1.8*	2	1.2*	8	3.7*	TOTAL ASSAULT	3	5.3*	10	5.8	7	12.9*	20	12.5	15	7.0	TOTAL INTENTIONAL INJURIES	8	14.1*	18	10.5	29	53.6	75	46.8	43	20.1	LEGAL INTERVENTION (Y35,Y89.0)	0	0.0	0	0.0	0	0.0	0	0.0	0	0.0	UNDETERMINED INTENT (Y10-Y34,Y87.2,Y89.9)											DISCHARGE OF FIREARMS, UNKNOWN INTENT (Y22-Y24)	0	0.0	1	0.6*	0	0.0	0	0.0	0	0.0	OTHER UNDETERMINED INTENT (Y10-Y21,Y25-Y34,Y87.2)	1	1.8*	2	1.2*	1	1.8*	3	1.9*	3	1.4*	TOTAL UNDETERMINED INTENT	0	0.0	0	0.0	1	1.8*	2	1.2*	1	0.5*	COMPLICATIONS OF MEDICAL CARE (Y40-Y84,Y88)											TOTAL DEATHS	24	42.3	76	44.1	64	118.4	169	105.3	185	86.4										514	80.0																																																																																																																																																																																
OTHER TRANSPORT ACCIDENTS <sup>4</sup>	0	0.0	1	0.6*	0	0.0	1	0.6*	1	0.5*	FALLS (W00-W19)	0	0.0	1	0.6*	0	0.0	1	0.6*	1	0.5*	ACCIDENTAL DISCHARGE OF FIREARMS (W32-W34)	0	0.0	1	0.6*	0	0.0	2	1.2*	0	0.0	DROWNING (W65-W74)	4	7.0*	8	4.6*	4	7.4*	6	3.7*	10	4.7	EXPOSURE TO SMOKE, FIRE, AND FLAMES (X00-X09)	0	0.0	0	0.0	1	1.8*	1	0.6*	1	0.5*	POISONING (X40-X49)	1	1.8*	3	1.7*	3	5.5*	8	5.0*	4	1.9*	ALL OTHER UNINTENTIONAL INJURIES (W20-W31,W35-W64,W75-W99,X10-X39,X50-X59,Y86)	0	0.0	2	1.2*	1	1.8*	4	2.5*	10	4.7	TOTAL UNINTENTIONAL INJURY	10	17.6	33	19.2	20	37.0	59	36.8	47	21.9	INTENTIONAL INJURIES (U01-U03,X60-Y09,Y87.0-Y87.1)											INTENTIONAL SELF-HARM (SUICIDE) (U03,X60-X84,Y87.0)											SUICIDE BY DISCHARGE OF FIREARMS (X72-X74)	1	1.8*	2	1.2*	14	25.9	36	22.4	15	7.0	SUICIDE BY OTHER AND UNSPECIFIED MEANS (U03,X60-X71,X75-X84,Y87.0)	4	7.0*	6	3.5*	8	14.8*	19	11.8	13	6.1	TOTAL INTENTIONAL SELF-HARM (SUICIDE)	5	8.8*	8	4.6*	22	40.7	55	34.3	28	13.1	ASSAULT (U01-U02,X85-Y09,Y87.1)											ASSAULT BY DISCHARGE OF FIREARMS (U01.4,X93-X96)	1	1.8*	7	4.1*	6	11.1*	18	11.2	7	3.3*	ASSAULT BY OTHER AND UNSPECIFIED MEANS (U01.0-U01.3,U01.5-U01.9,U02,X85-X93,X96-Y09,Y87.1)	2	3.5*	3	1.7*	1	1.8*	2	1.2*	8	3.7*	TOTAL ASSAULT	3	5.3*	10	5.8	7	12.9*	20	12.5	15	7.0	TOTAL INTENTIONAL INJURIES	8	14.1*	18	10.5	29	53.6	75	46.8	43	20.1	LEGAL INTERVENTION (Y35,Y89.0)	0	0.0	0	0.0	0	0.0	0	0.0	0	0.0	UNDETERMINED INTENT (Y10-Y34,Y87.2,Y89.9)											DISCHARGE OF FIREARMS, UNKNOWN INTENT (Y22-Y24)	0	0.0	1	0.6*	0	0.0	0	0.0	0	0.0	OTHER UNDETERMINED INTENT (Y10-Y21,Y25-Y34,Y87.2)	1	1.8*	2	1.2*	1	1.8*	3	1.9*	3	1.4*	TOTAL UNDETERMINED INTENT	0	0.0	0	0.0	1	1.8*	2	1.2*	1	0.5*	COMPLICATIONS OF MEDICAL CARE (Y40-Y84,Y88)											TOTAL DEATHS	24	42.3	76	44.1	64	118.4	169	105.3	185	86.4										514	80.0																																																																																																																																																																																											
FALLS (W00-W19)	0	0.0	1	0.6*	0	0.0	1	0.6*	1	0.5*	ACCIDENTAL DISCHARGE OF FIREARMS (W32-W34)	0	0.0	1	0.6*	0	0.0	2	1.2*	0	0.0	DROWNING (W65-W74)	4	7.0*	8	4.6*	4	7.4*	6	3.7*	10	4.7	EXPOSURE TO SMOKE, FIRE, AND FLAMES (X00-X09)	0	0.0	0	0.0	1	1.8*	1	0.6*	1	0.5*	POISONING (X40-X49)	1	1.8*	3	1.7*	3	5.5*	8	5.0*	4	1.9*	ALL OTHER UNINTENTIONAL INJURIES (W20-W31,W35-W64,W75-W99,X10-X39,X50-X59,Y86)	0	0.0	2	1.2*	1	1.8*	4	2.5*	10	4.7	TOTAL UNINTENTIONAL INJURY	10	17.6	33	19.2	20	37.0	59	36.8	47	21.9	INTENTIONAL INJURIES (U01-U03,X60-Y09,Y87.0-Y87.1)											INTENTIONAL SELF-HARM (SUICIDE) (U03,X60-X84,Y87.0)											SUICIDE BY DISCHARGE OF FIREARMS (X72-X74)	1	1.8*	2	1.2*	14	25.9	36	22.4	15	7.0	SUICIDE BY OTHER AND UNSPECIFIED MEANS (U03,X60-X71,X75-X84,Y87.0)	4	7.0*	6	3.5*	8	14.8*	19	11.8	13	6.1	TOTAL INTENTIONAL SELF-HARM (SUICIDE)	5	8.8*	8	4.6*	22	40.7	55	34.3	28	13.1	ASSAULT (U01-U02,X85-Y09,Y87.1)											ASSAULT BY DISCHARGE OF FIREARMS (U01.4,X93-X96)	1	1.8*	7	4.1*	6	11.1*	18	11.2	7	3.3*	ASSAULT BY OTHER AND UNSPECIFIED MEANS (U01.0-U01.3,U01.5-U01.9,U02,X85-X93,X96-Y09,Y87.1)	2	3.5*	3	1.7*	1	1.8*	2	1.2*	8	3.7*	TOTAL ASSAULT	3	5.3*	10	5.8	7	12.9*	20	12.5	15	7.0	TOTAL INTENTIONAL INJURIES	8	14.1*	18	10.5	29	53.6	75	46.8	43	20.1	LEGAL INTERVENTION (Y35,Y89.0)	0	0.0	0	0.0	0	0.0	0	0.0	0	0.0	UNDETERMINED INTENT (Y10-Y34,Y87.2,Y89.9)											DISCHARGE OF FIREARMS, UNKNOWN INTENT (Y22-Y24)	0	0.0	1	0.6*	0	0.0	0	0.0	0	0.0	OTHER UNDETERMINED INTENT (Y10-Y21,Y25-Y34,Y87.2)	1	1.8*	2	1.2*	1	1.8*	3	1.9*	3	1.4*	TOTAL UNDETERMINED INTENT	0	0.0	0	0.0	1	1.8*	2	1.2*	1	0.5*	COMPLICATIONS OF MEDICAL CARE (Y40-Y84,Y88)											TOTAL DEATHS	24	42.3	76	44.1	64	118.4	169	105.3	185	86.4										514	80.0																																																																																																																																																																																																						
ACCIDENTAL DISCHARGE OF FIREARMS (W32-W34)	0	0.0	1	0.6*	0	0.0	2	1.2*	0	0.0	DROWNING (W65-W74)	4	7.0*	8	4.6*	4	7.4*	6	3.7*	10	4.7	EXPOSURE TO SMOKE, FIRE, AND FLAMES (X00-X09)	0	0.0	0	0.0	1	1.8*	1	0.6*	1	0.5*	POISONING (X40-X49)	1	1.8*	3	1.7*	3	5.5*	8	5.0*	4	1.9*	ALL OTHER UNINTENTIONAL INJURIES (W20-W31,W35-W64,W75-W99,X10-X39,X50-X59,Y86)	0	0.0	2	1.2*	1	1.8*	4	2.5*	10	4.7	TOTAL UNINTENTIONAL INJURY	10	17.6	33	19.2	20	37.0	59	36.8	47	21.9	INTENTIONAL INJURIES (U01-U03,X60-Y09,Y87.0-Y87.1)											INTENTIONAL SELF-HARM (SUICIDE) (U03,X60-X84,Y87.0)											SUICIDE BY DISCHARGE OF FIREARMS (X72-X74)	1	1.8*	2	1.2*	14	25.9	36	22.4	15	7.0	SUICIDE BY OTHER AND UNSPECIFIED MEANS (U03,X60-X71,X75-X84,Y87.0)	4	7.0*	6	3.5*	8	14.8*	19	11.8	13	6.1	TOTAL INTENTIONAL SELF-HARM (SUICIDE)	5	8.8*	8	4.6*	22	40.7	55	34.3	28	13.1	ASSAULT (U01-U02,X85-Y09,Y87.1)											ASSAULT BY DISCHARGE OF FIREARMS (U01.4,X93-X96)	1	1.8*	7	4.1*	6	11.1*	18	11.2	7	3.3*	ASSAULT BY OTHER AND UNSPECIFIED MEANS (U01.0-U01.3,U01.5-U01.9,U02,X85-X93,X96-Y09,Y87.1)	2	3.5*	3	1.7*	1	1.8*	2	1.2*	8	3.7*	TOTAL ASSAULT	3	5.3*	10	5.8	7	12.9*	20	12.5	15	7.0	TOTAL INTENTIONAL INJURIES	8	14.1*	18	10.5	29	53.6	75	46.8	43	20.1	LEGAL INTERVENTION (Y35,Y89.0)	0	0.0	0	0.0	0	0.0	0	0.0	0	0.0	UNDETERMINED INTENT (Y10-Y34,Y87.2,Y89.9)											DISCHARGE OF FIREARMS, UNKNOWN INTENT (Y22-Y24)	0	0.0	1	0.6*	0	0.0	0	0.0	0	0.0	OTHER UNDETERMINED INTENT (Y10-Y21,Y25-Y34,Y87.2)	1	1.8*	2	1.2*	1	1.8*	3	1.9*	3	1.4*	TOTAL UNDETERMINED INTENT	0	0.0	0	0.0	1	1.8*	2	1.2*	1	0.5*	COMPLICATIONS OF MEDICAL CARE (Y40-Y84,Y88)											TOTAL DEATHS	24	42.3	76	44.1	64	118.4	169	105.3	185	86.4										514	80.0																																																																																																																																																																																																																	
DROWNING (W65-W74)	4	7.0*	8	4.6*	4	7.4*	6	3.7*	10	4.7	EXPOSURE TO SMOKE, FIRE, AND FLAMES (X00-X09)	0	0.0	0	0.0	1	1.8*	1	0.6*	1	0.5*	POISONING (X40-X49)	1	1.8*	3	1.7*	3	5.5*	8	5.0*	4	1.9*	ALL OTHER UNINTENTIONAL INJURIES (W20-W31,W35-W64,W75-W99,X10-X39,X50-X59,Y86)	0	0.0	2	1.2*	1	1.8*	4	2.5*	10	4.7	TOTAL UNINTENTIONAL INJURY	10	17.6	33	19.2	20	37.0	59	36.8	47	21.9	INTENTIONAL INJURIES (U01-U03,X60-Y09,Y87.0-Y87.1)											INTENTIONAL SELF-HARM (SUICIDE) (U03,X60-X84,Y87.0)											SUICIDE BY DISCHARGE OF FIREARMS (X72-X74)	1	1.8*	2	1.2*	14	25.9	36	22.4	15	7.0	SUICIDE BY OTHER AND UNSPECIFIED MEANS (U03,X60-X71,X75-X84,Y87.0)	4	7.0*	6	3.5*	8	14.8*	19	11.8	13	6.1	TOTAL INTENTIONAL SELF-HARM (SUICIDE)	5	8.8*	8	4.6*	22	40.7	55	34.3	28	13.1	ASSAULT (U01-U02,X85-Y09,Y87.1)											ASSAULT BY DISCHARGE OF FIREARMS (U01.4,X93-X96)	1	1.8*	7	4.1*	6	11.1*	18	11.2	7	3.3*	ASSAULT BY OTHER AND UNSPECIFIED MEANS (U01.0-U01.3,U01.5-U01.9,U02,X85-X93,X96-Y09,Y87.1)	2	3.5*	3	1.7*	1	1.8*	2	1.2*	8	3.7*	TOTAL ASSAULT	3	5.3*	10	5.8	7	12.9*	20	12.5	15	7.0	TOTAL INTENTIONAL INJURIES	8	14.1*	18	10.5	29	53.6	75	46.8	43	20.1	LEGAL INTERVENTION (Y35,Y89.0)	0	0.0	0	0.0	0	0.0	0	0.0	0	0.0	UNDETERMINED INTENT (Y10-Y34,Y87.2,Y89.9)											DISCHARGE OF FIREARMS, UNKNOWN INTENT (Y22-Y24)	0	0.0	1	0.6*	0	0.0	0	0.0	0	0.0	OTHER UNDETERMINED INTENT (Y10-Y21,Y25-Y34,Y87.2)	1	1.8*	2	1.2*	1	1.8*	3	1.9*	3	1.4*	TOTAL UNDETERMINED INTENT	0	0.0	0	0.0	1	1.8*	2	1.2*	1	0.5*	COMPLICATIONS OF MEDICAL CARE (Y40-Y84,Y88)											TOTAL DEATHS	24	42.3	76	44.1	64	118.4	169	105.3	185	86.4										514	80.0																																																																																																																																																																																																																												
EXPOSURE TO SMOKE, FIRE, AND FLAMES (X00-X09)	0	0.0	0	0.0	1	1.8*	1	0.6*	1	0.5*	POISONING (X40-X49)	1	1.8*	3	1.7*	3	5.5*	8	5.0*	4	1.9*	ALL OTHER UNINTENTIONAL INJURIES (W20-W31,W35-W64,W75-W99,X10-X39,X50-X59,Y86)	0	0.0	2	1.2*	1	1.8*	4	2.5*	10	4.7	TOTAL UNINTENTIONAL INJURY	10	17.6	33	19.2	20	37.0	59	36.8	47	21.9	INTENTIONAL INJURIES (U01-U03,X60-Y09,Y87.0-Y87.1)											INTENTIONAL SELF-HARM (SUICIDE) (U03,X60-X84,Y87.0)											SUICIDE BY DISCHARGE OF FIREARMS (X72-X74)	1	1.8*	2	1.2*	14	25.9	36	22.4	15	7.0	SUICIDE BY OTHER AND UNSPECIFIED MEANS (U03,X60-X71,X75-X84,Y87.0)	4	7.0*	6	3.5*	8	14.8*	19	11.8	13	6.1	TOTAL INTENTIONAL SELF-HARM (SUICIDE)	5	8.8*	8	4.6*	22	40.7	55	34.3	28	13.1	ASSAULT (U01-U02,X85-Y09,Y87.1)											ASSAULT BY DISCHARGE OF FIREARMS (U01.4,X93-X96)	1	1.8*	7	4.1*	6	11.1*	18	11.2	7	3.3*	ASSAULT BY OTHER AND UNSPECIFIED MEANS (U01.0-U01.3,U01.5-U01.9,U02,X85-X93,X96-Y09,Y87.1)	2	3.5*	3	1.7*	1	1.8*	2	1.2*	8	3.7*	TOTAL ASSAULT	3	5.3*	10	5.8	7	12.9*	20	12.5	15	7.0	TOTAL INTENTIONAL INJURIES	8	14.1*	18	10.5	29	53.6	75	46.8	43	20.1	LEGAL INTERVENTION (Y35,Y89.0)	0	0.0	0	0.0	0	0.0	0	0.0	0	0.0	UNDETERMINED INTENT (Y10-Y34,Y87.2,Y89.9)											DISCHARGE OF FIREARMS, UNKNOWN INTENT (Y22-Y24)	0	0.0	1	0.6*	0	0.0	0	0.0	0	0.0	OTHER UNDETERMINED INTENT (Y10-Y21,Y25-Y34,Y87.2)	1	1.8*	2	1.2*	1	1.8*	3	1.9*	3	1.4*	TOTAL UNDETERMINED INTENT	0	0.0	0	0.0	1	1.8*	2	1.2*	1	0.5*	COMPLICATIONS OF MEDICAL CARE (Y40-Y84,Y88)											TOTAL DEATHS	24	42.3	76	44.1	64	118.4	169	105.3	185	86.4										514	80.0																																																																																																																																																																																																																																							
POISONING (X40-X49)	1	1.8*	3	1.7*	3	5.5*	8	5.0*	4	1.9*	ALL OTHER UNINTENTIONAL INJURIES (W20-W31,W35-W64,W75-W99,X10-X39,X50-X59,Y86)	0	0.0	2	1.2*	1	1.8*	4	2.5*	10	4.7	TOTAL UNINTENTIONAL INJURY	10	17.6	33	19.2	20	37.0	59	36.8	47	21.9	INTENTIONAL INJURIES (U01-U03,X60-Y09,Y87.0-Y87.1)											INTENTIONAL SELF-HARM (SUICIDE) (U03,X60-X84,Y87.0)											SUICIDE BY DISCHARGE OF FIREARMS (X72-X74)	1	1.8*	2	1.2*	14	25.9	36	22.4	15	7.0	SUICIDE BY OTHER AND UNSPECIFIED MEANS (U03,X60-X71,X75-X84,Y87.0)	4	7.0*	6	3.5*	8	14.8*	19	11.8	13	6.1	TOTAL INTENTIONAL SELF-HARM (SUICIDE)	5	8.8*	8	4.6*	22	40.7	55	34.3	28	13.1	ASSAULT (U01-U02,X85-Y09,Y87.1)											ASSAULT BY DISCHARGE OF FIREARMS (U01.4,X93-X96)	1	1.8*	7	4.1*	6	11.1*	18	11.2	7	3.3*	ASSAULT BY OTHER AND UNSPECIFIED MEANS (U01.0-U01.3,U01.5-U01.9,U02,X85-X93,X96-Y09,Y87.1)	2	3.5*	3	1.7*	1	1.8*	2	1.2*	8	3.7*	TOTAL ASSAULT	3	5.3*	10	5.8	7	12.9*	20	12.5	15	7.0	TOTAL INTENTIONAL INJURIES	8	14.1*	18	10.5	29	53.6	75	46.8	43	20.1	LEGAL INTERVENTION (Y35,Y89.0)	0	0.0	0	0.0	0	0.0	0	0.0	0	0.0	UNDETERMINED INTENT (Y10-Y34,Y87.2,Y89.9)											DISCHARGE OF FIREARMS, UNKNOWN INTENT (Y22-Y24)	0	0.0	1	0.6*	0	0.0	0	0.0	0	0.0	OTHER UNDETERMINED INTENT (Y10-Y21,Y25-Y34,Y87.2)	1	1.8*	2	1.2*	1	1.8*	3	1.9*	3	1.4*	TOTAL UNDETERMINED INTENT	0	0.0	0	0.0	1	1.8*	2	1.2*	1	0.5*	COMPLICATIONS OF MEDICAL CARE (Y40-Y84,Y88)											TOTAL DEATHS	24	42.3	76	44.1	64	118.4	169	105.3	185	86.4										514	80.0																																																																																																																																																																																																																																																		
ALL OTHER UNINTENTIONAL INJURIES (W20-W31,W35-W64,W75-W99,X10-X39,X50-X59,Y86)	0	0.0	2	1.2*	1	1.8*	4	2.5*	10	4.7	TOTAL UNINTENTIONAL INJURY	10	17.6	33	19.2	20	37.0	59	36.8	47	21.9	INTENTIONAL INJURIES (U01-U03,X60-Y09,Y87.0-Y87.1)											INTENTIONAL SELF-HARM (SUICIDE) (U03,X60-X84,Y87.0)											SUICIDE BY DISCHARGE OF FIREARMS (X72-X74)	1	1.8*	2	1.2*	14	25.9	36	22.4	15	7.0	SUICIDE BY OTHER AND UNSPECIFIED MEANS (U03,X60-X71,X75-X84,Y87.0)	4	7.0*	6	3.5*	8	14.8*	19	11.8	13	6.1	TOTAL INTENTIONAL SELF-HARM (SUICIDE)	5	8.8*	8	4.6*	22	40.7	55	34.3	28	13.1	ASSAULT (U01-U02,X85-Y09,Y87.1)											ASSAULT BY DISCHARGE OF FIREARMS (U01.4,X93-X96)	1	1.8*	7	4.1*	6	11.1*	18	11.2	7	3.3*	ASSAULT BY OTHER AND UNSPECIFIED MEANS (U01.0-U01.3,U01.5-U01.9,U02,X85-X93,X96-Y09,Y87.1)	2	3.5*	3	1.7*	1	1.8*	2	1.2*	8	3.7*	TOTAL ASSAULT	3	5.3*	10	5.8	7	12.9*	20	12.5	15	7.0	TOTAL INTENTIONAL INJURIES	8	14.1*	18	10.5	29	53.6	75	46.8	43	20.1	LEGAL INTERVENTION (Y35,Y89.0)	0	0.0	0	0.0	0	0.0	0	0.0	0	0.0	UNDETERMINED INTENT (Y10-Y34,Y87.2,Y89.9)											DISCHARGE OF FIREARMS, UNKNOWN INTENT (Y22-Y24)	0	0.0	1	0.6*	0	0.0	0	0.0	0	0.0	OTHER UNDETERMINED INTENT (Y10-Y21,Y25-Y34,Y87.2)	1	1.8*	2	1.2*	1	1.8*	3	1.9*	3	1.4*	TOTAL UNDETERMINED INTENT	0	0.0	0	0.0	1	1.8*	2	1.2*	1	0.5*	COMPLICATIONS OF MEDICAL CARE (Y40-Y84,Y88)											TOTAL DEATHS	24	42.3	76	44.1	64	118.4	169	105.3	185	86.4										514	80.0																																																																																																																																																																																																																																																													
TOTAL UNINTENTIONAL INJURY	10	17.6	33	19.2	20	37.0	59	36.8	47	21.9	INTENTIONAL INJURIES (U01-U03,X60-Y09,Y87.0-Y87.1)											INTENTIONAL SELF-HARM (SUICIDE) (U03,X60-X84,Y87.0)											SUICIDE BY DISCHARGE OF FIREARMS (X72-X74)	1	1.8*	2	1.2*	14	25.9	36	22.4	15	7.0	SUICIDE BY OTHER AND UNSPECIFIED MEANS (U03,X60-X71,X75-X84,Y87.0)	4	7.0*	6	3.5*	8	14.8*	19	11.8	13	6.1	TOTAL INTENTIONAL SELF-HARM (SUICIDE)	5	8.8*	8	4.6*	22	40.7	55	34.3	28	13.1	ASSAULT (U01-U02,X85-Y09,Y87.1)											ASSAULT BY DISCHARGE OF FIREARMS (U01.4,X93-X96)	1	1.8*	7	4.1*	6	11.1*	18	11.2	7	3.3*	ASSAULT BY OTHER AND UNSPECIFIED MEANS (U01.0-U01.3,U01.5-U01.9,U02,X85-X93,X96-Y09,Y87.1)	2	3.5*	3	1.7*	1	1.8*	2	1.2*	8	3.7*	TOTAL ASSAULT	3	5.3*	10	5.8	7	12.9*	20	12.5	15	7.0	TOTAL INTENTIONAL INJURIES	8	14.1*	18	10.5	29	53.6	75	46.8	43	20.1	LEGAL INTERVENTION (Y35,Y89.0)	0	0.0	0	0.0	0	0.0	0	0.0	0	0.0	UNDETERMINED INTENT (Y10-Y34,Y87.2,Y89.9)											DISCHARGE OF FIREARMS, UNKNOWN INTENT (Y22-Y24)	0	0.0	1	0.6*	0	0.0	0	0.0	0	0.0	OTHER UNDETERMINED INTENT (Y10-Y21,Y25-Y34,Y87.2)	1	1.8*	2	1.2*	1	1.8*	3	1.9*	3	1.4*	TOTAL UNDETERMINED INTENT	0	0.0	0	0.0	1	1.8*	2	1.2*	1	0.5*	COMPLICATIONS OF MEDICAL CARE (Y40-Y84,Y88)											TOTAL DEATHS	24	42.3	76	44.1	64	118.4	169	105.3	185	86.4										514	80.0																																																																																																																																																																																																																																																																								
INTENTIONAL INJURIES (U01-U03,X60-Y09,Y87.0-Y87.1)											INTENTIONAL SELF-HARM (SUICIDE) (U03,X60-X84,Y87.0)											SUICIDE BY DISCHARGE OF FIREARMS (X72-X74)	1	1.8*	2	1.2*	14	25.9	36	22.4	15	7.0	SUICIDE BY OTHER AND UNSPECIFIED MEANS (U03,X60-X71,X75-X84,Y87.0)	4	7.0*	6	3.5*	8	14.8*	19	11.8	13	6.1	TOTAL INTENTIONAL SELF-HARM (SUICIDE)	5	8.8*	8	4.6*	22	40.7	55	34.3	28	13.1	ASSAULT (U01-U02,X85-Y09,Y87.1)											ASSAULT BY DISCHARGE OF FIREARMS (U01.4,X93-X96)	1	1.8*	7	4.1*	6	11.1*	18	11.2	7	3.3*	ASSAULT BY OTHER AND UNSPECIFIED MEANS (U01.0-U01.3,U01.5-U01.9,U02,X85-X93,X96-Y09,Y87.1)	2	3.5*	3	1.7*	1	1.8*	2	1.2*	8	3.7*	TOTAL ASSAULT	3	5.3*	10	5.8	7	12.9*	20	12.5	15	7.0	TOTAL INTENTIONAL INJURIES	8	14.1*	18	10.5	29	53.6	75	46.8	43	20.1	LEGAL INTERVENTION (Y35,Y89.0)	0	0.0	0	0.0	0	0.0	0	0.0	0	0.0	UNDETERMINED INTENT (Y10-Y34,Y87.2,Y89.9)											DISCHARGE OF FIREARMS, UNKNOWN INTENT (Y22-Y24)	0	0.0	1	0.6*	0	0.0	0	0.0	0	0.0	OTHER UNDETERMINED INTENT (Y10-Y21,Y25-Y34,Y87.2)	1	1.8*	2	1.2*	1	1.8*	3	1.9*	3	1.4*	TOTAL UNDETERMINED INTENT	0	0.0	0	0.0	1	1.8*	2	1.2*	1	0.5*	COMPLICATIONS OF MEDICAL CARE (Y40-Y84,Y88)											TOTAL DEATHS	24	42.3	76	44.1	64	118.4	169	105.3	185	86.4										514	80.0																																																																																																																																																																																																																																																																																			
INTENTIONAL SELF-HARM (SUICIDE) (U03,X60-X84,Y87.0)											SUICIDE BY DISCHARGE OF FIREARMS (X72-X74)	1	1.8*	2	1.2*	14	25.9	36	22.4	15	7.0	SUICIDE BY OTHER AND UNSPECIFIED MEANS (U03,X60-X71,X75-X84,Y87.0)	4	7.0*	6	3.5*	8	14.8*	19	11.8	13	6.1	TOTAL INTENTIONAL SELF-HARM (SUICIDE)	5	8.8*	8	4.6*	22	40.7	55	34.3	28	13.1	ASSAULT (U01-U02,X85-Y09,Y87.1)											ASSAULT BY DISCHARGE OF FIREARMS (U01.4,X93-X96)	1	1.8*	7	4.1*	6	11.1*	18	11.2	7	3.3*	ASSAULT BY OTHER AND UNSPECIFIED MEANS (U01.0-U01.3,U01.5-U01.9,U02,X85-X93,X96-Y09,Y87.1)	2	3.5*	3	1.7*	1	1.8*	2	1.2*	8	3.7*	TOTAL ASSAULT	3	5.3*	10	5.8	7	12.9*	20	12.5	15	7.0	TOTAL INTENTIONAL INJURIES	8	14.1*	18	10.5	29	53.6	75	46.8	43	20.1	LEGAL INTERVENTION (Y35,Y89.0)	0	0.0	0	0.0	0	0.0	0	0.0	0	0.0	UNDETERMINED INTENT (Y10-Y34,Y87.2,Y89.9)											DISCHARGE OF FIREARMS, UNKNOWN INTENT (Y22-Y24)	0	0.0	1	0.6*	0	0.0	0	0.0	0	0.0	OTHER UNDETERMINED INTENT (Y10-Y21,Y25-Y34,Y87.2)	1	1.8*	2	1.2*	1	1.8*	3	1.9*	3	1.4*	TOTAL UNDETERMINED INTENT	0	0.0	0	0.0	1	1.8*	2	1.2*	1	0.5*	COMPLICATIONS OF MEDICAL CARE (Y40-Y84,Y88)											TOTAL DEATHS	24	42.3	76	44.1	64	118.4	169	105.3	185	86.4										514	80.0																																																																																																																																																																																																																																																																																														
SUICIDE BY DISCHARGE OF FIREARMS (X72-X74)	1	1.8*	2	1.2*	14	25.9	36	22.4	15	7.0	SUICIDE BY OTHER AND UNSPECIFIED MEANS (U03,X60-X71,X75-X84,Y87.0)	4	7.0*	6	3.5*	8	14.8*	19	11.8	13	6.1	TOTAL INTENTIONAL SELF-HARM (SUICIDE)	5	8.8*	8	4.6*	22	40.7	55	34.3	28	13.1	ASSAULT (U01-U02,X85-Y09,Y87.1)											ASSAULT BY DISCHARGE OF FIREARMS (U01.4,X93-X96)	1	1.8*	7	4.1*	6	11.1*	18	11.2	7	3.3*	ASSAULT BY OTHER AND UNSPECIFIED MEANS (U01.0-U01.3,U01.5-U01.9,U02,X85-X93,X96-Y09,Y87.1)	2	3.5*	3	1.7*	1	1.8*	2	1.2*	8	3.7*	TOTAL ASSAULT	3	5.3*	10	5.8	7	12.9*	20	12.5	15	7.0	TOTAL INTENTIONAL INJURIES	8	14.1*	18	10.5	29	53.6	75	46.8	43	20.1	LEGAL INTERVENTION (Y35,Y89.0)	0	0.0	0	0.0	0	0.0	0	0.0	0	0.0	UNDETERMINED INTENT (Y10-Y34,Y87.2,Y89.9)											DISCHARGE OF FIREARMS, UNKNOWN INTENT (Y22-Y24)	0	0.0	1	0.6*	0	0.0	0	0.0	0	0.0	OTHER UNDETERMINED INTENT (Y10-Y21,Y25-Y34,Y87.2)	1	1.8*	2	1.2*	1	1.8*	3	1.9*	3	1.4*	TOTAL UNDETERMINED INTENT	0	0.0	0	0.0	1	1.8*	2	1.2*	1	0.5*	COMPLICATIONS OF MEDICAL CARE (Y40-Y84,Y88)											TOTAL DEATHS	24	42.3	76	44.1	64	118.4	169	105.3	185	86.4										514	80.0																																																																																																																																																																																																																																																																																																									
SUICIDE BY OTHER AND UNSPECIFIED MEANS (U03,X60-X71,X75-X84,Y87.0)	4	7.0*	6	3.5*	8	14.8*	19	11.8	13	6.1	TOTAL INTENTIONAL SELF-HARM (SUICIDE)	5	8.8*	8	4.6*	22	40.7	55	34.3	28	13.1	ASSAULT (U01-U02,X85-Y09,Y87.1)											ASSAULT BY DISCHARGE OF FIREARMS (U01.4,X93-X96)	1	1.8*	7	4.1*	6	11.1*	18	11.2	7	3.3*	ASSAULT BY OTHER AND UNSPECIFIED MEANS (U01.0-U01.3,U01.5-U01.9,U02,X85-X93,X96-Y09,Y87.1)	2	3.5*	3	1.7*	1	1.8*	2	1.2*	8	3.7*	TOTAL ASSAULT	3	5.3*	10	5.8	7	12.9*	20	12.5	15	7.0	TOTAL INTENTIONAL INJURIES	8	14.1*	18	10.5	29	53.6	75	46.8	43	20.1	LEGAL INTERVENTION (Y35,Y89.0)	0	0.0	0	0.0	0	0.0	0	0.0	0	0.0	UNDETERMINED INTENT (Y10-Y34,Y87.2,Y89.9)											DISCHARGE OF FIREARMS, UNKNOWN INTENT (Y22-Y24)	0	0.0	1	0.6*	0	0.0	0	0.0	0	0.0	OTHER UNDETERMINED INTENT (Y10-Y21,Y25-Y34,Y87.2)	1	1.8*	2	1.2*	1	1.8*	3	1.9*	3	1.4*	TOTAL UNDETERMINED INTENT	0	0.0	0	0.0	1	1.8*	2	1.2*	1	0.5*	COMPLICATIONS OF MEDICAL CARE (Y40-Y84,Y88)											TOTAL DEATHS	24	42.3	76	44.1	64	118.4	169	105.3	185	86.4										514	80.0																																																																																																																																																																																																																																																																																																																				
TOTAL INTENTIONAL SELF-HARM (SUICIDE)	5	8.8*	8	4.6*	22	40.7	55	34.3	28	13.1	ASSAULT (U01-U02,X85-Y09,Y87.1)											ASSAULT BY DISCHARGE OF FIREARMS (U01.4,X93-X96)	1	1.8*	7	4.1*	6	11.1*	18	11.2	7	3.3*	ASSAULT BY OTHER AND UNSPECIFIED MEANS (U01.0-U01.3,U01.5-U01.9,U02,X85-X93,X96-Y09,Y87.1)	2	3.5*	3	1.7*	1	1.8*	2	1.2*	8	3.7*	TOTAL ASSAULT	3	5.3*	10	5.8	7	12.9*	20	12.5	15	7.0	TOTAL INTENTIONAL INJURIES	8	14.1*	18	10.5	29	53.6	75	46.8	43	20.1	LEGAL INTERVENTION (Y35,Y89.0)	0	0.0	0	0.0	0	0.0	0	0.0	0	0.0	UNDETERMINED INTENT (Y10-Y34,Y87.2,Y89.9)											DISCHARGE OF FIREARMS, UNKNOWN INTENT (Y22-Y24)	0	0.0	1	0.6*	0	0.0	0	0.0	0	0.0	OTHER UNDETERMINED INTENT (Y10-Y21,Y25-Y34,Y87.2)	1	1.8*	2	1.2*	1	1.8*	3	1.9*	3	1.4*	TOTAL UNDETERMINED INTENT	0	0.0	0	0.0	1	1.8*	2	1.2*	1	0.5*	COMPLICATIONS OF MEDICAL CARE (Y40-Y84,Y88)											TOTAL DEATHS	24	42.3	76	44.1	64	118.4	169	105.3	185	86.4										514	80.0																																																																																																																																																																																																																																																																																																																															
ASSAULT (U01-U02,X85-Y09,Y87.1)											ASSAULT BY DISCHARGE OF FIREARMS (U01.4,X93-X96)	1	1.8*	7	4.1*	6	11.1*	18	11.2	7	3.3*	ASSAULT BY OTHER AND UNSPECIFIED MEANS (U01.0-U01.3,U01.5-U01.9,U02,X85-X93,X96-Y09,Y87.1)	2	3.5*	3	1.7*	1	1.8*	2	1.2*	8	3.7*	TOTAL ASSAULT	3	5.3*	10	5.8	7	12.9*	20	12.5	15	7.0	TOTAL INTENTIONAL INJURIES	8	14.1*	18	10.5	29	53.6	75	46.8	43	20.1	LEGAL INTERVENTION (Y35,Y89.0)	0	0.0	0	0.0	0	0.0	0	0.0	0	0.0	UNDETERMINED INTENT (Y10-Y34,Y87.2,Y89.9)											DISCHARGE OF FIREARMS, UNKNOWN INTENT (Y22-Y24)	0	0.0	1	0.6*	0	0.0	0	0.0	0	0.0	OTHER UNDETERMINED INTENT (Y10-Y21,Y25-Y34,Y87.2)	1	1.8*	2	1.2*	1	1.8*	3	1.9*	3	1.4*	TOTAL UNDETERMINED INTENT	0	0.0	0	0.0	1	1.8*	2	1.2*	1	0.5*	COMPLICATIONS OF MEDICAL CARE (Y40-Y84,Y88)											TOTAL DEATHS	24	42.3	76	44.1	64	118.4	169	105.3	185	86.4										514	80.0																																																																																																																																																																																																																																																																																																																																										
ASSAULT BY DISCHARGE OF FIREARMS (U01.4,X93-X96)	1	1.8*	7	4.1*	6	11.1*	18	11.2	7	3.3*	ASSAULT BY OTHER AND UNSPECIFIED MEANS (U01.0-U01.3,U01.5-U01.9,U02,X85-X93,X96-Y09,Y87.1)	2	3.5*	3	1.7*	1	1.8*	2	1.2*	8	3.7*	TOTAL ASSAULT	3	5.3*	10	5.8	7	12.9*	20	12.5	15	7.0	TOTAL INTENTIONAL INJURIES	8	14.1*	18	10.5	29	53.6	75	46.8	43	20.1	LEGAL INTERVENTION (Y35,Y89.0)	0	0.0	0	0.0	0	0.0	0	0.0	0	0.0	UNDETERMINED INTENT (Y10-Y34,Y87.2,Y89.9)											DISCHARGE OF FIREARMS, UNKNOWN INTENT (Y22-Y24)	0	0.0	1	0.6*	0	0.0	0	0.0	0	0.0	OTHER UNDETERMINED INTENT (Y10-Y21,Y25-Y34,Y87.2)	1	1.8*	2	1.2*	1	1.8*	3	1.9*	3	1.4*	TOTAL UNDETERMINED INTENT	0	0.0	0	0.0	1	1.8*	2	1.2*	1	0.5*	COMPLICATIONS OF MEDICAL CARE (Y40-Y84,Y88)											TOTAL DEATHS	24	42.3	76	44.1	64	118.4	169	105.3	185	86.4										514	80.0																																																																																																																																																																																																																																																																																																																																																					
ASSAULT BY OTHER AND UNSPECIFIED MEANS (U01.0-U01.3,U01.5-U01.9,U02,X85-X93,X96-Y09,Y87.1)	2	3.5*	3	1.7*	1	1.8*	2	1.2*	8	3.7*	TOTAL ASSAULT	3	5.3*	10	5.8	7	12.9*	20	12.5	15	7.0	TOTAL INTENTIONAL INJURIES	8	14.1*	18	10.5	29	53.6	75	46.8	43	20.1	LEGAL INTERVENTION (Y35,Y89.0)	0	0.0	0	0.0	0	0.0	0	0.0	0	0.0	UNDETERMINED INTENT (Y10-Y34,Y87.2,Y89.9)											DISCHARGE OF FIREARMS, UNKNOWN INTENT (Y22-Y24)	0	0.0	1	0.6*	0	0.0	0	0.0	0	0.0	OTHER UNDETERMINED INTENT (Y10-Y21,Y25-Y34,Y87.2)	1	1.8*	2	1.2*	1	1.8*	3	1.9*	3	1.4*	TOTAL UNDETERMINED INTENT	0	0.0	0	0.0	1	1.8*	2	1.2*	1	0.5*	COMPLICATIONS OF MEDICAL CARE (Y40-Y84,Y88)											TOTAL DEATHS	24	42.3	76	44.1	64	118.4	169	105.3	185	86.4										514	80.0																																																																																																																																																																																																																																																																																																																																																																
TOTAL ASSAULT	3	5.3*	10	5.8	7	12.9*	20	12.5	15	7.0	TOTAL INTENTIONAL INJURIES	8	14.1*	18	10.5	29	53.6	75	46.8	43	20.1	LEGAL INTERVENTION (Y35,Y89.0)	0	0.0	0	0.0	0	0.0	0	0.0	0	0.0	UNDETERMINED INTENT (Y10-Y34,Y87.2,Y89.9)											DISCHARGE OF FIREARMS, UNKNOWN INTENT (Y22-Y24)	0	0.0	1	0.6*	0	0.0	0	0.0	0	0.0	OTHER UNDETERMINED INTENT (Y10-Y21,Y25-Y34,Y87.2)	1	1.8*	2	1.2*	1	1.8*	3	1.9*	3	1.4*	TOTAL UNDETERMINED INTENT	0	0.0	0	0.0	1	1.8*	2	1.2*	1	0.5*	COMPLICATIONS OF MEDICAL CARE (Y40-Y84,Y88)											TOTAL DEATHS	24	42.3	76	44.1	64	118.4	169	105.3	185	86.4										514	80.0																																																																																																																																																																																																																																																																																																																																																																											
TOTAL INTENTIONAL INJURIES	8	14.1*	18	10.5	29	53.6	75	46.8	43	20.1	LEGAL INTERVENTION (Y35,Y89.0)	0	0.0	0	0.0	0	0.0	0	0.0	0	0.0	UNDETERMINED INTENT (Y10-Y34,Y87.2,Y89.9)											DISCHARGE OF FIREARMS, UNKNOWN INTENT (Y22-Y24)	0	0.0	1	0.6*	0	0.0	0	0.0	0	0.0	OTHER UNDETERMINED INTENT (Y10-Y21,Y25-Y34,Y87.2)	1	1.8*	2	1.2*	1	1.8*	3	1.9*	3	1.4*	TOTAL UNDETERMINED INTENT	0	0.0	0	0.0	1	1.8*	2	1.2*	1	0.5*	COMPLICATIONS OF MEDICAL CARE (Y40-Y84,Y88)											TOTAL DEATHS	24	42.3	76	44.1	64	118.4	169	105.3	185	86.4										514	80.0																																																																																																																																																																																																																																																																																																																																																																																						
LEGAL INTERVENTION (Y35,Y89.0)	0	0.0	0	0.0	0	0.0	0	0.0	0	0.0	UNDETERMINED INTENT (Y10-Y34,Y87.2,Y89.9)											DISCHARGE OF FIREARMS, UNKNOWN INTENT (Y22-Y24)	0	0.0	1	0.6*	0	0.0	0	0.0	0	0.0	OTHER UNDETERMINED INTENT (Y10-Y21,Y25-Y34,Y87.2)	1	1.8*	2	1.2*	1	1.8*	3	1.9*	3	1.4*	TOTAL UNDETERMINED INTENT	0	0.0	0	0.0	1	1.8*	2	1.2*	1	0.5*	COMPLICATIONS OF MEDICAL CARE (Y40-Y84,Y88)											TOTAL DEATHS	24	42.3	76	44.1	64	118.4	169	105.3	185	86.4										514	80.0																																																																																																																																																																																																																																																																																																																																																																																																	
UNDETERMINED INTENT (Y10-Y34,Y87.2,Y89.9)											DISCHARGE OF FIREARMS, UNKNOWN INTENT (Y22-Y24)	0	0.0	1	0.6*	0	0.0	0	0.0	0	0.0	OTHER UNDETERMINED INTENT (Y10-Y21,Y25-Y34,Y87.2)	1	1.8*	2	1.2*	1	1.8*	3	1.9*	3	1.4*	TOTAL UNDETERMINED INTENT	0	0.0	0	0.0	1	1.8*	2	1.2*	1	0.5*	COMPLICATIONS OF MEDICAL CARE (Y40-Y84,Y88)											TOTAL DEATHS	24	42.3	76	44.1	64	118.4	169	105.3	185	86.4										514	80.0																																																																																																																																																																																																																																																																																																																																																																																																												
DISCHARGE OF FIREARMS, UNKNOWN INTENT (Y22-Y24)	0	0.0	1	0.6*	0	0.0	0	0.0	0	0.0	OTHER UNDETERMINED INTENT (Y10-Y21,Y25-Y34,Y87.2)	1	1.8*	2	1.2*	1	1.8*	3	1.9*	3	1.4*	TOTAL UNDETERMINED INTENT	0	0.0	0	0.0	1	1.8*	2	1.2*	1	0.5*	COMPLICATIONS OF MEDICAL CARE (Y40-Y84,Y88)											TOTAL DEATHS	24	42.3	76	44.1	64	118.4	169	105.3	185	86.4										514	80.0																																																																																																																																																																																																																																																																																																																																																																																																																							
OTHER UNDETERMINED INTENT (Y10-Y21,Y25-Y34,Y87.2)	1	1.8*	2	1.2*	1	1.8*	3	1.9*	3	1.4*	TOTAL UNDETERMINED INTENT	0	0.0	0	0.0	1	1.8*	2	1.2*	1	0.5*	COMPLICATIONS OF MEDICAL CARE (Y40-Y84,Y88)											TOTAL DEATHS	24	42.3	76	44.1	64	118.4	169	105.3	185	86.4										514	80.0																																																																																																																																																																																																																																																																																																																																																																																																																																		
TOTAL UNDETERMINED INTENT	0	0.0	0	0.0	1	1.8*	2	1.2*	1	0.5*	COMPLICATIONS OF MEDICAL CARE (Y40-Y84,Y88)											TOTAL DEATHS	24	42.3	76	44.1	64	118.4	169	105.3	185	86.4										514	80.0																																																																																																																																																																																																																																																																																																																																																																																																																																													
COMPLICATIONS OF MEDICAL CARE (Y40-Y84,Y88)											TOTAL DEATHS	24	42.3	76	44.1	64	118.4	169	105.3	185	86.4										514	80.0																																																																																																																																																																																																																																																																																																																																																																																																																																																								
TOTAL DEATHS	24	42.3	76	44.1	64	118.4	169	105.3	185	86.4										514	80.0																																																																																																																																																																																																																																																																																																																																																																																																																																																																			
									514	80.0																																																																																																																																																																																																																																																																																																																																																																																																																																																																														

<sup>1</sup> Rates are per 100,000 population ages 0-19.  
<sup>2</sup> R00-R94, R96-R99, D65-E07, E15-E34, E65-F99, G04-G12, G23-G25, G31-H69, K00-K22, K29-K31, K50-K66, K71-K72, K75-K76, K83-M89, N13.0-N13.5, N13.7-N13.9, N14, N15.0, N15.8-N15.9, N20-N23, N28-N39, N41-N64, N80-N98  
<sup>3</sup> V02-V04, V09.0, V09.2, V12-V14, V19.0-V19.2, V19.4-V19.6, V20-V79, V80.3-V80.5, V81.0-V81.1, V82.0-V82.1, V83-V86, V87.0-V87.8, V88.0-V88.8, V89.0, V89.2  
<sup>4</sup> V01, V05-V06, V09.1, V09.3-V09.9, V10-V11, V15-V18, V19.3, V19.8-V19.9, V80.0-V80.2, V80.6-V80.9, V81.2-V81.9, V82.2-V82.9, V87.9, V88.9, V89.1, V89.3, V89.9, V98-V99, Y85  
\* Rates based on fewer than 10 occurrences are statistically unreliable and should be used with caution.