

# BIRTHS



*"The Embrace"*  
Copyright Rie Munoz, Ltd.

## INTRODUCTION

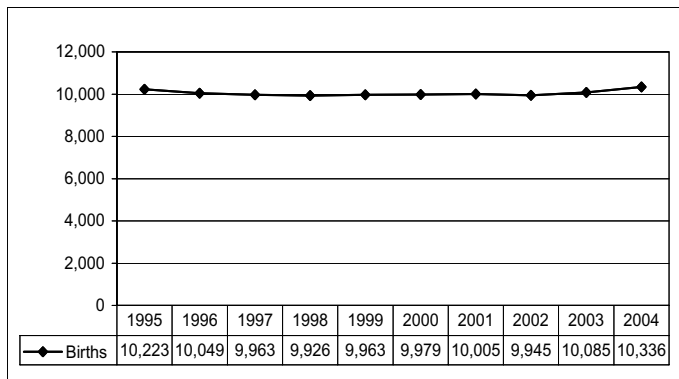
The Alaska birth certificate provides information about each baby born in Alaska, regardless of the mother's residence state. Through a vital statistics cooperative agreement, birth information is also collected for Alaska mothers who have a baby in another state. Thus, the Bureau of Vital Statistics Information System contains records on all births occurring in the state and all births to residents of Alaska.

The birth certificate contains information about the mother, the father, the pregnancy, and the child. Birth information is collected in hospitals and birth centers

from worksheets completed by parents or medical staff, from medical charts, or by a combination of these sources. Midwives and family members who deliver a baby collect the birth information from their records or from a parent and complete the birth certificate.

This chapter reports information from the birth certificate such as pregnancy history, parents' education, prenatal care, mother's health risk behaviors, and birth weight, which can be used to monitor and help improve the health of mothers and children.

FIGURE 1 ALASKA RESIDENT BIRTHS, 1995–2004



There were 10,336 live births to Alaska residents in 2004 (Figure 1). This is an increase of 2.5 percent from the 10,085 births recorded in 2003. Of these births, 5,278 were boys and 5,058 were girls. Of the 10,336 births in 2004, there were 143 sets of twins.

The natural increase in Alaska’s population (the increase of births over deaths) was 7,292 persons, representing a natural increase rate of 11.1 persons per 1,000 population. This is an increase of 4.7 percent over the natural increase rate of 10.6 recorded in 2003.

The 2004 crude birth rate of 15.8 per 1,000 population represents a 1.3 percent increase from the 2003 crude birth rate of 15.6, and a 7.1 percent decrease from the crude birth rate of 17.0 per 1,000 population recorded in 1995. The preliminary 2004 crude birth rate for the United States was 14.0 live births per 1,000 population<sup>1</sup>, which is a decline of 5.4 percent from the rate of 14.8 in 1995.

FIGURE 2 CRUDE BIRTH RATES: U.S. AND ALASKA, 1995–2004

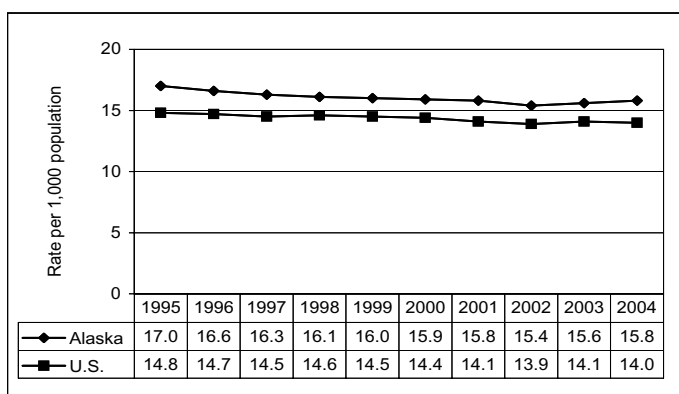
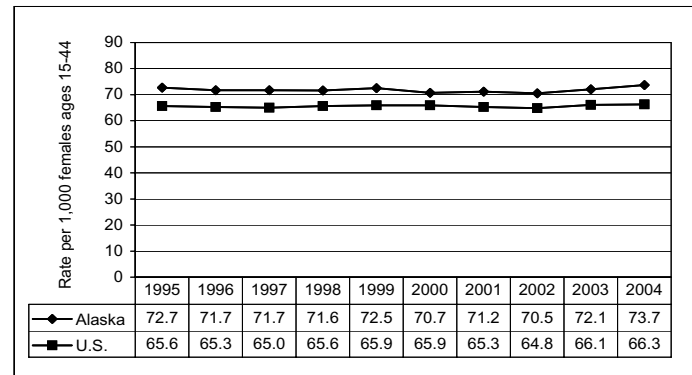


FIGURE 3 FERTILITY RATES: U.S. AND ALASKA, 1995–2004

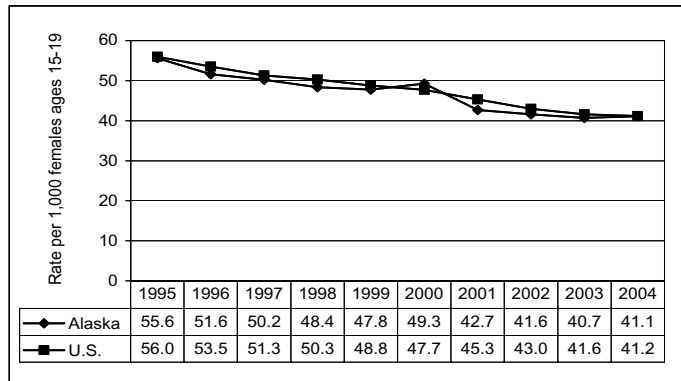


In order to calculate crude birth rates (Figure 2), fertility rates, or any of the other rates used in this report, population estimates must be used. Population estimates are provided by the Department of Labor, Research and Analysis Section, Demographics Unit. Due to the way race information was collected beginning with the 2000 census, previous population estimates are not comparable to current estimates. The Department of Labor has developed smoothed bridge estimates so that population estimates by race made after 2000 are comparable to previous estimates. When reporting rates by race, this report uses smoothed bridge estimates. Please refer to Appendix H for the population estimates used in this report. Furthermore, in order to make a seamless transition from 1990s population estimates to the 2000 Census, the Department of Labor has revised population estimates produced during the 1990s.

The fertility rate (Figure 3) is a more meaningful measure of behavioral patterns than the crude birth rate since it is a measure of the number of births compared to the number of women of usual child-bearing age (15–44 years). The 2004 fertility rate for Alaska was 73.7 births per 1,000 women, representing a 2.2 percent increase from the 2003 fertility rate of 72.1. Alaska’s fertility rate was 11.2 percent higher than the preliminary U.S. fertility rate of 66.3 in 2004.

<sup>1</sup> National Center for Health Statistics, U.S. Department of Health and Human Services, “Births: Preliminary Data for 2004,” National Vital Statistics Report, Vol. 54, No. 8, December 29, 2005.

FIGURE 4 TEEN BIRTH RATES: U.S. AND ALASKA, 1995–2004



The 2004 teen (ages 15–19) birth rate for Alaska was 41.1, which is nearly identical to the 2004 preliminary U.S. teen birth rate of 41.2 (Figure 4). Alaska’s 2004 teen birth rate reflects an increase of 1.0 percent from the 2003 rate of 40.7. Nevertheless, the teen birth rate in Alaska has declined by over one-quarter (26.1 percent) since 1995.

FIGURE 5 PERCENTAGE OF LOW BIRTH WEIGHT INFANTS: U.S. AND ALASKA, 1995–2004

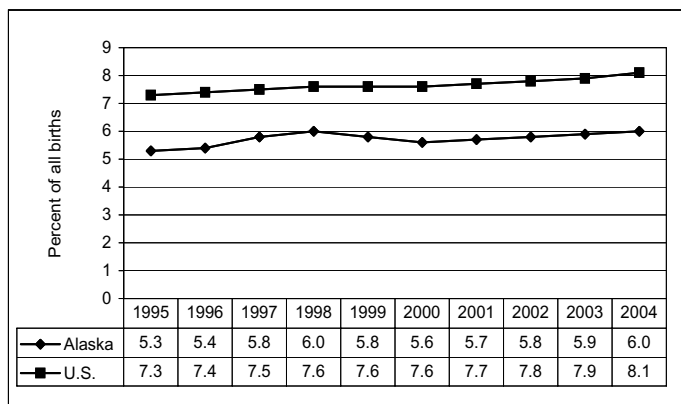
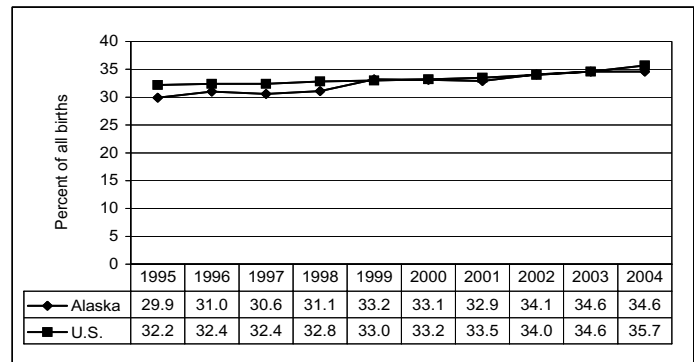


FIGURE 6 PERCENTAGE OF UNWED MOTHERS: U.S. AND ALASKA, 1995–2004



Low birth weight [live births that weigh less than 2,500 grams (5 pounds, 8 ounces)] is an important predictor of infant death. Infants born with low birth weight also are more likely to need extensive medical treatment. The incidence of low birth weight (Figure 5) babies born in Alaska during 2004 was 6.0 percent of total live births, an increase of 1.7 percent from the 2003 Alaska percentage of 5.9 percent. Although the incidence of low birth weight births has been increasing for both Alaska and the U.S. over the last decade, the Alaska low birth weight percentage is 25.9 percent lower than the preliminary U.S. percentage for 2004.

Of the total births to Alaska residents during 2004, 34.6 percent were to unmarried women (Figure 6), the same percentage reported for Alaska in 2003.

The most popular boy’s name in 2004 was Ethan and the most popular girl’s name was Emma. Figure 7 below shows the ten most popular boys’ and girls’ names for the years 1994, 1999, and 2004.

FIGURE 7 MOST POPULAR BOYS’ AND GIRLS’ NAMES: ALASKA, 1994, 1999, AND 2004

RANK	BOYS' NAMES			GIRLS' NAMES		
	1994	1999	2004	1994	1999	2004
1	Michael	Jacob	Ethan	Jessica	Emily	Emma
2	Jacob	Joshua	Joseph	Ashley	Hannah	Madison
3	Tyler	Michael	James	Samantha	Ashley	Hannah
4	Christopher	Matthew	Samuel	Sarah	Sarah	Grace
5	Daniel	Dylan	Tyler	Taylor	Elizabeth	Emily
6	Joshua	Joseph	Jacob	Emily	Jessica	Abigail
7	Matthew	Tyler	Alexander	Brittany	Madison	Olivia
8	John	Alexander	David	Elizabeth	Taylor	Isabella
9	James	Christopher	Dylan	Amanda	Alexis	Alyssa
10	Joseph	John	Joshua	Hannah	Samantha	Sophia

## BIRTHS BY RESIDENCE AND RACE

The following tables of this chapter show annual occurrences of live births to Alaska residents during 2004 and for the three-year period 2002 through 2004.

Annual rates and three-year rates for the state as a whole, its 27 census areas, and 12 Native Regional Corporations are shown by race and residence of the mother. Natality statistics on the mother's age, marital status, education, birth facility, prenatal care, cesarean delivery, pre-term births, and low birth weight are presented.

The table for the statewide totals (Table 1) provides birth statistics for the white, black, Native, and Asian/Pacific Islander races. However, due to the low number of reportable events for some census areas or boroughs, birth outcomes by census area (borough) and Native Regional Corporation are only shown for the two predominant races in Alaska: Native and white.

Also, unknown values are not reported in these tables. Thus, the percentages for certain categories such as mother's age group may not add up to the total number of births.

Since female population estimates for the age groups of 15–17 and 18–19 are not available for individual census areas, fertility rates and teen birth rates cannot be calculated for these tables (Table 2 and Table 3). Furthermore, due to the way race information was collected in the Federal 2000 Census, population estimates by race beginning in 2000 are not comparable to previous population estimates. The Alaska Department of Labor has developed bridge estimates so that the federal population estimates by race in 2000 and later years will be comparable to previous years. Bridge estimates by census area by race prior to 2003 are not available. When complete bridge estimates by census area by race are published, the online Annual Report will be updated. The following Web address is for the online Annual Report:

[www.hss.state.ak.us/dph/bvs/data/default.htm](http://www.hss.state.ak.us/dph/bvs/data/default.htm).

**TABLE 1 SELECTED BIRTH STATISTICS REPORTED BY MOTHER'S RACE:  
ALASKA, 2004 AND 2002-2004**

	TOTAL				WHITE				NATIVE			
	2004 NUMBER	2004 RATE	2002-2004 NUMBER	2002-2004 RATE	2004 NUMBER	2004 RATE	2002-2004 NUMBER	2002-2004 RATE	2004 NUMBER	2004 RATE	2002-2004 NUMBER	2002-2004 RATE
<b>BIRTH RATES</b>												
CRUDE BIRTH RATE (1)	10,336	15.8	30,366	15.6	6,480	13.9	19,135	13.9	2,577	22.3	7,436	21.7
TEEN BIRTH RATE (2)												
15-17	286	17.7	923	19.1	114	10.7	374	11.7	130	35.7	416	39.7
18-19	790	78.9	2,270	77.5	389	58.1	1,150	59.4	320	150.3	865	135.2
15-19	1,076	41.1	3,193	41.1	503	29.0	1,524	29.7	450	77.9	1,281	75.5
FERTILITY RATE (3)	10,336	73.7	30,366	72.1	6,480	66.1	19,135	65.2	2,577	101.3	7,436	98.1
<b>BIRTHS</b>												
	2004 NUMBER	2004 %	2002-2004 NUMBER	2002-2004 %	2004 NUMBER	2004 %	2002-2004 NUMBER	2002-2004 %	2004 NUMBER	2004 %	2002-2004 NUMBER	2002-2004 %
IN STATE	10,242	100.0	30,056	100.0	6,407	62.6	18,896	62.9	2,573	25.1	7,421	24.7
TO RESIDENTS	10,336	100.0	30,366	100.0	6,480	62.7	19,135	63.0	2,577	24.9	7,436	24.5
<b>FACILITY</b>												
HOSPITAL	9,736	94.2	28,626	94.3	5,959	92.0	17,620	92.1	2,540	98.6	7,335	98.6
BIRTHING CENTER	307	3.0	862	2.8	279	4.3	794	4.1	17	0.7	37	0.5
HOME	183	1.8	531	1.7	164	2.5	467	2.4	7	0.3	30	0.4
CLINIC	16	0.2	37	0.1	5	0.1	15	0.1	9	0.3	19	0.3
OUTSIDE ALASKA	94	0.9	310	1.0	73	1.1	239	1.2	4	0.2	15	0.2
<b>MOTHER CHARACTERISTICS</b>												
<b>AGE GROUP</b>												
<15	9	0.1	40	0.1	3	0.0	14	0.1	5	0.2	20	0.3
15-19	1,076	10.4	3,193	10.5	503	7.8	1,524	8.0	450	17.5	1,281	17.2
20-24	3,027	29.3	8,762	28.9	1,766	27.3	5,198	27.2	874	33.9	2,442	32.8
25-29	2,729	26.4	7,998	26.4	1,792	27.7	5,200	27.2	600	23.3	1,817	24.4
30-34	2,114	20.5	6,248	20.6	1,480	22.8	4,376	22.9	395	15.3	1,111	14.9
35-39	1,096	10.6	3,192	10.5	747	11.5	2,167	11.3	198	7.7	605	8.1
40-44	259	2.5	851	2.8	171	2.6	595	3.1	52	2.0	150	2.0
45+	24	0.2	58	0.2	17	0.3	44	0.2	3	0.1	9	0.1
REPORTED DRINKING	200	2.0	654	2.2	81	1.3	269	1.4	108	4.2	353	4.8
REPORTED SMOKING	1,625	15.9	5,099	17.0	741	11.5	2,372	12.5	790	30.8	2,425	32.8
UNWED	3,575	34.6	10,434	34.4	1,500	23.2	4,508	23.6	1,633	63.4	4,603	61.9
<b>EDUCATION</b>												
<12 YEARS	1,370	14.1	4,157	14.4	535	8.8	1,739	9.5	687	27.2	1,993	27.4
12 YEARS	4,096	42.3	12,203	42.2	2,220	36.7	6,752	36.9	1,357	53.8	3,950	54.4
12+ YEARS	4,226	43.6	12,543	43.4	3,296	54.5	9,803	53.6	478	19.0	1,319	18.2
<b>PRENATAL CARE</b>												
<b>TRIMESTER CARE BEGAN</b>												
1ST TRIMESTER	7,925	81.1	23,270	80.6	5,295	85.7	15,569	84.8	1,752	71.0	5,055	70.6
3RD TRIMESTER	415	4.2	1,284	4.4	220	3.6	694	3.8	135	5.5	432	6.0
NO PRENATAL CARE	47	0.5	133	0.5	15	0.3	60	0.4	22	0.9	49	0.7
<b>APNCU INDEX</b>												
ADEQUATE+	2,189	24.1	6,679	24.8	1,608	28.5	4,780	28.3	324	13.3	1,116	15.9
ADEQUATE	3,576	39.3	10,719	39.8	2,488	44.1	7,440	44.1	699	28.6	2,090	29.7
INTERMEDIATE	1,796	19.7	5,059	18.8	926	16.4	2,711	16.1	675	27.7	1,799	25.6
INADEQUATE	1,540	16.9	4,495	16.7	614	10.9	1,958	11.6	742	30.4	2,035	28.9
<b>C-SECTION BIRTHS</b>	2,164	21.1	6,252	20.8	1,556	24.2	4,473	23.6	329	12.8	881	11.9
<b>PRE-TERM BIRTHS</b>	1,082	10.5	3,160	10.5	628	9.7	1,780	9.3	298	11.6	903	12.2
<b>LOW BIRTHWEIGHT</b>	617	6.0	1,787	5.9	355	5.5	1,028	5.4	157	6.1	448	6.0

Continued →

Note: Unknown responses are excluded from the denominator when calculating percentages.

(1) Crude birth rate per 1,000 population.

(2) Teen birth rate per 1,000 female population ages 15-17, 18-19, or 15-19.

(3) Fertility rate per 1,000 female population ages 15-44.

**TABLE 1**                    **SELECTED BIRTH STATISTICS REPORTED BY MOTHER'S RACE:**  
**ALASKA, 2004 AND 2002-2004** (Continued)

	TOTAL				BLACK				ASIAN/PI			
	2004 NUMBER	2004 RATE	2002-2004 NUMBER	2002-2004 RATE	2004 NUMBER	2004 RATE	2002-2004 NUMBER	2002-2004 RATE	2004 NUMBER	2004 RATE	2002-2004 NUMBER	2002-2004 RATE
<b>BIRTH RATES</b>												
CRUDE BIRTH RATE (1)	10,336	15.8	30,366	15.6	384	11.7	1,204	11.9	755	17.7	2,142	16.8
TEEN BIRTH RATE (2)												
15-17	286	17.7	923	19.1	12	17.8	45	21.8	28	23.0	78	21.3
18-19	790	78.9	2,270	77.5	29	73.2	110	89.2	45	57.0	115	49.9
15-19	1,076	41.1	3,193	41.1	41	38.3	155	47.0	73	36.4	193	32.3
FERTILITY RATE (3)	10,336	73.7	30,366	72.1	384	61.6	1,204	62.0	755	71.9	2,142	66.1
	TOTAL				BLACK				ASIAN/PI			
	2004 NUMBER	2004 %	2002-2004 NUMBER	2002-2004 %	2004 NUMBER	2004 %	2002-2004 NUMBER	2002-2004 %	2004 NUMBER	2004 %	2002-2004 NUMBER	2002-2004 %
<b>BIRTHS</b>												
IN STATE	10,242	100.0	30,056	100.0	380	3.7	1,196	4.0	752	7.3	2,127	7.1
TO RESIDENTS	10,336	100.0	30,366	100.0	384	3.7	1,204	4.0	755	7.3	2,142	7.1
<b>FACILITY</b>												
HOSPITAL	9,736	94.2	28,626	94.3	377	98.2	1,186	98.5	738	97.7	2,091	97.6
BIRTHING CENTER	307	3.0	862	2.8	2	0.5	5	0.4	8	1.1	19	0.9
HOME	183	1.8	531	1.7	1	0.3	5	0.4	5	0.7	15	0.7
CLINIC	16	0.2	37	0.1	0	0.0	0	0.0	1	0.1	2	0.1
OUTSIDE ALASKA	94	0.9	310	1.0	4	1.0	8	0.7	3	0.4	15	0.7
<b>MOTHER CHARACTERISTICS</b>												
AGE GROUP												
<15	9	0.1	40	0.1	0	0.0	1	0.1	1	0.1	5	0.2
15-19	1,076	10.4	3,193	10.5	41	10.7	155	12.9	73	9.7	193	9.0
20-24	3,027	29.3	8,762	28.9	155	40.4	475	39.5	190	25.2	536	25.0
25-29	2,729	26.4	7,998	26.4	101	26.3	286	23.8	201	26.6	582	27.2
30-34	2,114	20.5	6,248	20.6	53	13.8	180	15.0	170	22.5	498	23.3
35-39	1,096	10.6	3,192	10.5	30	7.8	92	7.7	92	12.2	246	11.5
40-44	259	2.5	851	2.8	4	1.0	13	1.1	24	3.2	76	3.5
45+	24	0.2	58	0.2	0	0.0	0	0.0	4	0.5	5	0.2
REPORTED DRINKING	200	2.0	654	2.2	4	1.1	10	0.8	6	0.8	18	0.9
REPORTED SMOKING	1,625	15.9	5,099	17.0	22	5.8	89	7.5	59	7.9	172	8.2
UNWED	3,575	34.6	10,434	34.4	156	40.6	523	43.6	240	31.8	647	30.3
EDUCATION												
<12 YEARS	1,370	14.1	4,157	14.4	42	11.7	134	11.7	87	12.9	250	12.7
12 YEARS	4,096	42.3	12,203	42.2	168	46.9	542	47.3	314	46.6	856	43.5
12+ YEARS	4,226	43.6	12,543	43.4	148	41.3	470	41.0	273	40.5	863	43.8
<b>PRENATAL CARE</b>												
TRIMESTER CARE BEGAN												
1ST TRIMESTER	7,925	81.1	23,270	80.6	299	85.9	928	84.2	501	73.8	1,462	75.5
3RD TRIMESTER	415	4.2	1,284	4.4	9	2.6	41	3.7	44	6.5	105	5.4
NO PRENATAL CARE	47	0.5	133	0.5	2	0.7	10	1.0	6	1.0	10	0.6
APNCU INDEX												
ADEQUATE+	2,189	24.1	6,679	24.8	85	28.1	287	29.3	147	23.7	428	24.7
ADEQUATE	3,576	39.3	10,719	39.8	118	38.9	389	39.7	234	37.7	673	38.9
INTERMEDIATE	1,796	19.7	5,059	18.8	60	19.8	175	17.8	114	18.4	308	17.8
INADEQUATE	1,540	16.9	4,495	16.7	40	13.2	130	13.3	126	20.3	321	18.6
<b>C-SECTION BIRTHS</b>	2,164	21.1	6,252	20.8	101	26.4	300	25.1	150	20.0	493	23.2
<b>PRE-TERM BIRTHS</b>	1,082	10.5	3,160	10.5	54	14.2	173	14.5	82	10.9	243	11.4
<b>LOW BIRTHWEIGHT</b>	617	6.0	1,787	5.9	40	10.4	124	10.3	51	6.8	146	6.8

Note: Unknown responses are excluded from the denominator when calculating percentages.

(1) Crude birth rate per 1,000 population.

(2) Teen birth rate per 1,000 female population ages 15-17, 18-19, or 15-19.

(3) Fertility rate per 1,000 female population ages 15-44.

**TABLE 2 SELECTED BIRTH STATISTICS REPORTED BY MOTHER'S RACE:  
2004 AND 2002-2004  
ALEUTIANS EAST BOROUGH**

	TOTAL				WHITE				NATIVE			
	2004 NUMBER	2004 RATE*	2002-2004 NUMBER	2002-2004 RATE*	2004 NUMBER	2004 RATE*	2002-2004 NUMBER	2002-2004 RATE*	2004 NUMBER	2004 RATE*	2002-2004 NUMBER	2002-2004 RATE*
<b>BIRTH RATES</b>												
CRUDE BIRTH RATE (1)	15	5.7	45	5.6	5	6.0 *	9		8	9.2 *	30	
TEEN BIRTH RATE (2)												
15-17	0		0		0		0		0		0	
18-19	0		2		0		0		0		2	
15-19	0	0.0	2	13.0 *	0	0.0	0		0	0.0	2	
FERTILITY RATE (3)	15	32.0	45	30.7	5	41.0 *	9		8	42.3 *	30	
	TOTAL				WHITE				NATIVE			
	2004 NUMBER	2004 %	2002-2004 NUMBER	2002-2004 %	2004 NUMBER	2004 %	2002-2004 NUMBER	2002-2004 %	2004 NUMBER	2004 %	2002-2004 NUMBER	2002-2004 %
<b>BIRTHS</b>												
WITHIN AREA	0	0.0	0	0.0	0	0.0	0	0.0	0	0.0	0	0.0
TO RESIDENTS	15	100.0	45	100.0	5	33.3	9	20.0	8	53.3	30	66.7
<b>FACILITY</b>												
HOSPITAL	15	100.0	42	93.3	5	100.0	8	88.9	8	100.0	30	100.0
BIRTHING CENTER	0	0.0	0	0.0	0	0.0	0	0.0	0	0.0	0	0.0
HOME	0	0.0	0	0.0	0	0.0	0	0.0	0	0.0	0	0.0
OTHER	0	0.0	0	0.0	0	0.0	0	0.0	0	0.0	0	0.0
OUTSIDE ALASKA	0	0.0	3	6.7	0	0.0	1	11.1	0	0.0	0	0.0
<b>MOTHER CHARACTERISTICS</b>												
AGE GROUP												
<15	0	0.0	0	0.0	0	0.0	0	0.0	0	0.0	0	0.0
15-19	0	0.0	2	4.4	0	0.0	0	0.0	0	0.0	2	6.7
20-24	6	40.0	16	35.6	1	20.0	2	22.2	5	62.5	13	43.3
25-29	2	13.3	10	22.2	0	0.0	0	0.0	2	25.0	8	26.7
30-34	4	26.7	9	20.0	4	80.0	5	55.6	0	0.0	3	10.0
35-39	3	20.0	7	15.6	0	0.0	2	22.2	1	12.5	3	10.0
40-44	0	0.0	1	2.2	0	0.0	0	0.0	0	0.0	1	3.3
45+	0	0.0	0	0.0	0	0.0	0	0.0	0	0.0	0	0.0
REPORTED DRINKING	0	0.0	1	2.4	0	0.0	0	0.0	0	0.0	1	3.3
REPORTED SMOKING	4	26.7	12	27.3	1	20.0	1	11.1	3	37.5	10	33.3
UNWED	9	60.0	24	54.5	2	40.0	5	55.6	6	75.0	15	50.0
EDUCATION												
<12 YEARS	4	28.6	6	14.0	1	25.0	2	28.6	2	25.0	2	6.7
12 YEARS	7	50.0	30	69.8	2	50.0	3	42.9	4	50.0	23	76.7
12+ YEARS	3	21.4	7	16.3	1	25.0	2	28.6	2	25.0	5	16.7
<b>PRENATAL CARE</b>												
TRIMESTER CARE BEGAN												
1ST TRIMESTER	10	76.9	33	78.6	4	100.0	6	85.7	6	75.0	26	86.7
3RD TRIMESTER	1	7.7	1	2.4	0	0.0	0	0.0	1	12.5	1	3.3
NO PRENATAL CARE	0	0.0	0	0.0	0	0.0	0	0.0	0	0.0	0	0.0
APNCU INDEX												
ADEQUATE+	7	63.6	25	64.1	0	0.0	2	50.0	7	87.5	23	76.7
ADEQUATE	2	18.2	9	23.1	1	50.0	1	25.0	0	0.0	5	16.7
INTERMEDIATE	1	9.1	3	7.7	1	50.0	1	25.0	0	0.0	0	0.0
INADEQUATE	1	9.1	2	5.1	0	0.0	0	0.0	1	12.5	2	6.7
<b>C-SECTION BIRTHS</b>	1	6.7	6	13.6	0	0.0	1	11.1	1	12.5	4	13.3
<b>PRE-TERM BIRTHS</b>	1	6.7	3	6.7	0	0.0	0	0.0	0	0.0	2	6.7
<b>LOW BIRTHWEIGHT</b>	2	13.3	2	4.4	0	0.0	0	0.0	1	12.5	1	3.3

Note: Unknown responses are excluded from the denominator when calculating percentages.

(1) Crude birth rate per 1,000 population.

(2) Teen birth rate per 1,000 female population ages 15-17, 18-19, or 15-19. Population estimates by census area for 15-17 and 18-19 are not available for 2003 or 2004. Therefore, rates for these age groups are not reported.

(3) Fertility rate per 1,000 female population ages 15-44. Population estimates by race by census area are only available for 2003 and 2004. Therefore, three year rates are not reported.

\* Rates based on fewer than 10 occurrences are statistically unreliable and should be used with caution.

\*\* Data suppressed for confidentiality concerns if total births to residents, by race, is less than five observations.

**TABLE 2 SELECTED BIRTH STATISTICS REPORTED BY MOTHER'S RACE:  
2004 AND 2002-2004  
ALEUTIANS WEST CENSUS AREA**

	TOTAL				WHITE				NATIVE			
	2004 NUMBER	2004 RATE*	2002-2004 NUMBER	2002-2004 RATE*	2004 NUMBER	2004 RATE*	2002-2004 NUMBER	2002-2004 RATE*	2004 NUMBER	2004 RATE*	2002-2004 NUMBER	2002-2004 RATE*
<b>BIRTH RATES</b>												
CRUDE BIRTH RATE (1)	42	8.0	111	7.1	19	8.5	55		11	11.9	31	
<b>TEEN BIRTH RATE (2)</b>												
15-17	1		1		0		0		0		0	
18-19	2		6		0		1		2		5	
15-19	3	30.3*	7	23.0*	0	0.0	1		2	54.1*	5	
FERTILITY RATE (3)	42	45.1	111	39.2	19	50.8	55		11	62.5	31	

	TOTAL				WHITE				NATIVE			
	2004 NUMBER	2004 %	2002-2004 NUMBER	2002-2004 %	2004 NUMBER	2004 %	2002-2004 NUMBER	2002-2004 %	2004 NUMBER	2004 %	2002-2004 NUMBER	2002-2004 %
<b>BIRTHS</b>												
WITHIN AREA	1	100.0	1	100.0	0	0.0	0	0.0	0	0.0	0	0.0
TO RESIDENTS	42	100.0	111	100.0	19	45.2	55	49.5	11	26.2	31	27.9
<b>FACILITY</b>												
HOSPITAL	27	64.3	72	64.9	7	36.8	24	43.6	11	100.0	31	100.0
BIRTHING CENTER	1	2.4	3	2.7	1	5.3	3	5.5	0	0.0	0	0.0
HOME	1	2.4	1	0.9	1	5.3	1	1.8	0	0.0	0	0.0
OTHER	1	2.4	1	0.9	0	0.0	0	0.0	0	0.0	0	0.0
OUTSIDE ALASKA	12	28.6	34	30.6	10	52.6	27	49.1	0	0.0	0	0.0
<b>MOTHER CHARACTERISTICS</b>												
<b>AGE GROUP</b>												
<15	0	0.0	0	0.0	0	0.0	0	0.0	0	0.0	0	0.0
15-19	3	7.3	7	6.4	0	0.0	1	1.8	2	18.2	5	16.1
20-24	9	22.0	25	22.7	3	15.8	11	20.0	4	36.4	10	32.3
25-29	10	24.4	25	22.7	4	21.1	12	21.8	2	18.2	4	12.9
30-34	14	34.1	35	31.8	8	42.1	20	36.4	2	18.2	6	19.4
35-39	3	7.3	14	12.7	2	10.5	8	14.5	1	9.1	5	16.1
40-44	2	4.9	4	3.6	2	10.5	3	5.5	0	0.0	1	3.2
45+	0	0.0	0	0.0	0	0.0	0	0.0	0	0.0	0	0.0
REPORTED DRINKING	2	6.7	8	9.4	0	0.0	2	5.6	1	9.1	5	16.1
REPORTED SMOKING	4	10.5	15	14.4	1	5.6	3	5.7	3	27.3	12	38.7
UNWED	14	35.0	34	32.7	2	10.5	9	17.3	7	63.6	18	58.1
<b>EDUCATION</b>												
<12 YEARS	0	0.0	9	8.8	0	0.0	1	2.0	0	0.0	5	16.7
12 YEARS	20	54.1	53	52.0	6	35.3	24	47.1	8	80.0	21	70.0
12+ YEARS	17	45.9	40	39.2	11	64.7	26	51.0	2	20.0	4	13.3
<b>PRENATAL CARE</b>												
<b>TRIMESTER CARE BEGAN</b>												
1ST TRIMESTER	29	80.6	83	83.8	14	82.4	39	81.3	10	90.9	29	93.5
3RD TRIMESTER	2	5.6	4	4.0	1	5.9	3	6.3	0	0.0	0	0.0
NO PRENATAL CARE	1	2.9	1	1.0	0	0.0	0	0.0	0	0.0	0	0.0
<b>APNCU INDEX</b>												
ADEQUATE+	10	28.6	25	26.0	4	25.0	6	13.0	5	45.5	17	54.8
ADEQUATE	16	45.7	39	40.6	8	50.0	23	50.0	5	45.5	11	35.5
INTERMEDIATE	3	8.6	17	17.7	2	12.5	9	19.6	0	0.0	1	3.2
INADEQUATE	6	17.1	15	15.6	2	12.5	8	17.4	1	9.1	2	6.5
<b>C-SECTION BIRTHS</b>	9	23.7	23	22.3	5	29.4	16	32.0	1	9.1	2	6.5
<b>PRE-TERM BIRTHS</b>	4	9.8	8	7.3	1	5.3	2	3.6	1	9.1	3	9.7
<b>LOW BIRTHWEIGHT</b>	3	7.3	6	5.5	0	0.0	1	1.8	2	18.2	3	9.7

Note: Unknown responses are excluded from the denominator when calculating percentages.

(1) Crude birth rate per 1,000 population.

(2) Teen birth rate per 1,000 female population ages 15-17, 18-19, or 15-19. Population estimates by census area for 15-17 and 18-19 are not available for 2003 or 2004. Therefore, rates for these age groups are not reported.

(3) Fertility rate per 1,000 female population ages 15-44. Population estimates by race by census area are only available for 2003 and 2004. Therefore, three year rates are not reported.

\* Rates based on fewer than 10 occurrences are statistically unreliable and should be used with caution.

\*\* Data suppressed for confidentiality concerns if total births to residents, by race, is less than five observations.



**TABLE 2 SELECTED BIRTH STATISTICS REPORTED BY MOTHER'S RACE:  
2004 AND 2002-2004  
MUNICIPALITY OF ANCHORAGE**

	TOTAL				WHITE				NATIVE			
	2004 NUMBER	2004 RATE*	2002-2004 NUMBER	2002-2004 RATE*	2004 NUMBER	2004 RATE*	2002-2004 NUMBER	2002-2004 RATE*	2004 NUMBER	2004 RATE*	2002-2004 NUMBER	2002-2004 RATE*
<b>BIRTH RATES</b>												
CRUDE BIRTH RATE (1)	4,383	15.8	12,812	15.6	2,924	14.4	8,484		624	23.2	1,855	
TEEN BIRTH RATE (2)												
15-17	106		343		50		147		25		95	
18-19	286		871		146		467		73		215	
15-19	392	37.6	1,214	39.4	196	27.1	614		98	82.3	310	
FERTILITY RATE (3)	4,383	70.2	12,812	68.7	2,924	65.2	8,484		624	88.2	1,855	
	TOTAL				WHITE				NATIVE			
	2004 NUMBER	2004 %	2002-2004 NUMBER	2002-2004 %	2004 NUMBER	2004 %	2002-2004 NUMBER	2002-2004 %	2004 NUMBER	2004 %	2002-2004 NUMBER	2002-2004 %
<b>BIRTHS</b>												
WITHIN AREA	5,605	100.0	16,383	100.0	3,374	60.2	9,841	60.1	1,332	23.8	3,918	23.9
TO RESIDENTS	4,383	100.0	12,812	100.0	2,924	66.7	8,484	66.2	624	14.2	1,855	14.5
<b>FACILITY</b>												
HOSPITAL	4,214	96.1	12,364	96.5	2,772	94.8	8,083	95.3	616	98.7	1,836	99.0
BIRTHING CENTER	79	1.8	209	1.6	74	2.5	195	2.3	2	0.3	7	0.4
HOME	71	1.6	183	1.4	64	2.2	165	1.9	4	0.6	7	0.4
OTHER	0	0.0	0	0.0	0	0.0	0	0.0	0	0.0	0	0.0
OUTSIDE ALASKA	19	0.4	56	0.4	14	0.5	41	0.5	2	0.3	5	0.3
<b>MOTHER CHARACTERISTICS</b>												
AGE GROUP												
<15	4	0.1	13	0.1	1	0.0	2	0.0	2	0.3	5	0.3
15-19	392	8.9	1,214	9.5	196	6.7	614	7.2	98	15.7	310	16.7
20-24	1,217	27.8	3,627	28.3	756	25.9	2,257	26.6	204	32.7	632	34.1
25-29	1,184	27.0	3,319	25.9	804	27.5	2,218	26.2	170	27.2	480	25.9
30-34	959	21.9	2,838	22.2	716	24.5	2,100	24.8	99	15.9	263	14.2
35-39	499	11.4	1,404	11.0	367	12.6	1,009	11.9	34	5.4	123	6.6
40-44	120	2.7	363	2.8	79	2.7	259	3.1	17	2.7	39	2.1
45+	8	0.2	26	0.2	5	0.2	20	0.2	0	0.0	2	0.1
REPORTED DRINKING	72	1.7	253	2.0	49	1.7	149	1.8	17	2.7	83	4.5
REPORTED SMOKING	511	11.8	1,706	13.5	277	9.6	887	10.6	165	26.7	593	32.1
UNWED	1,426	32.6	4,215	33.0	700	24.0	2,062	24.3	390	62.5	1,167	62.9
EDUCATION												
<12 YEARS	516	13.1	1,615	13.4	226	8.7	731	9.2	176	28.6	555	30.3
12 YEARS	1,537	38.9	4,695	39.0	904	34.6	2,828	35.4	273	44.3	825	45.1
12+ YEARS	1,894	48.0	5,722	47.6	1,479	56.7	4,419	55.4	167	27.1	451	24.6
<b>PRENATAL CARE</b>												
TRIMESTER CARE BEGAN												
1ST TRIMESTER	3,464	85.5	10,209	85.2	2,407	88.3	7,063	88.1	499	82.2	1,460	80.4
3RD TRIMESTER	140	3.5	421	3.5	85	3.1	261	3.3	12	2.0	55	3.0
NO PRENATAL CARE	19	0.5	59	0.6	7	0.3	27	0.4	5	0.8	14	0.8
APNCU INDEX												
ADEQUATE+	971	27.5	2,942	27.9	738	32.0	2,157	31.1	54	9.1	261	14.6
ADEQUATE	1,437	40.7	4,563	43.2	1,001	43.4	3,113	44.9	216	36.4	745	41.8
INTERMEDIATE	683	19.4	1,805	17.1	363	15.8	1,050	15.1	207	34.8	454	25.5
INADEQUATE	436	12.4	1,249	11.8	202	8.8	619	8.9	117	19.7	322	18.1
<b>C-SECTION BIRTHS</b>	994	22.8	2,879	22.6	712	24.5	2,051	24.3	86	13.8	220	11.9
<b>PRE-TERM BIRTHS</b>	456	10.5	1,326	10.4	300	10.3	852	10.1	52	8.3	170	9.2
<b>LOW BIRTHWEIGHT</b>	272	6.2	806	6.3	168	5.8	481	5.7	32	5.1	113	6.1

Note: Unknown responses are excluded from the denominator when calculating percentages.

(1) Crude birth rate per 1,000 population.

(2) Teen birth rate per 1,000 female population ages 15-17, 18-19, or 15-19. Population estimates by census area for 15-17 and 18-19 are not available for 2003 or 2004. Therefore, rates for these age groups are not reported.

(3) Fertility rate per 1,000 female population ages 15-44. Population estimates by race by census area are only available for 2003 and 2004. Therefore, three year rates are not reported.

\* Rates based on fewer than 10 occurrences are statistically unreliable and should be used with caution.

\*\* Data suppressed for confidentiality concerns if total births to residents, by race, is less than five observations.

**TABLE 2 SELECTED BIRTH STATISTICS REPORTED BY MOTHER'S RACE:  
2004 AND 2002-2004  
BETHEL CENSUS AREA**

	TOTAL				WHITE				NATIVE			
	2004 NUMBER	2004 RATE*	2002-2004 NUMBER	2002-2004 RATE*	2004 NUMBER	2004 RATE*	2002-2004 NUMBER	2002-2004 RATE*	2004 NUMBER	2004 RATE*	2002-2004 NUMBER	2002-2004 RATE*
<b>BIRTH RATES</b>												
CRUDE BIRTH RATE (1)	423	25.1	1,241	24.8	17	7.0	74		400	28.6	1,153	
<b>TEEN BIRTH RATE (2)</b>												
15-17	19		55		0		1		18		52	
18-19	50		118		1		1		49		117	
15-19	69	87.9	173	74.3	1	12.3 *	2		67	97.7	169	
FERTILITY RATE (3)	423	125.1	1,241	122.6	17	35.6	74		400	141.7	1,153	

	TOTAL				WHITE				NATIVE			
	2004 NUMBER	2004 %	2002-2004 NUMBER	2002-2004 %	2004 NUMBER	2004 %	2002-2004 NUMBER	2002-2004 %	2004 NUMBER	2004 %	2002-2004 NUMBER	2002-2004 %
<b>BIRTHS</b>												
WITHIN AREA	399	100.0	1,112	100.0	4	1.0	20	1.8	393	98.5	1,083	97.4
TO RESIDENTS	423	100.0	1,241	100.0	17	4.0	74	6.0	400	94.6	1,153	92.9
<b>FACILITY</b>												
HOSPITAL	413	97.6	1,221	98.4	14	82.4	66	89.2	394	98.5	1,142	99.0
BIRTHING CENTER	0	0.0	2	0.2	0	0.0	2	2.7	0	0.0	0	0.0
HOME	1	0.2	4	0.3	0	0.0	1	1.4	1	0.3	3	0.3
OTHER	6	1.4	8	0.6	0	0.0	0	0.0	5	1.3	7	0.6
OUTSIDE ALASKA	3	0.7	6	0.5	3	17.6	5	6.8	0	0.0	1	0.1
<b>MOTHER CHARACTERISTICS</b>												
<b>AGE GROUP</b>												
<15	0	0.0	1	0.1	0	0.0	0	0.0	0	0.0	1	0.1
15-19	69	16.3	173	13.9	1	5.9	2	2.7	67	16.8	169	14.7
20-24	129	30.5	391	31.5	1	5.9	11	14.9	127	31.8	376	32.6
25-29	89	21.0	300	24.2	4	23.5	16	21.6	84	21.0	282	24.5
30-34	73	17.3	201	16.2	8	47.1	24	32.4	63	15.8	173	15.0
35-39	49	11.6	132	10.6	2	11.8	13	17.6	46	11.5	117	10.1
40-44	12	2.8	39	3.1	1	5.9	8	10.8	11	2.8	31	2.7
45+	2	0.5	4	0.3	0	0.0	0	0.0	2	0.5	4	0.3
REPORTED DRINKING	21	5.0	58	4.7	0	0.0	1	1.4	21	5.3	57	5.0
REPORTED SMOKING	78	18.7	206	16.7	0	0.0	5	6.8	78	19.8	201	17.6
UNWED	209	49.4	599	48.3	2	11.8	11	14.9	206	51.5	583	50.6
<b>EDUCATION</b>												
<12 YEARS	110	27.0	277	23.0	0	0.0	2	2.9	110	28.5	275	24.5
12 YEARS	239	58.7	757	62.9	2	12.5	9	12.9	236	61.1	745	66.3
12+ YEARS	58	14.3	170	14.1	14	87.5	59	84.3	40	10.4	104	9.3
<b>PRENATAL CARE</b>												
<b>TRIMESTER CARE BEGAN</b>												
1ST TRIMESTER	231	59.1	694	58.8	12	75.0	55	76.4	216	58.4	630	57.5
3RD TRIMESTER	28	7.2	101	8.6	0	0.0	2	2.8	28	7.6	99	9.0
NO PRENATAL CARE	4	1.0	7	0.6	0	0.0	0	0.0	3	0.8	6	0.5
<b>APNCU INDEX</b>												
ADEQUATE+	42	10.8	135	11.6	3	18.8	14	20.3	39	10.6	120	11.0
ADEQUATE	70	18.0	219	18.8	6	37.5	27	39.1	64	17.4	191	17.6
INTERMEDIATE	105	27.1	313	26.8	3	18.8	13	18.8	101	27.5	296	27.3
INADEQUATE	171	44.1	499	42.8	4	25.0	15	21.7	163	44.4	479	44.1
<b>C-SECTION BIRTHS</b>	42	10.0	123	10.0	5	29.4	17	23.0	37	9.3	103	9.0
<b>PRE-TERM BIRTHS</b>	54	12.8	188	15.2	1	5.9	5	6.8	53	13.3	182	15.8
<b>LOW BIRTHWEIGHT</b>	32	7.6	83	6.7	0	0.0	1	1.4	32	8.0	81	7.1

Note: Unknown responses are excluded from the denominator when calculating percentages.

(1) Crude birth rate per 1,000 population.

(2) Teen birth rate per 1,000 female population ages 15-17, 18-19, or 15-19. Population estimates by census area for 15-17 and 18-19 are not available for 2003 or 2004. Therefore, rates for these age groups are not reported.

(3) Fertility rate per 1,000 female population ages 15-44. Population estimates by race by census area are only available for 2003 and 2004. Therefore, three year rates are not reported.

\* Rates based on fewer than 10 occurrences are statistically unreliable and should be used with caution.

\*\* Data suppressed for confidentiality concerns if total births to residents, by race, is less than five observations.

**TABLE 2 SELECTED BIRTH STATISTICS REPORTED BY MOTHER'S RACE:  
2004 AND 2002-2004  
BRISTOL BAY BOROUGH**

	TOTAL				WHITE				NATIVE			
	2004 NUMBER	2004 RATE*	2002-2004 NUMBER	2002-2004 RATE*	2004 NUMBER	2004 RATE*	2002-2004 NUMBER	2002-2004 RATE*	2004 NUMBER	2004 RATE*	2002-2004 NUMBER	2002-2004 RATE*
<b>BIRTH RATES</b>												
CRUDE BIRTH RATE (1)	15	13.7	41	12.2	6	10.5 *	23		7	14.4 *	15	
TEEN BIRTH RATE (2)												
15-17	1		1		0		0		1		1	
18-19	1		1		0		0		1		1	
15-19	2	44.4 *	2	14.8 *	0	0.0	0		2	125.0 *	2	
FERTILITY RATE (3)	15	72.1	41	61.4	6	52.2 *	23		7	94.6 *	15	

	TOTAL				WHITE				NATIVE			
	2004 NUMBER	2004 %	2002-2004 NUMBER	2002-2004 %	2004 NUMBER	2004 %	2002-2004 NUMBER	2002-2004 %	2004 NUMBER	2004 %	2002-2004 NUMBER	2002-2004 %
<b>BIRTHS</b>												
WITHIN AREA	0	0.0	0	0.0	0	0.0	0	0.0	0	0.0	0	0.0
TO RESIDENTS	15	100.0	41	100.0	6	40.0	23	56.1	7	46.7	15	36.6
<b>FACILITY</b>												
HOSPITAL	15	100.0	39	95.1	6	100.0	21	91.3	7	100.0	15	100.0
BIRTHING CENTER	0	0.0	1	2.4	0	0.0	1	4.3	0	0.0	0	0.0
HOME	0	0.0	0	0.0	0	0.0	0	0.0	0	0.0	0	0.0
OTHER	0	0.0	0	0.0	0	0.0	0	0.0	0	0.0	0	0.0
OUTSIDE ALASKA	0	0.0	1	2.4	0	0.0	1	4.3	0	0.0	0	0.0
<b>MOTHER CHARACTERISTICS</b>												
AGE GROUP												
<15	0	0.0	0	0.0	0	0.0	0	0.0	0	0.0	0	0.0
15-19	2	13.3	2	4.9	0	0.0	0	0.0	2	28.6	2	13.3
20-24	2	13.3	10	24.4	0	0.0	7	30.4	1	14.3	1	6.7
25-29	5	33.3	17	41.5	3	50.0	9	39.1	2	28.6	8	53.3
30-34	2	13.3	5	12.2	2	33.3	3	13.0	0	0.0	2	13.3
35-39	3	20.0	6	14.6	1	16.7	4	17.4	1	14.3	1	6.7
40-44	1	6.7	1	2.4	0	0.0	0	0.0	1	14.3	1	6.7
45+	0	0.0	0	0.0	0	0.0	0	0.0	0	0.0	0	0.0
REPORTED DRINKING	0	0.0	0	0.0	0	0.0	0	0.0	0	0.0	0	0.0
REPORTED SMOKING	4	26.7	12	29.3	1	16.7	5	21.7	3	42.9	7	46.7
UNWED	6	40.0	14	34.1	1	16.7	7	30.4	5	71.4	7	46.7
EDUCATION												
<12 YEARS	1	7.1	1	2.6	0	0.0	0	0.0	1	14.3	1	6.7
12 YEARS	5	35.7	18	47.4	1	20.0	10	50.0	4	57.1	8	53.3
12+ YEARS	8	57.1	19	50.0	4	80.0	10	50.0	2	28.6	6	40.0
<b>PRENATAL CARE</b>												
TRIMESTER CARE BEGAN												
1ST TRIMESTER	13	86.7	34	85.0	5	83.3	18	81.8	6	85.7	13	86.7
3RD TRIMESTER	0	0.0	2	5.0	0	0.0	2	9.1	0	0.0	0	0.0
NO PRENATAL CARE	0	0.0	0	0.0	0	0.0	0	0.0	0	0.0	0	0.0
APNCU INDEX												
ADEQUATE+	1	6.7	1	2.6	0	0.0	0	0.0	1	14.3	1	6.7
ADEQUATE	2	13.3	12	30.8	2	33.3	9	42.9	0	0.0	3	20.0
INTERMEDIATE	10	66.7	20	51.3	4	66.7	9	42.9	4	57.1	8	53.3
INADEQUATE	2	13.3	6	15.4	0	0.0	3	14.3	2	28.6	3	20.0
<b>C-SECTION BIRTHS</b>	3	20.0	10	25.0	2	33.3	6	27.3	1	14.3	4	26.7
<b>PRE-TERM BIRTHS</b>	3	20.0	6	14.6	0	0.0	1	4.3	3	42.9	5	33.3
<b>LOW BIRTHWEIGHT</b>	2	13.3	2	5.0	0	0.0	0	0.0	2	28.6	2	13.3

Note: Unknown responses are excluded from the denominator when calculating percentages.

(1) Crude birth rate per 1,000 population.

(2) Teen birth rate per 1,000 female population ages 15-17, 18-19, or 15-19. Population estimates by census area for 15-17 and 18-19 are not available for 2003 or 2004. Therefore, rates for these age groups are not reported.

(3) Fertility rate per 1,000 female population ages 15-44. Population estimates by race by census area are only available for 2003 and 2004. Therefore, three year rates are not reported.

\* Rates based on fewer than 10 occurrences are statistically unreliable and should be used with caution.

\*\* Data suppressed for confidentiality concerns if total births to residents, by race, is less than five observations.

**TABLE 2 SELECTED BIRTH STATISTICS REPORTED BY MOTHER'S RACE:  
2004 AND 2002-2004  
DENALI BOROUGH**

	TOTAL				WHITE				NATIVE			
	2004 NUMBER	2004 RATE*	2002-2004 NUMBER	2002-2004 RATE*	2004 NUMBER	2004 RATE*	2002-2004 NUMBER	2002-2004 RATE*	2004 NUMBER	2004 RATE*	2002-2004 NUMBER	2002-2004 RATE*
<b>BIRTH RATES</b>												
CRUDE BIRTH RATE (1)	12	6.5	66	11.7	11	6.9	59		1	6.2*	2	
TEEN BIRTH RATE (2)												
15-17	0		2		0		2		0		0	
18-19	2		5		2		4		0		0	
15-19	2	33.9*	7	37.0*	2	37.7*	6		0	0.0	0	
FERTILITY RATE (3)	12	32.4	66	58.6	11	34.8	59		1	43.5*	2	

	TOTAL				WHITE				NATIVE			
	2004 NUMBER	2004 %	2002-2004 NUMBER	2002-2004 %	2004 NUMBER	2004 %	2002-2004 NUMBER	2002-2004 %	2004 NUMBER	2004 %	2002-2004 NUMBER	2002-2004 %
<b>BIRTHS</b>												
WITHIN AREA	0	0.0	0	0.0	0	0.0	0	0.0	0	0.0	0	0.0
TO RESIDENTS	12	100.0	66	100.0	11	91.7	59	89.4	1	8.3	2	3.0
<b>FACILITY</b>												
HOSPITAL	11	91.7	64	97.0	10	90.9	57	96.6	1	100.0	2	100.0
BIRTHING CENTER	1	8.3	2	3.0	1	9.1	2	3.4	0	0.0	0	0.0
HOME	0	0.0	0	0.0	0	0.0	0	0.0	0	0.0	0	0.0
OTHER	0	0.0	0	0.0	0	0.0	0	0.0	0	0.0	0	0.0
OUTSIDE ALASKA	0	0.0	0	0.0	0	0.0	0	0.0	0	0.0	0	0.0
<b>MOTHER CHARACTERISTICS</b>												
<b>AGE GROUP</b>												
<15	0	0.0	0	0.0	**		**	**	**		**	**
15-19	2	16.7	7	10.6	**		**	**	**		**	**
20-24	2	16.7	12	18.2	**		**	**	**		**	**
25-29	4	33.3	19	28.8	**		**	**	**		**	**
30-34	3	25.0	16	24.2	**		**	**	**		**	**
35-39	1	8.3	8	12.1	**		**	**	**		**	**
40-44	0	0.0	4	6.1	**		**	**	**		**	**
45+	0	0.0	0	0.0	**		**	**	**		**	**
REPORTED DRINKING	0	0.0	1	1.5	**		**	**	**		**	**
REPORTED SMOKING	1	8.3	13	19.7	**		**	**	**		**	**
UNWED	2	16.7	9	13.6	**		**	**	**		**	**
<b>EDUCATION</b>												
<12 YEARS	1	8.3	6	9.7	**		**	**	**		**	**
12 YEARS	5	41.7	23	37.1	**		**	**	**		**	**
12+ YEARS	6	50.0	33	53.2	**		**	**	**		**	**
<b>PRENATAL CARE</b>												
<b>TRIMESTER CARE BEGAN</b>												
1ST TRIMESTER	10	83.3	53	81.5	**		**	**	**		**	**
3RD TRIMESTER	0	0.0	1	1.5	**		**	**	**		**	**
NO PRENATAL CARE	0	0.0	0	0.0	**		**	**	**		**	**
<b>APNCU INDEX</b>												
ADEQUATE+	0	0.0	7	10.9	**		**	**	**		**	**
ADEQUATE	3	25.0	19	29.7	**		**	**	**		**	**
INTERMEDIATE	5	41.7	26	40.6	**		**	**	**		**	**
INADEQUATE	4	33.3	12	18.8	**		**	**	**		**	**
<b>C-SECTION BIRTHS</b>	1	8.3	11	16.7	**		**	**	**		**	**
<b>PRE-TERM BIRTHS</b>	0	0.0	4	6.1	**		**	**	**		**	**
<b>LOW BIRTHWEIGHT</b>	0	0.0	3	4.5	**		**	**	**		**	**

Note: Unknown responses are excluded from the denominator when calculating percentages.

(1) Crude birth rate per 1,000 population.

(2) Teen birth rate per 1,000 female population ages 15-17, 18-19, or 15-19. Population estimates by census area for 15-17 and 18-19 are not available for 2003 or 2004. Therefore, rates for these age groups are not reported.

(3) Fertility rate per 1,000 female population ages 15-44. Population estimates by race by census area are only available for 2003 and 2004. Therefore, three year rates are not reported.

\* Rates based on fewer than 10 occurrences are statistically unreliable and should be used with caution.

\*\* Data suppressed for confidentiality concerns if total births to residents, by race, is less than five observations.

**TABLE 2 SELECTED BIRTH STATISTICS REPORTED BY MOTHER'S RACE:  
2004 AND 2002-2004  
DILLINGHAM CENSUS AREA**

	TOTAL				WHITE				NATIVE			
	2004 NUMBER	2004 RATE*	2002-2004 NUMBER	2002-2004 RATE*	2004 NUMBER	2004 RATE*	2002-2004 NUMBER	2002-2004 RATE*	2004 NUMBER	2004 RATE*	2002-2004 NUMBER	2002-2004 RATE*
<b>BIRTH RATES</b>												
CRUDE BIRTH RATE (1)	94	19.4	272	18.5	16	13.5	39		78	22.0	230	
TEEN BIRTH RATE (2)												
15-17	6		14		0		0		6		14	
18-19	10		25		1		1		9		24	
15-19	16	66.4	39	57.6	1	28.6 *	1		15	73.5	38	
FERTILITY RATE (3)	94	95.8	272	92.2	16	68.7	39		78	108.0	230	

	TOTAL				WHITE				NATIVE			
	2004 NUMBER	2004 %	2002-2004 NUMBER	2002-2004 %	2004 NUMBER	2004 %	2002-2004 NUMBER	2002-2004 %	2004 NUMBER	2004 %	2002-2004 NUMBER	2002-2004 %
<b>BIRTHS</b>												
WITHIN AREA	54	100.0	157	100.0	10	18.5	17	10.8	44	81.5	138	87.9
TO RESIDENTS	94	100.0	272	100.0	16	17.0	39	14.3	78	83.0	230	84.6
<b>FACILITY</b>												
HOSPITAL	91	96.8	257	94.5	14	87.5	29	74.4	77	98.7	226	98.3
BIRTHING CENTER	1	1.1	1	0.4	0	0.0	0	0.0	1	1.3	1	0.4
HOME	0	0.0	4	1.5	0	0.0	3	7.7	0	0.0	1	0.4
OTHER	0	0.0	3	1.1	0	0.0	0	0.0	0	0.0	2	0.9
OUTSIDE ALASKA	2	2.1	7	2.6	2	12.5	7	17.9	0	0.0	0	0.0
<b>MOTHER CHARACTERISTICS</b>												
AGE GROUP												
<15	0	0.0	1	0.4	0	0.0	0	0.0	0	0.0	1	0.4
15-19	16	17.0	39	14.3	1	6.3	1	2.6	15	19.2	38	16.5
20-24	23	24.5	74	27.2	2	12.5	7	17.9	21	26.9	67	29.1
25-29	22	23.4	69	25.4	6	37.5	14	35.9	16	20.5	54	23.5
30-34	17	18.1	47	17.3	6	37.5	12	30.8	11	14.1	34	14.8
35-39	12	12.8	34	12.5	1	6.3	4	10.3	11	14.1	29	12.6
40-44	4	4.3	8	2.9	0	0.0	1	2.6	4	5.1	7	3.0
45+	0	0.0	0	0.0	0	0.0	0	0.0	0	0.0	0	0.0
REPORTED DRINKING	3	3.2	12	4.4	1	6.7	2	5.4	2	2.6	10	4.3
REPORTED SMOKING	25	26.6	92	33.8	2	12.5	5	12.8	23	29.5	87	37.8
UNWED	38	40.4	131	48.2	1	6.3	6	15.4	37	47.4	124	53.9
EDUCATION												
<12 YEARS	21	22.6	51	19.0	0	0.0	0	0.0	21	27.3	51	22.5
12 YEARS	43	46.2	138	51.3	4	25.0	9	23.1	39	50.6	128	56.4
12+ YEARS	29	31.2	80	29.7	12	75.0	30	76.9	17	22.1	48	21.1
<b>PRENATAL CARE</b>												
TRIMESTER CARE BEGAN												
1ST TRIMESTER	67	71.3	204	75.3	11	68.8	32	82.1	56	71.8	169	73.8
3RD TRIMESTER	7	7.4	16	5.9	0	0.0	1	2.6	7	9.0	15	6.6
NO PRENATAL CARE	0	0.0	1	0.4	0	0.0	0	0.0	0	0.0	1	0.4
APNCU INDEX												
ADEQUATE+	21	22.3	59	21.8	6	37.5	15	39.5	15	19.2	44	19.1
ADEQUATE	26	27.7	66	24.4	5	31.3	11	28.9	21	26.9	53	23.0
INTERMEDIATE	23	24.5	75	27.7	3	18.8	8	21.1	20	25.6	66	28.7
INADEQUATE	24	25.5	71	26.2	2	12.5	4	10.5	22	28.2	67	29.1
<b>C-SECTION BIRTHS</b>	6	6.5	18	6.6	1	6.3	8	20.5	5	6.5	10	4.4
<b>PRE-TERM BIRTHS</b>	12	12.8	36	13.2	2	12.5	6	15.4	10	12.8	29	12.6
<b>LOW BIRTHWEIGHT</b>	3	3.2	11	4.0	1	6.3	1	2.6	2	2.6	10	4.3

Note: Unknown responses are excluded from the denominator when calculating percentages.

- (1) Crude birth rate per 1,000 population.
- (2) Teen birth rate per 1,000 female population ages 15-17, 18-19, or 15-19. Population estimates by census area for 15-17 and 18-19 are not available for 2003 or 2004. Therefore, rates for these age groups are not reported.
- (3) Fertility rate per 1,000 female population ages 15-44. Population estimates by race by census area are only available for 2003 and 2004. Therefore, three year rates are not reported.

\* Rates based on fewer than 10 occurrences are statistically unreliable and should be used with caution.

\*\* Data suppressed for confidentiality concerns if total births to residents, by race, is less than five observations.

**TABLE 2 SELECTED BIRTH STATISTICS REPORTED BY MOTHER'S RACE:  
2004 AND 2002-2004  
FAIRBANKS NORTH STAR BOROUGH**

	TOTAL				WHITE				NATIVE			
	2004 NUMBER	2004 RATE*	2002-2004 NUMBER	2002-2004 RATE*	2004 NUMBER	2004 RATE*	2002-2004 NUMBER	2002-2004 RATE*	2004 NUMBER	2004 RATE*	2002-2004 NUMBER	2002-2004 RATE*
<b>BIRTH RATES</b>												
CRUDE BIRTH RATE (1)	1,590	18.7	4,670	18.5	1,201	17.9	3,561		177	21.7	464	
TEEN BIRTH RATE (2)												
15-17	28		107		20		70		4		21	
18-19	102		315		75		221		21		59	
15-19	130	39.2	422	43.4	95	37.5	291		25	59.2	80	
FERTILITY RATE (3)	1,590	83.0	4,670	81.5	1,201	81.1	3,561		177	89.0	464	

	TOTAL				WHITE				NATIVE			
	2004 NUMBER	2004 %	2002-2004 NUMBER	2002-2004 %	2004 NUMBER	2004 %	2002-2004 NUMBER	2002-2004 %	2004 NUMBER	2004 %	2002-2004 NUMBER	2002-2004 %
<b>BIRTHS</b>												
WITHIN AREA	1,725	100.0	5,141	100.0	1,269	73.6	3,780	73.5	246	14.3	713	13.9
TO RESIDENTS	1,590	100.0	4,670	100.0	1,201	75.5	3,561	76.3	177	11.1	464	9.9
<b>FACILITY</b>												
HOSPITAL	1,524	95.8	4,465	95.6	1,147	95.5	3,380	94.9	172	97.2	457	98.5
BIRTHING CENTER	38	2.4	123	2.6	31	2.6	111	3.1	5	2.8	6	1.3
HOME	14	0.9	47	1.0	12	1.0	42	1.2	0	0.0	1	0.2
OTHER	0	0.0	1	0.0	0	0.0	1	0.0	0	0.0	0	0.0
OUTSIDE ALASKA	14	0.9	34	0.7	11	0.9	27	0.8	0	0.0	0	0.0
<b>MOTHER CHARACTERISTICS</b>												
AGE GROUP												
<15	2	0.1	5	0.1	2	0.2	3	0.1	0	0.0	2	0.4
15-19	130	8.2	422	9.0	95	7.9	291	8.2	25	14.1	80	17.2
20-24	572	36.0	1,571	33.7	427	35.6	1,182	33.2	70	39.5	163	35.1
25-29	444	27.9	1,310	28.1	334	27.8	1,016	28.5	42	23.7	116	25.0
30-34	276	17.4	851	18.2	215	17.9	669	18.8	23	13.0	63	13.6
35-39	134	8.4	401	8.6	102	8.5	307	8.6	14	7.9	32	6.9
40-44	31	1.9	104	2.2	25	2.1	87	2.4	3	1.7	8	1.7
45+	1	0.1	4	0.1	1	0.1	4	0.1	0	0.0	0	0.0
REPORTED DRINKING	15	0.9	40	0.9	4	0.3	19	0.5	9	5.1	17	3.7
REPORTED SMOKING	195	12.3	603	12.9	139	11.6	448	12.6	44	25.0	118	25.5
UNWED	375	23.6	1,100	23.6	227	18.9	672	18.9	108	61.0	279	60.1
EDUCATION												
<12 YEARS	114	7.4	376	8.4	79	6.7	265	7.6	25	15.1	74	17.0
12 YEARS	622	40.3	1,803	40.4	468	39.6	1,361	39.2	74	44.6	210	48.3
12+ YEARS	806	52.3	2,283	51.2	636	53.8	1,846	53.2	67	40.4	151	34.7
<b>PRENATAL CARE</b>												
TRIMESTER CARE BEGAN												
1ST TRIMESTER	1,268	81.9	3,703	81.2	986	84.1	2,895	83.0	112	67.1	303	68.7
3RD TRIMESTER	79	5.1	211	4.6	59	5.0	153	4.4	12	7.2	26	5.9
NO PRENATAL CARE	1	0.1	9	0.2	1	0.1	7	0.2	0	0.0	0	0.0
APNCU INDEX												
ADEQUATE+	277	18.0	910	20.0	213	18.3	715	20.5	30	18.0	71	16.1
ADEQUATE	736	47.8	2,062	45.3	558	47.9	1,592	45.7	74	44.3	186	42.2
INTERMEDIATE	310	20.1	928	20.4	243	20.9	708	20.3	20	12.0	85	19.3
INADEQUATE	217	14.1	652	14.3	151	13.0	467	13.4	43	25.7	99	22.4
<b>C-SECTION BIRTHS</b>	357	22.7	979	21.1	278	23.3	763	21.6	32	18.3	78	16.9
<b>PRE-TERM BIRTHS</b>	141	8.9	429	9.2	100	8.3	292	8.2	17	9.7	50	10.8
<b>LOW BIRTHWEIGHT</b>	74	4.7	237	5.1	54	4.5	172	4.8	8	4.5	20	4.3

Note: Unknown responses are excluded from the denominator when calculating percentages.

(1) Crude birth rate per 1,000 population.

(2) Teen birth rate per 1,000 female population ages 15-17, 18-19, or 15-19. Population estimates by census area for 15-17 and 18-19 are not available for 2003 or 2004. Therefore, rates for these age groups are not reported.

(3) Fertility rate per 1,000 female population ages 15-44. Population estimates by race by census area are only available for 2003 and 2004. Therefore, three year rates are not reported.

\* Rates based on fewer than 10 occurrences are statistically unreliable and should be used with caution.

\*\* Data suppressed for confidentiality concerns if total births to residents, by race, is less than five observations.

**TABLE 2 SELECTED BIRTH STATISTICS REPORTED BY MOTHER'S RACE:  
2004 AND 2002-2004  
HAINES BOROUGH**

	TOTAL				WHITE				NATIVE			
	2004 NUMBER	2004 RATE*	2002-2004 NUMBER	2002-2004 RATE*	2004 NUMBER	2004 RATE*	2002-2004 NUMBER	2002-2004 RATE*	2004 NUMBER	2004 RATE*	2002-2004 NUMBER	2002-2004 RATE*
<b>BIRTH RATES</b>												
CRUDE BIRTH RATE (1)	17	7.6	58	8.4	12	6.4	46		2	6.5 *	5	
TEEN BIRTH RATE (2)												
15-17	0		0		0		0		0		0	
18-19	2		3		2		2		0		1	
15-19	2	26.3 *	3	11.5 *	2	38.5 *	2		0	0.0	1	
FERTILITY RATE (3)	17	44.0	58	47.2	12	38.8	46		2	32.3 *	5	

	TOTAL				WHITE				NATIVE			
	2004 NUMBER	2004 %	2002-2004 NUMBER	2002-2004 %	2004 NUMBER	2004 %	2002-2004 NUMBER	2002-2004 %	2004 NUMBER	2004 %	2002-2004 NUMBER	2002-2004 %
<b>BIRTHS</b>												
WITHIN AREA	0	0.0	1	100.0	0	0.0	1	100.0	0	0.0	0	0.0
TO RESIDENTS	17	100.0	58	100.0	12	70.6	46	79.3	2	11.8	5	8.6
<b>FACILITY</b>												
HOSPITAL	10	58.8	30	51.7	8	66.7	25	54.3	2	100.0	5	100.0
BIRTHING CENTER	3	17.6	16	27.6	3	25.0	16	34.8	0	0.0	0	0.0
HOME	1	5.9	3	5.2	1	8.3	3	6.5	0	0.0	0	0.0
OTHER	0	0.0	0	0.0	0	0.0	0	0.0	0	0.0	0	0.0
OUTSIDE ALASKA	3	17.6	9	15.5	0	0.0	2	4.3	0	0.0	0	0.0
<b>MOTHER CHARACTERISTICS</b>												
AGE GROUP												
<15	0	0.0	0	0.0	**		0	0.0	**		0	0.0
15-19	2	11.8	3	5.2	**		2	4.3	**		1	20.0
20-24	2	11.8	12	20.7	**		8	17.4	**		3	60.0
25-29	4	23.5	11	19.0	**		9	19.6	**		1	20.0
30-34	5	29.4	21	36.2	**		20	43.5	**		0	0.0
35-39	2	11.8	5	8.6	**		4	8.7	**		0	0.0
40-44	2	11.8	6	10.3	**		3	6.5	**		0	0.0
45+	0	0.0	0	0.0	**		0	0.0	**		0	0.0
REPORTED DRINKING	0	0.0	1	2.1	**		1	2.3	**		0	0.0
REPORTED SMOKING	1	7.1	6	12.0	**		5	11.1	**		1	20.0
UNWED	5	35.7	16	32.0	**		14	31.1	**		2	40.0
EDUCATION												
<12 YEARS	1	7.1	1	2.0	**		1	2.2	**		0	0.0
12 YEARS	7	50.0	19	37.3	**		14	30.4	**		5	100.0
12+ YEARS	6	42.9	31	60.8	**		31	67.4	**		0	0.0
<b>PRENATAL CARE</b>												
TRIMESTER CARE BEGAN												
1ST TRIMESTER	11	84.6	41	83.7	**		37	84.1	**		4	80.0
3RD TRIMESTER	1	7.7	2	4.1	**		2	4.5	**		0	0.0
NO PRENATAL CARE	0	0.0	0	0.0	**		0	0.0	**		0	0.0
APNCU INDEX												
ADEQUATE+	4	33.3	16	38.1	**		14	36.8	**		2	50.0
ADEQUATE	4	33.3	13	31.0	**		12	31.6	**		1	25.0
INTERMEDIATE	2	16.7	9	21.4	**		8	21.1	**		1	25.0
INADEQUATE	2	16.7	4	9.5	**		4	10.5	**		0	0.0
<b>C-SECTION BIRTHS</b>	3	21.4	12	24.0	**		11	24.4	**		1	20.0
<b>PRE-TERM BIRTHS</b>	1	7.1	2	4.0	**		2	4.3	**		0	0.0
<b>LOW BIRTHWEIGHT</b>	0	0.0	1	2.0	**		1	2.2	**		0	0.0

Note: Unknown responses are excluded from the denominator when calculating percentages.

(1) Crude birth rate per 1,000 population.

(2) Teen birth rate per 1,000 female population ages 15-17, 18-19, or 15-19. Population estimates by census area for 15-17 and 18-19 are not available for 2003 or 2004. Therefore, rates for these age groups are not reported.

(3) Fertility rate per 1,000 female population ages 15-44. Population estimates by race by census area are only available for 2003 and 2004. Therefore, three year rates are not reported.

\* Rates based on fewer than 10 occurrences are statistically unreliable and should be used with caution.

\*\* Data suppressed for confidentiality concerns if total births to residents, by race, is less than five observations.

**TABLE 2 SELECTED BIRTH STATISTICS REPORTED BY MOTHER'S RACE:  
2004 AND 2002-2004  
JUNEAU BOROUGH**

	TOTAL				WHITE				NATIVE			
	2004 NUMBER	2004 RATE*	2002-2004 NUMBER	2002-2004 RATE*	2004 NUMBER	2004 RATE*	2002-2004 NUMBER	2002-2004 RATE*	2004 NUMBER	2004 RATE*	2002-2004 NUMBER	2002-2004 RATE*
<b>BIRTH RATES</b>												
CRUDE BIRTH RATE (1)	378	12.2	1,169	12.5	264	11.2	821		84	18.4	250	
TEEN BIRTH RATE (2)												
15-17	6		24		0		11		5		10	
18-19	23		81		16		49		7		26	
15-19	29	24.7	105	30.2	16	18.8	60		12	60.3	36	
FERTILITY RATE (3)	378	58.0	1,169	58.8	264	54.0	821		84	84.2	250	

	TOTAL				WHITE				NATIVE			
	2004 NUMBER	2004 %	2002-2004 NUMBER	2002-2004 %	2004 NUMBER	2004 %	2002-2004 NUMBER	2002-2004 %	2004 NUMBER	2004 %	2002-2004 NUMBER	2002-2004 %
<b>BIRTHS</b>												
WITHIN AREA	404	100.0	1,232	100.0	281	69.6	860	69.8	89	22.0	271	22.0
TO RESIDENTS	378	100.0	1,169	100.0	264	69.8	821	70.2	84	22.2	250	21.4
<b>FACILITY</b>												
HOSPITAL	329	87.0	986	84.3	222	84.1	665	81.0	82	97.6	235	94.0
BIRTHING CENTER	28	7.4	109	9.3	24	9.1	91	11.1	2	2.4	11	4.4
HOME	16	4.2	46	3.9	13	4.9	40	4.9	0	0.0	2	0.8
OTHER	0	0.0	0	0.0	0	0.0	0	0.0	0	0.0	0	0.0
OUTSIDE ALASKA	5	1.3	28	2.4	5	1.9	25	3.0	0	0.0	2	0.8
<b>MOTHER CHARACTERISTICS</b>												
<b>AGE GROUP</b>												
<15	0	0.0	1	0.1	0	0.0	0	0.0	0	0.0	1	0.4
15-19	29	7.7	105	9.0	16	6.1	60	7.3	12	14.3	36	14.4
20-24	104	27.5	288	24.7	60	22.7	172	21.0	36	42.9	96	38.4
25-29	112	29.6	310	26.5	79	29.9	224	27.3	21	25.0	57	22.8
30-34	74	19.6	264	22.6	62	23.5	210	25.6	7	8.3	30	12.0
35-39	52	13.8	159	13.6	41	15.5	123	15.0	7	8.3	24	9.6
40-44	5	1.3	39	3.3	4	1.5	29	3.5	1	1.2	6	2.4
45+	2	0.5	2	0.2	2	0.8	2	0.2	0	0.0	0	0.0
REPORTED DRINKING	10	2.7	24	2.1	4	1.6	12	1.5	5	6.0	10	4.1
REPORTED SMOKING	57	15.2	172	14.9	37	14.1	105	12.9	18	21.4	60	24.4
UNWED	133	35.2	398	34.1	62	23.5	202	24.7	63	75.0	171	68.4
<b>EDUCATION</b>												
<12 YEARS	34	9.2	123	11.0	13	5.0	57	7.2	19	22.9	61	25.2
12 YEARS	136	36.9	370	32.9	86	33.0	227	28.7	42	50.6	113	46.7
12+ YEARS	199	53.9	630	56.1	162	62.1	508	64.1	22	26.5	68	28.1
<b>PRENATAL CARE</b>												
<b>TRIMESTER CARE BEGAN</b>												
1ST TRIMESTER	334	92.8	965	91.0	240	95.6	704	92.6	67	83.8	188	87.0
3RD TRIMESTER	4	1.1	13	1.2	1	0.4	5	0.7	2	2.5	4	1.9
NO PRENATAL CARE	3	0.9	6	0.7	2	0.9	5	0.8	1	1.4	1	0.6
<b>APNCU INDEX</b>												
ADEQUATE+	133	40.8	408	47.5	97	41.6	311	49.8	29	42.0	66	40.7
ADEQUATE	140	42.9	334	38.9	102	43.8	242	38.7	26	37.7	63	38.9
INTERMEDIATE	31	9.5	71	8.3	24	10.3	47	7.5	6	8.7	18	11.1
INADEQUATE	22	6.7	46	5.4	10	4.3	25	4.0	8	11.6	15	9.3
<b>C-SECTION BIRTHS</b>	127	34.2	390	33.9	93	35.9	289	35.9	27	32.5	71	28.7
<b>PRE-TERM BIRTHS</b>	51	13.6	122	10.7	33	12.5	78	9.6	15	17.9	30	12.8
<b>LOW BIRTHWEIGHT</b>	16	4.2	63	5.4	11	4.2	45	5.5	4	4.8	14	5.6

Note: Unknown responses are excluded from the denominator when calculating percentages.

(1) Crude birth rate per 1,000 population.

(2) Teen birth rate per 1,000 female population ages 15-17, 18-19, or 15-19. Population estimates by census area for 15-17 and 18-19 are not available for 2003 or 2004. Therefore, rates for these age groups are not reported.

(3) Fertility rate per 1,000 female population ages 15-44. Population estimates by race by census area are only available for 2003 and 2004. Therefore, three year rates are not reported.

\* Rates based on fewer than 10 occurrences are statistically unreliable and should be used with caution.

\*\* Data suppressed for confidentiality concerns if total births to residents, by race, is less than five observations.



**TABLE 2 SELECTED BIRTH STATISTICS REPORTED BY MOTHER'S RACE:  
2004 AND 2002-2004  
KENAI PENINSULA BOROUGH**

	TOTAL				WHITE				NATIVE			
	2004 NUMBER	2004 RATE*	2002-2004 NUMBER	2002-2004 RATE*	2004 NUMBER	2004 RATE*	2002-2004 NUMBER	2002-2004 RATE*	2004 NUMBER	2004 RATE*	2002-2004 NUMBER	2002-2004 RATE*
<b>BIRTH RATES</b>												
CRUDE BIRTH RATE (1)	583	11.4	1,866	12.2	497	11.3	1,612		70	13.8	194	
TEEN BIRTH RATE (2)												
15-17	17		51		16		46		1		4	
18-19	45		141		34		115		10		23	
15-19	62	29.0	192	29.5	50	27.4	161		11	49.3	27	
FERTILITY RATE (3)	583	59.2	1,866	61.7	497	58.9	1,612		70	68.4	194	
	TOTAL				WHITE				NATIVE			
	2004 NUMBER	2004 %	2002-2004 NUMBER	2002-2004 %	2004 NUMBER	2004 %	2002-2004 NUMBER	2002-2004 %	2004 NUMBER	2004 %	2002-2004 NUMBER	2002-2004 %
<b>BIRTHS</b>												
WITHIN AREA	499	100.0	1,599	100.0	439	88.0	1,415	88.5	48	9.6	132	8.3
TO RESIDENTS	583	100.0	1,866	100.0	497	85.2	1,612	86.4	70	12.0	194	10.4
<b>FACILITY</b>												
HOSPITAL	533	91.4	1,720	92.2	450	90.5	1,475	91.5	69	98.6	193	99.5
BIRTHING CENTER	28	4.8	77	4.1	27	5.4	72	4.5	1	1.4	1	0.5
HOME	19	3.3	56	3.0	17	3.4	53	3.3	0	0.0	0	0.0
OTHER	2	0.3	7	0.4	2	0.4	7	0.4	0	0.0	0	0.0
OUTSIDE ALASKA	1	0.2	6	0.3	1	0.2	5	0.3	0	0.0	0	0.0
<b>MOTHER CHARACTERISTICS</b>												
AGE GROUP												
<15	0	0.0	2	0.1	0	0.0	2	0.1	0	0.0	0	0.0
15-19	62	10.6	192	10.3	50	10.1	161	10.0	11	15.7	27	13.9
20-24	153	26.2	510	27.3	122	24.5	427	26.5	26	37.1	67	34.5
25-29	158	27.1	508	27.2	141	28.4	453	28.1	16	22.9	44	22.7
30-34	131	22.5	403	21.6	111	22.3	344	21.3	13	18.6	40	20.6
35-39	60	10.3	197	10.6	55	11.1	175	10.9	4	5.7	15	7.7
40-44	12	2.1	44	2.4	12	2.4	41	2.5	0	0.0	1	0.5
45+	7	1.2	10	0.5	6	1.2	9	0.6	0	0.0	0	0.0
REPORTED DRINKING	7	1.2	32	1.7	6	1.2	26	1.6	1	1.4	5	2.6
REPORTED SMOKING	98	16.9	321	17.3	70	14.1	242	15.1	27	38.6	75	38.7
UNWED	161	27.6	532	28.5	123	24.7	420	26.1	36	51.4	100	51.5
EDUCATION												
<12 YEARS	83	14.6	272	14.9	67	13.9	224	14.2	16	22.9	45	23.2
12 YEARS	230	40.5	742	40.7	186	38.5	623	39.4	38	54.3	100	51.5
12+ YEARS	255	44.9	810	44.4	230	47.6	735	46.5	16	22.9	49	25.3
<b>PRENATAL CARE</b>												
TRIMESTER CARE BEGAN												
1ST TRIMESTER	467	83.4	1,476	81.8	403	84.3	1,292	82.5	53	77.9	141	76.2
3RD TRIMESTER	16	2.9	54	3.0	14	2.9	48	3.1	2	2.9	6	3.2
NO PRENATAL CARE	2	0.4	6	0.3	1	0.2	4	0.3	1	1.5	2	1.1
APNCU INDEX												
ADEQUATE+	121	22.8	388	22.6	105	23.3	342	23.0	11	16.2	33	18.0
ADEQUATE	247	46.6	780	45.4	218	48.4	692	46.6	24	35.3	68	37.2
INTERMEDIATE	93	17.5	321	18.7	75	16.7	265	17.8	18	26.5	46	25.1
INADEQUATE	69	13.0	229	13.3	52	11.6	186	12.5	15	22.1	36	19.7
<b>C-SECTION BIRTHS</b>	116	20.1	374	20.2	106	21.6	323	20.2	8	11.4	36	18.6
<b>PRE-TERM BIRTHS</b>	47	8.1	167	9.0	39	7.9	140	8.8	7	10.0	19	9.8
<b>LOW BIRTHWEIGHT</b>	27	4.6	92	4.9	24	4.8	79	4.9	3	4.3	8	4.1

Note: Unknown responses are excluded from the denominator when calculating percentages.

(1) Crude birth rate per 1,000 population.

(2) Teen birth rate per 1,000 female population ages 15-17, 18-19, or 15-19. Population estimates by census area for 15-17 and 18-19 are not available for 2003 or 2004. Therefore, rates for these age groups are not reported.

(3) Fertility rate per 1,000 female population ages 15-44. Population estimates by race by census area are only available for 2003 and 2004. Therefore, three year rates are not reported.

\* Rates based on fewer than 10 occurrences are statistically unreliable and should be used with caution.

\*\* Data suppressed for confidentiality concerns if total births to residents, by race, is less than five observations.

**TABLE 2 SELECTED BIRTH STATISTICS REPORTED BY MOTHER'S RACE:  
2004 AND 2002-2004  
KETCHIKAN GATEWAY BOROUGH**

	TOTAL				WHITE				NATIVE			
	2004 NUMBER	2004 RATE*	2002-2004 NUMBER	2002-2004 RATE*	2004 NUMBER	2004 RATE*	2002-2004 NUMBER	2002-2004 RATE*	2004 NUMBER	2004 RATE*	2002-2004 NUMBER	2002-2004 RATE*
<b>BIRTH RATES</b>												
CRUDE BIRTH RATE (1)	182	14.0	541	13.4	136	14.0	373		26	11.2	115	
TEEN BIRTH RATE (2)												
15-17	4		14		2		5		2		9	
18-19	15		37		11		22		3		11	
15-19	19	38.8	51	32.8	13	37.4	27		5	52.6*	20	
FERTILITY RATE (3)	182	70.5	541	66.0	136	71.0	373		26	55.8	115	

	TOTAL				WHITE				NATIVE			
	2004 NUMBER	2004 %	2002-2004 NUMBER	2002-2004 %	2004 NUMBER	2004 %	2002-2004 NUMBER	2002-2004 %	2004 NUMBER	2004 %	2002-2004 NUMBER	2002-2004 %
<b>BIRTHS</b>												
WITHIN AREA	249	100.0	744	100.0	168	67.5	474	63.7	61	24.5	210	28.2
TO RESIDENTS	182	100.0	541	100.0	136	74.7	373	68.9	26	14.3	115	21.3
<b>FACILITY</b>												
HOSPITAL	148	81.3	466	86.1	109	80.1	317	85.0	22	84.6	102	88.7
BIRTHING CENTER	17	9.3	17	3.1	13	9.6	13	3.5	4	15.4	4	3.5
HOME	11	6.0	42	7.8	11	8.1	32	8.6	0	0.0	7	6.1
OTHER	1	0.5	2	0.4	1	0.7	1	0.3	0	0.0	1	0.9
OUTSIDE ALASKA	5	2.7	14	2.6	2	1.5	10	2.7	0	0.0	1	0.9
<b>MOTHER CHARACTERISTICS</b>												
<b>AGE GROUP</b>												
<15	0	0.0	0	0.0	0	0.0	0	0.0	0	0.0	0	0.0
15-19	19	10.4	51	9.4	13	9.6	27	7.2	5	19.2	20	17.4
20-24	49	26.9	170	31.4	38	27.9	113	30.3	7	26.9	42	36.5
25-29	48	26.4	136	25.1	37	27.2	94	25.2	7	26.9	27	23.5
30-34	46	25.3	129	23.8	31	22.8	95	25.5	7	26.9	21	18.3
35-39	19	10.4	48	8.9	16	11.8	37	9.9	0	0.0	5	4.3
40-44	1	0.5	6	1.1	1	0.7	6	1.6	0	0.0	0	0.0
45+	0	0.0	1	0.2	0	0.0	1	0.3	0	0.0	0	0.0
REPORTED DRINKING	1	0.6	2	0.4	0	0.0	1	0.3	1	3.8	1	0.9
REPORTED SMOKING	34	18.7	120	22.2	26	19.1	81	21.7	6	23.1	33	28.7
UNWED	70	38.5	200	37.0	46	33.8	118	31.6	16	61.5	66	57.4
<b>EDUCATION</b>												
<12 YEARS	20	11.6	71	13.9	10	7.8	35	9.8	6	24.0	27	25.0
12 YEARS	71	41.0	211	41.3	49	38.3	134	37.6	12	48.0	54	50.0
12+ YEARS	82	47.4	229	44.8	69	53.9	187	52.5	7	28.0	27	25.0
<b>PRENATAL CARE</b>												
<b>TRIMESTER CARE BEGAN</b>												
1ST TRIMESTER	154	86.0	452	85.8	117	88.0	326	89.1	20	76.9	83	76.1
3RD TRIMESTER	2	1.1	11	2.1	1	0.8	5	1.4	1	3.8	6	5.5
NO PRENATAL CARE	1	0.6	3	0.6	1	0.8	1	0.3	0	0.0	2	1.8
<b>APNCU INDEX</b>												
ADEQUATE+	73	41.7	227	43.9	55	42.3	164	45.9	8	30.8	42	38.5
ADEQUATE	81	46.3	232	44.9	60	46.2	162	45.4	13	50.0	44	40.4
INTERMEDIATE	12	6.9	24	4.6	11	8.5	18	5.0	1	3.8	6	5.5
INADEQUATE	9	5.1	34	6.6	4	3.1	13	3.6	4	15.4	17	15.6
<b>C-SECTION BIRTHS</b>	41	22.5	130	24.0	33	24.3	97	26.0	3	11.5	21	18.3
<b>PRE-TERM BIRTHS</b>	18	9.9	52	9.6	13	9.6	31	8.3	1	4.0	13	11.4
<b>LOW BIRTHWEIGHT</b>	11	6.0	33	6.1	7	5.1	22	5.9	2	7.7	7	6.1

Note: Unknown responses are excluded from the denominator when calculating percentages.

(1) Crude birth rate per 1,000 population.

(2) Teen birth rate per 1,000 female population ages 15-17, 18-19, or 15-19. Population estimates by census area for 15-17 and 18-19 are not available for 2003 or 2004. Therefore, rates for these age groups are not reported.

(3) Fertility rate per 1,000 female population ages 15-44. Population estimates by race by census area are only available for 2003 and 2004. Therefore, three year rates are not reported.

\* Rates based on fewer than 10 occurrences are statistically unreliable and should be used with caution.

\*\* Data suppressed for confidentiality concerns if total births to residents, by race, is less than five observations.

**TABLE 2 SELECTED BIRTH STATISTICS REPORTED BY MOTHER'S RACE:  
2004 AND 2002-2004  
KODIAK ISLAND BOROUGH**

	TOTAL				WHITE				NATIVE			
	2004 NUMBER	2004 RATE*	2002-2004 NUMBER	2002-2004 RATE*	2004 NUMBER	2004 RATE*	2002-2004 NUMBER	2002-2004 RATE*	2004 NUMBER	2004 RATE*	2002-2004 NUMBER	2002-2004 RATE*
<b>BIRTH RATES</b>												
CRUDE BIRTH RATE (1)	212	15.7	628	15.3	120	14.7	376		36	16.9	92	
TEEN BIRTH RATE (2)												
15-17	4		13		2		6		1		5	
18-19	19		41		11		28		6		8	
15-19	23	43.8	54	34.5	13	43.8	34		7	93.3 *	13	
FERTILITY RATE (3)	212	75.0	628	72.6	120	67.9	376		36	91.8	92	
	2004 NUMBER	2004 %	2002-2004 NUMBER	2002-2004 %	2004 NUMBER	2004 %	2002-2004 NUMBER	2002-2004 %	2004 NUMBER	2004 %	2002-2004 NUMBER	2002-2004 %
<b>BIRTHS</b>												
WITHIN AREA	184	100.0	569	100.0	109	59.2	352	61.9	26	14.1	73	12.8
TO RESIDENTS	212	100.0	628	100.0	120	56.6	376	59.9	36	17.0	92	14.6
<b>FACILITY</b>												
HOSPITAL	208	98.1	616	98.1	117	97.5	365	97.1	35	97.2	91	98.9
BIRTHING CENTER	0	0.0	0	0.0	0	0.0	0	0.0	0	0.0	0	0.0
HOME	3	1.4	10	1.6	2	1.7	9	2.4	1	2.8	1	1.1
OTHER	0	0.0	0	0.0	0	0.0	0	0.0	0	0.0	0	0.0
OUTSIDE ALASKA	1	0.5	2	0.3	1	0.8	2	0.5	0	0.0	0	0.0
<b>MOTHER CHARACTERISTICS</b>												
<b>AGE GROUP</b>												
<15	0	0.0	0	0.0	0	0.0	0	0.0	0	0.0	0	0.0
15-19	23	10.8	54	8.6	13	10.8	34	9.1	7	19.4	13	14.1
20-24	50	23.6	160	25.5	26	21.7	94	25.1	6	16.7	22	23.9
25-29	56	26.4	181	28.9	36	30.0	112	29.9	10	27.8	25	27.2
30-34	48	22.6	137	21.9	28	23.3	78	20.8	8	22.2	23	25.0
35-39	27	12.7	67	10.7	13	10.8	40	10.7	5	13.9	8	8.7
40-44	8	3.8	26	4.1	4	3.3	15	4.0	0	0.0	1	1.1
45+	0	0.0	2	0.3	0	0.0	2	0.5	0	0.0	0	0.0
REPORTED DRINKING	0	0.0	5	0.8	0	0.0	4	1.1	0	0.0	1	1.1
REPORTED SMOKING	24	11.4	65	10.5	11	9.2	36	9.6	11	30.6	22	24.2
UNWED	59	27.8	170	27.1	21	17.5	65	17.3	19	52.8	46	50.0
<b>EDUCATION</b>												
<12 YEARS	28	13.5	69	11.3	14	11.8	37	10.0	7	20.6	14	15.6
12 YEARS	69	33.3	226	37.0	32	26.9	116	31.3	14	41.2	43	47.8
12+ YEARS	110	53.1	316	51.7	73	61.3	218	58.8	13	38.2	33	36.7
<b>PRENATAL CARE</b>												
<b>TRIMESTER CARE BEGAN</b>												
1ST TRIMESTER	174	83.7	519	84.1	104	86.7	327	87.4	33	91.7	82	90.1
3RD TRIMESTER	6	2.9	11	1.8	4	3.3	6	1.6	1	2.8	1	1.1
NO PRENATAL CARE	0	0.0	2	0.3	0	0.0	1	0.3	0	0.0	0	0.0
<b>APNCU INDEX</b>												
ADEQUATE+	33	16.8	108	18.2	20	17.4	69	19.0	7	20.0	20	23.3
ADEQUATE	85	43.1	245	41.3	57	49.6	169	46.6	12	34.3	28	32.6
INTERMEDIATE	54	27.4	166	28.0	27	23.5	95	26.2	12	34.3	29	33.7
INADEQUATE	25	12.7	74	12.5	11	9.6	30	8.3	4	11.4	9	10.5
<b>C-SECTION BIRTHS</b>	49	23.1	131	20.9	30	25.0	73	19.5	12	33.3	26	28.6
<b>PRE-TERM BIRTHS</b>	26	12.3	67	10.7	12	10.0	31	8.3	7	19.4	12	13.2
<b>LOW BIRTHWEIGHT</b>	20	9.4	48	7.7	6	5.0	20	5.3	6	16.7	8	8.8

Note: Unknown responses are excluded from the denominator when calculating percentages.

(1) Crude birth rate per 1,000 population.

(2) Teen birth rate per 1,000 female population ages 15-17, 18-19, or 15-19. Population estimates by census area for 15-17 and 18-19 are not available for 2003 or 2004. Therefore, rates for these age groups are not reported.

(3) Fertility rate per 1,000 female population ages 15-44. Population estimates by race by census area are only available for 2003 and 2004. Therefore, three year rates are not reported.

\* Rates based on fewer than 10 occurrences are statistically unreliable and should be used with caution.

\*\* Data suppressed for confidentiality concerns if total births to residents, by race, is less than five observations.

**TABLE 2 SELECTED BIRTH STATISTICS REPORTED BY MOTHER'S RACE:  
2004 AND 2002-2004  
LAKE AND PENINSULA BOROUGH**

	TOTAL				WHITE				NATIVE			
	2004 NUMBER	2004 RATE*	2002-2004 NUMBER	2002-2004 RATE*	2004 NUMBER	2004 RATE*	2002-2004 NUMBER	2002-2004 RATE*	2004 NUMBER	2004 RATE*	2002-2004 NUMBER	2002-2004 RATE*
<b>BIRTH RATES</b>												
CRUDE BIRTH RATE (1)	32	20.0	76	15.6	5	13.1*	20		27	22.7	55	
TEEN BIRTH RATE (2)												
15-17	0		4		0		1		0		3	
18-19	2		8		0		0		2		8	
15-19	2	23.8*	12	49.6	0	0.0	1		2	27.8*	11	
FERTILITY RATE (3)	32	95.5	76	77.1	5	64.1*	20		27	106.3	55	

	TOTAL				WHITE				NATIVE			
	2004 NUMBER	2004 %	2002-2004 NUMBER	2002-2004 %	2004 NUMBER	2004 %	2002-2004 NUMBER	2002-2004 %	2004 NUMBER	2004 %	2002-2004 NUMBER	2002-2004 %
<b>BIRTHS</b>												
WITHIN AREA	0	0.0	0	0.0	0	0.0	0	0.0	0	0.0	0	0.0
TO RESIDENTS	32	100.0	76	100.0	5	15.6	20	26.3	27	84.4	55	72.4
<b>FACILITY</b>												
HOSPITAL	30	93.8	71	93.4	3	60.0	15	75.0	27	100.0	55	100.0
BIRTHING CENTER	1	3.1	3	3.9	1	20.0	3	15.0	0	0.0	0	0.0
HOME	0	0.0	0	0.0	0	0.0	0	0.0	0	0.0	0	0.0
OTHER	0	0.0	0	0.0	0	0.0	0	0.0	0	0.0	0	0.0
OUTSIDE ALASKA	1	3.1	2	2.6	1	20.0	2	10.0	0	0.0	0	0.0
<b>MOTHER CHARACTERISTICS</b>												
<b>AGE GROUP</b>												
<15	0	0.0	0	0.0	0	0.0	0	0.0	0	0.0	0	0.0
15-19	2	6.3	12	15.8	0	0.0	1	5.0	2	7.4	11	20.0
20-24	14	43.8	28	36.8	0	0.0	2	10.0	14	51.9	26	47.3
25-29	7	21.9	16	21.1	1	20.0	5	25.0	6	22.2	11	20.0
30-34	4	12.5	11	14.5	2	40.0	8	40.0	2	7.4	2	3.6
35-39	2	6.3	6	7.9	0	0.0	2	10.0	2	7.4	4	7.3
40-44	3	9.4	3	3.9	2	40.0	2	10.0	1	3.7	1	1.8
45+	0	0.0	0	0.0	0	0.0	0	0.0	0	0.0	0	0.0
REPORTED DRINKING	1	3.2	3	4.0	0	0.0	2	10.5	1	3.7	1	1.8
REPORTED SMOKING	13	40.6	32	42.1	0	0.0	1	5.0	13	48.1	31	56.4
UNWED	20	62.5	45	60.0	0	0.0	2	10.5	20	74.1	43	78.2
<b>EDUCATION</b>												
<12 YEARS	6	18.8	15	19.7	0	0.0	2	10.0	6	22.2	13	23.6
12 YEARS	19	59.4	41	53.9	1	20.0	3	15.0	18	66.7	38	69.1
12+ YEARS	7	21.9	20	26.3	4	80.0	15	75.0	3	11.1	4	7.3
<b>PRENATAL CARE</b>												
<b>TRIMESTER CARE BEGAN</b>												
1ST TRIMESTER	24	75.0	58	77.3	3	60.0	16	80.0	21	77.8	41	75.9
3RD TRIMESTER	1	3.1	2	2.7	0	0.0	0	0.0	1	3.7	2	3.7
NO PRENATAL CARE	0	0.0	0	0.0	0	0.0	0	0.0	0	0.0	0	0.0
<b>APNCU INDEX</b>												
ADEQUATE+	6	18.8	22	29.3	1	20.0	5	25.0	5	18.5	16	29.6
ADEQUATE	8	25.0	14	18.7	1	20.0	4	20.0	7	25.9	10	18.5
INTERMEDIATE	10	31.3	21	28.0	2	40.0	6	30.0	8	29.6	15	27.8
INADEQUATE	8	25.0	18	24.0	1	20.0	5	25.0	7	25.9	13	24.1
<b>C-SECTION BIRTHS</b>	3	9.4	6	7.9	1	20.0	3	15.0	2	7.4	3	5.5
<b>PRE-TERM BIRTHS</b>	1	3.1	4	5.3	0	0.0	2	10.0	1	3.7	2	3.6
<b>LOW BIRTHWEIGHT</b>	0	0.0	2	2.6	0	0.0	2	10.0	0	0.0	0	0.0

Note: Unknown responses are excluded from the denominator when calculating percentages.

(1) Crude birth rate per 1,000 population.

(2) Teen birth rate per 1,000 female population ages 15-17, 18-19, or 15-19. Population estimates by census area for 15-17 and 18-19 are not available for 2003 or 2004. Therefore, rates for these age groups are not reported.

(3) Fertility rate per 1,000 female population ages 15-44. Population estimates by race by census area are only available for 2003 and 2004. Therefore, three year rates are not reported.

\* Rates based on fewer than 10 occurrences are statistically unreliable and should be used with caution.

\*\* Data suppressed for confidentiality concerns if total births to residents, by race, is less than five observations.

**TABLE 2 SELECTED BIRTH STATISTICS REPORTED BY MOTHER'S RACE:  
2004 AND 2002-2004  
MATANUSKA-SUSITNA BOROUGH**

	TOTAL				WHITE				NATIVE			
	2004 NUMBER	2004 RATE*	2002-2004 NUMBER	2002-2004 RATE*	2004 NUMBER	2004 RATE*	2002-2004 NUMBER	2002-2004 RATE*	2004 NUMBER	2004 RATE*	2002-2004 NUMBER	2002-2004 RATE*
<b>BIRTH RATES</b>												
CRUDE BIRTH RATE (1)	1,004	14.3	2,742	13.5	882	14.3	2,427		92	16.3	224	
TEEN BIRTH RATE (2)												
15-17	24		81		18		67		4		10	
18-19	77		202		66		176		9		20	
15-19	101	33.2	283	31.5	84	32.0	243		13	43.6	30	
FERTILITY RATE (3)	1,004	68.8	2,742	63.8	882	69.1	2,427		92	71.0	224	
	TOTAL				WHITE				NATIVE			
	2004 NUMBER	2004 %	2002-2004 NUMBER	2002-2004 %	2004 NUMBER	2004 %	2002-2004 NUMBER	2002-2004 %	2004 NUMBER	2004 %	2002-2004 NUMBER	2002-2004 %
<b>BIRTHS</b>												
WITHIN AREA	682	100.0	1,853	100.0	639	93.7	1,727	93.2	32	4.7	77	4.2
TO RESIDENTS	1,004	100.0	2,742	100.0	882	87.8	2,427	88.5	92	9.2	224	8.2
<b>FACILITY</b>												
HOSPITAL	891	88.7	2,423	88.4	771	87.4	2,122	87.4	91	98.9	220	98.2
BIRTHING CENTER	83	8.3	226	8.2	81	9.2	220	9.1	1	1.1	2	0.9
HOME	28	2.8	82	3.0	28	3.2	75	3.1	0	0.0	2	0.9
OTHER	0	0.0	0	0.0	0	0.0	0	0.0	0	0.0	0	0.0
OUTSIDE ALASKA	2	0.2	11	0.4	2	0.2	10	0.4	0	0.0	0	0.0
<b>MOTHER CHARACTERISTICS</b>												
AGE GROUP												
<15	0	0.0	7	0.3	0	0.0	6	0.2	0	0.0	1	0.4
15-19	101	10.1	283	10.3	84	9.5	243	10.0	13	14.1	30	13.4
20-24	303	30.2	756	27.6	254	28.8	649	26.8	40	43.5	82	36.6
25-29	265	26.4	760	27.7	241	27.3	693	28.6	16	17.4	50	22.3
30-34	206	20.5	559	20.4	187	21.2	495	20.4	14	15.2	41	18.3
35-39	96	9.6	281	10.3	84	9.5	250	10.3	9	9.8	20	8.9
40-44	30	3.0	88	3.2	29	3.3	84	3.5	0	0.0	0	0.0
45+	3	0.3	5	0.2	3	0.3	5	0.2	0	0.0	0	0.0
REPORTED DRINKING	13	1.3	38	1.4	10	1.1	29	1.2	3	3.3	7	3.1
REPORTED SMOKING	168	16.9	470	17.3	142	16.2	405	16.8	26	28.3	62	27.7
UNWED	290	28.9	786	28.7	233	26.4	659	27.2	47	51.1	101	45.1
EDUCATION												
<12 YEARS	124	13.2	345	13.2	100	12.1	288	12.4	19	21.3	47	21.6
12 YEARS	403	42.8	1,134	43.5	346	41.8	987	42.6	47	52.8	115	52.8
12+ YEARS	414	44.0	1,128	43.3	382	46.1	1,043	45.0	23	25.8	56	25.7
<b>PRENATAL CARE</b>												
TRIMESTER CARE BEGAN												
1ST TRIMESTER	794	81.4	2,101	78.8	711	82.8	1,872	79.3	66	71.7	165	74.3
3RD TRIMESTER	41	4.2	144	5.4	32	3.7	125	5.3	5	5.4	11	5.0
NO PRENATAL CARE	3	0.3	11	0.4	2	0.2	10	0.4	0	0.0	0	0.0
APNCU INDEX												
ADEQUATE+	317	34.1	828	32.4	303	37.1	765	33.9	10	11.2	40	18.5
ADEQUATE	378	40.6	1,066	41.8	341	41.8	963	42.6	29	32.6	74	34.3
INTERMEDIATE	111	11.9	275	10.8	79	9.7	215	9.5	26	29.2	50	23.1
INADEQUATE	124	13.3	383	15.0	93	11.4	316	14.0	24	27.0	52	24.1
<b>C-SECTION BIRTHS</b>	227	22.8	607	22.4	207	23.7	559	23.3	16	17.4	29	13.0
<b>PRE-TERM BIRTHS</b>	107	10.7	271	9.9	96	10.9	241	10.0	9	9.8	20	9.0
<b>LOW BIRTHWEIGHT</b>	68	6.8	155	5.7	61	6.9	141	5.8	5	5.4	11	4.9

Note: Unknown responses are excluded from the denominator when calculating percentages.

(1) Crude birth rate per 1,000 population.

(2) Teen birth rate per 1,000 female population ages 15-17, 18-19, or 15-19. Population estimates by census area for 15-17 and 18-19 are not available for 2003 or 2004. Therefore, rates for these age groups are not reported.

(3) Fertility rate per 1,000 female population ages 15-44. Population estimates by race by census area are only available for 2003 and 2004. Therefore, three year rates are not reported.

\* Rates based on fewer than 10 occurrences are statistically unreliable and should be used with caution.

\*\* Data suppressed for confidentiality concerns if total births to residents, by race, is less than five observations.

**TABLE 2 SELECTED BIRTH STATISTICS REPORTED BY MOTHER'S RACE:  
2004 AND 2002-2004  
NOME CENSUS AREA**

	TOTAL				WHITE				NATIVE			
	2004 NUMBER	2004 RATE*	2002-2004 NUMBER	2002-2004 RATE*	2004 NUMBER	2004 RATE*	2002-2004 NUMBER	2002-2004 RATE*	2004 NUMBER	2004 RATE*	2002-2004 NUMBER	2002-2004 RATE*
<b>BIRTH RATES</b>												
CRUDE BIRTH RATE (1)	230	24.5	637	22.7	16	8.2	61		211	29.0	567	
<b>TEEN BIRTH RATE (2)</b>												
15-17	17		44		2		2		15		42	
18-19	31		75		1		2		30		73	
15-19	48	104.1	119	91.3	3	55.6*	4		45	113.4	115	
FERTILITY RATE (3)	230	122.9	637	114.4	16	42.4	61		211	145.9	567	

	TOTAL				WHITE				NATIVE			
	2004 NUMBER	2004 %	2002-2004 NUMBER	2002-2004 %	2004 NUMBER	2004 %	2002-2004 NUMBER	2002-2004 %	2004 NUMBER	2004 %	2002-2004 NUMBER	2002-2004 %
<b>BIRTHS</b>												
WITHIN AREA	113	100.0	319	100.0	3	2.7	13	4.1	109	96.5	301	94.4
TO RESIDENTS	230	100.0	637	100.0	16	7.0	61	9.6	211	91.7	567	89.0
<b>FACILITY</b>												
HOSPITAL	227	98.7	627	98.4	14	87.5	55	90.2	210	99.5	564	99.5
BIRTHING CENTER	0	0.0	0	0.0	0	0.0	0	0.0	0	0.0	0	0.0
HOME	0	0.0	1	0.2	0	0.0	0	0.0	0	0.0	0	0.0
OTHER	1	0.4	3	0.5	0	0.0	0	0.0	1	0.5	3	0.5
OUTSIDE ALASKA	2	0.9	6	0.9	2	12.5	6	9.8	0	0.0	0	0.0
<b>MOTHER CHARACTERISTICS</b>												
<b>AGE GROUP</b>												
<15	1	0.4	5	0.8	0	0.0	0	0.0	1	0.5	5	0.9
15-19	48	20.9	119	18.7	3	18.8	4	6.6	45	21.3	115	20.3
20-24	76	33.0	173	27.2	1	6.3	13	21.3	75	35.5	159	28.0
25-29	53	23.0	168	26.4	5	31.3	10	16.4	46	21.8	154	27.2
30-34	34	14.8	107	16.8	2	12.5	18	29.5	31	14.7	87	15.3
35-39	13	5.7	51	8.0	5	31.3	16	26.2	8	3.8	33	5.8
40-44	5	2.2	14	2.2	0	0.0	0	0.0	5	2.4	14	2.5
45+	0	0.0	0	0.0	0	0.0	0	0.0	0	0.0	0	0.0
REPORTED DRINKING	21	9.2	61	9.7	0	0.0	0	0.0	21	10.0	61	10.8
REPORTED SMOKING	130	56.5	342	53.9	0	0.0	5	8.3	130	61.6	337	59.5
UNWED	163	70.9	422	66.2	3	18.8	11	18.0	160	75.8	411	72.5
<b>EDUCATION</b>												
<12 YEARS	65	28.8	182	29.1	1	7.1	5	8.9	64	30.5	176	31.2
12 YEARS	134	59.3	362	57.8	2	14.3	14	25.0	132	62.9	348	61.7
12+ YEARS	27	11.9	82	13.1	11	78.6	37	66.1	14	6.7	40	7.1
<b>PRENATAL CARE</b>												
<b>TRIMESTER CARE BEGAN</b>												
1ST TRIMESTER	164	71.9	463	74.2	13	81.3	52	86.7	149	71.3	404	72.7
3RD TRIMESTER	13	5.7	28	4.5	1	6.3	2	3.3	12	5.7	26	4.7
NO PRENATAL CARE	0	0.0	2	0.3	0	0.0	0	0.0	0	0.0	2	0.4
<b>APNCU INDEX</b>												
ADEQUATE+	34	14.9	134	21.5	1	6.3	13	22.0	33	15.8	120	21.5
ADEQUATE	77	33.8	195	31.3	4	25.0	24	40.7	72	34.4	167	30.0
INTERMEDIATE	68	29.8	169	27.1	9	56.3	17	28.8	58	27.8	151	27.1
INADEQUATE	49	21.5	126	20.2	2	12.5	5	8.5	46	22.0	119	21.4
<b>C-SECTION BIRTHS</b>	19	8.4	47	7.5	4	25.0	14	23.3	15	7.2	33	5.9
<b>PRE-TERM BIRTHS</b>	36	15.7	92	14.5	5	31.3	7	11.5	31	14.7	85	15.0
<b>LOW BIRTHWEIGHT</b>	21	9.1	46	7.3	6	37.5	8	13.1	15	7.1	38	6.7

Note: Unknown responses are excluded from the denominator when calculating percentages.

(1) Crude birth rate per 1,000 population.

(2) Teen birth rate per 1,000 female population ages 15-17, 18-19, or 15-19. Population estimates by census area for 15-17 and 18-19 are not available for 2003 or 2004. Therefore, rates for these age groups are not reported.

(3) Fertility rate per 1,000 female population ages 15-44. Population estimates by race by census area are only available for 2003 and 2004. Therefore, three year rates are not reported.

\* Rates based on fewer than 10 occurrences are statistically unreliable and should be used with caution.

\*\* Data suppressed for confidentiality concerns if total births to residents, by race, is less than five observations.

**TABLE 2** **SELECTED BIRTH STATISTICS REPORTED BY MOTHER'S RACE:**  
**2004 AND 2002-2004**  
**NORTH SLOPE BOROUGH**

	TOTAL				WHITE				NATIVE			
	2004 NUMBER	2004 RATE*	2002-2004 NUMBER	2002-2004 RATE*	2004 NUMBER	2004 RATE*	2002-2004 NUMBER	2002-2004 RATE*	2004 NUMBER	2004 RATE*	2002-2004 NUMBER	2002-2004 RATE*
<b>BIRTH RATES</b>												
CRUDE BIRTH RATE (1)	169	23.8	499	23.1	18	12.4	38		144	29.4	436	
TEEN BIRTH RATE (2)												
15-17	9		32		1		1		8		31	
18-19	21		65		0		3		21		61	
15-19	30	86.0	97	88.5	1	23.3*	4		29	101.8	92	
FERTILITY RATE (3)	169	115.9	499	109.9	18	61.4	38		144	141.6	436	

	TOTAL				WHITE				NATIVE			
	2004 NUMBER	2004 %	2002-2004 NUMBER	2002-2004 %	2004 NUMBER	2004 %	2002-2004 NUMBER	2002-2004 %	2004 NUMBER	2004 %	2002-2004 NUMBER	2002-2004 %
<b>BIRTHS</b>												
WITHIN AREA	63	100.0	122	100.0	1	1.6	2	1.6	60	95.2	115	94.3
TO RESIDENTS	169	100.0	499	100.0	18	10.7	38	7.6	144	85.2	436	87.4
<b>FACILITY</b>												
HOSPITAL	164	97.0	484	97.0	14	77.8	29	76.3	143	99.3	432	99.1
BIRTHING CENTER	1	0.6	2	0.4	1	5.6	1	2.6	0	0.0	1	0.2
HOME	0	0.0	1	0.2	0	0.0	0	0.0	0	0.0	1	0.2
OTHER	0	0.0	0	0.0	0	0.0	0	0.0	0	0.0	0	0.0
OUTSIDE ALASKA	4	2.4	12	2.4	3	16.7	8	21.1	1	0.7	2	0.5
<b>MOTHER CHARACTERISTICS</b>												
AGE GROUP												
<15	1	0.6	1	0.2	0	0.0	0	0.0	1	0.7	1	0.2
15-19	30	17.8	97	19.6	1	5.6	4	11.4	29	20.1	92	21.1
20-24	51	30.2	153	30.8	2	11.1	8	22.9	48	33.3	141	32.3
25-29	49	29.0	123	24.8	7	38.9	10	28.6	40	27.8	106	24.3
30-34	24	14.2	72	14.5	3	16.7	7	20.0	18	12.5	57	13.1
35-39	13	7.7	44	8.9	5	27.8	6	17.1	7	4.9	33	7.6
40-44	1	0.6	5	1.0	0	0.0	0	0.0	1	0.7	5	1.1
45+	0	0.0	1	0.2	0	0.0	0	0.0	0	0.0	1	0.2
REPORTED DRINKING	8	4.8	25	5.1	0	0.0	1	2.9	8	5.6	24	5.5
REPORTED SMOKING	71	42.5	225	45.5	2	11.8	3	8.3	69	48.3	222	51.2
UNWED	114	67.5	315	63.3	4	22.2	8	21.1	109	75.7	303	69.5
EDUCATION												
<12 YEARS	37	22.6	125	25.9	1	6.7	1	2.9	36	25.4	124	29.2
12 YEARS	95	57.9	275	56.9	3	20.0	13	38.2	90	63.4	252	59.3
12+ YEARS	32	19.5	83	17.2	11	73.3	20	58.8	16	11.3	49	11.5
<b>PRENATAL CARE</b>												
TRIMESTER CARE BEGAN												
1ST TRIMESTER	109	68.1	318	66.9	17	94.4	32	86.5	86	63.7	268	64.4
3RD TRIMESTER	12	7.5	51	10.7	0	0.0	3	8.1	12	8.9	47	11.3
NO PRENATAL CARE	5	3.1	7	1.5	0	0.0	0	0.0	5	3.6	7	1.7
APNCU INDEX												
ADEQUATE+	16	9.9	44	9.3	2	11.8	4	11.1	10	7.3	34	8.1
ADEQUATE	34	21.1	121	25.5	7	41.2	14	38.9	26	19.0	99	23.7
INTERMEDIATE	52	32.3	139	29.3	6	35.3	12	33.3	45	32.8	125	29.9
INADEQUATE	59	36.6	171	36.0	2	11.8	6	16.7	56	40.9	160	38.3
<b>C-SECTION BIRTHS</b>	14	8.4	45	9.1	4	22.2	7	18.9	8	5.6	31	7.1
<b>PRE-TERM BIRTHS</b>	27	16.1	72	14.5	2	11.1	3	7.9	23	16.1	66	15.2
<b>LOW BIRTHWEIGHT</b>	9	5.6	27	5.5	2	11.1	2	5.3	5	3.6	21	4.9

Note: Unknown responses are excluded from the denominator when calculating percentages.

- (1) Crude birth rate per 1,000 population.
- (2) Teen birth rate per 1,000 female population ages 15-17, 18-19, or 15-19. Population estimates by census area for 15-17 and 18-19 are not available for 2003 or 2004. Therefore, rates for these age groups are not reported.
- (3) Fertility rate per 1,000 female population ages 15-44. Population estimates by race by census area are only available for 2003 and 2004. Therefore, three year rates are not reported.

\* Rates based on fewer than 10 occurrences are statistically unreliable and should be used with caution.

\*\* Data suppressed for confidentiality concerns if total births to residents, by race, is less than five observations.

**TABLE 2**                      **SELECTED BIRTH STATISTICS REPORTED BY MOTHER'S RACE:**  
**2004 AND 2002-2004**  
**NORTHWEST ARCTIC BOROUGH**

	TOTAL				WHITE				NATIVE			
	2004 NUMBER	2004 RATE*	2002-2004 NUMBER	2002-2004 RATE*	2004 NUMBER	2004 RATE*	2002-2004 NUMBER	2002-2004 RATE*	2004 NUMBER	2004 RATE*	2002-2004 NUMBER	2002-2004 RATE*
<b>BIRTH RATES</b>												
CRUDE BIRTH RATE (1)	177	24.2	493	22.5	11	10.2	33		163	26.8	456	
TEEN BIRTH RATE (2)												
15-17	16		36		0		2		16		34	
18-19	21		59		0		0		21		59	
15-19	37	89.6	95	80.5	0	0.0	2		37	98.4	93	
FERTILITY RATE (3)	177	116.7	493	109.5	11	52.9	33		163	128.8	456	

	TOTAL				WHITE				NATIVE			
	2004 NUMBER	2004 %	2002-2004 NUMBER	2002-2004 %	2004 NUMBER	2004 %	2002-2004 NUMBER	2002-2004 %	2004 NUMBER	2004 %	2002-2004 NUMBER	2002-2004 %
<b>BIRTHS</b>												
WITHIN AREA	81	100.0	242	100.0	2	2.5	9	3.7	78	96.3	232	95.9
TO RESIDENTS	177	100.0	493	100.0	11	6.2	33	6.7	163	92.1	456	92.5
<b>FACILITY</b>												
HOSPITAL	175	98.9	487	98.8	9	81.8	28	84.8	163	100.0	455	99.8
BIRTHING CENTER	0	0.0	1	0.2	0	0.0	1	3.0	0	0.0	0	0.0
HOME	0	0.0	1	0.2	0	0.0	0	0.0	0	0.0	1	0.2
OTHER	0	0.0	0	0.0	0	0.0	0	0.0	0	0.0	0	0.0
OUTSIDE ALASKA	2	1.1	4	0.8	2	18.2	4	12.1	0	0.0	0	0.0
<b>MOTHER CHARACTERISTICS</b>												
AGE GROUP												
<15	1	0.6	3	0.6	0	0.0	0	0.0	1	0.6	3	0.7
15-19	37	20.9	95	19.3	0	0.0	2	6.1	37	22.7	93	20.4
20-24	42	23.7	148	30.0	2	18.2	5	15.2	40	24.5	142	31.1
25-29	44	24.9	117	23.7	4	36.4	11	33.3	39	23.9	105	23.0
30-34	36	20.3	78	15.8	3	27.3	8	24.2	31	19.0	68	14.9
35-39	14	7.9	41	8.3	1	9.1	5	15.2	13	8.0	36	7.9
40-44	3	1.7	10	2.0	1	9.1	2	6.1	2	1.2	8	1.8
45+	0	0.0	1	0.2	0	0.0	0	0.0	0	0.0	1	0.2
REPORTED DRINKING	4	2.3	18	3.7	0	0.0	2	6.1	4	2.5	16	3.6
REPORTED SMOKING	69	39.0	223	45.7	1	9.1	4	12.1	68	41.7	219	48.5
UNWED	122	68.9	342	69.5	2	18.2	9	27.3	119	73.0	332	72.8
EDUCATION												
<12 YEARS	66	38.2	187	39.2	0	0.0	2	6.7	66	41.0	185	41.6
12 YEARS	84	48.6	233	48.8	0	0.0	4	13.3	84	52.2	229	51.5
12+ YEARS	23	13.3	57	11.9	10	100.0	24	80.0	11	6.8	31	7.0
<b>PRENATAL CARE</b>												
TRIMESTER CARE BEGAN												
1ST TRIMESTER	124	72.1	336	70.4	9	81.8	27	81.8	113	71.1	307	69.5
3RD TRIMESTER	4	2.3	24	5.0	0	0.0	3	9.1	4	2.5	21	4.8
NO PRENATAL CARE	3	1.7	4	0.8	0	0.0	0	0.0	3	1.9	4	0.9
APNCU INDEX												
ADEQUATE+	26	15.0	85	17.8	2	20.0	8	25.0	24	14.9	77	17.3
ADEQUATE	45	26.0	121	25.3	4	40.0	10	31.3	39	24.2	109	24.5
INTERMEDIATE	53	30.6	131	27.4	3	30.0	7	21.9	50	31.1	124	27.9
INADEQUATE	49	28.3	141	29.5	1	10.0	7	21.9	48	29.8	134	30.2
<b>C-SECTION BIRTHS</b>	16	9.0	41	8.4	1	9.1	4	12.1	14	8.6	36	7.9
<b>PRE-TERM BIRTHS</b>	17	9.6	50	10.2	1	9.1	1	3.0	16	9.8	49	10.8
<b>LOW BIRTHWEIGHT</b>	11	6.2	30	6.1	2	18.2	2	6.1	9	5.5	28	6.2

Note: Unknown responses are excluded from the denominator when calculating percentages.

(1) Crude birth rate per 1,000 population.

(2) Teen birth rate per 1,000 female population ages 15-17, 18-19, or 15-19. Population estimates by census area for 15-17 and 18-19 are not available for 2003 or 2004. Therefore, rates for these age groups are not reported.

(3) Fertility rate per 1,000 female population ages 15-44. Population estimates by race by census area are only available for 2003 and 2004. Therefore, three year rates are not reported.

\* Rates based on fewer than 10 occurrences are statistically unreliable and should be used with caution.

\*\* Data suppressed for confidentiality concerns if total births to residents, by race, is less than five observations.



**TABLE 2**                      **SELECTED BIRTH STATISTICS REPORTED BY MOTHER'S RACE:**  
**2004 AND 2002-2004**  
**PRINCE OF WALES-OUTER KETCHIKAN CENSUS AREA**

	TOTAL				WHITE				NATIVE			
	2004 NUMBER	2004 RATE*	2002-2004 NUMBER	2002-2004 RATE*	2004 NUMBER	2004 RATE*	2002-2004 NUMBER	2002-2004 RATE*	2004 NUMBER	2004 RATE*	2002-2004 NUMBER	2002-2004 RATE*
<b>BIRTH RATES</b>												
CRUDE BIRTH RATE (1)	57	10.3	176	10.5	23	7.6	74		31	13.0		93
TEEN BIRTH RATE (2)												
15-17	3		9		0		3		3			5
18-19	6		23		3		10		3			13
15-19	9	38.3 *	32	44.9	3	25.2 *	13		6	56.1 *		18
FERTILITY RATE (3)	57	54.8	176	54.1	23	41.4	74		31	67.8		93
	TOTAL				WHITE				NATIVE			
	2004 NUMBER	2004 %	2002-2004 NUMBER	2002-2004 %	2004 NUMBER	2004 %	2002-2004 NUMBER	2002-2004 %	2004 NUMBER	2004 %	2002-2004 NUMBER	2002-2004 %
<b>BIRTHS</b>												
WITHIN AREA	2	100.0	5	100.0	2	100.0	4	80.0	0	0.0	1	20.0
TO RESIDENTS	57	100.0	176	100.0	23	40.4	74	42.0	31	54.4	93	52.8
<b>FACILITY</b>												
HOSPITAL	46	80.7	146	83.0	15	65.2	54	73.0	29	93.5	85	91.4
BIRTHING CENTER	2	3.5	3	1.7	1	4.3	2	2.7	0	0.0	0	0.0
HOME	6	10.5	17	9.7	5	21.7	13	17.6	1	3.2	4	4.3
OTHER	1	1.8	2	1.1	1	4.3	1	1.4	0	0.0	1	1.1
OUTSIDE ALASKA	2	3.5	8	4.5	1	4.3	4	5.4	1	3.2	3	3.2
<b>MOTHER CHARACTERISTICS</b>												
<b>AGE GROUP</b>												
<15	0	0.0	0	0.0	0	0.0	0	0.0	0	0.0	0	0.0
15-19	9	15.8	32	18.3	3	13.0	13	17.6	6	19.4	18	19.4
20-24	22	38.6	61	34.9	8	34.8	26	35.1	14	45.2	33	35.5
25-29	7	12.3	35	20.0	3	13.0	13	17.6	3	9.7	21	22.6
30-34	13	22.8	30	17.1	6	26.1	14	18.9	7	22.6	15	16.1
35-39	6	10.5	13	7.4	3	13.0	5	6.8	1	3.2	5	5.4
40-44	0	0.0	4	2.3	0	0.0	3	4.1	0	0.0	1	1.1
45+	0	0.0	0	0.0	0	0.0	0	0.0	0	0.0	0	0.0
REPORTED DRINKING	1	1.8	1	0.6	1	4.5	1	1.4	0	0.0	0	0.0
REPORTED SMOKING	9	15.8	30	17.1	4	17.4	18	24.3	4	12.9	11	11.8
UNWED	28	49.1	90	51.1	6	26.1	26	35.1	21	67.7	61	65.6
<b>EDUCATION</b>												
<12 YEARS	8	14.0	26	15.1	2	8.7	9	12.3	6	19.4	17	18.9
12 YEARS	28	49.1	90	52.3	10	43.5	35	47.9	17	54.8	50	55.6
12+ YEARS	21	36.8	56	32.6	11	47.8	29	39.7	8	25.8	23	25.6
<b>PRENATAL CARE</b>												
<b>TRIMESTER CARE BEGAN</b>												
1ST TRIMESTER	36	63.2	123	71.5	15	65.2	52	72.2	21	67.7	67	73.6
3RD TRIMESTER	6	10.5	9	5.2	2	8.7	3	4.2	3	9.7	5	5.5
NO PRENATAL CARE	0	0.0	2	1.1	0	0.0	2	2.7	0	0.0	0	0.0
<b>APNCU INDEX</b>												
ADEQUATE+	6	10.5	30	17.2	5	21.7	12	16.2	1	3.2	17	18.7
ADEQUATE	23	40.4	79	45.4	7	30.4	34	45.9	16	51.6	43	47.3
INTERMEDIATE	12	21.1	27	15.5	5	21.7	13	17.6	7	22.6	13	14.3
INADEQUATE	16	28.1	38	21.8	6	26.1	15	20.3	7	22.6	18	19.8
<b>C-SECTION BIRTHS</b>	13	22.8	40	22.7	7	30.4	19	25.7	5	16.1	19	20.4
<b>PRE-TERM BIRTHS</b>	4	7.0	17	9.7	2	8.7	6	8.1	2	6.5	10	10.8
<b>LOW BIRTHWEIGHT</b>	2	3.5	6	3.4	2	8.7	4	5.4	0	0.0	1	1.1

Note: Unknown responses are excluded from the denominator when calculating percentages.

(1) Crude birth rate per 1,000 population.

(2) Teen birth rate per 1,000 female population ages 15-17, 18-19, or 15-19. Population estimates by census area for 15-17 and 18-19 are not available for 2003 or 2004. Therefore, rates for these age groups are not reported.

(3) Fertility rate per 1,000 female population ages 15-44. Population estimates by race by census area are only available for 2003 and 2004. Therefore, three year rates are not reported.

\* Rates based on fewer than 10 occurrences are statistically unreliable and should be used with caution.

\*\* Data suppressed for confidentiality concerns if total births to residents, by race, is less than five observations.

**TABLE 2 SELECTED BIRTH STATISTICS REPORTED BY MOTHER'S RACE:  
2004 AND 2002-2004  
SITKA BOROUGH**

	TOTAL				WHITE				NATIVE			
	2004 NUMBER	2004 RATE*	2002-2004 NUMBER	2002-2004 RATE*	2004 NUMBER	2004 RATE*	2002-2004 NUMBER	2002-2004 RATE*	2004 NUMBER	2004 RATE*	2002-2004 NUMBER	2002-2004 RATE*
<b>BIRTH RATES</b>												
CRUDE BIRTH RATE (1)	108	12.3	347	13.0	60	9.8	217		34	16.8	105	
TEEN BIRTH RATE (2)												
15-17	2		7		0		1		2		6	
18-19	5		22		2		10		2		11	
15-19	7	20.1*	29	27.4	2	8.9*	11		4	40.0*	17	
FERTILITY RATE (3)	108	60.3	347	63.2	60	49.5	217		34	79.4	105	

	TOTAL				WHITE				NATIVE			
	2004 NUMBER	2004 %	2002-2004 NUMBER	2002-2004 %	2004 NUMBER	2004 %	2002-2004 NUMBER	2002-2004 %	2004 NUMBER	2004 %	2002-2004 NUMBER	2002-2004 %
<b>BIRTHS</b>												
WITHIN AREA	113	100.0	349	100.0	59	52.2	209	59.9	41	36.3	119	34.1
TO RESIDENTS	108	100.0	347	100.0	60	55.6	217	62.5	34	31.5	105	30.3
<b>FACILITY</b>												
HOSPITAL	105	97.2	336	96.8	58	96.7	207	95.4	34	100.0	105	100.0
BIRTHING CENTER	0	0.0	0	0.0	0	0.0	0	0.0	0	0.0	0	0.0
HOME	1	0.9	3	0.9	0	0.0	2	0.9	0	0.0	0	0.0
OTHER	0	0.0	0	0.0	0	0.0	0	0.0	0	0.0	0	0.0
OUTSIDE ALASKA	2	1.9	8	2.3	2	3.3	8	3.7	0	0.0	0	0.0
<b>MOTHER CHARACTERISTICS</b>												
AGE GROUP												
<15	0	0.0	0	0.0	0	0.0	0	0.0	0	0.0	0	0.0
15-19	7	6.5	29	8.4	2	3.3	11	5.1	4	11.8	17	16.2
20-24	27	25.0	84	24.2	11	18.3	40	18.4	14	41.2	39	37.1
25-29	39	36.1	101	29.1	23	38.3	65	30.0	11	32.4	26	24.8
30-34	19	17.6	69	19.9	14	23.3	55	25.3	4	11.8	12	11.4
35-39	12	11.1	51	14.7	8	13.3	39	18.0	0	0.0	7	6.7
40-44	4	3.7	13	3.7	2	3.3	7	3.2	1	2.9	4	3.8
45+	0	0.0	0	0.0	0	0.0	0	0.0	0	0.0	0	0.0
REPORTED DRINKING	4	3.8	8	2.4	2	3.4	4	1.9	2	5.9	4	3.8
REPORTED SMOKING	10	9.3	37	10.7	4	6.7	15	6.9	4	11.8	20	19.0
UNWED	38	35.2	128	37.0	15	25.0	58	26.7	20	58.8	66	62.9
EDUCATION												
<12 YEARS	7	6.7	30	8.9	2	3.4	12	5.6	4	12.1	17	17.0
12 YEARS	44	41.9	117	34.8	18	30.5	59	27.7	20	60.6	50	50.0
12+ YEARS	54	51.4	189	56.3	39	66.1	142	66.7	9	27.3	33	33.0
<b>PRENATAL CARE</b>												
TRIMESTER CARE BEGAN												
1ST TRIMESTER	79	74.5	248	72.9	44	74.6	160	75.1	26	76.5	71	68.3
3RD TRIMESTER	7	6.6	28	8.2	4	6.8	16	7.5	3	8.8	11	10.6
NO PRENATAL CARE	0	0.0	0	0.0	0	0.0	0	0.0	0	0.0	0	0.0
APNCU INDEX												
ADEQUATE+	34	32.1	87	25.7	15	25.4	45	21.2	13	38.2	34	32.7
ADEQUATE	46	43.4	124	36.7	31	52.5	88	41.5	11	32.4	30	28.8
INTERMEDIATE	7	6.6	50	14.8	3	5.1	35	16.5	2	5.9	9	8.7
INADEQUATE	19	17.9	77	22.8	10	16.9	44	20.8	8	23.5	31	29.8
<b>C-SECTION BIRTHS</b>	29	27.4	92	27.1	17	28.8	61	28.6	9	26.5	24	23.5
<b>PRE-TERM BIRTHS</b>	13	12.1	37	10.7	5	8.3	18	8.3	5	14.7	13	12.4
<b>LOW BIRTHWEIGHT</b>	5	4.7	17	4.9	2	3.3	8	3.7	2	5.9	5	4.8

Note: Unknown responses are excluded from the denominator when calculating percentages.

(1) Crude birth rate per 1,000 population.

(2) Teen birth rate per 1,000 female population ages 15-17, 18-19, or 15-19. Population estimates by census area for 15-17 and 18-19 are not available for 2003 or 2004. Therefore, rates for these age groups are not reported.

(3) Fertility rate per 1,000 female population ages 15-44. Population estimates by race by census area are only available for 2003 and 2004. Therefore, three year rates are not reported.

\* Rates based on fewer than 10 occurrences are statistically unreliable and should be used with caution.

\*\* Data suppressed for confidentiality concerns if total births to residents, by race, is less than five observations.

**TABLE 2**                      **SELECTED BIRTH STATISTICS REPORTED BY MOTHER'S RACE:**  
**2004 AND 2002-2004**  
**SKAGWAY-HOONAH-ANGOON CENSUS AREA**

	TOTAL				WHITE				NATIVE			
	2004 NUMBER	2004 RATE*	2002-2004 NUMBER	2002-2004 RATE*	2004 NUMBER	2004 RATE*	2002-2004 NUMBER	2002-2004 RATE*	2004 NUMBER	2004 RATE*	2002-2004 NUMBER	2002-2004 RATE*
<b>BIRTH RATES</b>												
CRUDE BIRTH RATE (1)	32	10.3	90	9.5	12	6.2	42		17	15.7	37	
TEEN BIRTH RATE (2)												
15-17	0		0		0		0		0		0	
18-19	2		3		0		0		2		3	
15-19	2	18.5*	3	8.8*	0	0.0	0		2	39.2*	3	
FERTILITY RATE (3)	32	55.2	90	50.2	12	35.0	42		17	78.3	37	
	2004 NUMBER	2004 %	2002-2004 NUMBER	2002-2004 %	2004 NUMBER	2004 %	2002-2004 NUMBER	2002-2004 %	2004 NUMBER	2004 %	2002-2004 NUMBER	2002-2004 %
<b>BIRTHS</b>												
WITHIN AREA	0	0.0	1	100.0	0	0.0	0	0.0	0	0.0	1	100.0
TO RESIDENTS	32	100.0	90	100.0	12	37.5	42	46.7	17	53.1	37	41.1
<b>FACILITY</b>												
HOSPITAL	23	71.9	60	66.7	6	50.0	25	59.5	17	100.0	34	91.9
BIRTHING CENTER	5	15.6	15	16.7	4	33.3	12	28.6	0	0.0	2	5.4
HOME	0	0.0	0	0.0	0	0.0	0	0.0	0	0.0	0	0.0
OTHER	0	0.0	2	2.2	0	0.0	1	2.4	0	0.0	1	2.7
OUTSIDE ALASKA	4	12.5	13	14.4	2	16.7	4	9.5	0	0.0	0	0.0
<b>MOTHER CHARACTERISTICS</b>												
AGE GROUP												
<15	0	0.0	0	0.0	0	0.0	0	0.0	0	0.0	0	0.0
15-19	2	6.3	3	3.4	0	0.0	0	0.0	2	11.8	3	8.1
20-24	11	34.4	28	31.5	4	33.3	11	26.8	7	41.2	16	43.2
25-29	10	31.3	28	31.5	4	33.3	11	26.8	5	29.4	14	37.8
30-34	6	18.8	18	20.2	3	25.0	11	26.8	2	11.8	3	8.1
35-39	3	9.4	11	12.4	1	8.3	7	17.1	1	5.9	1	2.7
40-44	0	0.0	1	1.1	0	0.0	1	2.4	0	0.0	0	0.0
45+	0	0.0	0	0.0	0	0.0	0	0.0	0	0.0	0	0.0
REPORTED DRINKING	0	0.0	1	1.3	0	0.0	1	2.6	0	0.0	0	0.0
REPORTED SMOKING	5	17.2	13	16.7	1	8.3	5	12.2	4	25.0	8	22.9
UNWED	15	50.0	33	41.3	3	25.0	9	22.0	12	70.6	24	64.9
EDUCATION												
<12 YEARS	5	16.7	13	16.7	0	0.0	1	2.5	5	29.4	12	33.3
12 YEARS	14	46.7	31	39.7	5	41.7	13	32.5	9	52.9	18	50.0
12+ YEARS	11	36.7	34	43.6	7	58.3	26	65.0	3	17.6	6	16.7
<b>PRENATAL CARE</b>												
TRIMESTER CARE BEGAN												
1ST TRIMESTER	21	75.0	60	87.0	7	58.3	33	86.8	14	93.3	26	89.7
3RD TRIMESTER	2	7.1	4	5.8	0	0.0	0	0.0	1	6.7	3	10.3
NO PRENATAL CARE	0	0.0	0	0.0	0	0.0	0	0.0	0	0.0	0	0.0
APNCU INDEX												
ADEQUATE+	5	18.5	19	31.7	2	16.7	9	27.3	3	21.4	10	40.0
ADEQUATE	6	22.2	16	26.7	3	25.0	12	36.4	3	21.4	3	12.0
INTERMEDIATE	8	29.6	14	23.3	3	25.0	7	21.2	5	35.7	7	28.0
INADEQUATE	8	29.6	11	18.3	4	33.3	5	15.2	3	21.4	5	20.0
<b>C-SECTION BIRTHS</b>	10	33.3	25	31.3	2	16.7	14	34.1	8	47.1	11	29.7
<b>PRE-TERM BIRTHS</b>	3	10.7	11	14.7	1	8.3	5	12.8	2	13.3	6	17.6
<b>LOW BIRTHWEIGHT</b>	2	6.7	5	6.3	0	0.0	2	4.9	2	11.8	3	8.1

Note: Unknown responses are excluded from the denominator when calculating percentages.

(1) Crude birth rate per 1,000 population.

(2) Teen birth rate per 1,000 female population ages 15-17, 18-19, or 15-19. Population estimates by census area for 15-17 and 18-19 are not available for 2003 or 2004. Therefore, rates for these age groups are not reported.

(3) Fertility rate per 1,000 female population ages 15-44. Population estimates by race by census area are only available for 2003 and 2004. Therefore, three year rates are not reported.

\* Rates based on fewer than 10 occurrences are statistically unreliable and should be used with caution.

\*\* Data suppressed for confidentiality concerns if total births to residents, by race, is less than five observations.

**TABLE 2 SELECTED BIRTH STATISTICS REPORTED BY MOTHER'S RACE:  
2004 AND 2002-2004  
SOUTHEAST FAIRBANKS CENSUS AREA**

	TOTAL				WHITE				NATIVE			
	2004 NUMBER	2004 RATE*	2002-2004 NUMBER	2002-2004 RATE*	2004 NUMBER	2004 RATE*	2002-2004 NUMBER	2002-2004 RATE*	2004 NUMBER	2004 RATE*	2002-2004 NUMBER	2002-2004 RATE*
<b>BIRTH RATES</b>												
CRUDE BIRTH RATE (1)	87	14.1	255	14.1	70	13.9	194		14	14.8	52	
TEEN BIRTH RATE (2)												
15-17	1		6		0		3		0		2	
18-19	9		19		8		13		1		5	
15-19	10	37.2	25	33.1	8	37.6*	16		1	21.3*	7	
FERTILITY RATE (3)	87	77.7	255	78.7	70	78.4	194		14	78.7	52	

	TOTAL				WHITE				NATIVE			
	2004 NUMBER	2004 %	2002-2004 NUMBER	2002-2004 %	2004 NUMBER	2004 %	2002-2004 NUMBER	2002-2004 %	2004 NUMBER	2004 %	2002-2004 NUMBER	2002-2004 %
<b>BIRTHS</b>												
WITHIN AREA	3	100.0	17	100.0	3	100.0	16	94.1	0	0.0	0	0.0
TO RESIDENTS	87	100.0	255	100.0	70	80.5	194	76.1	14	16.1	52	20.4
<b>FACILITY</b>												
HOSPITAL	76	87.4	222	87.1	60	85.7	163	84.0	13	92.9	51	98.1
BIRTHING CENTER	7	8.0	13	5.1	6	8.6	12	6.2	1	7.1	1	1.9
HOME	2	2.3	14	5.5	2	2.9	13	6.7	0	0.0	0	0.0
OTHER	1	1.1	4	1.6	1	1.4	4	2.1	0	0.0	0	0.0
OUTSIDE ALASKA	1	1.1	2	0.8	1	1.4	2	1.0	0	0.0	0	0.0
<b>MOTHER CHARACTERISTICS</b>												
<b>AGE GROUP</b>												
<15	0	0.0	0	0.0	0	0.0	0	0.0	0	0.0	0	0.0
15-19	10	11.5	25	9.8	8	11.4	16	8.2	1	7.1	7	13.5
20-24	27	31.0	66	25.9	18	25.7	44	22.7	9	64.3	22	42.3
25-29	18	20.7	56	22.0	15	21.4	43	22.2	3	21.4	12	23.1
30-34	13	14.9	44	17.3	12	17.1	38	19.6	0	0.0	4	7.7
35-39	14	16.1	42	16.5	12	17.1	35	18.0	1	7.1	5	9.6
40-44	5	5.7	21	8.2	5	7.1	17	8.8	0	0.0	2	3.8
45+	0	0.0	1	0.4	0	0.0	1	0.5	0	0.0	0	0.0
REPORTED DRINKING	1	1.1	2	0.8	1	1.4	1	0.5	0	0.0	1	1.9
REPORTED SMOKING	10	11.5	41	16.1	9	12.9	26	13.4	1	7.1	15	28.8
UNWED	22	25.3	72	28.2	9	12.9	26	13.4	12	85.7	44	84.6
<b>EDUCATION</b>												
<12 YEARS	12	13.8	35	14.3	8	11.4	23	12.4	3	21.4	11	21.6
12 YEARS	45	51.7	119	48.6	35	50.0	88	47.3	10	71.4	31	60.8
12+ YEARS	30	34.5	91	37.1	27	38.6	75	40.3	1	7.1	9	17.6
<b>PRENATAL CARE</b>												
<b>TRIMESTER CARE BEGAN</b>												
1ST TRIMESTER	45	57.0	123	52.3	36	56.3	90	50.8	8	61.5	28	54.9
3RD TRIMESTER	6	7.6	32	13.6	6	9.4	28	15.8	0	0.0	4	7.8
NO PRENATAL CARE	0	0.0	2	0.9	0	0.0	2	1.1	0	0.0	0	0.0
<b>APNCU INDEX</b>												
ADEQUATE+	7	9.1	17	7.3	4	6.5	11	6.3	3	23.1	5	9.8
ADEQUATE	21	27.3	54	23.1	18	29.0	44	25.0	3	23.1	10	19.6
INTERMEDIATE	23	29.9	58	24.8	20	32.3	39	22.2	2	15.4	15	29.4
INADEQUATE	26	33.8	105	44.9	20	32.3	82	46.6	5	38.5	21	41.2
<b>C-SECTION BIRTHS</b>	14	16.1	48	18.9	12	17.1	32	16.6	2	14.3	13	25.0
<b>PRE-TERM BIRTHS</b>	8	9.3	27	10.7	5	7.2	18	9.3	2	14.3	7	13.5
<b>LOW BIRTHWEIGHT</b>	3	3.5	12	4.7	3	4.3	9	4.7	0	0.0	3	5.8

Note: Unknown responses are excluded from the denominator when calculating percentages.

(1) Crude birth rate per 1,000 population.

(2) Teen birth rate per 1,000 female population ages 15-17, 18-19, or 15-19. Population estimates by census area for 15-17 and 18-19 are not available for 2003 or 2004. Therefore, rates for these age groups are not reported.

(3) Fertility rate per 1,000 female population ages 15-44. Population estimates by race by census area are only available for 2003 and 2004. Therefore, three year rates are not reported.

\* Rates based on fewer than 10 occurrences are statistically unreliable and should be used with caution.

\*\* Data suppressed for confidentiality concerns if total births to residents, by race, is less than five observations.

**TABLE 2**                      **SELECTED BIRTH STATISTICS REPORTED BY MOTHER'S RACE:**  
**2004 AND 2002-2004**  
**VALDEZ-CORDOVA CENSUS AREA**

	TOTAL				WHITE				NATIVE			
	2004 NUMBER	2004 RATE*	2002-2004 NUMBER	2002-2004 RATE*	2004 NUMBER	2004 RATE*	2002-2004 NUMBER	2002-2004 RATE*	2004 NUMBER	2004 RATE*	2002-2004 NUMBER	2002-2004 RATE*
<b>BIRTH RATES</b>												
CRUDE BIRTH RATE (1)	126	12.7	371	12.2	90	11.8	270		26	15.6	70	
TEEN BIRTH RATE (2)												
15-17	4		7		1		2		3		5	
18-19	8		22		5		15		2		5	
15-19	12	28.0	29	22.5	6	19.2 *	17		5	51.0 *	10	
FERTILITY RATE (3)	126	65.5	371	61.6	90	61.8	270		26	75.8	70	
	2004 NUMBER	2004 %	2002-2004 NUMBER	2002-2004 %	2004 NUMBER	2004 %	2002-2004 NUMBER	2002-2004 %	2004 NUMBER	2004 %	2002-2004 NUMBER	2002-2004 %
<b>BIRTHS</b>												
WITHIN AREA	36	100.0	113	100.0	30	83.3	95	84.1	1	2.8	7	6.2
TO RESIDENTS	126	100.0	371	100.0	90	71.4	270	72.8	26	20.6	70	18.9
<b>FACILITY</b>												
HOSPITAL	107	84.9	327	88.1	73	81.1	230	85.2	26	100.0	69	98.6
BIRTHING CENTER	10	7.9	21	5.7	9	10.0	20	7.4	0	0.0	0	0.0
HOME	8	6.3	15	4.0	7	7.8	14	5.2	0	0.0	0	0.0
OTHER	0	0.0	1	0.3	0	0.0	0	0.0	0	0.0	1	1.4
OUTSIDE ALASKA	1	0.8	7	1.9	1	1.1	6	2.2	0	0.0	0	0.0
<b>MOTHER CHARACTERISTICS</b>												
<b>AGE GROUP</b>												
<15	0	0.0	1	0.3	0	0.0	1	0.4	0	0.0	0	0.0
15-19	12	9.5	29	7.8	6	6.7	17	6.3	5	19.2	10	14.3
20-24	31	24.6	95	25.6	20	22.2	65	24.1	9	34.6	24	34.3
25-29	25	19.8	92	24.8	17	18.9	63	23.3	4	15.4	16	22.9
30-34	37	29.4	88	23.7	29	32.2	69	25.6	7	26.9	14	20.0
35-39	19	15.1	52	14.0	16	17.8	44	16.3	1	3.8	6	8.6
40-44	2	1.6	14	3.8	2	2.2	11	4.1	0	0.0	0	0.0
45+	0	0.0	0	0.0	0	0.0	0	0.0	0	0.0	0	0.0
REPORTED DRINKING	2	1.6	11	3.0	2	2.3	7	2.7	0	0.0	4	5.7
REPORTED SMOKING	13	10.6	46	12.6	7	8.0	28	10.6	6	23.1	17	24.3
UNWED	35	27.8	103	28.0	18	20.0	58	21.6	15	57.7	39	55.7
<b>EDUCATION</b>												
<12 YEARS	13	10.7	38	10.8	6	6.9	20	7.8	6	24.0	16	23.5
12 YEARS	43	35.5	128	36.4	27	31.0	81	31.4	13	52.0	38	55.9
12+ YEARS	65	53.7	186	52.8	54	62.1	157	60.9	6	24.0	14	20.6
<b>PRENATAL CARE</b>												
<b>TRIMESTER CARE BEGAN</b>												
1ST TRIMESTER	90	76.3	283	80.2	69	82.1	219	83.6	14	56.0	44	66.7
3RD TRIMESTER	4	3.4	16	4.5	3	3.6	12	4.6	1	4.0	4	6.1
NO PRENATAL CARE	1	0.9	2	0.6	1	1.3	1	0.4	0	0.0	1	1.5
<b>APNCU INDEX</b>												
ADEQUATE+	24	21.2	63	18.6	21	26.3	49	19.8	2	8.0	10	14.9
ADEQUATE	32	28.3	121	35.8	24	30.0	93	37.5	7	28.0	21	31.3
INTERMEDIATE	29	25.7	85	25.1	18	22.5	59	23.8	8	32.0	19	28.4
INADEQUATE	28	24.8	69	20.4	17	21.3	47	19.0	8	32.0	17	25.4
<b>C-SECTION BIRTHS</b>	24	19.0	73	19.7	16	17.8	52	19.3	7	26.9	13	18.6
<b>PRE-TERM BIRTHS</b>	12	9.6	29	7.9	7	7.9	19	7.1	4	15.4	9	12.9
<b>LOW BIRTHWEIGHT</b>	11	8.9	23	6.3	5	5.7	16	6.0	4	15.4	5	7.1

Note: Unknown responses are excluded from the denominator when calculating percentages.

(1) Crude birth rate per 1,000 population.

(2) Teen birth rate per 1,000 female population ages 15-17, 18-19, or 15-19. Population estimates by census area for 15-17 and 18-19 are not available for 2003 or 2004. Therefore, rates for these age groups are not reported.

(3) Fertility rate per 1,000 female population ages 15-44. Population estimates by race by census area are only available for 2003 and 2004. Therefore, three year rates are not reported.

\* Rates based on fewer than 10 occurrences are statistically unreliable and should be used with caution.

\*\* Data suppressed for confidentiality concerns if total births to residents, by race, is less than five observations.

**TABLE 2 SELECTED BIRTH STATISTICS REPORTED BY MOTHER'S RACE:  
2004 AND 2002-2004  
WADE HAMPTON CENSUS AREA**

	TOTAL				WHITE				NATIVE			
	2004 NUMBER	2004 RATE*	2002-2004 NUMBER	2002-2004 RATE*	2004 NUMBER	2004 RATE*	2002-2004 NUMBER	2002-2004 RATE*	2004 NUMBER	2004 RATE*	2002-2004 NUMBER	2002-2004 RATE*
<b>BIRTH RATES</b>												
CRUDE BIRTH RATE (1)	224	30.3	660	29.9	7	14.7*	13		217	31.6	644	
TEEN BIRTH RATE (2)												
15-17	9		45		0		0		9		45	
18-19	35		82		0		0		35		82	
15-19	44	105.3	127	104.7	0	0.0	0		44	110.0	127	
FERTILITY RATE (3)	224	154.9	660	154.0	7	76.9*	13		217	161.0	644	

	TOTAL				WHITE				NATIVE			
	2004 NUMBER	2004 %	2002-2004 NUMBER	2002-2004 %	2004 NUMBER	2004 %	2002-2004 NUMBER	2002-2004 %	2004 NUMBER	2004 %	2002-2004 NUMBER	2002-2004 %
<b>BIRTHS</b>												
WITHIN AREA	8	100.0	12	100.0	0	0.0	0	0.0	7	87.5	11	91.7
TO RESIDENTS	224	100.0	660	100.0	7	3.1	13	2.0	217	96.9	644	97.6
<b>FACILITY</b>												
HOSPITAL	218	97.3	652	98.8	4	57.1	8	61.5	214	98.6	641	99.5
BIRTHING CENTER	0	0.0	0	0.0	0	0.0	0	0.0	0	0.0	0	0.0
HOME	1	0.4	1	0.2	1	14.3	1	7.7	0	0.0	0	0.0
OTHER	3	1.3	3	0.5	0	0.0	0	0.0	3	1.4	3	0.5
OUTSIDE ALASKA	2	0.9	4	0.6	2	28.6	4	30.8	0	0.0	0	0.0
<b>MOTHER CHARACTERISTICS</b>												
AGE GROUP												
<15	0	0.0	0	0.0	0	0.0	0	0.0	0	0.0	0	0.0
15-19	44	19.7	127	19.3	0	0.0	0	0.0	44	20.3	127	19.7
20-24	72	32.3	186	28.3	0	0.0	1	9.1	72	33.2	184	28.6
25-29	41	18.4	150	22.8	4	66.7	8	72.7	37	17.1	140	21.7
30-34	35	15.7	109	16.6	1	16.7	1	9.1	34	15.7	108	16.8
35-39	27	12.1	71	10.8	1	16.7	1	9.1	26	12.0	70	10.9
40-44	3	1.3	14	2.1	0	0.0	0	0.0	3	1.4	14	2.2
45+	1	0.4	1	0.2	0	0.0	0	0.0	1	0.5	1	0.2
REPORTED DRINKING	10	4.5	38	5.8	0	0.0	0	0.0	10	4.7	38	5.9
REPORTED SMOKING	61	27.5	174	26.6	0	0.0	0	0.0	61	28.4	173	27.0
UNWED	150	67.0	425	64.5	0	0.0	0	0.0	150	69.1	423	65.7
EDUCATION												
<12 YEARS	71	32.1	202	31.2	0	0.0	0	0.0	71	33.2	201	31.8
12 YEARS	132	59.7	378	58.4	3	42.9	4	30.8	129	60.3	374	59.1
12+ YEARS	18	8.1	67	10.4	4	57.1	9	69.2	14	6.5	58	9.2
<b>PRENATAL CARE</b>												
TRIMESTER CARE BEGAN												
1ST TRIMESTER	122	59.2	365	58.3	7	100.0	12	92.3	115	57.8	352	57.7
3RD TRIMESTER	17	8.3	58	9.3	0	0.0	0	0.0	17	8.5	58	9.5
NO PRENATAL CARE	3	1.5	7	1.1	0	0.0	0	0.0	3	1.5	7	1.1
APNCU INDEX												
ADEQUATE+	4	1.9	27	4.3	1	14.3	1	7.7	3	1.5	26	4.3
ADEQUATE	19	9.2	68	10.9	3	42.9	8	61.5	16	8.0	60	9.9
INTERMEDIATE	58	28.2	196	31.4	3	42.9	3	23.1	55	27.6	191	31.4
INADEQUATE	125	60.7	334	53.4	0	0.0	1	7.7	125	62.8	332	54.5
<b>C-SECTION BIRTHS</b>	12	5.4	44	6.7	1	14.3	1	8.3	11	5.1	43	6.7
<b>PRE-TERM BIRTHS</b>	29	13.0	95	14.4	1	14.3	2	15.4	28	13.0	93	14.5
<b>LOW BIRTHWEIGHT</b>	16	7.2	53	8.1	0	0.0	0	0.0	16	7.4	53	8.3

Note: Unknown responses are excluded from the denominator when calculating percentages.

(1) Crude birth rate per 1,000 population.

(2) Teen birth rate per 1,000 female population ages 15-17, 18-19, or 15-19. Population estimates by census area for 15-17 and 18-19 are not available for 2003 or 2004. Therefore, rates for these age groups are not reported.

(3) Fertility rate per 1,000 female population ages 15-44. Population estimates by race by census area are only available for 2003 and 2004. Therefore, three year rates are not reported.

\* Rates based on fewer than 10 occurrences are statistically unreliable and should be used with caution.

\*\* Data suppressed for confidentiality concerns if total births to residents, by race, is less than five observations.

**TABLE 2 SELECTED BIRTH STATISTICS REPORTED BY MOTHER'S RACE:  
2004 AND 2002-2004  
WRANGELL-PETERSBURG CENSUS AREA**

	TOTAL				WHITE				NATIVE			
	2004 NUMBER	2004 RATE*	2002-2004 NUMBER	2002-2004 RATE*	2004 NUMBER	2004 RATE*	2002-2004 NUMBER	2002-2004 RATE*	2004 NUMBER	2004 RATE*	2002-2004 NUMBER	2002-2004 RATE*
<b>BIRTH RATES</b>												
CRUDE BIRTH RATE (1)	63	10.1	194	10.2	42	8.8	136		17	14.1		46
TEEN BIRTH RATE (2)												
15-17	2		5		1		2		1			3
18-19	5		12		3		7		2			5
15-19	7	28.0 *	17	21.9	4	23.0 *	9		3	51.7 *		8
FERTILITY RATE (3)	63	56.4	194	55.4	42	51.3	136		17	70.5		46

	TOTAL				WHITE				NATIVE			
	2004 NUMBER	2004 %	2002-2004 NUMBER	2002-2004 %	2004 NUMBER	2004 %	2002-2004 NUMBER	2002-2004 %	2004 NUMBER	2004 %	2002-2004 NUMBER	2002-2004 %
<b>BIRTHS</b>												
WITHIN AREA	20	100.0	77	100.0	14	70.0	57	74.0	5	25.0	16	20.8
TO RESIDENTS	63	100.0	194	100.0	42	66.7	136	70.1	17	27.0	46	23.7
<b>FACILITY</b>												
HOSPITAL	59	93.7	178	91.8	39	92.9	123	90.4	17	100.0	45	97.8
BIRTHING CENTER	0	0.0	0	0.0	0	0.0	0	0.0	0	0.0	0	0.0
HOME	0	0.0	0	0.0	0	0.0	0	0.0	0	0.0	0	0.0
OTHER	0	0.0	0	0.0	0	0.0	0	0.0	0	0.0	0	0.0
OUTSIDE ALASKA	4	6.3	16	8.2	3	7.1	13	9.6	0	0.0	1	2.2
<b>MOTHER CHARACTERISTICS</b>												
<b>AGE GROUP</b>												
<15	0	0.0	0	0.0	0	0.0	0	0.0	0	0.0	0	0.0
15-19	7	11.1	17	8.8	4	9.5	9	6.6	3	17.6	8	17.4
20-24	12	19.0	38	19.6	5	11.9	23	16.9	7	41.2	14	30.4
25-29	16	25.4	67	34.5	12	28.6	50	36.8	4	23.5	14	30.4
30-34	20	31.7	46	23.7	14	33.3	34	25.0	3	17.6	6	13.0
35-39	7	11.1	19	9.8	7	16.7	15	11.0	0	0.0	4	8.7
40-44	1	1.6	7	3.6	0	0.0	5	3.7	0	0.0	0	0.0
45+	0	0.0	0	0.0	0	0.0	0	0.0	0	0.0	0	0.0
REPORTED DRINKING	1	1.7	2	1.1	1	2.5	2	1.6	0	0.0	0	0.0
REPORTED SMOKING	4	6.7	21	11.1	2	5.0	15	11.3	2	11.8	6	13.3
UNWED	19	30.2	55	28.4	9	21.4	27	19.9	9	52.9	25	54.3
<b>EDUCATION</b>												
<12 YEARS	5	8.1	19	9.9	2	4.9	9	6.7	3	17.6	9	19.6
12 YEARS	26	41.9	83	43.5	15	36.6	57	42.5	10	58.8	22	47.8
12+ YEARS	31	50.0	89	46.6	24	58.5	68	50.7	4	23.5	15	32.6
<b>PRENATAL CARE</b>												
<b>TRIMESTER CARE BEGAN</b>												
1ST TRIMESTER	47	77.0	156	82.5	32	78.0	109	82.0	12	70.6	38	84.4
3RD TRIMESTER	6	9.8	11	5.8	4	9.8	8	6.0	2	11.8	3	6.7
NO PRENATAL CARE	0	0.0	0	0.0	0	0.0	0	0.0	0	0.0	0	0.0
<b>APNCU INDEX</b>												
ADEQUATE+	10	17.5	40	22.3	6	15.4	29	22.7	4	26.7	8	20.0
ADEQUATE	27	47.4	76	42.5	18	46.2	52	40.6	6	40.0	20	50.0
INTERMEDIATE	10	17.5	33	18.4	8	20.5	27	21.1	2	13.3	5	12.5
INADEQUATE	10	17.5	30	16.8	7	17.9	20	15.6	3	20.0	7	17.5
<b>C-SECTION BIRTHS</b>	15	23.8	42	21.9	13	31.0	28	20.7	2	11.8	11	24.4
<b>PRE-TERM BIRTHS</b>	4	6.3	18	9.3	1	2.4	12	8.8	2	11.8	4	8.7
<b>LOW BIRTHWEIGHT</b>	3	4.8	9	4.6	1	2.4	6	4.4	1	5.9	2	4.3

Note: Unknown responses are excluded from the denominator when calculating percentages.

(1) Crude birth rate per 1,000 population.

(2) Teen birth rate per 1,000 female population ages 15-17, 18-19, or 15-19. Population estimates by census area for 15-17 and 18-19 are not available for 2003 or 2004. Therefore, rates for these age groups are not reported.

(3) Fertility rate per 1,000 female population ages 15-44. Population estimates by race by census area are only available for 2003 and 2004. Therefore, three year rates are not reported.

\* Rates based on fewer than 10 occurrences are statistically unreliable and should be used with caution.

\*\* Data suppressed for confidentiality concerns if total births to residents, by race, is less than five observations.

**TABLE 2 SELECTED BIRTH STATISTICS REPORTED BY MOTHER'S RACE:  
2004 AND 2002-2004  
YAKUTAT BOROUGH**

	TOTAL				WHITE				NATIVE			
	2004 NUMBER	2004 RATE*	2002-2004 NUMBER	2002-2004 RATE*	2004 NUMBER	2004 RATE*	2002-2004 NUMBER	2002-2004 RATE*	2004 NUMBER	2004 RATE*	2002-2004 NUMBER	2002-2004 RATE*
<b>BIRTH RATES</b>												
CRUDE BIRTH RATE (1)	6	8.8 *	21	10.0	3	8.0 *	12		2	7.3 *	6	
TEEN BIRTH RATE (2)												
15-17	0		1		0		0		0		1	
18-19	0		0		0		0		0		0	
15-19	0	0.0	1	11.1 *	0	0.0	0		0	0.0	1	
FERTILITY RATE (3)	6	45.8 *	21	52.8	3	55.6 *	12		2	32.3 *	6	

	TOTAL				WHITE				NATIVE			
	2004 NUMBER	2004 %	2002-2004 NUMBER	2002-2004 %	2004 NUMBER	2004 %	2002-2004 NUMBER	2002-2004 %	2004 NUMBER	2004 %	2002-2004 NUMBER	2002-2004 %
<b>BIRTHS</b>												
WITHIN AREA	0	0.0	0	0.0	0	0.0	0	0.0	0	0.0	0	0.0
TO RESIDENTS	6	100.0	21	100.0	3	50.0	12	57.1	2	33.3	6	28.6
<b>FACILITY</b>												
HOSPITAL	5	83.3	16	76.2	2	66.7	8	66.7	2	100.0	6	100.0
BIRTHING CENTER	0	0.0	1	4.8	0	0.0	1	8.3	0	0.0	0	0.0
HOME	0	0.0	0	0.0	0	0.0	0	0.0	0	0.0	0	0.0
OTHER	0	0.0	0	0.0	0	0.0	0	0.0	0	0.0	0	0.0
OUTSIDE ALASKA	1	16.7	4	19.0	1	33.3	3	25.0	0	0.0	0	0.0
<b>MOTHER CHARACTERISTICS</b>												
<b>AGE GROUP</b>												
<15	0	0.0	0	0.0	**		0	0.0	**		0	0.0
15-19	0	0.0	1	4.8	**		0	0.0	**		1	16.7
20-24	3	50.0	8	38.1	**		4	33.3	**		4	66.7
25-29	1	16.7	5	23.8	**		4	33.3	**		0	0.0
30-34	2	33.3	6	28.6	**		4	33.3	**		0	0.0
35-39	0	0.0	0	0.0	**		0	0.0	**		0	0.0
40-44	0	0.0	1	4.8	**		0	0.0	**		1	16.7
45+	0	0.0	0	0.0	**		0	0.0	**		0	0.0
REPORTED DRINKING	0	0.0	0	0.0	**		0	0.0	**		0	0.0
REPORTED SMOKING	2	33.3	5	25.0	**		1	8.3	**		3	50.0
UNWED	2	33.3	5	25.0	**		0	0.0	**		4	66.7
<b>EDUCATION</b>												
<12 YEARS	1	16.7	2	10.5	**		0	0.0	**		1	16.7
12 YEARS	2	33.3	7	36.8	**		4	36.4	**		3	50.0
12+ YEARS	3	50.0	10	52.6	**		7	63.6	**		2	33.3
<b>PRENATAL CARE</b>												
<b>TRIMESTER CARE BEGAN</b>												
1ST TRIMESTER	2	33.3	10	52.6	**		6	54.5	**		3	50.0
3RD TRIMESTER	1	16.7	2	10.5	**		1	9.1	**		1	16.7
NO PRENATAL CARE	0	0.0	0	0.0	**		0	0.0	**		0	0.0
<b>APNCU INDEX</b>												
ADEQUATE+	0	0.0	2	11.1	**		1	9.1	**		1	16.7
ADEQUATE	1	16.7	4	22.2	**		3	27.3	**		1	16.7
INTERMEDIATE	1	16.7	2	11.1	**		1	9.1	**		1	16.7
INADEQUATE	4	66.7	10	55.6	**		6	54.5	**		3	50.0
<b>C-SECTION BIRTHS</b>	1	16.7	3	15.0	**		1	8.3	**		1	16.7
<b>PRE-TERM BIRTHS</b>	1	16.7	1	5.0	**		0	0.0	**		1	16.7
<b>LOW BIRTHWEIGHT</b>	0	0.0	0	0.0	**		0	0.0	**		0	0.0

Note: Unknown responses are excluded from the denominator when calculating percentages.

(1) Crude birth rate per 1,000 population.

(2) Teen birth rate per 1,000 female population ages 15-17, 18-19, or 15-19. Population estimates by census area for 15-17 and 18-19 are not available for 2003 or 2004. Therefore, rates for these age groups are not reported.

(3) Fertility rate per 1,000 female population ages 15-44. Population estimates by race by census area are only available for 2003 and 2004. Therefore, three year rates are not reported.

\* Rates based on fewer than 10 occurrences are statistically unreliable and should be used with caution.

\*\* Data suppressed for confidentiality concerns if total births to residents, by race, is less than five observations.



**TABLE 2 SELECTED BIRTH STATISTICS REPORTED BY MOTHER'S RACE:  
2004 AND 2002-2004  
YUKON-KOYUKUK CENSUS AREA**

	TOTAL				WHITE				NATIVE			
	2004 NUMBER	2004 RATE*	2002-2004 NUMBER	2002-2004 RATE*	2004 NUMBER	2004 RATE*	2002-2004 NUMBER	2002-2004 RATE*	2004 NUMBER	2004 RATE*	2002-2004 NUMBER	2002-2004 RATE*
<b>BIRTH RATES</b>												
CRUDE BIRTH RATE (1)	74	11.8	268	14.1	12	7.1	51		58	12.9	208	
TEEN BIRTH RATE (2)												
15-17	7		21		1		2		6		18	
18-19	11		32		2		3		9		28	
15-19	18	56.1	53	56.7	3	48.4*	5		15	60.5	46	
FERTILITY RATE (3)	74	62.4	268	74.1	12	40.1	51		58	67.0	208	

	TOTAL				WHITE				NATIVE			
	2004 NUMBER	2004 %	2002-2004 NUMBER	2002-2004 %	2004 NUMBER	2004 %	2002-2004 NUMBER	2002-2004 %	2004 NUMBER	2004 %	2002-2004 NUMBER	2002-2004 %
<b>BIRTHS</b>												
WITHIN AREA	0	0.0	1	100.0	0	0.0	0	0.0	0	0.0	1	100.0
TO RESIDENTS	74	100.0	268	100.0	12	16.2	51	19.0	58	78.4	208	77.6
<b>FACILITY</b>												
HOSPITAL	72	97.3	253	94.4	10	83.3	37	72.5	58	100.0	207	99.5
BIRTHING CENTER	2	2.7	13	4.9	2	16.7	12	23.5	0	0.0	1	0.5
HOME	0	0.0	0	0.0	0	0.0	0	0.0	0	0.0	0	0.0
OTHER	0	0.0	0	0.0	0	0.0	0	0.0	0	0.0	0	0.0
OUTSIDE ALASKA	0	0.0	2	0.7	0	0.0	2	3.9	0	0.0	0	0.0
<b>MOTHER CHARACTERISTICS</b>												
AGE GROUP												
<15	0	0.0	0	0.0	0	0.0	0	0.0	0	0.0	0	0.0
15-19	18	24.3	53	19.8	3	25.0	5	9.8	15	25.9	46	22.1
20-24	18	24.3	70	26.1	1	8.3	4	7.8	15	25.9	63	30.3
25-29	16	21.6	59	22.0	2	16.7	16	31.4	12	20.7	40	19.2
30-34	12	16.2	51	19.0	3	25.0	15	29.4	9	15.5	36	17.3
35-39	6	8.1	25	9.3	1	8.3	5	9.8	5	8.6	19	9.1
40-44	4	5.4	10	3.7	2	16.7	6	11.8	2	3.4	4	1.9
45+	0	0.0	0	0.0	0	0.0	0	0.0	0	0.0	0	0.0
REPORTED DRINKING	3	4.1	9	3.4	0	0.0	1	2.0	2	3.4	7	3.4
REPORTED SMOKING	24	32.4	94	35.1	2	16.7	9	17.6	20	34.5	81	38.9
UNWED	50	67.6	170	63.4	4	33.3	14	27.5	44	75.9	149	71.6
EDUCATION												
<12 YEARS	17	24.6	61	24.9	1	8.3	6	11.8	15	27.3	54	28.3
12 YEARS	36	52.2	116	47.3	5	41.7	10	19.6	30	54.5	104	54.5
12+ YEARS	16	23.2	68	27.8	6	50.0	35	68.6	10	18.2	33	17.3
<b>PRENATAL CARE</b>												
TRIMESTER CARE BEGAN												
1ST TRIMESTER	35	54.7	147	58.6	8	66.7	34	68.0	26	52.0	111	56.9
3RD TRIMESTER	9	14.1	27	10.8	2	16.7	4	8.0	7	14.0	23	11.8
NO PRENATAL CARE	1	1.5	2	0.8	0	0.0	0	0.0	1	2.0	2	1.0
APNCU INDEX												
ADEQUATE+	7	10.8	25	10.0	1	8.3	7	14.6	6	11.8	18	9.2
ADEQUATE	10	15.4	59	23.6	2	16.7	14	29.2	8	15.7	43	21.9
INTERMEDIATE	21	32.3	79	31.6	3	25.0	15	31.3	17	33.3	63	32.1
INADEQUATE	27	41.5	87	34.8	6	50.0	12	25.0	20	39.2	72	36.7
<b>C-SECTION BIRTHS</b>	18	24.3	52	19.4	2	16.7	12	23.5	16	27.6	38	18.3
<b>PRE-TERM BIRTHS</b>	6	8.1	25	9.3	0	0.0	1	2.0	6	10.3	23	11.1
<b>LOW BIRTHWEIGHT</b>	4	5.5	15	5.6	0	0.0	2	3.9	4	7.0	11	5.3

Note: Unknown responses are excluded from the denominator when calculating percentages.

- (1) Crude birth rate per 1,000 population.
- (2) Teen birth rate per 1,000 female population ages 15-17, 18-19, or 15-19. Population estimates by census area for 15-17 and 18-19 are not available for 2003 or 2004. Therefore, rates for these age groups are not reported.
- (3) Fertility rate per 1,000 female population ages 15-44. Population estimates by race by census area are only available for 2003 and 2004. Therefore, three year rates are not reported.

\* Rates based on fewer than 10 occurrences are statistically unreliable and should be used with caution.

\*\* Data suppressed for confidentiality concerns if total births to residents, by race, is less than five observations.

**TABLE 3 SELECTED BIRTH STATISTICS REPORTED BY MOTHER'S RACE AND NATIVE REGIONAL CORPORATION OF RESIDENCE: 2004 AND 2002-2004 AHTNA INCORPORATED**

	TOTAL				WHITE				NATIVE			
	2004 NUMBER	2004 %	2002-2004 NUMBER	2002-2004 %	2004 NUMBER	2004 %	2002-2004 NUMBER	2002-2004 %	2004 NUMBER	2004 %	2002-2004 NUMBER	2002-2004 %
<b>BIRTHS</b>												
WITHIN AREA	1	100.0	7	100.0	1	100.0	6	85.7	0	0.0	1	14.3
TO RESIDENTS	44	100.0	131	100.0	25	56.8	81	61.8	18	40.9	42	32.1
<b>FACILITY</b>												
HOSPITAL	37	84.1	106	80.9	18	72.0	58	71.6	18	100.0	41	97.6
BIRTHING CENTER	6	13.6	15	11.5	6	24.0	15	18.5	0	0.0	0	0.0
HOME	1	2.3	6	4.6	1	4.0	6	7.4	0	0.0	0	0.0
CLINIC	0	0.0	1	0.8	0	0.0	0	0.0	0	0.0	1	2.4
OUTSIDE ALASKA	0	0.0	3	2.3	0	0.0	2	2.5	0	0.0	0	0.0
<b>MOTHER CHARACTERISTICS</b>												
<b>AGE GROUP</b>												
<15	0	0.0	1	0.8	0	0.0	1	1.2	0	0.0	0	0.0
15-19	6	13.6	15	11.5	1	4.0	6	7.4	5	27.8	8	19.0
15-17	3	6.8	6	4.6	0	0.0	1	1.2	3	16.7	5	11.9
18-19	3	6.8	9	6.9	1	4.0	5	6.2	2	11.1	3	7.1
20-24	8	18.2	34	26.0	3	12.0	17	21.0	5	27.8	16	38.1
25-29	10	22.7	28	21.4	6	24.0	15	18.5	4	22.2	10	23.8
30-34	15	34.1	33	25.2	12	48.0	27	33.3	3	16.7	4	9.5
35-39	5	11.4	16	12.2	3	12.0	11	13.6	1	5.6	4	9.5
40-44	0	0.0	4	3.1	0	0.0	4	4.9	0	0.0	0	0.0
45+	0	0.0	0	0.0	0	0.0	0	0.0	0	0.0	0	0.0
REPORTED DRINKING	1	2.3	4	3.1	1	4.2	2	2.5	0	0.0	2	4.8
REPORTED SMOKING	6	13.6	15	11.6	3	12.0	8	9.9	3	16.7	7	16.7
UNWED	17	38.6	46	35.7	5	20.0	17	21.0	12	66.7	29	69.0
<b>EDUCATION</b>												
<12 YEARS	9	21.4	24	19.7	4	16.7	10	13.0	5	29.4	14	35.0
12 YEARS	18	42.9	47	38.5	7	29.2	24	31.2	10	58.8	20	50.0
12+ YEARS	15	35.7	51	41.8	13	54.2	43	55.8	2	11.8	6	15.0
<b>PRENATAL CARE</b>												
<b>TRIMESTER CARE BEGAN</b>												
1ST TRIMESTER	25	61.0	95	76.6	15	62.5	66	82.5	10	58.8	27	67.5
3RD TRIMESTER	2	4.9	4	3.2	1	4.2	2	2.5	1	5.9	2	5.0
NO PRENATAL CARE	1	2.6	2	1.7	1	4.5	1	1.3	0	0.0	1	2.4
<b>APNCU INDEX</b>												
ADEQUATE+	2	5.1	17	14.2	2	9.1	13	17.3	0	0.0	4	9.8
ADEQUATE	14	35.9	49	40.8	9	40.9	35	46.7	5	29.4	12	29.3
INTERMEDIATE	9	23.1	27	22.5	3	13.6	13	17.3	6	35.3	13	31.7
INADEQUATE	14	35.9	27	22.5	8	36.4	14	18.7	6	35.3	12	29.3
<b>C-SECTION BIRTHS</b>	8	18.2	22	16.8	4	16.0	15	18.5	4	22.2	5	11.9
<b>PRE-TERM BIRTHS</b>	6	13.6	11	8.4	2	8.0	4	4.9	4	22.2	7	16.7
<b>LOW BIRTHWEIGHT</b>	5	11.4	8	6.1	2	8.0	4	4.9	3	16.7	4	9.5

Note: Unknown responses are excluded from the denominator when calculating percentages.

**TABLE 3 SELECTED BIRTH STATISTICS REPORTED BY MOTHER'S RACE AND NATIVE REGIONAL CORPORATION OF RESIDENCE: 2004 AND 2002-2004 ALEUT CORPORATION**

	TOTAL				WHITE				NATIVE			
	2004 NUMBER	2004 %	2002-2004 NUMBER	2002-2004 %	2004 NUMBER	2004 %	2002-2004 NUMBER	2002-2004 %	2004 NUMBER	2004 %	2002-2004 NUMBER	2002-2004 %
<b>BIRTHS</b>												
WITHIN AREA	1	100.0	1	100.0	0	0.0	0	0.0	0	0.0	0	0.0
TO RESIDENTS	57	100.0	156	100.0	24	42.1	64	41.0	19	33.3	61	39.1
<b>FACILITY</b>												
HOSPITAL	42	73.7	114	73.1	12	50.0	32	50.0	19	100.0	61	100.0
BIRTHING CENTER	1	1.8	3	1.9	1	4.2	3	4.7	0	0.0	0	0.0
HOME	1	1.8	1	0.6	1	4.2	1	1.6	0	0.0	0	0.0
CLINIC	1	1.8	1	0.6	0	0.0	0	0.0	0	0.0	0	0.0
OUTSIDE ALASKA	12	21.1	37	23.7	10	41.7	28	43.8	0	0.0	0	0.0
<b>MOTHER CHARACTERISTICS</b>												
<b>AGE GROUP</b>												
<15	0	0.0	0	0.0	0	0.0	0	0.0	0	0.0	0	0.0
15-19	3	5.4	9	5.8	0	0.0	1	1.6	2	10.5	7	11.5
15-17	1	1.8	1	0.6	0	0.0	0	0.0	0	0.0	0	0.0
18-19	2	3.6	8	5.2	0	0.0	1	1.6	2	10.5	7	11.5
20-24	15	26.8	41	26.5	4	16.7	13	20.3	9	47.4	23	37.7
25-29	12	21.4	35	22.6	4	16.7	12	18.8	4	21.1	12	19.7
30-34	18	32.1	44	28.4	12	50.0	25	39.1	2	10.5	9	14.8
35-39	6	10.7	21	13.5	2	8.3	10	15.6	2	10.5	8	13.1
40-44	2	3.6	5	3.2	2	8.3	3	4.7	0	0.0	2	3.3
45+	0	0.0	0	0.0	0	0.0	0	0.0	0	0.0	0	0.0
REPORTED DRINKING	2	4.4	9	7.1	0	0.0	2	4.5	1	5.3	6	9.8
REPORTED SMOKING	8	15.1	27	18.2	2	8.7	4	6.5	6	31.6	22	36.1
UNWED	23	41.8	58	39.2	4	16.7	14	23.0	13	68.4	33	54.1
<b>EDUCATION</b>												
<12 YEARS	4	7.8	15	10.3	1	4.8	3	5.2	2	11.1	7	11.7
12 YEARS	27	52.9	83	57.2	8	38.1	27	46.6	12	66.7	44	73.3
12+ YEARS	20	39.2	47	32.4	12	57.1	28	48.3	4	22.2	9	15.0
<b>PRENATAL CARE</b>												
<b>TRIMESTER CARE BEGAN</b>												
1ST TRIMESTER	39	79.6	116	82.3	18	85.7	45	81.8	16	84.2	55	90.2
3RD TRIMESTER	3	6.1	5	3.5	1	4.8	3	5.5	1	5.3	1	1.6
NO PRENATAL CARE	1	2.2	1	0.7	0	0.0	0	0.0	0	0.0	0	0.0
<b>APNCU INDEX</b>												
ADEQUATE+	17	37.0	50	37.0	4	22.2	8	16.0	12	63.2	40	65.6
ADEQUATE	18	39.1	48	35.6	9	50.0	24	48.0	5	26.3	16	26.2
INTERMEDIATE	4	8.7	20	14.8	3	16.7	10	20.0	0	0.0	1	1.6
INADEQUATE	7	15.2	17	12.6	2	11.1	8	16.0	2	10.5	4	6.6
<b>C-SECTION BIRTHS</b>	10	17.5	29	18.6	5	20.8	17	26.6	2	10.5	6	9.8
<b>PRE-TERM BIRTHS</b>	5	8.8	11	7.1	1	4.2	2	3.1	1	5.3	5	8.2
<b>LOW BIRTHWEIGHT</b>	5	8.8	8	5.1	0	0.0	1	1.6	3	15.8	4	6.6

Note: Unknown responses are excluded from the denominator when calculating percentages.

**TABLE 3 SELECTED BIRTH STATISTICS REPORTED BY MOTHER'S RACE AND NATIVE REGIONAL CORPORATION OF RESIDENCE: 2004 AND 2002-2004**  
**ARCTIC SLOPE REGIONAL CORPORATION**

	TOTAL				WHITE				NATIVE			
	2004 NUMBER	2004 %	2002-2004 NUMBER	2002-2004 %	2004 NUMBER	2004 %	2002-2004 NUMBER	2002-2004 %	2004 NUMBER	2004 %	2002-2004 NUMBER	2002-2004 %
<b>BIRTHS</b>												
WITHIN AREA	63	100.0	122	100.0	1	1.6	2	1.6	60	95.2	115	94.3
TO RESIDENTS	169	100.0	499	100.0	18	10.7	38	7.6	144	85.2	436	87.4
<b>FACILITY</b>												
HOSPITAL	164	97.0	484	97.0	14	77.8	29	76.3	143	99.3	432	99.1
BIRTHING CENTER	1	0.6	2	0.4	1	5.6	1	2.6	0	0.0	1	0.2
HOME	0	0.0	1	0.2	0	0.0	0	0.0	0	0.0	1	0.2
CLINIC	0	0.0	0	0.0	0	0.0	0	0.0	0	0.0	0	0.0
OUTSIDE ALASKA	4	2.4	12	2.4	3	16.7	8	21.1	1	0.7	2	0.5
<b>MOTHER CHARACTERISTICS</b>												
<b>AGE GROUP</b>												
<15	1	0.6	1	0.2	0	0.0	0	0.0	1	0.7	1	0.2
15-19	30	17.7	97	19.6	1	5.6	4	11.5	29	20.2	92	21.1
15-17	9	5.3	32	6.5	1	5.6	1	2.9	8	5.6	31	7.1
18-19	21	12.4	65	13.1	0	0.0	3	8.6	21	14.6	61	14.0
20-24	51	30.2	153	30.8	2	11.1	8	22.9	48	33.3	141	32.3
25-29	49	29.0	123	24.8	7	38.9	10	28.6	40	27.8	106	24.3
30-34	24	14.2	72	14.5	3	16.7	7	20.0	18	12.5	57	13.1
35-39	13	7.7	44	8.9	5	27.8	6	17.1	7	4.9	33	7.6
40-44	1	0.6	5	1.0	0	0.0	0	0.0	1	0.7	5	1.1
45+	0	0.0	1	0.2	0	0.0	0	0.0	0	0.0	1	0.2
REPORTED DRINKING	8	4.8	25	5.1	0	0.0	1	2.9	8	5.6	24	5.5
REPORTED SMOKING	71	42.5	225	45.5	2	11.8	3	8.3	69	48.3	222	51.2
UNWED	114	67.5	315	63.3	4	22.2	8	21.1	109	75.7	303	69.5
<b>EDUCATION</b>												
<12 YEARS	37	22.6	125	25.9	1	6.7	1	2.9	36	25.4	124	29.2
12 YEARS	95	57.9	275	56.9	3	20.0	13	38.2	90	63.4	252	59.3
12+ YEARS	32	19.5	83	17.2	11	73.3	20	58.8	16	11.3	49	11.5
<b>PRENATAL CARE</b>												
<b>TRIMESTER CARE BEGAN</b>												
1ST TRIMESTER	109	68.1	318	66.9	17	94.4	32	86.5	86	63.7	268	64.4
3RD TRIMESTER	12	7.5	51	10.7	0	0.0	3	8.1	12	8.9	47	11.3
NO PRENATAL CARE	5	3.1	7	1.5	0	0.0	0	0.0	5	3.6	7	1.7
<b>APNCU INDEX</b>												
ADEQUATE+	16	9.9	44	9.3	2	11.8	4	11.1	10	7.3	34	8.1
ADEQUATE	34	21.1	121	25.5	7	41.2	14	38.9	26	19.0	99	23.7
INTERMEDIATE	52	32.3	139	29.3	6	35.3	12	33.3	45	32.8	125	29.9
INADEQUATE	59	36.6	171	36.0	2	11.8	6	16.7	56	40.9	160	38.3
<b>KESSNER INDEX</b>												
ADEQUATE	54	33.1	162	33.9	10	58.8	21	58.3	40	28.8	127	30.2
INTERMEDIATE	92	56.4	258	54.0	7	41.2	12	33.3	82	59.0	240	57.0
INADEQUATE	17	10.4	58	12.1	0	0.0	3	8.3	17	12.2	54	12.8
<b>C-SECTION BIRTHS</b>	14	8.3	45	9.0	4	22.2	7	18.4	8	5.6	31	7.1
<b>PRE-TERM BIRTHS</b>	27	16.0	72	14.4	2	11.1	3	7.9	23	16.0	66	15.1
<b>LOW BIRTHWEIGHT</b>	9	5.3	27	5.4	2	11.1	2	5.3	5	3.5	21	4.8

Note: Unknown responses are excluded from the denominator when calculating percentages.

**TABLE 3 SELECTED BIRTH STATISTICS REPORTED BY MOTHER'S RACE AND NATIVE REGIONAL CORPORATION OF RESIDENCE: 2004 AND 2002-2004  
BERING STRAITS NATIVE CORPORATION**

	TOTAL				WHITE				NATIVE			
	2004 NUMBER	2004 %	2002-2004 NUMBER	2002-2004 %	2004 NUMBER	2004 %	2002-2004 NUMBER	2002-2004 %	2004 NUMBER	2004 %	2002-2004 NUMBER	2002-2004 %
<b>BIRTHS</b>												
WITHIN AREA	113	100.0	319	100.0	3	2.7	13	4.1	109	96.5	301	94.4
TO RESIDENTS	230	100.0	637	100.0	16	7.0	61	9.6	211	91.7	567	89.0
<b>FACILITY</b>												
HOSPITAL	227	98.7	627	98.4	14	87.5	55	90.2	210	99.5	564	99.5
BIRTHING CENTER	0	0.0	0	0.0	0	0.0	0	0.0	0	0.0	0	0.0
HOME	0	0.0	1	0.2	0	0.0	0	0.0	0	0.0	0	0.0
CLINIC	1	0.4	3	0.5	0	0.0	0	0.0	1	0.5	3	0.5
OUTSIDE ALASKA	2	0.9	6	0.9	2	12.5	6	9.8	0	0.0	0	0.0
<b>MOTHER CHARACTERISTICS</b>												
<b>AGE GROUP</b>												
<15	1	0.4	5	0.8	0	0.0	0	0.0	1	0.5	5	0.9
15-19	48	20.9	119	18.7	3	18.8	4	6.6	45	21.3	115	20.3
15-17	17	7.4	44	6.9	2	12.5	2	3.3	15	7.1	42	7.4
18-19	31	13.5	75	11.8	1	6.3	2	3.3	30	14.2	73	12.9
20-24	76	33.0	173	27.2	1	6.3	13	21.3	75	35.5	159	28.0
25-29	53	23.0	168	26.4	5	31.3	10	16.4	46	21.8	154	27.2
30-34	34	14.8	107	16.8	2	12.5	18	29.5	31	14.7	87	15.3
35-39	13	5.7	51	8.0	5	31.3	16	26.2	8	3.8	33	5.8
40-44	5	2.2	14	2.2	0	0.0	0	0.0	5	2.4	14	2.5
45+	0	0.0	0	0.0	0	0.0	0	0.0	0	0.0	0	0.0
REPORTED DRINKING	21	9.2	61	9.7	0	0.0	0	0.0	21	10.0	61	10.8
REPORTED SMOKING	130	56.5	342	53.9	0	0.0	5	8.3	130	61.6	337	59.5
UNWED	163	70.9	422	66.2	3	18.8	11	18.0	160	75.8	411	72.5
<b>EDUCATION</b>												
<12 YEARS	65	28.8	182	29.1	1	7.1	5	8.9	64	30.5	176	31.2
12 YEARS	134	59.3	362	57.8	2	14.3	14	25.0	132	62.9	348	61.7
12+ YEARS	27	11.9	82	13.1	11	78.6	37	66.1	14	6.7	40	7.1
<b>PRENATAL CARE</b>												
<b>TRIMESTER CARE BEGAN</b>												
1ST TRIMESTER	164	71.9	463	74.2	13	81.3	52	86.7	149	71.3	404	72.7
3RD TRIMESTER	13	5.7	28	4.5	1	6.3	2	3.3	12	5.7	26	4.7
NO PRENATAL CARE	0	0.0	2	0.3	0	0.0	0	0.0	0	0.0	2	0.4
<b>APNCU INDEX</b>												
ADEQUATE+	34	14.9	134	21.5	1	6.3	13	22.0	33	15.8	120	21.5
ADEQUATE	77	33.8	195	31.3	4	25.0	24	40.7	72	34.4	167	30.0
INTERMEDIATE	68	29.8	169	27.1	9	56.3	17	28.8	58	27.8	151	27.1
INADEQUATE	49	21.5	126	20.2	2	12.5	5	8.5	46	22.0	119	21.4
<b>C-SECTION BIRTHS</b>	19	8.3	47	7.4	4	25.0	14	23.0	15	7.1	33	5.8
<b>PRE-TERM BIRTHS</b>	36	15.7	92	14.4	5	31.3	7	11.5	31	14.7	85	15.0
<b>LOW BIRTHWEIGHT</b>	21	9.1	46	7.2	6	37.5	8	13.1	15	7.1	38	6.7

Note: Unknown responses are excluded from the denominator when calculating percentages.

**TABLE 3 SELECTED BIRTH STATISTICS REPORTED BY MOTHER'S RACE AND NATIVE REGIONAL CORPORATION OF RESIDENCE: 2004 AND 2002-2004  
BRISTOL BAY NATIVE CORPORATION**

	TOTAL				WHITE				NATIVE			
	2004 NUMBER	2004 %	2002-2004 NUMBER	2002-2004 %	2004 NUMBER	2004 %	2002-2004 NUMBER	2002-2004 %	2004 NUMBER	2004 %	2002-2004 NUMBER	2002-2004 %
<b>BIRTHS</b>												
WITHIN AREA	54	100.0	157	100.0	10	18.5	17	10.8	44	81.5	138	87.9
TO RESIDENTS	139	100.0	381	100.0	26	18.7	75	19.7	111	79.9	299	78.5
<b>FACILITY</b>												
HOSPITAL	134	96.4	362	95.0	22	84.6	61	81.3	110	99.1	295	98.7
BIRTHING CENTER	2	1.4	3	0.8	1	3.8	2	2.7	1	0.9	1	0.3
HOME	0	0.0	4	1.0	0	0.0	3	4.0	0	0.0	1	0.3
CLINIC	0	0.0	3	0.8	0	0.0	0	0.0	0	0.0	2	0.7
OUTSIDE ALASKA	3	2.2	9	2.4	3	11.5	9	12.0	0	0.0	0	0.0
<b>MOTHER CHARACTERISTICS</b>												
<b>AGE GROUP</b>												
<15	0	0.0	1	0.3	0	0.0	0	0.0	0	0.0	1	0.3
15-19	20	14.4	53	13.9	1	3.8	2	2.6	19	17.1	51	17.0
15-17	7	5.0	19	5.0	0	0.0	1	1.3	7	6.3	18	6.0
18-19	13	9.4	34	8.9	1	3.8	1	1.3	12	10.8	33	11.0
20-24	38	27.3	111	29.1	2	7.7	16	21.3	35	31.5	93	31.1
25-29	34	24.5	100	26.2	10	38.5	26	34.7	24	21.6	73	24.4
30-34	22	15.8	59	15.5	9	34.6	19	25.3	13	11.7	38	12.7
35-39	17	12.2	45	11.8	2	7.7	9	12.0	14	12.6	34	11.4
40-44	8	5.8	12	3.1	2	7.7	3	4.0	6	5.4	9	3.0
45+	0	0.0	0	0.0	0	0.0	0	0.0	0	0.0	0	0.0
REPORTED DRINKING	4	2.9	15	4.0	1	4.2	4	5.6	3	2.7	11	3.7
REPORTED SMOKING	42	30.2	136	35.7	3	11.5	11	14.7	39	35.1	125	41.8
UNWED	64	46.0	190	49.9	2	7.7	15	20.0	62	55.9	174	58.2
<b>EDUCATION</b>												
<12 YEARS	28	20.4	67	17.9	0	0.0	2	2.8	28	25.5	65	22.0
12 YEARS	66	48.2	195	52.0	5	20.0	20	27.8	61	55.5	174	58.8
12+ YEARS	43	31.4	113	30.1	20	80.0	50	69.4	21	19.1	57	19.3
<b>PRENATAL CARE</b>												
<b>TRIMESTER CARE BEGAN</b>												
1ST TRIMESTER	102	73.4	289	76.5	18	69.2	60	81.1	82	73.9	222	74.7
3RD TRIMESTER	8	5.8	20	5.3	0	0.0	3	4.1	8	7.2	17	5.7
NO PRENATAL CARE	0	0.0	1	0.3	0	0.0	0	0.0	0	0.0	1	0.3
<b>APNCU INDEX</b>												
ADEQUATE+	28	20.1	79	21.0	7	26.9	17	23.6	21	18.9	61	20.5
ADEQUATE	36	25.9	91	24.1	8	30.8	23	31.9	28	25.2	66	22.1
INTERMEDIATE	41	29.5	113	30.0	8	30.8	21	29.2	31	27.9	88	29.5
INADEQUATE	34	24.5	94	24.9	3	11.5	11	15.3	31	27.9	83	27.9
<b>C-SECTION BIRTHS</b>	12	8.6	33	8.7	4	15.4	16	21.3	8	7.2	17	5.7
<b>PRE-TERM BIRTHS</b>	16	11.5	45	11.8	2	7.7	8	10.7	14	12.6	36	12.0
<b>LOW BIRTHWEIGHT</b>	5	3.6	14	3.7	1	3.8	2	2.7	4	3.6	12	4.0

Note: Unknown responses are excluded from the denominator when calculating percentages.

**TABLE 3 SELECTED BIRTH STATISTICS REPORTED BY MOTHER'S RACE AND NATIVE REGIONAL CORPORATION OF RESIDENCE: 2004 AND 2002-2004 CALISTA CORPORATION**

	TOTAL				WHITE				NATIVE			
	2004 NUMBER	2004 %	2002-2004 NUMBER	2002-2004 %	2004 NUMBER	2004 %	2002-2004 NUMBER	2002-2004 %	2004 NUMBER	2004 %	2002-2004 NUMBER	2002-2004 %
<b>BIRTHS</b>												
WITHIN AREA	407	100.0	1,124	100.0	4	1.0	20	1.8	400	98.3	1,094	97.3
TO RESIDENTS	647	100.0	1,901	100.0	24	3.7	87	4.6	617	95.4	1,797	94.5
<b>FACILITY</b>												
HOSPITAL	631	97.5	1,873	98.5	18	75.0	74	85.1	608	98.5	1,783	99.2
BIRTHING CENTER	0	0.0	2	0.1	0	0.0	2	2.3	0	0.0	0	0.0
HOME	2	0.3	5	0.3	1	4.2	2	2.3	1	0.2	3	0.2
CLINIC	9	1.4	11	0.6	0	0.0	0	0.0	8	1.3	10	0.6
OUTSIDE ALASKA	5	0.8	10	0.5	5	20.8	9	10.3	0	0.0	1	0.1
<b>MOTHER CHARACTERISTICS</b>												
<b>AGE GROUP</b>												
<15	0	0.0	1	0.1	0	0.0	0	0.0	0	0.0	1	0.1
15-19	113	17.5	300	15.8	1	4.3	2	2.4	111	18.0	296	16.5
15-17	28	4.3	100	5.3	0	0.0	1	1.2	27	4.4	97	5.4
18-19	85	13.2	200	10.5	1	4.3	1	1.2	84	13.6	199	11.1
20-24	201	31.1	577	30.4	1	4.3	12	14.1	199	32.3	560	31.2
25-29	130	20.1	450	23.7	8	34.8	24	28.2	121	19.6	422	23.5
30-34	108	16.7	310	16.3	9	39.1	25	29.4	97	15.7	281	15.6
35-39	76	11.8	203	10.7	3	13.0	14	16.5	72	11.7	187	10.4
40-44	15	2.3	53	2.8	1	4.3	8	9.4	14	2.3	45	2.5
45+	3	0.5	5	0.3	0	0.0	0	0.0	3	0.5	5	0.3
REPORTED DRINKING	31	4.8	96	5.1	0	0.0	1	1.2	31	5.1	95	5.3
REPORTED SMOKING	139	21.8	380	20.1	0	0.0	5	5.8	139	22.8	374	21.0
UNWED	359	55.5	1,024	53.9	2	8.3	11	12.8	356	57.7	1,006	56.0
<b>EDUCATION</b>												
<12 YEARS	181	28.8	479	25.9	0	0.0	2	2.4	181	30.2	476	27.1
12 YEARS	371	59.1	1,135	61.3	5	21.7	13	15.7	365	60.8	1,119	63.7
12+ YEARS	76	12.1	237	12.8	18	78.3	68	81.9	54	9.0	162	9.2
<b>PRENATAL CARE</b>												
<b>TRIMESTER CARE BEGAN</b>												
1ST TRIMESTER	353	59.1	1,059	58.6	19	82.6	67	78.8	331	58.2	982	57.6
3RD TRIMESTER	45	7.5	159	8.8	0	0.0	2	2.4	45	7.9	157	9.2
NO PRENATAL CARE	7	1.2	14	0.8	0	0.0	0	0.0	6	1.1	13	0.8
<b>APNCU INDEX</b>												
ADEQUATE+	46	7.7	162	9.0	4	17.4	15	18.3	42	7.4	146	8.6
ADEQUATE	89	15.0	287	16.0	9	39.1	35	42.7	80	14.1	251	14.8
INTERMEDIATE	163	27.4	509	28.4	6	26.1	16	19.5	156	27.6	487	28.7
INADEQUATE	296	49.8	833	46.5	4	17.4	16	19.5	288	50.9	811	47.8
<b>C-SECTION BIRTHS</b>	54	8.3	167	8.8	6	25.0	18	20.7	48	7.8	146	8.1
<b>PRE-TERM BIRTHS</b>	83	12.8	283	14.9	2	8.3	7	8.0	81	13.1	275	15.3
<b>LOW BIRTHWEIGHT</b>	48	7.4	136	7.2	0	0.0	1	1.1	48	7.8	134	7.5

Note: Unknown responses are excluded from the denominator when calculating percentages.

**TABLE 3 SELECTED BIRTH STATISTICS REPORTED BY MOTHER'S RACE AND NATIVE REGIONAL CORPORATION OF RESIDENCE: 2004 AND 2002-2004  
CHUGACH ALASKA CORPORATION**

	TOTAL				WHITE				NATIVE			
	2004 NUMBER	2004 %	2002-2004 NUMBER	2002-2004 %	2004 NUMBER	2004 %	2002-2004 NUMBER	2002-2004 %	2004 NUMBER	2004 %	2002-2004 NUMBER	2002-2004 %
<b>BIRTHS</b>												
WITHIN AREA	37	100.0	111	100.0	31	83.8	94	84.7	1	2.7	6	5.4
TO RESIDENTS	148	100.0	409	100.0	102	68.9	302	73.8	34	23.0	80	19.6
<b>FACILITY</b>												
HOSPITAL	133	89.9	384	93.9	89	87.3	279	92.4	34	100.0	80	100.0
BIRTHING CENTER	6	4.1	11	2.7	5	4.9	10	3.3	0	0.0	0	0.0
HOME	8	5.4	10	2.4	7	6.9	9	3.0	0	0.0	0	0.0
CLINIC	0	0.0	0	0.0	0	0.0	0	0.0	0	0.0	0	0.0
OUTSIDE ALASKA	1	0.7	4	1.0	1	1.0	4	1.3	0	0.0	0	0.0
<b>MOTHER CHARACTERISTICS</b>												
<b>AGE GROUP</b>												
<15	0	0.0	0	0.0	0	0.0	0	0.0	0	0.0	0	0.0
15-19	14	9.5	31	7.5	8	7.9	19	6.3	5	14.7	11	13.8
15-17	1	0.7	3	0.7	1	1.0	2	0.7	0	0.0	1	1.3
18-19	13	8.8	28	6.8	7	6.9	17	5.6	5	14.7	10	12.5
20-24	38	25.7	98	24.0	21	20.6	69	22.8	14	41.2	23	28.8
25-29	28	18.9	102	24.9	20	19.6	73	24.2	4	11.8	18	22.5
30-34	39	26.4	97	23.7	27	26.5	69	22.8	10	29.4	24	30.0
35-39	26	17.6	64	15.6	23	22.5	58	19.2	1	2.9	4	5.0
40-44	3	2.0	17	4.2	3	2.9	14	4.6	0	0.0	0	0.0
45+	0	0.0	0	0.0	0	0.0	0	0.0	0	0.0	0	0.0
REPORTED DRINKING	2	1.4	11	2.7	1	1.0	5	1.7	1	2.9	6	7.5
REPORTED SMOKING	19	13.1	62	15.3	4	4.0	28	9.4	15	44.1	33	41.3
UNWED	38	25.7	111	27.2	19	18.6	67	22.3	17	50.0	38	47.5
<b>EDUCATION</b>												
<12 YEARS	12	8.6	38	9.7	3	3.2	22	7.6	8	23.5	14	17.5
12 YEARS	49	35.3	146	37.2	28	29.5	91	31.6	18	52.9	48	60.0
12+ YEARS	78	56.1	208	53.1	64	67.4	175	60.8	8	23.5	18	22.5
<b>PRENATAL CARE</b>												
<b>TRIMESTER CARE BEGAN</b>												
1ST TRIMESTER	115	83.9	318	82.0	85	89.5	247	84.9	22	68.8	52	70.3
3RD TRIMESTER	2	1.5	15	3.9	2	2.1	12	4.1	0	0.0	3	4.1
NO PRENATAL CARE	1	0.8	1	0.3	0	0.0	0	0.0	1	3.0	1	1.4
<b>APNCU INDEX</b>												
ADEQUATE+	32	24.2	79	21.5	26	28.6	58	21.2	5	15.2	17	23.0
ADEQUATE	42	31.8	139	37.9	31	34.1	112	41.0	10	30.3	22	29.7
INTERMEDIATE	31	23.5	83	22.6	20	22.0	61	22.3	8	24.2	15	20.3
INADEQUATE	27	20.5	66	18.0	14	15.4	42	15.4	10	30.3	20	27.0
<b>C-SECTION BIRTHS</b>	31	20.9	90	22.0	25	24.5	69	22.8	5	14.7	15	18.8
<b>PRE-TERM BIRTHS</b>	10	6.8	32	7.8	7	6.9	26	8.6	2	5.9	5	6.3
<b>LOW BIRTHWEIGHT</b>	10	6.8	24	5.9	5	4.9	18	6.0	3	8.8	4	5.0

Note: Unknown responses are excluded from the denominator when calculating percentages.



**TABLE 3 SELECTED BIRTH STATISTICS REPORTED BY MOTHER'S RACE AND NATIVE REGIONAL CORPORATION OF RESIDENCE: 2004 AND 2002-2004  
COOK INLET REGION INCORPORATED**

	TOTAL				WHITE				NATIVE			
	2004 NUMBER	2004 %	2002-2004 NUMBER	2002-2004 %	2004 NUMBER	2004 %	2002-2004 NUMBER	2002-2004 %	2004 NUMBER	2004 %	2002-2004 NUMBER	2002-2004 %
<b>BIRTHS</b>												
WITHIN AREA	6,784	100.0	19,830	100.0	4,450	65.6	12,978	65.4	1,412	20.8	4,127	20.8
TO RESIDENTS	5,909	100.0	17,267	100.0	4,269	72.2	12,423	71.9	762	12.9	2,223	12.9
<b>FACILITY</b>												
HOSPITAL	5,580	94.4	16,357	94.7	3,962	92.8	11,583	93.2	752	98.7	2,199	98.9
BIRTHING CENTER	188	3.2	509	2.9	180	4.2	484	3.9	4	0.5	10	0.4
HOME	117	2.0	320	1.9	108	2.5	292	2.4	4	0.5	9	0.4
CLINIC	2	0.0	7	0.0	2	0.0	7	0.1	0	0.0	0	0.0
OUTSIDE ALASKA	22	0.4	74	0.4	17	0.4	57	0.5	2	0.3	5	0.2
<b>MOTHER CHARACTERISTICS</b>												
<b>AGE GROUP</b>												
<15	4	0.1	22	0.1	1	0.0	10	0.1	2	0.3	6	0.3
15-19	548	9.3	1,673	9.7	328	7.7	1,011	8.2	117	15.3	358	16.2
15-17	147	2.5	473	2.7	84	2.0	259	2.1	30	3.9	108	4.9
18-19	401	6.8	1,200	7.0	244	5.7	752	6.1	87	11.4	250	11.3
20-24	1,659	28.1	4,857	28.1	1,128	26.4	3,312	26.7	261	34.3	767	34.5
25-29	1,596	27.0	4,554	26.4	1,178	27.6	3,342	26.9	199	26.1	563	25.3
30-34	1,280	21.7	3,763	21.8	1,005	23.5	2,917	23.5	120	15.7	330	14.9
35-39	643	10.9	1,857	10.8	496	11.6	1,412	11.4	46	6.0	156	7.0
40-44	161	2.7	489	2.8	119	2.8	378	3.0	17	2.2	40	1.8
45+	18	0.3	41	0.2	14	0.3	34	0.3	0	0.0	2	0.1
REPORTED DRINKING	91	1.6	319	1.9	65	1.5	204	1.7	20	2.6	91	4.1
REPORTED SMOKING	765	13.1	2,466	14.5	489	11.6	1,526	12.4	206	27.2	707	31.9
UNWED	1,858	31.5	5,480	31.8	1,051	24.6	3,116	25.1	459	60.2	1,340	60.3
<b>EDUCATION</b>												
<12 YEARS	716	13.3	2,209	13.5	393	10.1	1,232	10.5	204	27.2	635	29.0
12 YEARS	2,148	39.8	6,510	39.9	1,429	36.7	4,407	37.4	344	45.8	1,011	46.1
12+ YEARS	2,537	47.0	7,597	46.6	2,069	53.2	6,144	52.1	203	27.0	547	24.9
<b>PRENATAL CARE</b>												
<b>TRIMESTER CARE BEGAN</b>												
1ST TRIMESTER	4,680	84.6	13,670	83.8	3,493	86.7	10,145	85.6	602	80.8	1,733	79.6
3RD TRIMESTER	197	3.6	616	3.8	131	3.3	432	3.6	19	2.6	71	3.3
NO PRENATAL CARE	23	0.5	75	0.5	10	0.3	41	0.4	5	0.7	15	0.7
<b>APNCU INDEX</b>												
ADEQUATE+	1,399	28.4	4,128	28.1	1,139	32.2	3,245	30.6	72	9.9	323	15.1
ADEQUATE	2,039	41.3	6,346	43.2	1,545	43.6	4,718	44.5	261	35.9	874	40.9
INTERMEDIATE	879	17.8	2,383	16.2	513	14.5	1,519	14.3	247	33.9	543	25.4
INADEQUATE	617	12.5	1,839	12.5	343	9.7	1,114	10.5	148	20.3	395	18.5
<b>C-SECTION BIRTHS</b>	1,322	22.4	3,824	22.1	1,012	23.7	2,904	23.4	108	14.2	278	12.5
<b>PRE-TERM BIRTHS</b>	606	10.3	1,751	10.1	433	10.1	1,223	9.8	66	8.7	206	9.3
<b>LOW BIRTHWEIGHT</b>	363	6.1	1,045	6.1	251	5.9	696	5.6	38	5.0	129	5.8

Note: Unknown responses are excluded from the denominator when calculating percentages.

**TABLE 3 SELECTED BIRTH STATISTICS REPORTED BY MOTHER'S RACE AND NATIVE REGIONAL CORPORATION OF RESIDENCE: 2004 AND 2002-2004 DOYON LIMITED**

	TOTAL				WHITE				NATIVE			
	2004 NUMBER	2004 %	2002-2004 NUMBER	2002-2004 %	2004 NUMBER	2004 %	2002-2004 NUMBER	2002-2004 %	2004 NUMBER	2004 %	2002-2004 NUMBER	2002-2004 %
<b>BIRTHS</b>												
WITHIN AREA	1,728	100.0	5,159	100.0	1,272	73.6	3,796	73.6	246	14.2	714	13.8
TO RESIDENTS	1,760	100.0	5,251	100.0	1,292	73.4	3,859	73.5	249	14.1	725	13.8
<b>FACILITY</b>												
HOSPITAL	1,680	95.5	4,996	95.1	1,225	94.8	3,631	94.1	243	97.6	716	98.8
BIRTHING CENTER	48	2.7	151	2.9	40	3.1	137	3.6	6	2.4	8	1.1
HOME	16	0.9	61	1.2	14	1.1	55	1.4	0	0.0	1	0.1
CLINIC	1	0.1	5	0.1	1	0.1	5	0.1	0	0.0	0	0.0
OUTSIDE ALASKA	15	0.9	38	0.7	12	0.9	31	0.8	0	0.0	0	0.0
<b>MOTHER CHARACTERISTICS</b>												
<b>AGE GROUP</b>												
<15	2	0.1	5	0.1	2	0.2	3	0.1	0	0.0	2	0.3
15-19	159	9.0	506	9.6	107	8.3	317	8.2	41	16.4	133	18.4
15-17	36	2.0	136	2.6	21	1.6	77	2.0	10	4.0	41	5.7
18-19	123	7.0	370	7.0	86	6.7	240	6.2	31	12.4	92	12.7
20-24	619	35.2	1,719	32.7	448	34.7	1,240	32.1	94	37.8	249	34.3
25-29	480	27.3	1,441	27.5	353	27.3	1,090	28.3	57	22.9	168	23.2
30-34	304	17.3	961	18.3	233	18.0	736	19.1	32	12.9	103	14.2
35-39	155	8.8	474	9.0	116	9.0	353	9.2	20	8.0	56	7.7
40-44	40	2.3	138	2.6	32	2.5	113	2.9	5	2.0	14	1.9
45+	1	0.1	5	0.1	1	0.1	5	0.1	0	0.0	0	0.0
REPORTED DRINKING	19	1.1	52	1.0	5	0.4	22	0.6	11	4.4	25	3.5
REPORTED SMOKING	230	13.1	751	14.3	151	11.7	495	12.9	65	26.2	214	29.6
UNWED	448	25.5	1,350	25.7	241	18.7	720	18.7	164	65.9	472	65.1
<b>EDUCATION</b>												
<12 YEARS	143	8.4	477	9.5	88	6.9	299	7.9	43	18.3	139	20.5
12 YEARS	707	41.4	2,059	41.1	512	40.2	1,478	39.3	114	48.5	346	51.0
12+ YEARS	857	50.2	2,471	49.4	674	52.9	1,985	52.8	78	33.2	193	28.5
<b>PRENATAL CARE</b>												
<b>TRIMESTER CARE BEGAN</b>												
1ST TRIMESTER	1,355	79.7	4,019	78.7	1,037	82.5	3,061	81.2	146	63.5	443	64.4
3RD TRIMESTER	94	5.5	271	5.3	67	5.3	186	4.9	19	8.3	53	7.7
NO PRENATAL CARE	2	0.1	13	0.3	1	0.1	9	0.2	1	0.4	2	0.3
<b>APNCU INDEX</b>												
ADEQUATE+	291	17.2	959	18.8	218	17.5	740	19.7	39	16.9	94	13.6
ADEQUATE	769	45.5	2,191	43.0	580	46.5	1,664	44.3	85	36.8	240	34.8
INTERMEDIATE	358	21.2	1,087	21.3	270	21.6	782	20.8	39	16.9	163	23.7
INADEQUATE	273	16.1	855	16.8	180	14.4	572	15.2	68	29.4	192	27.9
<b>C-SECTION BIRTHS</b>	390	22.2	1,088	20.7	293	22.7	815	21.1	50	20.1	129	17.8
<b>PRE-TERM BIRTHS</b>	155	8.8	485	9.2	105	8.1	315	8.2	25	10.0	80	11.0
<b>LOW BIRTHWEIGHT</b>	81	4.6	267	5.1	57	4.4	186	4.8	12	4.8	34	4.7

Note: Unknown responses are excluded from the denominator when calculating percentages.

**TABLE 3 SELECTED BIRTH STATISTICS REPORTED BY MOTHER'S RACE AND NATIVE REGIONAL CORPORATION OF RESIDENCE: 2004 AND 2002-2004 KONIAG INCORPORATED**

	TOTAL				WHITE				NATIVE			
	2004 NUMBER	2004 %	2002-2004 NUMBER	2002-2004 %	2004 NUMBER	2004 %	2002-2004 NUMBER	2002-2004 %	2004 NUMBER	2004 %	2002-2004 NUMBER	2002-2004 %
<b>BIRTHS</b>												
WITHIN AREA	184	100.0	569	100.0	109	59.2	352	61.9	26	14.1	73	12.8
TO RESIDENTS	212	100.0	628	100.0	120	56.6	376	59.9	36	17.0	92	14.6
<b>FACILITY</b>												
HOSPITAL	208	98.1	616	98.1	117	97.5	365	97.1	35	97.2	91	98.9
BIRTHING CENTER	0	0.0	0	0.0	0	0.0	0	0.0	0	0.0	0	0.0
HOME	3	1.4	10	1.6	2	1.7	9	2.4	1	2.8	1	1.1
CLINIC	0	0.0	0	0.0	0	0.0	0	0.0	0	0.0	0	0.0
OUTSIDE ALASKA	1	0.5	2	0.3	1	0.8	2	0.5	0	0.0	0	0.0
<b>MOTHER CHARACTERISTICS</b>												
<b>AGE GROUP</b>												
<15	0	0.0	0	0.0	0	0.0	0	0.0	0	0.0	0	0.0
15-19	23	10.9	54	8.6	13	10.9	34	9.1	7	19.5	13	14.1
15-17	4	1.9	13	2.1	2	1.7	6	1.6	1	2.8	5	5.4
18-19	19	9.0	41	6.5	11	9.2	28	7.5	6	16.7	8	8.7
20-24	50	23.6	160	25.5	26	21.7	94	25.1	6	16.7	22	23.9
25-29	56	26.4	181	28.9	36	30.0	112	29.9	10	27.8	25	27.2
30-34	48	22.6	137	21.9	28	23.3	78	20.8	8	22.2	23	25.0
35-39	27	12.7	67	10.7	13	10.8	40	10.7	5	13.9	8	8.7
40-44	8	3.8	26	4.1	4	3.3	15	4.0	0	0.0	1	1.1
45+	0	0.0	2	0.3	0	0.0	2	0.5	0	0.0	0	0.0
REPORTED DRINKING	0	0.0	5	0.8	0	0.0	4	1.1	0	0.0	1	1.1
REPORTED SMOKING	24	11.4	65	10.5	11	9.2	36	9.6	11	30.6	22	24.2
UNWED	59	27.8	170	27.1	21	17.5	65	17.3	19	52.8	46	50.0
<b>EDUCATION</b>												
<12 YEARS	28	13.5	69	11.3	14	11.8	37	10.0	7	20.6	14	15.6
12 YEARS	69	33.3	226	37.0	32	26.9	116	31.3	14	41.2	43	47.8
12+ YEARS	110	53.1	316	51.7	73	61.3	218	58.8	13	38.2	33	36.7
<b>PRENATAL CARE</b>												
<b>TRIMESTER CARE BEGAN</b>												
1ST TRIMESTER	174	83.7	519	84.1	104	86.7	327	87.4	33	91.7	82	90.1
3RD TRIMESTER	6	2.9	11	1.8	4	3.3	6	1.6	1	2.8	1	1.1
NO PRENATAL CARE	0	0.0	2	0.3	0	0.0	1	0.3	0	0.0	0	0.0
<b>APNCU INDEX</b>												
ADEQUATE+	33	16.8	108	18.2	20	17.4	69	19.0	7	20.0	20	23.3
ADEQUATE	85	43.1	245	41.3	57	49.6	169	46.6	12	34.3	28	32.6
INTERMEDIATE	54	27.4	166	28.0	27	23.5	95	26.2	12	34.3	29	33.7
INADEQUATE	25	12.7	74	12.5	11	9.6	30	8.3	4	11.4	9	10.5
<b>C-SECTION BIRTHS</b>	49	23.1	131	20.9	30	25.0	73	19.4	12	33.3	26	28.3
<b>PRE-TERM BIRTHS</b>	26	12.3	67	10.7	12	10.0	31	8.2	7	19.4	12	13.0
<b>LOW BIRTHWEIGHT</b>	20	9.4	48	7.6	6	5.0	20	5.3	6	16.7	8	8.7

Note: Unknown responses are excluded from the denominator when calculating percentages.

**TABLE 3 SELECTED BIRTH STATISTICS REPORTED BY MOTHER'S RACE AND NATIVE REGIONAL CORPORATION OF RESIDENCE: 2004 AND 2002-2004**  
**NANA REGIONAL CORPORATION**

	TOTAL				WHITE				NATIVE			
	2004 NUMBER	2004 %	2002-2004 NUMBER	2002-2004 %	2004 NUMBER	2004 %	2002-2004 NUMBER	2002-2004 %	2004 NUMBER	2004 %	2002-2004 NUMBER	2002-2004 %
<b>BIRTHS</b>												
WITHIN AREA	81	100.0	242	100.0	2	2.5	9	3.7	78	96.3	232	95.9
TO RESIDENTS	177	100.0	493	100.0	11	6.2	33	6.7	163	92.1	456	92.5
<b>FACILITY</b>												
HOSPITAL	175	98.9	487	98.8	9	81.8	28	84.8	163	100.0	455	99.8
BIRTHING CENTER	0	0.0	1	0.2	0	0.0	1	3.0	0	0.0	0	0.0
HOME	0	0.0	1	0.2	0	0.0	0	0.0	0	0.0	1	0.2
CLINIC	0	0.0	0	0.0	0	0.0	0	0.0	0	0.0	0	0.0
OUTSIDE ALASKA	2	1.1	4	0.8	2	18.2	4	12.1	0	0.0	0	0.0
<b>MOTHER CHARACTERISTICS</b>												
<b>AGE GROUP</b>												
<15	1	0.6	3	0.6	0	0.0	0	0.0	1	0.6	3	0.7
15-19	37	20.9	95	19.3	0	0.0	2	6.1	37	22.7	93	20.4
15-17	16	9.0	36	7.3	0	0.0	2	6.1	16	9.8	34	7.5
18-19	21	11.9	59	12.0	0	0.0	0	0.0	21	12.9	59	12.9
20-24	42	23.7	148	30.0	2	18.2	5	15.2	40	24.5	142	31.1
25-29	44	24.9	117	23.7	4	36.4	11	33.3	39	23.9	105	23.0
30-34	36	20.3	78	15.8	3	27.3	8	24.2	31	19.0	68	14.9
35-39	14	7.9	41	8.3	1	9.1	5	15.2	13	8.0	36	7.9
40-44	3	1.7	10	2.0	1	9.1	2	6.1	2	1.2	8	1.8
45+	0	0.0	1	0.2	0	0.0	0	0.0	0	0.0	1	0.2
REPORTED DRINKING	4	2.3	18	3.7	0	0.0	2	6.1	4	2.5	16	3.6
REPORTED SMOKING	69	39.0	223	45.7	1	9.1	4	12.1	68	41.7	219	48.5
UNWED	122	68.9	342	69.5	2	18.2	9	27.3	119	73.0	332	72.8
<b>EDUCATION</b>												
<12 YEARS	66	38.2	187	39.2	0	0.0	2	6.7	66	41.0	185	41.6
12 YEARS	84	48.6	233	48.8	0	0.0	4	13.3	84	52.2	229	51.5
12+ YEARS	23	13.3	57	11.9	10	100.0	24	80.0	11	6.8	31	7.0
<b>PRENATAL CARE</b>												
<b>TRIMESTER CARE BEGAN</b>												
1ST TRIMESTER	124	72.1	336	70.4	9	81.8	27	81.8	113	71.1	307	69.5
3RD TRIMESTER	4	2.3	24	5.0	0	0.0	3	9.1	4	2.5	21	4.8
NO PRENATAL CARE	3	1.7	4	0.8	0	0.0	0	0.0	3	1.9	4	0.9
<b>APNCU INDEX</b>												
ADEQUATE+	26	15.0	85	17.8	2	20.0	8	25.0	24	14.9	77	17.3
ADEQUATE	45	26.0	121	25.3	4	40.0	10	31.3	39	24.2	109	24.5
INTERMEDIATE	53	30.6	131	27.4	3	30.0	7	21.9	50	31.1	124	27.9
INADEQUATE	49	28.3	141	29.5	1	10.0	7	21.9	48	29.8	134	30.2
<b>C-SECTION BIRTHS</b>	16	9.0	41	8.3	1	9.1	4	12.1	14	8.6	36	7.9
<b>PRE-TERM BIRTHS</b>	17	9.6	50	10.1	1	9.1	1	3.0	16	9.8	49	10.7
<b>LOW BIRTHWEIGHT</b>	11	6.2	30	6.1	2	18.2	2	6.1	9	5.5	28	6.1

Note: Unknown responses are excluded from the denominator when calculating percentages.

**TABLE 3 SELECTED BIRTH STATISTICS REPORTED BY MOTHER'S RACE AND NATIVE REGIONAL CORPORATION OF RESIDENCE: 2004 AND 2002-2004 SEALASKA CORPORATION**

	TOTAL				WHITE				NATIVE			
	2004 NUMBER	2004 %	2002-2004 NUMBER	2002-2004 %	2004 NUMBER	2004 %	2002-2004 NUMBER	2002-2004 %	2004 NUMBER	2004 %	2002-2004 NUMBER	2002-2004 %
<b>BIRTHS</b>												
WITHIN AREA	788	100.0	2,409	100.0	524	66.5	1,605	66.6	196	24.9	618	25.7
TO RESIDENTS	843	100.0	2,596	100.0	552	65.5	1,721	66.3	213	25.3	657	25.3
<b>FACILITY</b>												
HOSPITAL	725	86.0	2,218	85.4	459	83.2	1,424	82.7	205	96.2	617	93.9
BIRTHING CENTER	55	6.5	161	6.2	45	8.2	135	7.8	6	2.8	17	2.6
HOME	35	4.2	111	4.3	30	5.4	90	5.2	1	0.5	13	2.0
CLINIC	2	0.2	6	0.2	2	0.4	3	0.2	0	0.0	3	0.5
OUTSIDE ALASKA	26	3.1	100	3.9	16	2.9	69	4.0	1	0.5	7	1.1
<b>MOTHER CHARACTERISTICS</b>												
<b>AGE GROUP</b>												
<15	0	0.0	1	0.0	0	0.0	0	0.0	0	0.0	1	0.2
15-19	75	8.9	241	9.3	40	7.2	122	7.1	32	15.0	104	15.9
15-17	17	2.0	60	2.3	3	0.5	22	1.3	13	6.1	34	5.2
18-19	58	6.9	181	7.0	37	6.7	100	5.8	19	8.9	70	10.7
20-24	230	27.3	689	26.6	128	23.2	397	23.1	88	41.3	247	37.6
25-29	237	28.1	693	26.7	161	29.2	470	27.3	52	24.4	160	24.4
30-34	185	21.9	583	22.5	136	24.6	443	25.8	30	14.1	87	13.2
35-39	101	12.0	306	11.8	78	14.1	230	13.4	9	4.2	46	7.0
40-44	13	1.5	77	3.0	7	1.3	54	3.1	2	0.9	12	1.8
45+	2	0.2	3	0.1	2	0.4	3	0.2	0	0.0	0	0.0
REPORTED DRINKING	17	2.1	39	1.6	8	1.5	22	1.3	8	3.8	15	2.3
REPORTED SMOKING	122	14.7	404	15.8	75	13.7	245	14.3	39	18.4	142	21.8
UNWED	310	37.0	925	36.0	146	26.4	454	26.5	143	67.1	419	63.8
<b>EDUCATION</b>												
<12 YEARS	81	9.9	285	11.5	30	5.6	124	7.4	43	20.5	144	22.7
12 YEARS	328	40.2	928	37.4	189	35.1	543	32.6	113	53.8	315	49.8
12+ YEARS	407	49.9	1,268	51.1	320	59.4	998	59.9	54	25.7	174	27.5
<b>PRENATAL CARE</b>												
<b>TRIMESTER CARE BEGAN</b>												
1ST TRIMESTER	684	84.4	2,055	84.7	466	87.4	1,427	87.2	162	78.3	480	79.3
3RD TRIMESTER	29	3.6	80	3.3	13	2.4	40	2.4	13	6.3	33	5.5
NO PRENATAL CARE	4	0.5	11	0.5	3	0.6	8	0.5	1	0.5	3	0.6
<b>APNCU INDEX</b>												
ADEQUATE+	265	34.6	829	37.9	183	36.0	585	39.6	59	30.6	180	33.3
ADEQUATE	328	42.8	878	40.1	225	44.2	605	40.9	76	39.4	205	37.9
INTERMEDIATE	83	10.8	230	10.5	57	11.2	156	10.6	23	11.9	60	11.1
INADEQUATE	90	11.7	250	11.4	44	8.6	132	8.9	35	18.1	96	17.7
<b>C-SECTION BIRTHS</b>	239	28.4	734	28.3	168	30.4	520	30.2	55	25.8	159	24.2
<b>PRE-TERM BIRTHS</b>	95	11.3	260	10.0	56	10.1	152	8.8	28	13.1	77	11.7
<b>LOW BIRTHWEIGHT</b>	39	4.6	134	5.2	23	4.2	88	5.1	11	5.2	32	4.9

Note: Unknown responses are excluded from the denominator when calculating percentages.