

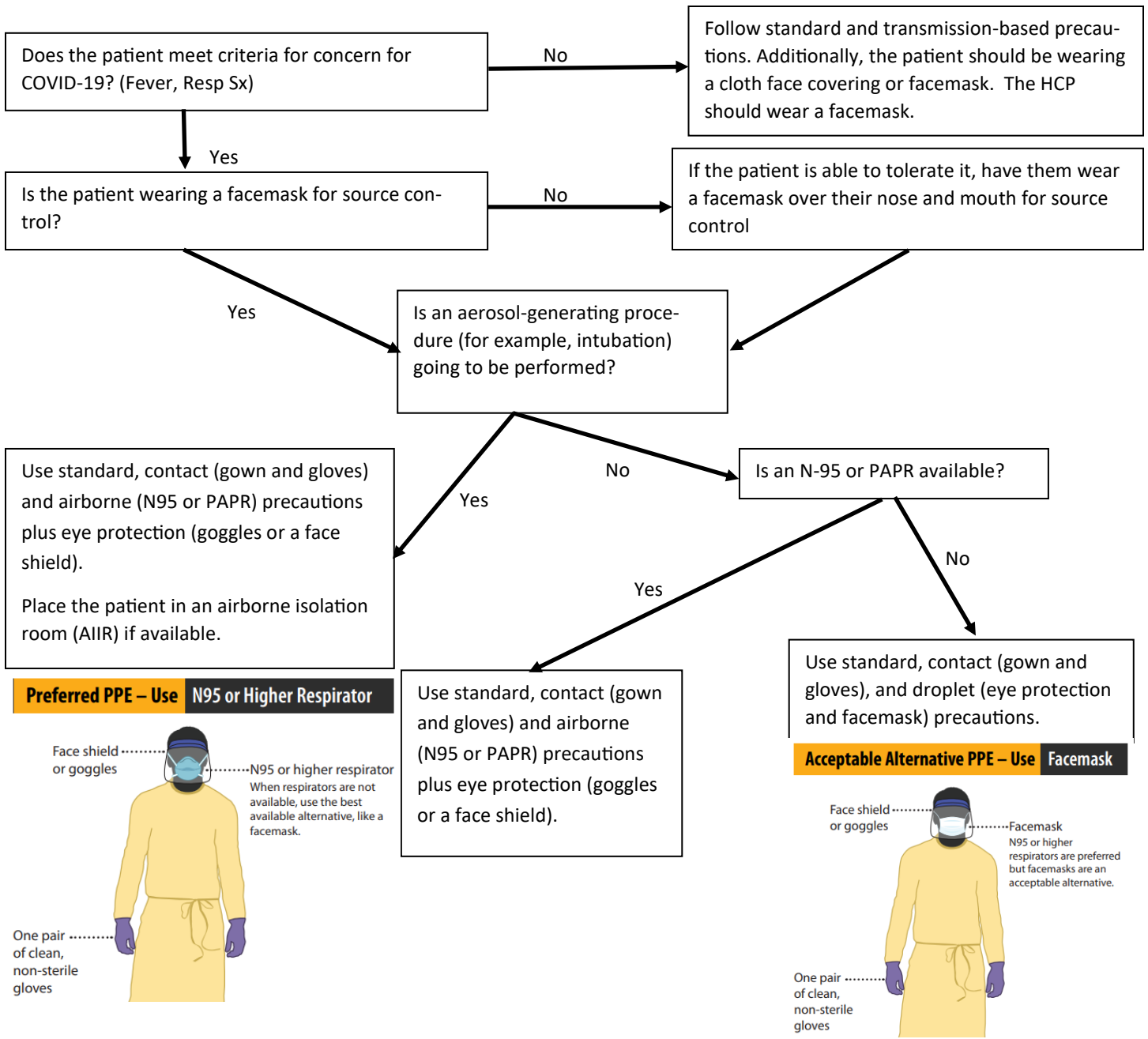
# Draft PPE Flowchart



**NOTE: This diagram is a visual aide. It does not replace the guidance of your Infection Control Team, or the guidance contained in <https://www.cdc.gov/coronavirus/2019-ncov/infection-control/index.html>**

**All persons entering the healthcare facility should be wearing a face covering for universal source control. Patients should wear a cloth face covering or facemask if tolerated. HCP should wear a facemask at all times.**

For the purposes of this document, a “cloth face covering” is a homemade item made of fabric worn over the nose and mouth. A “facemask” is an item of PPE intended for use in the healthcare setting that covers the nose and mouth, such as a medical mask or surgical mask.



For recommendations on extending PPE supply, and alternatives to conventional PPE, see <https://www.cdc.gov/coronavirus/2019-ncov/hcp/ppe-strategy/index.html>