

State of Alaska Department of Health

Rural Health Transformation Program Update

Betsy Wood, Director, Office of Health Savings

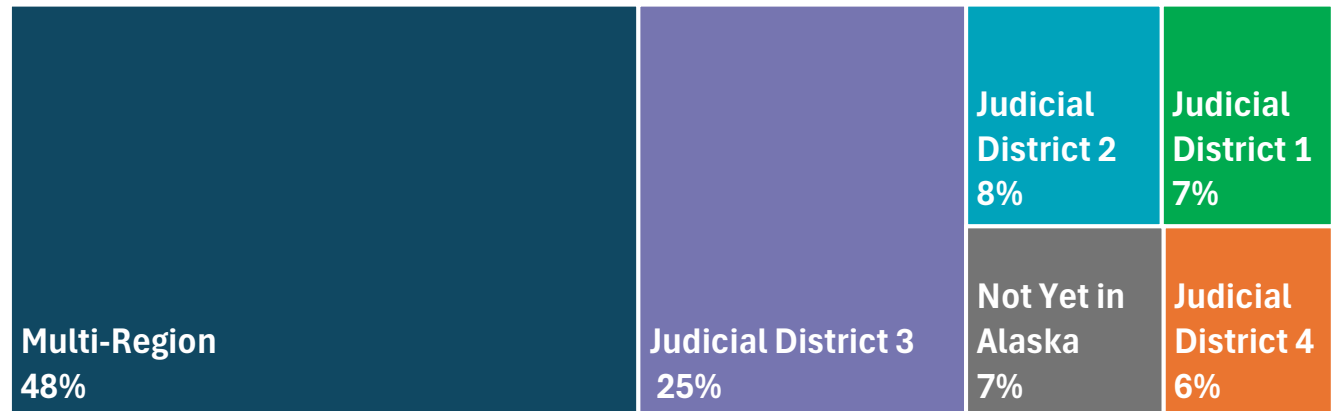
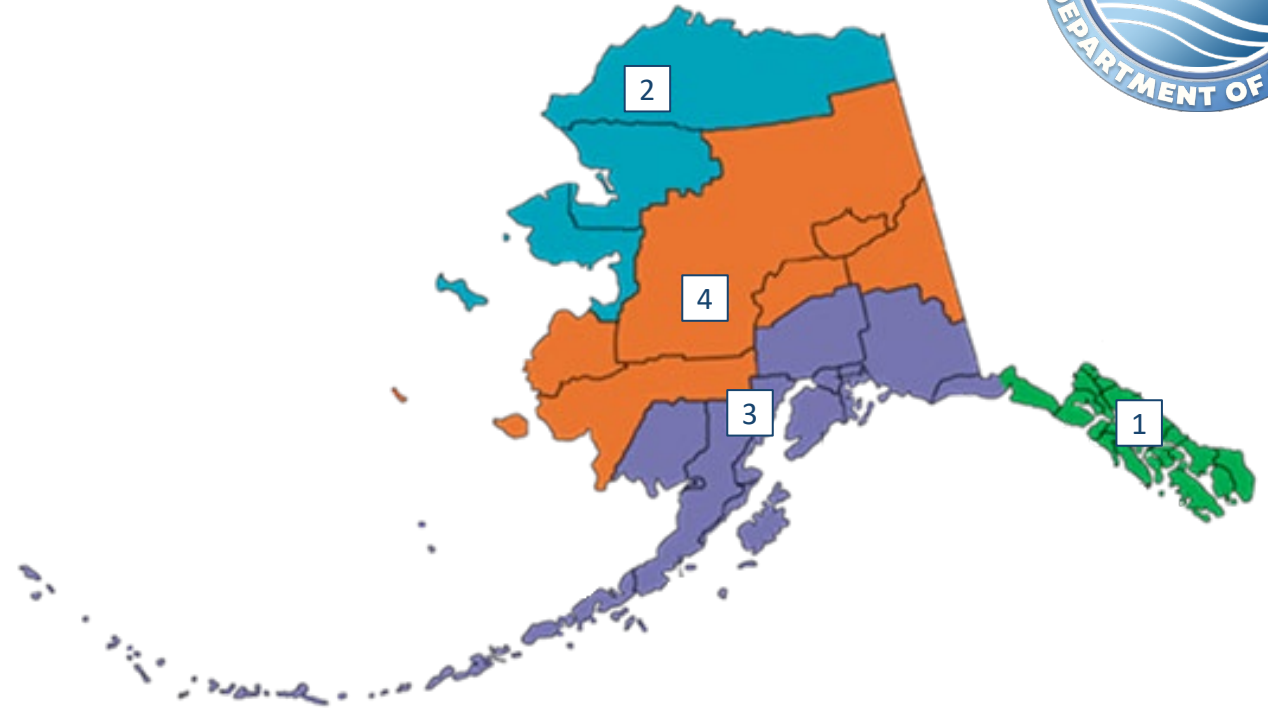


Wednesday, April 22, 2026

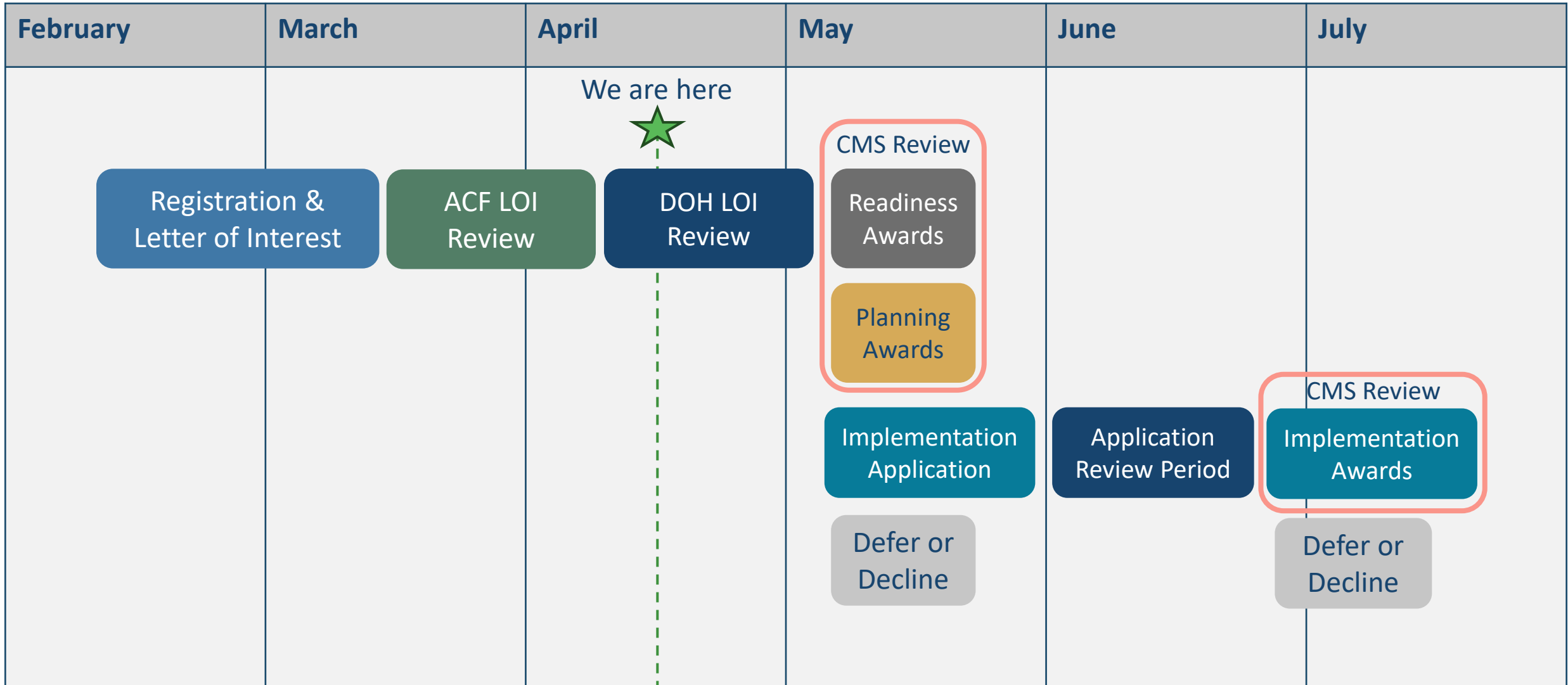
Letters of Interest: Scale of Response



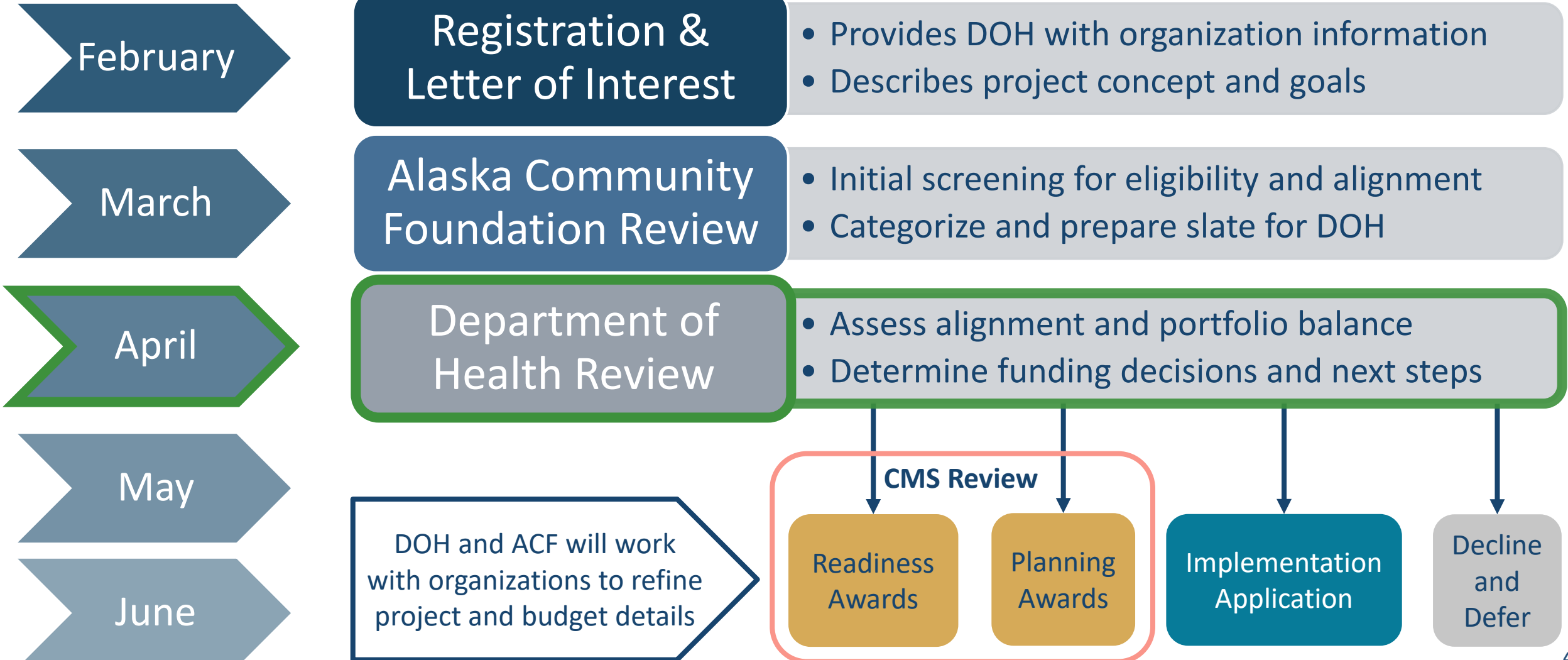
- The Alaska Community Foundation (ACF) received **1,795 Letters of Interest (LOIs)** from **864 unique organizations**
- Approximately **81% of applicants are Alaska-based**
- Using rough midpoint estimates, the total funding requests submitted through ACF represent approximately **\$2.5 billion in year-one Rural Health Transformation Program (RHTP) asks**, exceeding available funding



RHTP Year 1 Award Process: Overview



LOI Process Spotlight



LOI Process: Alaska Community Foundation Review



Proposal Review Team (PRT)

Multi-reviewer panel drawing on Alaska's philanthropic community

- Alaska Community Foundation
- Alaska Mental Health Trust Authority
- Bethel Community Services Foundation
- Bristol Bay Foundation
- Juneau Community Foundation
- Mat-Su Health Foundation
- Rasmuson Foundation

What the PRT Assessed:

- **Eligibility:** confirmed each LOI met program requirements
- **Alignment:** connection to community served, fit with Alaska's rural health context, and consistency with RHTP priorities
- **Feasibility:** organizational preparedness and strength of partnerships
- **Portfolio fit:** portfolio-level review of service gaps across factors including regions, populations, RHTP initiatives, and provider/service types

LOIs were organized into three pathways (**Readiness, Planning, and Implementation**) to match projects to the appropriate stage of investment at this time. ACF's analysis informs DOH's review and **DOH makes all final award decisions.**

LOI Process: Department of Health Review



DOH Review Panel

Reviews LOI recommendations through a policy and portfolio lens

Deputy Commissioner

Office of Health Savings

RHTP Program Team

DOH Division Leadership

Subject Matter Experts

- Reviews LOIs and recommendations
- Assesses alignment, impact, and readiness
- Applies a portfolio lens across regions and initiatives
- Leverages subject matter expertise as necessary
- Provides final recommendations to the Commissioner
- Commissioner reviews and makes final award decisions

Stay Informed

Stay connected to RHTP news and events – sign up today

health.alaska.gov/RHTP



Don't see your community listed and want to get involved with regional planning in your area? Send us an email

RHTP@alaska.gov

This project is supported by the Centers for Medicare & Medicaid Services (CMS) of the U.S. Department of Health and Human Services (HHS) as part of a financial assistance award totaling \$272,174,855.72, with 100 percent funded by CMS/HHS. The contents are those of the author(s) and do not necessarily represent the official views of, nor an endorsement, by CMS/HHS, or the U.S. Government.