

# **DEVELOPMENTAL SCREENING FOR ALL**

**HOW AGES AND STAGES ONLINE  
SCREENING CAN INCREASE ACCESS:  
ALASKA'S EXPERIENCE**

**Prepared for the National Smart Start Conference  
Greensboro, NC  
May 7, 2014**

# PRESENTERS

Erin Kinavey, M.Ed.

University of Alaska, Anchorage

[ekwennerstrom@uaa.alaska.edu](mailto:ekwennerstrom@uaa.alaska.edu)

Carol Prentice, MPA

Prentice Consulting, Juneau

[carol@cprenticeconsulting.com](mailto:carol@cprenticeconsulting.com)

Jillian Lush, MSW

Sprout Family Services, Homer

[jlush@sproutalaska.org](mailto:jlush@sproutalaska.org)

Post Conference Note: Additional information is available by  
contacting the Alaska Part C Office:

Laurie Thomas: [laurie.thomas2@alaska.gov](mailto:laurie.thomas2@alaska.gov) or

Monica Luther: [monica.luther@alaska.gov](mailto:monica.luther@alaska.gov)

# **DEVELOPMENTAL SCREENING FOR ALL**

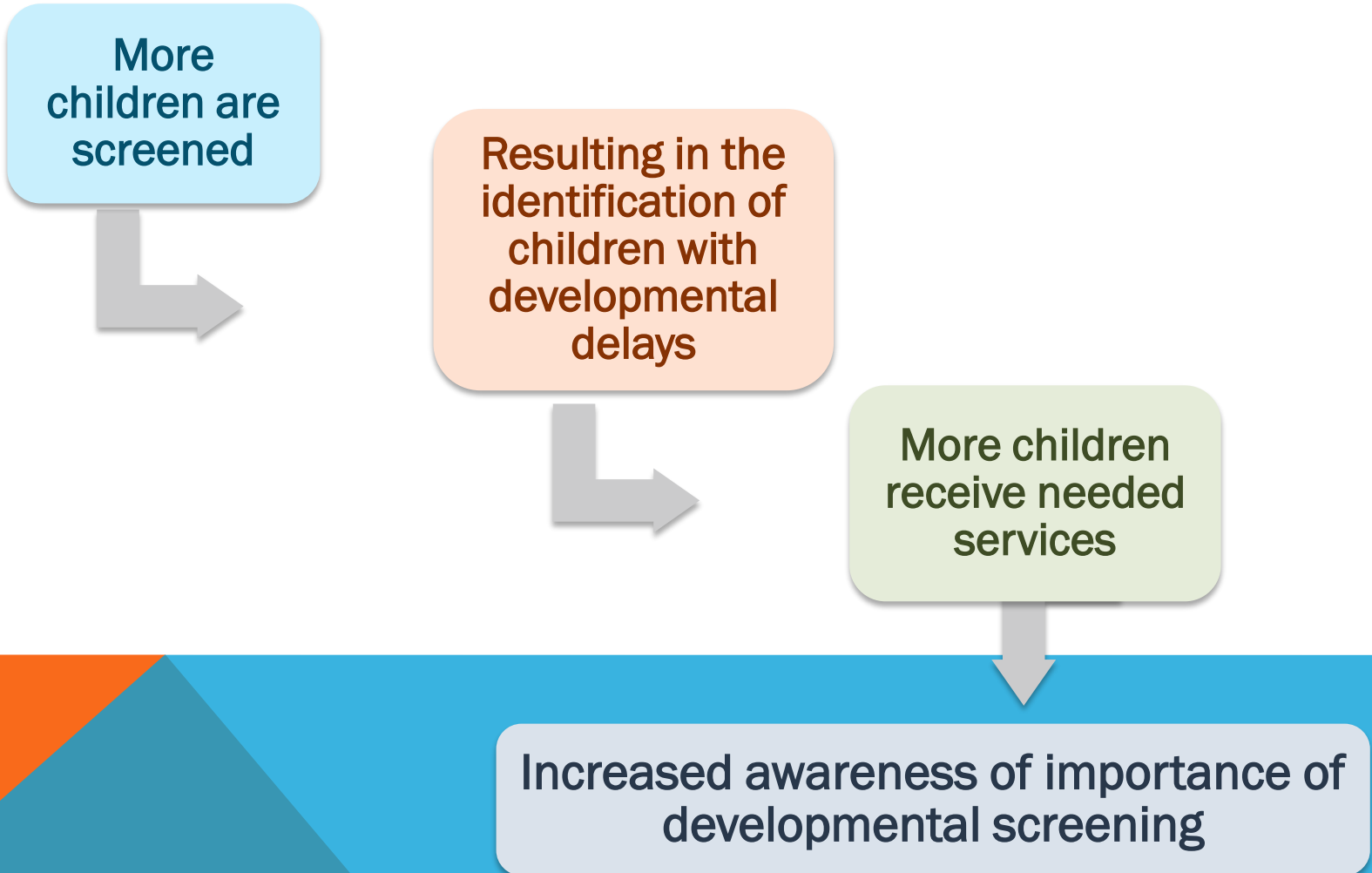
- **Universal Screening as a Child Find Effort**
- **Implementing a Statewide System**
- **Program Implementation at the Local Level:  
Sprout Family Services**



**PROMOTING UNIVERSAL  
SCREENING AS A CHILD FIND  
EFFORT**  
ALASKA

- Defining the Path
- Taking First Steps
- Learning to Walk
- Finding our Stride
- Overcoming Roadblocks
- Enjoying the View

# DEFINING THE PATH: DESIRED OUTCOMES



# DEFINING THE PATH

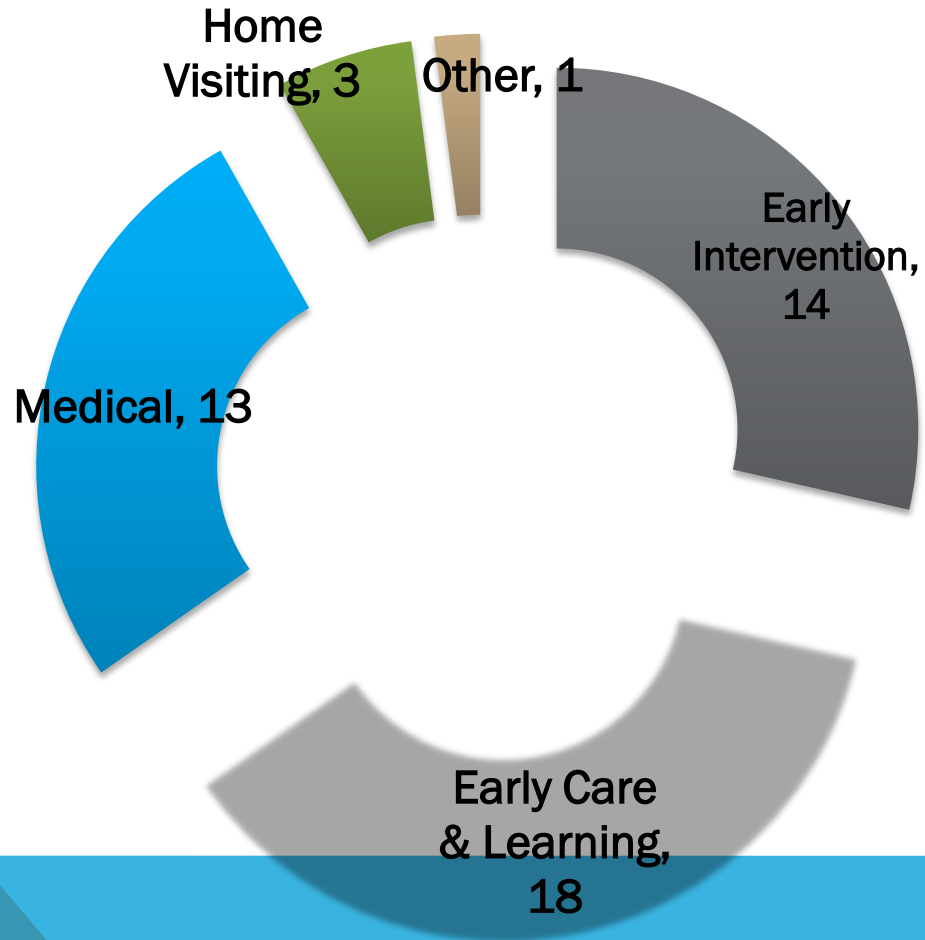
## PART C (EARLY INTERVENTION/INFANT LEARNING IN AK) FEDERAL REGULATIONS

The Individuals with Disabilities Education Act (IDEA) requires a(n effective) comprehensive child find system which *includes* a referral mechanism for early intervention services.

- With timelines, primary referral participation, and rigorous standards of evaluation – §303.302 (a)
- All infants and toddler potentially eligible are identified, located and **evaluated** – §303.302(b)

# TOTAL NUMBER OF PROGRAMS BY PROGRAM TYPE (MARCH 2014)

N = 49



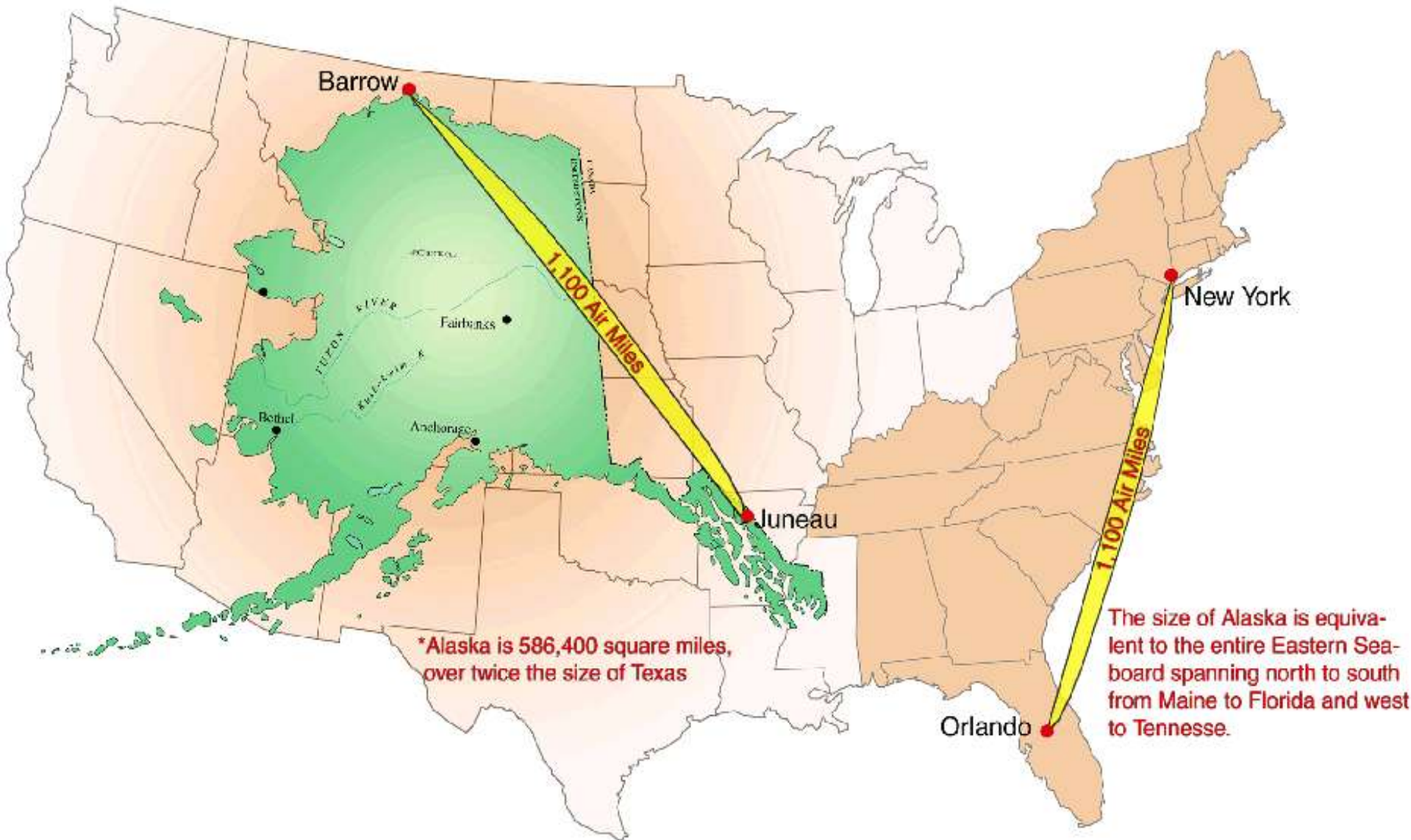
# DEFINING THE PATH: GATHERING DATA

- Child find efforts defined for 16 Part C Early Intervention/Infant Learning Program (ILP) grantees
  - Health fairs
  - Local PSA
  - Outreach to clinics and hospitals
- Identification Outcomes
  - 13 — Percentage of children 0-3 experiencing delays or disabilities (Rosenburg, S., Zhang, D. & Robinson, C., 2008)
  - 6 — Percentage of children 0-3 Alaska serves annually through Part C (ILP database)
- Assuring Better Child Development Project
  - Infusing/supporting screening efforts (2006-2008)

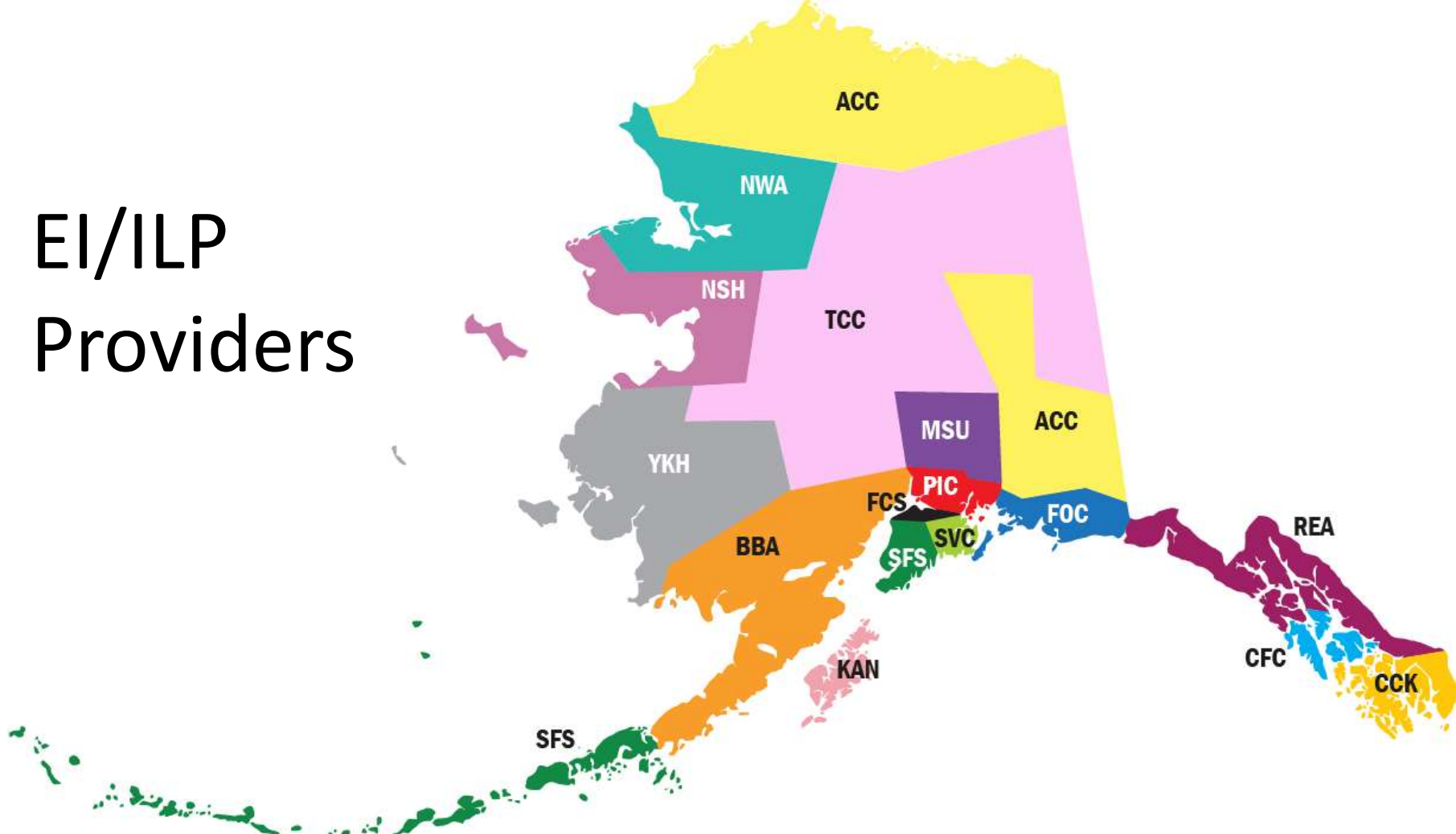


# ALASKA

## SIZE AND DISTANCE COMPARISON



# EI/ILP Providers



ACC	Alaska Center for Children and Adults	Fairbanks, North Slope, Copper River & Delta/Greeley	MSU	Mat-Su Services for Children and Adults	Palmer, Wasilla, Mat-Su Borough
BBA	Bristol Bay Area Health Corporation	Bristol Bay Region	NSH	Norton Sound Health Corporation	Nome Region
CCK	Community Connections	Ketchikan, Prince of Wales Island, Metlakatla	NWA	Northwest Arctic Borough School District	Kotzebue Region
CFC	Center for Community Sitka	Sitka, Kake, Angoon	PIC	Programs for Infants and Children	Anchorage Bowl, Girdwood & Whittier
FCS	Frontier Community Services	Kenai/Soldotna Region	REA	REACH Inc.	Juneau, Haines, Petersburg & Wrangell
FOC	Family Outreach Center for Understanding Special Needs	Eagle River, Chugiak, Cordova, Valdez and JBER	SFS	Spout Family Services	Aleutian and Pribilof Islands
SFS	Sprout Family Services	Homer Region	SVC	SeaView Community Services	Seward Region
KAN	Kodiak Area Native Association	Kodiak Island	TCC	Tanana Chiefs Conference	Interior Region
			YKH	Yukon Kuskokwim Health Corporation	Bethel Region

# YUKON KUSKOKWIM REGION



# TAKING FIRST STEPS

## Understanding landscape of screening


- What programs/practices were using *standardized* tools?
- What tools were being used?
- What other initiatives ongoing?
  - EPSDT
  - MCHAT

## Reviewed time, effort and cost data


- Proposed purchase of online ASQ with licenses for each regional agency with option to *expand usage to primary referral sources*.

# LEARNING TO WALK

## Building partnerships

- Early Childhood Comprehensive Systems
  - Early Periodic Screening Diagnosis Treatment (EPSDT) work group recommended the use of the ASQ
  - Head Start
  - Parents as Teachers
  - Alaska Pediatric Partnership
- 

# FINDING OUR STRIDE

- Limited Pilot with EI/ILP for feasibility
  - Contract to provide ongoing support to assist EI/ILP agencies to adopt
  - ECCS & Alaska Mental Health Board secured funds to engage (implement) in statewide education effort
  - Contractual agreement with EI/ILP agencies requires providing access to ASQ for primary referral sources
- 

# OVERCOMING ROADBLOCKS

## Bringing agendas together

- Different advocacy arms wanted different tools to begin with
  - PEDS
  - Denver
  - MCHAT

Medical providers and HIPAA

Electronic Medical

Record/Data integration



# ENJOYING THE VIEW

- **Unified System of Early Childhood Partners pulling together to offer Universal Screening**
- **Dashboard, Dashboard, Dashboard**
  - EI/ILP agencies can manage the data
  - Results of screening- higher referrals by region?



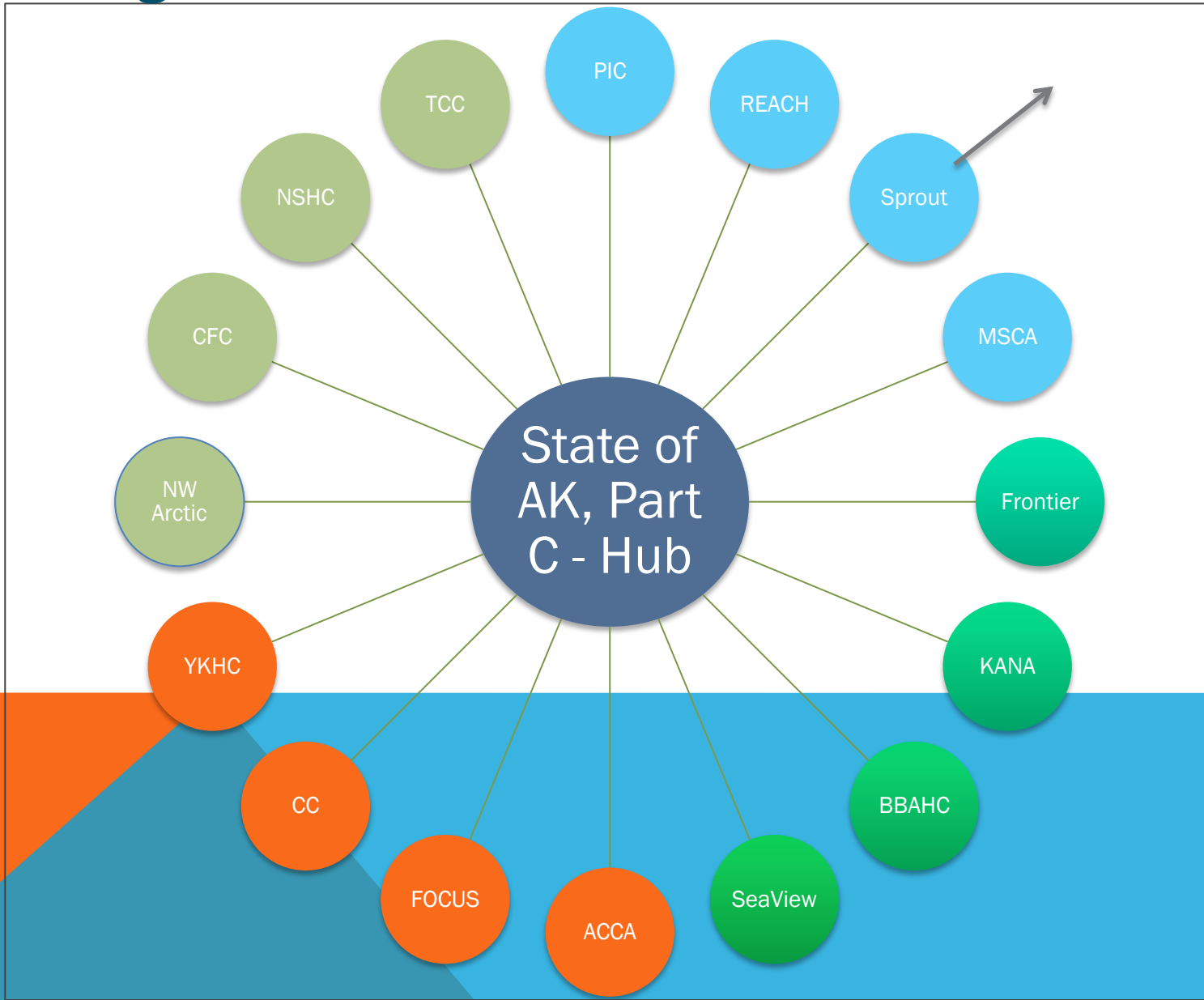
# IMPLEMENTATION

HOW ALASKA IS IMPLEMENTING A STATEWIDE SYSTEM

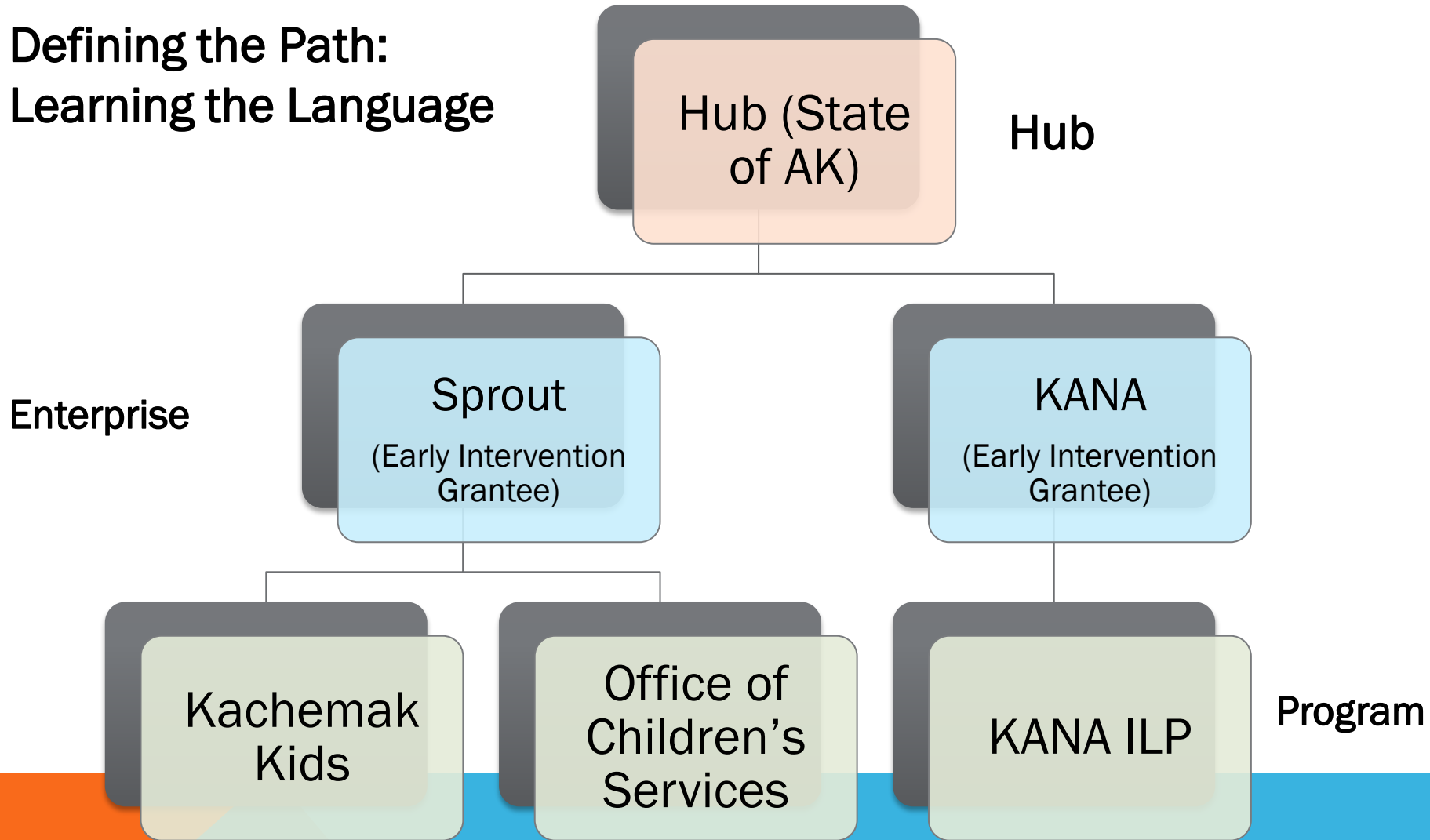
- Defining the Path
- Taking First Steps
- Learning to Walk
- Finding our Stride
- Overcoming Roadblocks
- Enjoying the View

# Defining the Path:


# Alaska's Vision




# Defining the Path: Learning the Language



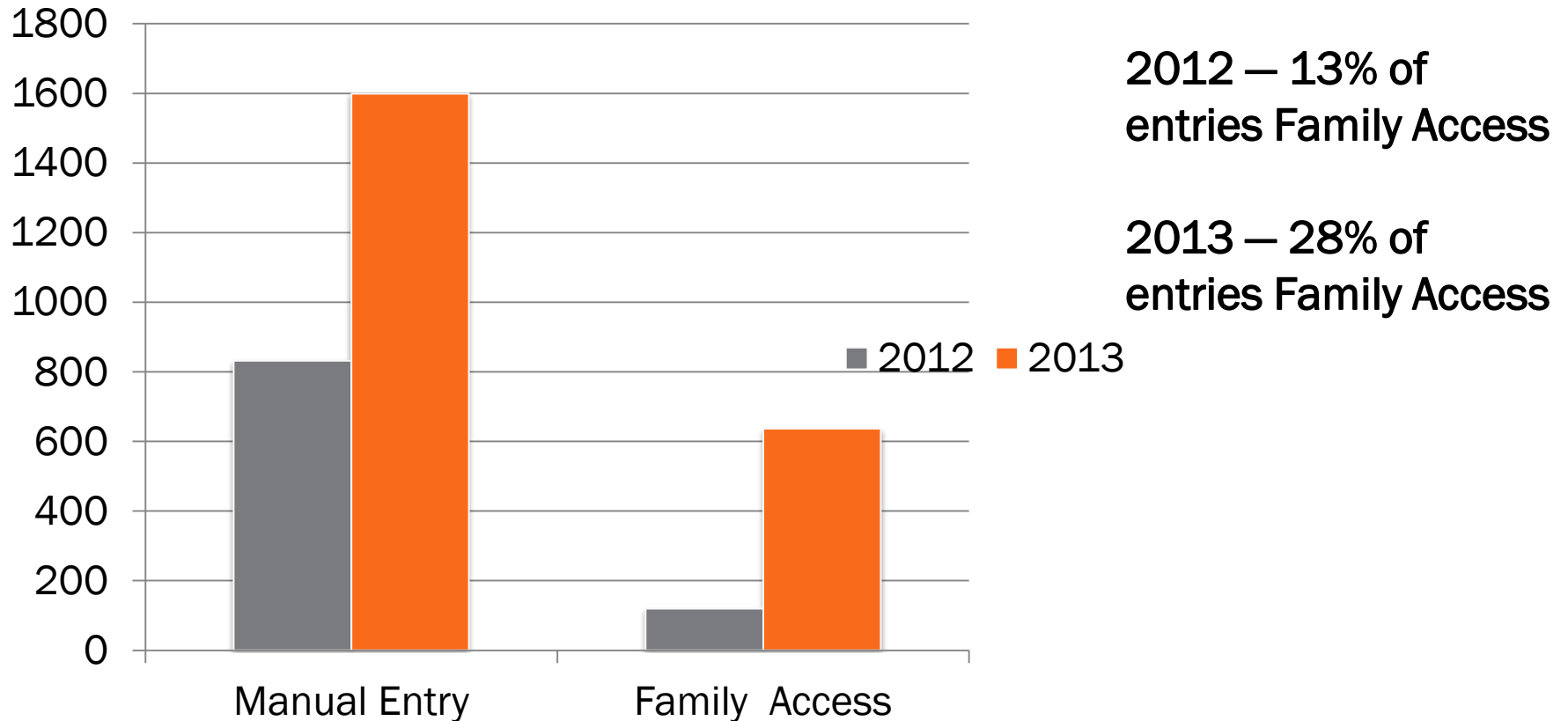
# FIRST STEPS

- ILP Agencies establish Enterprise Accounts
  - Learning the ASQ Online system
  - Establish Training Schedule
  - Adding Family Access
  - Ongoing Support (teleconferences, problem solving, TA)
- 

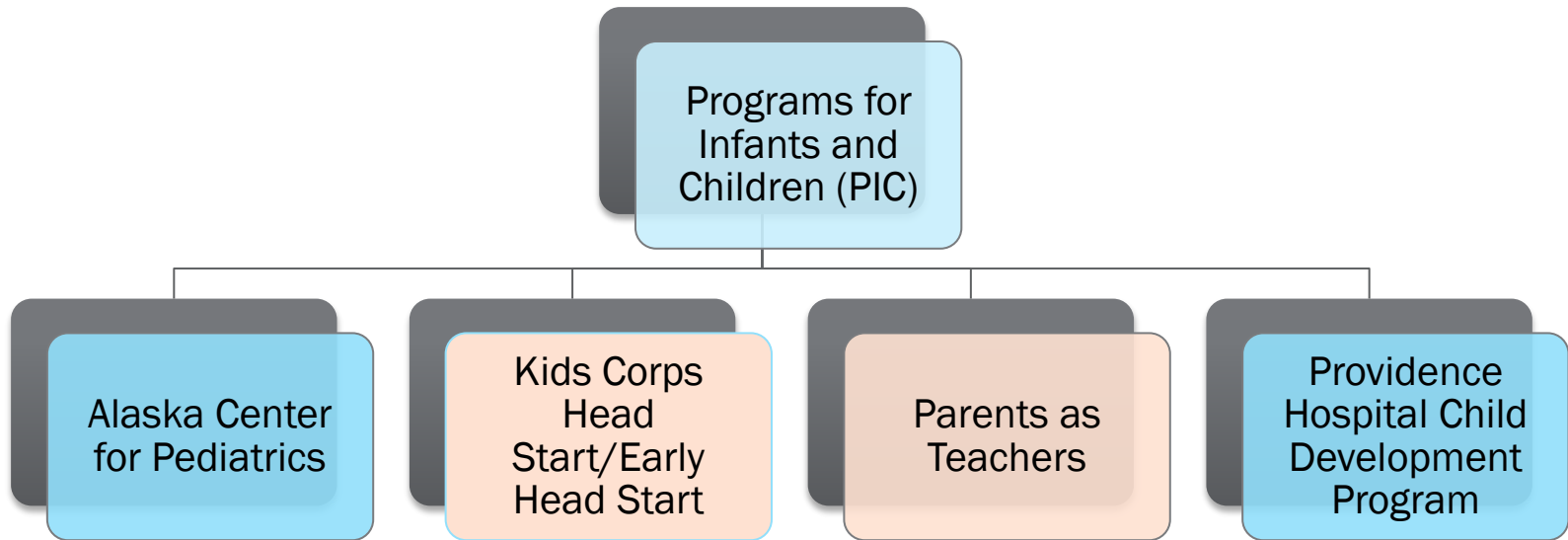
# LEARNING TO WALK: FAMILY ACCESS

- Adding Family Access to each Enterprise
  - Allows families to complete screening online
  - Increases access to screening
  - Also can be completed with health or early care provider
  - Eliminates duplication of data entry
- 

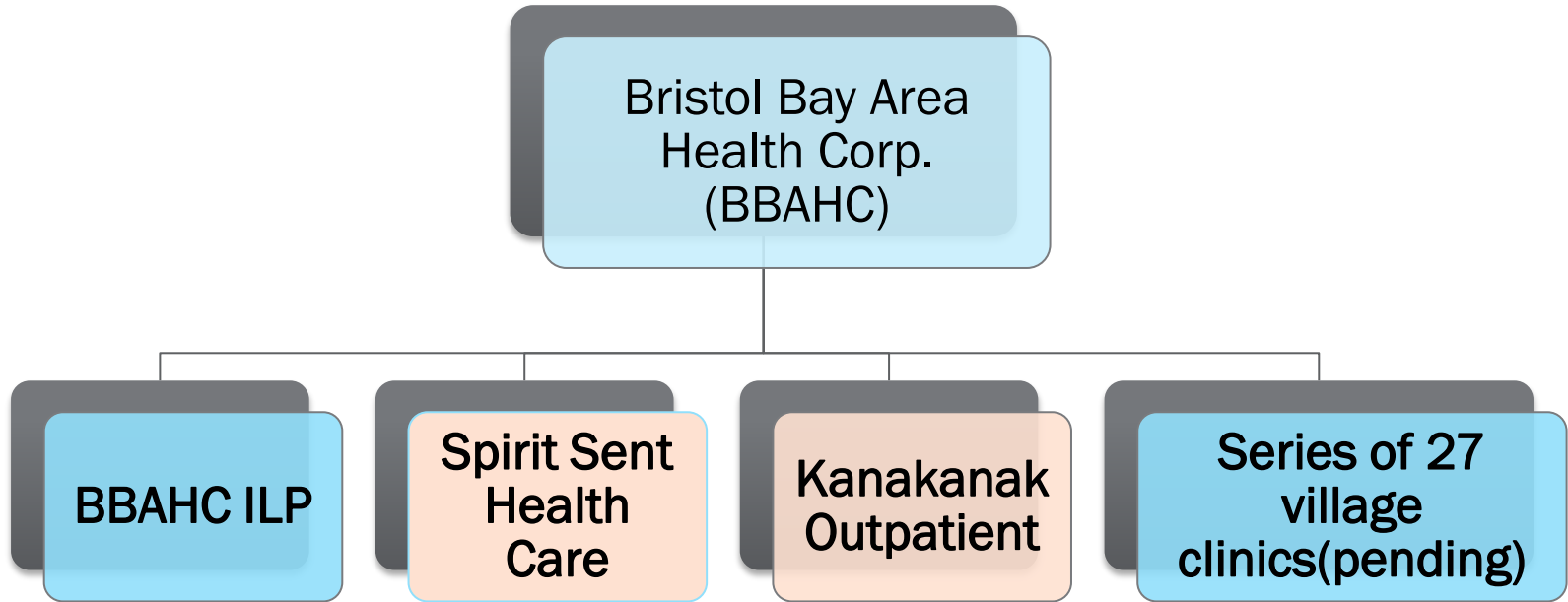
## Data Entry Method – Manual vs. Family Access



**Learning to Walk: Family Access**



**Finding Our Stride: Adding Programs**



**Finding Our Stride: Adding Programs**



# **FINDING OUR STRIDE: ADDING PARTNERS**

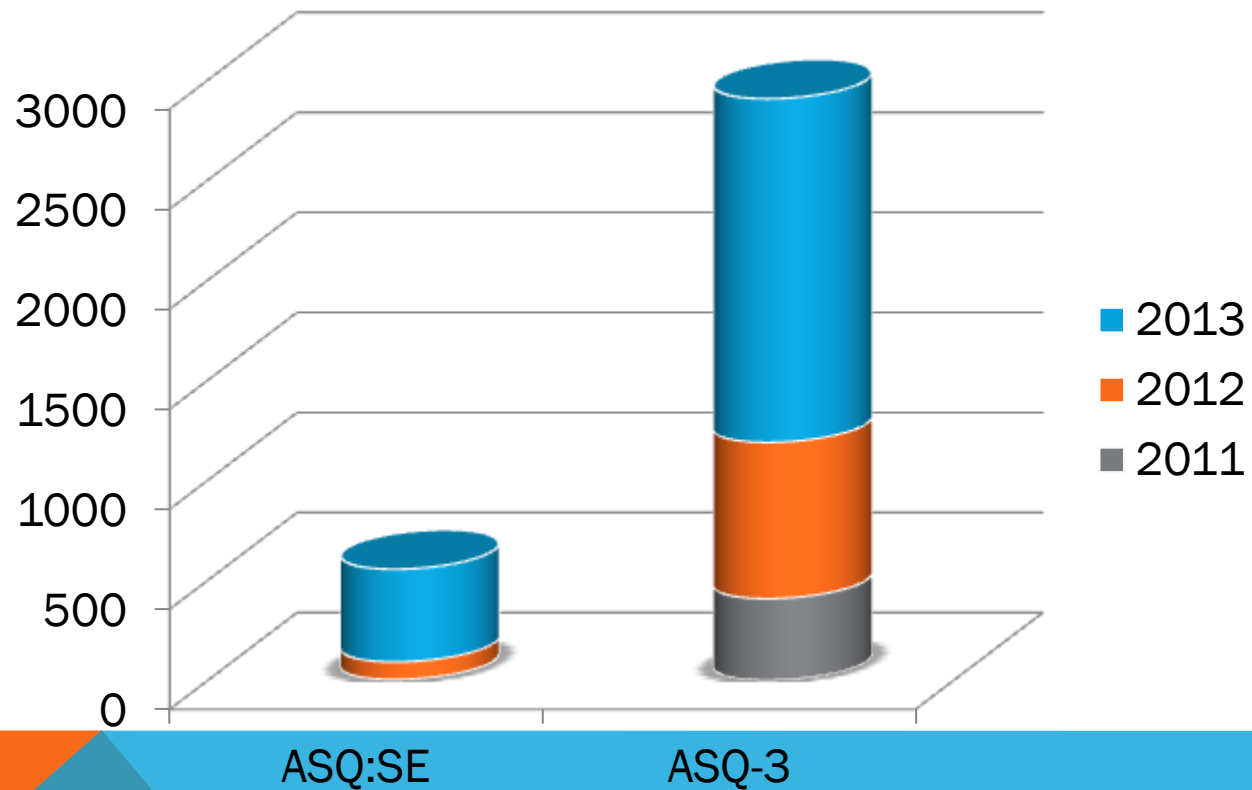
## **STATEWIDE**

- **Head Start/Early Head Start**
- **Public Health Nursing**
- **Tribal Health System**
- **Parent as Teachers**
- **School District**


## **COMMUNITY**

- **Kids Corp. HS/EHS**
- **Juneau PAT**
- **Dena'ina Health Clinic**
- **Office of Children's Services (Homer)**
- **SCF Family Center**
- **FNA Birth to Five**


# Screen Usage by Type: Comparison Over Time



# OVERCOMING ROADBLOCKS

- Duplicate Data Entry
  - Security / Confidentiality Issues
  - Technology Insecurities
  - Staffing and Resources
  - Readiness
- 

# ENJOYING THE VIEW

- Shared Screening Effort
  - Increased Role for Parents
  - Increased Number of Children Screened
  - Increased Ability to Track Data
  - Strengthened Partnerships
- 

# **SPROUT FAMILY SERVICES:** PROGRAM IMPLEMENTATION

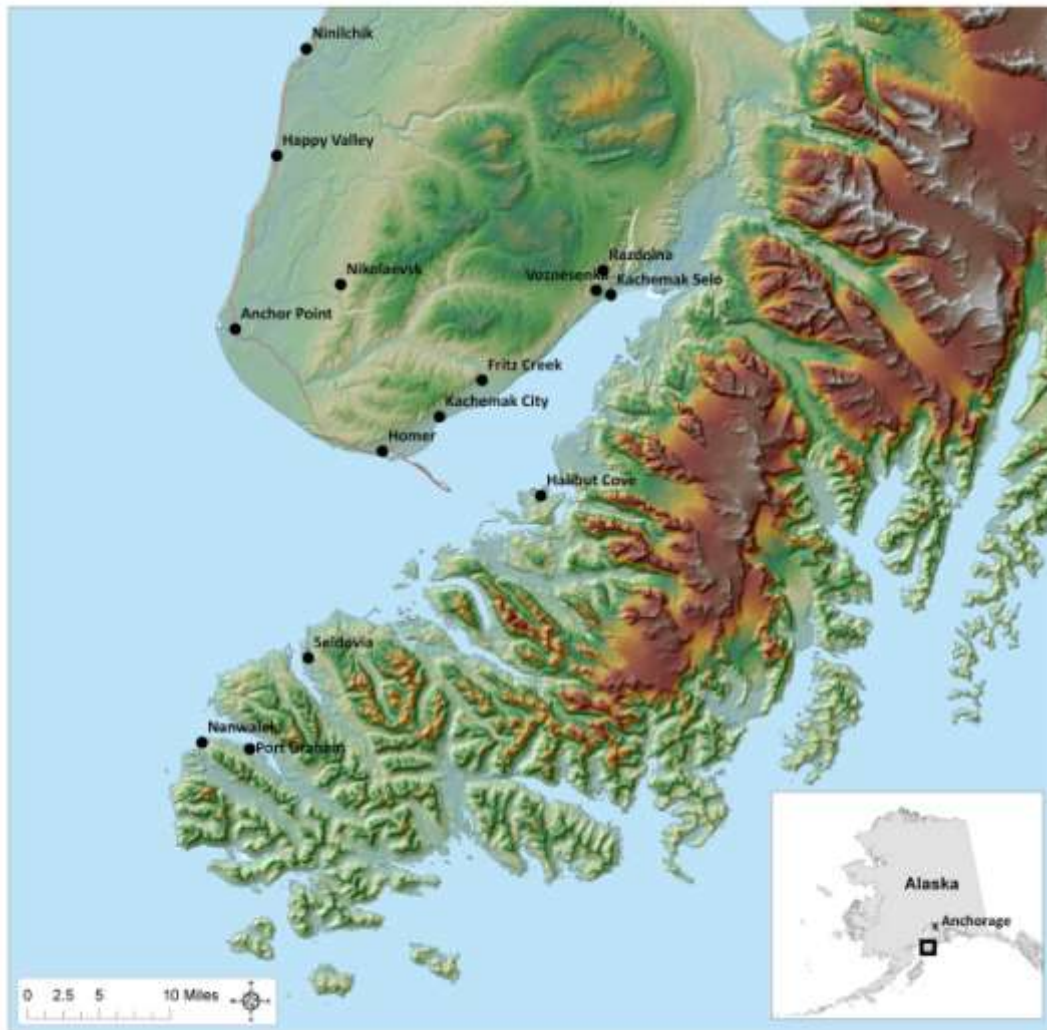
- Defining the Path
- Taking First Steps
- Learning to Walk
- Finding our Stride
- Overcoming Roadblocks
- Enjoying the View

# SPROUT FAMILY SERVICES: PROGRAM IMPLEMENTATION



Where families develop and grow.

# SPROUT




# SPROUT'S PAST CHILD FIND EFFORTS

## VISIT 10 INDIVIDUAL COMMUNITIES ONCE A YEAR

- Cost
  - Day rate of staff + 2 hours prep for travel: \$4,000
  - Travel (plane tickets or gas reimbursement): \$1,214
  - Loss of staff client services? (not calculated)
  - Total cost of 10 days: \$5,214
- Outcomes of past efforts
  - 52 ASQ/SE complete, leading to 12 referrals to Infant Learning Services



# TAKING FIRST STEPS: WHAT DID IT TAKE TO GET “READY”?

- Step 1: Set up inter-agency account
  - Step 2: Assign staff to manage
  - Step 3: Train all staff in ASQ database & provide on-going support
  - Step 4: Repeat step 4!
- 

# LEARNING TO WALK: FAMILY ACCESS



Pick.  
Click.  
Give.



Homer, AK 99603

[www.sproutalaska.org](http://www.sproutalaska.org)

Welcome to Sprout's online ASQ system! These questionnaires are a series of questions regarding all different areas of development. They help indicate if your child could benefit from further assessment in any specific area. Your child will probably be able to complete most, but not all of these activities. It is best to try and make filling these out a fun, learning experience for you and your family. It can be fun, and is most effective, when these activities are done together while filling out the questionnaire and an attempt to make a game from them can turn it into a great experience! Please remember that it is important to completely fill out the questionnaire and information as best you can. Feel free to contact us with any questions or concerns you may have.

Because your child's first 5 years of life are so important, we want to help you provide the best start for your child. You've been invited to participate in the *Ages & Stages Questionnaires, Third Edition (ASQ-3)*, to help you keep track of your child's development. The questionnaire may be provided every 2-, 4- or 6-month period. You will be asked to answer questions about some things your child can and cannot do. The questionnaire includes questions about your child's communication, gross motor, fine motor, problem solving, and personal social skills.

Please enter your child's birth date and the number of weeks he or she was born premature below to start the screening. Please note that the information you enter into this website is secure and cannot be seen or accessed by anyone other than the program employees who have invited you to participate in this screening.

We look forward to your participation in ASQ-3!

**Child Date of Birth**

Format: YYYY-MM-DD

**Weeks Premature**

(put "0" if not premature)

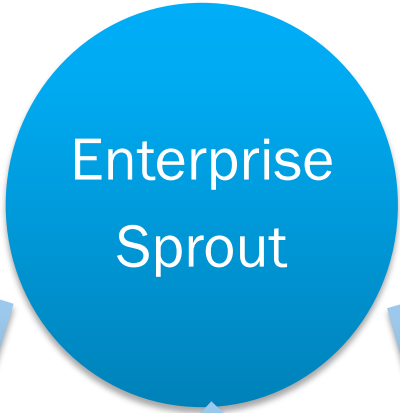
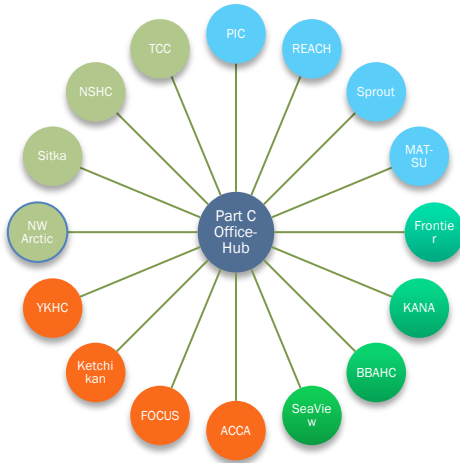
By continuing and completing the ASQ online you are agreeing to a consent for the screening of your child and have read and understand the information regarding ASQ online.

Note: By clicking "Submit", you are agreeing to both our [Family Access End User License Agreement](#) and any other consent or authorization information outlined on this page.

# FINDING OUR STRIDE



# FINDING OUR STRIDE



# SPROUT AND THE OFFICE OF CHILDREN'S SERVICES



**Sprout Inc.**  
Liked · August 21

Office of Children's Services Homer Field Office @ Sprout today for Child Development Screening training! Wonderful community collaboration! — with Sprout Playgroup and Jillian Lush.

Tag Photo Add Location Edit

Like · Comment · Share · Edit

Jen Lush-Fonkert, Jamie Cloud, Corina Hancock and 11 others like this.

**Pamela Baltzer** Awesome group! Thank you for your help and support in our community!  
August 22 at 6:05am via mobile · Like · 2

Write a comment...

Sponsored Create Ad

**New Frye Boots at Zappos®**  
zappos.com



Shop Frye riding boots, cowboy boots, slouch boots, & more. Free shipping & free returns.

# OVERCOMING ROADBLOCKS

- Parents
- Staff
- Partners



# ENJOYING THE VIEW

- Parents - More parents are screening their children
- Staff – Staff are spending more of their time in assessment and intervention, instead of screening
- Partners - Child Find is an on-going community-wide effort





**THANK YOU!**

FEEL FREE TO CONTACT US WITH QUESTIONS!