

HIV Surveillance Report — Alaska, 1982–2016

From January 1, 1982 through December 31, 2016, 1,757 cases of human immunodeficiency virus (HIV) infection were reported to the Alaska Section of Epidemiology (SOE), including cases with an initial diagnosis in Alaska and those previously diagnosed out-of-state who are living in Alaska (Table). During 2016, 76 cases of HIV infection were reported to SOE; 38 (50%) of which were initially diagnosed in Alaska, yielding a 2016 statewide incidence rate of 5 cases per 100,000 persons. An outbreak of HIV occurred among men who have sex with men (MSM) in a rural Alaska village in 2016 (n=5); details available in an Epidemiology Bulletin available at: http://www.epi.alaska.gov/bulletins/docs/b2017_01.pdf. This HIV Surveillance Report contains summary data and highlights for cumulative cases reported from 1982 through 2016 (n=1,757), incident cases diagnosed in Alaska in 2016 (n=38), and Persons Living with HIV in Alaska as of December 31, 2016 (n=692).

Table. Summary of Reported Cases of HIV by Select Characteristics — Alaska, 1982–2016

	1982–2016				2016			
	All Reported Cases n=1,757		Reported Cases First Diagnosed in Alaska n=1,197		All Reported Cases n=76		Reported Cases First Diagnosed in Alaska n=38	
	Male	Female	Male	Female	Male	Female	Male	Female
HIV (non-AIDS)	461	143	294	103	42	12	24	8
HIV with AIDS	949	204	648	152	15	7	6	0
TOTAL #	1,410	347	942	255	57	19	30	8
Age at Diagnosis in Years, #								
<14	12	11	8	5	1	0	0	0
15–24	201	65	114	42	9	1	5	0
25–34	551	122	344	90	30	5	15	2
35–44	424	84	291	63	11	9	5	3
45–54	162	49	131	41	2	1	1	1
55–64	46	13	41	11	3	2	3	1
≥65	14	3	13	3	1	1	1	1
Race/Ethnicity, #								
American Indian/ Alaska Native (AI/AN)	238	116	206	110	13	5	12	5
Asian	23	18	13	12	5	2	2	1
Black	178	57	103	30	12	4	4	1
Hispanic	129	27	77	19	4	3	2	1
Native Hawaiian/ Pacific Islander (NH/PI)	8	2	7	1	0	0	0	0
White	805	121	525	80	21	4	9	0
Multi-race (Multi)	29	6	11	3	2	1	0	0
Transmission Category, #								
Male-to-Male Sex Injection Drug Use (IDU)	889	0	595	0	49	0	25	0
Male-to-Male Sex and IDU	135	66	91	43	1	2	0	0
Heterosexual Contact	139	0	67	0	3	0	2	0
Perinatal	93	242	72	183	1	17	1	8
Other/Not Specified	7	11	4	5	1	0	0	0
	147	28	113	24	2	0	2	0
Residence at Time of Diagnosis, #								
Anchorage/Mat-Su	663	158	663	158	19	4	18	4
Gulf Coast	55	13	55	13	0	1	0	1
Interior	91	34	91	34	2	2	1	2
Northern	15	8	15	8	1	0	1	0
Southeast	59	23	59	23	3	1	3	1
Southwest	43	15	43	15	6	0	6	0
Alaska-Not Specified	16	4	16	4	1	0	1	0
Out of State/Country	468	92	0	0	25	11	0	0



Cumulative Reported Cases of HIV, 1982–2016

Highlights Cumulative HIV Cases 1982–2016, n=1,757

- 1,153 (66%) ever had a diagnosis of AIDS
- 623 (35%) are known to have died
- 1,410 (80%) were male
- 889 (51%) were Men Who Have Sex with Men (MSM); 335 (19%) were Heterosexual (Hetero)
- 926 (53%) were White; 354 (20%) were Alaska Native/American Indian; 235 (13%) were Black
- 1,197 (68%) had an initial diagnosis in Alaska; 821 (69%) of those were living in Anchorage/Mat-Su at the time of diagnosis

Figure 1. Cumulative Reported Cases of HIV and Known Deaths by Year of Diagnosis, Alaska — 1982–2016

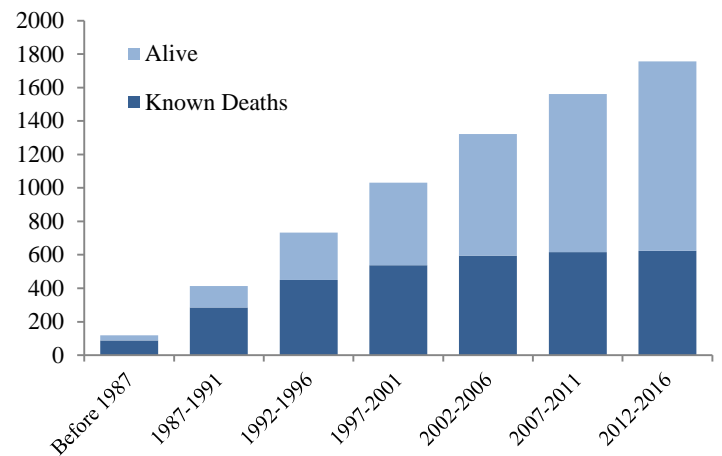


Figure 2. Cumulative Reported Cases of HIV by Age at Diagnosis and Gender, Alaska — 1982–2016

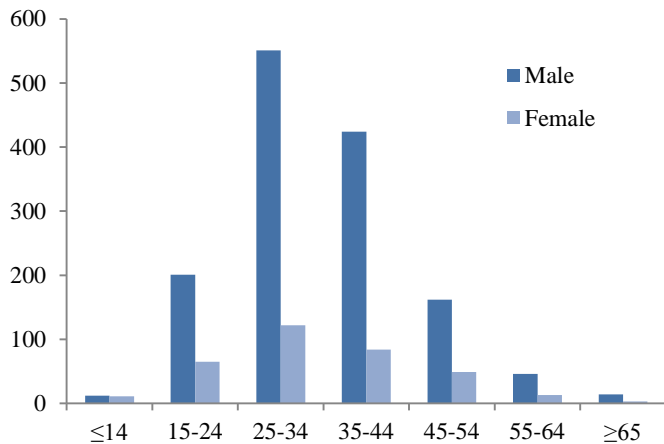


Figure 3. Cumulative Reported Cases of HIV by Race/Ethnicity and Gender, Alaska — 1982–2016

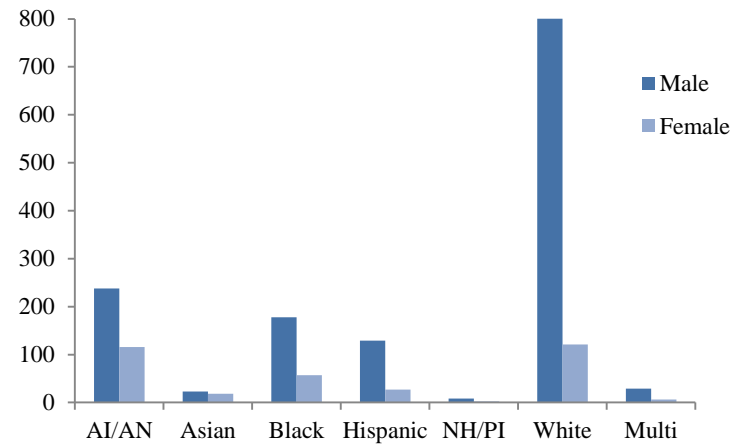


Figure 4. Cumulative Reported Cases of HIV by Transmission Category, Alaska — 1982–2016

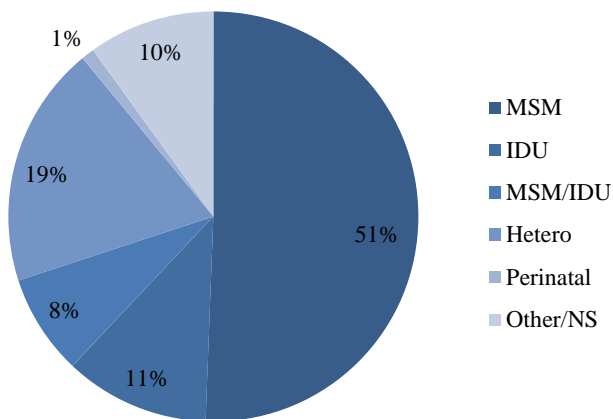
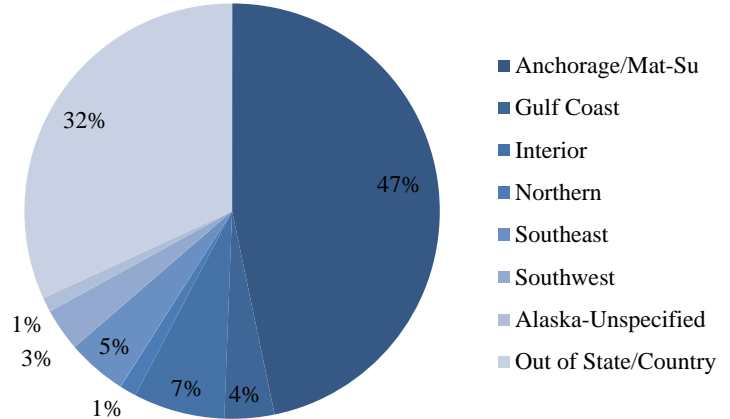


Figure 5. Cumulative Reported Cases of HIV by Residence at Diagnosis, Alaska — 1982–2016



Reported Cases of HIV Newly Diagnosed in Alaska, 2016

Highlights Newly Diagnosed HIV Cases 2016, n=38

- 6 (16%) were also diagnosed with AIDS
- None are known to have died
- 30 (79%) were male
- 25 (66%) were Men Who Have Sex with Men (MSM); 9 (24%) were Heterosexual
- 9 (24%) were White; 17 (45%) were Alaska Native/American Indian; 5 (13%) were Black
- 22 (58%) were 34 years old or younger at the time of diagnosis
- 22 (58%) were living in Anchorage/Mat-Su at the time of diagnosis

Figure 6. Reported Cases of HIV Newly Diagnosed in Alaska by Year — 2007–2016

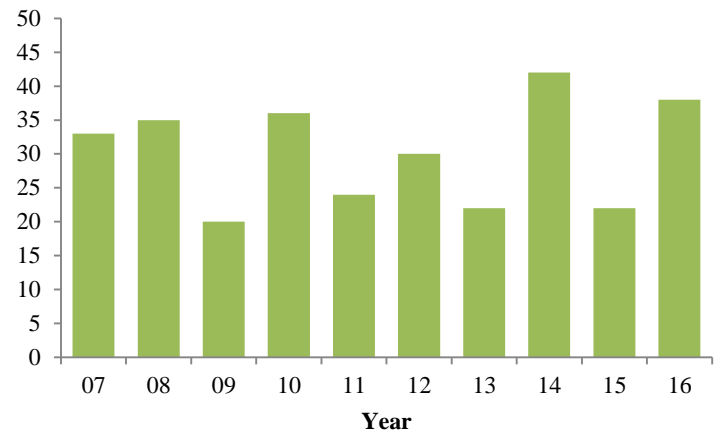


Figure 7. Reported Cases of HIV Newly Diagnosed in Alaska by Age at Diagnosis and Gender — 2016

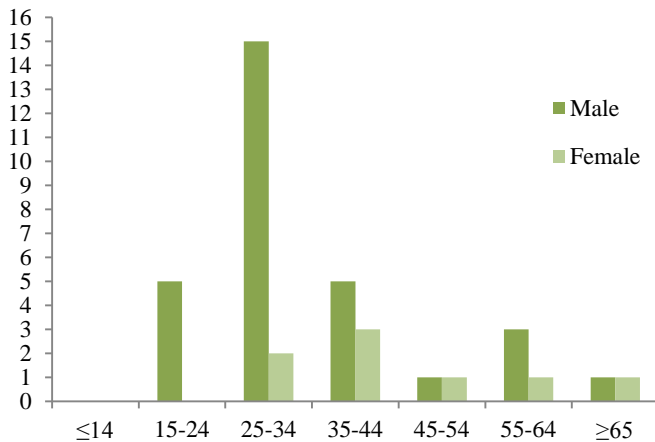


Figure 8. Reported Cases of HIV Newly Diagnosed in Alaska by Race/Ethnicity and Gender — 2016

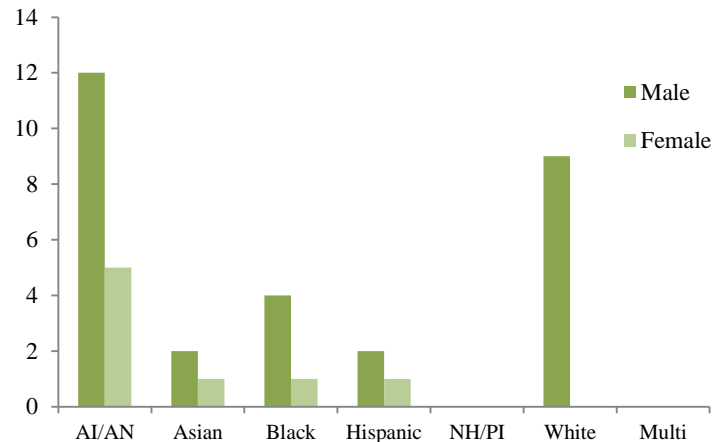


Figure 9. Reported Cases of HIV Newly Diagnosed in Alaska by Transmission Category — 2016

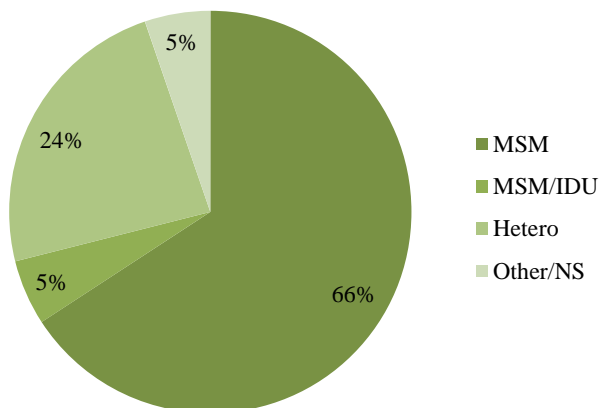
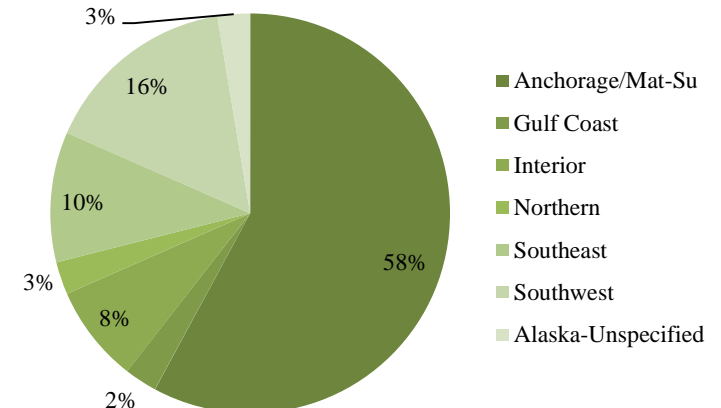


Figure 10. Reported Cases of HIV Newly Diagnosed in Alaska by Residence at Diagnosis — 2016



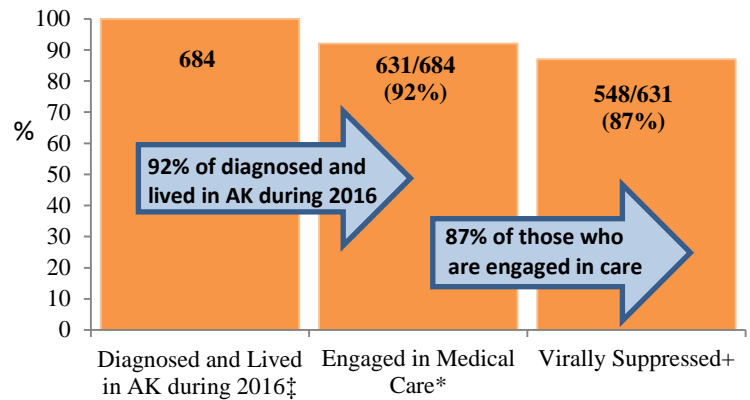
Persons Living with HIV/AIDS in Alaska as of December 31, 2016

Highlights

Persons Living with HIV in Alaska As of December 31, 2016, n=692

- 380 (55%) ever had a diagnosis of AIDS
- 520 (75%) were male
- 326 (47%) were Men Who Have Sex with Men (MSM); 181 (26%) were Heterosexual
- 292 (42%) were White; 181 (26%) were Alaska Native/American Indian; 101 (15%) were Black
- 463 (67%) had an initial diagnosis in Alaska; 310 (67%) of those were living in Anchorage/Mat-Su at the time of diagnosis
- 92% of those thought to be living with HIV in Alaska during 2016 were engaged in medical care, and of those 87% were virally suppressed

Figure 11. HIV Care Continuum, Alaska — 2016 (n= 684)



[‡] Includes all cases who lived in Alaska (AK) during 2016 (n=704). Cases with unknown residence and no activity in the surveillance system for ten or more years were excluded (n=20).

* Received at least one CD4/Viral Load between Jan. 1 and Dec. 31, 2016.
+ Viral Load ≤200 copies/mL.

Figure 12. Persons Living with HIV/AIDS in Alaska by Age at Diagnosis and Gender — As of December 31, 2016

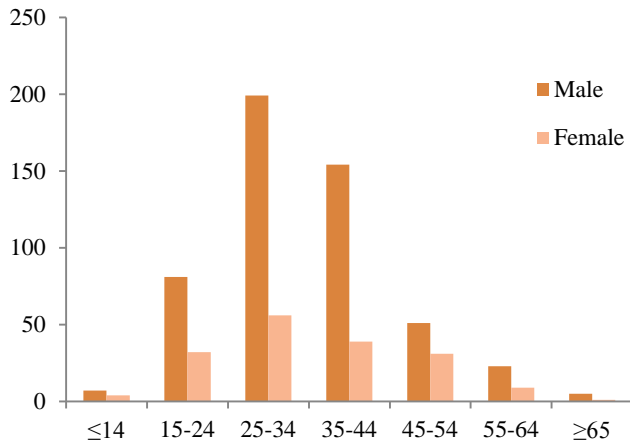


Figure 13. Persons Living with HIV/AIDS in Alaska by Race/Ethnicity and Gender — As of December 31, 2016

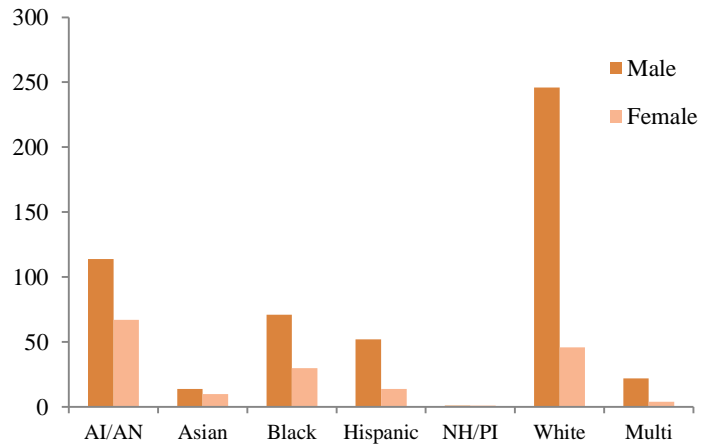


Figure 14. Persons Living with HIV/AIDS in Alaska by Transmission Category — As of December 31, 2016

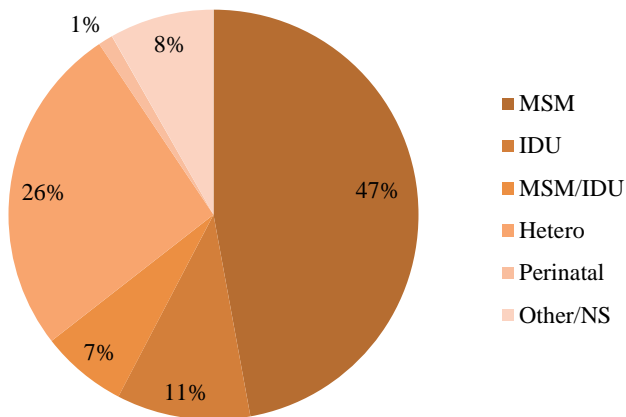


Figure 15. Persons Living with HIV/AIDS in Alaska by Residence at Time of Diagnosis — As of December 31, 2016

