

# BIRTHS



*"The Embrace"*  
Copyright Rie Munoz, Ltd.

## INTRODUCTION

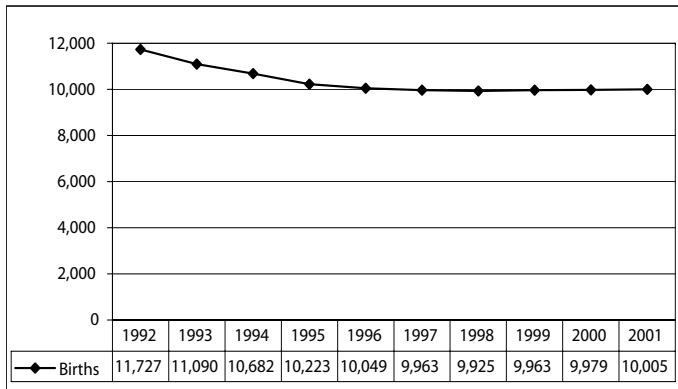
The Alaska birth certificate provides information about each baby born in Alaska, regardless of the mother's residence state. Through a vital statistics cooperative agreement, birth information is also collected for Alaska mothers who have a baby in another state. Thus, the Bureau of Vital Statistics Information System contains records on all births occurring in the state and all births to residents of Alaska.

The birth certificate contains information about the mother, the father, the pregnancy, and the child. Birth information is collected in hospitals and birth centers

from worksheets completed by parents or medical staff, from medical charts, or by a combination of these sources. Midwives and family members who deliver a baby collect the birth information from their records or from a parent and complete the birth certificate.

This chapter reports information from the birth certificate such as pregnancy history, parents' education, prenatal care, mother's health risk behaviors, and birth weight, which can be used to monitor and help improve the health of mothers and children.

FIGURE 1 ALASKA RESIDENT BIRTHS, 1992–2001

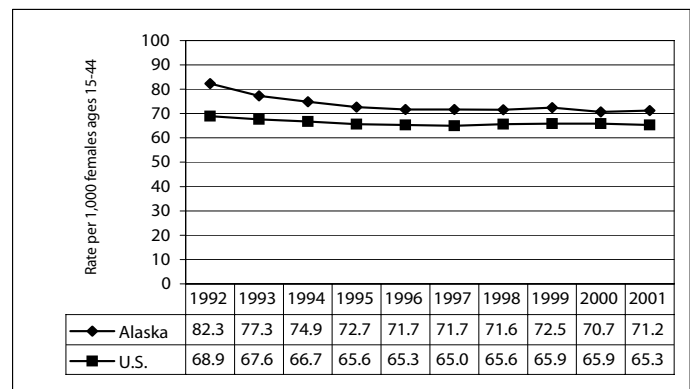


There were 10,005 live births to Alaska residents in 2001 (Figure 1). This is an increase of 0.3 percent from the 9,979 births recorded in 2000. Of these births, 5,147 were boys and 4,858 were girls. Of the 10,005 births in 2001, 147 were multiple births with 146 sets of twins and 1 set of triplets.

The natural increase in Alaska’s population (the increase of births over deaths) was 7,015 persons, representing a natural increase rate of 11.1 persons per 1,000 population. This is a 1.8 percent decrease from the natural increase rate of 11.3 recorded in 2000.

The 2001 crude birth rate of 15.8 per 1,000 population represents a 0.6 percent decrease from the 2000 crude birth rate of 15.9, and a 21.0 percent decrease from the crude birth rate of 20.0 per 1,000 population recorded in 1992. The 2001 crude birth rate for the United States was 14.1 live births per 1,000 population<sup>1</sup>, which is a decline of 11.3 percent from the rate of 15.9 in 1992.

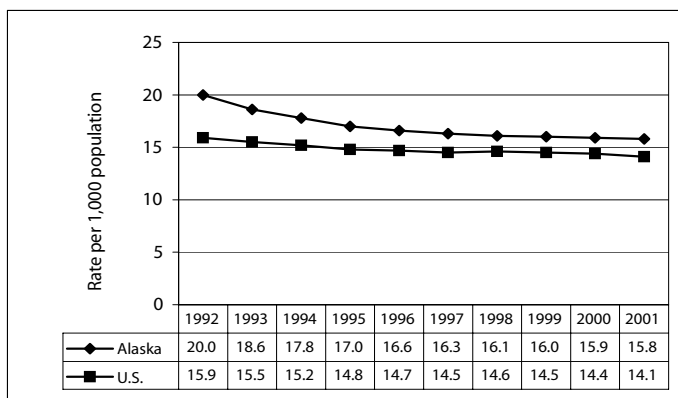
FIGURE 3 FERTILITY RATES: U.S. AND ALASKA, 1992–2001



In order to calculate crude birth rates (Figure 2), fertility rates, or any of the other rates used in this report, population estimates must be used. Population estimates are provided by the Department of Labor, Research and Analysis Section, Demographics Unit. Due to the way race information was collected in the 2000 census, population estimates by race are not comparable to previous estimates. The Department of Labor has developed smoothed bridge estimates so that 2000 population estimates by race are comparable to previous estimates. When reporting rates by race, this report uses smoothed bridge estimates. Please refer to Appendix I for the population estimates used in this report.

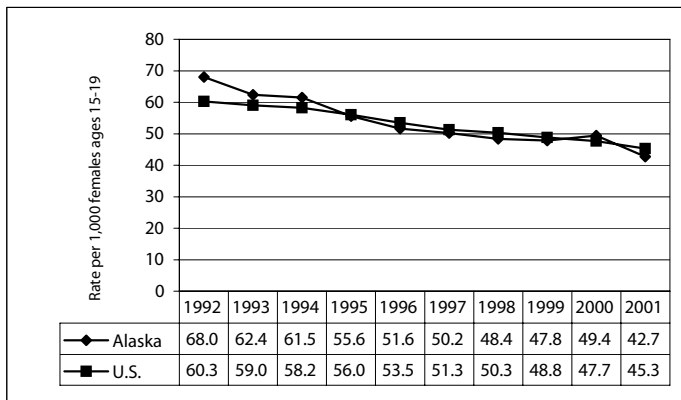
The fertility rate (Figure 3) is a more meaningful measure of behavioral patterns than the crude birth rate since it is a measure of the number of births compared to the number of women of usual child-bearing age (15-44 years). The 2001 fertility rate for Alaska was 71.2 births per 1,000 women, representing a 0.7 percent increase from the 2000 fertility rate of 70.7. Alaska’s fertility rate was 9.0 percent higher than the U.S. fertility rate of 65.3 in 2001.

FIGURE 2 CRUDE BIRTH RATES: U.S. AND ALASKA, 1992–2001



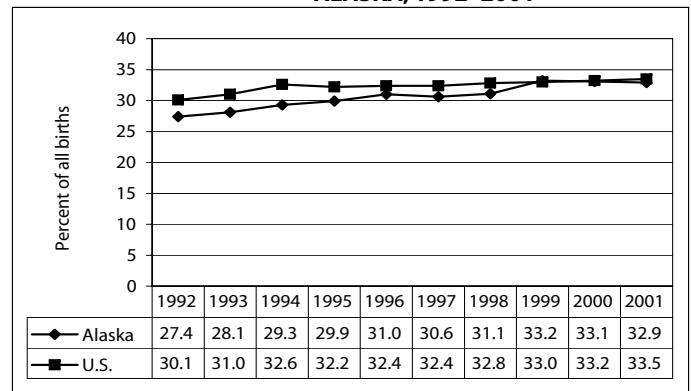
<sup>1</sup>National Center for Health Statistics, U.S. Department of Health and Human Services, “Births: Final Data for 2001,” National Vital Statistics Report, Vol. 51, No. 2, December 18, 2002.

**FIGURE 4 TEEN BIRTH RATES: U.S. AND ALASKA, 1992-2001**



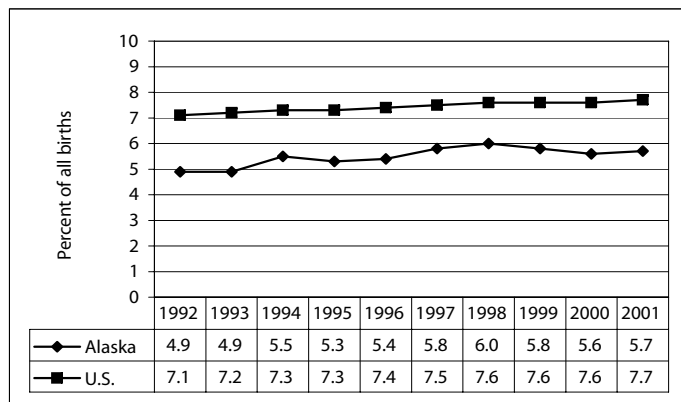
The 2001 teen (ages 15-19) birth rate for Alaska was 42.7, which is 5.7 percent below the 2001 U.S. teen birth rate of 45.3 (Figure 4). Alaska's 2001 teen birth rate reflects a decrease of 13.6 percent from the 2000 rate of 49.4. Since 1992, the teen birth rate in Alaska has declined by over one-third (37.2 percent).

**FIGURE 6 PERCENTAGE OF UNWED MOTHERS: U.S. AND ALASKA, 1992-2001**



Low birth weight [live births that weigh less than 2,500 grams (5 pounds, 8 ounces)] is an important predictor of infant death. Infants born with low birth weight also are more likely to need extensive medical treatment. The incidence of low birth weight (Figure 5) babies born in Alaska during 2001 was 5.7 percent of total live births, an increase of 1.8 percent from the 2000 Alaska rate of 5.6 percent. Although the incidence of low birth weight births has been increasing for both Alaska and the U.S. over the last decade, the Alaska low birth weight rate is 26.0 percent lower than the U.S. rate.

**FIGURE 5 PERCENTAGE OF LOW BIRTH WEIGHT INFANTS: U.S. AND ALASKA, 1992-2001**



Of the total births to Alaska residents during 2001, 32.9 percent were to unmarried women (Figure 6). This is nearly identical to the percent reported for Alaska in 2000.

The most popular boy's name in 2001 was Jacob and the most popular girl's name was Madison. Figure 7 below shows the ten most popular boys' and girls' names for the years 1991, 1996, and 2001.

**FIGURE 7 MOST POPULAR BOYS' AND GIRLS' NAMES: ALASKA, 1991, 1996, AND 2001**

RANK	BOYS' NAMES			GIRLS' NAMES		
	1991	1996	2001	1991	1996	2001
1	Michael	Jacob	Jacob	Jessica	Ashley	Madison
2	Christopher	Michael	Michael	Ashley	Jessica	Hannah
3	James	John	Ethan	Amanda	Emily	Emily
4	Joshua	David	Tyler	Sarah	Samantha	Ashley
5	Matthew	James	Joseph	Samantha	Sarah	Abigail
6	John	Christopher	William	Brittany	Megan	Elizabeth
7	Daniel	Daniel	Dylan	Elizabeth	Madison	Emma
8	Ryan	Matthew	David	Stephanie	Hannah	Grace
9	Kyle	Tyler	Matthew	Jennifer	Amanda	Haley
10	Jacob	William	Joshua	Chelsea	Taylor	Victoria

**BIRTHS BY RESIDENCE AND RACE**

The following tables of this chapter show annual occurrences of live births to Alaska residents during 2001 and for the three-year period 1999 through 2001.

Annual rates and three-year rates for the state as a whole, its 27 census areas, and 12 Native Regional Corporations are shown by race and residence of the mother. Natality statistics on the mother's age, marital status, education, birth facility, prenatal care, cesarean delivery, pre-term births, and low birth weight are presented.

The table for the statewide totals (Table 1) provides birth statistics for the white, black, Native, and Asian/Pacific Islander races. However, due to the low number of reportable events for some census areas or boroughs, birth outcomes by census area (borough) and Native Regional Corporation are only shown for the two predominant races in Alaska: Native and white.

Also, unknown values are not reported in these tables. Thus, the percentages for certain categories such as mother's age group may not add up to the total number of births.

Since female population estimates are not available by race for individual census areas, fertility rates and teen birth rates cannot be calculated for these tables (Table 2 and Table 3). Furthermore, due to the way race information was collected in the Federal 2000 Census, population estimates by race that are comparable to previous population estimates do not exist. The Alaska Department of Labor has developed bridge estimates so that the Federal population estimates by race in 2000 and later years will be comparable to previous years. Currently, bridge estimates by census area by race are not available. When bridge estimates by census area by race are published, the online Annual Report will be updated. The following Web address is for the online Annual Report:

[www.hss.state.ak.us/dph/bvs/publications/default.htm](http://www.hss.state.ak.us/dph/bvs/publications/default.htm)

**TABLE 1** **SELECTED BIRTH STATISTICS REPORTED BY MOTHER'S RACE:**  
**ALASKA, 2001 AND 1999-2001**

	TOTAL				WHITE				NATIVE			
	2001 NUMBER	2001 RATE*	99-01 NUMBER	99-01 RATE*	2001 NUMBER	2001 RATE*	99-01 NUMBER	99-01 RATE*	2001 NUMBER	2001 RATE*	99-01 NUMBER	99-01 RATE*
<b>BIRTH RATES (1)</b>												
CRUDE BIRTH RATE	10,005	15.8	29,947	15.9	6,312	13.9	19,087	13.9	2,496	22.5	7,378	22.6
<b>TEEN BIRTH RATE</b>												
15-17	301	19.1	1,077	23.2	114		434		153		494	
18-19	755	84.4	2,264	89.3	365		1,165		296		824	
15-19	1,056	42.7	3,341	46.6	479	29.2	1,599	32.8	449	84.2	1,318	84.9
FERTILITY RATE	10,005	71.2	29,947	71.5	6,312	64.0	19,087	63.5	2,496	100.8	7,378	101.4

	TOTAL				WHITE				NATIVE			
	2001 NUMBER	2001 %	99-01 NUMBER	99-01 %	2001 NUMBER	2001 %	99-01 NUMBER	99-01 %	2001 NUMBER	2001 %	99-01 NUMBER	99-01 %
<b>BIRTHS</b>												
IN STATE	9,919	100.0	29,645	100.0	6,244	62.9	18,845	63.6	2,495	25.2	7,375	24.9
TO RESIDENTS	10,005	100.0	29,947	100.0	6,312	63.1	19,087	63.7	2,496	24.9	7,378	24.6
<b>FACILITY</b>												
HOSPITAL	9,461	94.6	28,184	94.1	5,851	92.7	17,579	92.1	2,466	98.8	7,257	98.4
BIRTHING CENTER	294	2.9	882	2.9	266	4.2	813	4.3	13	0.5	31	0.4
HOME	137	1.4	458	1.5	116	1.8	414	2.2	5	0.2	16	0.2
CLINIC	12	0.1	76	0.3	5	0.1	16	0.1	7	0.3	58	0.8
OUTSIDE ALASKA	101	1.0	347	1.2	74	1.2	265	1.4	5	0.2	16	0.2
<b>MOTHER CHARACTERISTICS</b>												
<b>AGE GROUP</b>												
<15	15	0.1	46	0.2	5	0.1	18	0.1	10	0.4	19	0.3
15-19	1,056	10.6	3,341	11.2	479	7.6	1,599	8.4	449	18.0	1,318	17.9
20-24	2,773	27.7	8,189	27.4	1,621	25.7	4,924	25.8	802	32.1	2,278	30.9
25-29	2,657	26.6	8,139	27.2	1,741	27.6	5,397	28.3	599	24.0	1,834	24.9
30-34	2,089	20.9	6,090	20.3	1,485	23.5	4,257	22.3	366	14.7	1,130	15.3
35-39	1,129	11.3	3,285	11.0	778	12.3	2,299	12.1	221	8.9	634	8.6
40-44	270	2.7	803	2.7	192	3.0	550	2.9	46	1.8	158	2.1
45+	14	0.1	44	0.1	9	0.1	34	0.2	3	0.1	7	0.1
REPORTED DRINKING	260	2.6	872	3.0	105	1.7	362	1.9	144	5.9	472	6.5
REPORTED SMOKING	1,725	17.4	5,333	18.0	812	13.0	2,581	13.6	807	32.7	2,455	33.6
UNWED	3,281	32.9	9,872	33.1	1,405	22.3	4,383	23.0	1,481	59.5	4,278	58.2
<b>EDUCATION</b>												
<12 YEARS	1,320	13.7	4,002	13.8	534	8.6	1,716	9.2	639	26.7	1,864	26.3
12 YEARS	4,340	44.9	12,724	43.8	2,481	40.2	7,305	39.0	1,386	57.9	4,003	56.5
12+ YEARS	4,005	41.4	12,325	42.4	3,162	51.2	9,720	51.9	369	15.4	1,224	17.3
<b>PRENATAL CARE</b>												
<b>TRIMESTER CARE BEGAN</b>												
1ST TRIMESTER	7,794	80.9	23,403	80.4	5,192	84.6	15,686	84.0	1,717	72.1	5,131	71.7
3RD TRIMESTER	379	3.9	1,216	4.2	174	2.8	555	3.0	160	6.7	522	7.3
NO PRENATAL CARE	48	0.5	136	0.5	18	0.3	60	0.3	25	1.1	59	0.8
<b>APNCU INDEX</b>												
ADEQUATE+	2,295	25.0	7,419	26.1	1,592	27.5	5,151	28.4	463	19.8	1,412	19.9
ADEQUATE	3,800	41.4	11,741	41.4	2,627	45.4	8,341	46.0	728	31.1	2,130	30.1
INTERMEDIATE	1,672	18.2	4,823	17.0	940	16.3	2,644	14.6	514	22.0	1,617	22.8
INADEQUATE	1,402	15.3	4,388	15.5	622	10.8	1,991	11.0	633	27.1	1,924	27.2
<b>KESSNER INDEX</b>												
ADEQUATE	6,328	68.8	19,528	68.7	4,414	76.2	13,788	76.0	1,196	51.0	3,568	50.3
INTERMEDIATE	2,440	26.5	7,536	26.5	1,188	20.5	3,746	20.6	964	41.1	2,946	41.5
INADEQUATE	427	4.6	1,352	4.8	192	3.3	615	3.4	185	7.9	581	8.2
<b>C-SECTION BIRTHS</b>	1,885	19.1	5,065	17.2	1,338	21.5	3,627	19.3	288	11.7	763	10.4
<b>PRE-TERM BIRTHS</b>	1,007	10.1	3,090	10.4	528	8.4	1,720	9.0	331	13.3	926	12.6
<b>LOW BIRTHWEIGHT</b>	564	5.7	1,695	5.7	322	5.1	962	5.1	145	5.9	431	5.9

Continued =>

Note: Unknown responses are excluded from the denominator when calculating percentages.

(1) Rate per 1,000 population.

\* Rates based on fewer than 10 occurrences are statistically unreliable and should be used with caution.

\*\* Data suppressed for confidentiality concerns if total births to residents, by race, is less than five observations.

**TABLE 1** **SELECTED BIRTH STATISTICS REPORTED BY MOTHER'S RACE:**  
**ALASKA, 2001 AND 1999-2001** (Continued)

	TOTAL				BLACK				ASIAN/PI			
	2001 NUMBER	2001 RATE*	99-01 NUMBER	99-01 RATE*	2001 NUMBER	2001 RATE*	99-01 NUMBER	99-01 RATE*	2001 NUMBER	2001 RATE*	99-01 NUMBER	99-01 RATE*
<b>BIRTH RATES (1)</b>												
CRUDE BIRTH RATE	10,005	15.8	29,947	15.9	439	16.8	1,330	16.8	634	15.4	1,724	16.1
TEEN BIRTH RATE												
15-17	301	19.1	1,077	23.2	18		78		14		53	
18-19	755	84.4	2,264	89.3	46		141		42		114	
15-19	1,056	42.7	3,341	46.6	64	59.4	219	69.3	56	29.0	167	38.6
FERTILITY RATE	10,005	71.2	29,947	71.5	439	72.9	1,330	71.7	634	57.1	1,724	64.0
	TOTAL				BLACK				ASIAN/PI			
	2001 NUMBER	2001 %	99-01 NUMBER	99-01 %	2001 NUMBER	2001 %	99-01 NUMBER	99-01 %	2001 NUMBER	2001 %	99-01 NUMBER	99-01 %
<b>BIRTHS</b>												
IN STATE	9,919	100.0	29,645	100.0	439	4.4	1,325	4.5	627	6.3	1,705	5.8
TO RESIDENTS	10,005	100.0	29,947	100.0	439	4.4	1,330	4.4	634	6.3	1,724	5.8
<b>FACILITY</b>												
HOSPITAL	9,461	94.6	28,184	94.1	432	98.4	1,302	97.9	603	95.1	1,661	96.3
BIRTHING CENTER	294	2.9	882	2.9	1	0.2	8	0.6	12	1.9	25	1.5
HOME	137	1.4	458	1.5	3	0.7	8	0.6	10	1.6	16	0.9
CLINIC	12	0.1	76	0.3	0	0.0	0	0.0	0	0.0	1	0.1
OUTSIDE ALASKA	101	1.0	347	1.2	3	0.7	12	0.9	9	1.4	21	1.2
<b>MOTHER CHARACTERISTICS</b>												
AGE GROUP												
<15	15	0.1	46	0.2	0	0.0	4	0.3	0	0.0	4	0.2
15-19	1,056	10.6	3,341	11.2	64	14.6	219	16.5	56	8.8	167	9.7
20-24	2,773	27.7	8,189	27.4	162	36.9	474	35.7	166	26.2	407	23.6
25-29	2,657	26.6	8,139	27.2	130	29.6	349	26.3	154	24.3	450	26.1
30-34	2,089	20.9	6,090	20.3	54	12.3	179	13.5	152	24.0	426	24.7
35-39	1,129	11.3	3,285	11.0	21	4.8	81	6.1	82	12.9	211	12.2
40-44	270	2.7	803	2.7	7	1.6	21	1.6	23	3.6	58	3.4
45+	14	0.1	44	0.1	1	0.2	2	0.2	1	0.2	1	0.1
REPORTED DRINKING	260	2.6	872	3.0	3	0.7	18	1.4	5	0.8	14	0.8
REPORTED SMOKING	1,725	17.4	5,333	18.0	41	9.4	121	9.1	48	7.7	112	6.6
UNWED	3,281	32.9	9,872	33.1	198	45.1	603	45.4	163	25.9	475	27.6
EDUCATION												
<12 YEARS	1,320	13.7	4,002	13.8	48	11.3	143	11.0	89	14.5	234	14.0
12 YEARS	4,340	44.9	12,724	43.8	208	48.8	612	47.1	245	40.0	691	41.4
12+ YEARS	4,005	41.4	12,325	42.4	170	39.9	544	41.9	278	45.4	746	44.6
<b>PRENATAL CARE</b>												
TRIMESTER CARE BEGAN												
1ST TRIMESTER	7,794	80.9	23,403	80.4	344	82.5	1,063	82.8	468	77.6	1,260	76.6
3RD TRIMESTER	379	3.9	1,216	4.2	11	2.6	33	2.6	30	5.0	89	5.4
NO PRENATAL CARE	48	0.5	136	0.5	3	0.8	9	0.7	1	0.2	6	0.4
APNCU INDEX												
ADEQUATE+	2,295	25.0	7,419	26.1	117	29.5	439	35.2	109	19.5	349	22.2
ADEQUATE	3,800	41.4	11,741	41.4	168	42.4	499	40.0	235	42.1	634	40.3
INTERMEDIATE	1,672	18.2	4,823	17.0	69	17.4	177	14.2	127	22.8	312	19.8
INADEQUATE	1,402	15.3	4,388	15.5	42	10.6	132	10.6	87	15.6	279	17.7
KESSNER INDEX												
ADEQUATE	6,328	68.8	19,528	68.7	297	74.6	940	75.3	363	64.6	1,019	64.4
INTERMEDIATE	2,440	26.5	7,536	26.5	87	21.9	267	21.4	168	29.9	469	29.6
INADEQUATE	427	4.6	1,352	4.8	14	3.5	42	3.4	31	5.5	95	6.0
<b>C-SECTION BIRTHS</b>	1,885	19.1	5,065	17.2	98	22.8	275	21.1	131	21.1	316	18.6
<b>PRE-TERM BIRTHS</b>	1,007	10.1	3,090	10.4	68	15.5	204	15.4	66	10.4	196	11.4
<b>LOW BIRTHWEIGHT</b>	564	5.7	1,695	5.7	48	11.0	145	10.9	40	6.3	124	7.2

Note: Unknown responses are excluded from the denominator when calculating percentages.

(1) Rate per 1,000 population.

\* Rates based on fewer than 10 occurrences are statistically unreliable and should be used with caution.

\*\* Data suppressed for confidentiality concerns if total births to residents, by race, is less than five observations.

**TABLE 2** **SELECTED BIRTH STATISTICS REPORTED BY MOTHER'S RACE:**  
**2001 AND 1999-2001**  
**ALEUTIANS EAST BOROUGH**

	TOTAL				WHITE				NATIVE			
	2001 NUMBER	2001 RATE*	99-01 NUMBER	99-01 RATE*	2001 NUMBER	2001 RATE*	99-01 NUMBER	99-01 RATE*	2001 NUMBER	2001 RATE*	99-01 NUMBER	99-01 RATE*
<b>BIRTH RATES (1)</b>												
CRUDE BIRTH RATE	15	5.7	60	8.0								
TEEN BIRTH RATE												
15-17	0	0.0	2	15.7 *								
18-19	2	117.6 *	4	57.1 *								
15-19	2	38.5 *	6	30.5 *								
FERTILITY RATE	15	30.4	60	42.8								

	TOTAL				WHITE				NATIVE			
	2001 NUMBER	2001 %	99-01 NUMBER	99-01 %	2001 NUMBER	2001 %	99-01 NUMBER	99-01 %	2001 NUMBER	2001 %	99-01 NUMBER	99-01 %
<b>BIRTHS</b>												
WITHIN AREA	1	100.0	1	100.0	0	0.0	0	0.0	1	100.0	1	100.0
TO RESIDENTS	15	100.0	60	100.0	2	13.3	11	18.3	12	80.0	46	76.7
<b>FACILITY</b>												
HOSPITAL	14	93.3	55	91.7	2	100.0	7	63.6	11	91.7	45	97.8
BIRTHING CENTER	0	0.0	0	0.0	0	0.0	0	0.0	0	0.0	0	0.0
HOME	0	0.0	0	0.0	0	0.0	0	0.0	0	0.0	0	0.0
OTHER	1	6.7	1	1.7	0	0.0	0	0.0	1	8.3	1	2.2
OUTSIDE ALASKA	0	0.0	4	6.7	0	0.0	4	36.4	0	0.0	0	0.0
<b>MOTHER CHARACTERISTICS</b>												
AGE GROUP												
<15	0	0.0	0	0.0	**	**	0	0.0	**	**	0	0.0
15-19	2	13.3	6	10.0	**	**	1	9.1	**	**	5	10.9
20-24	2	13.3	20	33.3	**	**	2	18.2	**	**	18	39.1
25-29	4	26.7	11	18.3	**	**	3	27.3	**	**	8	17.4
30-34	1	6.7	10	16.7	**	**	2	18.2	**	**	6	13.0
35-39	6	40.0	12	20.0	**	**	3	27.3	**	**	8	17.4
40-44	0	0.0	1	1.7	**	**	0	0.0	**	**	1	2.2
45+	0	0.0	0	0.0	**	**	0	0.0	**	**	0	0.0
REPORTED DRINKING	1	6.7	3	5.3	**	**	0	0.0	**	**	3	6.5
REPORTED SMOKING	4	26.7	20	33.9	**	**	0	0.0	**	**	20	43.5
UNWED	5	33.3	30	50.8	**	**	3	30.0	**	**	26	56.5
EDUCATION												
<12 YEARS	3	20.0	5	8.8	**	**	3	27.3	**	**	2	4.7
12 YEARS	10	66.7	35	61.4	**	**	2	18.2	**	**	32	74.4
12+ YEARS	2	13.3	17	29.8	**	**	6	54.5	**	**	9	20.9
<b>PRENATAL CARE</b>												
TRIMESTER CARE BEGAN												
1ST TRIMESTER	10	76.9	47	81.0	**	**	9	81.8	**	**	36	81.8
3RD TRIMESTER	1	7.7	2	3.4	**	**	0	0.0	**	**	2	4.5
NO PRENATAL CARE	2	14.3	2	3.4	**	**	0	0.0	**	**	2	4.3
APNCU INDEX												
ADEQUATE+	6	42.9	32	54.2	**	**	5	50.0	**	**	26	56.5
ADEQUATE	5	35.7	15	25.4	**	**	2	20.0	**	**	12	26.1
INTERMEDIATE	0	0.0	5	8.5	**	**	3	30.0	**	**	2	4.3
INADEQUATE	3	21.4	7	11.9	**	**	0	0.0	**	**	6	13.0
KESSNER INDEX												
ADEQUATE	10	71.4	44	74.6	**	**	7	70.0	**	**	36	78.3
INTERMEDIATE	1	7.1	11	18.6	**	**	3	30.0	**	**	6	13.0
INADEQUATE	3	21.4	4	6.8	**	**	0	0.0	**	**	4	8.7
<b>C-SECTION BIRTHS</b>	5	33.3	11	18.6	**	**	3	30.0	**	**	7	15.2
<b>PRE-TERM BIRTHS</b>	3	20.0	6	10.0	**	**	2	18.2	**	**	3	6.5
<b>LOW BIRTHWEIGHT</b>	1	6.7	1	1.7	**	**	0	0.0	**	**	0	0.0

Note: Unknown responses are excluded from the denominator when calculating percentages.  
 (1) Rate per 1,000 population.  
 \* Rates based on fewer than 10 occurrences are statistically unreliable and should be used with caution.  
 \*\* Data suppressed for confidentiality concerns if total births to residents, by race, is less than five observations.

**TABLE 2** **SELECTED BIRTH STATISTICS REPORTED BY MOTHER'S RACE:**  
**2001 AND 1999-2001**  
**ALEUTIANS WEST CENSUS AREA**

	TOTAL				WHITE				NATIVE			
	2001 NUMBER	2001 RATE*	99-01 NUMBER	99-01 RATE*	2001 NUMBER	2001 RATE*	99-01 NUMBER	99-01 RATE*	2001 NUMBER	2001 RATE*	99-01 NUMBER	99-01 RATE*
<b>BIRTH RATES (1)</b>												
CRUDE BIRTH RATE	45	8.5	117	7.3								
TEEN BIRTH RATE												
15-17	0	0.0	1	4.5 *								
18-19	2	54.1 *	5	31.1 *								
15-19	2	16.8 *	6	15.6 *								
FERTILITY RATE	45	43.9	117	37.3								

	TOTAL				WHITE				NATIVE			
	2001 NUMBER	2001 %	99-01 NUMBER	99-01 %	2001 NUMBER	2001 %	99-01 NUMBER	99-01 %	2001 NUMBER	2001 %	99-01 NUMBER	99-01 %
<b>BIRTHS</b>												
WITHIN AREA	1	100.0	4	100.0	1	100.0	3	75.0	0	0.0	0	0.0
TO RESIDENTS	45	100.0	117	100.0	21	46.7	54	46.2	17	37.8	43	36.8
<b>FACILITY</b>												
HOSPITAL	32	71.1	75	64.1	11	52.4	23	42.6	17	100.0	43	100.0
BIRTHING CENTER	1	2.2	4	3.4	1	4.8	4	7.4	0	0.0	0	0.0
HOME	0	0.0	0	0.0	0	0.0	0	0.0	0	0.0	0	0.0
OTHER	1	2.2	2	1.7	1	4.8	1	1.9	0	0.0	0	0.0
OUTSIDE ALASKA	11	24.4	36	30.8	8	38.1	26	48.1	0	0.0	0	0.0
<b>MOTHER CHARACTERISTICS</b>												
<b>AGE GROUP</b>												
<15	0	0.0	1	0.9	0	0.0	0	0.0	0	0.0	1	2.3
15-19	2	4.4	6	5.2	1	4.8	3	5.8	1	5.9	3	7.0
20-24	10	22.2	23	20.0	4	19.0	9	17.3	4	23.5	11	25.6
25-29	14	31.1	29	25.2	7	33.3	14	26.9	5	29.4	12	27.9
30-34	6	13.3	25	21.7	2	9.5	9	17.3	2	11.8	7	16.3
35-39	10	22.2	25	21.7	5	23.8	14	26.9	5	29.4	9	20.9
40-44	3	6.7	6	5.2	2	9.5	3	5.8	0	0.0	0	0.0
45+	0	0.0	0	0.0	0	0.0	0	0.0	0	0.0	0	0.0
REPORTED DRINKING	0	0.0	0	0.0	0	0.0	0	0.0	0	0.0	0	0.0
REPORTED SMOKING	11	26.8	26	23.9	1	5.3	4	8.0	10	58.8	21	48.8
UNWED	14	34.1	36	32.4	3	15.8	10	19.6	8	47.1	19	44.2
<b>EDUCATION</b>												
<12 YEARS	4	9.3	14	12.7	0	0.0	1	2.0	4	23.5	11	25.6
12 YEARS	21	48.8	52	47.3	12	57.1	24	48.0	8	47.1	21	48.8
12+ YEARS	18	41.9	44	40.0	9	42.9	25	50.0	5	29.4	11	25.6
<b>PRENATAL CARE</b>												
<b>TRIMESTER CARE BEGAN</b>												
1ST TRIMESTER	35	79.5	86	77.5	16	76.2	38	71.7	15	88.2	36	85.7
3RD TRIMESTER	5	11.4	10	9.0	3	14.3	7	13.2	1	5.9	1	2.4
NO PRENATAL CARE	0	0.0	0	0.0	0	0.0	0	0.0	0	0.0	0	0.0
<b>APNCU INDEX</b>												
ADEQUATE+	14	32.6	44	40.4	4	19.0	12	23.1	9	56.3	27	65.9
ADEQUATE	18	41.9	35	32.1	9	42.9	20	38.5	6	37.5	9	22.0
INTERMEDIATE	4	9.3	12	11.0	3	14.3	8	15.4	0	0.0	3	7.3
INADEQUATE	7	16.3	18	16.5	5	23.8	12	23.1	1	6.3	2	4.9
<b>KESSNER INDEX</b>												
ADEQUATE	32	74.4	75	68.2	14	66.7	32	60.4	14	87.5	33	80.5
INTERMEDIATE	6	14.0	25	22.7	4	19.0	14	26.4	1	6.3	7	17.1
INADEQUATE	5	11.6	10	9.1	3	14.3	7	13.2	1	6.3	1	2.4
<b>C-SECTION BIRTHS</b>	7	17.5	25	22.3	4	22.2	12	23.5	2	11.8	8	18.6
<b>PRE-TERM BIRTHS</b>	4	8.9	6	5.3	2	9.5	3	5.7	2	11.8	3	7.0
<b>LOW BIRTHWEIGHT</b>	2	4.4	2	1.7	0	0.0	0	0.0	2	11.8	2	4.7

Note: Unknown responses are excluded from the denominator when calculating percentages.

(1) Rate per 1,000 population.

\* Rates based on fewer than 10 occurrences are statistically unreliable and should be used with caution.

\*\* Data suppressed for confidentiality concerns if total births to residents, by race, is less than five observations.



**TABLE 2** **SELECTED BIRTH STATISTICS REPORTED BY MOTHER'S RACE:**  
**2001 AND 1999-2001**  
**MUNICIPALITY OF ANCHORAGE**

	TOTAL				WHITE				NATIVE			
	2001 NUMBER	2001 RATE*	99-01 NUMBER	99-01 RATE*	2001 NUMBER	2001 RATE*	99-01 NUMBER	99-01 RATE*	2001 NUMBER	2001 RATE*	99-01 NUMBER	99-01 RATE*
<b>BIRTH RATES (1)</b>												
CRUDE BIRTH RATE	4,170	15.8	12,557	16.0								
TEEN BIRTH RATE												
15-17	114	19.1	423	24.0								
18-19	291	77.3	905	84.1								
15-19	405	41.7	1,328	46.8								
FERTILITY RATE	4,170	68.0	12,557	68.6								
	2001 NUMBER	2001 %	99-01 NUMBER	99-01 %	2001 NUMBER	2001 %	99-01 NUMBER	99-01 %	2001 NUMBER	2001 %	99-01 NUMBER	99-01 %
<b>BIRTHS</b>												
WITHIN AREA	5,348	100.0	15,916	100.0	3,285	61.4	9,983	62.7	1,262	23.6	3,656	23.0
TO RESIDENTS	4,170	100.0	12,557	100.0	2,833	67.9	8,684	69.2	579	13.9	1,705	13.6
<b>FACILITY</b>												
HOSPITAL	4,025	96.5	12,069	96.1	2,708	95.6	8,248	95.0	577	99.7	1,695	99.4
BIRTHING CENTER	79	1.9	256	2.0	73	2.6	241	2.8	2	0.3	7	0.4
HOME	43	1.0	157	1.3	34	1.2	137	1.6	0	0.0	1	0.1
OTHER	0	0.0	3	0.0	0	0.0	3	0.0	0	0.0	0	0.0
OUTSIDE ALASKA	23	0.6	72	0.6	18	0.6	55	0.6	0	0.0	2	0.1
<b>MOTHER CHARACTERISTICS</b>												
<b>AGE GROUP</b>												
<15	5	0.1	19	0.2	2	0.1	8	0.1	3	0.5	3	0.2
15-19	405	9.7	1,328	10.6	217	7.7	724	8.3	91	15.7	303	17.8
20-24	1,117	26.8	3,302	26.3	693	24.5	2,123	24.5	205	35.4	570	33.4
25-29	1,107	26.6	3,438	27.4	776	27.4	2,449	28.2	134	23.1	425	24.9
30-34	931	22.3	2,707	21.6	697	24.6	2,044	23.5	92	15.9	242	14.2
35-39	485	11.6	1,400	11.2	355	12.5	1,067	12.3	45	7.8	123	7.2
40-44	111	2.7	340	2.7	86	3.0	250	2.9	8	1.4	38	2.2
45+	8	0.2	19	0.2	6	0.2	16	0.2	1	0.2	1	0.1
REPORTED DRINKING	96	2.3	333	2.7	49	1.8	182	2.1	38	6.6	126	7.5
REPORTED SMOKING	588	14.3	1,816	14.6	322	11.5	1,042	12.1	193	33.6	579	34.3
UNWED	1,276	30.7	3,922	31.3	637	22.5	2,040	23.5	358	62.2	1,030	60.8
<b>EDUCATION</b>												
<12 YEARS	513	12.5	1,558	12.7	235	8.4	738	8.6	171	30.1	519	31.5
12 YEARS	1,695	41.4	4,714	38.3	1,071	38.1	3,090	35.9	296	52.0	753	45.7
12+ YEARS	1,887	46.1	6,040	49.1	1,502	53.5	4,780	55.5	102	17.9	376	22.8
<b>PRENATAL CARE</b>												
<b>TRIMESTER CARE BEGAN</b>												
1ST TRIMESTER	3,504	86.5	10,520	85.9	2,464	88.7	7,533	88.1	463	82.5	1,348	80.9
3RD TRIMESTER	107	2.6	290	2.4	59	2.1	162	1.9	21	3.7	52	3.1
NO PRENATAL CARE	16	0.4	44	0.4	2	0.1	13	0.2	10	1.8	16	1.0
<b>APNCU INDEX</b>												
ADEQUATE+	1,024	27.3	3,560	30.3	725	28.5	2,582	31.7	153	27.5	403	24.3
ADEQUATE	1,799	47.9	5,584	47.6	1,264	49.7	4,066	49.9	236	42.4	701	42.3
INTERMEDIATE	593	15.8	1,554	13.2	382	15.0	971	11.9	84	15.1	294	17.8
INADEQUATE	339	9.0	1,044	8.9	172	6.8	533	6.5	83	14.9	258	15.6
<b>KESSNER INDEX</b>												
ADEQUATE	2,994	79.4	9,319	79.2	2,132	83.5	6,798	83.2	385	69.0	1,099	66.2
INTERMEDIATE	654	17.3	2,115	18.0	359	14.1	1,193	14.6	142	25.4	492	29.7
INADEQUATE	123	3.3	334	2.8	61	2.4	175	2.1	31	5.6	68	4.1
<b>C-SECTION BIRTHS</b>	889	21.7	2,300	18.6	648	23.3	1,682	19.7	75	13.0	183	10.8
<b>PRE-TERM BIRTHS</b>	399	9.6	1,320	10.5	236	8.3	821	9.5	61	10.5	195	11.5
<b>LOW BIRTHWEIGHT</b>	260	6.2	778	6.2	157	5.6	448	5.2	33	5.7	118	6.9

Note: Unknown responses are excluded from the denominator when calculating percentages.

(1) Rate per 1,000 population.

\* Rates based on fewer than 10 occurrences are statistically unreliable and should be used with caution.

\*\* Data suppressed for confidentiality concerns if total births to residents, by race, is less than five observations.

**TABLE 2 SELECTED BIRTH STATISTICS REPORTED BY MOTHER'S RACE:  
2001 AND 1999-2001  
BETHEL CENSUS AREA**

	TOTAL				WHITE				NATIVE			
	2001 NUMBER	2001 RATE*	99-01 NUMBER	99-01 RATE*	2001 NUMBER	2001 RATE*	99-01 NUMBER	99-01 RATE*	2001 NUMBER	2001 RATE*	99-01 NUMBER	99-01 RATE*
<b>BIRTH RATES (1)</b>												
CRUDE BIRTH RATE	456	28.1	1,311	27.1								
TEEN BIRTH RATE												
15-17	23	49.3	67	48.7								
18-19	47	180.1	118	162.8								
15-19	70	96.2	185	88.1								
FERTILITY RATE	456	137.0	1,311	131.6								

	TOTAL				WHITE				NATIVE			
	2001 NUMBER	2001 %	99-01 NUMBER	99-01 %	2001 NUMBER	2001 %	99-01 NUMBER	99-01 %	2001 NUMBER	2001 %	99-01 NUMBER	99-01 %
<b>BIRTHS</b>												
WITHIN AREA	406	100.0	1,179	100.0	11	2.7	25	2.1	391	96.3	1,147	97.3
TO RESIDENTS	456	100.0	1,311	100.0	31	6.8	80	6.1	422	92.5	1,225	93.4
<b>FACILITY</b>												
HOSPITAL	450	98.7	1,280	97.6	27	87.1	70	87.5	420	99.5	1,204	98.3
BIRTHING CENTER	1	0.2	2	0.2	1	3.2	2	2.5	0	0.0	0	0.0
HOME	1	0.2	3	0.2	1	3.2	2	2.5	0	0.0	1	0.1
OTHER	2	0.4	18	1.4	0	0.0	0	0.0	2	0.5	18	1.5
OUTSIDE ALASKA	2	0.4	8	0.6	2	6.5	6	7.5	0	0.0	2	0.2
<b>MOTHER CHARACTERISTICS</b>												
<b>AGE GROUP</b>												
<15	3	0.7	3	0.2	0	0.0	0	0.0	3	0.7	3	0.2
15-19	70	15.4	185	14.1	0	0.0	1	1.3	70	16.6	184	15.0
20-24	136	29.8	370	28.2	7	22.6	11	13.8	128	30.3	358	29.2
25-29	106	23.2	336	25.6	12	38.7	28	35.0	93	22.0	307	25.1
30-34	84	18.4	258	19.7	8	25.8	30	37.5	75	17.8	224	18.3
35-39	46	10.1	125	9.5	4	12.9	9	11.3	42	10.0	116	9.5
40-44	11	2.4	32	2.4	0	0.0	1	1.3	11	2.6	31	2.5
45+	0	0.0	2	0.2	0	0.0	0	0.0	0	0.0	2	0.2
REPORTED DRINKING	19	4.3	56	4.3	1	3.6	1	1.4	18	4.3	55	4.5
REPORTED SMOKING	74	16.4	248	19.1	3	10.0	6	7.6	71	17.0	242	19.9
UNWED	203	44.5	585	44.8	2	6.5	7	8.8	200	47.4	577	47.3
<b>EDUCATION</b>												
<12 YEARS	99	22.9	269	21.3	0	0.0	2	2.7	99	24.6	267	22.6
12 YEARS	273	63.0	812	64.4	11	39.3	22	29.3	261	64.9	788	66.8
12+ YEARS	61	14.1	179	14.2	17	60.7	51	68.0	42	10.4	124	10.5
<b>PRENATAL CARE</b>												
<b>TRIMESTER CARE BEGAN</b>												
1ST TRIMESTER	289	65.7	839	65.5	21	77.8	60	78.9	265	64.6	774	64.6
3RD TRIMESTER	35	8.0	139	10.9	4	14.8	9	11.8	31	7.6	130	10.8
NO PRENATAL CARE	5	1.1	8	0.6	1	3.8	1	1.4	4	1.0	7	0.6
<b>APNCU INDEX</b>												
ADEQUATE+	46	10.5	163	12.8	6	23.1	19	25.7	40	9.8	144	12.1
ADEQUATE	107	24.5	282	22.2	9	34.6	27	36.5	96	23.5	252	21.2
INTERMEDIATE	122	27.9	334	26.3	5	19.2	13	17.6	116	28.4	318	26.7
INADEQUATE	162	37.1	491	38.7	6	23.1	15	20.3	156	38.2	476	40.0
<b>KESSNER INDEX</b>												
ADEQUATE	151	34.4	448	35.2	17	65.4	49	66.2	132	32.2	395	33.1
INTERMEDIATE	248	56.5	678	53.3	4	15.4	15	20.3	243	59.3	661	55.4
INADEQUATE	40	9.1	147	11.5	5	19.2	10	13.5	35	8.5	137	11.5
<b>C-SECTION BIRTHS</b>	43	9.6	106	8.2	8	26.7	13	17.1	34	8.2	92	7.6
<b>PRE-TERM BIRTHS</b>	80	17.6	186	14.2	1	3.3	4	5.1	78	18.5	181	14.8
<b>LOW BIRTHWEIGHT</b>	25	5.5	69	5.3	0	0.0	1	1.3	25	6.0	68	5.6

Note: Unknown responses are excluded from the denominator when calculating percentages.

(1) Rate per 1,000 population.

\* Rates based on fewer than 10 occurrences are statistically unreliable and should be used with caution.

\*\* Data suppressed for confidentiality concerns if total births to residents, by race, is less than five observations.

**TABLE 2** **SELECTED BIRTH STATISTICS REPORTED BY MOTHER'S RACE:**  
**2001 AND 1999-2001**  
**BRISTOL BAY BOROUGH**

	TOTAL				WHITE				NATIVE			
	2001 NUMBER	2001 RATE*	99-01 NUMBER	99-01 RATE*	2001 NUMBER	2001 RATE*	99-01 NUMBER	99-01 RATE*	2001 NUMBER	2001 RATE*	99-01 NUMBER	99-01 RATE*
<b>BIRTH RATES (1)</b>												
CRUDE BIRTH RATE	16	13.6	52	14.1								
TEEN BIRTH RATE												
15-17	1	34.5 *	4	40.0 *								
18-19	2	111.1 *	3	61.2 *								
15-19	3	63.8 *	7	47.0 *								
FERTILITY RATE	16	66.4	52	67.2								
	TOTAL				WHITE				NATIVE			
	2001 NUMBER	2001 %	99-01 NUMBER	99-01 %	2001 NUMBER	2001 %	99-01 NUMBER	99-01 %	2001 NUMBER	2001 %	99-01 NUMBER	99-01 %
<b>BIRTHS</b>												
WITHIN AREA	0	0.0	1	100.0	0	0.0	1	100.0	0	0.0	0	0.0
TO RESIDENTS	16	100.0	52	100.0	12	75.0	38	73.1	4	25.0	14	26.9
<b>FACILITY</b>												
HOSPITAL	16	100.0	49	94.2	12	100.0	35	92.1	4	100.0	14	100.0
BIRTHING CENTER	0	0.0	1	1.9	0	0.0	1	2.6	0	0.0	0	0.0
HOME	0	0.0	0	0.0	0	0.0	0	0.0	0	0.0	0	0.0
OTHER	0	0.0	1	1.9	0	0.0	1	2.6	0	0.0	0	0.0
OUTSIDE ALASKA	0	0.0	1	1.9	0	0.0	1	2.6	0	0.0	0	0.0
<b>MOTHER CHARACTERISTICS</b>												
<b>AGE GROUP</b>												
<15	0	0.0	0	0.0	**	**	0	0.0	**	**	0	0.0
15-19	3	18.8	7	13.5	**	**	4	10.5	**	**	3	21.4
20-24	1	6.3	4	7.7	**	**	2	5.3	**	**	2	14.3
25-29	4	25.0	18	34.6	**	**	13	34.2	**	**	5	35.7
30-34	4	25.0	12	23.1	**	**	9	23.7	**	**	3	21.4
35-39	0	0.0	5	9.6	**	**	5	13.2	**	**	0	0.0
40-44	4	25.0	6	11.5	**	**	5	13.2	**	**	1	7.1
45+	0	0.0	0	0.0	**	**	0	0.0	**	**	0	0.0
REPORTED DRINKING	0	0.0	1	2.0	**	**	0	0.0	**	**	1	7.1
REPORTED SMOKING	4	25.0	13	25.5	**	**	5	13.5	**	**	8	57.1
UNWED	7	43.8	24	46.2	**	**	14	36.8	**	**	10	71.4
<b>EDUCATION</b>												
<12 YEARS	2	12.5	5	9.8	**	**	2	5.4	**	**	3	21.4
12 YEARS	5	31.3	21	41.2	**	**	16	43.2	**	**	5	35.7
12+ YEARS	9	56.3	25	49.0	**	**	19	51.4	**	**	6	42.9
<b>PRENATAL CARE</b>												
<b>TRIMESTER CARE BEGAN</b>												
1ST TRIMESTER	14	87.5	42	82.4	**	**	31	83.8	**	**	11	78.6
3RD TRIMESTER	2	12.5	4	7.8	**	**	2	5.4	**	**	2	14.3
NO PRENATAL CARE	0	0.0	0	0.0	**	**	0	0.0	**	**	0	0.0
<b>APNCU INDEX</b>												
ADEQUATE+	1	6.3	7	13.7	**	**	5	13.5	**	**	2	14.3
ADEQUATE	7	43.8	20	39.2	**	**	15	40.5	**	**	5	35.7
INTERMEDIATE	5	31.3	12	23.5	**	**	8	21.6	**	**	4	28.6
INADEQUATE	3	18.8	12	23.5	**	**	9	24.3	**	**	3	21.4
<b>KESSNER INDEX</b>												
ADEQUATE	12	75.0	33	64.7	**	**	25	67.6	**	**	8	57.1
INTERMEDIATE	2	12.5	14	27.5	**	**	10	27.0	**	**	4	28.6
INADEQUATE	2	12.5	4	7.8	**	**	2	5.4	**	**	2	14.3
<b>C-SECTION BIRTHS</b>	4	25.0	8	15.4	**	**	7	18.4	**	**	1	7.1
<b>PRE-TERM BIRTHS</b>	0	0.0	2	3.9	**	**	1	2.7	**	**	1	7.1
<b>LOW BIRTHWEIGHT</b>	0	0.0	0	0.0	**	**	0	0.0	**	**	0	0.0

Note: Unknown responses are excluded from the denominator when calculating percentages.  
 (1) Rate per 1,000 population.  
 \* Rates based on fewer than 10 occurrences are statistically unreliable and should be used with caution.  
 \*\* Data suppressed for confidentiality concerns if total births to residents, by race, is less than five observations.

**TABLE 2 SELECTED BIRTH STATISTICS REPORTED BY MOTHER'S RACE:  
2001 AND 1999-2001**

**DENALI BOROUGH**

	TOTAL				WHITE				NATIVE			
	2001 NUMBER	2001 RATE*	99-01 NUMBER	99-01 RATE*	2001 NUMBER	2001 RATE*	99-01 NUMBER	99-01 RATE*	2001 NUMBER	2001 RATE*	99-01 NUMBER	99-01 RATE*
<b>BIRTH RATES (1)</b>												
CRUDE BIRTH RATE	20	10.5	58	10.2								
TEEN BIRTH RATE												
15-17	0	0.0	1	6.2 *								
18-19	0	0.0	1	21.7 *								
15-19	0	0.0	2	9.7 *								
FERTILITY RATE	20	51.2	58	49.4								

	TOTAL				WHITE				NATIVE			
	2001 NUMBER	2001 %	99-01 NUMBER	99-01 %	2001 NUMBER	2001 %	99-01 NUMBER	99-01 %	2001 NUMBER	2001 %	99-01 NUMBER	99-01 %
<b>BIRTHS</b>												
WITHIN AREA	0	0.0	1	100.0	0	0.0	1	100.0	0	0.0	0	0.0
TO RESIDENTS	20	100.0	58	100.0	17	85.0	51	87.9	1	5.0	3	5.2
<b>FACILITY</b>												
HOSPITAL	18	90.0	50	86.2	15	88.2	43	84.3	1	100.0	3	100.0
BIRTHING CENTER	2	10.0	6	10.3	2	11.8	6	11.8	0	0.0	0	0.0
HOME	0	0.0	1	1.7	0	0.0	1	2.0	0	0.0	0	0.0
OTHER	0	0.0	0	0.0	0	0.0	0	0.0	0	0.0	0	0.0
OUTSIDE ALASKA	0	0.0	1	1.7	0	0.0	1	2.0	0	0.0	0	0.0
<b>MOTHER CHARACTERISTICS</b>												
<b>AGE GROUP</b>												
<15	0	0.0	0	0.0	**	**	**	**	**	**	**	**
15-19	0	0.0	2	3.4	**	**	**	**	**	**	**	**
20-24	6	30.0	13	22.4	**	**	**	**	**	**	**	**
25-29	6	30.0	18	31.0	**	**	**	**	**	**	**	**
30-34	6	30.0	15	25.9	**	**	**	**	**	**	**	**
35-39	1	5.0	6	10.3	**	**	**	**	**	**	**	**
40-44	1	5.0	4	6.9	**	**	**	**	**	**	**	**
45+	0	0.0	0	0.0	**	**	**	**	**	**	**	**
REPORTED DRINKING	0	0.0	1	1.7	**	**	**	**	**	**	**	**
REPORTED SMOKING	2	10.0	5	8.6	**	**	**	**	**	**	**	**
UNWED	4	20.0	16	27.6	**	**	**	**	**	**	**	**
<b>EDUCATION</b>												
<12 YEARS	1	5.0	6	10.5	**	**	**	**	**	**	**	**
12 YEARS	13	65.0	24	42.1	**	**	**	**	**	**	**	**
12+ YEARS	6	30.0	27	47.4	**	**	**	**	**	**	**	**
<b>PRENATAL CARE</b>												
<b>TRIMESTER CARE BEGAN</b>												
1ST TRIMESTER	14	70.0	43	76.8	**	**	**	**	**	**	**	**
3RD TRIMESTER	1	5.0	2	3.6	**	**	**	**	**	**	**	**
NO PRENATAL CARE	0	0.0	0	0.0	**	**	**	**	**	**	**	**
<b>APNCU INDEX</b>												
ADEQUATE+	1	5.0	3	5.4	**	**	**	**	**	**	**	**
ADEQUATE	4	20.0	15	26.8	**	**	**	**	**	**	**	**
INTERMEDIATE	10	50.0	25	44.6	**	**	**	**	**	**	**	**
INADEQUATE	5	25.0	13	23.2	**	**	**	**	**	**	**	**
<b>KESSNER INDEX</b>												
ADEQUATE	9	45.0	27	48.2	**	**	**	**	**	**	**	**
INTERMEDIATE	10	50.0	27	48.2	**	**	**	**	**	**	**	**
INADEQUATE	1	5.0	2	3.6	**	**	**	**	**	**	**	**
<b>C-SECTION BIRTHS</b>	0	0.0	11	19.3	**	**	**	**	**	**	**	**
<b>PRE-TERM BIRTHS</b>	0	0.0	4	7.0	**	**	**	**	**	**	**	**
<b>LOW BIRTHWEIGHT</b>	0	0.0	1	1.7	**	**	**	**	**	**	**	**

Note: Unknown responses are excluded from the denominator when calculating percentages.

(1) Rate per 1,000 population.

\* Rates based on fewer than 10 occurrences are statistically unreliable and should be used with caution.

\*\* Data suppressed for confidentiality concerns if total births to residents, by race, is less than five observations.

**TABLE 2 SELECTED BIRTH STATISTICS REPORTED BY MOTHER'S RACE:  
2001 AND 1999-2001**

**DILLINGHAM CENSUS AREA**

	TOTAL				WHITE				NATIVE			
	2001 NUMBER	2001 RATE*	99-01 NUMBER	99-01 RATE*	2001 NUMBER	2001 RATE*	99-01 NUMBER	99-01 RATE*	2001 NUMBER	2001 RATE*	99-01 NUMBER	99-01 RATE*
<b>BIRTH RATES (1)</b>												
CRUDE BIRTH RATE	93	18.9	279	19.1								
TEEN BIRTH RATE												
15-17	6	40.3 *	21	52.4								
18-19	7	120.7 *	24	142.0								
15-19	13	62.8	45	78.9								
FERTILITY RATE	93	94.7	279	95.3								
	TOTAL				WHITE				NATIVE			
	2001 NUMBER	2001 %	99-01 NUMBER	99-01 %	2001 NUMBER	2001 %	99-01 NUMBER	99-01 %	2001 NUMBER	2001 %	99-01 NUMBER	99-01 %
<b>BIRTHS</b>												
WITHIN AREA	50	100.0	172	100.0	3	6.0	11	6.4	47	94.0	159	92.4
TO RESIDENTS	93	100.0	279	100.0	18	19.4	45	16.1	75	80.6	231	82.8
<b>FACILITY</b>												
HOSPITAL	89	95.7	267	95.7	14	77.8	37	82.2	75	100.0	227	98.3
BIRTHING CENTER	0	0.0	0	0.0	0	0.0	0	0.0	0	0.0	0	0.0
HOME	0	0.0	1	0.4	0	0.0	1	2.2	0	0.0	0	0.0
OTHER	0	0.0	3	1.1	0	0.0	0	0.0	0	0.0	3	1.3
OUTSIDE ALASKA	4	4.3	8	2.9	4	22.2	7	15.6	0	0.0	1	0.4
<b>MOTHER CHARACTERISTICS</b>												
AGE GROUP												
<15	0	0.0	0	0.0	0	0.0	0	0.0	0	0.0	0	0.0
15-19	13	14.0	45	16.1	0	0.0	1	2.2	13	17.3	44	19.0
20-24	25	26.9	82	29.4	1	5.6	6	13.3	24	32.0	74	32.0
25-29	23	24.7	54	19.4	5	27.8	18	40.0	18	24.0	36	15.6
30-34	21	22.6	60	21.5	9	50.0	14	31.1	12	16.0	46	19.9
35-39	9	9.7	31	11.1	2	11.1	5	11.1	7	9.3	25	10.8
40-44	1	1.1	6	2.2	1	5.6	1	2.2	0	0.0	5	2.2
45+	1	1.1	1	0.4	0	0.0	0	0.0	1	1.3	1	0.4
REPORTED DRINKING	9	9.7	15	5.4	4	22.2	6	13.6	5	6.7	9	3.9
REPORTED SMOKING	47	50.5	106	38.1	3	16.7	7	15.9	44	58.7	99	42.9
UNWED	47	51.1	133	48.2	3	17.6	6	14.0	44	58.7	126	54.8
EDUCATION												
<12 YEARS	17	18.5	41	14.9	1	5.9	1	2.3	16	21.3	40	17.5
12 YEARS	52	56.5	163	59.3	4	23.5	14	32.6	48	64.0	149	65.1
12+ YEARS	23	25.0	71	25.8	12	70.6	28	65.1	11	14.7	40	17.5
<b>PRENATAL CARE</b>												
TRIMESTER CARE BEGAN												
1ST TRIMESTER	58	62.4	176	64.0	13	72.2	36	80.0	45	60.0	139	61.2
3RD TRIMESTER	17	18.3	44	16.0	2	11.1	5	11.1	15	20.0	37	16.3
NO PRENATAL CARE	0	0.0	3	1.1	0	0.0	0	0.0	0	0.0	3	1.3
APNCU INDEX												
ADEQUATE+	24	26.7	64	23.4	5	31.3	8	18.6	19	25.7	56	24.6
ADEQUATE	26	28.9	73	26.6	7	43.8	20	46.5	19	25.7	52	22.8
INTERMEDIATE	9	10.0	45	16.4	1	6.3	7	16.3	8	10.8	38	16.7
INADEQUATE	31	34.4	92	33.6	3	18.8	8	18.6	28	37.8	82	36.0
KESSNER INDEX												
ADEQUATE	47	51.6	133	48.4	10	62.5	28	65.1	37	49.3	104	45.4
INTERMEDIATE	27	29.7	95	34.5	4	25.0	10	23.3	23	30.7	85	37.1
INADEQUATE	17	18.7	47	17.1	2	12.5	5	11.6	15	20.0	40	17.5
<b>C-SECTION BIRTHS</b>	15	16.1	27	9.7	9	50.0	15	34.1	6	8.0	12	5.2
<b>PRE-TERM BIRTHS</b>	19	20.4	39	14.0	2	11.1	3	6.7	17	22.7	36	15.6
<b>LOW BIRTHWEIGHT</b>	10	10.8	23	8.3	2	11.1	4	8.9	8	10.7	19	8.3

Note: Unknown responses are excluded from the denominator when calculating percentages.

(1) Rate per 1,000 population.

\* Rates based on fewer than 10 occurrences are statistically unreliable and should be used with caution.

\*\* Data suppressed for confidentiality concerns if total births to residents, by race, is less than five observations.

**TABLE 2 SELECTED BIRTH STATISTICS REPORTED BY MOTHER'S RACE:  
2001 AND 1999-2001  
FAIRBANKS NORTH STAR BOROUGH**

	TOTAL				WHITE				NATIVE			
	2001 NUMBER	2001 RATE*	99-01 NUMBER	99-01 RATE*	2001 NUMBER	2001 RATE*	99-01 NUMBER	99-01 RATE*	2001 NUMBER	2001 RATE*	99-01 NUMBER	99-01 RATE*
<b>BIRTH RATES (1)</b>												
CRUDE BIRTH RATE	1,488	17.8	4,439	17.7								
TEEN BIRTH RATE												
15-17	25	13.8	119	22.2								
18-19	93	72.5	302	81.2								
15-19	118	38.1	421	46.4								
FERTILITY RATE	1,488	76.4	4,439	75.8								
	2001 NUMBER	2001 %	99-01 NUMBER	99-01 %	2001 NUMBER	2001 %	99-01 NUMBER	99-01 %	2001 NUMBER	2001 %	99-01 NUMBER	99-01 %
<b>BIRTHS</b>												
WITHIN AREA	1,633	100.0	4,941	100.0	1,217	74.5	3,598	72.8	205	12.6	703	14.2
TO RESIDENTS	1,488	100.0	4,439	100.0	1,123	75.5	3,331	75.0	152	10.2	479	10.8
<b>FACILITY</b>												
HOSPITAL	1,421	95.5	4,238	95.5	1,064	94.7	3,150	94.6	149	98.0	475	99.2
BIRTHING CENTER	45	3.0	128	2.9	42	3.7	118	3.5	1	0.7	2	0.4
HOME	14	0.9	44	1.0	12	1.1	42	1.3	0	0.0	0	0.0
OTHER	0	0.0	0	0.0	0	0.0	0	0.0	0	0.0	0	0.0
OUTSIDE ALASKA	8	0.5	29	0.7	5	0.4	21	0.6	2	1.3	2	0.4
<b>MOTHER CHARACTERISTICS</b>												
<b>AGE GROUP</b>												
<15	1	0.1	7	0.2	1	0.1	6	0.2	0	0.0	0	0.0
15-19	118	7.9	421	9.5	81	7.2	282	8.5	24	15.8	77	16.1
20-24	490	32.9	1,447	32.6	352	31.3	1,045	31.4	55	36.2	165	34.4
25-29	434	29.2	1,276	28.7	321	28.6	961	28.9	46	30.3	145	30.3
30-34	276	18.5	809	18.2	229	20.4	647	19.4	18	11.8	56	11.7
35-39	141	9.5	394	8.9	116	10.3	321	9.6	8	5.3	29	6.1
40-44	27	1.8	81	1.8	23	2.0	66	2.0	1	0.7	7	1.5
45+	1	0.1	4	0.1	0	0.0	3	0.1	0	0.0	0	0.0
REPORTED DRINKING	6	0.4	43	1.0	2	0.2	25	0.8	4	2.7	14	3.0
REPORTED SMOKING	175	11.8	558	12.6	116	10.3	388	11.7	41	27.2	125	26.2
UNWED	337	22.7	1,057	23.8	194	17.3	611	18.4	94	61.8	283	59.1
<b>EDUCATION</b>												
<12 YEARS	123	8.6	418	9.7	84	7.6	274	8.3	26	18.6	104	22.8
12 YEARS	635	44.4	1,927	44.8	476	43.0	1,424	43.4	78	55.7	213	46.6
12+ YEARS	671	47.0	1,959	45.5	548	49.5	1,586	48.3	36	25.7	140	30.6
<b>PRENATAL CARE</b>												
<b>TRIMESTER CARE BEGAN</b>												
1ST TRIMESTER	1,151	79.2	3,413	78.4	890	80.8	2,617	79.9	106	72.6	317	68.3
3RD TRIMESTER	60	4.1	213	4.9	44	4.0	149	4.5	9	6.2	40	8.6
NO PRENATAL CARE	2	0.1	6	0.1	2	0.2	5	0.2	0	0.0	0	0.0
<b>APNCU INDEX</b>												
ADEQUATE+	344	23.7	1,064	24.4	258	23.5	781	23.9	28	19.2	109	23.5
ADEQUATE	591	40.8	1,743	40.0	472	42.9	1,375	42.0	46	31.5	139	30.0
INTERMEDIATE	292	20.2	806	18.5	218	19.8	598	18.3	33	22.6	94	20.3
INADEQUATE	222	15.3	740	17.0	151	13.7	520	15.9	39	26.7	122	26.3
<b>KESSNER INDEX</b>												
ADEQUATE	971	66.9	2,891	66.4	761	69.1	2,239	68.3	77	52.7	241	51.9
INTERMEDIATE	418	28.8	1,245	28.6	294	26.7	883	27.0	60	41.1	183	39.4
INADEQUATE	62	4.3	219	5.0	46	4.2	154	4.7	9	6.2	40	8.6
<b>C-SECTION BIRTHS</b>	218	14.8	674	15.4	157	14.1	494	15.0	18	11.8	80	16.7
<b>PRE-TERM BIRTHS</b>	130	8.8	423	9.6	93	8.3	299	9.0	14	9.2	64	13.5
<b>LOW BIRTHWEIGHT</b>	72	4.9	253	5.7	54	4.8	171	5.1	5	3.3	40	8.4

Note: Unknown responses are excluded from the denominator when calculating percentages.

(1) Rate per 1,000 population.

\* Rates based on fewer than 10 occurrences are statistically unreliable and should be used with caution.

\*\* Data suppressed for confidentiality concerns if total births to residents, by race, is less than five observations.

**TABLE 2** **SELECTED BIRTH STATISTICS REPORTED BY MOTHER'S RACE:**  
**2001 AND 1999-2001**  
**HAINES BOROUGH**

	TOTAL				WHITE				NATIVE			
	2001 NUMBER	2001 RATE*	99-01 NUMBER	99-01 RATE*	2001 NUMBER	2001 RATE*	99-01 NUMBER	99-01 RATE*	2001 NUMBER	2001 RATE*	99-01 NUMBER	99-01 RATE*
<b>BIRTH RATES (1)</b>												
CRUDE BIRTH RATE	17	7.2	62	8.6								
TEEN BIRTH RATE												
15-17	0	0.0	1	4.8 *								
18-19	2	90.9 *	7	104.5 *								
15-19	2	22.5 *	8	29.2 *								
FERTILITY RATE	17	38.1	62	44.2								

	TOTAL				WHITE				NATIVE			
	2001 NUMBER	2001 %	99-01 NUMBER	99-01 %	2001 NUMBER	2001 %	99-01 NUMBER	99-01 %	2001 NUMBER	2001 %	99-01 NUMBER	99-01 %
<b>BIRTHS</b>												
WITHIN AREA	1	100.0	4	100.0	0	0.0	2	50.0	0	0.0	1	25.0
TO RESIDENTS	17	100.0	62	100.0	12	70.6	42	67.7	2	11.8	13	21.0
<b>FACILITY</b>												
HOSPITAL	11	64.7	38	61.3	9	75.0	27	64.3	2	100.0	11	84.6
BIRTHING CENTER	2	11.8	13	21.0	2	16.7	12	28.6	0	0.0	1	7.7
HOME	1	5.9	2	3.2	0	0.0	1	2.4	0	0.0	0	0.0
OTHER	0	0.0	2	3.2	0	0.0	1	2.4	0	0.0	1	7.7
OUTSIDE ALASKA	3	17.6	7	11.3	1	8.3	1	2.4	0	0.0	0	0.0
<b>MOTHER CHARACTERISTICS</b>												
AGE GROUP												
<15	0	0.0	0	0.0	**	**	0	0.0	**	**	0	0.0
15-19	2	11.8	8	12.9	**	**	4	9.5	**	**	4	30.8
20-24	3	17.6	15	24.2	**	**	9	21.4	**	**	6	46.2
25-29	3	17.6	10	16.1	**	**	6	14.3	**	**	2	15.4
30-34	4	23.5	13	21.0	**	**	11	26.2	**	**	0	0.0
35-39	4	23.5	14	22.6	**	**	11	26.2	**	**	1	7.7
40-44	1	5.9	2	3.2	**	**	1	2.4	**	**	0	0.0
45+	0	0.0	0	0.0	**	**	0	0.0	**	**	0	0.0
REPORTED DRINKING	1	6.7	2	3.7	**	**	1	2.4	**	**	1	8.3
REPORTED SMOKING	1	6.7	9	16.7	**	**	6	14.6	**	**	3	25.0
UNWED	3	20.0	21	37.5	**	**	13	31.0	**	**	8	61.5
EDUCATION												
<12 YEARS	2	15.4	6	11.3	**	**	2	5.0	**	**	4	30.8
12 YEARS	5	38.5	29	54.7	**	**	22	55.0	**	**	7	53.8
12+ YEARS	6	46.2	18	34.0	**	**	16	40.0	**	**	2	15.4
<b>PRENATAL CARE</b>												
TRIMESTER CARE BEGAN												
1ST TRIMESTER	8	72.7	37	72.5	**	**	28	71.8	**	**	9	75.0
3RD TRIMESTER	0	0.0	1	2.0	**	**	0	0.0	**	**	1	8.3
NO PRENATAL CARE	1	11.1	2	4.1	**	**	1	2.7	**	**	0	0.0
APNCU INDEX												
ADEQUATE+	5	55.6	16	32.7	**	**	13	35.1	**	**	3	27.3
ADEQUATE	1	11.1	13	26.5	**	**	12	32.4	**	**	1	9.1
INTERMEDIATE	1	11.1	12	24.5	**	**	7	18.9	**	**	5	45.5
INADEQUATE	2	22.2	8	16.3	**	**	5	13.5	**	**	2	18.2
KESSNER INDEX												
ADEQUATE	5	55.6	24	49.0	**	**	20	54.1	**	**	4	36.4
INTERMEDIATE	3	33.3	22	44.9	**	**	16	43.2	**	**	6	54.5
INADEQUATE	0	0.0	3	6.1	**	**	0	0.0	**	**	1	9.1
<b>C-SECTION BIRTHS</b>	4	26.7	15	27.3	**	**	15	35.7	**	**	0	0.0
<b>PRE-TERM BIRTHS</b>	0	0.0	4	7.4	**	**	4	9.8	**	**	0	0.0
<b>LOW BIRTHWEIGHT</b>	1	7.1	4	7.4	**	**	4	9.8	**	**	0	0.0

Note: Unknown responses are excluded from the denominator when calculating percentages.

(1) Rate per 1,000 population.

\* Rates based on fewer than 10 occurrences are statistically unreliable and should be used with caution.

\*\* Data suppressed for confidentiality concerns if total births to residents, by race, is less than five observations.

**TABLE 2 SELECTED BIRTH STATISTICS REPORTED BY MOTHER'S RACE:  
2001 AND 1999-2001  
JUNEAU BOROUGH**

	TOTAL				WHITE				NATIVE			
	2001 NUMBER	2001 RATE*	99-01 NUMBER	99-01 RATE*	2001 NUMBER	2001 RATE*	99-01 NUMBER	99-01 RATE*	2001 NUMBER	2001 RATE*	99-01 NUMBER	99-01 RATE*
<b>BIRTH RATES (1)</b>												
CRUDE BIRTH RATE	432	14.1	1,237	13.5								
TEEN BIRTH RATE												
15-17	6	8.2 *	35	15.8								
18-19	32	73.2	94	74.3								
15-19	38	32.6	129	37.1								
FERTILITY RATE	432	63.7	1,237	61.2								

	TOTAL				WHITE				NATIVE			
	2001 NUMBER	2001 %	99-01 NUMBER	99-01 %	2001 NUMBER	2001 %	99-01 NUMBER	99-01 %	2001 NUMBER	2001 %	99-01 NUMBER	99-01 %
<b>BIRTHS</b>												
WITHIN AREA	444	100.0	1,290	100.0	308	69.4	911	70.6	98	22.1	269	20.9
TO RESIDENTS	432	100.0	1,237	100.0	295	68.3	872	70.5	96	22.2	247	20.0
<b>FACILITY</b>												
HOSPITAL	360	83.3	1,052	85.0	242	82.0	721	82.7	86	89.6	228	92.3
BIRTHING CENTER	52	12.0	116	9.4	38	12.9	92	10.6	8	8.3	14	5.7
HOME	13	3.0	43	3.5	12	4.1	39	4.5	0	0.0	3	1.2
OTHER	0	0.0	0	0.0	0	0.0	0	0.0	0	0.0	0	0.0
OUTSIDE ALASKA	7	1.6	26	2.1	3	1.0	20	2.3	2	2.1	2	0.8
<b>MOTHER CHARACTERISTICS</b>												
<b>AGE GROUP</b>												
<15	0	0.0	0	0.0	0	0.0	0	0.0	0	0.0	0	0.0
15-19	38	8.8	129	10.4	13	4.4	63	7.2	23	24.0	55	22.3
20-24	89	20.6	272	22.0	53	18.0	186	21.4	29	30.2	67	27.1
25-29	116	26.9	334	27.0	86	29.3	239	27.4	19	19.8	65	26.3
30-34	103	23.9	283	22.9	78	26.5	218	25.0	12	12.5	30	12.1
35-39	74	17.2	184	14.9	57	19.4	142	16.3	11	11.5	23	9.3
40-44	11	2.6	32	2.6	7	2.4	21	2.4	2	2.1	7	2.8
45+	0	0.0	2	0.2	0	0.0	2	0.2	0	0.0	0	0.0
REPORTED DRINKING	13	3.1	34	2.9	8	2.8	23	2.8	4	4.3	8	3.3
REPORTED SMOKING	60	14.3	202	16.8	38	13.3	129	15.3	20	21.3	65	26.5
UNWED	133	30.9	387	31.4	63	21.4	196	22.6	60	62.5	161	65.2
<b>EDUCATION</b>												
<12 YEARS	45	12.4	126	11.2	13	5.4	47	5.9	28	32.2	69	29.9
12 YEARS	137	37.7	470	41.6	88	36.5	308	38.6	40	46.0	117	50.6
12+ YEARS	181	49.9	534	47.3	140	58.1	442	55.5	19	21.8	45	19.5
<b>PRENATAL CARE</b>												
<b>TRIMESTER CARE BEGAN</b>												
1ST TRIMESTER	337	92.1	1,035	89.5	244	93.8	751	91.0	65	85.5	188	83.6
3RD TRIMESTER	3	0.8	17	1.5	2	0.8	11	1.3	1	1.3	5	2.2
NO PRENATAL CARE	2	0.8	4	0.4	2	1.1	4	0.5	0	0.0	0	0.0
<b>APNCU INDEX</b>												
ADEQUATE+	104	39.8	302	29.0	76	40.9	235	31.3	19	35.8	42	21.5
ADEQUATE	114	43.7	410	39.4	84	45.2	312	41.6	23	43.4	62	31.8
INTERMEDIATE	31	11.9	238	22.9	21	11.3	150	20.0	5	9.4	60	30.8
INADEQUATE	12	4.6	91	8.7	5	2.7	53	7.1	6	11.3	31	15.9
<b>KESSNER INDEX</b>												
ADEQUATE	226	86.3	816	78.2	167	89.3	617	82.2	41	77.4	128	65.3
INTERMEDIATE	31	11.8	206	19.8	16	8.6	119	15.8	11	20.8	63	32.1
INADEQUATE	5	1.9	21	2.0	4	2.1	15	2.0	1	1.9	5	2.6
<b>C-SECTION BIRTHS</b>	126	29.6	341	27.8	88	30.3	248	28.7	26	27.1	56	22.8
<b>PRE-TERM BIRTHS</b>	27	6.5	93	7.6	10	3.5	49	5.7	13	14.4	26	10.8
<b>LOW BIRTHWEIGHT</b>	14	3.2	46	3.7	5	1.7	26	3.0	6	6.3	13	5.3

Note: Unknown responses are excluded from the denominator when calculating percentages.

(1) Rate per 1,000 population.

\* Rates based on fewer than 10 occurrences are statistically unreliable and should be used with caution.

\*\* Data suppressed for confidentiality concerns if total births to residents, by race, is less than five observations.



**TABLE 2** **SELECTED BIRTH STATISTICS REPORTED BY MOTHER'S RACE:**  
**2001 AND 1999-2001**  
**KENAI PENINSULA BOROUGH**

	TOTAL				WHITE				NATIVE			
	2001 NUMBER	2001 RATE*	99-01 NUMBER	99-01 RATE*	2001 NUMBER	2001 RATE*	99-01 NUMBER	99-01 RATE*	2001 NUMBER	2001 RATE*	99-01 NUMBER	99-01 RATE*
<b>BIRTH RATES (1)</b>												
CRUDE BIRTH RATE	634	12.6	1,896	12.7								
TEEN BIRTH RATE												
15-17	17	11.7	61	14.5								
18-19	53	78.4	153	81.2								
15-19	70	32.8	214	35.1								
FERTILITY RATE	634	62.0	1,896	62.2								
	2001 NUMBER	2001 %	99-01 NUMBER	99-01 %	2001 NUMBER	2001 %	99-01 NUMBER	99-01 %	2001 NUMBER	2001 %	99-01 NUMBER	99-01 %
<b>BIRTHS</b>												
WITHIN AREA	544	100.0	1,639	100.0	475	87.3	1,445	88.2	48	8.8	133	8.1
TO RESIDENTS	634	100.0	1,896	100.0	546	86.1	1,651	87.1	63	9.9	173	9.1
<b>FACILITY</b>												
HOSPITAL	583	92.0	1,759	92.8	497	91.0	1,519	92.0	62	98.4	170	98.3
BIRTHING CENTER	24	3.8	59	3.1	23	4.2	56	3.4	1	1.6	2	1.2
HOME	24	3.8	66	3.5	23	4.2	64	3.9	0	0.0	1	0.6
OTHER	0	0.0	1	0.1	0	0.0	1	0.1	0	0.0	0	0.0
OUTSIDE ALASKA	3	0.5	11	0.6	3	0.5	11	0.7	0	0.0	0	0.0
<b>MOTHER CHARACTERISTICS</b>												
<b>AGE GROUP</b>												
<15	0	0.0	1	0.1	0	0.0	1	0.1	0	0.0	0	0.0
15-19	70	11.0	214	11.3	63	11.5	181	11.0	6	9.5	26	15.0
20-24	179	28.2	521	27.5	154	28.2	454	27.5	21	33.3	51	29.5
25-29	171	27.0	516	27.2	144	26.4	447	27.1	18	28.6	46	26.6
30-34	138	21.8	367	19.4	118	21.6	318	19.3	12	19.0	31	17.9
35-39	58	9.1	213	11.2	52	9.5	193	11.7	4	6.3	14	8.1
40-44	17	2.7	60	3.2	15	2.7	54	3.3	1	1.6	4	2.3
45+	1	0.2	3	0.2	0	0.0	2	0.1	1	1.6	1	0.6
REPORTED DRINKING	10	1.6	43	2.3	8	1.5	33	2.0	2	3.2	9	5.2
REPORTED SMOKING	104	16.4	341	18.0	80	14.7	274	16.6	21	33.3	56	32.4
UNWED	163	25.7	511	27.0	136	24.9	417	25.3	24	38.1	73	42.2
<b>EDUCATION</b>												
<12 YEARS	76	12.2	249	13.5	68	12.6	219	13.6	7	11.3	26	15.4
12 YEARS	275	44.3	820	44.4	230	42.8	694	43.0	40	64.5	99	58.6
12+ YEARS	270	43.5	776	42.1	240	44.6	701	43.4	15	24.2	44	26.0
<b>PRENATAL CARE</b>												
<b>TRIMESTER CARE BEGAN</b>												
1ST TRIMESTER	505	81.8	1,489	81.0	435	81.9	1,298	81.2	50	82.0	135	80.4
3RD TRIMESTER	15	2.4	57	3.1	11	2.1	48	3.0	1	1.6	4	2.4
NO PRENATAL CARE	6	1.0	23	1.3	6	1.1	21	1.3	0	0.0	2	1.2
<b>APNCU INDEX</b>												
ADEQUATE+	149	24.5	449	24.6	135	25.8	398	25.0	9	14.8	39	22.9
ADEQUATE	262	43.1	823	45.0	223	42.6	714	44.9	30	49.2	76	44.7
INTERMEDIATE	110	18.1	288	15.8	91	17.4	246	15.5	14	23.0	31	18.2
INADEQUATE	87	14.3	268	14.7	74	14.1	232	14.6	8	13.1	24	14.1
<b>KESSNER INDEX</b>												
ADEQUATE	433	71.2	1,288	70.4	375	71.7	1,132	71.1	41	67.2	108	63.5
INTERMEDIATE	154	25.3	462	25.2	131	25.0	391	24.6	19	31.1	56	32.9
INADEQUATE	21	3.5	80	4.4	17	3.3	69	4.3	1	1.6	6	3.5
<b>C-SECTION BIRTHS</b>	132	21.0	348	18.5	109	20.1	302	18.4	17	27.0	33	19.2
<b>PRE-TERM BIRTHS</b>	56	8.9	184	9.7	49	9.0	160	9.7	5	7.9	16	9.2
<b>LOW BIRTHWEIGHT</b>	23	3.7	89	4.8	19	3.5	80	4.9	2	3.2	4	2.3

Note: Unknown responses are excluded from the denominator when calculating percentages.

(1) Rate per 1,000 population.

\* Rates based on fewer than 10 occurrences are statistically unreliable and should be used with caution.

\*\* Data suppressed for confidentiality concerns if total births to residents, by race, is less than five observations.

**TABLE 2 SELECTED BIRTH STATISTICS REPORTED BY MOTHER'S RACE:  
2001 AND 1999-2001**

**KETCHIKAN GATEWAY BOROUGH**

	TOTAL				WHITE				NATIVE			
	2001 NUMBER	2001 RATE*	99-01 NUMBER	99-01 RATE*	2001 NUMBER	2001 RATE*	99-01 NUMBER	99-01 RATE*	2001 NUMBER	2001 RATE*	99-01 NUMBER	99-01 RATE*
<b>BIRTH RATES (1)</b>												
CRUDE BIRTH RATE	163	11.8	549	13.1								
TEEN BIRTH RATE												
15-17	10	28.2	29	27.6								
18-19	16	85.6	48	88.7								
15-19	26	48.1	77	48.4								
FERTILITY RATE	163	55.4	549	61.6								
	2001 NUMBER	2001 %	99-01 NUMBER	99-01 %	2001 NUMBER	2001 %	99-01 NUMBER	99-01 %	2001 NUMBER	2001 %	99-01 NUMBER	99-01 %
<b>BIRTHS</b>												
WITHIN AREA	245	100.0	793	100.0	153	62.4	520	65.6	76	31.0	230	29.0
TO RESIDENTS	163	100.0	549	100.0	113	69.3	392	71.4	36	22.1	118	21.5
<b>FACILITY</b>												
HOSPITAL	157	96.3	518	94.4	108	95.6	367	93.6	36	100.0	116	98.3
BIRTHING CENTER	0	0.0	0	0.0	0	0.0	0	0.0	0	0.0	0	0.0
HOME	2	1.2	11	2.0	2	1.8	10	2.6	0	0.0	0	0.0
OTHER	0	0.0	0	0.0	0	0.0	0	0.0	0	0.0	0	0.0
OUTSIDE ALASKA	4	2.5	20	3.6	3	2.7	15	3.8	0	0.0	2	1.7
<b>MOTHER CHARACTERISTICS</b>												
<b>AGE GROUP</b>												
<15	0	0.0	0	0.0	0	0.0	0	0.0	0	0.0	0	0.0
15-19	26	16.0	77	14.0	13	11.5	41	10.5	9	25.0	29	24.6
20-24	34	20.9	134	24.4	22	19.5	89	22.7	9	25.0	36	30.5
25-29	41	25.2	146	26.6	29	25.7	108	27.6	7	19.4	26	22.0
30-34	42	25.8	126	23.0	33	29.2	97	24.7	7	19.4	20	16.9
35-39	14	8.6	52	9.5	11	9.7	44	11.2	3	8.3	6	5.1
40-44	6	3.7	13	2.4	5	4.4	12	3.1	1	2.8	1	0.8
45+	0	0.0	1	0.2	0	0.0	1	0.3	0	0.0	0	0.0
REPORTED DRINKING	4	2.5	19	3.6	2	1.9	12	3.2	2	5.6	6	5.2
REPORTED SMOKING	42	26.3	142	26.1	27	24.3	93	23.9	13	36.1	44	37.3
UNWED	64	39.3	199	36.2	35	31.0	117	29.8	25	69.4	68	57.6
<b>EDUCATION</b>												
<12 YEARS	28	17.8	87	16.5	13	11.6	45	11.8	10	29.4	33	29.7
12 YEARS	60	38.2	219	41.6	42	37.5	145	38.2	16	47.1	60	54.1
12+ YEARS	69	43.9	220	41.8	57	50.9	190	50.0	8	23.5	18	16.2
<b>PRENATAL CARE</b>												
<b>TRIMESTER CARE BEGAN</b>												
1ST TRIMESTER	133	88.7	444	87.4	100	93.5	333	90.0	24	77.4	84	81.6
3RD TRIMESTER	2	1.3	3	0.6	0	0.0	0	0.0	2	6.5	3	2.9
NO PRENATAL CARE	0	0.0	0	0.0	0	0.0	0	0.0	0	0.0	0	0.0
<b>APNCU INDEX</b>												
ADEQUATE+	57	39.0	168	33.7	40	37.7	121	32.9	13	46.4	36	37.1
ADEQUATE	68	46.6	249	49.9	51	48.1	191	51.9	11	39.3	41	42.3
INTERMEDIATE	13	8.9	48	9.6	11	10.4	39	10.6	0	0.0	6	6.2
INADEQUATE	8	5.5	34	6.8	4	3.8	17	4.6	4	14.3	14	14.4
<b>KESSNER INDEX</b>												
ADEQUATE	122	83.6	413	82.8	95	89.6	317	86.1	20	71.4	73	75.3
INTERMEDIATE	22	15.1	83	16.6	11	10.4	51	13.9	6	21.4	21	21.6
INADEQUATE	2	1.4	3	0.6	0	0.0	0	0.0	2	7.1	3	3.1
<b>C-SECTION BIRTHS</b>	32	19.8	89	16.2	21	18.8	65	16.6	8	22.2	16	13.6
<b>PRE-TERM BIRTHS</b>	11	6.7	53	9.8	6	5.3	35	9.0	4	11.1	13	11.2
<b>LOW BIRTHWEIGHT</b>	4	2.5	20	3.6	3	2.7	14	3.6	1	2.8	4	3.4

Note: Unknown responses are excluded from the denominator when calculating percentages.

(1) Rate per 1,000 population.

\* Rates based on fewer than 10 occurrences are statistically unreliable and should be used with caution.

\*\* Data suppressed for confidentiality concerns if total births to residents, by race, is less than five observations.

**TABLE 2 SELECTED BIRTH STATISTICS REPORTED BY MOTHER'S RACE:  
2001 AND 1999-2001**

**KODIAK ISLAND BOROUGH**

	TOTAL				WHITE				NATIVE			
	2001 NUMBER	2001 RATE*	99-01 NUMBER	99-01 RATE*	2001 NUMBER	2001 RATE*	99-01 NUMBER	99-01 RATE*	2001 NUMBER	2001 RATE*	99-01 NUMBER	99-01 RATE*
<b>BIRTH RATES (1)</b>												
CRUDE BIRTH RATE	214	15.1	700	16.6								
TEEN BIRTH RATE												
15-17	4	11.5 *	12	11.8								
18-19	4	23.1 *	39	81.6								
15-19	8	15.4 *	51	34.2								
FERTILITY RATE	214	69.6	700	77.3								
	TOTAL				WHITE				NATIVE			
	2001 NUMBER	2001 %	99-01 NUMBER	99-01 %	2001 NUMBER	2001 %	99-01 NUMBER	99-01 %	2001 NUMBER	2001 %	99-01 NUMBER	99-01 %
<b>BIRTHS</b>												
WITHIN AREA	198	100.0	644	100.0	111	56.1	364	56.5	38	19.2	108	16.8
TO RESIDENTS	214	100.0	700	100.0	123	57.5	396	56.6	39	18.2	128	18.3
<b>FACILITY</b>												
HOSPITAL	210	98.1	678	96.9	120	97.6	376	94.9	38	97.4	126	98.4
BIRTHING CENTER	0	0.0	1	0.1	0	0.0	1	0.3	0	0.0	0	0.0
HOME	4	1.9	18	2.6	3	2.4	17	4.3	1	2.6	1	0.8
OTHER	0	0.0	1	0.1	0	0.0	0	0.0	0	0.0	1	0.8
OUTSIDE ALASKA	0	0.0	2	0.3	0	0.0	2	0.5	0	0.0	0	0.0
<b>MOTHER CHARACTERISTICS</b>												
AGE GROUP												
<15	1	0.5	2	0.3	1	0.8	1	0.3	0	0.0	1	0.8
15-19	8	3.7	51	7.3	3	2.4	20	5.1	2	5.1	16	12.5
20-24	55	25.7	176	25.1	29	23.6	96	24.2	12	30.8	35	27.3
25-29	58	27.1	181	25.9	33	26.8	103	26.0	15	38.5	39	30.5
30-34	49	22.9	154	22.0	33	26.8	95	24.0	5	12.8	21	16.4
35-39	32	15.0	98	14.0	19	15.4	59	14.9	4	10.3	11	8.6
40-44	11	5.1	38	5.4	5	4.1	22	5.6	1	2.6	5	3.9
45+	0	0.0	0	0.0	0	0.0	0	0.0	0	0.0	0	0.0
REPORTED DRINKING	5	2.3	17	2.4	2	1.6	5	1.3	3	7.7	12	9.7
REPORTED SMOKING	31	14.5	102	14.7	15	12.2	47	11.9	15	38.5	49	39.5
UNWED	61	28.5	189	27.0	25	20.3	65	16.4	15	38.5	59	46.1
EDUCATION												
<12 YEARS	21	10.0	87	12.6	7	5.7	33	8.4	7	17.9	20	15.9
12 YEARS	81	38.4	281	40.6	36	29.5	133	33.8	23	59.0	66	52.4
12+ YEARS	109	51.7	324	46.8	79	64.8	228	57.9	9	23.1	40	31.7
<b>PRENATAL CARE</b>												
TRIMESTER CARE BEGAN												
1ST TRIMESTER	172	81.1	530	76.6	106	86.9	322	82.6	31	79.5	100	78.7
3RD TRIMESTER	6	2.8	35	5.1	4	3.3	16	4.1	1	2.6	6	4.7
NO PRENATAL CARE	0	0.0	3	0.4	0	0.0	3	0.8	0	0.0	0	0.0
APNCU INDEX												
ADEQUATE+	39	18.6	104	15.1	29	24.2	66	16.9	4	10.3	18	14.5
ADEQUATE	79	37.6	236	34.2	48	40.0	152	38.9	15	38.5	38	30.6
INTERMEDIATE	61	29.0	210	30.4	29	24.2	111	28.4	12	30.8	40	32.3
INADEQUATE	31	14.8	140	20.3	14	11.7	62	15.9	8	20.5	28	22.6
KESSNER INDEX												
ADEQUATE	130	61.9	405	58.7	87	72.5	264	67.5	23	59.0	72	58.1
INTERMEDIATE	74	35.2	247	35.8	29	24.2	108	27.6	15	38.5	46	37.1
INADEQUATE	6	2.9	38	5.5	4	3.3	19	4.9	1	2.6	6	4.8
<b>C-SECTION BIRTHS</b>	48	22.5	115	16.5	32	26.0	67	16.9	6	15.4	22	17.2
<b>PRE-TERM BIRTHS</b>	22	10.3	78	11.1	14	11.4	38	9.6	1	2.6	16	12.5
<b>LOW BIRTHWEIGHT</b>	16	7.5	51	7.3	12	9.8	26	6.6	0	0.0	6	4.7

Note: Unknown responses are excluded from the denominator when calculating percentages.

(1) Rate per 1,000 population.

\* Rates based on fewer than 10 occurrences are statistically unreliable and should be used with caution.

\*\* Data suppressed for confidentiality concerns if total births to residents, by race, is less than five observations.

**TABLE 2** **SELECTED BIRTH STATISTICS REPORTED BY MOTHER'S RACE:**  
**2001 AND 1999-2001**  
**LAKE AND PENINSULA BOROUGH**

	TOTAL				WHITE				NATIVE			
	2001 NUMBER	2001 RATE*	99-01 NUMBER	99-01 RATE*	2001 NUMBER	2001 RATE*	99-01 NUMBER	99-01 RATE*	2001 NUMBER	2001 RATE*	99-01 NUMBER	99-01 RATE*
<b>BIRTH RATES (1)</b>												
CRUDE BIRTH RATE	19	10.9	72	13.4								
TEEN BIRTH RATE												
15-17	2	35.7 *	6	35.7 *								
18-19	1	40.0 *	8	105.3 *								
15-19	3	37.0 *	14	57.4								
FERTILITY RATE	19	54.9	72	68.2								

	TOTAL				WHITE				NATIVE			
	2001 NUMBER	2001 %	99-01 NUMBER	99-01 %	2001 NUMBER	2001 %	99-01 NUMBER	99-01 %	2001 NUMBER	2001 %	99-01 NUMBER	99-01 %
<b>BIRTHS</b>												
WITHIN AREA	1	100.0	2	100.0	0	0.0	0	0.0	1	100.0	2	100.0
TO RESIDENTS	19	100.0	72	100.0	6	31.6	22	30.6	12	63.2	48	66.7
<b>FACILITY</b>												
HOSPITAL	15	78.9	64	88.9	3	50.0	16	72.7	11	91.7	46	95.8
BIRTHING CENTER	1	5.3	4	5.6	1	16.7	4	18.2	0	0.0	0	0.0
HOME	2	10.5	3	4.2	1	16.7	1	4.5	1	8.3	2	4.2
OTHER	0	0.0	0	0.0	0	0.0	0	0.0	0	0.0	0	0.0
OUTSIDE ALASKA	1	5.3	1	1.4	1	16.7	1	4.5	0	0.0	0	0.0
<b>MOTHER CHARACTERISTICS</b>												
<b>AGE GROUP</b>												
<15	0	0.0	0	0.0	0	0.0	0	0.0	0	0.0	0	0.0
15-19	3	15.8	14	19.4	0	0.0	0	0.0	3	25.0	14	29.2
20-24	7	36.8	23	31.9	0	0.0	4	18.2	6	50.0	17	35.4
25-29	4	21.1	18	25.0	1	16.7	7	31.8	3	25.0	11	22.9
30-34	3	15.8	9	12.5	3	50.0	6	27.3	0	0.0	3	6.3
35-39	1	5.3	7	9.7	1	16.7	4	18.2	0	0.0	3	6.3
40-44	1	5.3	1	1.4	1	16.7	1	4.5	0	0.0	0	0.0
45+	0	0.0	0	0.0	0	0.0	0	0.0	0	0.0	0	0.0
REPORTED DRINKING	2	11.1	8	11.4	0	0.0	2	9.5	2	16.7	6	12.8
REPORTED SMOKING	6	31.6	21	29.2	0	0.0	0	0.0	5	41.7	20	41.7
UNWED	9	47.4	34	47.2	0	0.0	0	0.0	8	66.7	33	68.8
<b>EDUCATION</b>												
<12 YEARS	6	31.6	18	25.4	0	0.0	1	4.5	5	41.7	16	34.0
12 YEARS	11	57.9	37	52.1	4	66.7	7	31.8	7	58.3	29	61.7
12+ YEARS	2	10.5	16	22.5	2	33.3	14	63.6	0	0.0	2	4.3
<b>PRENATAL CARE</b>												
<b>TRIMESTER CARE BEGAN</b>												
1ST TRIMESTER	14	73.7	55	77.5	5	83.3	17	77.3	8	66.7	37	78.7
3RD TRIMESTER	0	0.0	1	1.4	0	0.0	0	0.0	0	0.0	1	2.1
NO PRENATAL CARE	2	10.5	3	4.3	1	16.7	1	4.5	1	8.3	2	4.3
<b>APNCU INDEX</b>												
ADEQUATE+	7	36.8	26	37.1	1	16.7	8	36.4	5	41.7	17	37.0
ADEQUATE	2	10.5	14	20.0	1	16.7	3	13.6	1	8.3	11	23.9
INTERMEDIATE	4	21.1	16	22.9	2	33.3	7	31.8	2	16.7	9	19.6
INADEQUATE	6	31.6	14	20.0	2	33.3	4	18.2	4	33.3	9	19.6
<b>KESSNER INDEX</b>												
ADEQUATE	10	52.6	35	50.0	2	33.3	10	45.5	7	58.3	24	52.2
INTERMEDIATE	7	36.8	31	44.3	3	50.0	11	50.0	4	33.3	19	41.3
INADEQUATE	0	0.0	4	5.7	0	0.0	0	0.0	0	0.0	3	6.5
<b>C-SECTION BIRTHS</b>	0	0.0	2	2.8	0	0.0	0	0.0	0	0.0	2	4.2
<b>PRE-TERM BIRTHS</b>	1	5.3	8	11.1	0	0.0	3	13.6	1	8.3	5	10.4
<b>LOW BIRTHWEIGHT</b>	0	0.0	4	5.6	0	0.0	2	9.1	0	0.0	2	4.2

Note: Unknown responses are excluded from the denominator when calculating percentages.

(1) Rate per 1,000 population.

\* Rates based on fewer than 10 occurrences are statistically unreliable and should be used with caution.

\*\* Data suppressed for confidentiality concerns if total births to residents, by race, is less than five observations.

**TABLE 2 SELECTED BIRTH STATISTICS REPORTED BY MOTHER'S RACE:  
2001 AND 1999-2001**

**MATANUSKA-SUSITNA BOROUGH**

	TOTAL				WHITE				NATIVE			
	2001 NUMBER	2001 RATE*	99-01 NUMBER	99-01 RATE*	2001 NUMBER	2001 RATE*	99-01 NUMBER	99-01 RATE*	2001 NUMBER	2001 RATE*	99-01 NUMBER	99-01 RATE*
<b>BIRTH RATES (1)</b>												
CRUDE BIRTH RATE	820	13.2	2,375	13.4								
TEEN BIRTH RATE												
15-17	23	12.2	81	15.0								
18-19	56	62.6	159	69.0								
15-19	79	28.4	240	31.2								
FERTILITY RATE	820	60.6	2,375	61.3								

	TOTAL				WHITE				NATIVE			
	2001 NUMBER	2001 %	99-01 NUMBER	99-01 %	2001 NUMBER	2001 %	99-01 NUMBER	99-01 %	2001 NUMBER	2001 %	99-01 NUMBER	99-01 %
<b>BIRTHS</b>												
WITHIN AREA	551	100.0	1,590	100.0	501	90.9	1,477	92.9	30	5.4	63	4.0
TO RESIDENTS	820	100.0	2,375	100.0	724	88.3	2,122	89.3	70	8.5	180	7.6
<b>FACILITY</b>												
HOSPITAL	730	89.0	2,083	87.7	642	88.7	1,847	87.0	67	95.7	175	97.2
BIRTHING CENTER	70	8.5	233	9.8	66	9.1	221	10.4	1	1.4	2	1.1
HOME	15	1.8	48	2.0	13	1.8	45	2.1	1	1.4	2	1.1
OTHER	0	0.0	1	0.0	0	0.0	1	0.0	0	0.0	0	0.0
OUTSIDE ALASKA	5	0.6	10	0.4	3	0.4	8	0.4	1	1.4	1	0.6
<b>MOTHER CHARACTERISTICS</b>												
AGE GROUP												
<15	0	0.0	2	0.1	0	0.0	1	0.0	0	0.0	1	0.6
15-19	79	9.6	240	10.1	61	8.4	199	9.4	13	18.6	33	18.3
20-24	235	28.7	651	27.4	210	29.0	593	27.9	20	28.6	46	25.6
25-29	210	25.6	659	27.7	189	26.1	589	27.8	18	25.7	51	28.3
30-34	163	19.9	479	20.2	144	19.9	432	20.4	9	12.9	29	16.1
35-39	107	13.0	270	11.4	94	13.0	241	11.4	10	14.3	17	9.4
40-44	25	3.0	70	2.9	25	3.5	63	3.0	0	0.0	3	1.7
45+	1	0.1	4	0.2	1	0.1	4	0.2	0	0.0	0	0.0
REPORTED DRINKING	17	2.1	46	2.0	16	2.2	41	1.9	1	1.5	4	2.3
REPORTED SMOKING	169	20.8	472	20.0	150	20.8	413	19.6	16	23.5	49	27.8
UNWED	245	29.9	694	29.2	206	28.5	594	28.0	34	48.6	86	47.8
EDUCATION												
<12 YEARS	92	11.6	289	12.5	74	10.5	240	11.6	15	22.4	41	23.3
12 YEARS	372	46.8	1,034	44.7	327	46.3	929	44.8	35	52.2	86	48.9
12+ YEARS	331	41.6	988	42.8	305	43.2	906	43.7	17	25.4	49	27.8
<b>PRENATAL CARE</b>												
TRIMESTER CARE BEGAN												
1ST TRIMESTER	627	77.8	1,783	76.4	556	78.1	1,608	76.9	54	78.3	126	72.4
3RD TRIMESTER	30	3.7	111	4.8	24	3.4	95	4.5	3	4.3	9	5.2
NO PRENATAL CARE	0	0.0	3	0.1	0	0.0	1	0.0	0	0.0	2	1.1
APNCU INDEX												
ADEQUATE+	261	33.5	728	31.8	229	33.4	659	32.2	27	39.1	56	32.2
ADEQUATE	336	43.1	1,033	45.1	299	43.6	936	45.7	26	37.7	65	37.4
INTERMEDIATE	82	10.5	214	9.3	73	10.7	181	8.8	5	7.2	21	12.1
INADEQUATE	100	12.8	315	13.8	84	12.3	271	13.2	11	15.9	32	18.4
KESSNER INDEX												
ADEQUATE	576	73.9	1,638	71.5	508	74.2	1,483	72.4	52	75.4	112	64.4
INTERMEDIATE	173	22.2	538	23.5	153	22.3	468	22.9	14	20.3	51	29.3
INADEQUATE	30	3.9	114	5.0	24	3.5	96	4.7	3	4.3	11	6.3
<b>C-SECTION BIRTHS</b>	179	22.3	495	21.3	160	22.6	449	21.7	14	20.0	29	16.2
<b>PRE-TERM BIRTHS</b>	88	10.8	232	9.8	70	9.7	197	9.3	15	21.7	29	16.4
<b>LOW BIRTHWEIGHT</b>	52	6.4	143	6.0	40	5.5	119	5.6	11	15.9	22	12.3

Note: Unknown responses are excluded from the denominator when calculating percentages.

(1) Rate per 1,000 population.

\* Rates based on fewer than 10 occurrences are statistically unreliable and should be used with caution.

\*\* Data suppressed for confidentiality concerns if total births to residents, by race, is less than five observations.

**TABLE 2** **SELECTED BIRTH STATISTICS REPORTED BY MOTHER'S RACE:**  
**2001 AND 1999-2001**  
**NOME CENSUS AREA**

	TOTAL				WHITE				NATIVE			
	2001 NUMBER	2001 RATE*	99-01 NUMBER	99-01 RATE*	2001 NUMBER	2001 RATE*	99-01 NUMBER	99-01 RATE*	2001 NUMBER	2001 RATE*	99-01 NUMBER	99-01 RATE*
<b>BIRTH RATES (1)</b>												
CRUDE BIRTH RATE	234	25.1	641	23.0								
TEEN BIRTH RATE												
15-17	20	69.2	44	52.6								
18-19	17	138.2	62	180.2								
15-19	37	89.8	106	89.8								
FERTILITY RATE	234	123.2	641	114.3								

	TOTAL				WHITE				NATIVE			
	2001 NUMBER	2001 %	99-01 NUMBER	99-01 %	2001 NUMBER	2001 %	99-01 NUMBER	99-01 %	2001 NUMBER	2001 %	99-01 NUMBER	99-01 %
<b>BIRTHS</b>												
WITHIN AREA	119	100.0	323	100.0	3	2.5	13	4.0	116	97.5	307	95.0
TO RESIDENTS	234	100.0	641	100.0	27	11.5	77	12.0	207	88.5	556	86.7
<b>FACILITY</b>												
HOSPITAL	229	97.9	622	97.0	23	85.2	65	84.4	206	99.5	550	98.9
BIRTHING CENTER	1	0.4	3	0.5	1	3.7	2	2.6	0	0.0	1	0.2
HOME	0	0.0	3	0.5	0	0.0	2	2.6	0	0.0	1	0.2
OTHER	1	0.4	4	0.6	0	0.0	0	0.0	1	0.5	4	0.7
OUTSIDE ALASKA	3	1.3	9	1.4	3	11.1	8	10.4	0	0.0	0	0.0
<b>MOTHER CHARACTERISTICS</b>												
<b>AGE GROUP</b>												
<15	3	1.3	5	0.8	0	0.0	0	0.0	3	1.4	5	0.9
15-19	37	15.8	106	16.5	0	0.0	1	1.3	37	17.9	104	18.7
20-24	83	35.5	201	31.4	7	25.9	13	16.9	76	36.7	186	33.5
25-29	54	23.1	161	25.1	8	29.6	21	27.3	46	22.2	136	24.5
30-34	30	12.8	93	14.5	8	29.6	24	31.2	22	10.6	68	12.2
35-39	22	9.4	61	9.5	4	14.8	14	18.2	18	8.7	47	8.5
40-44	5	2.1	13	2.0	0	0.0	3	3.9	5	2.4	10	1.8
45+	0	0.0	1	0.2	0	0.0	1	1.3	0	0.0	0	0.0
REPORTED DRINKING	18	8.0	46	7.4	1	4.0	3	4.1	17	8.5	43	7.9
REPORTED SMOKING	109	48.0	299	47.6	4	15.4	9	12.0	105	52.2	289	53.0
UNWED	152	65.2	384	60.2	2	7.7	13	17.1	150	72.5	370	66.8
<b>EDUCATION</b>												
<12 YEARS	50	22.6	144	23.2	0	0.0	2	2.6	50	25.8	141	26.3
12 YEARS	133	60.2	368	59.4	8	29.6	17	22.4	125	64.4	346	64.6
12+ YEARS	38	17.2	108	17.4	19	70.4	57	75.0	19	9.8	49	9.1
<b>PRENATAL CARE</b>												
<b>TRIMESTER CARE BEGAN</b>												
1ST TRIMESTER	178	81.3	470	75.9	23	92.0	68	91.9	155	79.9	396	73.7
3RD TRIMESTER	10	4.6	50	8.1	1	4.0	2	2.7	9	4.6	47	8.8
NO PRENATAL CARE	6	2.7	11	1.8	0	0.0	0	0.0	6	3.0	11	2.0
<b>APNCU INDEX</b>												
ADEQUATE+	41	18.4	120	19.3	6	24.0	14	19.2	35	17.7	106	19.6
ADEQUATE	87	39.0	224	36.0	8	32.0	32	43.8	79	39.9	188	34.8
INTERMEDIATE	54	24.2	145	23.3	8	32.0	22	30.1	46	23.2	121	22.4
INADEQUATE	41	18.4	133	21.4	3	12.0	5	6.8	38	19.2	126	23.3
<b>KESSNER INDEX</b>												
ADEQUATE	136	61.0	365	58.6	18	72.0	55	75.3	118	59.6	307	56.6
INTERMEDIATE	71	31.8	197	31.6	6	24.0	16	21.9	65	32.8	177	32.7
INADEQUATE	16	7.2	61	9.8	1	4.0	2	2.7	15	7.6	58	10.7
<b>C-SECTION BIRTHS</b>	20	9.0	43	7.0	6	23.1	13	17.8	14	7.1	27	5.1
<b>PRE-TERM BIRTHS</b>	27	11.7	79	12.5	3	11.5	7	9.3	24	11.8	70	12.7
<b>LOW BIRTHWEIGHT</b>	14	6.3	30	4.8	3	11.1	5	6.5	11	5.6	23	4.2

Note: Unknown responses are excluded from the denominator when calculating percentages.

(1) Rate per 1,000 population.

\* Rates based on fewer than 10 occurrences are statistically unreliable and should be used with caution.

\*\* Data suppressed for confidentiality concerns if total births to residents, by race, is less than five observations.

**TABLE 2** **SELECTED BIRTH STATISTICS REPORTED BY MOTHER'S RACE:**  
**2001 AND 1999-2001**  
**NORTH SLOPE BOROUGH**

	TOTAL				WHITE				NATIVE			
	2001 NUMBER	2001 RATE*	99-01 NUMBER	99-01 RATE*	2001 NUMBER	2001 RATE*	99-01 NUMBER	99-01 RATE*	2001 NUMBER	2001 RATE*	99-01 NUMBER	99-01 RATE*
<b>BIRTH RATES (1)</b>												
CRUDE BIRTH RATE	160	22.0	460	20.8								
TEEN BIRTH RATE												
15-17	11	49.8	31	47.8								
18-19	20	168.1	48	136.4								
15-19	31	91.2	79	79.0								
FERTILITY RATE	160	102.5	460	98.0								
<b>BIRTHS</b>												
WITHIN AREA	38	100.0	128	100.0	2	5.3	5	3.9	31	81.6	106	82.8
TO RESIDENTS	160	100.0	460	100.0	16	10.0	40	8.7	131	81.9	377	82.0
<b>FACILITY</b>												
HOSPITAL	157	98.1	445	96.7	14	87.5	32	80.0	131	100.0	372	98.7
BIRTHING CENTER	0	0.0	0	0.0	0	0.0	0	0.0	0	0.0	0	0.0
HOME	0	0.0	1	0.2	0	0.0	1	2.5	0	0.0	0	0.0
OTHER	0	0.0	6	1.3	0	0.0	0	0.0	0	0.0	5	1.3
OUTSIDE ALASKA	3	1.9	8	1.7	2	12.5	7	17.5	0	0.0	0	0.0
<b>MOTHER CHARACTERISTICS</b>												
<b>AGE GROUP</b>												
<15	1	0.6	2	0.4	0	0.0	0	0.0	1	0.8	2	0.5
15-19	31	19.4	79	17.2	0	0.0	0	0.0	29	22.1	73	19.4
20-24	52	32.5	141	30.7	5	31.3	10	25.0	46	35.1	129	34.2
25-29	33	20.6	103	22.4	6	37.5	12	30.0	24	18.3	75	19.9
30-34	23	14.4	78	17.0	4	25.0	12	30.0	15	11.5	58	15.4
35-39	17	10.6	50	10.9	1	6.3	6	15.0	14	10.7	36	9.5
40-44	3	1.9	7	1.5	0	0.0	0	0.0	2	1.5	4	1.1
45+	0	0.0	0	0.0	0	0.0	0	0.0	0	0.0	0	0.0
REPORTED DRINKING	8	5.1	32	7.1	0	0.0	0	0.0	8	6.2	31	8.4
REPORTED SMOKING	64	40.5	190	41.9	1	6.3	3	7.7	63	48.5	182	48.8
UNWED	88	55.3	255	55.7	0	0.0	0	0.0	81	61.8	237	62.9
<b>EDUCATION</b>												
<12 YEARS	40	25.6	116	26.1	0	0.0	1	2.5	37	29.1	109	30.1
12 YEARS	82	52.6	246	55.4	6	37.5	15	37.5	72	56.7	216	59.7
12+ YEARS	34	21.8	82	18.5	10	62.5	24	60.0	18	14.2	37	10.2
<b>PRENATAL CARE</b>												
<b>TRIMESTER CARE BEGAN</b>												
1ST TRIMESTER	115	73.7	333	74.3	10	62.5	31	79.5	95	74.8	271	73.4
3RD TRIMESTER	11	7.1	37	8.3	1	6.3	2	5.1	8	6.3	31	8.4
NO PRENATAL CARE	1	0.6	4	0.9	0	0.0	0	0.0	1	0.8	4	1.1
<b>APNCU INDEX</b>												
ADEQUATE+	25	16.2	83	18.6	3	18.8	10	26.3	21	16.7	67	18.1
ADEQUATE	33	21.4	120	26.8	6	37.5	13	34.2	23	18.3	95	25.7
INTERMEDIATE	53	34.4	122	27.3	3	18.8	7	18.4	46	36.5	103	27.8
INADEQUATE	43	27.9	122	27.3	4	25.0	8	21.1	36	28.6	105	28.4
<b>KESSNER INDEX</b>												
ADEQUATE	66	42.6	219	48.8	8	50.0	25	64.1	51	40.5	173	46.8
INTERMEDIATE	77	49.7	189	42.1	7	43.8	12	30.8	66	52.4	162	43.8
INADEQUATE	12	7.7	41	9.1	1	6.3	2	5.1	9	7.1	35	9.5
<b>C-SECTION BIRTHS</b>	19	12.0	48	10.7	4	25.0	6	17.1	12	9.2	34	9.1
<b>PRE-TERM BIRTHS</b>	18	11.3	50	10.9	2	12.5	3	7.5	16	12.3	44	11.8
<b>LOW BIRTHWEIGHT</b>	10	6.3	25	5.5	1	6.3	2	5.0	9	6.9	20	5.3

Note: Unknown responses are excluded from the denominator when calculating percentages.

(1) Rate per 1,000 population.

\* Rates based on fewer than 10 occurrences are statistically unreliable and should be used with caution.

\*\* Data suppressed for confidentiality concerns if total births to residents, by race, is less than five observations.

**TABLE 2 SELECTED BIRTH STATISTICS REPORTED BY MOTHER'S RACE:  
2001 AND 1999-2001**

**NORTHWEST ARCTIC BOROUGH**

	TOTAL				WHITE				NATIVE			
	2001 NUMBER	2001 RATE*	99-01 NUMBER	99-01 RATE*	2001 NUMBER	2001 RATE*	99-01 NUMBER	99-01 RATE*	2001 NUMBER	2001 RATE*	99-01 NUMBER	99-01 RATE*
<b>BIRTH RATES (1)</b>												
CRUDE BIRTH RATE	160	22.1	497	23.3								
TEEN BIRTH RATE												
15-17	12	53.1	36	54.7								
18-19	23	196.6	65	203.8								
15-19	35	102.0	101	103.4								
FERTILITY RATE	160	108.3	497	115.7								

	TOTAL				WHITE				NATIVE			
	2001 NUMBER	2001 %	99-01 NUMBER	99-01 %	2001 NUMBER	2001 %	99-01 NUMBER	99-01 %	2001 NUMBER	2001 %	99-01 NUMBER	99-01 %
<b>BIRTHS</b>												
WITHIN AREA	93	100.0	299	100.0	4	4.3	8	2.7	89	95.7	291	97.3
TO RESIDENTS	160	100.0	497	100.0	9	5.6	30	6.0	149	93.1	465	93.6
<b>FACILITY</b>												
HOSPITAL	158	98.8	488	98.2	8	88.9	27	90.0	148	99.3	459	98.7
BIRTHING CENTER	0	0.0	0	0.0	0	0.0	0	0.0	0	0.0	0	0.0
HOME	1	0.6	2	0.4	0	0.0	0	0.0	1	0.7	2	0.4
OTHER	0	0.0	4	0.8	0	0.0	0	0.0	0	0.0	4	0.9
OUTSIDE ALASKA	1	0.6	3	0.6	1	11.1	3	10.0	0	0.0	0	0.0
<b>MOTHER CHARACTERISTICS</b>												
<b>AGE GROUP</b>												
<15	0	0.0	1	0.2	0	0.0	0	0.0	0	0.0	1	0.2
15-19	35	21.9	101	20.3	1	11.1	2	6.7	34	22.8	99	21.3
20-24	43	26.9	137	27.6	1	11.1	3	10.0	42	28.2	134	28.8
25-29	33	20.6	118	23.7	3	33.3	11	36.7	29	19.5	106	22.8
30-34	33	20.6	86	17.3	2	22.2	10	33.3	30	20.1	75	16.1
35-39	13	8.1	39	7.8	2	22.2	3	10.0	11	7.4	36	7.7
40-44	3	1.9	13	2.6	0	0.0	0	0.0	3	2.0	13	2.8
45+	0	0.0	2	0.4	0	0.0	1	3.3	0	0.0	1	0.2
REPORTED DRINKING	14	8.8	57	11.6	0	0.0	0	0.0	13	8.8	56	12.1
REPORTED SMOKING	76	47.8	246	49.9	2	22.2	2	6.9	74	50.0	244	52.8
UNWED	94	59.1	303	61.7	3	33.3	6	21.4	91	61.5	297	64.4
<b>EDUCATION</b>												
<12 YEARS	53	35.6	145	32.1	1	12.5	2	7.1	52	37.4	143	33.9
12 YEARS	81	54.4	256	56.6	2	25.0	4	14.3	79	56.8	252	59.7
12+ YEARS	15	10.1	51	11.3	5	62.5	22	78.6	8	5.8	27	6.4
<b>PRENATAL CARE</b>												
<b>TRIMESTER CARE BEGAN</b>												
1ST TRIMESTER	102	65.0	355	72.7	6	66.7	24	80.0	94	64.4	329	72.1
3RD TRIMESTER	10	6.4	28	5.7	0	0.0	1	3.3	10	6.8	27	5.9
NO PRENATAL CARE	1	0.6	4	0.8	0	0.0	0	0.0	1	0.7	4	0.9
<b>APNCU INDEX</b>												
ADEQUATE+	29	18.8	101	20.9	2	22.2	10	34.5	27	18.9	91	20.1
ADEQUATE	32	20.8	130	26.9	2	22.2	10	34.5	30	21.0	120	26.5
INTERMEDIATE	41	26.6	125	25.8	5	55.6	7	24.1	34	23.8	116	25.6
INADEQUATE	52	33.8	128	26.4	0	0.0	2	6.9	52	36.4	126	27.8
<b>KESSNER INDEX</b>												
ADEQUATE	61	39.6	235	48.5	4	44.4	20	69.0	56	39.2	214	47.1
INTERMEDIATE	82	53.2	218	44.9	5	55.6	8	27.6	76	53.1	209	46.0
INADEQUATE	11	7.1	32	6.6	0	0.0	1	3.4	11	7.7	31	6.8
<b>C-SECTION BIRTHS</b>	8	5.1	27	5.5	1	11.1	7	24.1	6	4.1	19	4.1
<b>PRE-TERM BIRTHS</b>	22	13.8	69	13.9	0	0.0	2	6.7	22	14.9	67	14.4
<b>LOW BIRTHWEIGHT</b>	8	5.0	31	6.3	0	0.0	2	6.7	8	5.4	29	6.3

Note: Unknown responses are excluded from the denominator when calculating percentages.

(1) Rate per 1,000 population.

\* Rates based on fewer than 10 occurrences are statistically unreliable and should be used with caution.

\*\* Data suppressed for confidentiality concerns if total births to residents, by race, is less than five observations.



**TABLE 2 SELECTED BIRTH STATISTICS REPORTED BY MOTHER'S RACE:  
2001 AND 1999-2001**

**PRINCE OF WALES-OUTER KETCHIKAN CENSUS AREA**

	TOTAL				WHITE				NATIVE			
	2001 NUMBER	2001 RATE*	99-01 NUMBER	99-01 RATE*	2001 NUMBER	2001 RATE*	99-01 NUMBER	99-01 RATE*	2001 NUMBER	2001 RATE*	99-01 NUMBER	99-01 RATE*
<b>BIRTH RATES (1)</b>												
CRUDE BIRTH RATE	76	13.0	242	13.0								
TEEN BIRTH RATE												
15-17	5	29.4 *	10	18.5								
18-19	14	222.2	27	135.7								
15-19	19	81.5	37	50.0								
FERTILITY RATE	76	65.1	242	64.6								
	TOTAL				WHITE				NATIVE			
	2001 NUMBER	2001 %	99-01 NUMBER	99-01 %	2001 NUMBER	2001 %	99-01 NUMBER	99-01 %	2001 NUMBER	2001 %	99-01 NUMBER	99-01 %
<b>BIRTHS</b>												
WITHIN AREA	1	100.0	9	100.0	0	0.0	5	55.6	1	100.0	4	44.4
TO RESIDENTS	76	100.0	242	100.0	30	39.5	109	45.0	43	56.6	127	52.5
<b>FACILITY</b>												
HOSPITAL	72	94.7	221	91.3	28	93.3	96	88.1	42	97.7	120	94.5
BIRTHING CENTER	0	0.0	0	0.0	0	0.0	0	0.0	0	0.0	0	0.0
HOME	0	0.0	7	2.9	0	0.0	7	6.4	0	0.0	0	0.0
OTHER	1	1.3	4	1.7	0	0.0	0	0.0	1	2.3	4	3.1
OUTSIDE ALASKA	3	3.9	10	4.1	2	6.7	6	5.5	0	0.0	3	2.4
<b>MOTHER CHARACTERISTICS</b>												
AGE GROUP												
<15	0	0.0	0	0.0	0	0.0	0	0.0	0	0.0	0	0.0
15-19	19	25.0	37	15.3	4	13.3	11	10.1	15	34.9	26	20.5
20-24	23	30.3	80	33.1	6	20.0	30	27.5	17	39.5	49	38.6
25-29	17	22.4	51	21.1	10	33.3	28	25.7	6	14.0	21	16.5
30-34	12	15.8	46	19.0	6	20.0	23	21.1	5	11.6	22	17.3
35-39	3	3.9	22	9.1	3	10.0	14	12.8	0	0.0	7	5.5
40-44	2	2.6	6	2.5	1	3.3	3	2.8	0	0.0	2	1.6
45+	0	0.0	0	0.0	0	0.0	0	0.0	0	0.0	0	0.0
REPORTED DRINKING	3	4.1	14	6.0	0	0.0	3	2.9	3	7.0	11	8.9
REPORTED SMOKING	15	20.0	59	24.6	5	16.7	23	21.3	10	23.8	36	28.6
UNWED	42	55.3	115	47.5	10	33.3	33	30.3	31	72.1	80	63.0
EDUCATION												
<12 YEARS	13	18.3	34	14.8	4	14.3	16	15.4	9	22.5	18	15.0
12 YEARS	38	53.5	122	53.0	15	53.6	45	43.3	22	55.0	74	61.7
12+ YEARS	20	28.2	74	32.2	9	32.1	43	41.3	9	22.5	28	23.3
<b>PRENATAL CARE</b>												
TRIMESTER CARE BEGAN												
1ST TRIMESTER	53	75.7	167	75.9	22	75.9	74	74.7	29	76.3	88	76.5
3RD TRIMESTER	4	5.7	6	2.7	1	3.4	2	2.0	3	7.9	4	3.5
NO PRENATAL CARE	0	0.0	3	1.4	0	0.0	3	3.0	0	0.0	0	0.0
APNCU INDEX												
ADEQUATE+	15	22.1	43	20.1	5	17.2	12	12.1	10	27.8	31	28.4
ADEQUATE	31	45.6	91	42.5	15	51.7	46	46.5	13	36.1	42	38.5
INTERMEDIATE	12	17.6	56	26.2	4	13.8	25	25.3	8	22.2	28	25.7
INADEQUATE	10	14.7	24	11.2	5	17.2	16	16.2	5	13.9	8	7.3
KESSNER INDEX												
ADEQUATE	44	64.7	128	59.8	18	62.1	56	56.6	25	69.4	70	64.2
INTERMEDIATE	20	29.4	77	36.0	10	34.5	38	38.4	8	22.2	35	32.1
INADEQUATE	4	5.9	9	4.2	1	3.4	5	5.1	3	8.3	4	3.7
<b>C-SECTION BIRTHS</b>	12	15.8	32	13.3	8	26.7	15	13.8	3	7.0	15	11.9
<b>PRE-TERM BIRTHS</b>	8	10.5	24	10.1	3	10.0	5	4.6	4	9.3	17	13.7
<b>LOW BIRTHWEIGHT</b>	4	5.3	14	5.8	2	6.7	7	6.4	1	2.3	5	3.9

Note: Unknown responses are excluded from the denominator when calculating percentages.

(1) Rate per 1,000 population.

\* Rates based on fewer than 10 occurrences are statistically unreliable and should be used with caution.

\*\* Data suppressed for confidentiality concerns if total births to residents, by race, is less than five observations.

**TABLE 2** **SELECTED BIRTH STATISTICS REPORTED BY MOTHER'S RACE:**  
**2001 AND 1999-2001**  
**SITKA BOROUGH**

	TOTAL				WHITE				NATIVE			
	2001 NUMBER	2001 RATE*	99-01 NUMBER	99-01 RATE*	2001 NUMBER	2001 RATE*	99-01 NUMBER	99-01 RATE*	2001 NUMBER	2001 RATE*	99-01 NUMBER	99-01 RATE*
<b>BIRTH RATES (1)</b>												
CRUDE BIRTH RATE	117	13.2	366	13.9								
TEEN BIRTH RATE												
15-17	2	9.0 *	4	6.5 *								
18-19	6	53.1 *	19	57.4								
15-19	8	23.8 *	23	24.2								
FERTILITY RATE	117	63.4	366	65.2								
	TOTAL				WHITE				NATIVE			
	2001 NUMBER	2001 %	99-01 NUMBER	99-01 %	2001 NUMBER	2001 %	99-01 NUMBER	99-01 %	2001 NUMBER	2001 %	99-01 NUMBER	99-01 %
<b>BIRTHS</b>												
WITHIN AREA	127	100.0	396	100.0	84	66.1	249	62.9	37	29.1	123	31.1
TO RESIDENTS	117	100.0	366	100.0	85	72.6	253	69.1	26	22.2	91	24.9
<b>FACILITY</b>												
HOSPITAL	114	97.4	342	93.4	82	96.5	230	90.9	26	100.0	91	100.0
BIRTHING CENTER	0	0.0	0	0.0	0	0.0	0	0.0	0	0.0	0	0.0
HOME	2	1.7	11	3.0	2	2.4	11	4.3	0	0.0	0	0.0
OTHER	0	0.0	0	0.0	0	0.0	0	0.0	0	0.0	0	0.0
OUTSIDE ALASKA	1	0.9	13	3.6	1	1.2	12	4.7	0	0.0	0	0.0
<b>MOTHER CHARACTERISTICS</b>												
<b>AGE GROUP</b>												
<15	0	0.0	0	0.0	0	0.0	0	0.0	0	0.0	0	0.0
15-19	8	6.8	23	6.3	5	5.9	12	4.7	3	11.5	9	9.9
20-24	23	19.7	81	22.1	11	12.9	43	17.0	8	30.8	29	31.9
25-29	37	31.6	113	30.9	26	30.6	83	32.8	11	42.3	27	29.7
30-34	29	24.8	85	23.2	27	31.8	67	26.5	2	7.7	15	16.5
35-39	18	15.4	57	15.6	15	17.6	43	17.0	1	3.8	10	11.0
40-44	2	1.7	7	1.9	1	1.2	5	2.0	1	3.8	1	1.1
45+	0	0.0	0	0.0	0	0.0	0	0.0	0	0.0	0	0.0
REPORTED DRINKING	4	3.4	8	2.3	3	3.6	5	2.1	1	3.8	3	3.3
REPORTED SMOKING	14	12.1	55	15.1	8	9.5	28	11.1	5	19.2	25	27.5
UNWED	41	35.3	118	32.3	22	26.2	64	25.4	17	65.4	51	56.0
<b>EDUCATION</b>												
<12 YEARS	9	7.8	34	9.6	4	4.8	16	6.6	4	15.4	16	17.8
12 YEARS	41	35.7	122	34.4	27	32.1	70	28.7	13	50.0	43	47.8
12+ YEARS	65	56.5	199	56.1	53	63.1	158	64.8	9	34.6	31	34.4
<b>PRENATAL CARE</b>												
<b>TRIMESTER CARE BEGAN</b>												
1ST TRIMESTER	89	77.4	290	81.9	65	78.3	203	83.9	19	73.1	70	77.8
3RD TRIMESTER	8	7.0	16	4.5	3	3.6	7	2.9	4	15.4	7	7.8
NO PRENATAL CARE	0	0.0	0	0.0	0	0.0	0	0.0	0	0.0	0	0.0
<b>APNCU INDEX</b>												
ADEQUATE+	32	27.8	103	29.1	19	22.9	59	24.4	11	42.3	41	45.6
ADEQUATE	43	37.4	134	37.9	34	41.0	101	41.7	8	30.8	26	28.9
INTERMEDIATE	14	12.2	61	17.2	11	13.3	48	19.8	1	3.8	6	6.7
INADEQUATE	26	22.6	56	15.8	19	22.9	34	14.0	6	23.1	17	18.9
<b>KESSNER INDEX</b>												
ADEQUATE	73	63.5	249	70.3	51	61.4	171	70.7	19	73.1	68	75.6
INTERMEDIATE	34	29.6	89	25.1	29	34.9	64	26.4	3	11.5	15	16.7
INADEQUATE	8	7.0	16	4.5	3	3.6	7	2.9	4	15.4	7	7.8
<b>C-SECTION BIRTHS</b>	25	21.7	93	25.6	18	21.4	69	27.5	4	16.0	18	20.0
<b>PRE-TERM BIRTHS</b>	9	7.8	25	6.9	8	9.5	17	6.9	0	0.0	6	6.6
<b>LOW BIRTHWEIGHT</b>	4	3.4	12	3.3	3	3.5	7	2.8	0	0.0	4	4.4

Note: Unknown responses are excluded from the denominator when calculating percentages.

(1) Rate per 1,000 population.

\* Rates based on fewer than 10 occurrences are statistically unreliable and should be used with caution.

\*\* Data suppressed for confidentiality concerns if total births to residents, by race, is less than five observations.

**TABLE 2** **SELECTED BIRTH STATISTICS REPORTED BY MOTHER'S RACE:**  
**2001 AND 1999-2001**  
**SKAGWAY-HOONAH-ANGOON CENSUS AREA**

	TOTAL				WHITE				NATIVE			
	2001 NUMBER	2001 RATE*	99-01 NUMBER	99-01 RATE*	2001 NUMBER	2001 RATE*	99-01 NUMBER	99-01 RATE*	2001 NUMBER	2001 RATE*	99-01 NUMBER	99-01 RATE*
<b>BIRTH RATES (1)</b>												
CRUDE BIRTH RATE	28	8.3	84	8.1								
TEEN BIRTH RATE												
15-17	0	0.0	1	3.6 *								
18-19	3	83.3 *	7	70.0 *								
15-19	3	25.2 *	8	21.3 *								
FERTILITY RATE	28	42.8	84	41.9								

	TOTAL				WHITE				NATIVE			
	2001 NUMBER	2001 %	99-01 NUMBER	99-01 %	2001 NUMBER	2001 %	99-01 NUMBER	99-01 %	2001 NUMBER	2001 %	99-01 NUMBER	99-01 %
<b>BIRTHS</b>												
WITHIN AREA	1	100.0	4	100.0	0	0.0	0	0.0	1	100.0	4	100.0
TO RESIDENTS	28	100.0	84	100.0	10	35.7	31	36.9	15	53.6	44	52.4
<b>FACILITY</b>												
HOSPITAL	23	82.1	58	69.0	8	80.0	17	54.8	15	100.0	41	93.2
BIRTHING CENTER	2	7.1	11	13.1	2	20.0	11	35.5	0	0.0	0	0.0
HOME	0	0.0	0	0.0	0	0.0	0	0.0	0	0.0	0	0.0
OTHER	0	0.0	3	3.6	0	0.0	0	0.0	0	0.0	3	6.8
OUTSIDE ALASKA	3	10.7	12	14.3	0	0.0	3	9.7	0	0.0	0	0.0
<b>MOTHER CHARACTERISTICS</b>												
AGE GROUP												
<15	0	0.0	1	1.2	0	0.0	0	0.0	0	0.0	1	2.3
15-19	3	10.7	8	9.5	1	10.0	3	9.7	2	13.3	5	11.4
20-24	9	32.1	24	28.6	2	20.0	8	25.8	7	46.7	16	36.4
25-29	9	32.1	28	33.3	5	50.0	12	38.7	3	20.0	11	25.0
30-34	3	10.7	7	8.3	0	0.0	2	6.5	1	6.7	3	6.8
35-39	4	14.3	13	15.5	2	20.0	5	16.1	2	13.3	7	15.9
40-44	0	0.0	3	3.6	0	0.0	1	3.2	0	0.0	1	2.3
45+	0	0.0	0	0.0	0	0.0	0	0.0	0	0.0	0	0.0
REPORTED DRINKING	2	8.0	6	8.5	2	20.0	2	7.4	0	0.0	4	9.1
REPORTED SMOKING	4	16.0	10	13.5	2	20.0	3	10.0	2	13.3	7	15.9
UNWED	14	56.0	33	44.0	4	40.0	9	29.0	10	66.7	24	54.5
EDUCATION												
<12 YEARS	7	29.2	17	23.6	2	20.0	4	13.3	5	35.7	13	31.0
12 YEARS	10	41.7	29	40.3	3	30.0	9	30.0	7	50.0	20	47.6
12+ YEARS	7	29.2	26	36.1	5	50.0	17	56.7	2	14.3	9	21.4
<b>PRENATAL CARE</b>												
TRIMESTER CARE BEGAN												
1ST TRIMESTER	14	77.8	53	80.3	7	87.5	24	82.8	7	70.0	29	78.4
3RD TRIMESTER	1	5.6	1	1.5	0	0.0	0	0.0	1	10.0	1	2.7
NO PRENATAL CARE	0	0.0	1	1.6	0	0.0	0	0.0	0	0.0	1	2.8
APNCU INDEX												
ADEQUATE+	1	6.7	6	9.7	0	0.0	2	7.7	1	11.1	4	11.1
ADEQUATE	6	40.0	22	35.5	4	66.7	16	61.5	2	22.2	6	16.7
INTERMEDIATE	5	33.3	25	40.3	2	33.3	7	26.9	3	33.3	18	50.0
INADEQUATE	3	20.0	9	14.5	0	0.0	1	3.8	3	33.3	8	22.2
KESSNER INDEX												
ADEQUATE	7	46.7	35	56.5	4	66.7	19	73.1	3	33.3	16	44.4
INTERMEDIATE	7	46.7	25	40.3	2	33.3	7	26.9	5	55.6	18	50.0
INADEQUATE	1	6.7	2	3.2	0	0.0	0	0.0	1	11.1	2	5.6
<b>C-SECTION BIRTHS</b>	8	32.0	16	21.3	3	30.0	6	19.4	5	33.3	10	22.7
<b>PRE-TERM BIRTHS</b>	2	8.7	7	9.6	1	11.1	3	10.0	1	7.1	4	9.3
<b>LOW BIRTHWEIGHT</b>	1	4.0	2	2.7	0	0.0	1	3.2	1	6.7	1	2.3

Note: Unknown responses are excluded from the denominator when calculating percentages.

(1) Rate per 1,000 population.

\* Rates based on fewer than 10 occurrences are statistically unreliable and should be used with caution.

\*\* Data suppressed for confidentiality concerns if total births to residents, by race, is less than five observations.

**TABLE 2 SELECTED BIRTH STATISTICS REPORTED BY MOTHER'S RACE:  
2001 AND 1999-2001**

**SOUTHEAST FAIRBANKS CENSUS AREA**

	TOTAL				WHITE				NATIVE			
	2001 NUMBER	2001 RATE*	99-01 NUMBER	99-01 RATE*	2001 NUMBER	2001 RATE*	99-01 NUMBER	99-01 RATE*	2001 NUMBER	2001 RATE*	99-01 NUMBER	99-01 RATE*
<b>BIRTH RATES (1)</b>												
CRUDE BIRTH RATE	95	16.0	278	15.1								
TEEN BIRTH RATE												
15-17	2	12.7 *	5	9.9 *								
18-19	7	83.3 *	15	60.7								
15-19	9	37.2 *	20	26.6								
FERTILITY RATE	95	84.4	278	76.3								

	TOTAL				WHITE				NATIVE			
	2001 NUMBER	2001 %	99-01 NUMBER	99-01 %	2001 NUMBER	2001 %	99-01 NUMBER	99-01 %	2001 NUMBER	2001 %	99-01 NUMBER	99-01 %
<b>BIRTHS</b>												
WITHIN AREA	13	100.0	33	100.0	12	92.3	31	93.9	1	7.7	1	3.0
TO RESIDENTS	95	100.0	278	100.0	77	81.1	221	79.5	16	16.8	41	14.7
<b>FACILITY</b>												
HOSPITAL	74	77.9	226	81.3	56	72.7	171	77.4	16	100.0	40	97.6
BIRTHING CENTER	5	5.3	17	6.1	5	6.5	16	7.2	0	0.0	1	2.4
HOME	9	9.5	23	8.3	9	11.7	22	10.0	0	0.0	0	0.0
OTHER	4	4.2	7	2.5	4	5.2	7	3.2	0	0.0	0	0.0
OUTSIDE ALASKA	3	3.2	5	1.8	3	3.9	5	2.3	0	0.0	0	0.0
<b>MOTHER CHARACTERISTICS</b>												
<b>AGE GROUP</b>												
<15	1	1.1	1	0.4	1	1.3	1	0.5	0	0.0	0	0.0
15-19	9	9.5	20	7.2	5	6.5	11	5.0	4	25.0	8	19.5
20-24	22	23.2	78	28.1	16	20.8	57	25.8	5	31.3	15	36.6
25-29	22	23.2	71	25.5	18	23.4	60	27.1	4	25.0	8	19.5
30-34	21	22.1	57	20.5	18	23.4	47	21.3	2	12.5	6	14.6
35-39	12	12.6	35	12.6	11	14.3	30	13.6	1	6.3	4	9.8
40-44	7	7.4	14	5.0	7	9.1	13	5.9	0	0.0	0	0.0
45+	1	1.1	2	0.7	1	1.3	2	0.9	0	0.0	0	0.0
REPORTED DRINKING	2	2.2	3	1.1	1	1.3	1	0.5	1	6.3	1	2.4
REPORTED SMOKING	18	19.1	43	15.5	13	17.1	27	12.3	5	31.3	15	36.6
UNWED	28	29.8	72	26.0	13	17.1	36	16.4	14	87.5	33	80.5
<b>EDUCATION</b>												
<12 YEARS	16	17.2	40	14.7	14	18.2	32	14.5	2	13.3	8	20.0
12 YEARS	47	50.5	136	49.8	36	46.8	103	46.8	10	66.7	28	70.0
12+ YEARS	30	32.3	97	35.5	27	35.1	85	38.6	3	20.0	4	10.0
<b>PRENATAL CARE</b>												
<b>TRIMESTER CARE BEGAN</b>												
1ST TRIMESTER	51	57.3	158	58.1	41	57.7	127	59.1	8	50.0	20	48.8
3RD TRIMESTER	13	14.6	30	11.0	9	12.7	22	10.2	4	25.0	8	19.5
NO PRENATAL CARE	1	1.1	1	0.4	1	1.4	1	0.5	0	0.0	0	0.0
<b>APNCU INDEX</b>												
ADEQUATE+	6	6.8	24	8.9	6	8.5	21	9.8	0	0.0	2	5.0
ADEQUATE	19	21.6	68	25.2	14	19.7	51	23.8	3	20.0	8	20.0
INTERMEDIATE	21	23.9	65	24.1	18	25.4	52	24.3	3	20.0	10	25.0
INADEQUATE	42	47.7	113	41.9	33	46.5	90	42.1	9	60.0	20	50.0
<b>KESSNER INDEX</b>												
ADEQUATE	23	26.1	88	32.6	16	22.5	68	31.8	5	33.3	13	32.5
INTERMEDIATE	51	58.0	151	55.9	45	63.4	123	57.5	6	40.0	19	47.5
INADEQUATE	14	15.9	31	11.5	10	14.1	23	10.7	4	26.7	8	20.0
<b>C-SECTION BIRTHS</b>	17	18.3	43	15.8	13	17.3	32	14.7	4	25.0	9	22.0
<b>PRE-TERM BIRTHS</b>	11	11.6	21	7.6	10	13.0	16	7.2	1	6.3	4	9.8
<b>LOW BIRTHWEIGHT</b>	5	5.3	12	4.3	5	6.5	10	4.5	0	0.0	1	2.4

Note: Unknown responses are excluded from the denominator when calculating percentages.

(1) Rate per 1,000 population.

\* Rates based on fewer than 10 occurrences are statistically unreliable and should be used with caution.

\*\* Data suppressed for confidentiality concerns if total births to residents, by race, is less than five observations.

**TABLE 2 SELECTED BIRTH STATISTICS REPORTED BY MOTHER'S RACE:  
2001 AND 1999-2001**

**VALDEZ-CORDOVA CENSUS AREA**

	TOTAL				WHITE				NATIVE			
	2001 NUMBER	2001 RATE*	99-01 NUMBER	99-01 RATE*	2001 NUMBER	2001 RATE*	99-01 NUMBER	99-01 RATE*	2001 NUMBER	2001 RATE*	99-01 NUMBER	99-01 RATE*
<b>BIRTH RATES (1)</b>												
CRUDE BIRTH RATE	156	15.4	402	13.1								
TEEN BIRTH RATE												
15-17	2	7.7 *	8	10.6 *								
18-19	15	122.0	39	99.0								
15-19	17	44.5	47	40.9								
FERTILITY RATE	156	75.3	402	63.6								

	TOTAL				WHITE				NATIVE			
	2001 NUMBER	2001 %	99-01 NUMBER	99-01 %	2001 NUMBER	2001 %	99-01 NUMBER	99-01 %	2001 NUMBER	2001 %	99-01 NUMBER	99-01 %
<b>BIRTHS</b>												
WITHIN AREA	56	100.0	137	100.0	45	80.4	110	80.3	6	10.7	16	11.7
TO RESIDENTS	156	100.0	402	100.0	102	65.4	275	68.4	41	26.3	97	24.1
<b>FACILITY</b>												
HOSPITAL	140	89.7	358	89.1	88	86.3	237	86.2	41	100.0	95	97.9
BIRTHING CENTER	7	4.5	16	4.0	7	6.9	14	5.1	0	0.0	1	1.0
HOME	5	3.2	12	3.0	4	3.9	11	4.0	0	0.0	0	0.0
OTHER	0	0.0	1	0.2	0	0.0	0	0.0	0	0.0	1	1.0
OUTSIDE ALASKA	4	2.6	15	3.7	3	2.9	13	4.7	0	0.0	0	0.0
<b>MOTHER CHARACTERISTICS</b>												
AGE GROUP												
<15	0	0.0	1	0.2	0	0.0	0	0.0	0	0.0	1	1.0
15-19	17	10.9	47	11.7	6	5.9	21	7.6	10	24.4	24	24.7
20-24	37	23.7	98	24.4	22	21.6	66	24.0	12	29.3	24	24.7
25-29	41	26.3	113	28.1	30	29.4	83	30.2	9	22.0	25	25.8
30-34	37	23.7	89	22.1	27	26.5	62	22.5	6	14.6	15	15.5
35-39	18	11.5	41	10.2	12	11.8	31	11.3	3	7.3	7	7.2
40-44	5	3.2	12	3.0	4	3.9	11	4.0	1	2.4	1	1.0
45+	1	0.6	1	0.2	1	1.0	1	0.4	0	0.0	0	0.0
REPORTED DRINKING	5	3.2	11	2.8	3	2.9	8	3.0	2	4.9	3	3.1
REPORTED SMOKING	24	15.6	72	18.2	11	10.8	37	13.6	11	27.5	32	33.7
UNWED	49	31.6	125	31.3	21	20.6	64	23.4	24	58.5	53	54.6
EDUCATION												
<12 YEARS	18	11.9	44	11.3	8	8.0	18	6.7	9	22.5	24	25.5
12 YEARS	60	39.7	151	38.9	36	36.0	96	35.7	20	50.0	43	45.7
12+ YEARS	73	48.3	193	49.7	56	56.0	155	57.6	11	27.5	27	28.7
<b>PRENATAL CARE</b>												
TRIMESTER CARE BEGAN												
1ST TRIMESTER	117	80.7	311	81.8	83	85.6	225	85.2	26	70.3	65	72.2
3RD TRIMESTER	1	0.7	8	2.1	1	1.0	5	1.9	0	0.0	2	2.2
NO PRENATAL CARE	2	1.4	5	1.3	2	2.0	4	1.5	0	0.0	1	1.1
APNCU INDEX												
ADEQUATE+	33	23.2	89	23.9	20	20.6	61	23.4	11	30.6	23	25.8
ADEQUATE	54	38.0	138	37.1	38	39.2	98	37.5	12	33.3	31	34.8
INTERMEDIATE	39	27.5	84	22.6	28	28.9	62	23.8	9	25.0	16	18.0
INADEQUATE	16	11.3	61	16.4	11	11.3	40	15.3	4	11.1	19	21.3
KESSNER INDEX												
ADEQUATE	92	64.3	234	62.6	65	66.3	172	65.6	22	61.1	49	55.1
INTERMEDIATE	48	33.6	127	34.0	30	30.6	81	30.9	14	38.9	37	41.6
INADEQUATE	3	2.1	13	3.5	3	3.1	9	3.4	0	0.0	3	3.4
<b>C-SECTION BIRTHS</b>	24	15.6	62	15.7	22	21.6	54	19.9	2	5.0	6	6.3
<b>PRE-TERM BIRTHS</b>	18	11.7	44	11.1	11	10.9	29	10.7	5	12.2	10	10.4
<b>LOW BIRTHWEIGHT</b>	16	10.4	31	7.8	14	13.9	26	9.5	1	2.4	2	2.1

Note: Unknown responses are excluded from the denominator when calculating percentages.

(1) Rate per 1,000 population.

\* Rates based on fewer than 10 occurrences are statistically unreliable and should be used with caution.

\*\* Data suppressed for confidentiality concerns if total births to residents, by race, is less than five observations.

**TABLE 2 SELECTED BIRTH STATISTICS REPORTED BY MOTHER'S RACE:  
2001 AND 1999-2001**

**WADE HAMPTON CENSUS AREA**

	TOTAL				WHITE				NATIVE			
	2001 NUMBER	2001 RATE*	99-01 NUMBER	99-01 RATE*	2001 NUMBER	2001 RATE*	99-01 NUMBER	99-01 RATE*	2001 NUMBER	2001 RATE*	99-01 NUMBER	99-01 RATE*
<b>BIRTH RATES (1)</b>												
CRUDE BIRTH RATE	221	30.5	642	30.1								
TEEN BIRTH RATE												
15-17	10	38.8	46	63.2								
18-19	33	268.3	69	230.8								
15-19	43	112.9	115	112.0								
FERTILITY RATE	221	156.0	642	154.8								

	TOTAL				WHITE				NATIVE			
	2001 NUMBER	2001 %	99-01 NUMBER	99-01 %	2001 NUMBER	2001 %	99-01 NUMBER	99-01 %	2001 NUMBER	2001 %	99-01 NUMBER	99-01 %
<b>BIRTHS</b>												
WITHIN AREA	8	100.0	19	100.0	0	0.0	0	0.0	8	100.0	19	100.0
TO RESIDENTS	221	100.0	642	100.0	5	2.3	9	1.4	214	96.8	631	98.3
<b>FACILITY</b>												
HOSPITAL	217	98.2	629	98.0	4	80.0	8	88.9	211	98.6	619	98.1
BIRTHING CENTER	0	0.0	0	0.0	0	0.0	0	0.0	0	0.0	0	0.0
HOME	1	0.5	1	0.2	0	0.0	0	0.0	1	0.5	1	0.2
OTHER	2	0.9	10	1.6	0	0.0	0	0.0	2	0.9	10	1.6
OUTSIDE ALASKA	1	0.5	2	0.3	1	20.0	1	11.1	0	0.0	1	0.2
<b>MOTHER CHARACTERISTICS</b>												
<b>AGE GROUP</b>												
<15	0	0.0	0	0.0	0	0.0	0	0.0	0	0.0	0	0.0
15-19	43	19.5	115	17.9	0	0.0	0	0.0	43	20.1	115	18.2
20-24	49	22.2	155	24.1	0	0.0	1	11.1	49	22.9	154	24.4
25-29	66	29.9	177	27.6	0	0.0	2	22.2	66	30.8	175	27.7
30-34	31	14.0	108	16.8	4	80.0	5	55.6	26	12.1	102	16.2
35-39	22	10.0	69	10.7	1	20.0	1	11.1	21	9.8	68	10.8
40-44	10	4.5	17	2.6	0	0.0	0	0.0	9	4.2	16	2.5
45+	0	0.0	1	0.2	0	0.0	0	0.0	0	0.0	1	0.2
REPORTED DRINKING	13	6.1	46	7.3	0	0.0	0	0.0	13	6.3	46	7.4
REPORTED SMOKING	56	25.7	158	24.7	0	0.0	0	0.0	56	26.5	158	25.2
UNWED	135	61.4	375	58.6	0	0.0	0	0.0	135	63.4	375	59.6
<b>EDUCATION</b>												
<12 YEARS	63	29.7	170	27.3	0	0.0	0	0.0	63	30.7	170	27.8
12 YEARS	130	61.3	391	62.9	1	20.0	2	22.2	128	62.4	388	63.5
12+ YEARS	19	9.0	61	9.8	4	80.0	7	77.8	14	6.8	53	8.7
<b>PRENATAL CARE</b>												
<b>TRIMESTER CARE BEGAN</b>												
1ST TRIMESTER	111	51.9	361	57.3	4	80.0	7	77.8	105	50.7	352	56.9
3RD TRIMESTER	30	14.0	79	12.5	0	0.0	0	0.0	30	14.5	79	12.8
NO PRENATAL CARE	0	0.0	4	0.6	0	0.0	0	0.0	0	0.0	4	0.6
<b>APNCU INDEX</b>												
ADEQUATE+	7	3.3	28	4.5	1	20.0	1	11.1	6	2.9	27	4.4
ADEQUATE	24	11.4	87	13.9	1	20.0	2	22.2	23	11.3	85	13.8
INTERMEDIATE	67	31.9	201	32.2	1	20.0	1	11.1	66	32.4	200	32.6
INADEQUATE	112	53.3	308	49.4	2	40.0	5	55.6	109	53.4	302	49.2
<b>KESSNER INDEX</b>												
ADEQUATE	27	12.7	114	18.2	1	20.0	2	22.2	26	12.6	112	18.2
INTERMEDIATE	155	73.1	429	68.5	4	80.0	7	77.8	150	72.8	421	68.3
INADEQUATE	30	14.2	83	13.3	0	0.0	0	0.0	30	14.6	83	13.5
<b>C-SECTION BIRTHS</b>	17	7.7	44	6.9	2	40.0	2	22.2	14	6.5	41	6.5
<b>PRE-TERM BIRTHS</b>	38	17.2	86	13.4	1	20.0	1	11.1	37	17.3	85	13.5
<b>LOW BIRTHWEIGHT</b>	18	8.1	37	5.8	0	0.0	0	0.0	18	8.4	37	5.9

Note: Unknown responses are excluded from the denominator when calculating percentages.

(1) Rate per 1,000 population.

\* Rates based on fewer than 10 occurrences are statistically unreliable and should be used with caution.

\*\* Data suppressed for confidentiality concerns if total births to residents, by race, is less than five observations.

**TABLE 2 SELECTED BIRTH STATISTICS REPORTED BY MOTHER'S RACE:  
2001 AND 1999-2001**

**WRANGELL-PETERSBURG CENSUS AREA**

	TOTAL				WHITE				NATIVE			
	2001 NUMBER	2001 RATE*	99-01 NUMBER	99-01 RATE*	2001 NUMBER	2001 RATE*	99-01 NUMBER	99-01 RATE*	2001 NUMBER	2001 RATE*	99-01 NUMBER	99-01 RATE*
<b>BIRTH RATES (1)</b>												
CRUDE BIRTH RATE	76	11.5	235	11.5								
TEEN BIRTH RATE												
15-17	2	10.5 *	5	9.2 *								
18-19	3	41.7 *	12	62.5								
15-19	5	19.0 *	17	23.0								
FERTILITY RATE	76	60.2	235	59.2								

	TOTAL				WHITE				NATIVE			
	2001 NUMBER	2001 %	99-01 NUMBER	99-01 %	2001 NUMBER	2001 %	99-01 NUMBER	99-01 %	2001 NUMBER	2001 %	99-01 NUMBER	99-01 %
<b>BIRTHS</b>												
WITHIN AREA	37	100.0	108	100.0	28	75.7	76	70.4	6	16.2	27	25.0
TO RESIDENTS	76	100.0	235	100.0	55	72.4	162	68.9	17	22.4	61	26.0
<b>FACILITY</b>												
HOSPITAL	72	94.7	218	92.8	51	92.7	147	90.7	17	100.0	61	100.0
BIRTHING CENTER	0	0.0	2	0.9	0	0.0	2	1.2	0	0.0	0	0.0
HOME	0	0.0	0	0.0	0	0.0	0	0.0	0	0.0	0	0.0
OTHER	0	0.0	0	0.0	0	0.0	0	0.0	0	0.0	0	0.0
OUTSIDE ALASKA	4	5.3	15	6.4	4	7.3	13	8.0	0	0.0	0	0.0
<b>MOTHER CHARACTERISTICS</b>												
AGE GROUP												
<15	0	0.0	0	0.0	0	0.0	0	0.0	0	0.0	0	0.0
15-19	5	6.6	17	7.2	1	1.8	9	5.6	4	23.5	8	13.1
20-24	19	25.0	52	22.1	13	23.6	34	21.0	4	23.5	15	24.6
25-29	27	35.5	87	37.0	21	38.2	66	40.7	4	23.5	19	31.1
30-34	17	22.4	45	19.1	14	25.5	31	19.1	3	17.6	13	21.3
35-39	6	7.9	25	10.6	4	7.3	16	9.9	2	11.8	5	8.2
40-44	2	2.6	8	3.4	2	3.6	5	3.1	0	0.0	1	1.6
45+	0	0.0	1	0.4	0	0.0	1	0.6	0	0.0	0	0.0
REPORTED DRINKING	3	4.2	10	4.5	2	3.8	7	4.6	1	6.3	3	5.0
REPORTED SMOKING	9	12.0	39	16.9	6	10.9	20	12.4	3	18.8	17	28.3
UNWED	21	27.6	60	25.5	11	20.0	30	18.5	9	52.9	26	42.6
EDUCATION												
<12 YEARS	4	5.4	24	10.8	1	1.9	10	6.5	2	11.8	12	19.7
12 YEARS	27	36.5	90	40.4	16	30.2	58	37.9	11	64.7	31	50.8
12+ YEARS	43	58.1	109	48.9	36	67.9	85	55.6	4	23.5	18	29.5
<b>PRENATAL CARE</b>												
TRIMESTER CARE BEGAN												
1ST TRIMESTER	55	77.5	177	79.4	43	81.1	128	82.1	10	71.4	43	75.4
3RD TRIMESTER	2	2.8	6	2.7	2	3.8	4	2.6	0	0.0	2	3.5
NO PRENATAL CARE	0	0.0	0	0.0	0	0.0	0	0.0	0	0.0	0	0.0
APNCU INDEX												
ADEQUATE+	17	24.6	52	23.5	14	26.9	37	23.9	3	23.1	14	25.0
ADEQUATE	31	44.9	104	47.1	25	48.1	84	54.2	4	30.8	17	30.4
INTERMEDIATE	8	11.6	33	14.9	3	5.8	16	10.3	4	30.8	13	23.2
INADEQUATE	13	18.8	32	14.5	10	19.2	18	11.6	2	15.4	12	21.4
KESSNER INDEX												
ADEQUATE	45	65.2	153	69.2	35	67.3	112	72.3	8	61.5	36	64.3
INTERMEDIATE	22	31.9	62	28.1	15	28.8	39	25.2	5	38.5	18	32.1
INADEQUATE	2	2.9	6	2.7	2	3.8	4	2.6	0	0.0	2	3.6
<b>C-SECTION BIRTHS</b>	16	21.1	39	16.6	11	20.0	24	14.8	4	23.5	10	16.4
<b>PRE-TERM BIRTHS</b>	10	13.7	16	7.1	4	7.5	5	3.2	6	37.5	11	18.3
<b>LOW BIRTHWEIGHT</b>	2	2.7	4	1.7	1	1.9	3	1.9	1	5.9	1	1.6

Note: Unknown responses are excluded from the denominator when calculating percentages.

(1) Rate per 1,000 population.

\* Rates based on fewer than 10 occurrences are statistically unreliable and should be used with caution.

\*\* Data suppressed for confidentiality concerns if total births to residents, by race, is less than five observations.

**TABLE 2** **SELECTED BIRTH STATISTICS REPORTED BY MOTHER'S RACE:**  
**2001 AND 1999-2001**  
**YAKUTAT BOROUGH**

	TOTAL				WHITE				NATIVE			
	2001 NUMBER	2001 RATE*	99-01 NUMBER	99-01 RATE*	2001 NUMBER	2001 RATE*	99-01 NUMBER	99-01 RATE*	2001 NUMBER	2001 RATE*	99-01 NUMBER	99-01 RATE*
<b>BIRTH RATES (1)</b>												
CRUDE BIRTH RATE	8	11.4 *	23	10.3								
TEEN BIRTH RATE												
15-17	0	0.0	0	0.0								
18-19	0	0.0	1	52.6 *								
15-19	0	0.0	1	13.7 *								
FERTILITY RATE	8	59.7 *	23	56.0								

	TOTAL				WHITE				NATIVE			
	2001 NUMBER	2001 %	99-01 NUMBER	99-01 %	2001 NUMBER	2001 %	99-01 NUMBER	99-01 %	2001 NUMBER	2001 %	99-01 NUMBER	99-01 %
<b>BIRTHS</b>												
WITHIN AREA	0	0.0	0	0.0	0	0.0	0	0.0	0	0.0	0	0.0
TO RESIDENTS	8	100.0	23	100.0	0	0.0	8	34.8	7	87.5	12	52.2
<b>FACILITY</b>												
HOSPITAL	8	100.0	23	100.0	0	0.0	8	100.0	7	100.0	12	100.0
BIRTHING CENTER	0	0.0	0	0.0	0	0.0	0	0.0	0	0.0	0	0.0
HOME	0	0.0	0	0.0	0	0.0	0	0.0	0	0.0	0	0.0
OTHER	0	0.0	0	0.0	0	0.0	0	0.0	0	0.0	0	0.0
OUTSIDE ALASKA	0	0.0	0	0.0	0	0.0	0	0.0	0	0.0	0	0.0
<b>MOTHER CHARACTERISTICS</b>												
<b>AGE GROUP</b>												
<15	0	0.0	0	0.0	**	**	0	0.0	**	**	0	0.0
15-19	0	0.0	1	4.3	**	**	0	0.0	**	**	1	8.3
20-24	3	37.5	7	30.4	**	**	1	12.5	**	**	5	41.7
25-29	2	25.0	6	26.1	**	**	3	37.5	**	**	3	25.0
30-34	2	25.0	5	21.7	**	**	2	25.0	**	**	1	8.3
35-39	1	12.5	2	8.7	**	**	0	0.0	**	**	2	16.7
40-44	0	0.0	2	8.7	**	**	2	25.0	**	**	0	0.0
45+	0	0.0	0	0.0	**	**	0	0.0	**	**	0	0.0
REPORTED DRINKING	0	0.0	1	4.3	**	**	0	0.0	**	**	1	8.3
REPORTED SMOKING	2	25.0	8	34.8	**	**	3	37.5	**	**	4	33.3
UNWED	6	75.0	15	65.2	**	**	5	62.5	**	**	10	83.3
<b>EDUCATION</b>												
<12 YEARS	0	0.0	1	4.8	**	**	0	0.0	**	**	1	8.3
12 YEARS	3	37.5	7	33.3	**	**	2	33.3	**	**	4	33.3
12+ YEARS	5	62.5	13	61.9	**	**	4	66.7	**	**	7	58.3
<b>PRENATAL CARE</b>												
<b>TRIMESTER CARE BEGAN</b>												
1ST TRIMESTER	4	57.1	15	68.2	**	**	5	62.5	**	**	8	72.7
3RD TRIMESTER	0	0.0	1	4.5	**	**	1	12.5	**	**	0	0.0
NO PRENATAL CARE	0	0.0	0	0.0	**	**	0	0.0	**	**	0	0.0
<b>APNCU INDEX</b>												
ADEQUATE+	2	28.6	5	22.7	**	**	0	0.0	**	**	4	36.4
ADEQUATE	2	28.6	6	27.3	**	**	4	50.0	**	**	2	18.2
INTERMEDIATE	1	14.3	5	22.7	**	**	1	12.5	**	**	3	27.3
INADEQUATE	2	28.6	6	27.3	**	**	3	37.5	**	**	2	18.2
<b>KESSNER INDEX</b>												
ADEQUATE	3	42.9	11	50.0	**	**	4	50.0	**	**	6	54.5
INTERMEDIATE	4	57.1	10	45.5	**	**	3	37.5	**	**	5	45.5
INADEQUATE	0	0.0	1	4.5	**	**	1	12.5	**	**	0	0.0
<b>C-SECTION BIRTHS</b>	1	12.5	5	22.7	**	**	2	25.0	**	**	3	27.3
<b>PRE-TERM BIRTHS</b>	0	0.0	1	4.3	**	**	0	0.0	**	**	0	0.0
<b>LOW BIRTHWEIGHT</b>	0	0.0	0	0.0	**	**	0	0.0	**	**	0	0.0

Note: Unknown responses are excluded from the denominator when calculating percentages.

(1) Rate per 1,000 population.

\* Rates based on fewer than 10 occurrences are statistically unreliable and should be used with caution.

\*\* Data suppressed for confidentiality concerns if total births to residents, by race, is less than five observations.



**TABLE 2** **SELECTED BIRTH STATISTICS REPORTED BY MOTHER'S RACE:**  
**2001 AND 1999-2001**  
**YUKON-KOYUKUK CENSUS AREA**

	TOTAL				WHITE				NATIVE			
	2001 NUMBER	2001 RATE*	99-01 NUMBER	99-01 RATE*	2001 NUMBER	2001 RATE*	99-01 NUMBER	99-01 RATE*	2001 NUMBER	2001 RATE*	99-01 NUMBER	99-01 RATE*
<b>BIRTH RATES (1)</b>												
CRUDE BIRTH RATE	73	11.2	303	15.6								
TEEN BIRTH RATE												
15-17	4	19.2 *	24	38.6								
18-19	6	65.2 *	30	127.1								
15-19	10	33.3	54	63.0								
FERTILITY RATE	73	57.1	303	81.6								
	TOTAL				WHITE				NATIVE			
	2001 NUMBER	2001 %	99-01 NUMBER	99-01 %	2001 NUMBER	2001 %	99-01 NUMBER	99-01 %	2001 NUMBER	2001 %	99-01 NUMBER	99-01 %
<b>BIRTHS</b>												
WITHIN AREA	1	100.0	6	100.0	0	0.0	2	33.3	1	100.0	4	66.7
TO RESIDENTS	73	100.0	303	100.0	20	27.4	71	23.4	52	71.2	225	74.3
<b>FACILITY</b>												
HOSPITAL	69	94.5	283	93.4	16	80.0	57	80.3	52	100.0	221	98.2
BIRTHING CENTER	2	2.7	10	3.3	2	10.0	10	14.1	0	0.0	0	0.0
HOME	0	0.0	1	0.3	0	0.0	0	0.0	0	0.0	1	0.4
OTHER	0	0.0	3	1.0	0	0.0	0	0.0	0	0.0	3	1.3
OUTSIDE ALASKA	2	2.7	6	2.0	2	10.0	4	5.6	0	0.0	0	0.0
<b>MOTHER CHARACTERISTICS</b>												
AGE GROUP												
<15	0	0.0	0	0.0	0	0.0	0	0.0	0	0.0	0	0.0
15-19	10	13.7	54	17.8	1	5.0	3	4.2	9	17.3	50	22.2
20-24	21	28.8	80	26.4	3	15.0	15	21.1	18	34.6	65	28.9
25-29	17	23.3	67	22.1	4	20.0	15	21.1	13	25.0	50	22.2
30-34	18	24.7	58	19.1	9	45.0	22	31.0	8	15.4	33	14.7
35-39	6	8.2	35	11.6	2	10.0	13	18.3	4	7.7	21	9.3
40-44	1	1.4	9	3.0	1	5.0	3	4.2	0	0.0	6	2.7
45+	0	0.0	0	0.0	0	0.0	0	0.0	0	0.0	0	0.0
REPORTED DRINKING	5	7.0	17	5.7	0	0.0	1	1.5	5	9.8	16	7.1
REPORTED SMOKING	16	22.5	72	24.2	1	5.3	6	8.8	15	29.4	66	29.5
UNWED	40	55.6	180	60.2	4	21.1	16	23.2	36	69.2	162	72.0
EDUCATION												
<12 YEARS	15	21.4	55	19.1	0	0.0	3	4.2	15	30.6	52	24.3
12 YEARS	43	61.4	164	56.9	10	50.0	28	39.4	32	65.3	133	62.1
12+ YEARS	12	17.1	69	24.0	10	50.0	40	56.3	2	4.1	29	13.6
<b>PRENATAL CARE</b>												
TRIMESTER CARE BEGAN												
1ST TRIMESTER	35	51.5	169	58.3	8	44.4	44	64.7	27	55.1	121	55.8
3RD TRIMESTER	5	7.4	25	8.6	1	5.6	4	5.9	4	8.2	21	9.7
NO PRENATAL CARE	1	1.4	1	0.3	1	5.3	1	1.4	0	0.0	0	0.0
APNCU INDEX												
ADEQUATE+	4	5.8	31	10.7	1	5.3	7	10.1	3	6.1	23	10.6
ADEQUATE	20	29.0	71	24.4	4	21.1	24	34.8	16	32.7	47	21.7
INTERMEDIATE	21	30.4	81	27.8	7	36.8	21	30.4	14	28.6	59	27.2
INADEQUATE	24	34.8	108	37.1	7	36.8	17	24.6	16	32.7	88	40.6
KESSNER INDEX												
ADEQUATE	25	36.2	104	35.7	5	26.3	34	49.3	20	40.8	68	31.3
INTERMEDIATE	38	55.1	161	55.3	12	63.2	30	43.5	25	51.0	128	59.0
INADEQUATE	6	8.7	26	8.9	2	10.5	5	7.2	4	8.2	21	9.7
<b>C-SECTION BIRTHS</b>	16	22.2	42	14.0	4	21.1	10	14.5	11	21.2	30	13.3
<b>PRE-TERM BIRTHS</b>	4	5.5	25	8.3	2	10.0	4	5.6	2	3.8	20	8.9
<b>LOW BIRTHWEIGHT</b>	2	2.8	10	3.3	0	0.0	0	0.0	2	3.8	10	4.4

Note: Unknown responses are excluded from the denominator when calculating percentages.

(1) Rate per 1,000 population.

\* Rates based on fewer than 10 occurrences are statistically unreliable and should be used with caution.

\*\* Data suppressed for confidentiality concerns if total births to residents, by race, is less than five observations.

**TABLE 3 SELECTED BIRTH STATISTICS REPORTED BY MOTHER'S RACE AND NATIVE REGIONAL CORPORATION OF RESIDENCE: 2001 AND 1999-2001****AHTNA INCORPORATED**

	TOTAL				WHITE				NATIVE			
	2001 NUMBER	2001 %	99-01 NUMBER	99-01 %	2001 NUMBER	2001 %	99-01 NUMBER	99-01 %	2001 NUMBER	2001 %	99-01 NUMBER	99-01 %
<b>BIRTHS</b>												
WITHIN AREA	2	100.0	8	100.0	2	100.0	7	87.5	0	0.0	1	12.5
TO RESIDENTS	53	100.0	132	100.0	28	52.8	71	53.8	21	39.6	55	41.7
<b>FACILITY</b>												
HOSPITAL	44	83.0	107	81.1	20	71.4	50	70.4	21	100.0	53	96.4
BIRTHING CENTER	6	11.3	13	9.8	6	21.4	12	16.9	0	0.0	1	1.8
HOME	2	3.8	8	6.1	2	7.1	8	11.3	0	0.0	0	0.0
CLINIC	0	0.0	1	0.8	0	0.0	0	0.0	0	0.0	1	1.8
OUTSIDE ALASKA	1	1.9	3	2.3	0	0.0	1	1.4	0	0.0	0	0.0
<b>MOTHER CHARACTERISTICS</b>												
AGE GROUP												
<15	0	0.0	1	0.8	0	0.0	0	0.0	0	0.0	1	1.8
15-19	7	13.2	23	17.4	2	7.1	6	8.4	5	23.8	17	30.9
15-17	1	1.9	6	4.5	0	0.0	1	1.4	1	4.8	5	9.1
18-19	6	11.3	17	12.9	2	7.1	5	7.0	4	19.0	12	21.8
20-24	13	24.5	29	22.0	5	17.9	15	21.1	7	33.3	12	21.8
25-29	13	24.5	37	28.0	8	28.6	23	32.4	4	19.0	13	23.6
30-34	10	18.9	22	16.7	5	17.9	12	16.9	3	14.3	7	12.7
35-39	6	11.3	14	10.6	5	17.9	10	14.1	1	4.8	4	7.3
40-44	4	7.5	6	4.5	3	10.7	5	7.0	1	4.8	1	1.8
45+	0	0.0	0	0.0	0	0.0	0	0.0	0	0.0	0	0.0
REPORTED DRINKING	1	1.9	3	2.3	1	3.6	2	2.8	0	0.0	1	1.8
REPORTED SMOKING	9	17.3	27	20.9	3	10.7	11	15.5	6	28.6	16	29.6
UNWED	21	40.4	53	40.8	9	32.1	21	29.6	12	57.1	32	58.2
EDUCATION												
<12 YEARS	9	17.3	25	19.4	3	10.7	5	7.0	6	28.6	20	37.0
12 YEARS	27	51.9	55	42.6	13	46.4	29	40.8	12	57.1	23	42.6
12+ YEARS	16	30.8	49	38.0	12	42.9	37	52.1	3	14.3	11	20.4
<b>PRENATAL CARE</b>												
TRIMESTER CARE BEGAN												
1ST TRIMESTER	34	69.4	96	78.0	20	74.1	56	83.6	12	63.2	37	71.2
3RD TRIMESTER	0	0.0	1	0.8	0	0.0	1	1.5	0	0.0	0	0.0
NO PRENATAL CARE	1	2.0	3	2.4	1	3.6	2	2.9	0	0.0	1	1.9
APNCU INDEX												
ADEQUATE+	11	22.4	27	21.8	6	21.4	12	17.6	5	26.3	14	26.4
ADEQUATE	21	42.9	50	40.3	9	32.1	24	35.3	10	52.6	24	45.3
INTERMEDIATE	11	22.4	22	17.7	8	28.6	17	25.0	3	15.8	5	9.4
INADEQUATE	6	12.2	25	20.2	5	17.9	15	22.1	1	5.3	10	18.9
KESSNER INDEX												
ADEQUATE	31	63.3	73	58.9	17	60.7	39	57.4	12	63.2	31	58.5
INTERMEDIATE	17	34.7	47	37.9	10	35.7	26	38.2	7	36.8	21	39.6
INADEQUATE	0	0.0	4	3.2	0	0.0	3	4.4	0	0.0	0	0.0
<b>C-SECTION BIRTHS</b>	8	15.1	18	13.6	8	28.6	16	22.5	0	0.0	2	3.6
<b>PRE-TERM BIRTHS</b>	8	15.1	15	11.4	6	21.4	8	11.3	2	9.5	7	12.7
<b>LOW BIRTHWEIGHT</b>	4	7.5	7	5.3	4	14.3	6	8.5	0	0.0	1	1.8

Note: Unknown responses are excluded from the denominator when calculating percentages.

**TABLE 3 SELECTED BIRTH STATISTICS REPORTED BY MOTHER'S RACE AND NATIVE REGIONAL CORPORATION OF RESIDENCE: 2001 AND 1999-2001**

**ALEUT CORPORATION**

	TOTAL				WHITE				NATIVE			
	2001 NUMBER	2001 %	99-01 NUMBER	99-01 %	2001 NUMBER	2001 %	99-01 NUMBER	99-01 %	2001 NUMBER	2001 %	99-01 NUMBER	99-01 %
<b>BIRTHS</b>												
WITHIN AREA	2	100.0	5	100.0	1	50.0	3	60.0	1	50.0	1	20.0
TO RESIDENTS	60	100.0	177	100.0	23	38.3	65	36.7	29	48.3	89	50.3
<b>FACILITY</b>												
HOSPITAL	46	76.7	130	73.4	13	56.5	30	46.2	28	96.6	88	98.9
BIRTHING CENTER	1	1.7	4	2.3	1	4.3	4	6.2	0	0.0	0	0.0
HOME	0	0.0	0	0.0	0	0.0	0	0.0	0	0.0	0	0.0
CLINIC	2	3.3	3	1.7	1	4.3	1	1.5	1	3.4	1	1.1
OUTSIDE ALASKA	11	18.3	40	22.6	8	34.8	30	46.2	0	0.0	0	0.0
<b>MOTHER CHARACTERISTICS</b>												
<b>AGE GROUP</b>												
<15	0	0.0	1	0.6	0	0.0	0	0.0	0	0.0	1	1.1
15-19	4	6.7	12	6.8	1	4.3	4	6.3	3	10.3	8	9.0
15-17	0	0.0	3	1.7	0	0.0	0	0.0	0	0.0	3	3.4
18-19	4	6.7	9	5.1	1	4.3	4	6.3	3	10.3	5	5.6
20-24	12	20.0	43	24.6	4	17.4	11	17.5	6	20.7	29	32.6
25-29	18	30.0	40	22.9	8	34.8	17	27.0	8	27.6	20	22.5
30-34	7	11.7	35	20.0	2	8.7	11	17.5	2	6.9	13	14.6
35-39	16	26.7	37	21.1	6	26.1	17	27.0	10	34.5	17	19.1
40-44	3	5.0	7	4.0	2	8.7	3	4.8	0	0.0	1	1.1
45+	0	0.0	0	0.0	0	0.0	0	0.0	0	0.0	0	0.0
REPORTED DRINKING	1	1.9	3	1.9	0	0.0	0	0.0	1	3.4	3	3.4
REPORTED SMOKING	15	26.8	46	27.4	1	4.8	4	6.7	14	48.3	41	46.1
UNWED	19	33.9	66	38.8	3	14.3	13	21.3	12	41.4	45	50.6
<b>EDUCATION</b>												
<12 YEARS	7	12.1	19	11.4	2	8.7	4	6.6	5	17.2	13	15.1
12 YEARS	31	53.4	87	52.1	12	52.2	26	42.6	18	62.1	53	61.6
12+ YEARS	20	34.5	61	36.5	9	39.1	31	50.8	6	20.7	20	23.3
<b>PRENATAL CARE</b>												
<b>TRIMESTER CARE BEGAN</b>												
1ST TRIMESTER	45	78.9	133	78.7	17	73.9	47	73.4	24	88.9	72	83.7
3RD TRIMESTER	6	10.5	12	7.1	3	13.0	7	10.9	2	7.4	3	3.5
NO PRENATAL CARE	2	3.5	2	1.2	0	0.0	0	0.0	2	7.1	2	2.3
<b>APNCU INDEX</b>												
ADEQUATE+	20	35.1	76	45.2	5	22.7	17	27.4	14	50.0	53	60.9
ADEQUATE	23	40.4	50	29.8	9	40.9	22	35.5	10	35.7	21	24.1
INTERMEDIATE	4	7.0	17	10.1	3	13.6	11	17.7	0	0.0	5	5.7
INADEQUATE	10	17.5	25	14.9	5	22.7	12	19.4	4	14.3	8	9.2
<b>KESSNER INDEX</b>												
ADEQUATE	42	73.7	119	70.4	15	68.2	39	61.9	23	82.1	69	79.3
INTERMEDIATE	7	12.3	36	21.3	4	18.2	17	27.0	1	3.6	13	14.9
INADEQUATE	8	14.0	14	8.3	3	13.6	7	11.1	4	14.3	5	5.7
<b>C-SECTION BIRTHS</b>	12	20.0	36	20.3	6	26.1	15	23.1	4	13.8	15	16.9
<b>PRE-TERM BIRTHS</b>	7	11.7	12	6.8	2	8.7	5	7.7	4	13.8	6	6.7
<b>LOW BIRTHWEIGHT</b>	3	5.0	3	1.7	0	0.0	0	0.0	2	6.9	2	2.2

Note: Unknown responses are excluded from the denominator when calculating percentages.

**TABLE 3 SELECTED BIRTH STATISTICS REPORTED BY MOTHER'S RACE AND NATIVE REGIONAL CORPORATION OF RESIDENCE: 2001 AND 1999-2001**

**ARCTIC SLOPE CORPORATION**

	TOTAL				WHITE				NATIVE			
	2001 NUMBER	2001 %	99-01 NUMBER	99-01 %	2001 NUMBER	2001 %	99-01 NUMBER	99-01 %	2001 NUMBER	2001 %	99-01 NUMBER	99-01 %
<b>BIRTHS</b>												
WITHIN AREA	38	100.0	128	100.0	2	5.3	5	3.9	31	81.6	106	82.8
TO RESIDENTS	160	100.0	460	100.0	16	10.0	40	8.7	131	81.9	377	82.0
<b>FACILITY</b>												
HOSPITAL	157	98.1	445	96.7	14	87.5	32	80.0	131	100.0	372	98.7
BIRTHING CENTER	0	0.0	0	0.0	0	0.0	0	0.0	0	0.0	0	0.0
HOME	0	0.0	1	0.2	0	0.0	1	2.5	0	0.0	0	0.0
CLINIC	0	0.0	6	1.3	0	0.0	0	0.0	0	0.0	5	1.3
OUTSIDE ALASKA	3	1.9	8	1.7	2	12.5	7	17.5	0	0.0	0	0.0
<b>MOTHER CHARACTERISTICS</b>												
<b>AGE GROUP</b>												
<15	1	0.6	2	0.4	0	0.0	0	0.0	1	0.8	2	0.5
15-19	31	19.4	79	17.1	0	0.0	0	0.0	29	22.1	73	19.4
15-17	11	6.9	31	6.7	0	0.0	0	0.0	10	7.6	29	7.7
18-19	20	12.5	48	10.4	0	0.0	0	0.0	19	14.5	44	11.7
20-24	52	32.5	141	30.7	5	31.3	10	25.0	46	35.1	129	34.2
25-29	33	20.6	103	22.4	6	37.5	12	30.0	24	18.3	75	19.9
30-34	23	14.4	78	17.0	4	25.0	12	30.0	15	11.5	58	15.4
35-39	17	10.6	50	10.9	1	6.3	6	15.0	14	10.7	36	9.5
40-44	3	1.9	7	1.5	0	0.0	0	0.0	2	1.5	4	1.1
45+	0	0.0	0	0.0	0	0.0	0	0.0	0	0.0	0	0.0
REPORTED DRINKING	8	5.1	32	7.1	0	0.0	0	0.0	8	6.2	31	8.4
REPORTED SMOKING	64	40.5	190	41.9	1	6.3	3	7.7	63	48.5	182	48.8
UNWED	88	55.3	255	55.7	0	0.0	0	0.0	81	61.8	237	62.9
<b>EDUCATION</b>												
<12 YEARS	40	25.6	116	26.1	0	0.0	1	2.5	37	29.1	109	30.1
12 YEARS	82	52.6	246	55.4	6	37.5	15	37.5	72	56.7	216	59.7
12+ YEARS	34	21.8	82	18.5	10	62.5	24	60.0	18	14.2	37	10.2
<b>PRENATAL CARE</b>												
<b>TRIMESTER CARE BEGAN</b>												
1ST TRIMESTER	115	73.7	333	74.3	10	62.5	31	79.5	95	74.8	271	73.4
3RD TRIMESTER	11	7.1	37	8.3	1	6.3	2	5.1	8	6.3	31	8.4
NO PRENATAL CARE	1	0.6	4	0.9	0	0.0	0	0.0	1	0.8	4	1.1
<b>APNCU INDEX</b>												
ADEQUATE+	25	16.2	83	18.6	3	18.8	10	26.3	21	16.7	67	18.1
ADEQUATE	33	21.4	120	26.8	6	37.5	13	34.2	23	18.3	95	25.7
INTERMEDIATE	53	34.4	122	27.3	3	18.8	7	18.4	46	36.5	103	27.8
INADEQUATE	43	27.9	122	27.3	4	25.0	8	21.1	36	28.6	105	28.4
<b>KESSNER INDEX</b>												
ADEQUATE	66	42.6	219	48.8	8	50.0	25	64.1	51	40.5	173	46.8
INTERMEDIATE	77	49.7	189	42.1	7	43.8	12	30.8	66	52.4	162	43.8
INADEQUATE	12	7.7	41	9.1	1	6.3	2	5.1	9	7.1	35	9.5
<b>C-SECTION BIRTHS</b>	19	11.9	48	10.4	4	25.0	6	15.0	12	9.2	34	9.0
<b>PRE-TERM BIRTHS</b>	18	11.3	50	10.9	2	12.5	3	7.5	16	12.2	44	11.7
<b>LOW BIRTHWEIGHT</b>	10	6.3	25	5.4	1	6.3	2	5.0	9	6.9	20	5.3

Note: Unknown responses are excluded from the denominator when calculating percentages.

**TABLE 3 SELECTED BIRTH STATISTICS REPORTED BY MOTHER’S RACE AND NATIVE REGIONAL CORPORATION OF RESIDENCE: 2001 AND 1999–2001**

**BERING STRAITS NATIVE CORPORATION**

	TOTAL				WHITE				NATIVE			
	2001 NUMBER	2001 %	99-01 NUMBER	99-01 %	2001 NUMBER	2001 %	99-01 NUMBER	99-01 %	2001 NUMBER	2001 %	99-01 NUMBER	99-01 %
<b>BIRTHS</b>												
WITHIN AREA	119	100.0	323	100.0	3	2.5	13	4.0	116	97.5	307	95.0
TO RESIDENTS	234	100.0	641	100.0	27	11.5	77	12.0	207	88.5	556	86.7
<b>FACILITY</b>												
HOSPITAL	229	97.9	622	97.0	23	85.2	65	84.4	206	99.5	550	98.9
BIRTHING CENTER	1	0.4	3	0.5	1	3.7	2	2.6	0	0.0	1	0.2
HOME	0	0.0	3	0.5	0	0.0	2	2.6	0	0.0	1	0.2
CLINIC	1	0.4	4	0.6	0	0.0	0	0.0	1	0.5	4	0.7
OUTSIDE ALASKA	3	1.3	9	1.4	3	11.1	8	10.4	0	0.0	0	0.0
<b>MOTHER CHARACTERISTICS</b>												
<b>AGE GROUP</b>												
<15	3	1.3	5	0.8	0	0.0	0	0.0	3	1.4	5	0.9
15-19	37	15.8	106	16.6	0	0.0	1	1.3	37	17.9	104	18.7
15-17	20	8.5	44	6.9	0	0.0	0	0.0	20	9.7	43	7.7
18-19	17	7.3	62	9.7	0	0.0	1	1.3	17	8.2	61	11.0
20-24	83	35.5	201	31.4	7	25.9	13	16.9	76	36.7	186	33.5
25-29	54	23.1	161	25.1	8	29.6	21	27.3	46	22.2	136	24.5
30-34	30	12.8	93	14.5	8	29.6	24	31.2	22	10.6	68	12.2
35-39	22	9.4	61	9.5	4	14.8	14	18.2	18	8.7	47	8.5
40-44	5	2.1	13	2.0	0	0.0	3	3.9	5	2.4	10	1.8
45+	0	0.0	1	0.2	0	0.0	1	1.3	0	0.0	0	0.0
REPORTED DRINKING	18	8.0	46	7.4	1	4.0	3	4.1	17	8.5	43	7.9
REPORTED SMOKING	109	48.0	299	47.6	4	15.4	9	12.0	105	52.2	289	53.0
UNWED	152	65.2	384	60.2	2	7.7	13	17.1	150	72.5	370	66.8
<b>EDUCATION</b>												
<12 YEARS	50	22.6	144	23.2	0	0.0	2	2.6	50	25.8	141	26.3
12 YEARS	133	60.2	368	59.4	8	29.6	17	22.4	125	64.4	346	64.6
12+ YEARS	38	17.2	108	17.4	19	70.4	57	75.0	19	9.8	49	9.1
<b>PRENATAL CARE</b>												
<b>TRIMESTER CARE BEGAN</b>												
1ST TRIMESTER	178	81.3	470	75.9	23	92.0	68	91.9	155	79.9	396	73.7
3RD TRIMESTER	10	4.6	50	8.1	1	4.0	2	2.7	9	4.6	47	8.8
NO PRENATAL CARE	6	2.7	11	1.8	0	0.0	0	0.0	6	3.0	11	2.0
<b>APNCU INDEX</b>												
ADEQUATE+	41	18.4	120	19.3	6	24.0	14	19.2	35	17.7	106	19.6
ADEQUATE	87	39.0	224	36.0	8	32.0	32	43.8	79	39.9	188	34.8
INTERMEDIATE	54	24.2	145	23.3	8	32.0	22	30.1	46	23.2	121	22.4
INADEQUATE	41	18.4	133	21.4	3	12.0	5	6.8	38	19.2	126	23.3
<b>KESSNER INDEX</b>												
ADEQUATE	136	61.0	365	58.6	18	72.0	55	75.3	118	59.6	307	56.6
INTERMEDIATE	71	31.8	197	31.6	6	24.0	16	21.9	65	32.8	177	32.7
INADEQUATE	16	7.2	61	9.8	1	4.0	2	2.7	15	7.6	58	10.7
<b>C-SECTION BIRTHS</b>	20	8.5	43	6.7	6	22.2	13	16.9	14	6.8	27	4.9
<b>PRE-TERM BIRTHS</b>	27	11.5	79	12.3	3	11.1	7	9.1	24	11.6	70	12.6
<b>LOW BIRTHWEIGHT</b>	14	6.0	30	4.7	3	11.1	5	6.5	11	5.3	23	4.1

Note: Unknown responses are excluded from the denominator when calculating percentages.

**TABLE 3 SELECTED BIRTH STATISTICS REPORTED BY MOTHER'S RACE AND NATIVE REGIONAL CORPORATION OF RESIDENCE: 2001 AND 1999-2001**

**BRISTOL BAY NATIVE CORPORATION**

	TOTAL				WHITE				NATIVE			
	2001 NUMBER	2001 %	99-01 NUMBER	99-01 %	2001 NUMBER	2001 %	99-01 NUMBER	99-01 %	2001 NUMBER	2001 %	99-01 NUMBER	99-01 %
<b>BIRTHS</b>												
WITHIN AREA	51	100.0	175	100.0	3	5.9	12	6.9	48	94.1	161	92.0
TO RESIDENTS	125	100.0	392	100.0	33	26.4	94	24.0	91	72.8	293	74.7
<b>FACILITY</b>												
HOSPITAL	119	95.2	374	95.4	28	84.8	82	87.2	90	98.9	287	98.0
BIRTHING CENTER	0	0.0	1	0.3	0	0.0	1	1.1	0	0.0	0	0.0
HOME	1	0.8	3	0.8	0	0.0	1	1.1	1	1.1	2	0.7
CLINIC	0	0.0	4	1.0	0	0.0	1	1.1	0	0.0	3	1.0
OUTSIDE ALASKA	5	4.0	10	2.6	5	15.2	9	9.6	0	0.0	1	0.3
<b>MOTHER CHARACTERISTICS</b>												
AGE GROUP												
<15	0	0.0	0	0.0	0	0.0	0	0.0	0	0.0	0	0.0
15-19	19	15.2	66	16.8	2	6.1	5	5.3	17	18.7	61	20.8
15-17	9	7.2	31	7.9	0	0.0	2	2.1	9	9.9	29	9.9
18-19	10	8.0	35	8.9	2	6.1	3	3.2	8	8.8	32	10.9
20-24	33	26.4	107	27.3	2	6.1	10	10.6	30	33.0	93	31.7
25-29	31	24.8	87	22.2	8	24.2	35	37.2	23	25.3	52	17.7
30-34	27	21.6	79	20.2	14	42.4	27	28.7	13	14.3	52	17.7
35-39	9	7.2	40	10.2	2	6.1	11	11.7	7	7.7	28	9.6
40-44	5	4.0	12	3.1	5	15.2	6	6.4	0	0.0	6	2.0
45+	1	0.8	1	0.3	0	0.0	0	0.0	1	1.1	1	0.3
REPORTED DRINKING	11	8.9	24	6.2	4	12.5	8	8.8	7	7.7	16	5.5
REPORTED SMOKING	57	45.6	140	35.9	5	15.2	12	13.0	51	56.0	127	43.3
UNWED	63	50.8	191	49.1	8	25.0	20	21.7	54	59.3	169	57.9
EDUCATION												
<12 YEARS	25	20.2	64	16.6	2	6.3	4	4.4	22	24.2	59	20.3
12 YEARS	66	53.2	218	56.5	10	31.3	34	37.4	56	61.5	183	63.1
12+ YEARS	33	26.6	104	26.9	20	62.5	53	58.2	13	14.3	48	16.6
<b>PRENATAL CARE</b>												
TRIMESTER CARE BEGAN												
1ST TRIMESTER	84	67.2	267	69.2	27	81.8	78	83.9	56	61.5	187	64.9
3RD TRIMESTER	19	15.2	49	12.7	3	9.1	7	7.5	16	17.6	40	13.9
NO PRENATAL CARE	1	0.8	5	1.3	0	0.0	0	0.0	1	1.1	5	1.7
APNCU INDEX												
ADEQUATE+	32	26.2	92	24.0	6	19.4	16	17.6	25	27.8	75	26.0
ADEQUATE	35	28.7	107	27.9	14	45.2	38	41.8	21	23.3	68	23.6
INTERMEDIATE	17	13.9	71	18.5	6	19.4	20	22.0	11	12.2	51	17.7
INADEQUATE	38	31.1	114	29.7	5	16.1	17	18.7	33	36.7	94	32.6
KESSNER INDEX												
ADEQUATE	69	56.1	198	51.4	21	67.7	60	65.9	47	51.6	136	47.1
INTERMEDIATE	34	27.6	133	34.5	7	22.6	24	26.4	27	29.7	108	37.4
INADEQUATE	20	16.3	54	14.0	3	9.7	7	7.7	17	18.7	45	15.6
<b>C-SECTION BIRTHS</b>	19	15.2	37	9.4	13	39.4	22	23.4	6	6.6	15	5.1
<b>PRE-TERM BIRTHS</b>	20	16.0	49	12.5	2	6.1	7	7.4	18	19.8	42	14.3
<b>LOW BIRTHWEIGHT</b>	10	8.0	27	6.9	2	6.1	6	6.4	8	8.8	21	7.2

Note: Unknown responses are excluded from the denominator when calculating percentages.

**TABLE 3 SELECTED BIRTH STATISTICS REPORTED BY MOTHER'S RACE AND NATIVE REGIONAL CORPORATION OF RESIDENCE: 2001 AND 1999-2001**

**CALISTA CORPORATION**

	TOTAL				WHITE				NATIVE			
	2001 NUMBER	2001 %	99-01 NUMBER	99-01 %	2001 NUMBER	2001 %	99-01 NUMBER	99-01 %	2001 NUMBER	2001 %	99-01 NUMBER	99-01 %
<b>BIRTHS</b>												
WITHIN AREA	414	100.0	1,198	100.0	11	2.7	25	2.1	399	96.4	1,166	97.3
TO RESIDENTS	677	100.0	1,953	100.0	36	5.3	89	4.6	636	93.9	1,856	95.0
<b>FACILITY</b>												
HOSPITAL	667	98.5	1,909	97.7	31	86.1	78	87.6	631	99.2	1,823	98.2
BIRTHING CENTER	1	0.1	2	0.1	1	2.8	2	2.2	0	0.0	0	0.0
HOME	2	0.3	4	0.2	1	2.8	2	2.2	1	0.2	2	0.1
CLINIC	4	0.6	28	1.4	0	0.0	0	0.0	4	0.6	28	1.5
OUTSIDE ALASKA	3	0.4	10	0.5	3	8.3	7	7.9	0	0.0	3	0.2
<b>MOTHER CHARACTERISTICS</b>												
<b>AGE GROUP</b>												
<15	3	0.4	3	0.2	0	0.0	0	0.0	3	0.5	3	0.2
15-19	113	16.7	300	15.4	0	0.0	1	1.1	113	17.8	299	16.1
15-17	33	4.9	113	5.8	0	0.0	0	0.0	33	5.2	113	6.1
18-19	80	11.8	187	9.6	0	0.0	1	1.1	80	12.6	186	10.0
20-24	185	27.3	525	26.9	7	19.4	12	13.5	177	27.8	512	27.6
25-29	172	25.4	513	26.3	12	33.3	30	33.7	159	25.0	482	26.0
30-34	115	17.0	366	18.7	12	33.3	35	39.3	101	15.9	326	17.6
35-39	68	10.0	194	9.9	5	13.9	10	11.2	63	9.9	184	9.9
40-44	21	3.1	49	2.5	0	0.0	1	1.1	20	3.1	47	2.5
45+	0	0.0	3	0.2	0	0.0	0	0.0	0	0.0	3	0.2
REPORTED DRINKING	32	4.8	102	5.3	1	3.0	1	1.2	31	5.0	101	5.5
REPORTED SMOKING	130	19.4	406	20.9	3	8.6	6	6.8	127	20.2	400	21.7
UNWED	338	50.0	960	49.3	2	5.6	7	7.9	335	52.8	952	51.5
<b>EDUCATION</b>												
<12 YEARS	162	25.1	439	23.3	0	0.0	2	2.4	162	26.7	437	24.4
12 YEARS	403	62.5	1,203	63.9	12	36.4	24	28.6	389	64.1	1,176	65.7
12+ YEARS	80	12.4	240	12.8	21	63.6	58	69.0	56	9.2	177	9.9
<b>PRENATAL CARE</b>												
<b>TRIMESTER CARE BEGAN</b>												
1ST TRIMESTER	400	61.2	1,200	62.8	25	78.1	67	78.8	370	60.0	1,126	61.9
3RD TRIMESTER	65	9.9	218	11.4	4	12.5	9	10.6	61	9.9	209	11.5
NO PRENATAL CARE	5	0.8	12	0.6	1	3.2	1	1.2	4	0.6	11	0.6
<b>APNCU INDEX</b>												
ADEQUATE+	53	8.2	191	10.1	7	22.6	20	24.1	46	7.5	171	9.5
ADEQUATE	131	20.2	369	19.5	10	32.3	29	34.9	119	19.4	337	18.7
INTERMEDIATE	189	29.2	535	28.2	6	19.4	14	16.9	182	29.7	518	28.7
INADEQUATE	274	42.3	799	42.2	8	25.8	20	24.1	265	43.3	778	43.1
<b>KESSNER INDEX</b>												
ADEQUATE	178	27.3	562	29.6	18	58.1	51	61.4	158	25.6	507	28.0
INTERMEDIATE	403	61.9	1,107	58.3	8	25.8	22	26.5	393	63.8	1,082	59.8
INADEQUATE	70	10.8	230	12.1	5	16.1	10	12.0	65	10.6	220	12.2
<b>C-SECTION BIRTHS</b>	60	8.9	150	7.7	10	27.8	15	16.9	48	7.5	133	7.2
<b>PRE-TERM BIRTHS</b>	118	17.4	272	13.9	2	5.6	5	5.6	115	18.1	266	14.3
<b>LOW BIRTHWEIGHT</b>	43	6.4	106	5.4	0	0.0	1	1.1	43	6.8	105	5.7

Note: Unknown responses are excluded from the denominator when calculating percentages.

**TABLE 3 SELECTED BIRTH STATISTICS REPORTED BY MOTHER'S RACE AND NATIVE REGIONAL CORPORATION OF RESIDENCE: 2001 AND 1999-2001**

**CHUGACH ALASKA CORPORATION**

	TOTAL				WHITE				NATIVE			
	2001 NUMBER	2001 %	99-01 NUMBER	99-01 %	2001 NUMBER	2001 %	99-01 NUMBER	99-01 %	2001 NUMBER	2001 %	99-01 NUMBER	99-01 %
<b>BIRTHS</b>												
WITHIN AREA	54	100.0	132	100.0	43	79.6	104	78.8	6	11.1	15	11.4
TO RESIDENTS	155	100.0	467	100.0	107	69.0	320	68.5	33	21.3	108	23.1
<b>FACILITY</b>												
HOSPITAL	144	92.9	437	93.6	97	90.7	292	91.3	33	100.0	108	100.0
BIRTHING CENTER	4	2.6	11	2.4	4	3.7	10	3.1	0	0.0	0	0.0
HOME	4	2.6	5	1.1	3	2.8	4	1.3	0	0.0	0	0.0
CLINIC	0	0.0	0	0.0	0	0.0	0	0.0	0	0.0	0	0.0
OUTSIDE ALASKA	3	1.9	14	3.0	3	2.8	14	4.4	0	0.0	0	0.0
<b>MOTHER CHARACTERISTICS</b>												
<b>AGE GROUP</b>												
<15	0	0.0	0	0.0	0	0.0	0	0.0	0	0.0	0	0.0
15-19	13	8.3	43	9.2	6	5.6	23	7.2	6	18.2	17	15.8
15-17	1	0.6	9	1.9	1	0.9	5	1.6	0	0.0	3	2.8
18-19	12	7.7	34	7.3	5	4.7	18	5.6	6	18.2	14	13.0
20-24	38	24.5	116	24.8	26	24.3	83	25.9	9	27.3	25	23.1
25-29	45	29.0	133	28.5	32	29.9	86	26.9	10	30.3	38	35.2
30-34	37	23.9	102	21.8	29	27.1	74	23.1	5	15.2	18	16.7
35-39	15	9.7	57	12.2	8	7.5	41	12.8	3	9.1	8	7.4
40-44	6	3.9	15	3.2	5	4.7	12	3.8	0	0.0	2	1.9
45+	1	0.6	1	0.2	1	0.9	1	0.3	0	0.0	0	0.0
REPORTED DRINKING	4	2.6	19	4.1	2	1.9	11	3.5	2	6.1	8	7.5
REPORTED SMOKING	25	16.2	103	22.2	12	11.2	49	15.5	10	31.3	48	44.9
UNWED	43	27.7	144	30.9	21	19.6	80	25.1	17	51.5	53	49.1
<b>EDUCATION</b>												
<12 YEARS	13	8.6	44	9.8	7	6.7	24	7.7	5	15.6	17	16.5
12 YEARS	56	37.1	173	38.4	35	33.3	105	33.5	17	53.1	53	51.5
12+ YEARS	82	54.3	234	51.9	63	60.0	184	58.8	10	31.3	33	32.0
<b>PRENATAL CARE</b>												
<b>TRIMESTER CARE BEGAN</b>												
1ST TRIMESTER	125	84.5	370	82.2	91	88.3	263	84.6	24	77.4	79	76.7
3RD TRIMESTER	3	2.0	11	2.4	1	1.0	5	1.6	1	3.2	3	2.9
NO PRENATAL CARE	1	0.7	3	0.7	1	1.0	3	1.0	0	0.0	0	0.0
<b>APNCU INDEX</b>												
ADEQUATE+	35	25.2	105	24.3	24	24.7	76	25.3	8	26.7	23	22.8
ADEQUATE	50	36.0	170	39.4	39	40.2	126	42.0	7	23.3	32	31.7
INTERMEDIATE	37	26.6	93	21.5	25	25.8	61	20.3	10	33.3	26	25.7
INADEQUATE	17	12.2	64	14.8	9	9.3	37	12.3	5	16.7	20	19.8
<b>KESSNER INDEX</b>												
ADEQUATE	91	65.0	283	65.2	68	69.4	212	70.4	17	56.7	54	53.5
INTERMEDIATE	45	32.1	137	31.6	28	28.6	81	26.9	12	40.0	44	43.6
INADEQUATE	4	2.9	14	3.2	2	2.0	8	2.7	1	3.3	3	3.0
<b>C-SECTION BIRTHS</b>	26	16.8	78	16.7	20	18.7	63	19.7	5	15.2	12	11.1
<b>PRE-TERM BIRTHS</b>	16	10.3	53	11.3	8	7.5	30	9.4	4	12.1	13	12.0
<b>LOW BIRTHWEIGHT</b>	16	10.3	37	7.9	12	11.2	27	8.4	1	3.0	5	4.6

Note: Unknown responses are excluded from the denominator when calculating percentages.



**TABLE 3 SELECTED BIRTH STATISTICS REPORTED BY MOTHER'S RACE AND NATIVE REGIONAL CORPORATION OF RESIDENCE: 2001 AND 1999-2001**

**COOK INLET REGIONAL CORPORATION**

	TOTAL				WHITE				NATIVE			
	2001 NUMBER	2001 %	99-01 NUMBER	99-01 %	2001 NUMBER	2001 %	99-01 NUMBER	99-01 %	2001 NUMBER	2001 %	99-01 NUMBER	99-01 %
<b>BIRTHS</b>												
WITHIN AREA	6,443	100.0	19,142	100.0	4,261	66.1	12,904	67.4	1,340	20.8	3,852	20.1
TO RESIDENTS	5,581	100.0	16,653	100.0	4,077	73.1	12,361	74.2	700	12.5	1,993	12.0
<b>FACILITY</b>												
HOSPITAL	5,296	94.9	15,739	94.5	3,822	93.7	11,521	93.2	694	99.1	1,975	99.1
BIRTHING CENTER	172	3.1	546	3.3	161	3.9	516	4.2	4	0.6	11	0.6
HOME	82	1.5	271	1.6	70	1.7	246	2.0	1	0.1	4	0.2
CLINIC	0	0.0	5	0.0	0	0.0	5	0.0	0	0.0	0	0.0
OUTSIDE ALASKA	31	0.6	92	0.6	24	0.6	73	0.6	1	0.1	3	0.2
<b>MOTHER CHARACTERISTICS</b>												
<b>AGE GROUP</b>												
<15	5	0.1	22	0.1	2	0.0	10	0.1	3	0.4	4	0.2
15-19	551	9.9	1,763	10.6	339	8.3	1,096	8.9	109	15.6	352	17.7
15-17	154	2.8	558	3.4	85	2.1	306	2.5	41	5.9	141	7.1
18-19	397	7.1	1,205	7.2	254	6.2	790	6.4	68	9.7	211	10.6
20-24	1,518	27.2	4,429	26.6	1,049	25.7	3,140	25.4	242	34.6	654	32.8
25-29	1,474	26.4	4,564	27.4	1,100	27.0	3,465	28.0	166	23.7	497	24.9
30-34	1,224	21.9	3,522	21.2	954	23.4	2,774	22.4	111	15.9	292	14.7
35-39	648	11.6	1,858	11.2	501	12.3	1,486	12.0	58	8.3	149	7.5
40-44	150	2.7	463	2.8	124	3.0	363	2.9	9	1.3	43	2.2
45+	10	0.2	27	0.2	7	0.2	23	0.2	2	0.3	2	0.1
REPORTED DRINKING	123	2.2	411	2.5	73	1.8	251	2.0	41	5.9	133	6.8
REPORTED SMOKING	852	15.4	2,572	15.6	549	13.6	1,707	13.9	225	32.4	652	33.1
UNWED	1,671	30.0	5,058	30.4	972	23.9	3,017	24.4	411	59.0	1,157	58.4
<b>EDUCATION</b>												
<12 YEARS	678	12.4	2,072	12.7	376	9.3	1,187	9.7	191	27.8	573	29.7
12 YEARS	2,326	42.5	6,499	39.9	1,621	40.3	4,681	38.4	363	52.9	906	46.9
12+ YEARS	2,464	45.1	7,726	47.4	2,029	50.4	6,333	51.9	132	19.2	452	23.4
<b>PRENATAL CARE</b>												
<b>TRIMESTER CARE BEGAN</b>												
1ST TRIMESTER	4,600	84.7	13,651	84.0	3,431	85.9	10,357	85.3	558	82.2	1,559	80.2
3RD TRIMESTER	150	2.8	454	2.8	94	2.4	304	2.5	24	3.5	64	3.3
NO PRENATAL CARE	23	0.4	70	0.4	9	0.2	35	0.3	10	1.5	20	1.0
<b>APNCU INDEX</b>												
ADEQUATE+	1,422	27.9	4,700	29.9	1,079	28.9	3,617	30.9	188	27.9	485	25.1
ADEQUATE	2,381	46.6	7,361	46.9	1,776	47.6	5,666	48.4	287	42.6	817	42.2
INTERMEDIATE	779	15.3	2,030	12.9	544	14.6	1,387	11.9	99	14.7	331	17.1
INADEQUATE	523	10.2	1,606	10.2	331	8.9	1,031	8.8	100	14.8	303	15.7
<b>KESSNER INDEX</b>												
ADEQUATE	3,976	77.6	12,132	77.2	2,996	80.1	9,341	79.7	472	69.8	1,284	66.2
INTERMEDIATE	972	19.0	3,069	19.5	640	17.1	2,037	17.4	170	25.1	571	29.4
INADEQUATE	173	3.4	524	3.3	103	2.8	339	2.9	34	5.0	84	4.3
<b>C-SECTION BIRTHS</b>	1,190	21.3	3,111	18.7	911	22.3	2,410	19.5	103	14.7	237	11.9
<b>PRE-TERM BIRTHS</b>	537	9.6	1,712	10.3	352	8.6	1,169	9.5	80	11.4	230	11.5
<b>LOW BIRTHWEIGHT</b>	331	5.9	997	6.0	214	5.2	640	5.2	46	6.6	140	7.0

Note: Unknown responses are excluded from the denominator when calculating percentages.

**TABLE 3 SELECTED BIRTH STATISTICS REPORTED BY MOTHER'S RACE AND NATIVE REGIONAL CORPORATION OF RESIDENCE: 2001 AND 1999-2001**

**DOYON LIMITED**

	TOTAL				WHITE				NATIVE			
	2001 NUMBER	2001 %	99-01 NUMBER	99-01 %	2001 NUMBER	2001 %	99-01 NUMBER	99-01 %	2001 NUMBER	2001 %	99-01 NUMBER	99-01 %
<b>BIRTHS</b>												
WITHIN AREA	1,647	100.0	4,981	100.0	1,229	74.6	3,632	72.9	207	12.6	708	14.2
TO RESIDENTS	1,670	100.0	5,068	100.0	1,233	73.8	3,666	72.3	220	13.2	747	14.7
<b>FACILITY</b>												
HOSPITAL	1,577	94.4	4,790	94.5	1,148	93.1	3,416	93.2	217	98.6	738	98.8
BIRTHING CENTER	53	3.2	159	3.1	50	4.1	148	4.0	1	0.5	3	0.4
HOME	23	1.4	69	1.4	21	1.7	65	1.8	0	0.0	1	0.1
CLINIC	4	0.2	10	0.2	4	0.3	7	0.2	0	0.0	3	0.4
OUTSIDE ALASKA	13	0.8	40	0.8	10	0.8	30	0.8	2	0.9	2	0.3
<b>MOTHER CHARACTERISTICS</b>												
<b>AGE GROUP</b>												
<15	2	0.1	8	0.2	2	0.2	7	0.2	0	0.0	0	0.0
15-19	137	8.2	497	9.8	87	7.0	298	8.1	37	16.8	135	18.0
15-17	31	1.9	149	2.9	20	1.6	81	2.2	9	4.1	48	6.4
18-19	106	6.3	348	6.9	67	5.4	217	5.9	28	12.7	87	11.6
20-24	538	32.2	1,618	31.9	376	30.5	1,129	30.8	78	35.5	246	32.9
25-29	476	28.5	1,427	28.2	346	28.1	1,048	28.6	63	28.6	203	27.2
30-34	320	19.2	937	18.5	260	21.1	727	19.8	28	12.7	96	12.9
35-39	160	9.6	468	9.2	130	10.5	367	10.0	13	5.9	54	7.2
40-44	35	2.1	107	2.1	31	2.5	85	2.3	1	0.5	13	1.7
45+	2	0.1	6	0.1	1	0.1	5	0.1	0	0.0	0	0.0
REPORTED DRINKING	13	0.8	64	1.3	3	0.2	28	0.8	10	4.6	31	4.2
REPORTED SMOKING	210	12.6	677	13.4	131	10.7	425	11.6	61	28.0	206	27.7
UNWED	407	24.4	1,322	26.1	213	17.3	675	18.4	144	65.5	479	64.1
<b>EDUCATION</b>												
<12 YEARS	154	9.6	518	10.5	98	8.0	312	8.6	43	21.1	166	23.3
12 YEARS	733	45.6	2,246	45.7	530	43.5	1,573	43.5	120	58.8	374	52.5
12+ YEARS	719	44.8	2,148	43.7	590	48.4	1,733	47.9	41	20.1	173	24.3
<b>PRENATAL CARE</b>												
<b>TRIMESTER CARE BEGAN</b>												
1ST TRIMESTER	1,247	76.8	3,775	76.1	948	78.7	2,822	78.4	141	66.8	458	63.3
3RD TRIMESTER	79	4.9	270	5.4	55	4.6	176	4.9	17	8.1	69	9.5
NO PRENATAL CARE	4	0.2	8	0.2	4	0.3	7	0.2	0	0.0	0	0.0
<b>APNCU INDEX</b>												
ADEQUATE+	354	21.9	1,121	22.6	265	22.0	811	22.5	31	14.8	134	18.5
ADEQUATE	633	39.1	1,894	38.2	492	40.9	1,461	40.6	65	31.0	194	26.8
INTERMEDIATE	342	21.1	974	19.6	251	20.9	693	19.3	50	23.8	163	22.5
INADEQUATE	291	18.0	971	19.6	194	16.1	634	17.6	64	30.5	232	32.1
<b>KESSNER INDEX</b>												
ADEQUATE	1,025	63.2	3,104	62.6	787	65.4	2,361	65.6	102	48.6	322	44.5
INTERMEDIATE	514	31.7	1,580	31.8	358	29.7	1,057	29.4	91	43.3	332	45.9
INADEQUATE	83	5.1	278	5.6	59	4.9	183	5.1	17	8.1	69	9.5
<b>C-SECTION BIRTHS</b>	251	15.0	768	15.2	174	14.1	545	14.9	33	15.0	119	15.9
<b>PRE-TERM BIRTHS</b>	145	8.7	473	9.3	105	8.5	323	8.8	17	7.7	88	11.8
<b>LOW BIRTHWEIGHT</b>	79	4.7	276	5.4	59	4.8	182	5.0	7	3.2	51	6.8

Note: Unknown responses are excluded from the denominator when calculating percentages.

**TABLE 3 SELECTED BIRTH STATISTICS REPORTED BY MOTHER'S RACE AND NATIVE REGIONAL CORPORATION OF RESIDENCE: 2001 AND 1999-2001**

**KONIAG INCORPORATED**

	TOTAL				WHITE				NATIVE			
	2001 NUMBER	2001 %	99-01 NUMBER	99-01 %	2001 NUMBER	2001 %	99-01 NUMBER	99-01 %	2001 NUMBER	2001 %	99-01 NUMBER	99-01 %
<b>BIRTHS</b>												
WITHIN AREA	198	100.0	644	100.0	111	56.1	364	56.5	38	19.2	108	16.8
TO RESIDENTS	214	100.0	700	100.0	123	57.5	396	56.6	39	18.2	128	18.3
<b>FACILITY</b>												
HOSPITAL	210	98.1	678	96.9	120	97.6	376	94.9	38	97.4	126	98.4
BIRTHING CENTER	0	0.0	1	0.1	0	0.0	1	0.3	0	0.0	0	0.0
HOME	4	1.9	18	2.6	3	2.4	17	4.3	1	2.6	1	0.8
CLINIC	0	0.0	1	0.1	0	0.0	0	0.0	0	0.0	1	0.8
OUTSIDE ALASKA	0	0.0	2	0.3	0	0.0	2	0.5	0	0.0	0	0.0
<b>MOTHER CHARACTERISTICS</b>												
<b>AGE GROUP</b>												
<15	1	0.5	2	0.3	1	0.8	1	0.3	0	0.0	1	0.8
15-19	8	3.8	51	7.3	3	2.4	20	5.1	2	5.2	16	12.5
15-17	4	1.9	12	1.7	1	0.8	3	0.8	1	2.6	4	3.1
18-19	4	1.9	39	5.6	2	1.6	17	4.3	1	2.6	12	9.4
20-24	55	25.7	176	25.1	29	23.6	96	24.2	12	30.8	35	27.3
25-29	58	27.1	181	25.9	33	26.8	103	26.0	15	38.5	39	30.5
30-34	49	22.9	154	22.0	33	26.8	95	24.0	5	12.8	21	16.4
35-39	32	15.0	98	14.0	19	15.4	59	14.9	4	10.3	11	8.6
40-44	11	5.1	38	5.4	5	4.1	22	5.6	1	2.6	5	3.9
45+	0	0.0	0	0.0	0	0.0	0	0.0	0	0.0	0	0.0
REPORTED DRINKING	5	2.3	17	2.4	2	1.6	5	1.3	3	7.7	12	9.7
REPORTED SMOKING	31	14.5	102	14.7	15	12.2	47	11.9	15	38.5	49	39.5
UNWED	61	28.5	189	27.0	25	20.3	65	16.4	15	38.5	59	46.1
<b>EDUCATION</b>												
<12 YEARS	21	10.0	87	12.6	7	5.7	33	8.4	7	17.9	20	15.9
12 YEARS	81	38.4	281	40.6	36	29.5	133	33.8	23	59.0	66	52.4
12+ YEARS	109	51.7	324	46.8	79	64.8	228	57.9	9	23.1	40	31.7
<b>PRENATAL CARE</b>												
<b>TRIMESTER CARE BEGAN</b>												
1ST TRIMESTER	172	81.1	530	76.6	106	86.9	322	82.6	31	79.5	100	78.7
3RD TRIMESTER	6	2.8	35	5.1	4	3.3	16	4.1	1	2.6	6	4.7
NO PRENATAL CARE	0	0.0	3	0.4	0	0.0	3	0.8	0	0.0	0	0.0
<b>APNCU INDEX</b>												
ADEQUATE+	39	18.6	104	15.1	29	24.2	66	16.9	4	10.3	18	14.5
ADEQUATE	79	37.6	236	34.2	48	40.0	152	38.9	15	38.5	38	30.6
INTERMEDIATE	61	29.0	210	30.4	29	24.2	111	28.4	12	30.8	40	32.3
INADEQUATE	31	14.8	140	20.3	14	11.7	62	15.9	8	20.5	28	22.6
<b>KESSNER INDEX</b>												
ADEQUATE	130	61.9	405	58.7	87	72.5	264	67.5	23	59.0	72	58.1
INTERMEDIATE	74	35.2	247	35.8	29	24.2	108	27.6	15	38.5	46	37.1
INADEQUATE	6	2.9	38	5.5	4	3.3	19	4.9	1	2.6	6	4.8
<b>C-SECTION BIRTHS</b>	48	22.4	115	16.4	32	26.0	67	16.9	6	15.4	22	17.2
<b>PRE-TERM BIRTHS</b>	22	10.3	78	11.1	14	11.4	38	9.6	1	2.6	16	12.5
<b>LOW BIRTHWEIGHT</b>	16	7.5	51	7.3	12	9.8	26	6.6	0	0.0	6	4.7

Note: Unknown responses are excluded from the denominator when calculating percentages.

**TABLE 3 SELECTED BIRTH STATISTICS REPORTED BY MOTHER'S RACE AND NATIVE REGIONAL CORPORATION OF RESIDENCE: 2001 AND 1999-2001**

**NANA REGIONAL CORPORATION**

	TOTAL				WHITE				NATIVE			
	2001 NUMBER	2001 %	99-01 NUMBER	99-01 %	2001 NUMBER	2001 %	99-01 NUMBER	99-01 %	2001 NUMBER	2001 %	99-01 NUMBER	99-01 %
<b>BIRTHS</b>												
WITHIN AREA	93	100.0	299	100.0	4	4.3	8	2.7	89	95.7	291	97.3
TO RESIDENTS	160	100.0	497	100.0	9	5.6	30	6.0	149	93.1	465	93.6
<b>FACILITY</b>												
HOSPITAL	158	98.8	488	98.2	8	88.9	27	90.0	148	99.3	459	98.7
BIRTHING CENTER	0	0.0	0	0.0	0	0.0	0	0.0	0	0.0	0	0.0
HOME	1	0.6	2	0.4	0	0.0	0	0.0	1	0.7	2	0.4
CLINIC	0	0.0	4	0.8	0	0.0	0	0.0	0	0.0	4	0.9
OUTSIDE ALASKA	1	0.6	3	0.6	1	11.1	3	10.0	0	0.0	0	0.0
<b>MOTHER CHARACTERISTICS</b>												
<b>AGE GROUP</b>												
<15	0	0.0	1	0.2	0	0.0	0	0.0	0	0.0	1	0.2
15-19	35	21.9	101	20.3	1	11.1	2	6.6	34	22.9	99	21.3
15-17	12	7.5	36	7.2	0	0.0	1	3.3	12	8.1	35	7.5
18-19	23	14.4	65	13.1	1	11.1	1	3.3	22	14.8	64	13.8
20-24	43	26.9	137	27.6	1	11.1	3	10.0	42	28.2	134	28.8
25-29	33	20.6	118	23.7	3	33.3	11	36.7	29	19.5	106	22.8
30-34	33	20.6	86	17.3	2	22.2	10	33.3	30	20.1	75	16.1
35-39	13	8.1	39	7.8	2	22.2	3	10.0	11	7.4	36	7.7
40-44	3	1.9	13	2.6	0	0.0	0	0.0	3	2.0	13	2.8
45+	0	0.0	2	0.4	0	0.0	1	3.3	0	0.0	1	0.2
REPORTED DRINKING	14	8.8	57	11.6	0	0.0	0	0.0	13	8.8	56	12.1
REPORTED SMOKING	76	47.8	246	49.9	2	22.2	2	6.9	74	50.0	244	52.8
UNWED	94	59.1	303	61.7	3	33.3	6	21.4	91	61.5	297	64.4
<b>EDUCATION</b>												
<12 YEARS	53	35.6	145	32.1	1	12.5	2	7.1	52	37.4	143	33.9
12 YEARS	81	54.4	256	56.6	2	25.0	4	14.3	79	56.8	252	59.7
12+ YEARS	15	10.1	51	11.3	5	62.5	22	78.6	8	5.8	27	6.4
<b>PRENATAL CARE</b>												
<b>TRIMESTER CARE BEGAN</b>												
1ST TRIMESTER	102	65.0	355	72.7	6	66.7	24	80.0	94	64.4	329	72.1
3RD TRIMESTER	10	6.4	28	5.7	0	0.0	1	3.3	10	6.8	27	5.9
NO PRENATAL CARE	1	0.6	4	0.8	0	0.0	0	0.0	1	0.7	4	0.9
<b>APNCU INDEX</b>												
ADEQUATE+	29	18.8	101	20.9	2	22.2	10	34.5	27	18.9	91	20.1
ADEQUATE	32	20.8	130	26.9	2	22.2	10	34.5	30	21.0	120	26.5
INTERMEDIATE	41	26.6	125	25.8	5	55.6	7	24.1	34	23.8	116	25.6
INADEQUATE	52	33.8	128	26.4	0	0.0	2	6.9	52	36.4	126	27.8
<b>KESSNER INDEX</b>												
ADEQUATE	61	39.6	235	48.5	4	44.4	20	69.0	56	39.2	214	47.1
INTERMEDIATE	82	53.2	218	44.9	5	55.6	8	27.6	76	53.1	209	46.0
INADEQUATE	11	7.1	32	6.6	0	0.0	1	3.4	11	7.7	31	6.8
<b>C-SECTION BIRTHS</b>	8	5.0	27	5.4	1	11.1	7	23.3	6	4.0	19	4.1
<b>PRE-TERM BIRTHS</b>	22	13.8	69	13.9	0	0.0	2	6.7	22	14.8	67	14.4
<b>LOW BIRTHWEIGHT</b>	8	5.0	31	6.2	0	0.0	2	6.7	8	5.4	29	6.2

Note: Unknown responses are excluded from the denominator when calculating percentages.

**TABLE 3 SELECTED BIRTH STATISTICS REPORTED BY MOTHER'S RACE AND NATIVE REGIONAL CORPORATION OF RESIDENCE: 2001 AND 1999-2001**

**SEALASKA CORPORATION**

	TOTAL				WHITE				NATIVE			
	2001 NUMBER	2001 %	99-01 NUMBER	99-01 %	2001 NUMBER	2001 %	99-01 NUMBER	99-01 %	2001 NUMBER	2001 %	99-01 NUMBER	99-01 %
<b>BIRTHS</b>												
WITHIN AREA	856	100.0	2,604	100.0	573	66.9	1,763	67.7	219	25.6	658	25.3
TO RESIDENTS	917	100.0	2,798	100.0	600	65.4	1,869	66.8	242	26.4	713	25.5
<b>FACILITY</b>												
HOSPITAL	817	89.1	2,470	88.3	528	88.0	1,613	86.3	231	95.5	680	95.4
BIRTHING CENTER	56	6.1	142	5.1	42	7.0	117	6.3	8	3.3	15	2.1
HOME	18	2.0	74	2.6	16	2.7	68	3.6	0	0.0	3	0.4
CLINIC	1	0.1	9	0.3	0	0.0	1	0.1	1	0.4	8	1.1
OUTSIDE ALASKA	25	2.7	103	3.7	14	2.3	70	3.7	2	0.8	7	1.0
<b>MOTHER CHARACTERISTICS</b>												
<b>AGE GROUP</b>												
<15	0	0.0	1	0.0	0	0.0	0	0.0	0	0.0	1	0.1
15-19	101	11.0	300	10.7	38	6.4	143	7.7	57	23.5	137	19.3
15-17	25	2.7	85	3.0	7	1.2	35	1.9	17	7.0	41	5.8
18-19	76	8.3	215	7.7	31	5.2	108	5.8	40	16.5	96	13.5
20-24	203	22.2	665	23.8	110	18.4	400	21.4	77	31.8	223	31.3
25-29	252	27.5	775	27.7	178	29.7	545	29.2	53	21.9	174	24.4
30-34	212	23.1	610	21.8	161	26.9	451	24.1	31	12.8	104	14.6
35-39	124	13.5	369	13.2	95	15.9	275	14.7	20	8.3	61	8.6
40-44	24	2.6	73	2.6	17	2.8	50	2.7	4	1.7	13	1.8
45+	0	0.0	4	0.1	0	0.0	4	0.2	0	0.0	0	0.0
REPORTED DRINKING	30	3.4	94	3.5	18	3.1	53	3.0	11	4.6	37	5.3
REPORTED SMOKING	147	16.4	524	19.2	86	14.6	305	16.6	56	23.5	201	28.4
UNWED	324	35.6	948	34.1	147	24.6	467	25.1	159	65.7	428	60.0
<b>EDUCATION</b>												
<12 YEARS	108	13.1	329	12.6	38	7.1	140	8.0	59	26.0	166	24.4
12 YEARS	321	38.9	1,088	41.7	195	36.2	659	37.6	113	49.8	356	52.4
12+ YEARS	396	48.0	1,193	45.7	306	56.8	955	54.4	55	24.2	158	23.2
<b>PRENATAL CARE</b>												
<b>TRIMESTER CARE BEGAN</b>												
1ST TRIMESTER	693	85.8	2,218	85.3	488	88.7	1,546	87.4	159	78.7	519	79.8
3RD TRIMESTER	20	2.5	51	2.0	8	1.5	25	1.4	11	5.4	23	3.5
NO PRENATAL CARE	3	0.4	10	0.4	2	0.4	8	0.5	0	0.0	1	0.2
<b>APNCU INDEX</b>												
ADEQUATE+	233	33.8	695	28.2	159	33.8	479	28.4	59	34.5	175	28.9
ADEQUATE	296	42.9	1,029	41.8	214	45.5	766	45.5	63	36.8	197	32.6
INTERMEDIATE	85	12.3	478	19.4	53	11.3	293	17.4	22	12.9	139	23.0
INADEQUATE	76	11.0	260	10.6	44	9.4	147	8.7	27	15.8	94	15.5
<b>KESSNER INDEX</b>												
ADEQUATE	525	76.0	1,829	74.2	375	79.6	1,316	78.1	119	69.6	401	66.2
INTERMEDIATE	143	20.7	574	23.3	86	18.3	337	20.0	41	24.0	181	29.9
INADEQUATE	23	3.3	61	2.5	10	2.1	33	2.0	11	6.4	24	4.0
<b>C-SECTION BIRTHS</b>	224	24.4	630	22.5	153	25.5	444	23.8	51	21.1	128	18.0
<b>PRE-TERM BIRTHS</b>	67	7.3	223	8.0	32	5.3	118	6.3	28	11.6	77	10.8
<b>LOW BIRTHWEIGHT</b>	30	3.3	102	3.6	15	2.5	62	3.3	10	4.1	28	3.9

Note: Unknown responses are excluded from the denominator when calculating percentages.