

# CHILD AND ADOLESCENT DEATHS



*"Kittiwakes, St. George"*  
Copyright Rie Munoz, Ltd.

## INTRODUCTION

This chapter provides information on deaths to children and adolescents from 0 to 19 years of age. Deaths and death rates are reported by the following age groups: less than 1 year, 1 to 4 years, 5 to 9 years, 10 to 14 years, 15 to 19 years, and the total number of child and adolescent deaths. Note that for infants less than 1 year of age, infant

death rates are reported only at the statewide level. The infant death rates reported in this chapter are different than the infant mortality rates reported in Chapter 2. Infant mortality rates are based on the number of live births, while infant death rates are based on the estimated population under 1 year of age.

Statewide child and adolescent deaths and death rates are reported by age group and the sex and race of the child or adolescent. However, due to the low number of reportable events for most areas, child and adolescent deaths by census area, borough, and Native Regional Corporation are only reported by age group. Also, since population estimates for infants less than one year of age are only available at the statewide level, the death rates for this age group are not reported by census area (borough). Infant mortality rates by census area (borough) are available in Chapter 2. Since population estimates are not available by Native Regional Corporation and age group, rates are not reported in Table 13.

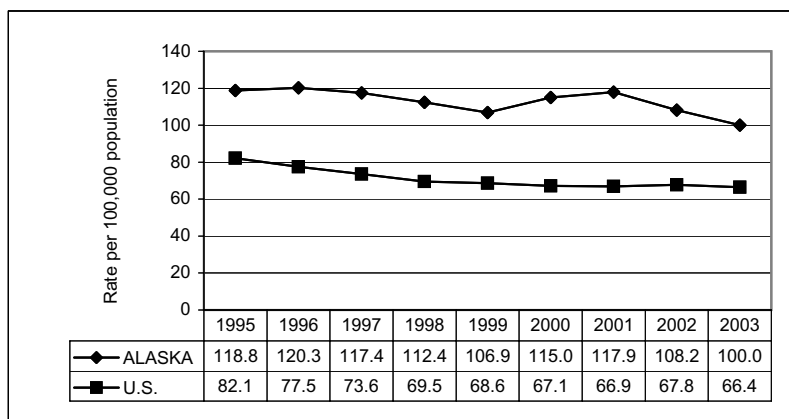
Death rates for Alaskan adolescents are higher than the corresponding U.S. rates in all age groups (Table 10). Both the Alaska and the U.S. death rates for adolescents age 15 to 19 (Figure 11) are lower than in 1995 (15.8 percent and 19.1 percent, respectively), although the Alaska rate is still 50.6 percent higher than the U.S. rate for this age group. Unfortunately, national death rates by cause were not available for the 15 to 19 age group at the time of printing. Typically, Alaskan teens in this age group are more likely to die from suicide compared with U.S. teens. In 2003, the suicide rate for this age group in Alaska was over three times the 2002 national rate (24.5 per 100,000 vs. 7.4). Typically, Alaska has a higher rate of unintentional injuries than the U.S. rate. In 2003, though, the unintentional injury rate for Alaska was lower than the 2002 U.S. rate (25.4 per 100,000 vs. 35.0).

**TABLE 10 AGE-SPECIFIC ADOLESCENT DEATH RATES: ALASKA AND THE U.S.\*, 1995–2003**

	1995	1996	1997	1998	1999	2000	2001	2002	2003
<b>ALASKA</b>									
1–4	55.3	52.0	56.0	48.3	45.7	43.5	49.3	45.1	41.7
5–9	23.6	21.7	25.2	23.4	23.6	19.2	17.3	15.1	16.6
10–14	37.8	28.4	33.6	32.0	27.8	27.0	27.8	36.7	41.7
15–19	118.8	120.3	117.4	112.4	106.9	115.0	117.9	108.2	100.0
1–19	54.8	51.8	54.8	51.6	49.0	49.6	51.7	50.9	50.4
<b>U.S.</b>									
1–4	40.4	38.0	35.5	34.1	34.2	32.4	33.3	31.2	31.5
5–9	19.4	19.0	18.0	17.2	16.9	15.8	15.3	15.2	14.7
10–14	25.1	23.4	22.5	21.5	20.4	20.3	19.2	19.5	19.1
15–19	82.1	77.5	73.6	69.5	68.6	67.1	66.9	67.8	66.4
1–19	41.3	39.2	37.2	35.5	34.9	33.9	33.6	33.5	N/A

Note: Alaska rates are three-year moving averages. Rates are per 100,000 population.

**FIGURE 11 DEATH RATES FOR ADOLESCENTS AGE 15–19: ALASKA AND THE U.S.\*, 1995–2003**



Note: Alaska rates are three-year moving averages. U.S. rates are single year rates.

The remaining tables in this chapter show the annual occurrences of adolescent deaths to Alaskan residents during 2003 and for the three-year period 2001 through 2003. Selected causes of death by age group are shown in Table 14 (pages 73-74). The causes of death are based on the 113 selected causes of death tabulation list in ICD-10. From 1979 to 1998, causes of death were classified using ICD-9. Publications or tables showing mortality data under ICD-10 may differ substantially from those under ICD-9. Cause-of-death data across ICD revisions are not directly comparable, unless adjustments are made for the coding and classification changes. For further discussion on the implications of changing ICD revisions, please refer to Appendix C.

\*U.S. rates provided by the United States Department of Health and Human Services (US DHHS), Centers for Disease Control and Prevention (CDC), National Center for Health Statistics (NCHS), Office of Analysis, Epidemiology, (OAE): Compressed Mortality File (CMF) compiled from CMF 1968–1988, Series 20, No. 2A 2000, CMF 1989–1998, Series 20, No. 2E 2003 and CMF 1999–2002, Series 20, No. 2H 2004 on CDC WONDER On-line Database; "Deaths: Final Data for 2003"; National Vital Statistics Report, Vol. 54, No. 13, April 19, 2006.



**TABLE 12 CHILD AND ADOLESCENT DEATHS BY CENSUS AREA OR BOROUGH OF RESIDENCE AND AGE GROUP: ALASKA, 2003 AND 2001–2003**

CENSUS AREA/BOROUGH	0–4				5–9				10–14			
	2003 DEATHS	2003 RATE	01–03 DEATHS	01–03 RATE	2003 DEATHS	2003 RATE	01–03 DEATHS	01–03 RATE	2003 DEATHS	2003 RATE	01–03 DEATHS	01–03 RATE
ALEUTIANS EAST BOROUGH	0	0.0	0	0.0	0	0.0	0	0.0	0	0.0	0	0.0
ALEUTIANS WEST CENSUS AREA	1	413.2 *	1	137.2 *	0	0.0	0	0.0	0	0.0	0	0.0
MUNICIPALITY OF ANCHORAGE	22	99.2	84	128.6	3	13.9 *	8	12.2 *	12	51.9	27	39.4
BETHEL CENSUS AREA	9	432.9 *	27	437.2	1	52.7 *	3	52.8 *	2	105.3 *	4	71.3 *
BRISTOL BAY BOROUGH	0	0.0	0	0.0	0	0.0	0	0.0	0	0.0	0	0.0
DENALI BOROUGH	1	980.4 *	1	325.7 *	1	970.9 *	1	322.6 *	0	0.0	0	0.0
DILLINGHAM CENSUS AREA	1	198.0 *	4	274.0 *	0	0.0	0	0.0	0	0.0	2	116.8 *
FAIRBANKS NORTH STAR BOROUGH	16	232.1	35	165.6	1	15.5 *	4	19.4 *	2	28.5 *	7	31.9 *
HAINES BOROUGH	0	0.0	0	0.0	0	0.0	0	0.0	0	0.0	0	0.0
JUNEAU BOROUGH	3	144.2 *	15	248.3	0	0.0	0	0.0	1	39.6 *	2	26.4 *
KENAI PENINSULA BOROUGH	8	242.2 *	15	154.0	1	28.0 *	2	18.2 *	3	67.9 *	4	29.5 *
KETCHIKAN GATEWAY BOROUGH	0	0.0	3	110.3 *	0	0.0	0	0.0	0	0.0	0	0.0
KODIAK ISLAND BOROUGH	2	170.8 *	6	164.6 *	0	0.0	0	0.0	0	0.0	0	0.0
LAKE AND PENINSULA BOROUGH	0	0.0	0	0.0	0	0.0	0	0.0	0	0.0	0	0.0
MATANUSKA-SUSITNA BOROUGH	8	169.6 *	24	178.9	1	18.8 *	2	12.8 *	4	63.5 *	8	42.6 *
NOME CENSUS AREA	7	658.5 *	13	417.9	0	0.0	1	34.6 *	0	0.0	1	30.0 *
NORTH SLOPE BOROUGH	3	386.1 *	7	312.6 *	0	0.0	0	0.0	0	0.0	1	38.2 *
NORTHWEST ARCTIC BOROUGH	3	364.1 *	7	278.3 *	0	0.0	0	0.0	0	0.0	4	136.0 *
PRINCE OF WALES-OUTER KETCHIKAN CENSUS AREA	0	0.0	1	87.2 *	0	0.0	0	0.0	0	0.0	0	0.0
SITKA BOROUGH	0	0.0	1	53.7 *	1	166.9 *	1	52.5 *	0	0.0	0	0.0
SKAGWAY-HOONAH-ANGOON CENSUS AREA	0	0.0	0	0.0	0	0.0	0	0.0	0	0.0	0	0.0
SOUTHEAST FAIRBANKS CENSUS AREA	1	221.7 *	2	152.7 *	0	0.0	2	140.2 *	0	0.0	0	0.0
VALDEZ-CORDOVA CENSUS AREA	0	0.0	1	49.4 *	0	0.0	0	0.0	1	117.4 *	1	37.9 *
WADE HAMPTON CENSUS AREA	1	96.2 *	8	257.5 *	0	0.0	1	33.7 *	1	98.1 *	4	132.6 *
WRANGELL-PETERSBURG CENSUS AREA	0	0.0	0	0.0	0	0.0	0	0.0	1	194.2 *	3	180.0 *
YAKUTAT BOROUGH	0	0.0	0	0.0	1	2564.1 *	1	595.2 *	0	0.0	0	0.0
YUKON-KOYUKUK CENSUS AREA	1	189.4 *	2	125.5 *	0	0.0	0	0.0	1	158.5 *	4	196.9 *
ALASKA	88	170.9	259	169.7	10	19.6	26	16.6	28	49.0	72	41.7

(Continued ⇒)

Note: Statewide totals include deaths where the census area or borough of residence is unknown.

\*Rates based on fewer than 10 occurrences are statistically unreliable and should be used with caution.

Population estimates are not available for infants less than one year of age by census area, so deaths and death rates for this age group are not reported separately. Rates are per 100,000 population.

**TABLE 12 CHILD AND ADOLESCENT DEATHS BY CENSUS AREA OR BOROUGH OF RESIDENCE AND AGE GROUP: ALASKA, 2003 AND 2001–2003** (Continued)

CENSUS AREA/BOROUGH	15–19				0–19			
	2003 DEATHS	2003 RATE	01–03 DEATHS	01–03 RATE	2003 DEATHS	2003 RATE	01–03 DEATHS	01–03 RATE
ALEUTIANS EAST BOROUGH	0	0.0	1	230.4 *	0	0.0	1	72.4 *
ALEUTIANS WEST CENSUS AREA	1	467.3 *	1	143.3 *	2	220.5 *	2	70.2 *
MUNICIPALITY OF ANCHORAGE	18	85.3	41	66.1	55	62.5	160	61.2
BETHEL CENSUS AREA	8	502.2 *	16	348.2	20	267.7	50	226.6
BRISTOL BAY BOROUGH	0	0.0	0	0.0	0	0.0	0	0.0
DENALI BOROUGH	0	0.0	0	0.0	2	419.3 *	2	140.6 *
DILLINGHAM CENSUS AREA	3	665.2 *	3	231.8 *	4	199.6 *	9	148.9 *
FAIRBANKS NORTH STAR BOROUGH	6	90.6 *	18	89.8	25	92.7	64	76.4
HAINES BOROUGH	0	0.0	0	0.0	0	0.0	0	0.0
JUNEAU BOROUGH	2	82.0 *	3	41.5 *	6	65.7 *	20	73.2
KENAI PENINSULA BOROUGH	1	21.9 *	11	80.6	13	82.0	32	66.7
KETCHIKAN GATEWAY BOROUGH	1	93.8 *	4	123.5 *	1	24.8 *	7	57.1 *
KODIAK ISLAND BOROUGH	0	0.0	3	92.6 *	2	41.0 *	9	60.5 *
LAKE AND PENINSULA BOROUGH	0	0.0	2	403.2 *	0	0.0	2	104.0 *
MATANUSKA-SUSITNA BOROUGH	4	64.4 *	13	71.4	17	75.5	47	71.2
NOME CENSUS AREA	5	574.1 *	9	350.3 *	12	302.4	24	201.5
NORTH SLOPE BOROUGH	1	134.6 *	2	90.5 *	4	132.4 *	10	109.8
NORTHWEST ARCTIC BOROUGH	4	500.0 *	10	442.9	7	208.6 *	21	208.4
PRINCE OF WALES-OUTER KETCHIKAN CENSUS AREA	0	0.0	2	130.9 *	0	0.0	3	54.7 *
SITKA BOROUGH	0	0.0	1	49.7 *	1	38.9 *	3	38.2 *
SKAGWAY-HOONAH-ANGOON CENSUS AREA	0	0.0	1	134.0 *	0	0.0	1	38.9 *
SOUTHEAST FAIRBANKS CENSUS AREA	0	0.0	1	63.8 *	1	50.0 *	5	82.4 *
VALDEZ-CORDOVA CENSUS AREA	1	111.0 *	3	113.9 *	2	63.1 *	5	52.9 *
WADE HAMPTON CENSUS AREA	5	609.0 *	7	298.5 *	7	182.1 *	20	175.0
WRANGELL-PETERSBURG CENSUS AREA	1	180.8 *	1	59.8 *	2	108.2 *	4	68.4 *
YAKUTAT BOROUGH	0	0.0	0	0.0	1	460.8 *	1	146.4 *
YUKON-KOYUKUK CENSUS AREA	0	0.0	5	269.7 *	2	89.8 *	11	158.8
ALASKA	61	114.3	158	100.0	187	87.8	515	80.5

Note: Statewide totals include deaths where the census area or borough of residence is unknown.

\*Rates based on fewer than 10 occurrences are statistically unreliable and should be used with caution.

Population estimates are not available for infants less than one year of age by census area, so deaths and death rates for this age group are not reported separately. Rates are per 100,000 population.

TABLE 13

**CHILD AND ADOLESCENT DEATHS BY NATIVE REGIONAL  
CORPORATION AND AGE GROUP: ALASKA, 2003 AND 2001-2003**

NATIVE REGIONAL CORPORATION	0-4		5-9		10-14		15-19		0-19	
	2003 DEATHS	01-03 DEATHS	2003 DEATHS	01-03 DEATHS	2003 DEATHS	01-03 DEATHS	2003 DEATHS	01-03 DEATHS	2003 DEATHS	01-03 DEATHS
AHTNA CORPORATION	0	0	0	0	0	0	1	2	1	2
ALEUT CORPORATION	1	1	0	0	0	0	1	2	2	3
ARCTIC SLOPE REGIONAL CORPORATION	3	7	0	0	0	1	1	2	4	10
BERING STRAITS NATIVE CORPORATION	7	13	0	1	0	1	5	9	12	24
BRISTOL BAY NATIVE CORPORATION	1	4	0	0	0	2	3	5	4	11
CALISTA CORPORATION	10	35	1	4	3	8	13	23	27	70
CHUGACH ALASKA CORPORATION	0	1	0	0	1	1	0	2	1	4
COOK INLET REGION INCORPORATED	38	123	5	12	19	39	23	64	85	238
DOYON LIMITED	19	40	2	7	3	11	6	24	30	82
KONIAG INCORPORATED	2	6	0	0	0	0	0	3	2	9
NANA REGIONAL CORPORATION	3	7	0	0	0	4	4	10	7	21
SEALASKA CORPORATION	3	20	2	2	2	5	4	12	11	39
ALASKA	88	259	10	26	28	72	61	158	187	515

Note: Rates are not calculated since population estimates by Native Regional Corporation and age group are not available.

TABLE 14 CHILD AND ADOLESCENT DEATHS BY SELECTED CAUSES OF DEATH AND AGE GROUP: ALASKA, 2003 AND 2001-2003

CAUSE OF DEATH (ICD-10 CODES)	<1			1-4			5-9			
	2003 DEATHS	2003 RATE	01-03 DEATHS	01-03 RATE	2003 DEATHS	2003 RATE	01-03 DEATHS	01-03 RATE	2003 DEATHS	2003 RATE
NATURAL CAUSES (A00-R99)	4	39.2*	5	16.4*	4	9.7*	4	3.3*	0	0.0
INFECTIOUS AND PARASITIC DISEASES (A00-B99)	0	0.0	0	0.0	0	0.0	0	0.8*	1	2.0*
MALIGNANT NEOPLASMS (C00-C97)	2	19.6*	4	13.1*	0	0.0	1	0.8*	0	0.0
HEART DISEASE (I00-I09,I11,I13,I20-I51)	0	0.0	0	0.0	1	2.4*	1	0.8*	0	0.0
CEREBROVASCULAR DISEASE (I60-I69)	4	39.2*	9	29.5*	0	0.0	0	0.0	0	0.0
PNEUMONIA (J12-J18)	0	0.0	0	0.0	0	0.0	0	0.0	0	0.0
CHRONIC LOWER RESPIRATORY DISEASE (J40-J47)	1	9.8*	6	19.7*	0	0.0	0	0.0	0	0.0
OTHER RESPIRATORY DISEASES (J00-J06,J30-J39,J67,J70-J98)	19	186.4	54	177.1	0	0.0	0	0.0	0	0.0
PERINATAL CONDITIONS (P00-P96)	12	117.7	42	137.7	0	0.0	2	1.6*	0	0.0
CONGENITAL MALFORMATIONS (Q00-Q99)	12	117.7	32	104.9	0	0.0	0	0.0	0	0.0
SIDS (R95)	9	88.3*	19	62.3	3	7.3*	15	12.3	3	5.9*
ALL OTHER NATURAL CAUSES (**)	63	617.9	171	560.7	8	19.4*	24	19.6	4	7.9*
TOTAL NATURAL CAUSES										
UNINTENTIONAL INJURY (V01-X59,Y85-Y86)	0	0.0	1	3.3*	4	9.7*	6	4.9*	2	3.9*
MOTOR VEHICLE (***)	0	0.0	1	3.3*	0	0.0	0	0.0	0	0.0
WATER TRANSPORT (V90-V94)	0	0.0	0	0.0	0	0.0	0	0.0	0	0.0
AIR TRANSPORT (V95-V97)	0	0.0	0	0.0	0	0.0	0	0.0	0	0.0
OTHER TRANSPORT ACCIDENTS (****)	0	0.0	0	0.0	0	0.0	0	0.0	0	0.0
FALLS (W00-W19)	0	0.0	0	0.0	0	0.0	0	0.0	0	0.0
ACCIDENTAL DISCHARGE OF FIREARMS (W32-W34)	0	0.0	0	0.0	0	0.0	0	0.0	0	0.0
DROWNING (W65-W74)	0	0.0	2	6.6*	2	4.8*	7	5.7*	2	3.9*
EXPOSURE TO SMOKE, FIRE, AND FLAMES (X00-X09)	0	0.0	0	0.0	1	2.4*	3	2.5*	0	0.0
POISONING (X40-X49)	0	0.0	0	0.0	1	2.4*	2	1.6*	1	2.0*
ALL OTHER UNINTENTIONAL INJURIES (W20-W31,W35-W64,W75-W99,X10-X39,X50-X59,Y86)	4	39.2*	22	72.1	2	4.8*	5	4.1*	0	0.0
TOTAL UNINTENTIONAL INJURY	4	39.2*	26	85.2	10	24.2	23	18.8	5	9.8*
INTENTIONAL INJURIES (U01-U03,X60-Y09,Y87.0-Y87.1)	0	0.0	2	6.6*	0	0.0	2	1.6*	0	0.0
INTENTIONAL SELF-HARM (SUICIDE) (U03,X60-X84,Y87.0)	0	0.0	0	0.0	0	0.0	0	0.0	0	0.0
SUICIDE BY DISCHARGE OF FIREARMS (X72-X74)	1	9.8*	4	13.1*	0	0.0	0	0.0	0	0.0
SUICIDE BY OTHER AND UNSPECIFIED MEANS (U03,X60-X71,X75-X84,Y87.0)	0	0.0	0	0.0	0	0.0	0	0.0	1	2.0*
TOTAL INTENTIONAL SELF-HARM (SUICIDE)	0	0.0	0	0.0	0	0.0	0	0.0	1	2.0*
ASSAULT (U01-U02,X85-Y09,Y87.1)	0	0.0	0	0.0	0	0.0	0	0.0	0	0.0
ASSAULT BY DISCHARGE OF FIREARMS (U01.4,X93-X95)	0	0.0	2	6.6*	0	0.0	2	1.6*	0	0.0
ASSAULT BY OTHER AND UNSPECIFIED MEANS (U01.0-U01.3,U01.5-U01.9,U02,X85-X93,X96-Y09,Y87.1)	1	9.8*	4	13.1*	0	0.0	0	0.0	0	0.0
TOTAL ASSAULT	1	9.8*	6	19.7*	0	0.0	2	1.6*	0	0.0
TOTAL INTENTIONAL INJURIES	1	9.8*	6	19.7*	0	0.0	2	1.6*	1	2.0*
LEGAL INTERVENTION (Y35,Y89.0)	0	0.0	0	0.0	0	0.0	0	0.0	0	0.0
UNDETERMINED INTENT (Y10-Y34,Y87.2,Y89.9)	0	0.0	0	0.0	0	0.0	0	0.0	0	0.0
DISCHARGE OF FIREARMS, UNKNOWN INTENT (Y22-Y24)	1	9.8*	4	13.1*	0	0.0	1	0.8*	0	0.0
OTHER UNDETERMINED INTENT (Y10-Y21,Y25-Y34,Y87.2)	1	9.8*	4	13.1*	0	0.0	2	1.6*	0	0.0
TOTAL UNDETERMINED INTENT	0	0.0	0	0.0	0	0.0	1	0.8*	0	0.0
COMPLICATIONS OF MEDICAL CARE (Y40-Y84,Y88)	0	0.0	0	0.0	0	0.0	1	0.8*	0	0.0
TOTAL DEATHS	70	686.6	208	682.0	18	43.6	51	41.7	10	19.6

\* Rates based on fewer than 10 occurrences are statistically unreliable and should be used with caution.

\*\* R00-R94,R96-R99,D65-E07,E15-E34,E65-F99,G04-G12,G23-G25,G31-H93,K00-K22,K29-K31,K50-K66,K71-K72,K75-K76,K83-M99,N13.0-N13.5,N13.7-N13.9,N14N15.0N15.8-N15.9,N20-N23,N28-N39,N41-N64,N80-N98

\*\*\* V02-V04,V06,V09.2,V12-V14,V19.0-V19.2,V19.4-V19.6,V20-V79,V80.3-V80.5,V81.0-V81.1,V82.0-V82.1,V83-V86,V87.0-V87.8,V88.0-V88.8,V89.0,V89.2

\*\*\*\* V01,V05,V09.1,V09.3-V09.9,V10-V11,V15-V18,V19.3,V19.8-V19.9,V80.0-V80.2,V80.6-V80.9,V81.2-V81.9,V82.2-V82.9,V87.9,V88.9,V89.1,V89.3,V89.9,V98-V99,Y85

Continued →

TABLE 14 CHILD AND ADOLESCENT DEATHS BY SELECTED CAUSES OF DEATH AND AGE GROUP: ALASKA, 2003 AND 2001-2003

CAUSE OF DEATH (ICD-10 CODES)	10-14			15-19			0-19			
	2003	01-03	01-03	2003	01-03	01-03	2003	01-03	01-03	
	DEATHS	RATE	DEATHS	RATE	DEATHS	RATE	DEATHS	RATE	DEATHS	RATE
NATURAL CAUSES (A00-R99)										
INFECTIOUS AND PARASITIC DISEASES (A00-B99)	0	0.0	2	1.2*	0	0.0	1	0.6*	8	3.8*
MALIGNANT NEOPLASMS (C00-C97)	3	5.2*	4	2.3*	1	1.9*	5	3.2*	5	2.3*
HEART DISEASE (I00-I09,I11,I13,I20-I51)	1	1.7*	4	2.3*	3	5.6*	4	2.5*	6	2.8*
CEREBROVASCULAR DISEASE (I60-I69)	0	0.0	0	0.0	0	0.0	0	0.0	1	0.5*
PNEUMONIA (J12-J18)	0	0.0	1	0.6*	0	0.0	2	1.3*	4	1.9*
CHRONIC LOWER RESPIRATORY DISEASE (J40-J47)	1	1.7*	1	0.6*	0	0.0	0	0.0	1	0.5*
OTHER RESPIRATORY DISEASES (J00-J06,J30-J39,I67,I70-J98)	1	1.7*	1	0.6*	0	0.0	0	0.0	2	0.9*
PERINATAL CONDITIONS (P00-P96)	0	0.0	0	0.0	0	0.0	0	0.0	19	8.9
CONGENITAL MALFORMATIONS (Q00-Q99)	0	0.0	3	1.7*	1	1.9*	3	1.9*	13	6.1
SIDS (R95)	0	0.0	0	0.0	0	0.0	0	0.0	12	5.6
ALL OTHER NATURAL CAUSES (**)	3	5.2*	7	4.1*	4	7.5*	14	8.9	22	10.3
TOTAL NATURAL CAUSES	9	15.7*	23	13.3	9	16.9*	29	18.4	93	43.7
UNINTENTIONAL INJURY (V01-X59,Y85-Y86)										
MOTOR VEHICLE (***)	8	14.0*	16	9.3	12	22.5	36	22.8	26	12.2
WATER TRANSPORT (V90-V94)	0	0.0	0	0.0	1	1.9*	4	2.5*	1	0.5*
AIR TRANSPORT (V95-V97)	0	0.0	0	0.0	0	0.0	1	0.6*	0	0.0
OTHER TRANSPORT ACCIDENTS (****)	0	0.0	1	0.6*	1	1.9*	1	0.6*	1	0.5*
FALLS (W00-W19)	0	0.0	2	1.2*	0	0.0	1	0.6*	0	0.0
ACCIDENTAL DISCHARGE OF FIREARMS (W32-W34)	1	1.7*	1	0.6*	1	1.9*	3	1.9*	2	0.9*
DROWNING (W65-W74)	2	3.5*	5	2.9*	1	1.9*	5	3.2*	7	3.3*
EXPOSURE TO SMOKE, FIRE, AND FLAMES (X00-X09)	0	0.0	0	0.0	0	0.0	0	0.0	1	0.5*
POISONING (X40-X49)	2	3.5*	5	2.9*	5	9.4*	7	4.4*	9	4.2*
ALL OTHER UNINTENTIONAL INJURIES (W20-W31,W35-W64,W75-W99,X10-X39,X50-X59,Y86)	0	0.0	3	1.7*	1	1.9*	4	2.5*	7	3.3*
TOTAL UNINTENTIONAL INJURY	13	22.7	33	19.1	22	41.2	62	39.2	54	25.4
INTENTIONAL INJURIES (U01-U03,X60-Y09,Y87.0-Y87.1)										
INTENTIONAL SELF-HARM (SUICIDE) (U03,X60-X84,Y87.0)										
SUICIDE BY DISCHARGE OF FIREARMS (X72-X74)	1	1.7*	4	2.3*	12	22.5	30	19.0	13	6.1
SUICIDE BY OTHER AND UNSPECIFIED MEANS (U03,X60-X71,X75-X84,Y87.0)	1	1.7*	3	1.7*	8	15.0*	19	12.0	10	4.7
TOTAL INTENTIONAL SELF-HARM (SUICIDE)	2	3.5*	7	4.1*	20	37.5	49	31.0	23	10.8
ASSAULT (U01-U02,X85-Y09,Y87.1)										
ASSAULT BY DISCHARGE OF FIREARMS (U01.4,X93-X95)	3	5.2*	7	4.1*	8	15.0*	13	8.2	11	5.2
ASSAULT BY OTHER AND UNSPECIFIED MEANS (U01.0-U01.3,U01.5-U01.9,U02,X85-X93,X96-Y09,Y87.1)	0	0.0	1	0.6*	1	1.9*	2	1.3*	2	0.9*
TOTAL ASSAULT	3	5.2*	8	4.6*	9	16.9*	15	9.5	13	6.1
TOTAL INTENTIONAL INJURIES	5	8.7*	15	8.7	29	54.3	64	40.5	36	16.9
LEGAL INTERVENTION (Y35,Y89.0)	0	0.0	0	0.0	0	0.0	0	0.0	0	0.0
UNDETERMINED INTENT (Y10-Y34,Y87.2,Y89.9)										
DISCHARGE OF FIREARMS, UNKNOWN INTENT (Y22-Y24)	1	1.7*	1	0.6*	0	0.0	1	0.6*	1	0.5*
OTHER UNDETERMINED INTENT (Y10-Y21,Y25-Y34,Y87.2)	0	0.0	0	0.0	1	1.9*	1	0.6*	2	0.9*
TOTAL UNDETERMINED INTENT	1	1.7*	1	0.6*	1	1.9*	3	1.9*	3	1.4*
COMPLICATIONS OF MEDICAL CARE (Y40-Y84,Y88)	0	0.0	0	0.0	0	0.0	1	0.6*	0	0.0
TOTAL DEATHS	28	49.0	72	41.7	61	114.3	158	100.0	187	87.8

\* Rates based on fewer than 10 occurrences are statistically unreliable and should be used with caution.

\*\* R00-R94,R96-R99,D65-E07,E15-E34,E65-F99,G04-G12,G23-G25,G31-H93,K00-K22,K29-K31,K50-K66,K71-K72,K75-K76,K83-M99,N13.0-N13.5,N13.7-N13.9,N14,N15.0,N15.8-N15.9,N20-N23,N28-N39,N41-N64,N80-N98

\*\*\* Y02-V04,V09.0,V09.2,V12-V14,V19.0-V19.2,V19.4-V19.6,V20-V79,V80.3-V80.5,V81.0-V81.1,V82.0-V82.1,V83-V86,V87.0-V87.8,V88.0-V88.8,V89.0,V89.2

\*\*\*\* V01,V05-V06,V09.1,V09.3-V09.9,V10-V11,V15-V18,V19.3,V19.8-V19.9,V80.0-V80.2,V80.6-V80.9,V81.2-V81.9,V82.2-V82.9,V87.9,V88.9,V89.1,V89.3,V89.9,V98-V99,Y85