

BIRTHS



"The Embrace"
Copyright Rie Munoz, Ltd.

INTRODUCTION

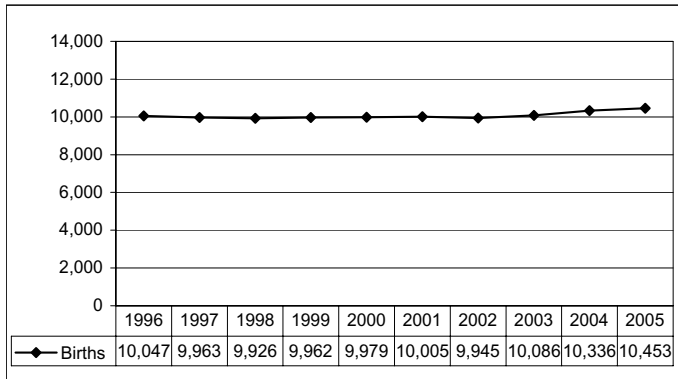
The Alaska birth certificate provides information about each baby born in Alaska, regardless of the mother's residence state. Through a vital statistics cooperative agreement, birth information is also collected for Alaska mothers who have a baby in another state. Thus, the Bureau of Vital Statistics Information System contains records on all births occurring in the state and all births to residents of Alaska.

The birth certificate contains information about the mother, the father, the pregnancy, and the child. Birth information is collected in hospitals and birth centers

from worksheets completed by parents or medical staff, from medical charts, or by a combination of these sources. Midwives and family members who deliver a baby collect the birth information from their records or from a parent and complete the birth certificate.

This chapter reports information from the birth certificate such as pregnancy history, parents' education, prenatal care, mother's health risk behaviors, and birth weight, which can be used to monitor and help improve the health of mothers and children.

FIGURE 1 ALASKA RESIDENT BIRTHS, 1996–2005



There were 10,453 live births to Alaska residents in 2005 (Figure 1). This is an increase of 1.1 percent from the 10,336 births recorded in 2004. Of these births, 5,427 were boys and 5,026 were girls. Of the 10,453 births in 2005, there were 128 sets of twins and 2 sets of triplets.

The natural increase in Alaska’s population (the increase of births over deaths) was 7,304 persons, representing a natural increase rate of 11.0 persons per 1,000 population. This is a decrease of 0.9 percent from the natural increase rate of 11.1 recorded in 2004.

The 2005 crude birth rate of 15.8 per 1,000 population was a 0.6 percent increase from the 2004 crude birth rate, and a 4.8 percent decrease from the crude birth rate of 16.6 per 1,000 population recorded in 1996. The preliminary 2005 crude birth rate for the United States was 14.0 live births per 1,000 population¹, which is a decline of 4.8 percent from the rate of 14.7 in 1996.

FIGURE 2 CRUDE BIRTH RATES: U.S. AND ALASKA, 1996–2005

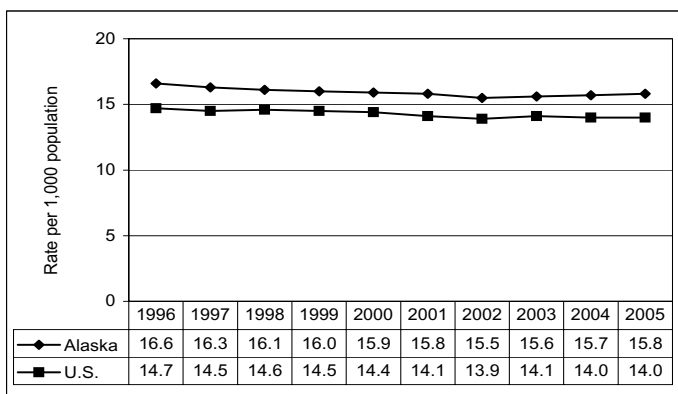
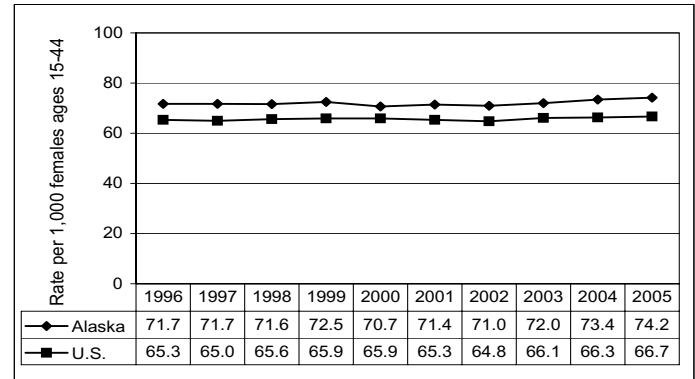


FIGURE 3 FERTILITY RATES: U.S. AND ALASKA, 1996–2005



In order to calculate crude birth rates (Figure 2), fertility rates, or any of the other rates used in this report, population estimates must be used. Population estimates are provided by the Department of Labor, Division of Administrative Services, Research and Analysis Section, Demographics Unit. Please refer to Appendix H for the population estimates used in this report.

The fertility rate (Figure 3) is a more meaningful measure of behavioral patterns than the crude birth rate since it is a measure of the number of births compared to the number of women of usual child-bearing age (15–44 years). The 2005 fertility rate for Alaska was 74.2 births per 1,000 women, representing a 1.1 percent increase from the 2004 fertility rate of 73.4. Alaska’s fertility rate was 11.2 percent higher than the preliminary U.S. fertility rate of 66.7 in 2005.

The 2005 teen (ages 15–19) birth rate for Alaska was 38.9, which is 3.7 percent lower than the 2005 preliminary U.S. teen birth rate of 40.4 (Figure 4). Alaska’s 2005 teen birth rate reflects a decrease of 4.9 percent from the 2004 rate of 40.9. The teen birth rate in Alaska has declined by nearly one-quarter (24.6 percent) since 1996.

¹ National Center for Health Statistics, U.S. Department of Health and Human Services, “Births: Preliminary Data for 2005,” National Vital Statistics Report, Vol. 55, No. 11, December 28, 2006.

FIGURE 4 TEEN BIRTH RATES: U.S. AND ALASKA, 1996–2005

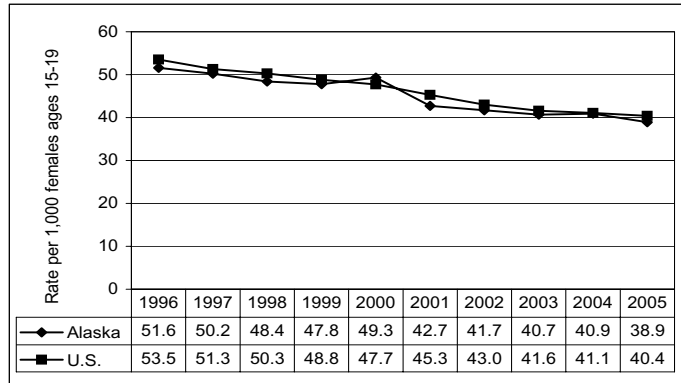
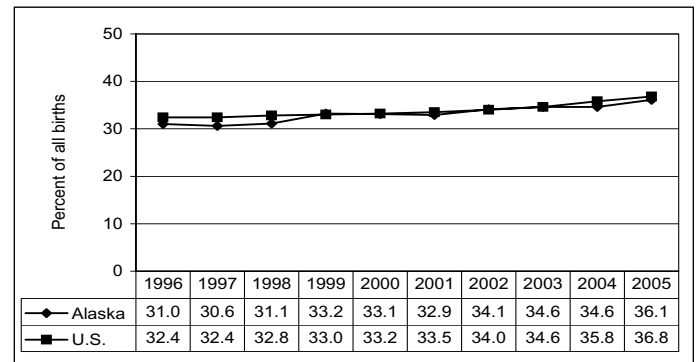


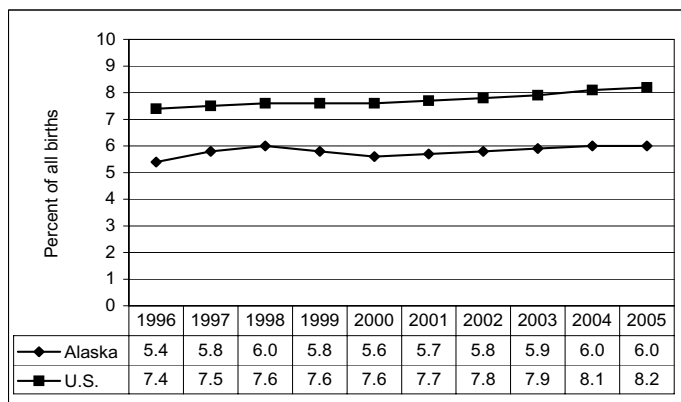
FIGURE 6 PERCENTAGE OF UNWED MOTHERS: U.S. AND ALASKA, 1996–2005



Low birthweight [live births that weigh less than 2,500 grams (5 pounds, 8 ounces)] is an important predictor of infant death. Infants born with low birthweight also are more likely to need extensive medical treatment. The incidence of low birthweight (Figure 5) babies born in Alaska during 2005 was 6.0 percent of total live births,

unchanged from 2004. Although the incidence of low birthweight births has been slowly increasing for both Alaska and the U.S. over the last decade, the Alaska low birthweight percentage is 26.8 percent lower than the preliminary U.S. percentage for 2005.

FIGURE 5 PERCENTAGE OF LOW BIRTHWEIGHT INFANTS: U.S. AND ALASKA, 1996–2005



Of the total births to Alaska residents during 2005, 36.1 percent were to unmarried women (Figure 6), an increase of 4.3 percent over the 34.6 percent reported in 2004.

The most popular boy's name in 2005 was Ethan and the most popular girl's name was Emma. Figure 7 below shows the ten most popular boys' and girls' names for the years 1995, 2000, and 2005.

FIGURE 7 MOST POPULAR BOYS' AND GIRLS' NAMES: ALASKA, 1995, 2000, 2005

Rank	Boys' Names			Girls' Names		
	1995	2000	2005	1995	2000	2005
1	Michael	Michael	Ethan	Samantha	Hannah	Emma
2	Jacob	Jacob	Jacob	Hannah	Madison	Madison
3	Brandon	William	Joshua	Jessica	Emily	Emily
4	Tyler	James	Michael	Sarah	Sarah	Isabella
5	Daniel	Joshua	Joseph	Ashley	Anna	Samantha
6	Austin	Brandon	William	Emily	Ashley	Hannah
7	Matthew	Andrew	Benjamin	Amanda	Alyssa	Abigail
8	James	Matthew	Logan	Kayla	Elizabeth	Olivia
9	John	Joseph	Daniel	Megan	Emma	Elizabeth
10	Joshua	Daniel	John	Jordan	Jessica	Anna

BIRTHS BY RESIDENCE AND RACE

The following tables of this chapter show annual occurrences of live births to Alaska residents during 2005 and for the three-year period 2003 through 2005.

Annual rates and three-year rates for the state as a whole, its 27 census areas, and 12 Native Regional Corporations are shown by race and residence of the mother. Natality statistics on the mother's age, marital status, education, birth facility, prenatal care, cesarean delivery, pre-term births, and low birth weight are presented.

The table for the statewide totals (Table 1) provides birth statistics for the white, black, Native, and Asian/Pacific Islander races. However, due to the low number of reportable events for some census areas or boroughs, birth outcomes by census area (borough) and Native Regional Corporation are only shown for the two predominant races in Alaska: Native and white.

Also, unknown values are not reported in these tables. Thus, the percentages for certain categories such as mother's age group may not add up to the total number of births.

Due to the way race information was collected in the Federal 2000 Census, population estimates by race beginning in 2000 are not comparable to previous population estimates. The Alaska Department of Labor has developed bridge estimates so that the federal population estimates by race in 2000 and later years will be comparable to previous years. Unfortunately, bridge estimates by census area by race are currently unavailable. If complete bridge estimates by census area by race are published, the online Annual Report will be updated. The following Web address is for the online Annual Report:

www.hss.state.ak.us/dph/bvs/data/default.htm.

TABLE 1 **SELECTED BIRTH STATISTICS REPORTED BY MOTHER'S RACE:**
ALASKA, 2005 AND 2003-2005

	TOTAL				WHITE				NATIVE			
	2005 NUMBER	2005 RATE	2003-2005 NUMBER	2003-2005 RATE	2005 NUMBER	2005 RATE	2003-2005 NUMBER	2003-2005 RATE	2005 NUMBER	2005 RATE	2003-2005 NUMBER	2003-2005 RATE
BIRTH RATES												
CRUDE BIRTH RATE ¹	10,453	15.8	30,875	15.7	6,431	13.3	19,296	13.4	2,704	23.0	7,741	22.3
TEEN BIRTH RATE²												
15-17	289	17.3	895	18.3	106	9.4	345	10.4	136	36.1	407	37.3
18-19	748	75.2	2,268	76.2	365	54.0	1,135	55.5	292	133.4	886	137.6
15-19	1,037	38.9	3,163	40.2	471	26.1	1,480	27.6	428	71.9	1,293	74.5
FERTILITY RATE ³	10,453	74.2	30,875	73.2	6,431	63.8	19,296	63.8	2,704	104.5	7,741	101.1
	TOTAL				WHITE				NATIVE			
	2005 NUMBER	2005 %	2003-2005 NUMBER	2003-2005 %	2005 NUMBER	2005 %	2003-2005 NUMBER	2003-2005 %	2005 NUMBER	2005 %	2003-2005 NUMBER	2003-2005 %
BIRTHS												
IN STATE	10,372	100.0	30,644	100.0	6,362	61.3	19,108	62.4	2,702	26.1	7,739	25.3
TO RESIDENTS	10,453	100.0	30,875	100.0	6,431	61.5	19,296	62.5	2,704	25.9	7,741	25.1
FACILITY												
HOSPITAL	9,776	93.5	29,015	94.0	5,844	90.9	17,689	91.7	2,657	98.3	7,621	98.4
BIRTHING CENTER	342	3.3	918	3.0	316	4.9	845	4.4	15	0.6	41	0.5
HOME	196	1.9	576	1.9	167	2.6	494	2.6	15	0.6	39	0.5
CLINIC	30	0.3	56	0.2	16	0.2	25	0.1	11	0.4	26	0.3
OUTSIDE ALASKA	109	1.0	310	1.0	88	1.4	243	1.3	6	0.2	14	0.2
MOTHER CHARACTERISTICS												
AGE GROUP												
<15	13	0.1	37	0.1	3	0.0	10	0.1	10	0.4	23	0.3
15-19	1,037	9.9	3,163	10.3	471	7.3	1,480	7.7	428	15.8	1,293	16.7
20-24	3,051	29.2	8,985	29.1	1,756	27.3	5,239	27.2	918	33.9	2,614	33.8
25-29	2,908	27.8	8,295	26.9	1,866	29.0	5,394	28.0	695	25.7	1,894	24.5
30-34	2,059	19.7	6,246	20.2	1,422	22.1	4,373	22.7	382	14.1	1,131	14.6
35-39	1,054	10.1	3,202	10.4	708	11.0	2,170	11.3	201	7.4	606	7.8
40-44	306	2.9	863	2.8	191	3.0	574	3.0	62	2.3	164	2.1
45+	20	0.2	67	0.2	10	0.2	45	0.2	8	0.3	16	0.2
REPORTED DRINKING	219	2.1	622	2.0	110	1.7	280	1.5	99	3.7	315	4.1
REPORTED SMOKING	1,675	16.1	5,006	16.4	712	11.1	2,260	11.8	843	31.3	2,429	31.5
UNWED	3,765	36.1	10,817	35.1	1,523	23.7	4,539	23.6	1,720	63.6	4,875	63.0
EDUCATION												
<12 YEARS	1,510	14.8	4,292	14.5	616	9.7	1,766	9.5	731	27.8	2,074	27.4
12 YEARS	4,322	42.3	12,400	41.8	2,352	37.2	6,787	36.5	1,413	53.7	4,071	53.8
12+ YEARS	4,395	43.0	12,967	43.7	3,352	53.0	10,032	54.0	489	18.6	1,417	18.7
PRENATAL CARE												
TRIMESTER CARE BEGAN												
1ST TRIMESTER	8,213	80.5	23,833	80.6	5,373	85.3	15,829	85.1	1,906	71.8	5,342	71.2
3RD TRIMESTER	458	4.5	1,338	4.5	212	3.4	696	3.7	162	6.1	446	5.9
NO PRENATAL CARE	41	0.4	130	0.5	14	0.2	53	0.3	20	0.8	53	0.7
APNCU INDEX												
ADEQUATE+	2,387	24.5	6,858	24.7	1,667	27.8	4,927	28.6	442	16.7	1,141	15.4
ADEQUATE	3,853	39.5	11,004	39.7	2,592	43.2	7,513	43.7	801	30.3	2,255	30.4
INTERMEDIATE	1,947	19.9	5,240	18.9	1,092	18.2	2,814	16.4	674	25.5	1,908	25.7
INADEQUATE	1,575	16.1	4,609	16.6	647	10.8	1,948	11.3	723	27.4	2,109	28.5
C-SECTION BIRTHS	2,294	22.3	6,620	21.6	1,607	25.4	4,716	24.7	317	11.8	931	12.1
PRE-TERM BIRTHS	1,124	10.8	3,311	10.8	623	9.7	1,887	9.8	323	12.0	927	12.0
LOW BIRTHWEIGHT	630	6.0	1,840	6.0	367	5.7	1,079	5.6	136	5.1	442	5.7

Continued =>

Note: Unknown responses are excluded from the denominator when calculating percentages.

¹ Crude birth rate per 1,000 population.

² Teen birth rate per 1,000 female population ages 15-17, 18-19, and 15-19, respectively.

³ Fertility rate per 1,000 female population ages 15-44.

TABLE 1 **SELECTED BIRTH STATISTICS REPORTED BY MOTHER'S RACE:**
ALASKA, 2005 AND 2003-2005 (Continued)

	TOTAL				BLACK				ASIAN/PI			
	2005 NUMBER	2005 RATE	2003-2005 NUMBER	2003-2005 RATE	2005 NUMBER	2005 RATE	2003-2005 NUMBER	2003-2005 RATE	2005 NUMBER	2005 RATE	2003-2005 NUMBER	2003-2005 RATE
BIRTH RATES												
CRUDE BIRTH RATE ¹	10,453	15.8	30,875	15.7	407	15.5	1,184	15.1	760	21.5	2,216	21.1
TEEN BIRTH RATE ²												
15-17	289	17.3	895	18.3	18	27.4	52	26.4	27	27.9	83	29.0
18-19	748	75.2	2,268	76.2	32	76.7	96	81.4	53	91.7	130	75.6
15-19	1,037	38.9	3,163	40.2	50	46.6	148	47.0	80	51.7	213	46.5
FERTILITY RATE ³	10,453	74.2	30,875	73.2	407	63.6	1,184	62.0	760	98.4	2,216	94.1

	TOTAL				BLACK				ASIAN/PI			
	2005 NUMBER	2005 %	2003-2005 NUMBER	2003-2005 %	2005 NUMBER	2005 %	2003-2005 NUMBER	2003-2005 %	2005 NUMBER	2005 %	2003-2005 NUMBER	2003-2005 %
BIRTHS												
IN STATE	10,372	100.0	30,644	100.0	397	3.8	1,173	3.8	762	7.3	2,213	7.2
TO RESIDENTS	10,453	100.0	30,875	100.0	407	3.9	1,184	3.8	760	7.3	2,216	7.2
FACILITY												
HOSPITAL	9,776	93.5	29,015	94.0	391	96.1	1,153	97.4	746	98.2	2,171	98.0
BIRTHING CENTER	342	3.3	918	3.0	3	0.7	8	0.7	7	0.9	19	0.9
HOME	196	1.9	576	1.9	2	0.5	6	0.5	6	0.8	17	0.8
CLINIC	30	0.3	56	0.2	0	0.0	0	0.0	0	0.0	1	0.0
OUTSIDE ALASKA	109	1.0	310	1.0	11	2.7	17	1.4	1	0.1	8	0.4
MOTHER CHARACTERISTICS												
AGE GROUP												
<15	13	0.1	37	0.1	0	0.0	1	0.1	0	0.0	3	0.1
15-19	1,037	9.9	3,163	10.3	50	12.3	148	12.5	80	10.5	213	9.6
20-24	3,051	29.2	8,985	29.1	152	37.3	460	38.9	185	24.4	557	25.2
25-29	2,908	27.8	8,295	26.9	109	26.8	307	26.0	195	25.7	584	26.4
30-34	2,059	19.7	6,246	20.2	63	15.5	168	14.2	160	21.1	494	22.3
35-39	1,054	10.1	3,202	10.4	25	6.1	82	6.9	99	13.0	268	12.1
40-44	306	2.9	863	2.8	8	2.0	17	1.4	39	5.1	90	4.1
45+	20	0.2	67	0.2	0	0.0	0	0.0	1	0.1	5	0.2
REPORTED DRINKING	219	2.1	622	2.0	3	0.8	9	0.8	3	0.4	11	0.5
REPORTED SMOKING	1,675	16.1	5,006	16.4	39	9.6	98	8.4	60	7.9	176	8.0
UNWED	3,765	36.1	10,817	35.1	212	52.1	550	46.5	257	33.9	709	32.1
EDUCATION												
<12 YEARS	1,510	14.8	4,292	14.5	54	13.6	148	13.1	91	12.1	260	12.4
12 YEARS	4,322	42.3	12,400	41.8	175	44.1	508	44.8	333	44.3	921	43.9
12+ YEARS	4,395	43.0	12,967	43.7	168	42.3	478	42.2	327	43.5	916	43.7
PRENATAL CARE												
TRIMESTER CARE BEGAN												
1ST TRIMESTER	8,213	80.5	23,833	80.6	318	83.0	910	83.7	516	70.6	1,491	73.1
3RD TRIMESTER	458	4.5	1,338	4.5	21	5.5	48	4.4	57	7.8	130	6.4
NO PRENATAL CARE	41	0.4	130	0.5	4	1.2	10	1.1	2	0.3	11	0.6
APNCU INDEX												
ADEQUATE+	2,387	24.5	6,858	24.7	89	25.9	266	28.1	158	23.5	443	24.1
ADEQUATE	3,853	39.5	11,004	39.7	148	43.1	391	41.2	268	39.9	724	39.3
INTERMEDIATE	1,947	19.9	5,240	18.9	59	17.2	158	16.7	104	15.5	306	16.6
INADEQUATE	1,575	16.1	4,609	16.6	47	13.7	133	14.0	142	21.1	368	20.0
C-SECTION BIRTHS	2,294	22.3	6,620	21.6	117	29.1	324	27.5	212	28.3	543	24.8
PRE-TERM BIRTHS	1,124	10.8	3,311	10.8	62	15.2	180	15.3	90	11.9	250	11.3
LOW BIRTHWEIGHT	630	6.0	1,840	6.0	58	14.3	135	11.4	53	7.0	143	6.5

Note: Unknown responses are excluded from the denominator when calculating percentages.

¹ Crude birth rate per 1,000 population.

² Teen birth rate per 1,000 female population ages 15-17, 18-19, and 15-19, respectively.

³ Fertility rate per 1,000 female population ages 15-44.

TABLE 2 **SELECTED BIRTH STATISTICS REPORTED BY MOTHER'S RACE:**
2005 AND 2003–2005
ALEUTIANS EAST BOROUGH

	TOTAL				WHITE				NATIVE			
	2005 NUMBER	2005 RATE*	2003–2005 NUMBER	2003–2005 RATE*	2005 NUMBER	2005 RATE*	2003–2005 NUMBER	2003–2005 RATE*	2005 NUMBER	2005 RATE*	2003–2005 NUMBER	2003–2005 RATE*
BIRTH RATES												
CRUDE BIRTH RATE ¹	21	7.9	52	6.5	2	2.1*	9		15	15.3	36	
TEEN BIRTH RATE ²												
15–17	0	0.0	0	0.0	0		0		0		0	
18–19	1	55.6*	2	36.4*	0		0		1		2	
15–19	1	19.2*	2	13.2*	0	0.0	0		1	23.8*	2	
FERTILITY RATE ³	21	43.8	52	35.9	2	13.3*	9		15	65.5	36	
	TOTAL				WHITE				NATIVE			
	2005 NUMBER	2005 %	2003–2005 NUMBER	2003–2005 %	2005 NUMBER	2005 %	2003–2005 NUMBER	2003–2005 %	2005 NUMBER	2005 %	2003–2005 NUMBER	2003–2005 %
BIRTHS												
WITHIN AREA	0	0.0	0	0.0	0	0.0	0	0.0	0	0.0	0	0.0
TO RESIDENTS	21	100.0	52	100.0	2	9.5	9	17.3	15	71.4	36	69.2
FACILITY												
HOSPITAL	19	90.5	49	94.2	0	0.0	7	77.8	15	100.0	36	100.0
BIRTHING CENTER	0	0.0	0	0.0	0	0.0	0	0.0	0	0.0	0	0.0
HOME	0	0.0	0	0.0	0	0.0	0	0.0	0	0.0	0	0.0
OTHER	0	0.0	0	0.0	0	0.0	0	0.0	0	0.0	0	0.0
OUTSIDE ALASKA	2	9.5	3	5.8	2	100.0	2	22.2	0	0.0	0	0.0
MOTHER CHARACTERISTICS												
AGE GROUP												
<15	0	0.0	0	0.0	**		0	0.0	**		0	0.0
15–19	1	5.0	2	3.9	**		0	0.0	**		2	5.6
20–24	5	25.0	18	35.3	**		2	25.0	**		15	41.7
25–29	6	30.0	12	23.5	**		0	0.0	**		11	30.6
30–34	5	25.0	11	21.6	**		5	62.5	**		4	11.1
35–39	1	5.0	5	9.8	**		1	12.5	**		2	5.6
40–44	2	10.0	3	5.9	**		0	0.0	**		2	5.6
45+	0	0.0	0	0.0	**		0	0.0	**		0	0.0
REPORTED DRINKING	0	0.0	1	2.0	**		0	0.0	**		1	2.8
REPORTED SMOKING	10	47.6	18	34.6	**		1	11.1	**		15	41.7
UNWED	10	47.6	29	55.8	**		4	44.4	**		20	55.6
EDUCATION												
<12 YEARS	0	0.0	5	10.0	**		2	28.6	**		2	5.6
12 YEARS	13	61.9	33	66.0	**		2	28.6	**		26	72.2
12+ YEARS	8	38.1	12	24.0	**		3	42.9	**		8	22.2
PRENATAL CARE												
TRIMESTER CARE BEGAN												
1ST TRIMESTER	19	90.5	41	82.0	**		7	87.5	**		30	83.3
3RD TRIMESTER	2	9.5	3	6.0	**		0	0.0	**		3	8.3
NO PRENATAL CARE	0	0.0	0	0.0	**		0	0.0	**		0	0.0
APNCU INDEX												
ADEQUATE+	3	15.0	21	45.7	**		1	20.0	**		19	52.8
ADEQUATE	11	55.0	15	32.6	**		2	40.0	**		10	27.8
INTERMEDIATE	3	15.0	5	10.9	**		2	40.0	**		2	5.6
INADEQUATE	3	15.0	5	10.9	**		0	0.0	**		5	13.9
C-SECTION BIRTHS	3	14.3	4	7.7	**		0	0.0	**		3	8.3
PRE-TERM BIRTHS	1	4.8	3	5.8	**		0	0.0	**		1	2.8
LOW BIRTHWEIGHT	1	4.8	3	5.8	**		0	0.0	**		2	5.6

Note: Unknown responses are excluded from the denominator when calculating percentages.

¹ Crude birth rate per 1,000 population. Population estimates by race by census area are inconsistent. Therefore, three-year rates by race are not reported.

² Teen birth rate per 1,000 female population ages 15–17, 18–19, and 15–19, respectively.

³ Fertility rate per 1,000 female population ages 15–44. Population estimates by race by census area are inconsistent. Therefore, three-year rates by race are not reported.

* Rates based on fewer than 10 occurrences are statistically unreliable and should be used with caution.

** Data suppressed for confidentiality concerns if total births to residents, by either race, is less than five observations.

**TABLE 2 SELECTED BIRTH STATISTICS REPORTED BY MOTHER'S RACE:
2005 AND 2003-2005
ALEUTIANS WEST CENSUS AREA**

	TOTAL				WHITE				NATIVE			
	2005 NUMBER	2005 RATE*	2003-2005 NUMBER	2003-2005 RATE*	2005 NUMBER	2005 RATE*	2003-2005 NUMBER	2003-2005 RATE*	2005 NUMBER	2005 RATE*	2003-2005 NUMBER	2003-2005 RATE*
BIRTH RATES												
CRUDE BIRTH RATE ¹	41	7.8	109	6.9	17	6.6	51		17	17.1	35	
TEEN BIRTH RATE²												
15-17	0	0.0	1	5.3*	0		0		0		0	
18-19	0	0.0	3	30.3*	0		0		0		3	
15-19	0	0.0	4	13.9*	0	0.0	0		0	0.0	3	
FERTILITY RATE ³	41	44.4	109	38.8	17	38.5	51		17	85.4	35	

	TOTAL				WHITE				NATIVE			
	2005 NUMBER	2005 %	2003-2005 NUMBER	2003-2005 %	2005 NUMBER	2005 %	2003-2005 NUMBER	2003-2005 %	2005 NUMBER	2005 %	2003-2005 NUMBER	2003-2005 %
BIRTHS												
WITHIN AREA	0	0.0	1	100.0	0	0.0	0	0.0	0	0.0	0	0.0
TO RESIDENTS	41	100.0	109	100.0	17	41.5	51	46.8	17	41.5	35	32.1
FACILITY												
HOSPITAL	30	73.2	71	65.1	6	35.3	19	37.3	17	100.0	35	100.0
BIRTHING CENTER	0	0.0	2	1.8	0	0.0	2	3.9	0	0.0	0	0.0
HOME	0	0.0	1	0.9	0	0.0	1	2.0	0	0.0	0	0.0
OTHER	0	0.0	1	0.9	0	0.0	0	0.0	0	0.0	0	0.0
OUTSIDE ALASKA	11	26.8	34	31.2	11	64.7	29	56.9	0	0.0	0	0.0
MOTHER CHARACTERISTICS												
AGE GROUP												
<15	0	0.0	0	0.0	0	0.0	0	0.0	0	0.0	0	0.0
15-19	0	0.0	4	3.7	0	0.0	0	0.0	0	0.0	3	8.6
20-24	14	34.1	31	28.7	5	29.4	13	25.5	7	41.2	13	37.1
25-29	11	26.8	26	24.1	4	23.5	11	21.6	6	35.3	8	22.9
30-34	9	22.0	31	28.7	5	29.4	18	35.3	2	11.8	6	17.1
35-39	4	9.8	10	9.3	3	17.6	7	13.7	1	5.9	3	8.6
40-44	3	7.3	6	5.6	0	0.0	2	3.9	1	5.9	2	5.7
45+	0	0.0	0	0.0	0	0.0	0	0.0	0	0.0	0	0.0
REPORTED DRINKING	0	0.0	5	6.2	0	0.0	0	0.0	0	0.0	4	11.4
REPORTED SMOKING	6	15.4	15	14.9	1	6.7	2	4.2	5	29.4	13	37.1
UNWED	20	50.0	43	41.7	6	37.5	13	26.5	12	70.6	23	65.7
EDUCATION												
<12 YEARS	6	14.6	11	10.8	0	0.0	0	0.0	5	29.4	8	23.5
12 YEARS	20	48.8	54	52.9	8	47.1	25	52.1	8	47.1	19	55.9
12+ YEARS	15	36.6	37	36.3	9	52.9	23	47.9	4	23.5	7	20.6
PRENATAL CARE												
TRIMESTER CARE BEGAN												
1ST TRIMESTER	33	86.8	83	84.7	13	86.7	38	84.4	15	88.2	32	91.4
3RD TRIMESTER	0	0.0	4	4.1	0	0.0	3	6.7	0	0.0	0	0.0
NO PRENATAL CARE	0	0.0	1	1.1	0	0.0	0	0.0	0	0.0	0	0.0
APNCU INDEX												
ADEQUATE+	11	31.4	27	28.7	2	15.4	7	16.7	8	47.1	18	51.4
ADEQUATE	12	34.3	37	39.4	6	46.2	20	47.6	4	23.5	11	31.4
INTERMEDIATE	7	20.0	15	16.0	3	23.1	9	21.4	3	17.6	3	8.6
INADEQUATE	5	14.3	15	16.0	2	15.4	6	14.3	2	11.8	3	8.6
C-SECTION BIRTHS	10	25.6	23	22.8	4	26.7	12	26.1	4	23.5	5	14.3
PRE-TERM BIRTHS	5	12.2	11	10.2	3	17.6	4	7.8	1	5.9	4	11.4
LOW BIRTHWEIGHT	2	4.9	6	5.6	1	5.9	1	2.0	0	0.0	3	8.6

Note: Unknown responses are excluded from the denominator when calculating percentages.

¹ Crude birth rate per 1,000 population. Population estimates by race by census area are inconsistent. Therefore, three-year rates by race are not reported.

² Teen birth rate per 1,000 female population ages 15-17, 18-19, and 15-19, respectively.

³ Fertility rate per 1,000 female population ages 15-44. Population estimates by race by census area are inconsistent. Therefore, three-year rates by race are not reported.

* Rates based on fewer than 10 occurrences are statistically unreliable and should be used with caution.

** Data suppressed for confidentiality concerns if total births to residents, by either race, is less than five observations.

**TABLE 2 SELECTED BIRTH STATISTICS REPORTED BY MOTHER'S RACE:
2005 AND 2003-2005
MUNICIPALITY OF ANCHORAGE**

	TOTAL				WHITE				NATIVE			
	2005 NUMBER	2005 RATE*	2003-2005 NUMBER	2003-2005 RATE*	2005 NUMBER	2005 RATE*	2003-2005 NUMBER	2003-2005 RATE*	2005 NUMBER	2005 RATE*	2003-2005 NUMBER	2003-2005 RATE*
BIRTH RATES												
CRUDE BIRTH RATE ¹	4,230	15.2	12,898	15.6	2,701	12.6	8,423		648	22.7	1,945	
TEEN BIRTH RATE ²												
15-17	119	18.9	355	19.2	50		150		32		97	
18-19	282	66.9	839	66.6	146		443		63		208	
15-19	401	38.1	1,194	38.4	196	25.5	593		95	77.6	305	
FERTILITY RATE ³	4,230	68.2	12,898	69.4	2,701	57.5	8,423		648	90.8	1,945	
BIRTHS												
	2005 NUMBER	2005 %	2003-2005 NUMBER	2003-2005 %	2005 NUMBER	2005 %	2003-2005 NUMBER	2003-2005 %	2005 NUMBER	2005 %	2003-2005 NUMBER	2003-2005 %
WITHIN AREA	5,565	100.0	16,612	100.0	3,215	57.8	9,847	59.3	1,403	25.2	4,061	24.4
TO RESIDENTS	4,230	100.0	12,898	100.0	2,701	63.9	8,423	65.3	648	15.3	1,945	15.1
FACILITY												
HOSPITAL	4,058	95.9	12,416	96.3	2,553	94.5	7,997	94.9	641	98.9	1,925	99.0
BIRTHING CENTER	89	2.1	232	1.8	80	3.0	215	2.6	3	0.5	6	0.3
HOME	60	1.4	189	1.5	50	1.9	164	1.9	3	0.5	9	0.5
OTHER	10	0.2	10	0.1	8	0.3	8	0.1	1	0.2	1	0.1
OUTSIDE ALASKA	13	0.3	51	0.4	10	0.4	39	0.5	0	0.0	4	0.2
MOTHER CHARACTERISTICS												
AGE GROUP												
<15	3	0.1	11	0.1	2	0.1	3	0.0	1	0.2	4	0.2
15-19	401	9.5	1,194	9.3	196	7.3	593	7.0	95	14.7	305	15.7
20-24	1,205	28.5	3,683	28.6	713	26.4	2,237	26.6	236	36.4	683	35.1
25-29	1,130	26.7	3,417	26.5	738	27.3	2,275	27.0	165	25.5	502	25.8
30-34	911	21.5	2,791	21.6	652	24.1	2,039	24.2	86	13.3	274	14.1
35-39	450	10.6	1,410	10.9	319	11.8	1,012	12.0	45	6.9	127	6.5
40-44	123	2.9	362	2.8	76	2.8	242	2.9	19	2.9	47	2.4
45+	6	0.1	28	0.2	4	0.1	21	0.2	1	0.2	3	0.2
REPORTED DRINKING	99	2.4	250	2.0	70	2.6	165	2.0	21	3.3	67	3.5
REPORTED SMOKING	527	12.5	1,655	13.0	253	9.4	843	10.1	184	28.5	571	29.5
UNWED	1,471	34.8	4,318	33.5	653	24.2	2,036	24.2	414	63.9	1,219	62.7
EDUCATION												
<12 YEARS	604	14.5	1,666	13.6	268	10.0	735	9.2	197	30.7	575	29.9
12 YEARS	1,502	36.1	4,552	37.1	857	32.1	2,664	33.3	283	44.1	844	43.9
12+ YEARS	2,058	49.4	6,042	49.3	1,545	57.9	4,607	57.5	162	25.2	502	26.1
PRENATAL CARE												
TRIMESTER CARE BEGAN												
1ST TRIMESTER	3,428	83.4	10,307	84.7	2,317	87.4	7,066	88.1	508	79.9	1,537	80.7
3RD TRIMESTER	199	4.8	487	4.0	105	4.0	281	3.5	24	3.8	60	3.2
NO PRENATAL CARE	17	0.4	57	0.5	2	0.1	21	0.3	9	1.4	17	0.9
APNCU INDEX												
ADEQUATE+	988	26.2	2,968	27.6	694	28.5	2,182	31.3	106	16.8	250	13.4
ADEQUATE	1,561	41.3	4,555	42.3	1,056	43.4	3,073	44.0	236	37.5	760	40.6
INTERMEDIATE	725	19.2	1,892	17.6	443	18.2	1,081	15.5	168	26.7	518	27.7
INADEQUATE	504	13.3	1,350	12.5	240	9.9	645	9.2	120	19.0	342	18.3
C-SECTION BIRTHS	1,014	24.4	3,017	23.6	701	26.5	2,131	25.6	67	10.4	233	12.0
PRE-TERM BIRTHS	483	11.4	1,426	11.1	278	10.3	894	10.7	67	10.4	185	9.5
LOW BIRTHWEIGHT	291	6.9	836	6.5	158	5.9	498	5.9	46	7.1	123	6.3

Note: Unknown responses are excluded from the denominator when calculating percentages.

¹ Crude birth rate per 1,000 population. Population estimates by race by census area are inconsistent. Therefore, three-year rates by race are not reported.

² Teen birth rate per 1,000 female population ages 15-17, 18-19, and 15-19, respectively.

³ Fertility rate per 1,000 female population ages 15-44. Population estimates by race by census area are inconsistent. Therefore, three-year rates by race are not reported.

* Rates based on fewer than 10 occurrences are statistically unreliable and should be used with caution.

** Data suppressed for confidentiality concerns if total births to residents, by either race, is less than five observations.

**TABLE 2 SELECTED BIRTH STATISTICS REPORTED BY MOTHER'S RACE:
2005 AND 2003-2005
BETHEL CENSUS AREA**

	TOTAL				WHITE				NATIVE			
	2005 NUMBER	2005 RATE*	2003-2005 NUMBER	2003-2005 RATE*	2005 NUMBER	2005 RATE*	2003-2005 NUMBER	2003-2005 RATE*	2005 NUMBER	2005 RATE*	2003-2005 NUMBER	2003-2005 RATE*
BIRTH RATES												
CRUDE BIRTH RATE ¹	434	25.4	1,276	25.1	25	9.1	70		402	28.8	1189	
TEEN BIRTH RATE ²												
15-17	18	34.0	60	39.4	1		1		16		57	
18-19	37	121.7	122	136.8	0		1		37		121	
15-19	55	66.0	182	75.4	1	10.6 *	2		53	73.2	178	
FERTILITY RATE ³	434	126.8	1,276	124.6	25	47.2	70		402	141.9	1,189	

	TOTAL				WHITE				NATIVE			
	2005 NUMBER	2005 %	2003-2005 NUMBER	2003-2005 %	2005 NUMBER	2005 %	2003-2005 NUMBER	2003-2005 %	2005 NUMBER	2005 %	2003-2005 NUMBER	2003-2005 %
BIRTHS												
WITHIN AREA	441	100.0	1,213	100.0	7	1.6	18	1.5	432	98.0	1,189	98.0
TO RESIDENTS	434	100.0	1,276	100.0	25	5.8	70	5.5	402	92.6	1,189	93.2
FACILITY												
HOSPITAL	424	97.7	1,248	97.8	20	80.0	59	84.3	400	99.5	1,176	98.9
BIRTHING CENTER	1	0.2	2	0.2	1	4.0	2	2.9	0	0.0	0	0.0
HOME	0	0.0	4	0.3	0	0.0	1	1.4	0	0.0	3	0.3
OTHER	3	0.7	11	0.9	0	0.0	0	0.0	2	0.5	9	0.8
OUTSIDE ALASKA	6	1.4	11	0.9	4	16.0	8	11.4	0	0.0	1	0.1
MOTHER CHARACTERISTICS												
AGE GROUP												
<15	3	0.7	4	0.3	0	0.0	0	0.0	3	0.7	4	0.3
15-19	55	12.7	182	14.3	1	4.0	2	2.9	53	13.2	178	15.0
20-24	122	28.1	380	29.8	2	8.0	8	11.4	118	29.4	368	31.0
25-29	120	27.6	309	24.2	9	36.0	20	28.6	111	27.6	287	24.1
30-34	75	17.3	220	17.2	9	36.0	25	35.7	64	15.9	189	15.9
35-39	45	10.4	140	11.0	4	16.0	12	17.1	39	9.7	125	10.5
40-44	10	2.3	33	2.6	0	0.0	3	4.3	10	2.5	30	2.5
45+	4	0.9	8	0.6	0	0.0	0	0.0	4	1.0	8	0.7
REPORTED DRINKING	14	3.3	50	4.0	1	4.8	1	1.5	12	3.0	48	4.1
REPORTED SMOKING	67	15.6	210	16.6	2	8.3	5	7.2	63	15.8	203	17.2
UNWED	213	49.2	629	49.3	3	12.0	8	11.4	207	51.5	615	51.7
EDUCATION												
<12 YEARS	99	23.5	304	24.5	1	4.0	1	1.4	97	24.9	302	26.1
12 YEARS	254	60.3	747	60.3	8	32.0	15	21.7	244	62.6	728	63.0
12+ YEARS	68	16.2	188	15.2	16	64.0	53	76.8	49	12.6	125	10.8
PRENATAL CARE												
TRIMESTER CARE BEGAN												
1ST TRIMESTER	249	58.6	715	58.9	19	79.2	56	82.4	227	57.2	649	57.3
3RD TRIMESTER	46	10.8	109	9.0	2	8.3	2	2.9	44	11.1	107	9.4
NO PRENATAL CARE	3	0.7	9	0.7	1	4.2	1	1.5	1	0.3	6	0.5
APNCU INDEX												
ADEQUATE+	48	11.3	144	12.0	4	16.7	14	21.5	44	11.1	129	11.5
ADEQUATE	76	17.9	231	19.2	11	45.8	27	41.5	64	16.2	202	18.0
INTERMEDIATE	112	26.4	310	25.8	3	12.5	11	16.9	107	27.1	295	26.2
INADEQUATE	188	44.3	518	43.1	6	25.0	13	20.0	180	45.6	499	44.4
C-SECTION BIRTHS	46	10.7	132	10.4	6	25.0	17	24.6	40	10.0	113	9.6
PRE-TERM BIRTHS	67	15.5	201	15.8	4	16.0	9	12.9	61	15.2	190	16.0
LOW BIRTHWEIGHT	19	4.4	78	6.2	2	8.3	3	4.3	15	3.8	73	6.2

Note: Unknown responses are excluded from the denominator when calculating percentages.

¹ Crude birth rate per 1,000 population. Population estimates by race by census area are inconsistent. Therefore, three-year rates by race are not reported.

² Teen birth rate per 1,000 female population ages 15-17, 18-19, and 15-19, respectively.

³ Fertility rate per 1,000 female population ages 15-44. Population estimates by race by census area are inconsistent. Therefore, three-year rates by race are not reported.

* Rates based on fewer than 10 occurrences are statistically unreliable and should be used with caution.

** Data suppressed for confidentiality concerns if total births to residents, by either race, is less than five observations.

**TABLE 2 SELECTED BIRTH STATISTICS REPORTED BY MOTHER'S RACE:
2005 AND 2003-2005
BRISTOL BAY BOROUGH**

	TOTAL				WHITE				NATIVE			
	2005 NUMBER	2005 RATE*	2003-2005 NUMBER	2003-2005 RATE*	2005 NUMBER	2005 RATE*	2003-2005 NUMBER	2003-2005 RATE*	2005 NUMBER	2005 RATE*	2003-2005 NUMBER	2003-2005 RATE*
BIRTH RATES												
CRUDE BIRTH RATE ¹	11	10.3	35	10.6	6	10.5*	18		4	8.6*	14	
TEEN BIRTH RATE ²												
15-17	0	0.0	1	12.3*	0		0		0		1	
18-19	2	125.0*	3	55.6*	0		0		2		3	
15-19	2	48.8*	4	29.6*	0	0.0	0		2	133.3*	4	
FERTILITY RATE ³	11	56.1	35	55.6	6	54.1*	18		4	54.8*	14	

	TOTAL				WHITE				NATIVE			
	2005 NUMBER	2005 %	2003-2005 NUMBER	2003-2005 %	2005 NUMBER	2005 %	2003-2005 NUMBER	2003-2005 %	2005 NUMBER	2005 %	2003-2005 NUMBER	2003-2005 %
BIRTHS												
WITHIN AREA	0	0.0	0	0.0	0	0.0	0	0.0	0	0.0	0	0.0
TO RESIDENTS	11	100.0	35	100.0	6	54.5	18	51.4	4	36.4	14	40.0
FACILITY												
HOSPITAL	10	90.9	33	94.3	5	83.3	16	88.9	4	100.0	14	100.0
BIRTHING CENTER	0	0.0	0	0.0	0	0.0	0	0.0	0	0.0	0	0.0
HOME	0	0.0	0	0.0	0	0.0	0	0.0	0	0.0	0	0.0
OTHER	0	0.0	0	0.0	0	0.0	0	0.0	0	0.0	0	0.0
OUTSIDE ALASKA	1	9.1	2	5.7	1	16.7	2	11.1	0	0.0	0	0.0
MOTHER CHARACTERISTICS												
AGE GROUP												
<15	0	0.0	0	0.0	**		0	0.0	**		0	0.0
15-19	2	18.2	4	11.4	**		0	0.0	**		4	28.6
20-24	7	63.6	11	31.4	**		7	38.9	**		2	14.3
25-29	0	0.0	8	22.9	**		4	22.2	**		4	28.6
30-34	2	18.2	6	17.1	**		4	22.2	**		2	14.3
35-39	0	0.0	5	14.3	**		3	16.7	**		1	7.1
40-44	0	0.0	1	2.9	**		0	0.0	**		1	7.1
45+	0	0.0	0	0.0	**		0	0.0	**		0	0.0
REPORTED DRINKING	0	0.0	0	0.0	**		0	0.0	**		0	0.0
REPORTED SMOKING	3	27.3	8	22.9	**		3	16.7	**		5	35.7
UNWED	3	27.3	12	34.3	**		4	22.2	**		8	57.1
EDUCATION												
<12 YEARS	1	9.1	2	6.3	**		0	0.0	**		2	14.3
12 YEARS	7	63.6	15	46.9	**		6	40.0	**		8	57.1
12+ YEARS	3	27.3	15	46.9	**		9	60.0	**		4	28.6
PRENATAL CARE												
TRIMESTER CARE BEGAN												
1ST TRIMESTER	9	81.8	29	85.3	**		14	82.4	**		12	85.7
3RD TRIMESTER	0	0.0	1	2.9	**		1	5.9	**		0	0.0
NO PRENATAL CARE	0	0.0	0	0.0	**		0	0.0	**		0	0.0
APNCU INDEX												
ADEQUATE+	2	18.2	3	8.8	**		2	11.8	**		1	7.1
ADEQUATE	4	36.4	11	32.4	**		6	35.3	**		4	28.6
INTERMEDIATE	3	27.3	15	44.1	**		7	41.2	**		6	42.9
INADEQUATE	2	18.2	5	14.7	**		2	11.8	**		3	21.4
C-SECTION BIRTHS	2	18.2	6	17.6	**		3	17.6	**		2	14.3
PRE-TERM BIRTHS	0	0.0	4	11.4	**		1	5.6	**		3	21.4
LOW BIRTHWEIGHT	0	0.0	2	5.7	**		0	0.0	**		2	14.3

Note: Unknown responses are excluded from the denominator when calculating percentages.

¹ Crude birth rate per 1,000 population. Population estimates by race by census area are inconsistent. Therefore, three-year rates by race are not reported.

² Teen birth rate per 1,000 female population ages 15-17, 18-19, and 15-19, respectively.

³ Fertility rate per 1,000 female population ages 15-44. Population estimates by race by census area are inconsistent. Therefore, three-year rates by race are not reported.

* Rates based on fewer than 10 occurrences are statistically unreliable and should be used with caution.

** Data suppressed for confidentiality concerns if total births to residents, by either race, is less than five observations.

**TABLE 2 SELECTED BIRTH STATISTICS REPORTED BY MOTHER'S RACE:
2005 AND 2003-2005
DENALI BOROUGH**

	TOTAL				WHITE				NATIVE			
	2005 NUMBER	2005 RATE*	2003-2005 NUMBER	2003-2005 RATE*	2005 NUMBER	2005 RATE*	2003-2005 NUMBER	2003-2005 RATE*	2005 NUMBER	2005 RATE*	2003-2005 NUMBER	2003-2005 RATE*
BIRTH RATES												
CRUDE BIRTH RATE ¹	12	6.6	52	9.3	11	7.0	46		1	6.0 *	2	
TEEN BIRTH RATE ²												
15-17	0	0.0	0	0.0	0		0		0		0	
18-19	0	0.0	4	75.5 *	0		3		0		0	
15-19	0	0.0	4	22.6 *	0	0.0	3		0	0.0	0	
FERTILITY RATE ³	12	34.8	52	48.0	11	37.9	46		1	33.3 *	2	

	TOTAL				WHITE				NATIVE			
	2005 NUMBER	2005 %	2003-2005 NUMBER	2003-2005 %	2005 NUMBER	2005 %	2003-2005 NUMBER	2003-2005 %	2005 NUMBER	2005 %	2003-2005 NUMBER	2003-2005 %
BIRTHS												
WITHIN AREA	0	0.0	0	0.0	0	0.0	0	0.0	0	0.0	0	0.0
TO RESIDENTS	12	100.0	52	100.0	11	91.7	46	88.5	1	8.3	2	3.8
FACILITY												
HOSPITAL	11	91.7	50	96.2	10	90.9	44	95.7	1	100.0	2	100.0
BIRTHING CENTER	0	0.0	1	1.9	0	0.0	1	2.2	0	0.0	0	0.0
HOME	0	0.0	0	0.0	0	0.0	0	0.0	0	0.0	0	0.0
OTHER	0	0.0	0	0.0	0	0.0	0	0.0	0	0.0	0	0.0
OUTSIDE ALASKA	1	8.3	1	1.9	1	9.1	1	2.2	0	0.0	0	0.0
MOTHER CHARACTERISTICS												
AGE GROUP												
<15	0	0.0	0	0.0	**		**	**	**		**	**
15-19	0	0.0	4	7.7	**		**	**	**		**	**
20-24	1	8.3	8	15.4	**		**	**	**		**	**
25-29	4	33.3	15	28.8	**		**	**	**		**	**
30-34	4	33.3	17	32.7	**		**	**	**		**	**
35-39	3	25.0	8	15.4	**		**	**	**		**	**
40-44	0	0.0	0	0.0	**		**	**	**		**	**
45+	0	0.0	0	0.0	**		**	**	**		**	**
REPORTED DRINKING	0	0.0	0	0.0	**		**	**	**		**	**
REPORTED SMOKING	1	8.3	5	9.6	**		**	**	**		**	**
UNWED	2	16.7	6	11.5	**		**	**	**		**	**
EDUCATION												
<12 YEARS	0	0.0	4	8.2	**		**	**	**		**	**
12 YEARS	4	36.4	16	32.7	**		**	**	**		**	**
12+ YEARS	7	63.6	29	59.2	**		**	**	**		**	**
PRENATAL CARE												
TRIMESTER CARE BEGAN												
1ST TRIMESTER	9	75.0	40	78.4	**		**	**	**		**	**
3RD TRIMESTER	0	0.0	0	0.0	**		**	**	**		**	**
NO PRENATAL CARE	0	0.0	0	0.0	**		**	**	**		**	**
APNCU INDEX												
ADEQUATE+	1	8.3	5	10.0	**		**	**	**		**	**
ADEQUATE	7	58.3	17	34.0	**		**	**	**		**	**
INTERMEDIATE	3	25.0	19	38.0	**		**	**	**		**	**
INADEQUATE	1	8.3	9	18.0	**		**	**	**		**	**
C-SECTION BIRTHS	4	33.3	11	21.2	**		**	**	**		**	**
PRE-TERM BIRTHS	1	8.3	3	5.8	**		**	**	**		**	**
LOW BIRTHWEIGHT	0	0.0	2	3.8	**		**	**	**		**	**

Note: Unknown responses are excluded from the denominator when calculating percentages.

¹ Crude birth rate per 1,000 population. Population estimates by race by census area are inconsistent. Therefore, three-year rates by race are not reported.

² Teen birth rate per 1,000 female population ages 15-17, 18-19, and 15-19, respectively.

³ Fertility rate per 1,000 female population ages 15-44. Population estimates by race by census area are inconsistent. Therefore, three-year rates by race are not reported.

* Rates based on fewer than 10 occurrences are statistically unreliable and should be used with caution.

** Data suppressed for confidentiality concerns if total births to residents, by either race, is less than five observations.

**TABLE 2 SELECTED BIRTH STATISTICS REPORTED BY MOTHER'S RACE:
2005 AND 2003-2005
DILLINGHAM CENSUS AREA**

	TOTAL				WHITE				NATIVE			
	2005 NUMBER	2005 RATE*	2003-2005 NUMBER	2003-2005 RATE*	2005 NUMBER	2005 RATE*	2003-2005 NUMBER	2003-2005 RATE*	2005 NUMBER	2005 RATE*	2003-2005 NUMBER	2003-2005 RATE*
BIRTH RATES												
CRUDE BIRTH RATE ¹	95	19.8	269	18.4	10	8.2	33		84	24.5	234	
TEEN BIRTH RATE ²												
15-17	1	5.5 *	9	17.6 *	0		0		1		9	
18-19	11	152.8	29	138.8	1		2		10		27	
15-19	12	47.4	38	52.7	1	30.3 *	2		11	50.5	36	
FERTILITY RATE ³	95	98.7	269	91.6	10	42.4	33		84	120.5	234	

	TOTAL				WHITE				NATIVE			
	2005 NUMBER	2005 %	2003-2005 NUMBER	2003-2005 %	2005 NUMBER	2005 %	2003-2005 NUMBER	2003-2005 %	2005 NUMBER	2005 %	2003-2005 NUMBER	2003-2005 %
BIRTHS												
WITHIN AREA	57	100.0	160	100.0	4	7.0	18	11.3	52	91.2	141	88.1
TO RESIDENTS	95	100.0	269	100.0	10	10.5	33	12.3	84	88.4	234	87.0
FACILITY												
HOSPITAL	95	100.0	263	97.8	10	100.0	28	84.8	84	100.0	233	99.6
BIRTHING CENTER	0	0.0	1	0.4	0	0.0	0	0.0	0	0.0	1	0.4
HOME	0	0.0	2	0.7	0	0.0	2	6.1	0	0.0	0	0.0
OTHER	0	0.0	0	0.0	0	0.0	0	0.0	0	0.0	0	0.0
OUTSIDE ALASKA	0	0.0	3	1.1	0	0.0	3	9.1	0	0.0	0	0.0
MOTHER CHARACTERISTICS												
AGE GROUP												
<15	0	0.0	0	0.0	0	0.0	0	0.0	0	0.0	0	0.0
15-19	12	12.6	38	14.1	1	10.0	2	6.1	11	13.1	36	15.4
20-24	27	28.4	73	27.1	2	20.0	6	18.2	25	29.8	67	28.6
25-29	29	30.5	70	26.0	3	30.0	10	30.3	25	29.8	59	25.2
30-34	11	11.6	41	15.2	1	10.0	9	27.3	10	11.9	31	13.2
35-39	12	12.6	35	13.0	1	10.0	3	9.1	11	13.1	32	13.7
40-44	3	3.2	11	4.1	2	20.0	3	9.1	1	1.2	8	3.4
45+	1	1.1	1	0.4	0	0.0	0	0.0	1	1.2	1	0.4
REPORTED DRINKING	2	2.1	10	3.7	0	0.0	1	3.1	2	2.4	9	3.8
REPORTED SMOKING	42	44.2	96	35.7	2	20.0	4	12.1	40	47.6	92	39.3
UNWED	47	49.5	131	48.7	3	30.0	4	12.1	44	52.4	127	54.3
EDUCATION												
<12 YEARS	22	23.4	54	20.2	1	10.0	1	3.0	21	25.3	53	22.8
12 YEARS	51	54.3	138	51.7	4	40.0	9	27.3	47	56.6	129	55.6
12+ YEARS	21	22.3	75	28.1	5	50.0	23	69.7	15	18.1	50	21.6
PRENATAL CARE												
TRIMESTER CARE BEGAN												
1ST TRIMESTER	75	79.8	201	75.0	10	100.0	28	84.8	64	77.1	171	73.4
3RD TRIMESTER	2	2.1	12	4.5	0	0.0	0	0.0	2	2.4	12	5.2
NO PRENATAL CARE	1	1.1	1	0.4	0	0.0	0	0.0	1	1.2	1	0.4
APNCU INDEX												
ADEQUATE+	13	13.7	51	19.0	2	20.0	11	33.3	11	13.1	40	17.1
ADEQUATE	26	27.4	66	24.5	6	60.0	13	39.4	20	23.8	52	22.2
INTERMEDIATE	31	32.6	80	29.7	2	20.0	7	21.2	29	34.5	73	31.2
INADEQUATE	25	26.3	72	26.8	0	0.0	2	6.1	24	28.6	69	29.5
C-SECTION BIRTHS	4	4.2	14	5.2	1	10.0	5	15.2	3	3.6	9	3.9
PRE-TERM BIRTHS	10	10.5	32	11.9	1	10.0	3	9.1	9	10.7	29	12.4
LOW BIRTHWEIGHT	5	5.3	13	4.8	0	0.0	1	3.0	5	6.0	12	5.1

Note: Unknown responses are excluded from the denominator when calculating percentages.

¹ Crude birth rate per 1,000 population. Population estimates by race by census area are inconsistent. Therefore, three-year rates by race are not reported.

² Teen birth rate per 1,000 female population ages 15-17, 18-19, and 15-19, respectively.

³ Fertility rate per 1,000 female population ages 15-44. Population estimates by race by census area are inconsistent. Therefore, three-year rates by race are not reported.

* Rates based on fewer than 10 occurrences are statistically unreliable and should be used with caution.

** Data suppressed for confidentiality concerns if total births to residents, by either race, is less than five observations.

**TABLE 2 SELECTED BIRTH STATISTICS REPORTED BY MOTHER'S RACE:
2005 AND 2003-2005
FAIRBANKS NORTH STAR BOROUGH**

	TOTAL				WHITE				NATIVE			
	2005 NUMBER	2005 RATE*	2003-2005 NUMBER	2003-2005 RATE*	2005 NUMBER	2005 RATE*	2003-2005 NUMBER	2003-2005 RATE*	2005 NUMBER	2005 RATE*	2003-2005 NUMBER	2003-2005 RATE*
BIRTH RATES												
CRUDE BIRTH RATE ¹	1,560	17.8	4,715	18.4	1,204	17.1	3,621		178	19.9	494	
TEEN BIRTH RATE ²												
15-17	19	10.0	79	14.1	13		53		2		10	
18-19	99	70.2	316	74.5	76		229		17		61	
15-19	118	35.6	395	40.1	89	35.2	282		19	42.3	71	
FERTILITY RATE ³	1,560	79.5	4,715	81.6	1,204	78.9	3,621		178	81.5	494	

	TOTAL				WHITE				NATIVE			
	2005 NUMBER	2005 %	2003-2005 NUMBER	2003-2005 %	2005 NUMBER	2005 %	2003-2005 NUMBER	2003-2005 %	2005 NUMBER	2005 %	2003-2005 NUMBER	2003-2005 %
BIRTHS												
WITHIN AREA	1,706	100.0	5,146	100.0	1,281	75.1	3,828	74.4	248	14.5	718	14.0
TO RESIDENTS	1,560	100.0	4,715	100.0	1,204	77.2	3,621	76.8	178	11.4	494	10.5
FACILITY												
HOSPITAL	1,464	93.8	4,484	95.1	1,120	93.0	3,422	94.5	172	96.6	481	97.4
BIRTHING CENTER	60	3.8	132	2.8	54	4.5	116	3.2	4	2.2	10	2.0
HOME	18	1.2	54	1.1	17	1.4	49	1.4	1	0.6	2	0.4
OTHER	0	0.0	0	0.0	0	0.0	0	0.0	0	0.0	0	0.0
OUTSIDE ALASKA	18	1.2	45	1.0	13	1.1	34	0.9	1	0.6	1	0.2
MOTHER CHARACTERISTICS												
AGE GROUP												
<15	0	0.0	3	0.1	0	0.0	2	0.1	0	0.0	1	0.2
15-19	118	7.6	395	8.4	89	7.4	282	7.8	19	10.7	71	14.4
20-24	507	32.5	1,578	33.5	375	31.2	1,190	32.9	70	39.3	185	37.4
25-29	486	31.2	1,380	29.3	376	31.3	1,062	29.4	53	29.8	131	26.5
30-34	290	18.6	862	18.3	235	19.5	692	19.1	24	13.5	66	13.4
35-39	118	7.6	384	8.1	98	8.1	302	8.3	8	4.5	31	6.3
40-44	37	2.4	104	2.2	28	2.3	83	2.3	4	2.2	9	1.8
45+	3	0.2	6	0.1	2	0.2	5	0.1	0	0.0	0	0.0
REPORTED DRINKING	13	0.8	39	0.8	6	0.5	16	0.4	7	3.9	20	4.1
REPORTED SMOKING	182	11.7	563	12.0	127	10.6	413	11.4	49	27.5	121	24.5
UNWED	354	22.7	1,085	23.0	201	16.7	655	18.1	113	63.5	299	60.5
EDUCATION												
<12 YEARS	134	8.9	368	8.1	94	8.0	264	7.5	36	21.4	75	16.1
12 YEARS	650	43.0	1,898	41.9	485	41.4	1,431	40.5	87	51.8	239	51.2
12+ YEARS	727	48.1	2,269	50.0	592	50.6	1,835	52.0	45	26.8	153	32.8
PRENATAL CARE												
TRIMESTER CARE BEGAN												
1ST TRIMESTER	1,235	81.6	3,732	81.2	962	82.2	2,917	82.4	129	75.9	339	71.8
3RD TRIMESTER	58	3.8	220	4.8	42	3.6	166	4.7	8	4.7	26	5.5
NO PRENATAL CARE	6	0.4	11	0.2	6	0.5	10	0.3	0	0.0	0	0.0
APNCU INDEX												
ADEQUATE+	301	20.0	898	19.6	238	20.5	713	20.2	37	22.0	84	17.9
ADEQUATE	664	44.2	2,074	45.3	512	44.1	1,584	45.0	67	39.9	206	43.8
INTERMEDIATE	321	21.4	933	20.4	261	22.5	739	21.0	25	14.9	73	15.5
INADEQUATE	216	14.4	673	14.7	150	12.9	486	13.8	39	23.2	107	22.8
C-SECTION BIRTHS	356	23.1	1,048	22.5	283	23.8	826	23.0	25	14.0	77	15.7
PRE-TERM BIRTHS	153	9.9	445	9.5	116	9.7	318	8.8	23	13.1	54	11.0
LOW BIRTHWEIGHT	99	6.4	255	5.4	76	6.3	188	5.2	7	4.0	22	4.5

Note: Unknown responses are excluded from the denominator when calculating percentages.

¹ Crude birth rate per 1,000 population. Population estimates by race by census area are inconsistent. Therefore, three-year rates by race are not reported.

² Teen birth rate per 1,000 female population ages 15-17, 18-19, and 15-19, respectively.

³ Fertility rate per 1,000 female population ages 15-44. Population estimates by race by census area are inconsistent. Therefore, three-year rates by race are not reported.

* Rates based on fewer than 10 occurrences are statistically unreliable and should be used with caution.

** Data suppressed for confidentiality concerns if total births to residents, by either race, is less than five observations.

**TABLE 2 SELECTED BIRTH STATISTICS REPORTED BY MOTHER'S RACE:
2005 AND 2003-2005
HAINES BOROUGH**

	TOTAL				WHITE				NATIVE			
	2005 NUMBER	2005 RATE*	2003-2005 NUMBER	2003-2005 RATE*	2005 NUMBER	2005 RATE*	2003-2005 NUMBER	2003-2005 RATE*	2005 NUMBER	2005 RATE*	2003-2005 NUMBER	2003-2005 RATE*
BIRTH RATES												
CRUDE BIRTH RATE ¹	24	10.9	63	9.3	19	10.3	48		3	9.6*	7	
TEEN BIRTH RATE ²												
15-17	1	18.9*	1	5.6*	0		0		1		1	
18-19	1	52.6*	4	61.5*	1		3		0		1	
15-19	2	27.8*	5	20.7*	1	20.0*	3		1	45.5*	2	
FERTILITY RATE ³	24	65.6	63	53.4	19	65.5	48		3	47.6*	7	

	TOTAL				WHITE				NATIVE			
	2005 NUMBER	2005 %	2003-2005 NUMBER	2003-2005 %	2005 NUMBER	2005 %	2003-2005 NUMBER	2003-2005 %	2005 NUMBER	2005 %	2003-2005 NUMBER	2003-2005 %
BIRTHS												
WITHIN AREA	1	100.0	2	100.0	0	0.0	1	50.0	0	0.0	0	0.0
TO RESIDENTS	24	100.0	63	100.0	19	79.2	48	76.2	3	12.5	7	11.1
FACILITY												
HOSPITAL	16	66.7	38	60.3	12	63.2	30	62.5	3	100.0	7	100.0
BIRTHING CENTER	7	29.2	16	25.4	7	36.8	16	33.3	0	0.0	0	0.0
HOME	1	4.2	3	4.8	0	0.0	2	4.2	0	0.0	0	0.0
OTHER	0	0.0	0	0.0	0	0.0	0	0.0	0	0.0	0	0.0
OUTSIDE ALASKA	0	0.0	6	9.5	0	0.0	0	0.0	0	0.0	0	0.0
MOTHER CHARACTERISTICS												
AGE GROUP												
<15	0	0.0	0	0.0	**		0	0.0	**		0	0.0
15-19	2	8.3	5	7.9	**		3	6.3	**		2	28.6
20-24	4	16.7	12	19.0	**		7	14.6	**		4	57.1
25-29	4	16.7	10	15.9	**		8	16.7	**		1	14.3
30-34	8	33.3	21	33.3	**		20	41.7	**		0	0.0
35-39	4	16.7	8	12.7	**		6	12.5	**		0	0.0
40-44	2	8.3	7	11.1	**		4	8.3	**		0	0.0
45+	0	0.0	0	0.0	**		0	0.0	**		0	0.0
REPORTED DRINKING	1	4.2	1	1.8	**		1	2.1	**		0	0.0
REPORTED SMOKING	1	4.2	6	10.5	**		4	8.3	**		2	28.6
UNWED	6	25.0	18	31.6	**		14	29.2	**		4	57.1
EDUCATION												
<12 YEARS	2	9.1	3	5.5	**		1	2.1	**		2	28.6
12 YEARS	7	31.8	21	38.2	**		15	31.9	**		5	71.4
12+ YEARS	13	59.1	31	56.4	**		31	66.0	**		0	0.0
PRENATAL CARE												
TRIMESTER CARE BEGAN												
1ST TRIMESTER	18	78.3	43	78.2	**		37	78.7	**		5	71.4
3RD TRIMESTER	0	0.0	2	3.6	**		2	4.3	**		0	0.0
NO PRENATAL CARE	0	0.0	0	0.0	**		0	0.0	**		0	0.0
APNCU INDEX												
ADEQUATE+	4	18.2	14	28.0	**		11	26.2	**		3	42.9
ADEQUATE	14	63.6	22	44.0	**		19	45.2	**		2	28.6
INTERMEDIATE	3	13.6	10	20.0	**		8	19.0	**		2	28.6
INADEQUATE	1	4.5	4	8.0	**		4	9.5	**		0	0.0
C-SECTION BIRTHS	6	25.0	13	22.8	**		12	25.0	**		0	0.0
PRE-TERM BIRTHS	1	4.3	2	3.6	**		2	4.2	**		0	0.0
LOW BIRTHWEIGHT	0	0.0	0	0.0	**		0	0.0	**		0	0.0

Note: Unknown responses are excluded from the denominator when calculating percentages.

¹ Crude birth rate per 1,000 population. Population estimates by race by census area are inconsistent. Therefore, three-year rates by race are not reported.

² Teen birth rate per 1,000 female population ages 15-17, 18-19, and 15-19, respectively.

³ Fertility rate per 1,000 female population ages 15-44. Population estimates by race by census area are inconsistent. Therefore, three-year rates by race are not reported.

* Rates based on fewer than 10 occurrences are statistically unreliable and should be used with caution.

** Data suppressed for confidentiality concerns if total births to residents, by either race, is less than five observations.

**TABLE 2 SELECTED BIRTH STATISTICS REPORTED BY MOTHER'S RACE:
2005 AND 2003-2005
JUNEAU BOROUGH**

	TOTAL				WHITE				NATIVE			
	2005 NUMBER	2005 RATE*	2003-2005 NUMBER	2003-2005 RATE*	2005 NUMBER	2005 RATE*	2003-2005 NUMBER	2003-2005 RATE*	2005 NUMBER	2005 RATE*	2003-2005 NUMBER	2003-2005 RATE*
BIRTH RATES												
CRUDE BIRTH RATE ¹	370	11.9	1,148	12.2	244	10.1	789		87	18.3	251	
TEEN BIRTH RATE ²												
15-17	7	9.3 *	25	11.5	1		8		5		13	
18-19	32	67.2	77	54.6	14		41		16		30	
15-19	39	31.7	102	28.5	15	16.3	49		21	95.5	43	
FERTILITY RATE ³	370	56.5	1,148	57.9	244	48.4	789		87	82.4	251	

	TOTAL				WHITE				NATIVE			
	2005 NUMBER	2005 %	2003-2005 NUMBER	2003-2005 %	2005 NUMBER	2005 %	2003-2005 NUMBER	2003-2005 %	2005 NUMBER	2005 %	2003-2005 NUMBER	2003-2005 %
BIRTHS												
WITHIN AREA	423	100.0	1,251	100.0	282	66.7	861	68.8	101	23.9	279	22.3
TO RESIDENTS	370	100.0	1,148	100.0	244	65.9	789	68.7	87	23.5	251	21.9
FACILITY												
HOSPITAL	327	88.4	993	86.5	205	84.0	654	82.9	85	97.7	242	96.4
BIRTHING CENTER	28	7.6	96	8.4	26	10.7	83	10.5	1	1.1	7	2.8
HOME	12	3.2	42	3.7	10	4.1	35	4.4	1	1.1	2	0.8
OTHER	0	0.0	0	0.0	0	0.0	0	0.0	0	0.0	0	0.0
OUTSIDE ALASKA	3	0.8	17	1.5	3	1.2	17	2.2	0	0.0	0	0.0
MOTHER CHARACTERISTICS												
AGE GROUP												
<15	0	0.0	0	0.0	0	0.0	0	0.0	0	0.0	0	0.0
15-19	39	10.5	102	8.9	15	6.1	49	6.2	21	24.1	43	17.1
20-24	83	22.4	280	24.4	53	21.7	169	21.4	26	29.9	91	36.3
25-29	104	28.1	317	27.6	68	27.9	219	27.8	24	27.6	66	26.3
30-34	83	22.4	254	22.1	61	25.0	199	25.2	13	14.9	31	12.4
35-39	51	13.8	161	14.0	39	16.0	124	15.7	3	3.4	17	6.8
40-44	9	2.4	31	2.7	7	2.9	26	3.3	0	0.0	3	1.2
45+	1	0.3	3	0.3	1	0.4	3	0.4	0	0.0	0	0.0
REPORTED DRINKING	8	2.2	26	2.3	7	2.9	17	2.2	1	1.2	8	3.2
REPORTED SMOKING	54	14.7	178	15.6	28	11.6	107	13.6	22	25.6	62	24.9
UNWED	145	39.2	413	36.0	69	28.3	200	25.4	65	74.7	181	72.1
EDUCATION												
<12 YEARS	48	13.2	129	11.5	20	8.4	54	7.0	26	30.6	68	27.8
12 YEARS	157	43.3	414	36.9	96	40.2	260	33.6	44	51.8	116	47.3
12+ YEARS	158	43.5	578	51.6	123	51.5	460	59.4	15	17.6	61	24.9
PRENATAL CARE												
TRIMESTER CARE BEGAN												
1ST TRIMESTER	336	91.6	991	91.3	231	95.5	705	94.0	74	86.0	201	85.9
3RD TRIMESTER	3	0.8	13	1.2	2	0.8	6	0.8	1	1.2	4	1.7
NO PRENATAL CARE	1	0.3	7	0.7	0	0.0	5	0.8	1	1.2	2	1.0
APNCU INDEX												
ADEQUATE+	155	42.8	427	44.9	108	45.2	314	47.4	34	40.5	80	40.6
ADEQUATE	151	41.7	381	40.1	100	41.8	266	40.1	33	39.3	76	38.6
INTERMEDIATE	35	9.7	85	8.9	23	9.6	58	8.7	9	10.7	20	10.2
INADEQUATE	21	5.8	57	6.0	8	3.3	25	3.8	8	9.5	21	10.7
C-SECTION BIRTHS	111	30.4	386	34.2	77	32.1	280	36.2	17	19.8	68	27.3
PRE-TERM BIRTHS	35	9.5	125	11.1	20	8.2	81	10.4	12	13.8	32	13.1
LOW BIRTHWEIGHT	20	5.4	66	5.8	12	4.9	44	5.6	5	5.7	15	6.0

Note: Unknown responses are excluded from the denominator when calculating percentages.

¹ Crude birth rate per 1,000 population. Population estimates by race by census area are inconsistent. Therefore, three-year rates by race are not reported.

² Teen birth rate per 1,000 female population ages 15-17, 18-19, and 15-19, respectively.

³ Fertility rate per 1,000 female population ages 15-44. Population estimates by race by census area are inconsistent. Therefore, three-year rates by race are not reported.

* Rates based on fewer than 10 occurrences are statistically unreliable and should be used with caution.

** Data suppressed for confidentiality concerns if total births to residents, by either race, is less than five observations.

TABLE 2 **SELECTED BIRTH STATISTICS REPORTED BY MOTHER'S RACE:**
2005 AND 2003–2005
KENAI PENINSULA BOROUGH

	TOTAL				WHITE				NATIVE			
	2005 NUMBER	2005 RATE*	2003–2005 NUMBER	2003–2005 RATE*	2005 NUMBER	2005 RATE*	2003–2005 NUMBER	2003–2005 RATE*	2005 NUMBER	2005 RATE*	2003–2005 NUMBER	2003–2005 RATE*
BIRTH RATES												
CRUDE BIRTH RATE ¹	645	12.6	1,868	12.1	567	12.7	1,633		61	12.4	184	
TEEN BIRTH RATE ²												
15–17	15	10.4	49	11.3	15		47		0		2	
18–19	48	67.8	143	65.7	41		118		5		21	
15–19	63	29.3	192	29.5	56	30.3	165		5	22.9*	23	
FERTILITY RATE ³	645	65.7	1,868	62.3	567	67.0	1,633		61	61.1	184	
BIRTHS												
WITHIN AREA	544	100.0	1,611	100.0	489	89.9	1,440	89.4	44	8.1	129	8.0
TO RESIDENTS	645	100.0	1,868	100.0	567	87.9	1,633	87.4	61	9.5	184	9.9
FACILITY												
HOSPITAL	584	90.5	1,700	91.0	508	89.6	1,473	90.2	60	98.4	182	98.9
BIRTHING CENTER	40	6.2	101	5.4	39	6.9	97	5.9	1	1.6	2	1.1
HOME	16	2.5	55	2.9	15	2.6	51	3.1	0	0.0	0	0.0
OTHER	0	0.0	4	0.2	0	0.0	4	0.2	0	0.0	0	0.0
OUTSIDE ALASKA	5	0.8	8	0.4	5	0.9	8	0.5	0	0.0	0	0.0
MOTHER CHARACTERISTICS												
AGE GROUP												
<15	0	0.0	1	0.1	0	0.0	1	0.1	0	0.0	0	0.0
15–19	63	9.8	192	10.3	56	9.9	165	10.1	5	8.2	23	12.5
20–24	185	28.7	502	26.9	158	27.9	424	26.0	22	36.1	63	34.2
25–29	183	28.4	516	27.6	164	28.9	465	28.5	17	27.9	44	23.9
30–34	133	20.6	412	22.1	119	21.0	361	22.1	9	14.8	35	19.0
35–39	61	9.5	189	10.1	53	9.3	166	10.2	5	8.2	16	8.7
40–44	18	2.8	46	2.5	16	2.8	43	2.6	2	3.3	2	1.1
45+	2	0.3	10	0.5	1	0.2	8	0.5	1	1.6	1	0.5
REPORTED DRINKING	6	0.9	29	1.6	4	0.7	22	1.4	2	3.3	7	3.8
REPORTED SMOKING	94	14.7	307	16.5	75	13.3	237	14.6	18	29.5	67	36.4
UNWED	205	31.9	553	29.7	168	29.7	449	27.5	34	55.7	96	52.2
EDUCATION												
<12 YEARS	68	10.6	250	13.6	61	10.8	214	13.3	6	9.8	34	18.5
12 YEARS	290	45.2	777	42.2	248	44.0	661	41.0	37	60.7	97	52.7
12+ YEARS	283	44.1	813	44.2	255	45.2	736	45.7	18	29.5	53	28.8
PRENATAL CARE												
TRIMESTER CARE BEGAN												
1ST TRIMESTER	529	83.8	1,491	82.1	464	83.5	1,315	82.6	53	86.9	140	78.7
3RD TRIMESTER	9	1.4	42	2.3	9	1.6	39	2.4	0	0.0	3	1.7
NO PRENATAL CARE	1	0.2	5	0.3	1	0.2	3	0.2	0	0.0	2	1.1
APNCU INDEX												
ADEQUATE+	165	26.5	419	24.0	148	27.1	373	24.4	13	21.3	34	19.1
ADEQUATE	265	42.6	791	45.3	227	41.5	699	45.8	30	49.2	71	39.9
INTERMEDIATE	131	21.1	322	18.4	116	21.2	274	17.9	13	21.3	43	24.2
INADEQUATE	61	9.8	216	12.4	56	10.2	181	11.9	5	8.2	30	16.9
C-SECTION BIRTHS	153	24.0	401	21.6	136	24.2	352	21.7	11	18.0	34	18.5
PRE-TERM BIRTHS	51	8.0	153	8.2	45	8.0	134	8.3	5	8.2	17	9.2
LOW BIRTHWEIGHT	30	4.7	85	4.6	27	4.8	77	4.7	1	1.6	6	3.3

Note: Unknown responses are excluded from the denominator when calculating percentages.

¹ Crude birth rate per 1,000 population. Population estimates by race by census area are inconsistent. Therefore, three-year rates by race are not reported.

² Teen birth rate per 1,000 female population ages 15–17, 18–19, and 15–19, respectively.

³ Fertility rate per 1,000 female population ages 15–44. Population estimates by race by census area are inconsistent. Therefore, three-year rates by race are not reported.

* Rates based on fewer than 10 occurrences are statistically unreliable and should be used with caution.

** Data suppressed for confidentiality concerns if total births to residents, by either race, is less than five observations.

**TABLE 2 SELECTED BIRTH STATISTICS REPORTED BY MOTHER'S RACE:
2005 AND 2003-2005
KETCHIKAN GATEWAY BOROUGH**

	TOTAL				WHITE				NATIVE			
	2005 NUMBER	2005 RATE*	2003-2005 NUMBER	2003-2005 RATE*	2005 NUMBER	2005 RATE*	2003-2005 NUMBER	2003-2005 RATE*	2005 NUMBER	2005 RATE*	2003-2005 NUMBER	2003-2005 RATE*
BIRTH RATES												
CRUDE BIRTH RATE ¹	191	14.6	551	13.8	124	12.4	383		47	20.4	117	
TEEN BIRTH RATE ²												
15-17	4	11.8 *	15	15.3	3		8		1		7	
18-19	15	79.4	41	72.8	8		24		6		13	
15-19	19	36.0	56	36.3	11	28.5	32		7	68.6 *	20	
FERTILITY RATE ³	191	73.7	551	69.2	124	63.1	383		47	99.6	117	

	TOTAL				WHITE				NATIVE			
	2005 NUMBER	2005 %	2003-2005 NUMBER	2003-2005 %	2005 NUMBER	2005 %	2003-2005 NUMBER	2003-2005 %	2005 NUMBER	2005 %	2003-2005 NUMBER	2003-2005 %
BIRTHS												
WITHIN AREA	270	100.0	759	100.0	163	60.4	485	63.9	86	31.9	221	29.1
TO RESIDENTS	191	100.0	551	100.0	124	64.9	383	69.5	47	24.6	117	21.2
FACILITY												
HOSPITAL	149	78.0	445	80.8	97	78.2	309	80.7	37	78.7	95	81.2
BIRTHING CENTER	2	1.0	19	3.4	1	0.8	14	3.7	0	0.0	4	3.4
HOME	26	13.6	60	10.9	17	13.7	43	11.2	7	14.9	13	11.1
OTHER	0	0.0	2	0.4	0	0.0	1	0.3	0	0.0	1	0.9
OUTSIDE ALASKA	14	7.3	25	4.5	9	7.3	16	4.2	3	6.4	4	3.4
MOTHER CHARACTERISTICS												
AGE GROUP												
<15	0	0.0	0	0.0	0	0.0	0	0.0	0	0.0	0	0.0
15-19	19	9.9	56	10.2	11	8.9	32	8.4	7	14.9	20	17.1
20-24	57	29.8	165	29.9	37	29.8	109	28.5	13	27.7	41	35.0
25-29	57	29.8	143	26.0	38	30.6	101	26.4	13	27.7	27	23.1
30-34	35	18.3	125	22.7	22	17.7	91	23.8	11	23.4	24	20.5
35-39	21	11.0	54	9.8	15	12.1	43	11.2	3	6.4	5	4.3
40-44	2	1.0	7	1.3	1	0.8	6	1.6	0	0.0	0	0.0
45+	0	0.0	1	0.2	0	0.0	1	0.3	0	0.0	0	0.0
REPORTED DRINKING	1	0.6	2	0.4	1	0.9	1	0.3	0	0.0	1	0.9
REPORTED SMOKING	45	23.8	121	22.0	33	26.8	84	22.0	9	19.1	30	25.6
UNWED	88	46.1	223	40.5	49	39.5	129	33.7	29	61.7	71	60.7
EDUCATION												
<12 YEARS	19	10.6	69	13.1	11	9.3	36	9.9	8	18.6	25	22.5
12 YEARS	83	46.1	220	41.9	53	44.9	139	38.2	19	44.2	54	48.6
12+ YEARS	78	43.3	236	45.0	54	45.8	189	51.9	16	37.2	32	28.8
PRENATAL CARE												
TRIMESTER CARE BEGAN												
1ST TRIMESTER	157	86.7	462	86.8	105	89.0	333	89.5	38	82.6	89	78.8
3RD TRIMESTER	2	1.1	9	1.7	1	0.8	3	0.8	1	2.2	6	5.3
NO PRENATAL CARE	1	0.6	4	0.8	1	0.8	2	0.5	0	0.0	2	1.8
APNCU INDEX												
ADEQUATE+	78	43.1	233	44.4	49	41.5	164	44.9	20	43.5	45	39.5
ADEQUATE	84	46.4	238	45.3	57	48.3	170	46.6	20	43.5	48	42.1
INTERMEDIATE	3	1.7	18	3.4	1	0.8	14	3.8	1	2.2	3	2.6
INADEQUATE	16	8.8	36	6.9	11	9.3	17	4.7	5	10.9	18	15.8
C-SECTION BIRTHS	53	27.9	137	24.9	33	26.6	98	25.6	15	31.9	28	23.9
PRE-TERM BIRTHS	17	9.0	52	9.5	11	9.0	35	9.2	4	8.5	11	9.5
LOW BIRTHWEIGHT	17	9.0	39	7.1	12	9.8	27	7.1	3	6.4	8	6.9

Note: Unknown responses are excluded from the denominator when calculating percentages.

¹ Crude birth rate per 1,000 population. Population estimates by race by census area are inconsistent. Therefore, three-year rates by race are not reported.

² Teen birth rate per 1,000 female population ages 15-17, 18-19, and 15-19, respectively.

³ Fertility rate per 1,000 female population ages 15-44. Population estimates by race by census area are inconsistent. Therefore, three-year rates by race are not reported.

* Rates based on fewer than 10 occurrences are statistically unreliable and should be used with caution.

** Data suppressed for confidentiality concerns if total births to residents, by either race, is less than five observations.

**TABLE 2 SELECTED BIRTH STATISTICS REPORTED BY MOTHER'S RACE:
2005 AND 2003-2005
KODIAK ISLAND BOROUGH**

	TOTAL				WHITE				NATIVE			
	2005 NUMBER	2005 RATE*	2003-2005 NUMBER	2003-2005 RATE*	2005 NUMBER	2005 RATE*	2003-2005 NUMBER	2003-2005 RATE*	2005 NUMBER	2005 RATE*	2003-2005 NUMBER	2003-2005 RATE*
BIRTH RATES												
CRUDE BIRTH RATE ¹	220	16.1	636	15.5	138	16.0	382		34	14.9	99	
TEEN BIRTH RATE ²												
15-17	6	17.7 *	16	15.6	1		5		4		8	
18-19	9	50.6 *	37	67.5	5		23		2		8	
15-19	15	29.0	53	33.7	6	19.2 *	28		6	75.9 *	16	
FERTILITY RATE ³	220	77.5	636	73.7	138	74.0	382		34	78.2	99	
	2005 NUMBER	2005 %	2003-2005 NUMBER	2003-2005 %	2005 NUMBER	2005 %	2003-2005 NUMBER	2003-2005 %	2005 NUMBER	2005 %	2003-2005 NUMBER	2003-2005 %
BIRTHS												
WITHIN AREA	204	100.0	580	100.0	132	64.7	361	62.2	27	13.2	79	13.6
TO RESIDENTS	220	100.0	636	100.0	138	62.7	382	60.1	34	15.5	99	15.6
FACILITY												
HOSPITAL	215	97.7	625	98.3	133	96.4	372	97.4	34	100.0	98	99.0
BIRTHING CENTER	0	0.0	0	0.0	0	0.0	0	0.0	0	0.0	0	0.0
HOME	2	0.9	7	1.1	2	1.4	6	1.6	0	0.0	1	1.0
OTHER	0	0.0	0	0.0	0	0.0	0	0.0	0	0.0	0	0.0
OUTSIDE ALASKA	3	1.4	4	0.6	3	2.2	4	1.0	0	0.0	0	0.0
MOTHER CHARACTERISTICS												
AGE GROUP												
<15	0	0.0	0	0.0	0	0.0	0	0.0	0	0.0	0	0.0
15-19	15	6.8	53	8.3	6	4.3	28	7.3	6	17.6	16	16.2
20-24	58	26.4	168	26.5	28	20.3	89	23.4	15	44.1	30	30.3
25-29	64	29.1	183	28.8	48	34.8	123	32.3	4	11.8	21	21.2
30-34	43	19.5	136	21.4	32	23.2	85	22.3	5	14.7	22	22.2
35-39	28	12.7	69	10.9	17	12.3	41	10.8	4	11.8	10	10.1
40-44	12	5.5	26	4.1	7	5.1	15	3.9	0	0.0	0	0.0
45+	0	0.0	0	0.0	0	0.0	0	0.0	0	0.0	0	0.0
REPORTED DRINKING	2	0.9	2	0.3	1	0.7	1	0.3	1	2.9	1	1.0
REPORTED SMOKING	21	9.5	65	10.3	9	6.5	32	8.4	10	29.4	28	28.3
UNWED	57	25.9	178	28.0	23	16.7	64	16.8	19	55.9	56	56.6
EDUCATION												
<12 YEARS	27	12.6	78	12.5	13	9.8	37	9.9	8	24.2	20	20.8
12 YEARS	85	39.7	233	37.4	45	33.8	119	31.7	19	57.6	49	51.0
12+ YEARS	102	47.7	312	50.1	75	56.4	219	58.4	6	18.2	27	28.1
PRENATAL CARE												
TRIMESTER CARE BEGAN												
1ST TRIMESTER	192	87.3	538	85.5	129	93.5	342	89.8	28	82.4	88	88.9
3RD TRIMESTER	6	2.7	14	2.2	4	2.9	9	2.4	1	2.9	2	2.0
NO PRENATAL CARE	0	0.0	1	0.2	0	0.0	1	0.3	0	0.0	0	0.0
APNCU INDEX												
ADEQUATE+	41	19.0	113	18.7	27	20.0	77	20.8	7	21.2	17	18.1
ADEQUATE	95	44.0	259	42.8	63	46.7	175	47.3	9	27.3	31	33.0
INTERMEDIATE	60	27.8	163	26.9	37	27.4	89	24.1	13	39.4	35	37.2
INADEQUATE	20	9.3	70	11.6	8	5.9	29	7.8	4	12.1	11	11.7
C-SECTION BIRTHS	52	23.7	142	22.4	32	23.4	83	21.8	9	26.5	27	27.3
PRE-TERM BIRTHS	17	7.7	64	10.1	6	4.3	29	7.6	4	11.8	13	13.1
LOW BIRTHWEIGHT	7	3.2	44	6.9	2	1.4	16	4.2	1	2.9	9	9.1

Note: Unknown responses are excluded from the denominator when calculating percentages.

¹ Crude birth rate per 1,000 population. Population estimates by race by census area are inconsistent. Therefore, three-year rates by race are not reported.

² Teen birth rate per 1,000 female population ages 15-17, 18-19, and 15-19, respectively.

³ Fertility rate per 1,000 female population ages 15-44. Population estimates by race by census area are inconsistent. Therefore, three-year rates by race are not reported.

* Rates based on fewer than 10 occurrences are statistically unreliable and should be used with caution.

** Data suppressed for confidentiality concerns if total births to residents, by either race, is less than five observations.

**TABLE 2 SELECTED BIRTH STATISTICS REPORTED BY MOTHER'S RACE:
2005 AND 2003-2005
LAKE AND PENINSULA BOROUGH**

	TOTAL				WHITE				NATIVE			
	2005 NUMBER	2005 RATE*	2003-2005 NUMBER	2003-2005 RATE*	2005 NUMBER	2005 RATE*	2003-2005 NUMBER	2003-2005 RATE*	2005 NUMBER	2005 RATE*	2003-2005 NUMBER	2003-2005 RATE*
BIRTH RATES												
CRUDE BIRTH RATE ¹	26	16.0	80	16.4	3	6.8*	14		22	19.7	64	
TEEN BIRTH RATE ²												
15-17	0	0.0	2	11.9*	0		1		0		1	
18-19	3	115.4*	9	115.4*	0		0		3		9	
15-19	3	36.1*	11	44.7	0	0.0	1		3	44.1*	10	
FERTILITY RATE ³	26	81.5	80	81.5	3	35.3*	14		22	96.1	64	

	TOTAL				WHITE				NATIVE			
	2005 NUMBER	2005 %	2003-2005 NUMBER	2003-2005 %	2005 NUMBER	2005 %	2003-2005 NUMBER	2003-2005 %	2005 NUMBER	2005 %	2003-2005 NUMBER	2003-2005 %
BIRTHS												
WITHIN AREA	0	0.0	1	100.0	0	0.0	0	0.0	0	0.0	0	0.0
TO RESIDENTS	26	100.0	80	100.0	3	11.5	14	17.5	22	84.6	64	80.0
FACILITY												
HOSPITAL	24	92.3	73	91.3	2	66.7	9	64.3	21	95.5	63	98.4
BIRTHING CENTER	2	7.7	4	5.0	1	33.3	3	21.4	1	4.5	1	1.6
HOME	0	0.0	1	1.3	0	0.0	0	0.0	0	0.0	0	0.0
OTHER	0	0.0	0	0.0	0	0.0	0	0.0	0	0.0	0	0.0
OUTSIDE ALASKA	0	0.0	2	2.5	0	0.0	2	14.3	0	0.0	0	0.0
MOTHER CHARACTERISTICS												
AGE GROUP												
<15	0	0.0	0	0.0	**		0	0.0	**		0	0.0
15-19	3	11.5	11	13.8	**		1	7.1	**		10	15.6
20-24	8	30.8	30	37.5	**		1	7.1	**		28	43.8
25-29	10	38.5	22	27.5	**		5	35.7	**		16	25.0
30-34	1	3.8	7	8.8	**		4	28.6	**		3	4.7
35-39	2	7.7	5	6.3	**		1	7.1	**		4	6.3
40-44	2	7.7	5	6.3	**		2	14.3	**		3	4.7
45+	0	0.0	0	0.0	**		0	0.0	**		0	0.0
REPORTED DRINKING	0	0.0	1	1.3	**		0	0.0	**		1	1.6
REPORTED SMOKING	5	19.2	28	35.4	**		1	7.1	**		27	42.2
UNWED	16	61.5	51	65.4	**		2	15.4	**		49	76.6
EDUCATION												
<12 YEARS	4	15.4	16	20.3	**		2	14.3	**		14	21.9
12 YEARS	14	53.8	44	55.7	**		1	7.1	**		42	65.6
12+ YEARS	8	30.8	19	24.1	**		11	78.6	**		8	12.5
PRENATAL CARE												
TRIMESTER CARE BEGAN												
1ST TRIMESTER	26	100.0	69	87.3	**		12	85.7	**		56	87.5
3RD TRIMESTER	0	0.0	1	1.3	**		0	0.0	**		1	1.6
NO PRENATAL CARE	0	0.0	0	0.0	**		0	0.0	**		0	0.0
APNCU INDEX												
ADEQUATE+	1	4.0	16	20.5	**		3	21.4	**		13	20.6
ADEQUATE	10	40.0	23	29.5	**		3	21.4	**		20	31.7
INTERMEDIATE	10	40.0	25	32.1	**		7	50.0	**		18	28.6
INADEQUATE	4	16.0	14	17.9	**		1	7.1	**		12	19.0
C-SECTION BIRTHS	2	7.7	6	7.6	**		1	7.1	**		5	7.8
PRE-TERM BIRTHS	0	0.0	3	3.8	**		1	7.1	**		2	3.1
LOW BIRTHWEIGHT	0	0.0	1	1.3	**		1	7.1	**		0	0.0

Note: Unknown responses are excluded from the denominator when calculating percentages.

¹ Crude birth rate per 1,000 population. Population estimates by race by census area are inconsistent. Therefore, three-year rates by race are not reported.

² Teen birth rate per 1,000 female population ages 15-17, 18-19, and 15-19, respectively.

³ Fertility rate per 1,000 female population ages 15-44. Population estimates by race by census area are inconsistent. Therefore, three-year rates by race are not reported.

* Rates based on fewer than 10 occurrences are statistically unreliable and should be used with caution.

** Data suppressed for confidentiality concerns if total births to residents, by either race, is less than five observations.

TABLE 2 **SELECTED BIRTH STATISTICS REPORTED BY MOTHER'S RACE:**
2005 AND 2003-2005
MATANUSKA-SUSITNA BOROUGH

	TOTAL				WHITE				NATIVE			
	2005 NUMBER	2005 RATE*	2003-2005 NUMBER	2003-2005 RATE*	2005 NUMBER	2005 RATE*	2003-2005 NUMBER	2003-2005 RATE*	2005 NUMBER	2005 RATE*	2003-2005 NUMBER	2003-2005 RATE*
BIRTH RATES												
CRUDE BIRTH RATE ¹	1,125	15.2	3,034	14.3	965	15.1	2,644		98	15.0	262	
TEEN BIRTH RATE ²												
15-17	27	12.8	78	12.7	20		60		5		12	
18-19	64	60.4	214	68.5	51		182		8		23	
15-19	91	28.7	292	31.6	71	26.7	242		13	37.4	35	
FERTILITY RATE ³	1,125	73.8	3,034	68.5	965	74.4	2,644		98	64.2	262	
BIRTHS												
WITHIN AREA	720	100.0	2,007	100.0	655	91.0	1,849	92.1	27	3.8	85	4.2
TO RESIDENTS	1,125	100.0	3,034	100.0	965	85.8	2,644	87.1	98	8.7	262	8.6
FACILITY												
HOSPITAL	984	87.5	2,674	88.1	833	86.3	2,303	87.1	90	91.8	251	95.8
BIRTHING CENTER	87	7.7	238	7.8	82	8.5	230	8.7	5	5.1	6	2.3
HOME	40	3.6	101	3.3	38	3.9	93	3.5	1	1.0	3	1.1
OTHER	7	0.6	7	0.2	6	0.6	6	0.2	1	1.0	1	0.4
OUTSIDE ALASKA	7	0.6	14	0.5	6	0.6	12	0.5	1	1.0	1	0.4
MOTHER CHARACTERISTICS												
AGE GROUP												
<15	1	0.1	5	0.2	1	0.1	4	0.2	0	0.0	1	0.4
15-19	91	8.1	292	9.6	71	7.4	242	9.2	13	13.3	35	13.4
20-24	337	30.0	865	28.5	294	30.5	741	28.0	34	34.7	99	37.8
25-29	341	30.3	870	28.7	304	31.5	787	29.8	22	22.4	55	21.0
30-34	198	17.6	584	19.3	172	17.8	513	19.4	14	14.3	42	16.0
35-39	115	10.2	307	10.1	89	9.2	258	9.8	13	13.3	28	10.7
40-44	40	3.6	104	3.4	32	3.3	93	3.5	2	2.0	2	0.8
45+	2	0.2	6	0.2	2	0.2	6	0.2	0	0.0	0	0.0
REPORTED DRINKING	12	1.1	39	1.3	11	1.2	32	1.2	1	1.0	6	2.3
REPORTED SMOKING	165	14.8	471	15.7	138	14.4	397	15.1	20	20.6	65	24.9
UNWED	321	28.6	875	28.9	262	27.2	720	27.2	39	40.2	117	44.8
EDUCATION												
<12 YEARS	146	13.3	406	14.0	119	12.6	334	13.1	20	20.8	57	22.4
12 YEARS	465	42.3	1,221	42.0	389	41.1	1,038	40.8	46	47.9	132	51.8
12+ YEARS	489	44.5	1,279	44.0	438	46.3	1,170	46.0	30	31.3	66	25.9
PRENATAL CARE												
TRIMESTER CARE BEGAN												
1ST TRIMESTER	917	82.8	2,388	80.7	790	83.2	2,096	81.2	83	85.6	206	78.9
3RD TRIMESTER	42	3.8	141	4.8	36	3.8	121	4.7	2	2.1	10	3.8
NO PRENATAL CARE	2	0.2	8	0.3	1	0.1	6	0.2	1	1.1	1	0.4
APNCU INDEX												
ADEQUATE+	368	34.9	952	33.7	325	36.0	869	35.4	22	23.2	48	18.8
ADEQUATE	446	42.3	1,176	41.7	381	42.2	1,033	42.1	42	44.2	98	38.4
INTERMEDIATE	124	11.8	318	11.3	96	10.6	243	9.9	22	23.2	62	24.3
INADEQUATE	117	11.1	376	13.3	101	11.2	309	12.6	9	9.5	47	18.4
C-SECTION BIRTHS	252	22.9	685	22.9	223	23.5	615	23.5	11	11.5	36	13.8
PRE-TERM BIRTHS	120	10.7	313	10.3	108	11.2	280	10.6	7	7.1	22	8.4
LOW BIRTHWEIGHT	70	6.2	182	6.0	63	6.5	164	6.2	2	2.0	11	4.2

Note: Unknown responses are excluded from the denominator when calculating percentages.

¹ Crude birth rate per 1,000 population. Population estimates by race by census area are inconsistent. Therefore, three-year rates by race are not reported.

² Teen birth rate per 1,000 female population ages 15-17, 18-19, and 15-19, respectively.

³ Fertility rate per 1,000 female population ages 15-44. Population estimates by race by census area are inconsistent. Therefore, three-year rates by race are not reported.

* Rates based on fewer than 10 occurrences are statistically unreliable and should be used with caution.

** Data suppressed for confidentiality concerns if total births to residents, by either race, is less than five observations.

**TABLE 2 SELECTED BIRTH STATISTICS REPORTED BY MOTHER'S RACE:
2005 AND 2003-2005
NOME CENSUS AREA**

	TOTAL				WHITE				NATIVE			
	2005 NUMBER	2005 RATE*	2003-2005 NUMBER	2003-2005 RATE*	2005 NUMBER	2005 RATE*	2003-2005 NUMBER	2003-2005 RATE*	2005 NUMBER	2005 RATE*	2003-2005 NUMBER	2003-2005 RATE*
BIRTH RATES												
CRUDE BIRTH RATE ¹	248	26.2	674	23.8	20	9.2	58		224	31.7	607	
TEEN BIRTH RATE ²												
15-17	17	51.8	44	46.8	0		2		17		42	
18-19	22	152.8	77	182.9	0		1		22		76	
15-19	39	82.6	121	88.9	0	0.0	3		39	98.2	118	
FERTILITY RATE ³	248	133.8	674	120.5	20	49.6	58		224	160.6	607	

	TOTAL				WHITE				NATIVE			
	2005 NUMBER	2005 %	2003-2005 NUMBER	2003-2005 %	2005 NUMBER	2005 %	2003-2005 NUMBER	2003-2005 %	2005 NUMBER	2005 %	2003-2005 NUMBER	2003-2005 %
BIRTHS												
WITHIN AREA	108	100.0	328	100.0	4	3.7	13	4.0	102	94.4	311	94.8
TO RESIDENTS	248	100.0	674	100.0	20	8.1	58	8.6	224	90.3	607	90.1
FACILITY												
HOSPITAL	243	98.0	663	98.4	16	80.0	50	86.2	224	100.0	605	99.7
BIRTHING CENTER	1	0.4	1	0.1	1	5.0	1	1.7	0	0.0	0	0.0
HOME	0	0.0	0	0.0	0	0.0	0	0.0	0	0.0	0	0.0
OTHER	1	0.4	3	0.4	0	0.0	0	0.0	0	0.0	2	0.3
OUTSIDE ALASKA	3	1.2	7	1.0	3	15.0	7	12.1	0	0.0	0	0.0
MOTHER CHARACTERISTICS												
AGE GROUP												
<15	1	0.4	4	0.6	0	0.0	0	0.0	1	0.4	4	0.7
15-19	39	15.7	121	18.0	0	0.0	3	5.2	39	17.4	118	19.4
20-24	73	29.4	196	29.1	2	10.0	8	13.8	69	30.8	186	30.6
25-29	72	29.0	178	26.4	8	40.0	16	27.6	64	28.6	160	26.4
30-34	41	16.5	111	16.5	8	40.0	17	29.3	33	14.7	92	15.2
35-39	18	7.3	51	7.6	1	5.0	13	22.4	15	6.7	35	5.8
40-44	4	1.6	13	1.9	1	5.0	1	1.7	3	1.3	12	2.0
45+	0	0.0	0	0.0	0	0.0	0	0.0	0	0.0	0	0.0
REPORTED DRINKING	12	4.9	51	7.7	1	5.9	1	1.9	11	4.9	50	8.3
REPORTED SMOKING	128	51.8	361	53.7	0	0.0	3	5.3	128	57.1	358	59.0
UNWED	171	69.0	458	68.0	3	15.0	9	15.5	167	74.6	448	73.8
EDUCATION												
<12 YEARS	64	26.3	183	27.6	0	0.0	2	3.7	64	29.0	180	29.9
12 YEARS	138	56.8	383	57.8	2	10.5	11	20.4	134	60.6	370	61.5
12+ YEARS	41	16.9	97	14.6	17	89.5	41	75.9	23	10.4	52	8.6
PRENATAL CARE												
TRIMESTER CARE BEGAN												
1ST TRIMESTER	184	75.4	491	73.7	18	94.7	50	87.7	164	73.9	435	72.4
3RD TRIMESTER	19	7.8	42	6.3	0	0.0	2	3.5	19	8.6	40	6.7
NO PRENATAL CARE	2	0.8	3	0.4	0	0.0	0	0.0	2	0.9	3	0.5
APNCU INDEX												
ADEQUATE+	51	20.8	129	19.3	5	27.8	11	20.0	46	20.5	117	19.4
ADEQUATE	73	29.8	210	31.5	8	44.4	21	38.2	63	28.1	186	30.8
INTERMEDIATE	68	27.8	182	27.3	3	16.7	17	30.9	65	29.0	164	27.2
INADEQUATE	53	21.6	146	21.9	2	11.1	6	10.9	50	22.3	137	22.7
C-SECTION BIRTHS	25	10.2	61	9.2	6	31.6	17	30.4	17	7.7	42	7.0
PRE-TERM BIRTHS	36	14.6	99	14.7	2	10.0	9	15.5	34	15.2	90	14.8
LOW BIRTHWEIGHT	12	4.8	46	6.8	1	5.0	9	15.5	11	4.9	37	6.1

Note: Unknown responses are excluded from the denominator when calculating percentages.

¹ Crude birth rate per 1,000 population. Population estimates by race by census area are inconsistent. Therefore, three-year rates by race are not reported.

² Teen birth rate per 1,000 female population ages 15-17, 18-19, and 15-19, respectively.

³ Fertility rate per 1,000 female population ages 15-44. Population estimates by race by census area are inconsistent. Therefore, three-year rates by race are not reported.

* Rates based on fewer than 10 occurrences are statistically unreliable and should be used with caution.

** Data suppressed for confidentiality concerns if total births to residents, by either race, is less than five observations.

TABLE 2 **SELECTED BIRTH STATISTICS REPORTED BY MOTHER'S RACE:**
2005 AND 2003–2005
NORTH SLOPE BOROUGH

	TOTAL				WHITE				NATIVE			
	2005 NUMBER	2005 RATE*	2003–2005 NUMBER	2003–2005 RATE*	2005 NUMBER	2005 RATE*	2003–2005 NUMBER	2003–2005 RATE*	2005 NUMBER	2005 RATE*	2003–2005 NUMBER	2003–2005 RATE*
BIRTH RATES												
CRUDE BIRTH RATE ¹	175	25.4	506	23.7	9	6.0*	37		154	31.9	441	
TEEN BIRTH RATE ²												
15–17	20	90.5	41	59.9	0		1		19		39	
18–19	20	161.3	62	160.2	1		2		19		59	
15–19	40	115.9	103	96.2	1	23.8*	3		38	133.8	98	
FERTILITY RATE ³	175	122.2	506	113.8	9	30.5*	37		154	150.2	441	
BIRTHS												
WITHIN AREA	62	100.0	159	100.0	2	3.2	4	2.5	52	83.9	144	90.6
TO RESIDENTS	175	100.0	506	100.0	9	5.1	37	7.3	154	88.0	441	87.2
FACILITY												
HOSPITAL	171	97.7	491	97.0	8	88.9	29	78.4	153	99.4	437	99.1
BIRTHING CENTER	0	0.0	2	0.4	0	0.0	1	2.7	0	0.0	1	0.2
HOME	1	0.6	2	0.4	0	0.0	0	0.0	0	0.0	1	0.2
OTHER	1	0.6	1	0.2	0	0.0	0	0.0	1	0.6	1	0.2
OUTSIDE ALASKA	2	1.1	10	2.0	1	11.1	7	18.9	0	0.0	1	0.2
MOTHER CHARACTERISTICS												
AGE GROUP												
<15	3	1.7	4	0.8	0	0.0	0	0.0	3	1.9	4	0.9
15–19	40	23.0	103	20.5	1	12.5	3	8.8	38	24.7	98	22.2
20–24	64	36.8	164	32.6	0	0.0	5	14.7	60	39.0	153	34.7
25–29	32	18.4	123	24.5	1	12.5	9	26.5	30	19.5	107	24.3
30–34	15	8.6	60	11.9	2	25.0	7	20.6	11	7.1	46	10.4
35–39	19	10.9	45	8.9	4	50.0	10	29.4	12	7.8	30	6.8
40–44	1	0.6	4	0.8	0	0.0	0	0.0	0	0.0	3	0.7
45+	0	0.0	0	0.0	0	0.0	0	0.0	0	0.0	0	0.0
REPORTED DRINKING	7	4.0	23	4.6	1	11.1	2	5.7	6	3.9	21	4.8
REPORTED SMOKING	81	46.3	224	44.6	1	11.1	3	8.6	79	51.3	220	50.1
UNWED	123	70.3	336	66.4	1	11.1	6	16.2	116	75.3	321	72.8
EDUCATION												
<12 YEARS	56	32.4	136	27.3	1	12.5	2	6.1	54	35.3	133	30.4
12 YEARS	83	48.0	268	53.8	1	12.5	9	27.3	78	51.0	249	57.0
12+ YEARS	34	19.7	94	18.9	6	75.0	22	66.7	21	13.7	55	12.6
PRENATAL CARE												
TRIMESTER CARE BEGAN												
1ST TRIMESTER	113	66.1	321	65.9	7	87.5	31	86.1	100	65.8	273	64.1
3RD TRIMESTER	12	7.0	46	9.4	1	12.5	3	8.3	11	7.2	42	9.9
NO PRENATAL CARE	1	0.6	6	1.2	0	0.0	0	0.0	1	0.7	6	1.4
APNCU INDEX												
ADEQUATE+	17	10.1	44	9.1	2	28.6	6	17.6	14	9.2	33	7.7
ADEQUATE	45	26.6	114	23.5	3	42.9	13	38.2	38	25.0	93	21.7
INTERMEDIATE	56	33.1	153	31.5	1	14.3	10	29.4	53	34.9	139	32.5
INADEQUATE	51	30.2	174	35.9	1	14.3	5	14.7	47	30.9	163	38.1
C-SECTION BIRTHS	13	7.4	41	8.1	1	11.1	8	21.6	10	6.5	26	5.9
PRE-TERM BIRTHS	25	14.3	71	14.1	2	22.2	5	13.5	22	14.3	63	14.4
LOW BIRTHWEIGHT	11	6.3	26	5.2	1	11.1	3	8.1	9	5.8	20	4.6

Note: Unknown responses are excluded from the denominator when calculating percentages.

¹ Crude birth rate per 1,000 population. Population estimates by race by census area are inconsistent. Therefore, three-year rates by race are not reported.

² Teen birth rate per 1,000 female population ages 15–17, 18–19, and 15–19, respectively.

³ Fertility rate per 1,000 female population ages 15–44. Population estimates by race by census area are inconsistent. Therefore, three-year rates by race are not reported.

* Rates based on fewer than 10 occurrences are statistically unreliable and should be used with caution.

** Data suppressed for confidentiality concerns if total births to residents, by either race, is less than five observations.

**TABLE 2 SELECTED BIRTH STATISTICS REPORTED BY MOTHER'S RACE:
2005 AND 2003-2005
NORTHWEST ARCTIC BOROUGH**

	TOTAL				WHITE				NATIVE			
	2005 NUMBER	2005 RATE*	2003-2005 NUMBER	2003-2005 RATE*	2005 NUMBER	2005 RATE*	2003-2005 NUMBER	2003-2005 RATE*	2005 NUMBER	2005 RATE*	2003-2005 NUMBER	2003-2005 RATE*
BIRTH RATES												
CRUDE BIRTH RATE ¹	199	27.2	531	24.1	13	10.4	30		184	31.2	496	
TEEN BIRTH RATE ²												
15-17	11	40.7	36	44.9	0		0		11		36	
18-19	27	188.8	66	153.8	0		0		27		66	
15-19	38	92.0	102	82.9	0	0.0	0		38	102.7	102	
FERTILITY RATE ³	199	130.5	531	116.7	13	53.7	30		184	147.8	496	

	TOTAL				WHITE				NATIVE			
	2005 NUMBER	2005 %	2003-2005 NUMBER	2003-2005 %	2005 NUMBER	2005 %	2003-2005 NUMBER	2003-2005 %	2005 NUMBER	2005 %	2003-2005 NUMBER	2003-2005 %
BIRTHS												
WITHIN AREA	70	100.0	228	100.0	2	2.9	7	3.1	67	95.7	219	96.1
TO RESIDENTS	199	100.0	531	100.0	13	6.5	30	5.6	184	92.5	496	93.4
FACILITY												
HOSPITAL	195	98.0	524	98.7	9	69.2	23	76.7	184	100.0	496	100.0
BIRTHING CENTER	0	0.0	0	0.0	0	0.0	0	0.0	0	0.0	0	0.0
HOME	0	0.0	0	0.0	0	0.0	0	0.0	0	0.0	0	0.0
OTHER	0	0.0	0	0.0	0	0.0	0	0.0	0	0.0	0	0.0
OUTSIDE ALASKA	4	2.0	7	1.3	4	30.8	7	23.3	0	0.0	0	0.0
MOTHER CHARACTERISTICS												
AGE GROUP												
<15	1	0.5	4	0.8	0	0.0	0	0.0	1	0.5	4	0.8
15-19	38	19.1	102	19.2	0	0.0	0	0.0	38	20.7	102	20.6
20-24	68	34.2	169	31.8	0	0.0	3	10.0	66	35.9	164	33.1
25-29	36	18.1	112	21.1	5	38.5	11	36.7	31	16.8	100	20.2
30-34	32	16.1	87	16.4	5	38.5	9	30.0	27	14.7	76	15.3
35-39	20	10.1	45	8.5	3	23.1	6	20.0	17	9.2	39	7.9
40-44	3	1.5	11	2.1	0	0.0	1	3.3	3	1.6	10	2.0
45+	1	0.5	1	0.2	0	0.0	0	0.0	1	0.5	1	0.2
REPORTED DRINKING	13	6.7	23	4.4	0	0.0	1	3.7	13	7.1	22	4.5
REPORTED SMOKING	96	48.5	235	44.6	2	15.4	5	16.7	92	50.3	228	46.3
UNWED	126	63.3	366	68.9	1	7.7	5	16.7	123	66.8	358	72.2
EDUCATION												
<12 YEARS	72	37.1	194	37.7	0	0.0	1	3.6	72	40.0	193	40.0
12 YEARS	100	51.5	260	50.6	3	25.0	6	21.4	95	52.8	252	52.3
12+ YEARS	22	11.3	60	11.7	9	75.0	21	75.0	13	7.2	37	7.7
PRENATAL CARE												
TRIMESTER CARE BEGAN												
1ST TRIMESTER	141	71.6	368	70.6	10	83.3	24	82.8	129	70.5	340	69.7
3RD TRIMESTER	10	5.1	24	4.6	1	8.3	2	6.9	9	4.9	22	4.5
NO PRENATAL CARE	0	0.0	4	0.8	0	0.0	0	0.0	0	0.0	4	0.8
APNCU INDEX												
ADEQUATE+	36	18.4	93	17.8	2	16.7	7	25.0	33	18.1	85	17.3
ADEQUATE	50	25.5	134	25.7	3	25.0	8	28.6	47	25.8	124	25.3
INTERMEDIATE	60	30.6	148	28.4	5	41.7	8	28.6	54	29.7	139	28.4
INADEQUATE	50	25.5	147	28.2	2	16.7	5	17.9	48	26.4	142	29.0
C-SECTION BIRTHS	19	9.6	48	9.1	4	30.8	6	20.0	14	7.7	40	8.1
PRE-TERM BIRTHS	24	12.1	56	10.5	3	23.1	4	13.3	20	10.9	51	10.3
LOW BIRTHWEIGHT	16	8.0	33	6.2	2	15.4	4	13.3	13	7.1	28	5.7

Note: Unknown responses are excluded from the denominator when calculating percentages.

¹ Crude birth rate per 1,000 population. Population estimates by race by census area are inconsistent. Therefore, three-year rates by race are not reported.

² Teen birth rate per 1,000 female population ages 15-17, 18-19, and 15-19, respectively.

³ Fertility rate per 1,000 female population ages 15-44. Population estimates by race by census area are inconsistent. Therefore, three-year rates by race are not reported.

* Rates based on fewer than 10 occurrences are statistically unreliable and should be used with caution.

** Data suppressed for confidentiality concerns if total births to residents, by either race, is less than five observations.

TABLE 2 **SELECTED BIRTH STATISTICS REPORTED BY MOTHER'S RACE**
2005 AND 2003-2005
PRINCE OF WALES-OUTER KETCHIKAN CENSUS AREA

	TOTAL				WHITE				NATIVE			
	2005 NUMBER	2005 RATE*	2003-2005 NUMBER	2003-2005 RATE*	2005 NUMBER	2005 RATE*	2003-2005 NUMBER	2003-2005 RATE*	2005 NUMBER	2005 RATE*	2003-2005 NUMBER	2003-2005 RATE*
BIRTH RATES												
CRUDE BIRTH RATE ¹	70	12.7	174	10.4	29	9.3	68		39	17.1	99	
TEEN BIRTH RATE ²												
15-17	3	16.9*	8	15.5*	0		1		3		7	
18-19	7	102.9*	21	102.9	1		6		6		15	
15-19	10	40.8	29	40.3	1	7.8*	7		9	81.1*	22	
FERTILITY RATE ³	70	68.2	174	54.9	29	51.2	68		39	88.2	99	
BIRTHS												
WITHIN AREA	0	0.0	5	100.0	0	0.0	4	80.0	0	0.0	1	20.0
TO RESIDENTS	70	100.0	174	100.0	29	41.4	68	39.1	39	55.7	99	56.9
FACILITY												
HOSPITAL	67	95.7	152	87.4	26	89.7	53	77.9	39	100.0	94	94.9
BIRTHING CENTER	0	0.0	2	1.1	0	0.0	1	1.5	0	0.0	0	0.0
HOME	2	2.9	14	8.0	2	6.9	11	16.2	0	0.0	3	3.0
OTHER	0	0.0	2	1.1	0	0.0	1	1.5	0	0.0	1	1.0
OUTSIDE ALASKA	1	1.4	4	2.3	1	3.4	2	2.9	0	0.0	1	1.0
MOTHER CHARACTERISTICS												
AGE GROUP												
<15	0	0.0	0	0.0	0	0.0	0	0.0	0	0.0	0	0.0
15-19	10	14.3	29	16.8	1	3.4	7	10.3	9	23.1	22	22.2
20-24	25	35.7	61	35.3	10	34.5	22	32.4	15	38.5	38	38.4
25-29	14	20.0	32	18.5	4	13.8	12	17.6	8	20.5	17	17.2
30-34	13	18.6	33	19.1	9	31.0	18	26.5	4	10.3	15	15.2
35-39	4	5.7	13	7.5	1	3.4	5	7.4	3	7.7	6	6.1
40-44	4	5.7	5	2.9	4	13.8	4	5.9	0	0.0	1	1.0
45+	0	0.0	0	0.0	0	0.0	0	0.0	0	0.0	0	0.0
REPORTED DRINKING	1	1.4	2	1.2	0	0.0	1	1.5	1	2.6	1	1.0
REPORTED SMOKING	18	25.7	34	19.7	10	34.5	19	27.9	8	20.5	14	14.1
UNWED	36	51.4	89	51.1	10	34.5	23	33.8	26	66.7	64	64.6
EDUCATION												
<12 YEARS	8	12.3	24	14.5	1	3.7	5	7.6	7	19.4	19	20.4
12 YEARS	31	47.7	84	50.6	13	48.1	32	48.5	18	50.0	50	53.8
12+ YEARS	26	40.0	58	34.9	13	48.1	29	43.9	11	30.6	24	25.8
PRENATAL CARE												
TRIMESTER CARE BEGAN												
1ST TRIMESTER	56	80.0	126	72.8	21	72.4	46	67.6	33	84.6	76	77.6
3RD TRIMESTER	0	0.0	7	4.0	0	0.0	2	2.9	0	0.0	4	4.1
NO PRENATAL CARE	0	0.0	0	0.0	0	0.0	0	0.0	0	0.0	0	0.0
APNCU INDEX												
ADEQUATE+	14	20.0	34	19.7	4	13.8	12	17.6	10	25.6	21	21.4
ADEQUATE	39	55.7	85	49.1	15	51.7	31	45.6	23	59.0	52	53.1
INTERMEDIATE	12	17.1	28	16.2	6	20.7	13	19.1	5	12.8	14	14.3
INADEQUATE	5	7.1	26	15.0	4	13.8	12	17.6	1	2.6	11	11.2
C-SECTION BIRTHS	21	30.0	42	24.1	11	37.9	20	29.4	10	25.6	21	21.2
PRE-TERM BIRTHS	7	10.0	16	9.2	1	3.4	5	7.4	6	15.4	10	10.1
LOW BIRTHWEIGHT	0	0.0	4	2.3	0	0.0	3	4.4	0	0.0	0	0.0

Note: Unknown responses are excluded from the denominator when calculating percentages.

¹ Crude birth rate per 1,000 population. Population estimates by race by census area are inconsistent. Therefore, three-year rates by race are not reported.

² Teen birth rate per 1,000 female population ages 15-17, 18-19, and 15-19, respectively.

³ Fertility rate per 1,000 female population ages 15-44. Population estimates by race by census area are inconsistent. Therefore, three-year rates by race are not reported.

* Rates based on fewer than 10 occurrences are statistically unreliable and should be used with caution.

** Data suppressed for confidentiality concerns if total births to residents, by either race, is less than five observations.

TABLE 2 **SELECTED BIRTH STATISTICS REPORTED BY MOTHER'S RACE:**
2005 AND 2003-2005
SITKA BOROUGH

	TOTAL				WHITE				NATIVE			
	2005 NUMBER	2005 RATE*	2003-2005 NUMBER	2003-2005 RATE*	2005 NUMBER	2005 RATE*	2003-2005 NUMBER	2003-2005 RATE*	2005 NUMBER	2005 RATE*	2003-2005 NUMBER	2003-2005 RATE*
BIRTH RATES												
CRUDE BIRTH RATE ¹	116	13.0	346	12.9	76	11.9	216		33	16.5	101	
TEEN BIRTH RATE²												
15-17	0	0.0	5	7.2*	0		1		0		4	
18-19	8	65.0*	25	65.6	5		14		3		10	
15-19	8	22.8*	30	28.0	5	21.9*	15		3	30.0*	14	
FERTILITY RATE ³	116	64.0	346	63.0	76	60.4	216		33	76.4	101	

	TOTAL				WHITE				NATIVE			
	2005 NUMBER	2005 %	2003-2005 NUMBER	2003-2005 %	2005 NUMBER	2005 %	2003-2005 NUMBER	2003-2005 %	2005 NUMBER	2005 %	2003-2005 NUMBER	2003-2005 %
BIRTHS												
WITHIN AREA	122	100.0	352	100.0	75	61.5	210	59.7	39	32.0	115	32.7
TO RESIDENTS	116	100.0	346	100.0	76	65.5	216	62.4	33	28.4	101	29.2
FACILITY												
HOSPITAL	111	95.7	335	96.8	73	96.1	208	96.3	31	93.9	99	98.0
BIRTHING CENTER	0	0.0	0	0.0	0	0.0	0	0.0	0	0.0	0	0.0
HOME	4	3.4	5	1.4	2	2.6	2	0.9	2	6.1	2	2.0
OTHER	0	0.0	0	0.0	0	0.0	0	0.0	0	0.0	0	0.0
OUTSIDE ALASKA	1	0.9	6	1.7	1	1.3	6	2.8	0	0.0	0	0.0
MOTHER CHARACTERISTICS												
AGE GROUP												
<15	0	0.0	0	0.0	0	0.0	0	0.0	0	0.0	0	0.0
15-19	8	6.9	30	8.7	5	6.6	15	6.9	3	9.1	14	13.9
20-24	28	24.1	81	23.4	20	26.3	43	19.9	6	18.2	32	31.7
25-29	39	33.6	101	29.2	22	28.9	60	27.8	14	42.4	30	29.7
30-34	24	20.7	74	21.4	13	17.1	52	24.1	9	27.3	18	17.8
35-39	13	11.2	47	13.6	12	15.8	37	17.1	1	3.0	5	5.0
40-44	4	3.4	13	3.8	4	5.3	9	4.2	0	0.0	2	2.0
45+	0	0.0	0	0.0	0	0.0	0	0.0	0	0.0	0	0.0
REPORTED DRINKING	4	3.5	10	2.9	3	4.0	7	3.3	1	3.0	3	3.0
REPORTED SMOKING	7	6.0	31	9.0	4	5.3	13	6.0	3	9.1	16	15.8
UNWED	37	31.9	119	34.5	16	21.1	52	24.1	20	60.6	62	61.4
EDUCATION												
<12 YEARS	8	7.0	25	7.4	2	2.7	10	4.7	6	18.2	14	14.1
12 YEARS	44	38.6	126	37.3	24	32.4	62	29.2	16	48.5	52	52.5
12+ YEARS	62	54.4	187	55.3	48	64.9	140	66.0	11	33.3	33	33.3
PRENATAL CARE												
TRIMESTER CARE BEGAN												
1ST TRIMESTER	97	84.3	261	76.8	63	82.9	162	76.1	28	87.5	79	79.0
3RD TRIMESTER	1	0.9	18	5.3	1	1.3	12	5.6	0	0.0	5	5.0
NO PRENATAL CARE	2	1.7	2	0.6	1	1.3	1	0.5	1	3.0	1	1.0
APNCU INDEX												
ADEQUATE+	39	33.6	94	27.6	24	31.6	48	22.6	12	36.4	35	34.7
ADEQUATE	49	42.2	140	41.2	33	43.4	95	44.8	13	39.4	37	36.6
INTERMEDIATE	17	14.7	49	14.4	12	15.8	34	16.0	5	15.2	10	9.9
INADEQUATE	11	9.5	57	16.8	7	9.2	35	16.5	3	9.1	19	18.8
C-SECTION BIRTHS	30	26.1	92	27.2	23	30.3	64	30.2	6	18.8	21	21.4
PRE-TERM BIRTHS	8	6.9	31	9.0	3	3.9	13	6.0	5	15.2	13	12.9
LOW BIRTHWEIGHT	3	2.6	16	4.6	2	2.6	9	4.2	1	3.0	4	4.0

Note: Unknown responses are excluded from the denominator when calculating percentages.

¹ Crude birth rate per 1,000 population. Population estimates by race by census area are inconsistent. Therefore, three-year rates by race are not reported.

² Teen birth rate per 1,000 female population ages 15-17, 18-19, and 15-19, respectively.

³ Fertility rate per 1,000 female population ages 15-44. Population estimates by race by census area are inconsistent. Therefore, three-year rates by race are not reported.

* Rates based on fewer than 10 occurrences are statistically unreliable and should be used with caution.

** Data suppressed for confidentiality concerns if total births to residents, by either race, is less than five observations.

**TABLE 2 SELECTED BIRTH STATISTICS REPORTED BY MOTHER'S RACE:
2005 AND 2003-2005
SKAGWAY-HOONAH-ANGOON CENSUS AREA**

	TOTAL				WHITE				NATIVE			
	2005 NUMBER	2005 RATE*	2003-2005 NUMBER	2003-2005 RATE*	2005 NUMBER	2005 RATE*	2003-2005 NUMBER	2003-2005 RATE*	2005 NUMBER	2005 RATE*	2003-2005 NUMBER	2003-2005 RATE*
BIRTH RATES												
CRUDE BIRTH RATE ¹	36	11.8	98	10.4	17	9.0	44		19	17.7	46	
TEEN BIRTH RATE ²												
15-17	2	27.0*	2	8.7*	0		0		2		2	
18-19	2	58.8*	4	36.7*	1		1		1		3	
15-19	4	37.0*	6	17.8*	1	19.6*	1		3	56.6*	5	
FERTILITY RATE ³	36	66.7	98	56.4	17	53.6	44		19	90.5	46	

	TOTAL				WHITE				NATIVE			
	2005 NUMBER	2005 %	2003-2005 NUMBER	2003-2005 %	2005 NUMBER	2005 %	2003-2005 NUMBER	2003-2005 %	2005 NUMBER	2005 %	2003-2005 NUMBER	2003-2005 %
BIRTHS												
WITHIN AREA	2	100.0	3	100.0	1	50.0	1	33.3	0	0.0	1	33.3
TO RESIDENTS	36	100.0	98	100.0	17	47.2	44	44.9	19	52.8	46	46.9
FACILITY												
HOSPITAL	29	80.6	72	73.5	10	58.8	27	61.4	19	100.0	44	95.7
BIRTHING CENTER	6	16.7	14	14.3	6	35.3	12	27.3	0	0.0	1	2.2
HOME	1	2.8	1	1.0	1	5.9	1	2.3	0	0.0	0	0.0
OTHER	0	0.0	2	2.0	0	0.0	1	2.3	0	0.0	1	2.2
OUTSIDE ALASKA	0	0.0	9	9.2	0	0.0	3	6.8	0	0.0	0	0.0
MOTHER CHARACTERISTICS												
AGE GROUP												
<15	0	0.0	0	0.0	0	0.0	0	0.0	0	0.0	0	0.0
15-19	4	11.1	6	6.1	1	5.9	1	2.3	3	15.8	5	10.9
20-24	11	30.6	32	32.7	2	11.8	11	25.0	9	47.4	21	45.7
25-29	10	27.8	29	29.6	6	35.3	13	29.5	4	21.1	13	28.3
30-34	8	22.2	21	21.4	5	29.4	12	27.3	3	15.8	6	13.0
35-39	2	5.6	8	8.2	2	11.8	5	11.4	0	0.0	1	2.2
40-44	1	2.8	2	2.0	1	5.9	2	4.5	0	0.0	0	0.0
45+	0	0.0	0	0.0	0	0.0	0	0.0	0	0.0	0	0.0
REPORTED DRINKING	0	0.0	1	1.1	0	0.0	1	2.4	0	0.0	0	0.0
REPORTED SMOKING	4	11.4	16	17.8	0	0.0	5	11.6	4	21.1	11	24.4
UNWED	17	47.2	41	44.6	6	35.3	13	29.5	11	57.9	28	60.9
EDUCATION												
<12 YEARS	4	11.4	15	16.5	0	0.0	1	2.3	4	22.2	14	31.1
12 YEARS	16	45.7	38	41.8	6	35.3	15	34.1	10	55.6	23	51.1
12+ YEARS	15	42.9	38	41.8	11	64.7	28	63.6	4	22.2	8	17.8
PRENATAL CARE												
TRIMESTER CARE BEGAN												
1ST TRIMESTER	30	85.7	69	84.1	12	75.0	31	77.5	18	94.7	37	92.5
3RD TRIMESTER	0	0.0	3	3.7	0	0.0	0	0.0	0	0.0	2	5.0
NO PRENATAL CARE	0	0.0	0	0.0	0	0.0	0	0.0	0	0.0	0	0.0
APNCU INDEX												
ADEQUATE+	5	14.3	18	23.1	1	6.3	7	18.9	4	21.1	11	28.2
ADEQUATE	15	42.9	25	32.1	10	62.5	16	43.2	5	26.3	8	20.5
INTERMEDIATE	11	31.4	22	28.2	3	18.8	8	21.6	8	42.1	14	35.9
INADEQUATE	4	11.4	13	16.7	2	12.5	6	16.2	2	10.5	6	15.4
C-SECTION BIRTHS	13	36.1	35	38.0	7	41.2	18	40.9	6	31.6	17	37.0
PRE-TERM BIRTHS	1	2.8	11	12.5	0	0.0	4	9.5	1	5.3	7	15.9
LOW BIRTHWEIGHT	1	2.8	5	5.4	0	0.0	1	2.3	1	5.3	4	8.7

Note: Unknown responses are excluded from the denominator when calculating percentages.

¹ Crude birth rate per 1,000 population. Population estimates by race by census area are inconsistent. Therefore, three-year rates by race are not reported.

² Teen birth rate per 1,000 female population ages 15-17, 18-19, and 15-19, respectively.

³ Fertility rate per 1,000 female population ages 15-44. Population estimates by race by census area are inconsistent. Therefore, three-year rates by race are not reported.

* Rates based on fewer than 10 occurrences are statistically unreliable and should be used with caution.

** Data suppressed for confidentiality concerns if total births to residents, by either race, is less than five observations.

**TABLE 2 SELECTED BIRTH STATISTICS REPORTED BY MOTHER'S RACE:
2005 AND 2003-2005
SOUTHEAST FAIRBANKS CENSUS AREA**

	TOTAL				WHITE				NATIVE			
	2005 NUMBER	2005 RATE*	2003-2005 NUMBER	2003-2005 RATE*	2005 NUMBER	2005 RATE*	2003-2005 NUMBER	2003-2005 RATE*	2005 NUMBER	2005 RATE*	2003-2005 NUMBER	2003-2005 RATE*
BIRTH RATES												
CRUDE BIRTH RATE ¹	106	16.4	276	14.8	85	16.1	212		14	14.6	51	
TEEN BIRTH RATE ²												
15-17	2	10.4*	6	11.5*	2		3		0		2	
18-19	8	76.2*	23	79.3	6		17		2		6	
15-19	10	33.7	29	35.8	8	34.0*	20		2	39.2*	8	
FERTILITY RATE ³	106	89.1	276	82.0	85	89.1	212		14	74.5	51	

	TOTAL				WHITE				NATIVE			
	2005 NUMBER	2005 %	2003-2005 NUMBER	2003-2005 %	2005 NUMBER	2005 %	2003-2005 NUMBER	2003-2005 %	2005 NUMBER	2005 %	2003-2005 NUMBER	2003-2005 %
BIRTHS												
WITHIN AREA	7	100.0	18	100.0	7	100.0	17	94.4	0	0.0	0	0.0
TO RESIDENTS	106	100.0	276	100.0	85	80.2	212	76.8	14	13.2	51	18.5
FACILITY												
HOSPITAL	92	86.8	239	86.6	71	83.5	177	83.5	14	100.0	50	98.0
BIRTHING CENTER	7	6.6	17	6.2	7	8.2	16	7.5	0	0.0	1	2.0
HOME	6	5.7	15	5.4	6	7.1	14	6.6	0	0.0	0	0.0
OTHER	1	0.9	3	1.1	1	1.2	3	1.4	0	0.0	0	0.0
OUTSIDE ALASKA	0	0.0	2	0.7	0	0.0	2	0.9	0	0.0	0	0.0
MOTHER CHARACTERISTICS												
AGE GROUP												
<15	0	0.0	0	0.0	0	0.0	0	0.0	0	0.0	0	0.0
15-19	10	9.4	29	10.5	8	9.4	20	9.4	2	14.3	8	15.7
20-24	27	25.5	73	26.4	20	23.5	49	23.1	6	42.9	23	45.1
25-29	23	21.7	56	20.3	19	22.4	45	21.2	3	21.4	10	19.6
30-34	25	23.6	56	20.3	20	23.5	48	22.6	3	21.4	4	7.8
35-39	15	14.2	41	14.9	14	16.5	35	16.5	0	0.0	4	7.8
40-44	6	5.7	20	7.2	4	4.7	14	6.6	0	0.0	2	3.9
45+	0	0.0	1	0.4	0	0.0	1	0.5	0	0.0	0	0.0
REPORTED DRINKING	1	1.0	2	0.7	0	0.0	1	0.5	1	7.1	1	2.0
REPORTED SMOKING	12	11.4	38	13.8	10	11.9	28	13.3	2	14.3	10	19.6
UNWED	25	23.6	77	27.9	13	15.3	32	15.1	12	85.7	44	86.3
EDUCATION												
<12 YEARS	17	16.5	43	16.0	16	18.8	32	15.4	1	9.1	10	20.8
12 YEARS	51	49.5	130	48.3	42	49.4	98	47.1	8	72.7	31	64.6
12+ YEARS	35	34.0	96	35.7	27	31.8	78	37.5	2	18.2	7	14.6
PRENATAL CARE												
TRIMESTER CARE BEGAN												
1ST TRIMESTER	64	64.6	151	59.2	52	65.8	114	58.5	6	46.2	28	57.1
3RD TRIMESTER	5	5.1	22	8.6	3	3.8	18	9.2	2	15.4	4	8.2
NO PRENATAL CARE	1	1.0	2	0.8	1	1.3	2	1.0	0	0.0	0	0.0
APNCU INDEX												
ADEQUATE+	5	5.2	18	7.2	5	6.4	13	6.8	0	0.0	5	10.2
ADEQUATE	34	35.1	71	28.3	26	33.3	57	29.7	5	38.5	11	22.4
INTERMEDIATE	27	27.8	70	27.9	24	30.8	52	27.1	2	15.4	14	28.6
INADEQUATE	31	32.0	92	36.7	23	29.5	70	36.5	6	46.2	19	38.8
C-SECTION BIRTHS	26	24.8	57	20.8	20	23.8	43	20.5	4	28.6	10	19.6
PRE-TERM BIRTHS	14	13.2	32	11.7	11	12.9	23	10.9	2	14.3	7	13.7
LOW BIRTHWEIGHT	5	4.7	12	4.4	3	3.5	9	4.3	0	0.0	1	2.0

Note: Unknown responses are excluded from the denominator when calculating percentages.

¹ Crude birth rate per 1,000 population. Population estimates by race by census area are inconsistent. Therefore, three-year rates by race are not reported.

² Teen birth rate per 1,000 female population ages 15-17, 18-19, and 15-19, respectively.

³ Fertility rate per 1,000 female population ages 15-44. Population estimates by race by census area are inconsistent. Therefore, three-year rates by race are not reported.

* Rates based on fewer than 10 occurrences are statistically unreliable and should be used with caution.

** Data suppressed for confidentiality concerns if total births to residents, by either race, is less than five observations.

TABLE 2 **SELECTED BIRTH STATISTICS REPORTED BY MOTHER'S RACE:**
2005 AND 2003-2005
VALDEZ-CORDOVA CENSUS AREA

	TOTAL				WHITE				NATIVE			
	2005 NUMBER	2005 RATE*	2003-2005 NUMBER	2003-2005 RATE*	2005 NUMBER	2005 RATE*	2003-2005 NUMBER	2003-2005 RATE*	2005 NUMBER	2005 RATE*	2003-2005 NUMBER	2003-2005 RATE*
BIRTH RATES												
CRUDE BIRTH RATE ¹	121	12.0	360	11.9	82	10.4	257		33	20.4	79	
TEEN BIRTH RATE ²												
15-17	3	10.2*	8	9.2*	0		1		3		7	
18-19	5	34.7*	20	45.7	4		15		1		4	
15-19	8	18.3*	28	21.4	4	12.5*	16		4	40.0*	11	
FERTILITY RATE ³	121	63.0	360	61.0	82	55.2	257		33	97.3	79	
BIRTHS												
WITHIN AREA	46	100.0	118	100.0	33	71.7	92	78.0	9	19.6	13	11.0
TO RESIDENTS	121	100.0	360	100.0	82	67.8	257	71.4	33	27.3	79	21.9
FACILITY												
HOSPITAL	102	84.3	309	85.8	64	78.0	209	81.3	33	100.0	79	100.0
BIRTHING CENTER	10	8.3	26	7.2	9	11.0	24	9.3	0	0.0	0	0.0
HOME	6	5.0	18	5.0	6	7.3	17	6.6	0	0.0	0	0.0
OTHER	1	0.8	1	0.3	1	1.2	1	0.4	0	0.0	0	0.0
OUTSIDE ALASKA	2	1.7	6	1.7	2	2.4	6	2.3	0	0.0	0	0.0
MOTHER CHARACTERISTICS												
AGE GROUP												
<15	0	0.0	0	0.0	0	0.0	0	0.0	0	0.0	0	0.0
15-19	8	6.6	28	7.8	4	4.9	16	6.2	4	12.1	11	13.9
20-24	33	27.3	92	25.6	21	25.6	59	23.0	12	36.4	29	36.7
25-29	32	26.4	89	24.7	18	22.0	58	22.6	10	30.3	20	25.3
30-34	28	23.1	90	25.0	23	28.0	74	28.8	3	9.1	12	15.2
35-39	16	13.2	49	13.6	14	17.1	42	16.3	2	6.1	5	6.3
40-44	4	3.3	12	3.3	2	2.4	8	3.1	2	6.1	2	2.5
45+	0	0.0	0	0.0	0	0.0	0	0.0	0	0.0	0	0.0
REPORTED DRINKING	3	2.5	9	2.5	2	2.5	7	2.8	0	0.0	1	1.3
REPORTED SMOKING	10	8.3	38	10.7	4	4.9	22	8.7	6	18.2	15	19.0
UNWED	34	28.1	98	27.3	15	18.3	49	19.1	19	57.6	46	58.2
EDUCATION												
<12 YEARS	17	14.3	41	11.7	7	8.5	20	7.9	10	32.3	20	26.3
12 YEARS	46	38.7	126	36.1	26	31.7	76	30.2	17	54.8	42	55.3
12+ YEARS	56	47.1	182	52.1	49	59.8	156	61.9	4	12.9	14	18.4
PRENATAL CARE												
TRIMESTER CARE BEGAN												
1ST TRIMESTER	98	81.7	282	81.5	68	82.9	210	84.3	26	81.3	57	74.0
3RD TRIMESTER	5	4.2	15	4.3	3	3.7	11	4.4	1	3.1	3	3.9
NO PRENATAL CARE	1	0.9	2	0.6	0	0.0	1	0.4	1	3.1	1	1.3
APNCU INDEX												
ADEQUATE+	18	15.9	58	17.8	10	13.2	42	18.1	6	18.8	12	15.6
ADEQUATE	47	41.6	118	36.2	30	39.5	86	37.1	15	46.9	29	37.7
INTERMEDIATE	30	26.5	85	26.1	23	30.3	59	25.4	7	21.9	21	27.3
INADEQUATE	18	15.9	65	19.9	13	17.1	45	19.4	4	12.5	15	19.5
C-SECTION BIRTHS	25	20.7	72	20.0	18	22.0	52	20.2	6	18.2	16	20.3
PRE-TERM BIRTHS	5	4.1	26	7.3	4	4.9	18	7.1	1	3.0	7	8.9
LOW BIRTHWEIGHT	3	2.5	19	5.4	3	3.7	13	5.1	0	0.0	4	5.1

Note: Unknown responses are excluded from the denominator when calculating percentages.

¹ Crude birth rate per 1,000 population. Population estimates by race by census area are inconsistent. Therefore, three-year rates by race are not reported.

² Teen birth rate per 1,000 female population ages 15-17, 18-19, and 15-19, respectively.

³ Fertility rate per 1,000 female population ages 15-44. Population estimates by race by census area are inconsistent. Therefore, three-year rates by race are not reported.

* Rates based on fewer than 10 occurrences are statistically unreliable and should be used with caution.

** Data suppressed for confidentiality concerns if total births to residents, by either race, is less than five observations.

**TABLE 2 SELECTED BIRTH STATISTICS REPORTED BY MOTHER'S RACE:
2005 AND 2003-2005
WADE HAMPTON CENSUS AREA**

	TOTAL				WHITE				NATIVE			
	2005 NUMBER	2005 RATE*	2003-2005 NUMBER	2003-2005 RATE*	2005 NUMBER	2005 RATE*	2003-2005 NUMBER	2003-2005 RATE*	2005 NUMBER	2005 RATE*	2003-2005 NUMBER	2003-2005 RATE*
BIRTH RATES												
CRUDE BIRTH RATE ¹	227	30.3	669	29.9	3	5.0*	13		224	32.9	655	
TEEN BIRTH RATE ²												
15-17	10	35.6	34	40.6	0		0		10		34	
18-19	33	242.6	88	214.1	0		0		33		88	
15-19	43	103.1	122	97.7	0	0.0	0		43	108.9	122	
FERTILITY RATE ³	227	156.4	669	153.5	3	25.4*	13		224	168.8	655	

	TOTAL				WHITE				NATIVE			
	2005 NUMBER	2005 %	2003-2005 NUMBER	2003-2005 %	2005 NUMBER	2005 %	2003-2005 NUMBER	2003-2005 %	2005 NUMBER	2005 %	2003-2005 NUMBER	2003-2005 %
BIRTHS												
WITHIN AREA	5	100.0	16	100.0	0	0.0	0	0.0	5	100.0	15	93.8
TO RESIDENTS	227	100.0	669	100.0	3	1.3	13	1.9	224	98.7	655	97.9
FACILITY												
HOSPITAL	220	96.9	655	97.9	2	66.7	8	61.5	218	97.3	646	98.6
BIRTHING CENTER	0	0.0	0	0.0	0	0.0	0	0.0	0	0.0	0	0.0
HOME	0	0.0	1	0.1	0	0.0	1	7.7	0	0.0	0	0.0
OTHER	5	2.2	8	1.2	0	0.0	0	0.0	5	2.2	8	1.2
OUTSIDE ALASKA	2	0.9	5	0.7	1	33.3	4	30.8	1	0.4	1	0.2
MOTHER CHARACTERISTICS												
AGE GROUP												
<15	0	0.0	0	0.0	**		0	0.0	**		0	0.0
15-19	43	18.9	122	18.3	**		0	0.0	**		122	18.6
20-24	67	29.5	199	29.8	**		1	9.1	**		197	30.1
25-29	60	26.4	155	23.2	**		8	72.7	**		147	22.4
30-34	34	15.0	103	15.4	**		1	9.1	**		102	15.6
35-39	13	5.7	68	10.2	**		1	9.1	**		67	10.2
40-44	10	4.4	18	2.7	**		0	0.0	**		18	2.7
45+	0	0.0	2	0.3	**		0	0.0	**		2	0.3
REPORTED DRINKING	14	6.3	33	5.0	**		0	0.0	**		33	5.1
REPORTED SMOKING	64	28.3	181	27.2	**		0	0.0	**		181	27.8
UNWED	161	70.9	446	66.7	**		0	0.0	**		445	67.9
EDUCATION												
<12 YEARS	66	30.3	200	30.7	**		0	0.0	**		199	31.2
12 YEARS	136	62.4	393	60.3	**		3	23.1	**		390	61.1
12+ YEARS	16	7.3	59	9.0	**		10	76.9	**		49	7.7
PRENATAL CARE												
TRIMESTER CARE BEGAN												
1ST TRIMESTER	99	45.0	341	53.8	**		13	100.0	**		328	52.9
3RD TRIMESTER	30	13.6	68	10.7	**		0	0.0	**		68	11.0
NO PRENATAL CARE	1	0.5	5	0.8	**		0	0.0	**		5	0.8
APNCU INDEX												
ADEQUATE+	9	4.1	23	3.6	**		1	7.7	**		22	3.6
ADEQUATE	23	10.5	69	10.9	**		7	53.8	**		62	10.0
INTERMEDIATE	54	24.7	185	29.3	**		4	30.8	**		180	29.2
INADEQUATE	133	60.7	354	56.1	**		1	7.7	**		353	57.2
C-SECTION BIRTHS	19	8.5	50	7.5	**		1	7.7	**		49	7.5
PRE-TERM BIRTHS	32	14.1	97	14.5	**		1	7.7	**		96	14.7
LOW BIRTHWEIGHT	11	4.9	48	7.2	**		0	0.0	**		48	7.4

Note: Unknown responses are excluded from the denominator when calculating percentages.

¹ Crude birth rate per 1,000 population. Population estimates by race by census area are inconsistent. Therefore, three-year rates by race are not reported.

² Teen birth rate per 1,000 female population ages 15-17, 18-19, and 15-19, respectively.

³ Fertility rate per 1,000 female population ages 15-44. Population estimates by race by census area are inconsistent. Therefore, three-year rates by race are not reported.

* Rates based on fewer than 10 occurrences are statistically unreliable and should be used with caution.

** Data suppressed for confidentiality concerns if total births to residents, by either race, is less than five observations.

**TABLE 2 SELECTED BIRTH STATISTICS REPORTED BY MOTHER'S RACE:
2005 AND 2003-2005
WRANGELL-PETERSBURG CENSUS AREA**

	TOTAL				WHITE				NATIVE			
	2005 NUMBER	2005 RATE*	2003-2005 NUMBER	2003-2005 RATE*	2005 NUMBER	2005 RATE*	2003-2005 NUMBER	2003-2005 RATE*	2005 NUMBER	2005 RATE*	2003-2005 NUMBER	2003-2005 RATE*
BIRTH RATES												
CRUDE BIRTH RATE ¹	61	9.9	191	10.1	39	8.1	133		17	15.0		46
TEEN BIRTH RATE ²												
15-17	0	0.0	5	9.1*	0		2		0			3
18-19	5	67.6*	13	58.0	4		8		1			5
15-19	5	19.2*	18	23.3	4	21.2*	10		1	16.9*		8
FERTILITY RATE ³	61	55.5	191	56.0	39	47.3	133		17	73.0		46

	TOTAL				WHITE				NATIVE			
	2005 NUMBER	2005 %	2003-2005 NUMBER	2003-2005 %	2005 NUMBER	2005 %	2003-2005 NUMBER	2003-2005 %	2005 NUMBER	2005 %	2003-2005 NUMBER	2003-2005 %
BIRTHS												
WITHIN AREA	18	100.0	68	100.0	10	55.6	48	70.6	7	38.9	16	23.5
TO RESIDENTS	61	100.0	191	100.0	39	63.9	133	69.6	17	27.9	46	24.1
FACILITY												
HOSPITAL	57	93.4	177	92.7	36	92.3	122	91.7	17	100.0	46	100.0
BIRTHING CENTER	1	1.6	1	0.5	1	2.6	1	0.8	0	0.0	0	0.0
HOME	0	0.0	0	0.0	0	0.0	0	0.0	0	0.0	0	0.0
OTHER	0	0.0	0	0.0	0	0.0	0	0.0	0	0.0	0	0.0
OUTSIDE ALASKA	3	4.9	13	6.8	2	5.1	10	7.5	0	0.0	0	0.0
MOTHER CHARACTERISTICS												
AGE GROUP												
<15	0	0.0	0	0.0	0	0.0	0	0.0	0	0.0	0	0.0
15-19	5	8.2	18	9.4	4	10.3	10	7.5	1	5.9	8	17.4
20-24	13	21.3	41	21.5	4	10.3	21	15.8	8	47.1	19	41.3
25-29	17	27.9	57	29.8	10	25.6	40	30.1	6	35.3	14	30.4
30-34	17	27.9	49	25.7	14	35.9	39	29.3	1	5.9	4	8.7
35-39	6	9.8	18	9.4	4	10.3	16	12.0	1	5.9	1	2.2
40-44	3	4.9	8	4.2	3	7.7	7	5.3	0	0.0	0	0.0
45+	0	0.0	0	0.0	0	0.0	0	0.0	0	0.0	0	0.0
REPORTED DRINKING	1	1.8	2	1.1	0	0.0	1	0.8	1	6.3	1	2.3
REPORTED SMOKING	12	20.0	24	12.8	9	23.1	17	13.0	3	18.8	7	15.6
UNWED	26	42.6	64	33.5	12	30.8	30	22.6	13	76.5	31	67.4
EDUCATION												
<12 YEARS	1	1.7	13	6.9	0	0.0	4	3.1	1	6.3	9	20.0
12 YEARS	34	56.7	87	46.3	22	56.4	58	44.3	9	56.3	23	51.1
12+ YEARS	25	41.7	88	46.8	17	43.6	69	52.7	6	37.5	13	28.9
PRENATAL CARE												
TRIMESTER CARE BEGAN												
1ST TRIMESTER	45	76.3	146	78.9	30	76.9	103	78.6	11	68.8	33	75.0
3RD TRIMESTER	3	5.1	11	5.9	1	2.6	7	5.3	2	12.5	4	9.1
NO PRENATAL CARE	0	0.0	0	0.0	0	0.0	0	0.0	0	0.0	0	0.0
APNCU INDEX												
ADEQUATE+	5	8.6	29	16.5	4	10.5	20	16.0	1	6.3	7	17.1
ADEQUATE	30	51.7	79	44.9	18	47.4	53	42.4	8	50.0	19	46.3
INTERMEDIATE	14	24.1	39	22.2	11	28.9	31	24.8	3	18.8	7	17.1
INADEQUATE	9	15.5	29	16.5	5	13.2	21	16.8	4	25.0	8	19.5
C-SECTION BIRTHS	14	23.7	43	22.8	7	18.4	31	23.5	4	25.0	9	20.0
PRE-TERM BIRTHS	6	9.8	17	8.9	2	5.1	9	6.8	3	17.6	5	10.9
LOW BIRTHWEIGHT	4	6.6	8	4.2	1	2.6	3	2.3	2	11.8	3	6.5

Note: Unknown responses are excluded from the denominator when calculating percentages.

¹ Crude birth rate per 1,000 population. Population estimates by race by census area are inconsistent. Therefore, three-year rates by race are not reported.

² Teen birth rate per 1,000 female population ages 15-17, 18-19, and 15-19, respectively.

³ Fertility rate per 1,000 female population ages 15-44. Population estimates by race by census area are inconsistent. Therefore, three-year rates by race are not reported.

* Rates based on fewer than 10 occurrences are statistically unreliable and should be used with caution.

** Data suppressed for confidentiality concerns if total births to residents, by either race, is less than five observations.

**TABLE 2 SELECTED BIRTH STATISTICS REPORTED BY MOTHER'S RACE:
2005 AND 2003-2005
YAKUTAT BOROUGH**

	TOTAL				WHITE				NATIVE			
	2005 NUMBER	2005 RATE*	2003-2005 NUMBER	2003-2005 RATE*	2005 NUMBER	2005 RATE*	2003-2005 NUMBER	2003-2005 RATE*	2005 NUMBER	2005 RATE*	2003-2005 NUMBER	2003-2005 RATE*
BIRTH RATES												
CRUDE BIRTH RATE ¹	9	14.5 *	22	11.0	2	6.1 *	8		6	23.4 *	11	
TEEN BIRTH RATE ²												
15-17	0	0.0	1	13.3 *	0		0		0		1	
18-19	0	0.0	0	0.0	0		0		0		0	
15-19	0	0.0	1	10.5 *	0	0.0	0		0	0.0	1	
FERTILITY RATE ³	9	69.2 *	22	56.1	2	40.0 *	8		6	83.3 *	11	

	TOTAL				WHITE				NATIVE			
	2005 NUMBER	2005 %	2003-2005 NUMBER	2003-2005 %	2005 NUMBER	2005 %	2003-2005 NUMBER	2003-2005 %	2005 NUMBER	2005 %	2003-2005 NUMBER	2003-2005 %
BIRTHS												
WITHIN AREA	0	0.0	0	0.0	0	0.0	0	0.0	0	0.0	0	0.0
TO RESIDENTS	9	100.0	22	100.0	2	22.2	8	36.4	6	66.7	11	50.0
FACILITY												
HOSPITAL	8	88.9	19	86.4	1	50.0	5	62.5	6	100.0	11	100.0
BIRTHING CENTER	0	0.0	0	0.0	0	0.0	0	0.0	0	0.0	0	0.0
HOME	0	0.0	0	0.0	0	0.0	0	0.0	0	0.0	0	0.0
OTHER	0	0.0	0	0.0	0	0.0	0	0.0	0	0.0	0	0.0
OUTSIDE ALASKA	1	11.1	3	13.6	1	50.0	3	37.5	0	0.0	0	0.0
MOTHER CHARACTERISTICS												
AGE GROUP												
<15	0	0.0	0	0.0	**		0	0.0	**		0	0.0
15-19	0	0.0	1	4.5	**		0	0.0	**		1	9.1
20-24	1	11.1	6	27.3	**		2	25.0	**		4	36.4
25-29	4	44.4	5	22.7	**		2	25.0	**		3	27.3
30-34	1	11.1	6	27.3	**		3	37.5	**		1	9.1
35-39	3	33.3	3	13.6	**		1	12.5	**		1	9.1
40-44	0	0.0	1	4.5	**		0	0.0	**		1	9.1
45+	0	0.0	0	0.0	**		0	0.0	**		0	0.0
REPORTED DRINKING	1	11.1	1	4.8	**		0	0.0	**		1	9.1
REPORTED SMOKING	3	33.3	6	27.3	**		1	12.5	**		4	36.4
UNWED	2	22.2	6	27.3	**		0	0.0	**		5	45.5
EDUCATION												
<12 YEARS	1	11.1	3	13.6	**		0	0.0	**		2	18.2
12 YEARS	3	33.3	6	27.3	**		2	25.0	**		3	27.3
12+ YEARS	5	55.6	13	59.1	**		6	75.0	**		6	54.5
PRENATAL CARE												
TRIMESTER CARE BEGAN												
1ST TRIMESTER	4	50.0	10	50.0	**		4	57.1	**		5	50.0
3RD TRIMESTER	0	0.0	2	10.0	**		1	14.3	**		1	10.0
NO PRENATAL CARE	1	11.1	1	5.0	**		0	0.0	**		1	9.1
APNCU INDEX												
ADEQUATE+	1	11.1	2	10.0	**		1	14.3	**		1	9.1
ADEQUATE	2	22.2	4	20.0	**		1	14.3	**		3	27.3
INTERMEDIATE	0	0.0	2	10.0	**		1	14.3	**		1	9.1
INADEQUATE	6	66.7	12	60.0	**		4	57.1	**		6	54.5
C-SECTION BIRTHS	3	33.3	5	22.7	**		0	0.0	**		4	36.4
PRE-TERM BIRTHS	1	11.1	2	9.1	**		0	0.0	**		2	18.2
LOW BIRTHWEIGHT	0	0.0	0	0.0	**		0	0.0	**		0	0.0

Note: Unknown responses are excluded from the denominator when calculating percentages.

¹ Crude birth rate per 1,000 population. Population estimates by race by census area are inconsistent. Therefore, three-year rates by race are not reported.

² Teen birth rate per 1,000 female population ages 15-17, 18-19, and 15-19, respectively.

³ Fertility rate per 1,000 female population ages 15-44. Population estimates by race by census area are inconsistent. Therefore, three-year rates by race are not reported.

* Rates based on fewer than 10 occurrences are statistically unreliable and should be used with caution.

** Data suppressed for confidentiality concerns if total births to residents, by either race, is less than five observations.

TABLE 2 **SELECTED BIRTH STATISTICS REPORTED BY MOTHER'S RACE:**
2005 AND 2003–2005
YUKON-KOYUKUK CENSUS AREA

	TOTAL				WHITE				NATIVE			
	2005 NUMBER	2005 RATE*	2003–2005 NUMBER	2003–2005 RATE*	2005 NUMBER	2005 RATE*	2003–2005 NUMBER	2003–2005 RATE*	2005 NUMBER	2005 RATE*	2003–2005 NUMBER	2003–2005 RATE*
BIRTH RATES												
CRUDE BIRTH RATE ¹	69	11.4	221	11.8	10	5.5	36		57	14.0	178	
TEEN BIRTH RATE ²												
15–17	4	18.7*	14	21.7	0		1		4		12	
18–19	7	70.7*	26	85.8	0		2		7		24	
15–19	11	35.1	40	42.1	0	0.0	3		11	47.0	36	
FERTILITY RATE ³	69	60.1	221	62.2	10	31.6	36		57	71.0	178	
BIRTHS												
WITHIN AREA	1	100.0	1	100.0	0	0.0	0	0.0	1	100.0	1	100.0
TO RESIDENTS	69	100.0	221	100.0	10	14.5	36	16.3	57	82.6	178	80.5
FACILITY												
HOSPITAL	66	95.7	212	95.9	8	80.0	29	80.6	56	98.2	176	98.9
BIRTHING CENTER	1	1.4	7	3.2	1	10.0	6	16.7	0	0.0	1	0.6
HOME	0	0.0	0	0.0	0	0.0	0	0.0	0	0.0	0	0.0
OTHER	1	1.4	1	0.5	0	0.0	0	0.0	1	1.8	1	0.6
OUTSIDE ALASKA	1	1.4	1	0.5	1	10.0	1	2.8	0	0.0	0	0.0
MOTHER CHARACTERISTICS												
AGE GROUP												
<15	1	1.4	1	0.5	0	0.0	0	0.0	1	1.8	1	0.6
15–19	11	15.9	40	18.1	0	0.0	3	8.3	11	19.3	36	20.2
20–24	20	29.0	64	29.0	1	10.0	2	5.6	18	31.6	59	33.1
25–29	17	24.6	53	24.0	4	40.0	11	30.6	13	22.8	40	22.5
30–34	13	18.8	36	16.3	2	20.0	9	25.0	10	17.5	26	14.6
35–39	4	5.8	18	8.1	2	20.0	6	16.7	2	3.5	12	6.7
40–44	3	4.3	9	4.1	1	10.0	5	13.9	2	3.5	4	2.2
45+	0	0.0	0	0.0	0	0.0	0	0.0	0	0.0	0	0.0
REPORTED DRINKING	3	4.4	9	4.1	0	0.0	0	0.0	3	5.4	8	4.5
REPORTED SMOKING	17	25.0	71	32.3	2	20.0	6	16.7	15	26.8	63	35.6
UNWED	47	68.1	150	67.9	2	20.0	10	27.8	45	78.9	137	77.0
EDUCATION												
<12 YEARS	15	23.8	49	23.9	1	10.0	4	11.1	14	27.5	44	26.7
12 YEARS	36	57.1	111	54.1	4	40.0	11	30.6	31	60.8	98	59.4
12+ YEARS	12	19.0	45	22.0	5	50.0	21	58.3	6	11.8	23	13.9
PRENATAL CARE												
TRIMESTER CARE BEGAN												
1ST TRIMESTER	41	62.1	120	58.3	6	60.0	22	62.9	34	63.0	96	57.5
3RD TRIMESTER	3	4.5	21	10.2	0	0.0	4	11.4	3	5.6	17	10.2
NO PRENATAL CARE	0	0.0	1	0.5	0	0.0	0	0.0	0	0.0	1	0.6
APNCU INDEX												
ADEQUATE+	6	9.4	21	10.3	4	40.0	9	26.5	2	3.8	12	7.2
ADEQUATE	18	28.1	51	25.0	4	40.0	12	35.3	14	26.9	39	23.5
INTERMEDIATE	21	32.8	60	29.4	2	20.0	5	14.7	17	32.7	52	31.3
INADEQUATE	19	29.7	72	35.3	0	0.0	8	23.5	19	36.5	63	38.0
C-SECTION BIRTHS	15	21.7	45	20.4	3	30.0	9	25.0	11	19.3	35	19.7
PRE-TERM BIRTHS	4	5.8	16	7.2	1	10.0	2	5.6	3	5.3	13	7.3
LOW BIRTHWEIGHT	3	4.4	11	5.0	1	10.0	3	8.3	2	3.6	7	4.0

Note: Unknown responses are excluded from the denominator when calculating percentages.

¹ Crude birth rate per 1,000 population. Population estimates by race by census area are inconsistent. Therefore, three-year rates by race are not reported.

² Teen birth rate per 1,000 female population ages 15–17, 18–19, and 15–19, respectively.

³ Fertility rate per 1,000 female population ages 15–44. Population estimates by race by census area are inconsistent. Therefore, three-year rates by race are not reported.

* Rates based on fewer than 10 occurrences are statistically unreliable and should be used with caution.

** Data suppressed for confidentiality concerns if total births to residents, by either race, is less than five observations.

TABLE 3 SELECTED BIRTH STATISTICS REPORTED BY MOTHER'S RACE AND NATIVE REGIONAL CORPORATION OF RESIDENCE: 2005 AND 2003-2005 AHTNA INCORPORATED

	TOTAL				WHITE				NATIVE			
	2005 NUMBER	2005 %	2003-2005 NUMBER	2003-2005 %	2005 NUMBER	2005 %	2003-2005 NUMBER	2003-2005 %	2005 NUMBER	2005 %	2003-2005 NUMBER	2003-2005 %
BIRTHS												
WITHIN AREA	5	100.0	9	100.0	4	80.0	8	88.9	1	20.0	1	11.1
TO RESIDENTS	53	100.0	133	100.0	26	49.1	75	56.4	25	47.2	53	39.8
FACILITY												
HOSPITAL	42	79.2	107	80.5	15	57.7	49	65.3	25	100.0	53	100.0
BIRTHING CENTER	6	11.3	17	12.8	6	23.1	17	22.7	0	0.0	0	0.0
HOME	4	7.5	7	5.3	4	15.4	7	9.3	0	0.0	0	0.0
CLINIC	1	1.9	1	0.8	1	3.8	1	1.3	0	0.0	0	0.0
OUTSIDE ALASKA	0	0.0	1	0.8	0	0.0	1	1.3	0	0.0	0	0.0
MOTHER CHARACTERISTICS												
AGE GROUP												
<15	0	0.0	0	0.0	0	0.0	0	0.0	0	0.0	0	0.0
15-19	5	9.5	14	10.6	1	3.8	4	5.3	4	16.0	10	18.9
15-17	3	5.7	7	5.3	0	0.0	0	0.0	3	12.0	7	13.2
18-19	2	3.8	7	5.3	1	3.8	4	5.3	1	4.0	3	5.7
20-24	14	26.4	31	23.3	6	23.1	14	18.7	8	32.0	17	32.1
25-29	15	28.3	34	25.6	4	15.4	13	17.3	9	36.0	17	32.1
30-34	10	18.9	34	25.6	8	30.8	29	38.7	2	8.0	5	9.4
35-39	7	13.2	17	12.8	6	23.1	13	17.3	1	4.0	3	5.7
40-44	2	3.8	3	2.3	1	3.8	2	2.7	1	4.0	1	1.9
45+	0	0.0	0	0.0	0	0.0	0	0.0	0	0.0	0	0.0
REPORTED DRINKING	1	1.9	4	3.1	0	0.0	2	2.7	0	0.0	1	1.9
REPORTED SMOKING	7	13.2	18	13.5	1	3.8	7	9.3	6	24.0	11	20.8
UNWED	18	34.0	45	33.8	2	7.7	10	13.3	16	64.0	35	66.0
EDUCATION												
<12 YEARS	11	21.2	27	21.1	2	7.7	9	12.3	9	37.5	18	35.3
12 YEARS	25	48.1	53	41.4	11	42.3	23	31.5	13	54.2	28	54.9
12+ YEARS	16	30.8	48	37.5	13	50.0	41	56.2	2	8.3	5	9.8
PRENATAL CARE												
TRIMESTER CARE BEGAN												
1ST TRIMESTER	38	73.1	93	72.7	16	61.5	53	71.6	20	83.3	38	74.5
3RD TRIMESTER	2	3.8	5	3.9	2	7.7	3	4.1	0	0.0	2	3.9
NO PRENATAL CARE	1	2.0	2	1.6	0	0.0	1	1.5	1	4.0	1	1.9
APNCU INDEX												
ADEQUATE+	11	22.0	19	15.4	3	13.0	9	13.2	6	24.0	8	15.4
ADEQUATE	15	30.0	45	36.6	4	17.4	27	39.7	11	44.0	18	34.6
INTERMEDIATE	13	26.0	30	24.4	8	34.8	14	20.6	5	20.0	15	28.8
INADEQUATE	11	22.0	29	23.6	8	34.8	18	26.5	3	12.0	11	21.2
C-SECTION BIRTHS	9	17.0	24	18.0	3	11.5	13	17.3	5	20.0	10	18.9
PRE-TERM BIRTHS	4	7.5	11	8.3	3	11.5	5	6.7	1	4.0	6	11.3
LOW BIRTHWEIGHT	2	3.8	7	5.3	2	7.7	4	5.3	0	0.0	3	5.7

Note: Unknown responses are excluded from the denominator when calculating percentages.

TABLE 3 SELECTED BIRTH STATISTICS REPORTED BY MOTHER'S RACE AND NATIVE REGIONAL CORPORATION OF RESIDENCE: 2005 AND 2003-2005 ALEUT CORPORATION

	TOTAL				WHITE				NATIVE			
	2005 NUMBER	2005 %	2003-2005 NUMBER	2003-2005 %	2005 NUMBER	2005 %	2003-2005 NUMBER	2003-2005 %	2005 NUMBER	2005 %	2003-2005 NUMBER	2003-2005 %
BIRTHS												
WITHIN AREA	0	0.0	1	100.0	0	0.0	0	0.0	0	0.0	0	0.0
TO RESIDENTS	62	100.0	161	100.0	19	30.6	60	37.3	32	51.6	71	44.1
FACILITY												
HOSPITAL	49	79.0	120	74.5	6	31.6	26	43.3	32	100.0	71	100.0
BIRTHING CENTER	0	0.0	2	1.2	0	0.0	2	3.3	0	0.0	0	0.0
HOME	0	0.0	1	0.6	0	0.0	1	1.7	0	0.0	0	0.0
CLINIC	0	0.0	1	0.6	0	0.0	0	0.0	0	0.0	0	0.0
OUTSIDE ALASKA	13	21.0	37	23.0	13	68.4	31	51.7	0	0.0	0	0.0
MOTHER CHARACTERISTICS												
AGE GROUP												
<15	0	0.0	0	0.0	0	0.0	0	0.0	0	0.0	0	0.0
15-19	1	1.6	6	3.7	0	0.0	0	0.0	1	3.1	5	7.0
15-17	0	0.0	1	0.6	0	0.0	0	0.0	0	0.0	0	0.0
18-19	1	1.6	5	3.1	0	0.0	0	0.0	1	3.1	5	7.0
20-24	19	31.1	49	30.8	5	27.8	15	25.4	11	34.4	28	39.4
25-29	17	27.9	38	23.9	4	22.2	11	18.6	11	34.4	19	26.8
30-34	14	23.0	42	26.4	6	33.3	23	39.0	5	15.6	10	14.1
35-39	5	8.2	15	9.4	3	16.7	8	13.6	2	6.3	5	7.0
40-44	5	8.2	9	5.7	0	0.0	2	3.4	2	6.3	4	5.6
45+	0	0.0	0	0.0	0	0.0	0	0.0	0	0.0	0	0.0
REPORTED DRINKING	0	0.0	6	4.6	0	0.0	0	0.0	0	0.0	5	7.0
REPORTED SMOKING	16	26.7	33	21.6	1	5.9	3	5.3	13	40.6	28	39.4
UNWED	30	49.2	72	46.5	6	33.3	17	29.3	19	59.4	43	60.6
EDUCATION												
<12 YEARS	6	9.7	16	10.5	0	0.0	2	3.6	5	15.6	10	14.3
12 YEARS	33	53.2	87	57.2	8	42.1	27	49.1	18	56.3	45	64.3
12+ YEARS	23	37.1	49	32.2	11	57.9	26	47.3	9	28.1	15	21.4
PRENATAL CARE												
TRIMESTER CARE BEGAN												
1ST TRIMESTER	52	88.1	124	83.8	15	88.2	45	84.9	28	87.5	62	87.3
3RD TRIMESTER	2	3.4	7	4.7	0	0.0	3	5.7	2	6.3	3	4.2
NO PRENATAL CARE	0	0.0	1	0.7	0	0.0	0	0.0	0	0.0	0	0.0
APNCU INDEX												
ADEQUATE+	14	25.5	48	34.3	2	13.3	8	17.0	10	31.3	37	52.1
ADEQUATE	23	41.8	52	37.1	7	46.7	22	46.8	12	37.5	21	29.6
INTERMEDIATE	10	18.2	20	14.3	4	26.7	11	23.4	5	15.6	5	7.0
INADEQUATE	8	14.5	20	14.3	2	13.3	6	12.8	5	15.6	8	11.3
C-SECTION BIRTHS	13	21.0	27	16.8	4	21.1	12	20.0	6	18.8	8	11.3
PRE-TERM BIRTHS	6	9.7	14	8.7	3	15.8	4	6.7	1	3.1	5	7.0
LOW BIRTHWEIGHT	3	4.8	9	5.6	1	5.3	1	1.7	1	3.1	5	7.0

Note: Unknown responses are excluded from the denominator when calculating percentages.

TABLE 3
SELECTED BIRTH STATISTICS REPORTED BY MOTHER'S RACE AND NATIVE
REGIONAL CORPORATION OF RESIDENCE: 2005 AND 2003-2005
ARCTIC SLOPE REGIONAL CORPORATION

	TOTAL				WHITE				NATIVE			
	2005 NUMBER	2005 %	2003-2005 NUMBER	2003-2005 %	2005 NUMBER	2005 %	2003-2005 NUMBER	2003-2005 %	2005 NUMBER	2005 %	2003-2005 NUMBER	2003-2005 %
BIRTHS												
WITHIN AREA	62	100.0	159	100.0	2	3.2	4	2.5	52	83.9	144	90.6
TO RESIDENTS	175	100.0	506	100.0	9	5.1	37	7.3	154	88.0	441	87.2
FACILITY												
HOSPITAL	171	97.7	491	97.0	8	88.9	29	78.4	153	99.4	437	99.1
BIRTHING CENTER	0	0.0	2	0.4	0	0.0	1	2.7	0	0.0	1	0.2
HOME	1	0.6	2	0.4	0	0.0	0	0.0	0	0.0	1	0.2
CLINIC	1	0.6	1	0.2	0	0.0	0	0.0	1	0.6	1	0.2
OUTSIDE ALASKA	2	1.1	10	2.0	1	11.1	7	18.9	0	0.0	1	0.2
MOTHER CHARACTERISTICS												
AGE GROUP												
<15	3	1.7	4	0.8	0	0.0	0	0.0	3	1.9	4	0.9
15-19	40	23.0	103	20.5	1	12.5	3	8.8	38	24.6	98	22.2
15-17	20	11.5	41	8.2	0	0.0	1	2.9	19	12.3	39	8.8
18-19	20	11.5	62	12.3	1	12.5	2	5.9	19	12.3	59	13.4
20-24	64	36.8	164	32.6	0	0.0	5	14.7	60	39.0	153	34.7
25-29	32	18.4	123	24.5	1	12.5	9	26.5	30	19.5	107	24.3
30-34	15	8.6	60	11.9	2	25.0	7	20.6	11	7.1	46	10.4
35-39	19	10.9	45	8.9	4	50.0	10	29.4	12	7.8	30	6.8
40-44	1	0.6	4	0.8	0	0.0	0	0.0	0	0.0	3	0.7
45+	0	0.0	0	0.0	0	0.0	0	0.0	0	0.0	0	0.0
REPORTED DRINKING	7	4.0	23	4.6	1	11.1	2	5.7	6	3.9	21	4.8
REPORTED SMOKING	81	46.3	224	44.6	1	11.1	3	8.6	79	51.3	220	50.1
UNWED	123	70.3	336	66.4	1	11.1	6	16.2	116	75.3	321	72.8
EDUCATION												
<12 YEARS	56	32.4	136	27.3	1	12.5	2	6.1	54	35.3	133	30.4
12 YEARS	83	48.0	268	53.8	1	12.5	9	27.3	78	51.0	249	57.0
12+ YEARS	34	19.7	94	18.9	6	75.0	22	66.7	21	13.7	55	12.6
PRENATAL CARE												
TRIMESTER CARE BEGAN												
1ST TRIMESTER	113	66.1	321	65.9	7	87.5	31	86.1	100	65.8	273	64.1
3RD TRIMESTER	12	7.0	46	9.4	1	12.5	3	8.3	11	7.2	42	9.9
NO PRENATAL CARE	1	0.6	6	1.2	0	0.0	0	0.0	1	0.7	6	1.4
APNCU INDEX												
ADEQUATE+	17	10.1	44	9.1	2	28.6	6	17.6	14	9.2	33	7.7
ADEQUATE	45	26.6	114	23.5	3	42.9	13	38.2	38	25.0	93	21.7
INTERMEDIATE	56	33.1	153	31.5	1	14.3	10	29.4	53	34.9	139	32.5
INADEQUATE	51	30.2	174	35.9	1	14.3	5	14.7	47	30.9	163	38.1
C-SECTION BIRTHS	13	7.4	41	8.1	1	11.1	8	21.6	10	6.5	26	5.9
PRE-TERM BIRTHS	25	14.3	71	14.0	2	22.2	5	13.5	22	14.3	63	14.3
LOW BIRTHWEIGHT	11	6.3	26	5.1	1	11.1	3	8.1	9	5.8	20	4.5

Note: Unknown responses are excluded from the denominator when calculating percentages.

**TABLE 3 SELECTED BIRTH STATISTICS REPORTED BY MOTHER'S RACE AND NATIVE REGIONAL CORPORATION OF RESIDENCE: 2005 AND 2003-2005
BERING STRAITS NATIVE CORPORATION**

	TOTAL				WHITE				NATIVE			
	2005 NUMBER	2005 %	2003-2005 NUMBER	2003-2005 %	2005 NUMBER	2005 %	2003-2005 NUMBER	2003-2005 %	2005 NUMBER	2005 %	2003-2005 NUMBER	2003-2005 %
BIRTHS												
WITHIN AREA	108	100.0	328	100.0	4	3.7	13	4.0	102	94.4	311	94.8
TO RESIDENTS	248	100.0	674	100.0	20	8.1	58	8.6	224	90.3	607	90.1
FACILITY												
HOSPITAL	243	98.0	663	98.4	16	80.0	50	86.2	224	100.0	605	99.7
BIRTHING CENTER	1	0.4	1	0.1	1	5.0	1	1.7	0	0.0	0	0.0
HOME	0	0.0	0	0.0	0	0.0	0	0.0	0	0.0	0	0.0
CLINIC	1	0.4	3	0.4	0	0.0	0	0.0	0	0.0	2	0.3
OUTSIDE ALASKA	3	1.2	7	1.0	3	15.0	7	12.1	0	0.0	0	0.0
MOTHER CHARACTERISTICS												
AGE GROUP												
<15	1	0.4	4	0.6	0	0.0	0	0.0	1	0.4	4	0.7
15-19	39	15.8	121	17.9	0	0.0	3	5.1	39	17.4	118	19.4
15-17	17	6.9	44	6.5	0	0.0	2	3.4	17	7.6	42	6.9
18-19	22	8.9	77	11.4	0	0.0	1	1.7	22	9.8	76	12.5
20-24	73	29.4	196	29.1	2	10.0	8	13.8	69	30.8	186	30.6
25-29	72	29.0	178	26.4	8	40.0	16	27.6	64	28.6	160	26.4
30-34	41	16.5	111	16.5	8	40.0	17	29.3	33	14.7	92	15.2
35-39	18	7.3	51	7.6	1	5.0	13	22.4	15	6.7	35	5.8
40-44	4	1.6	13	1.9	1	5.0	1	1.7	3	1.3	12	2.0
45+	0	0.0	0	0.0	0	0.0	0	0.0	0	0.0	0	0.0
REPORTED DRINKING	12	4.9	51	7.7	1	5.9	1	1.9	11	4.9	50	8.3
REPORTED SMOKING	128	51.8	361	53.7	0	0.0	3	5.3	128	57.1	358	59.0
UNWED	171	69.0	458	68.0	3	15.0	9	15.5	167	74.6	448	73.8
EDUCATION												
<12 YEARS	64	26.3	183	27.6	0	0.0	2	3.7	64	29.0	180	29.9
12 YEARS	138	56.8	383	57.8	2	10.5	11	20.4	134	60.6	370	61.5
12+ YEARS	41	16.9	97	14.6	17	89.5	41	75.9	23	10.4	52	8.6
PRENATAL CARE												
TRIMESTER CARE BEGAN												
1ST TRIMESTER	184	75.4	491	73.7	18	94.7	50	87.7	164	73.9	435	72.4
3RD TRIMESTER	19	7.8	42	6.3	0	0.0	2	3.5	19	8.6	40	6.7
NO PRENATAL CARE	2	0.8	3	0.4	0	0.0	0	0.0	2	0.9	3	0.5
APNCU INDEX												
ADEQUATE+	51	20.8	129	19.3	5	27.8	11	20.0	46	20.5	117	19.4
ADEQUATE	73	29.8	210	31.5	8	44.4	21	38.2	63	28.1	186	30.8
INTERMEDIATE	68	27.8	182	27.3	3	16.7	17	30.9	65	29.0	164	27.2
INADEQUATE	53	21.6	146	21.9	2	11.1	6	10.9	50	22.3	137	22.7
C-SECTION BIRTHS	25	10.1	61	9.1	6	30.0	17	29.3	17	7.6	42	6.9
PRE-TERM BIRTHS	36	14.5	99	14.7	2	10.0	9	15.5	34	15.2	90	14.8
LOW BIRTHWEIGHT	12	4.8	46	6.8	1	5.0	9	15.5	11	4.9	37	6.1

Note: Unknown responses are excluded from the denominator when calculating percentages.

**TABLE 3 SELECTED BIRTH STATISTICS REPORTED BY MOTHER'S RACE AND NATIVE REGIONAL CORPORATION OF RESIDENCE: 2005 AND 2003-2005
BRISTOL BAY NATIVE CORPORATION**

	TOTAL				WHITE				NATIVE			
	2005 NUMBER	2005 %	2003-2005 NUMBER	2003-2005 %	2005 NUMBER	2005 %	2003-2005 NUMBER	2003-2005 %	2005 NUMBER	2005 %	2003-2005 NUMBER	2003-2005 %
BIRTHS												
WITHIN AREA	57	100.0	161	100.0	4	7.0	18	11.2	52	91.2	141	87.6
TO RESIDENTS	128	100.0	376	100.0	16	12.5	59	15.7	109	85.2	310	82.4
FACILITY												
HOSPITAL	127	99.2	365	97.1	15	93.8	50	84.7	109	100.0	309	99.7
BIRTHING CENTER	0	0.0	2	0.5	0	0.0	1	1.7	0	0.0	1	0.3
HOME	0	0.0	3	0.8	0	0.0	2	3.4	0	0.0	0	0.0
CLINIC	0	0.0	0	0.0	0	0.0	0	0.0	0	0.0	0	0.0
OUTSIDE ALASKA	1	0.8	6	1.6	1	6.3	6	10.2	0	0.0	0	0.0
MOTHER CHARACTERISTICS												
AGE GROUP												
<15	0	0.0	0	0.0	0	0.0	0	0.0	0	0.0	0	0.0
15-19	17	13.3	53	14.1	1	6.3	3	5.1	16	14.7	50	16.1
15-17	1	0.8	12	3.2	0	0.0	1	1.7	1	0.9	11	3.5
18-19	16	12.5	41	10.9	1	6.3	2	3.4	15	13.8	39	12.6
20-24	42	32.8	113	30.1	7	43.8	14	23.7	34	31.2	96	31.0
25-29	37	28.9	98	26.1	3	18.8	17	28.8	32	29.4	79	25.5
30-34	14	10.9	51	13.6	2	12.5	14	23.7	12	11.0	36	11.6
35-39	13	10.2	44	11.7	1	6.3	6	10.2	12	11.0	37	11.9
40-44	4	3.1	16	4.3	2	12.5	5	8.5	2	1.8	11	3.5
45+	1	0.8	1	0.3	0	0.0	0	0.0	1	0.9	1	0.3
REPORTED DRINKING	2	1.6	11	3.0	0	0.0	1	1.8	2	1.8	10	3.2
REPORTED SMOKING	50	39.1	132	35.2	3	18.8	8	13.6	47	43.1	124	40.0
UNWED	66	51.6	194	51.7	3	18.8	10	16.9	63	57.8	184	59.4
EDUCATION												
<12 YEARS	27	21.3	72	19.5	1	6.3	3	5.4	26	24.1	69	22.4
12 YEARS	72	56.7	196	53.0	7	43.8	15	26.8	63	58.3	179	58.1
12+ YEARS	28	22.0	102	27.6	8	50.0	38	67.9	19	17.6	60	19.5
PRENATAL CARE												
TRIMESTER CARE BEGAN												
1ST TRIMESTER	106	83.5	291	78.0	15	93.8	48	82.8	88	81.5	237	76.7
3RD TRIMESTER	2	1.6	14	3.8	0	0.0	1	1.7	2	1.9	13	4.2
NO PRENATAL CARE	1	0.8	1	0.3	0	0.0	0	0.0	1	0.9	1	0.3
APNCU INDEX												
ADEQUATE+	16	12.6	69	18.5	4	25.0	15	25.9	12	11.1	54	17.5
ADEQUATE	39	30.7	98	26.3	8	50.0	21	36.2	30	27.8	75	24.3
INTERMEDIATE	41	32.3	115	30.8	3	18.8	17	29.3	38	35.2	96	31.1
INADEQUATE	31	24.4	91	24.4	1	6.3	5	8.6	28	25.9	84	27.2
C-SECTION BIRTHS	8	6.3	26	6.9	2	12.5	9	15.3	5	4.6	16	5.2
PRE-TERM BIRTHS	10	7.8	39	10.4	1	6.3	5	8.5	9	8.3	34	11.0
LOW BIRTHWEIGHT	5	3.9	16	4.3	0	0.0	2	3.4	5	4.6	14	4.5

Note: Unknown responses are excluded from the denominator when calculating percentages.

TABLE 3 SELECTED BIRTH STATISTICS REPORTED BY MOTHER'S RACE AND NATIVE REGIONAL CORPORATION OF RESIDENCE: 2005 AND 2003-2005 CALISTA CORPORATION

	TOTAL				WHITE				NATIVE			
	2005 NUMBER	2005 %	2003-2005 NUMBER	2003-2005 %	2005 NUMBER	2005 %	2003-2005 NUMBER	2003-2005 %	2005 NUMBER	2005 %	2003-2005 NUMBER	2003-2005 %
BIRTHS												
WITHIN AREA	446	100.0	1,229	100.0	7	1.6	18	1.5	437	98.0	1,204	98.0
TO RESIDENTS	661	100.0	1,945	100.0	28	4.2	83	4.3	626	94.7	1,844	94.8
FACILITY												
HOSPITAL	644	97.4	1,903	97.8	22	78.6	67	80.7	618	98.7	1,822	98.8
BIRTHING CENTER	1	0.2	2	0.1	1	3.6	2	2.4	0	0.0	0	0.0
HOME	0	0.0	5	0.3	0	0.0	2	2.4	0	0.0	3	0.2
CLINIC	8	1.2	19	1.0	0	0.0	0	0.0	7	1.1	17	0.9
OUTSIDE ALASKA	8	1.2	16	0.8	5	17.9	12	14.5	1	0.2	2	0.1
MOTHER CHARACTERISTICS												
AGE GROUP												
<15	3	0.5	4	0.2	0	0.0	0	0.0	3	0.5	4	0.2
15-19	98	14.8	304	15.6	1	3.6	2	2.4	96	15.4	300	16.2
15-17	28	4.2	94	4.8	1	3.6	1	1.2	26	4.2	91	4.9
18-19	70	10.6	210	10.8	0	0.0	1	1.2	70	11.2	209	11.3
20-24	189	28.6	579	29.8	2	7.1	9	11.1	185	29.6	565	30.6
25-29	180	27.2	464	23.9	12	42.9	28	34.6	168	26.8	434	23.5
30-34	109	16.5	323	16.6	9	32.1	26	32.1	98	15.7	291	15.8
35-39	58	8.8	208	10.7	4	14.3	13	16.0	52	8.3	192	10.4
40-44	20	3.0	51	2.6	0	0.0	3	3.7	20	3.2	48	2.6
45+	4	0.6	10	0.5	0	0.0	0	0.0	4	0.6	10	0.5
REPORTED DRINKING	28	4.3	83	4.3	1	4.3	1	1.3	26	4.2	81	4.4
REPORTED SMOKING	131	20.0	391	20.3	2	7.4	5	6.1	127	20.4	384	21.0
UNWED	374	56.7	1,075	55.3	3	10.7	8	9.6	368	58.8	1,060	57.5
EDUCATION												
<12 YEARS	165	25.8	504	26.7	1	3.6	1	1.2	163	26.9	501	27.9
12 YEARS	390	61.0	1,140	60.3	8	28.6	18	22.0	380	62.8	1,118	62.4
12+ YEARS	84	13.1	247	13.1	19	67.9	63	76.8	62	10.2	174	9.7
PRENATAL CARE												
TRIMESTER CARE BEGAN												
1ST TRIMESTER	348	54.0	1,056	57.1	22	81.5	69	85.2	323	52.6	977	55.7
3RD TRIMESTER	76	11.8	177	9.6	2	7.4	2	2.5	74	12.1	175	10.0
NO PRENATAL CARE	4	0.6	14	0.8	1	3.7	1	1.3	2	0.3	11	0.6
APNCU INDEX												
ADEQUATE+	57	8.9	167	9.1	4	14.8	15	19.2	53	8.7	151	8.7
ADEQUATE	99	15.4	300	16.4	12	44.4	34	43.6	86	14.1	264	15.2
INTERMEDIATE	166	25.8	495	27.0	4	14.8	15	19.2	160	26.2	475	27.3
INADEQUATE	321	49.9	872	47.5	7	25.9	14	17.9	312	51.1	852	48.9
C-SECTION BIRTHS	65	9.8	182	9.4	6	21.4	18	21.7	59	9.4	162	8.8
PRE-TERM BIRTHS	99	15.0	298	15.3	4	14.3	10	12.0	93	14.9	286	15.5
LOW BIRTHWEIGHT	30	4.5	126	6.5	2	7.1	3	3.6	26	4.2	121	6.6

Note: Unknown responses are excluded from the denominator when calculating percentages.

**TABLE 3 SELECTED BIRTH STATISTICS REPORTED BY MOTHER'S RACE AND NATIVE REGIONAL CORPORATION OF RESIDENCE: 2005 AND 2003-2005
CHUGACH ALASKA CORPORATION**

	TOTAL				WHITE				NATIVE			
	2005 NUMBER	2005 %	2003-2005 NUMBER	2003-2005 %	2005 NUMBER	2005 %	2003-2005 NUMBER	2003-2005 %	2005 NUMBER	2005 %	2003-2005 NUMBER	2003-2005 %
BIRTHS												
WITHIN AREA	42	100.0	114	100.0	30	71.4	89	78.1	8	19.0	12	10.5
TO RESIDENTS	125	100.0	402	100.0	94	75.2	297	73.9	23	18.4	78	19.4
FACILITY												
HOSPITAL	115	92.0	370	92.0	85	90.4	268	90.2	23	100.0	78	100.0
BIRTHING CENTER	5	4.0	14	3.5	4	4.3	12	4.0	0	0.0	0	0.0
HOME	3	2.4	13	3.2	3	3.2	12	4.0	0	0.0	0	0.0
CLINIC	0	0.0	0	0.0	0	0.0	0	0.0	0	0.0	0	0.0
OUTSIDE ALASKA	2	1.6	5	1.2	2	2.1	5	1.7	0	0.0	0	0.0
MOTHER CHARACTERISTICS												
AGE GROUP												
<15	0	0.0	0	0.0	0	0.0	0	0.0	0	0.0	0	0.0
15-19	5	4.0	29	7.2	5	5.4	21	7.1	0	0.0	7	9.0
15-17	1	0.8	2	0.5	1	1.1	2	0.7	0	0.0	0	0.0
18-19	4	3.2	27	6.7	4	4.3	19	6.4	0	0.0	7	9.0
20-24	35	28.0	102	25.4	25	26.6	66	22.2	9	39.1	30	38.5
25-29	30	24.0	93	23.1	23	24.5	72	24.2	5	21.7	13	16.7
30-34	33	26.4	101	25.1	23	24.5	72	24.2	5	21.7	21	26.9
35-39	17	13.6	60	14.9	15	16.0	53	17.8	2	8.7	5	6.4
40-44	4	3.2	16	4.0	3	3.2	13	4.4	1	4.3	1	1.3
45+	1	0.8	1	0.2	0	0.0	0	0.0	1	4.3	1	1.3
REPORTED DRINKING	5	4.1	12	3.0	4	4.3	7	2.4	1	4.3	5	6.4
REPORTED SMOKING	16	12.9	56	14.1	8	8.6	25	8.6	8	34.8	30	38.5
UNWED	33	26.4	107	26.7	22	23.4	65	22.0	11	47.8	39	50.0
EDUCATION												
<12 YEARS	10	8.1	34	8.7	8	8.6	20	6.9	2	9.1	13	16.9
12 YEARS	46	37.4	143	36.8	30	32.3	92	31.9	14	63.6	44	57.1
12+ YEARS	67	54.5	212	54.5	55	59.1	176	61.1	6	27.3	20	26.0
PRENATAL CARE												
TRIMESTER CARE BEGAN												
1ST TRIMESTER	101	82.1	322	84.1	78	84.8	248	87.0	17	73.9	56	74.7
3RD TRIMESTER	3	2.4	11	2.9	1	1.1	9	3.2	1	4.3	1	1.3
NO PRENATAL CARE	0	0.0	1	0.3	0	0.0	0	0.0	0	0.0	1	1.3
APNCU INDEX												
ADEQUATE+	22	19.1	77	21.5	19	22.1	61	23.1	1	4.5	12	16.0
ADEQUATE	49	42.6	137	38.3	35	40.7	105	39.8	11	50.0	28	37.3
INTERMEDIATE	29	25.2	83	23.2	21	24.4	59	22.3	7	31.8	18	24.0
INADEQUATE	15	13.0	61	17.0	11	12.8	39	14.8	3	13.6	17	22.7
C-SECTION BIRTHS	33	26.4	90	22.4	23	24.5	69	23.2	7	30.4	15	19.2
PRE-TERM BIRTHS	4	3.2	26	6.5	2	2.1	20	6.7	1	4.3	4	5.1
LOW BIRTHWEIGHT	1	0.8	17	4.2	1	1.1	12	4.0	0	0.0	3	3.8

Note: Unknown responses are excluded from the denominator when calculating percentages.

**TABLE 3 SELECTED BIRTH STATISTICS REPORTED BY MOTHER'S RACE AND NATIVE REGIONAL CORPORATION OF RESIDENCE: 2005 AND 2003-2005
COOK INLET REGION INCORPORATED**

	TOTAL				WHITE				NATIVE			
	2005 NUMBER	2005 %	2003-2005 NUMBER	2003-2005 %	2005 NUMBER	2005 %	2003-2005 NUMBER	2003-2005 %	2005 NUMBER	2005 %	2003-2005 NUMBER	2003-2005 %
BIRTHS												
WITHIN AREA	6,828	100.0	20,225	100.0	4,358	63.8	13,131	64.9	1,474	21.6	4,275	21.1
TO RESIDENTS	5,950	100.0	17,641	100.0	4,200	70.6	12,596	71.4	794	13.3	2,343	13.3
FACILITY												
HOSPITAL	5,576	93.7	16,634	94.3	3,862	92.0	11,673	92.7	777	97.9	2,309	98.5
BIRTHING CENTER	217	3.6	569	3.2	201	4.8	539	4.3	10	1.3	15	0.6
HOME	115	1.9	343	1.9	102	2.4	306	2.4	4	0.5	12	0.5
CLINIC	17	0.3	21	0.1	14	0.3	18	0.1	2	0.3	2	0.1
OUTSIDE ALASKA	25	0.4	74	0.4	21	0.5	60	0.5	1	0.1	5	0.2
MOTHER CHARACTERISTICS												
AGE GROUP												
<15	4	0.1	17	0.1	3	0.1	8	0.1	1	0.1	5	0.2
15-19	553	9.3	1,664	9.4	321	7.6	992	7.8	113	14.3	357	15.2
15-17	160	2.7	481	2.7	84	2.0	256	2.0	37	4.7	111	4.7
18-19	393	6.6	1,183	6.7	237	5.6	736	5.8	76	9.6	246	10.5
20-24	1,711	28.8	5,010	28.4	1,155	27.5	3,381	26.8	287	36.1	828	35.3
25-29	1,643	27.6	4,770	27.0	1,199	28.6	3,503	27.8	200	25.2	592	25.3
30-34	1,229	20.7	3,747	21.2	936	22.3	2,890	22.9	106	13.4	338	14.4
35-39	620	10.4	1,881	10.7	456	10.9	1,415	11.2	62	7.8	168	7.2
40-44	180	3.0	506	2.9	122	2.9	371	2.9	24	3.0	52	2.2
45+	9	0.2	43	0.2	7	0.2	35	0.3	1	0.1	3	0.1
REPORTED DRINKING	114	1.9	311	1.8	83	2.0	217	1.7	23	2.9	75	3.2
REPORTED SMOKING	774	13.1	2,398	13.7	461	11.0	1,467	11.7	215	27.2	678	29.1
UNWED	1,982	33.4	5,695	32.3	1,075	25.6	3,181	25.3	480	60.5	1,405	60.0
EDUCATION												
<12 YEARS	814	13.9	2,303	13.7	445	10.7	1,275	10.6	222	28.2	655	28.3
12 YEARS	2,232	38.1	6,482	38.5	1,479	35.7	4,325	35.9	356	45.3	1,044	45.2
12+ YEARS	2,810	48.0	8,069	47.9	2,224	53.6	6,461	53.6	208	26.5	613	26.5
PRENATAL CARE												
TRIMESTER CARE BEGAN												
1ST TRIMESTER	4,840	83.4	14,068	83.7	3,550	86.1	10,397	86.0	635	81.3	1,850	80.5
3RD TRIMESTER	250	4.3	669	4.0	150	3.6	440	3.6	26	3.3	73	3.2
NO PRENATAL CARE	20	0.4	69	0.5	4	0.1	30	0.3	10	1.3	19	0.8
APNCU INDEX												
ADEQUATE+	1,506	27.8	4,302	28.3	1,155	30.0	3,397	31.2	140	18.1	324	14.4
ADEQUATE	2,258	41.7	6,463	42.5	1,656	43.0	4,762	43.8	303	39.2	914	40.5
INTERMEDIATE	972	18.0	2,513	16.5	653	16.9	1,590	14.6	198	25.6	613	27.2
INADEQUATE	674	12.5	1,918	12.6	391	10.1	1,124	10.3	132	17.1	406	18.0
C-SECTION BIRTHS	1,403	23.6	4,063	23.0	1,052	25.0	3,069	24.4	84	10.6	295	12.6
PRE-TERM BIRTHS	651	10.9	1,881	10.7	430	10.2	1,301	10.3	78	9.8	221	9.4
LOW BIRTHWEIGHT	391	6.6	1,098	6.2	248	5.9	736	5.8	49	6.2	138	5.9

Note: Unknown responses are excluded from the denominator when calculating percentages.

TABLE 3 SELECTED BIRTH STATISTICS REPORTED BY MOTHER'S RACE AND NATIVE REGIONAL CORPORATION OF RESIDENCE: 2005 AND 2003-2005 DOYON LIMITED

	TOTAL				WHITE				NATIVE			
	2005 NUMBER	2005 %	2003-2005 NUMBER	2003-2005 %	2005 NUMBER	2005 %	2003-2005 NUMBER	2003-2005 %	2005 NUMBER	2005 %	2003-2005 NUMBER	2003-2005 %
BIRTHS												
WITHIN AREA	1,714	100.0	5,165	100.0	1,288	75.1	3,845	74.4	249	14.5	719	13.9
TO RESIDENTS	1,744	100.0	5,256	100.0	1,308	75.0	3,910	74.4	249	14.3	723	13.8
FACILITY												
HOSPITAL	1,630	93.5	4,977	94.7	1,207	92.3	3,667	93.8	242	97.2	707	97.8
BIRTHING CENTER	68	3.9	157	3.0	62	4.7	139	3.6	4	1.6	12	1.7
HOME	24	1.4	69	1.3	23	1.8	63	1.6	1	0.4	2	0.3
CLINIC	2	0.1	4	0.1	1	0.1	3	0.1	1	0.4	1	0.1
OUTSIDE ALASKA	20	1.1	49	0.9	15	1.1	38	1.0	1	0.4	1	0.1
MOTHER CHARACTERISTICS												
AGE GROUP												
<15	1	0.1	4	0.1	0	0.0	2	0.1	1	0.4	2	0.3
15-19	139	7.9	467	8.9	97	7.4	307	7.9	32	12.8	115	15.9
15-17	25	1.4	99	1.9	15	1.1	57	1.5	6	2.4	24	3.3
18-19	114	6.5	368	7.0	82	6.3	250	6.4	26	10.4	91	12.6
20-24	555	31.8	1,723	32.8	397	30.4	1,248	31.9	94	37.8	267	36.9
25-29	530	30.4	1,501	28.6	403	30.8	1,129	28.9	69	27.7	181	25.0
30-34	330	18.9	969	18.4	259	19.8	764	19.6	37	14.9	96	13.3
35-39	139	8.0	449	8.5	116	8.9	349	8.9	10	4.0	47	6.5
40-44	46	2.6	133	2.5	33	2.5	102	2.6	6	2.4	15	2.1
45+	3	0.2	7	0.1	2	0.2	6	0.2	0	0.0	0	0.0
REPORTED DRINKING	17	1.0	50	1.0	6	0.5	17	0.4	11	4.4	29	4.0
REPORTED SMOKING	211	12.1	676	12.9	139	10.7	451	11.6	66	26.6	194	26.9
UNWED	426	24.4	1,315	25.0	216	16.5	700	17.9	170	68.3	480	66.4
EDUCATION												
<12 YEARS	166	9.9	463	9.2	111	8.7	303	7.9	51	22.2	129	19.0
12 YEARS	741	44.0	2,154	42.7	535	42.0	1,554	40.7	126	54.8	368	54.1
12+ YEARS	778	46.2	2,433	48.2	628	49.3	1,957	51.3	53	23.0	183	26.9
PRENATAL CARE												
TRIMESTER CARE BEGAN												
1ST TRIMESTER	1,346	79.8	4,036	79.1	1,026	80.9	3,084	81.0	169	71.3	463	67.3
3RD TRIMESTER	66	3.9	263	5.2	45	3.5	188	4.9	13	5.5	47	6.8
NO PRENATAL CARE	7	0.4	14	0.3	7	0.6	12	0.3	0	0.0	1	0.1
APNCU INDEX												
ADEQUATE+	313	18.7	942	18.6	248	19.7	740	19.5	39	16.7	101	14.7
ADEQUATE	721	43.1	2,210	43.5	547	43.5	1,667	44.0	86	36.9	256	37.4
INTERMEDIATE	371	22.2	1,078	21.2	289	23.0	809	21.4	44	18.9	139	20.3
INADEQUATE	267	16.0	845	16.7	174	13.8	572	15.1	64	27.5	189	27.6
C-SECTION BIRTHS	400	22.9	1,159	22.1	309	23.6	886	22.7	40	16.1	122	16.9
PRE-TERM BIRTHS	172	9.9	496	9.4	129	9.9	346	8.8	28	11.2	74	10.2
LOW BIRTHWEIGHT	107	6.1	280	5.3	80	6.1	202	5.2	9	3.6	30	4.1

Note: Unknown responses are excluded from the denominator when calculating percentages.

TABLE 3 SELECTED BIRTH STATISTICS REPORTED BY MOTHER'S RACE AND NATIVE REGIONAL CORPORATION OF RESIDENCE: 2005 AND 2003-2005 KONIAG INCORPORATED

	TOTAL				WHITE				NATIVE			
	2005 NUMBER	2005 %	2003-2005 NUMBER	2003-2005 %	2005 NUMBER	2005 %	2003-2005 NUMBER	2003-2005 %	2005 NUMBER	2005 %	2003-2005 NUMBER	2003-2005 %
BIRTHS												
WITHIN AREA	204	100.0	580	100.0	132	64.7	361	62.2	27	13.2	79	13.6
TO RESIDENTS	220	100.0	636	100.0	138	62.7	382	60.1	34	15.5	99	15.6
FACILITY												
HOSPITAL	215	97.7	625	98.3	133	96.4	372	97.4	34	100.0	98	99.0
BIRTHING CENTER	0	0.0	0	0.0	0	0.0	0	0.0	0	0.0	0	0.0
HOME	2	0.9	7	1.1	2	1.4	6	1.6	0	0.0	1	1.0
CLINIC	0	0.0	0	0.0	0	0.0	0	0.0	0	0.0	0	0.0
OUTSIDE ALASKA	3	1.4	4	0.6	3	2.2	4	1.0	0	0.0	0	0.0
MOTHER CHARACTERISTICS												
AGE GROUP												
<15	0	0.0	0	0.0	0	0.0	0	0.0	0	0.0	0	0.0
15-19	15	6.8	53	8.3	6	4.3	28	7.3	6	17.7	16	16.2
15-17	6	2.7	16	2.5	1	0.7	5	1.3	4	11.8	8	8.1
18-19	9	4.1	37	5.8	5	3.6	23	6.0	2	5.9	8	8.1
20-24	58	26.4	168	26.5	28	20.3	89	23.4	15	44.1	30	30.3
25-29	64	29.1	183	28.8	48	34.8	123	32.3	4	11.8	21	21.2
30-34	43	19.5	136	21.4	32	23.2	85	22.3	5	14.7	22	22.2
35-39	28	12.7	69	10.9	17	12.3	41	10.8	4	11.8	10	10.1
40-44	12	5.5	26	4.1	7	5.1	15	3.9	0	0.0	0	0.0
45+	0	0.0	0	0.0	0	0.0	0	0.0	0	0.0	0	0.0
REPORTED DRINKING	2	0.9	2	0.3	1	0.7	1	0.3	1	2.9	1	1.0
REPORTED SMOKING	21	9.5	65	10.3	9	6.5	32	8.4	10	29.4	28	28.3
UNWED	57	25.9	178	28.0	23	16.7	64	16.8	19	55.9	56	56.6
EDUCATION												
<12 YEARS	27	12.6	78	12.5	13	9.8	37	9.9	8	24.2	20	20.8
12 YEARS	85	39.7	233	37.4	45	33.8	119	31.7	19	57.6	49	51.0
12+ YEARS	102	47.7	312	50.1	75	56.4	219	58.4	6	18.2	27	28.1
PRENATAL CARE												
TRIMESTER CARE BEGAN												
1ST TRIMESTER	192	87.3	538	85.5	129	93.5	342	89.8	28	82.4	88	88.9
3RD TRIMESTER	6	2.7	14	2.2	4	2.9	9	2.4	1	2.9	2	2.0
NO PRENATAL CARE	0	0.0	1	0.2	0	0.0	1	0.3	0	0.0	0	0.0
APNCU INDEX												
ADEQUATE+	41	19.0	113	18.7	27	20.0	77	20.8	7	21.2	17	18.1
ADEQUATE	95	44.0	259	42.8	63	46.7	175	47.3	9	27.3	31	33.0
INTERMEDIATE	60	27.8	163	26.9	37	27.4	89	24.1	13	39.4	35	37.2
INADEQUATE	20	9.3	70	11.6	8	5.9	29	7.8	4	12.1	11	11.7
C-SECTION BIRTHS	52	23.6	142	22.3	32	23.2	83	21.7	9	26.5	27	27.3
PRE-TERM BIRTHS	17	7.7	64	10.1	6	4.3	29	7.6	4	11.8	13	13.1
LOW BIRTHWEIGHT	7	3.2	44	6.9	2	1.4	16	4.2	1	2.9	9	9.1

Note: Unknown responses are excluded from the denominator when calculating percentages.

TABLE 3 SELECTED BIRTH STATISTICS REPORTED BY MOTHER'S RACE AND NATIVE REGIONAL CORPORATION OF RESIDENCE: 2005 AND 2003-2005
NANA REGIONAL CORPORATION

	TOTAL				WHITE				NATIVE			
	2005 NUMBER	2005 %	2003-2005 NUMBER	2003-2005 %	2005 NUMBER	2005 %	2003-2005 NUMBER	2003-2005 %	2005 NUMBER	2005 %	2003-2005 NUMBER	2003-2005 %
BIRTHS												
WITHIN AREA	70	100.0	228	100.0	2	2.9	7	3.1	67	95.7	219	96.1
TO RESIDENTS	199	100.0	531	100.0	13	6.5	30	5.6	184	92.5	496	93.4
FACILITY												
HOSPITAL	195	98.0	524	98.7	9	69.2	23	76.7	184	100.0	496	100.0
BIRTHING CENTER	0	0.0	0	0.0	0	0.0	0	0.0	0	0.0	0	0.0
HOME	0	0.0	0	0.0	0	0.0	0	0.0	0	0.0	0	0.0
CLINIC	0	0.0	0	0.0	0	0.0	0	0.0	0	0.0	0	0.0
OUTSIDE ALASKA	4	2.0	7	1.3	4	30.8	7	23.3	0	0.0	0	0.0
MOTHER CHARACTERISTICS												
AGE GROUP												
<15	1	0.5	4	0.8	0	0.0	0	0.0	1	0.5	4	0.8
15-19	38	19.1	102	19.2	0	0.0	0	0.0	38	20.7	102	20.6
15-17	11	5.5	36	6.8	0	0.0	0	0.0	11	6.0	36	7.3
18-19	27	13.6	66	12.4	0	0.0	0	0.0	27	14.7	66	13.3
20-24	68	34.2	169	31.8	0	0.0	3	10.0	66	35.9	164	33.1
25-29	36	18.1	112	21.1	5	38.5	11	36.7	31	16.8	100	20.2
30-34	32	16.1	87	16.4	5	38.5	9	30.0	27	14.7	76	15.3
35-39	20	10.1	45	8.5	3	23.1	6	20.0	17	9.2	39	7.9
40-44	3	1.5	11	2.1	0	0.0	1	3.3	3	1.6	10	2.0
45+	1	0.5	1	0.2	0	0.0	0	0.0	1	0.5	1	0.2
REPORTED DRINKING	13	6.7	23	4.4	0	0.0	1	3.7	13	7.1	22	4.5
REPORTED SMOKING	96	48.5	235	44.6	2	15.4	5	16.7	92	50.3	228	46.3
UNWED	126	63.3	366	68.9	1	7.7	5	16.7	123	66.8	358	72.2
EDUCATION												
<12 YEARS	72	37.1	194	37.7	0	0.0	1	3.6	72	40.0	193	40.0
12 YEARS	100	51.5	260	50.6	3	25.0	6	21.4	95	52.8	252	52.3
12+ YEARS	22	11.3	60	11.7	9	75.0	21	75.0	13	7.2	37	7.7
PRENATAL CARE												
TRIMESTER CARE BEGAN												
1ST TRIMESTER	141	71.6	368	70.6	10	83.3	24	82.8	129	70.5	340	69.7
3RD TRIMESTER	10	5.1	24	4.6	1	8.3	2	6.9	9	4.9	22	4.5
NO PRENATAL CARE	0	0.0	4	0.8	0	0.0	0	0.0	0	0.0	4	0.8
APNCU INDEX												
ADEQUATE+	36	18.4	93	17.8	2	16.7	7	25.0	33	18.1	85	17.3
ADEQUATE	50	25.5	134	25.7	3	25.0	8	28.6	47	25.8	124	25.3
INTERMEDIATE	60	30.6	148	28.4	5	41.7	8	28.6	54	29.7	139	28.4
INADEQUATE	50	25.5	147	28.2	2	16.7	5	17.9	48	26.4	142	29.0
C-SECTION BIRTHS	19	9.5	48	9.0	4	30.8	6	20.0	14	7.6	40	8.1
PRE-TERM BIRTHS	24	12.1	56	10.5	3	23.1	4	13.3	20	10.9	51	10.3
LOW BIRTHWEIGHT	16	8.0	33	6.2	2	15.4	4	13.3	13	7.1	28	5.6

Note: Unknown responses are excluded from the denominator when calculating percentages.

TABLE 3 SELECTED BIRTH STATISTICS REPORTED BY MOTHER'S RACE AND NATIVE REGIONAL CORPORATION OF RESIDENCE: 2005 AND 2003-2005 SEALASKA CORPORATION

	TOTAL				WHITE				NATIVE			
	2005 NUMBER	2005 %	2003-2005 NUMBER	2003-2005 %	2005 NUMBER	2005 %	2003-2005 NUMBER	2003-2005 %	2005 NUMBER	2005 %	2003-2005 NUMBER	2003-2005 %
BIRTHS												
WITHIN AREA	836	100.0	2,440	100.0	531	63.5	1,610	66.0	233	27.9	633	25.9
TO RESIDENTS	877	100.0	2,593	100.0	550	62.7	1,689	65.1	251	28.6	678	26.1
FACILITY												
HOSPITAL	764	87.1	2,231	86.0	460	83.6	1,408	83.4	237	94.4	638	94.1
BIRTHING CENTER	44	5.0	148	5.7	41	7.5	127	7.5	1	0.4	12	1.8
HOME	46	5.2	125	4.8	32	5.8	94	5.6	10	4.0	20	2.9
CLINIC	0	0.0	6	0.2	0	0.0	3	0.2	0	0.0	3	0.4
OUTSIDE ALASKA	23	2.6	83	3.2	17	3.1	57	3.4	3	1.2	5	0.7
MOTHER CHARACTERISTICS												
AGE GROUP												
<15	0	0.0	0	0.0	0	0.0	0	0.0	0	0.0	0	0.0
15-19	87	9.9	247	9.5	38	6.9	117	6.9	45	17.9	115	17.0
15-17	17	1.9	62	2.4	4	0.7	20	1.2	12	4.8	38	5.6
18-19	70	8.0	185	7.1	34	6.2	97	5.7	33	13.1	77	11.4
20-24	222	25.3	678	26.2	128	23.3	384	22.7	80	31.9	250	36.9
25-29	249	28.4	694	26.8	153	27.8	455	26.9	72	28.7	171	25.2
30-34	189	21.6	583	22.5	131	23.8	434	25.7	42	16.7	99	14.6
35-39	104	11.9	312	12.0	77	14.0	237	14.0	12	4.8	36	5.3
40-44	25	2.9	74	2.9	22	4.0	58	3.4	0	0.0	7	1.0
45+	1	0.1	4	0.2	1	0.2	4	0.2	0	0.0	0	0.0
REPORTED DRINKING	17	2.0	45	1.8	12	2.3	29	1.8	5	2.0	15	2.3
REPORTED SMOKING	144	16.6	416	16.2	85	15.6	250	14.9	52	20.9	146	21.7
UNWED	357	40.7	973	37.7	166	30.2	461	27.3	168	66.9	446	65.8
EDUCATION												
<12 YEARS	91	10.7	281	11.2	34	6.4	111	6.7	55	22.9	153	23.3
12 YEARS	375	44.2	996	39.7	220	41.2	583	35.4	118	49.2	326	49.7
12+ YEARS	382	45.0	1,229	49.0	280	52.4	952	57.8	67	27.9	177	27.0
PRENATAL CARE												
TRIMESTER CARE BEGAN												
1ST TRIMESTER	743	86.6	2,108	85.3	479	88.5	1,421	87.3	206	83.7	525	81.3
3RD TRIMESTER	9	1.0	65	2.6	5	0.9	33	2.0	4	1.6	26	4.0
NO PRENATAL CARE	5	0.6	14	0.6	2	0.4	8	0.5	3	1.2	6	1.0
APNCU INDEX												
ADEQUATE+	301	35.3	851	36.8	194	36.2	577	38.0	82	33.3	203	33.4
ADEQUATE	384	45.0	974	42.1	245	45.7	651	42.9	105	42.7	245	40.3
INTERMEDIATE	95	11.1	253	10.9	58	10.8	167	11.0	32	13.0	71	11.7
INADEQUATE	73	8.6	234	10.1	39	7.3	124	8.2	27	11.0	89	14.6
KESSNER INDEX												
ADEQUATE	682	80.0	1,808	78.1	442	82.5	1,228	80.7	184	74.8	439	72.2
INTERMEDIATE	157	18.4	427	18.5	87	16.2	252	16.6	55	22.4	137	22.5
INADEQUATE	14	1.6	79	3.4	7	1.3	41	2.7	7	2.8	32	5.3
C-SECTION BIRTHS	251	28.6	753	29.0	163	29.6	523	31.0	61	24.3	168	24.8
PRE-TERM BIRTHS	76	8.7	256	9.9	38	6.9	149	8.8	32	12.7	80	11.8
LOW BIRTHWEIGHT	45	5.1	138	5.3	27	4.9	87	5.2	12	4.8	34	5.0

Note: Unknown responses are excluded from the denominator when calculating percentages.

